



ULTRAPAN® Nylon Elbow Loop Kit

Installation Instructions

Part Number 48351

Introduction

The 48351 Nylon Elbow loop Kit is used to make (2) 180 degree turn in an ULTRAPAN System. Also available is a 47951 ULTRAPAN Nylon Elbow kit. This kit contains (1) 90 degree elbow with adapters.



Installation

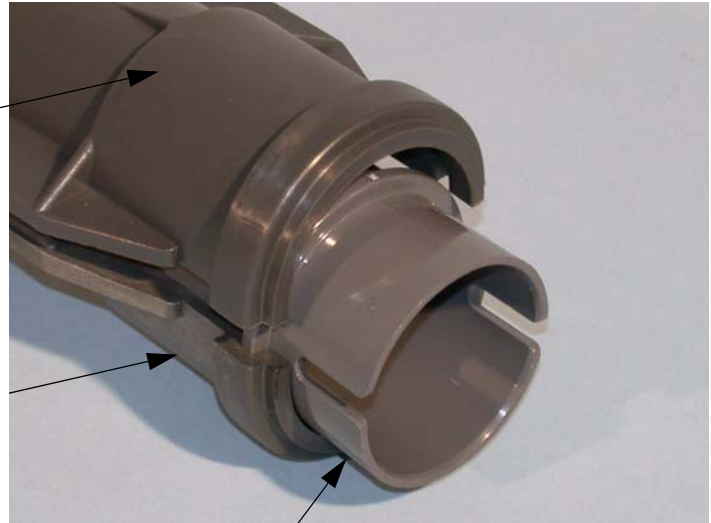
1. Assemble the Adapters into the Elbow Halves

The lances in the adapter should be facing out.

Elbow Half

Elbow Half

Adapter



2. Assemble the Adjustable Clamps to each end as shown.

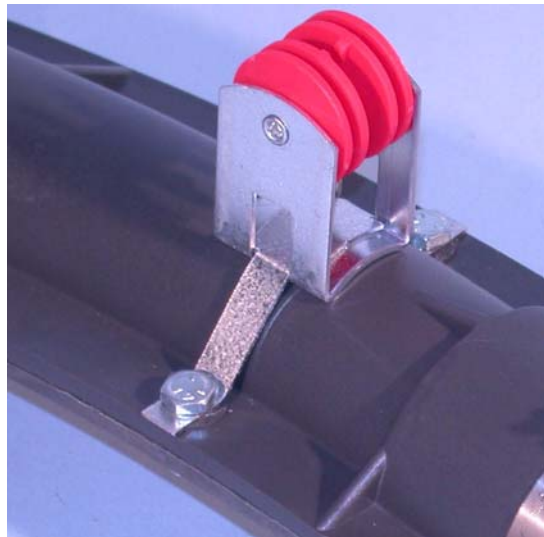
Adjustable
Clamp Band



3. Install the insulator bracket using the elbow strap and two 1/4-20 bolts and nuts.



Insulator bracket with elbow strap.
the strap will have to be shaped
around the elbow.



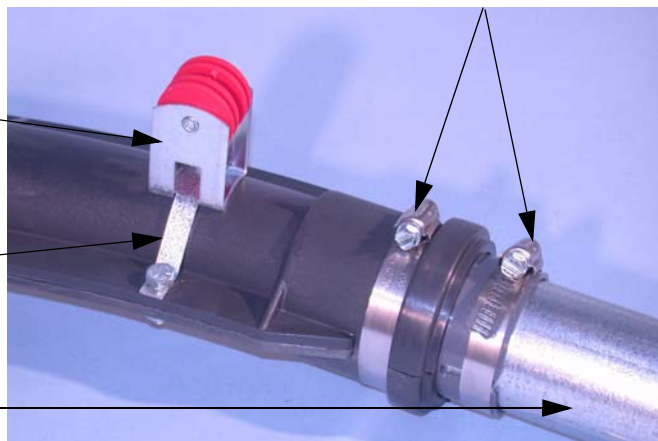
4. Slide the steel connecting tube in the adapter,. Note: Steel tube used to join the two elbows together.
secure the tube using a adjustable clamp. The tube will make the feeder 9 ft. center to center.
see photo at the side.

Insulator Bracket

Elbow strap

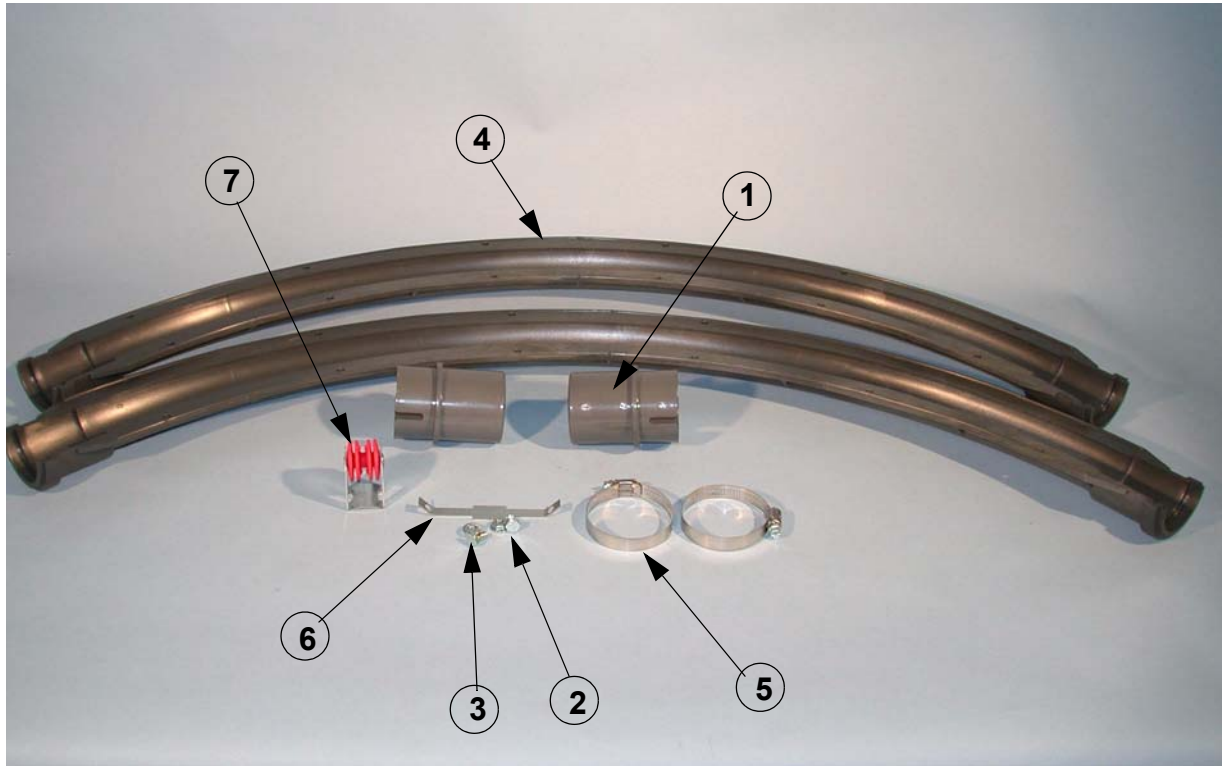
Steel connector tube

Adjustable clamp



Parts Listing

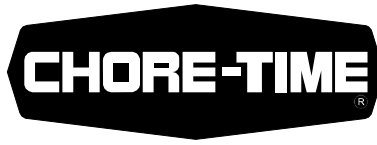
ULTRAPAN Nylon Elbow Kit



Item	Description	Part No.
1	Molded Elbow Adaptor	46979
2	Adjustable Clamp	8643
3	1/4-20 x .75 HX HD Bolt	1133
3	1/4-20 HX FLG Nut	46460
4	90° Molded Elbow Half	46779
5	Adjustable clamp	8643
6	Elbow strap	48357
7	Insulator Bracket	24060
	5 Foot ext. tube	48358
	Tube adapter (Steel)	28107

ULTRAPAN Loop Kit Part No. 48351

ULTRAPAN elbow kit Part No. 47951



**Made to work.
Built to last.**

Contact your nearby Chore-Time distributor or representative for additional parts and information.

**CTB Inc.
P.O. Box 2000 • Milford, Indiana 46542-2000 • U.S.A.
Phone (574) 658-4101 • Fax (877) 730-8825
E-Mail: poultry@chovertime.com • Internet: <http://www.chovertime.com>**

Printed in the U.S.A.