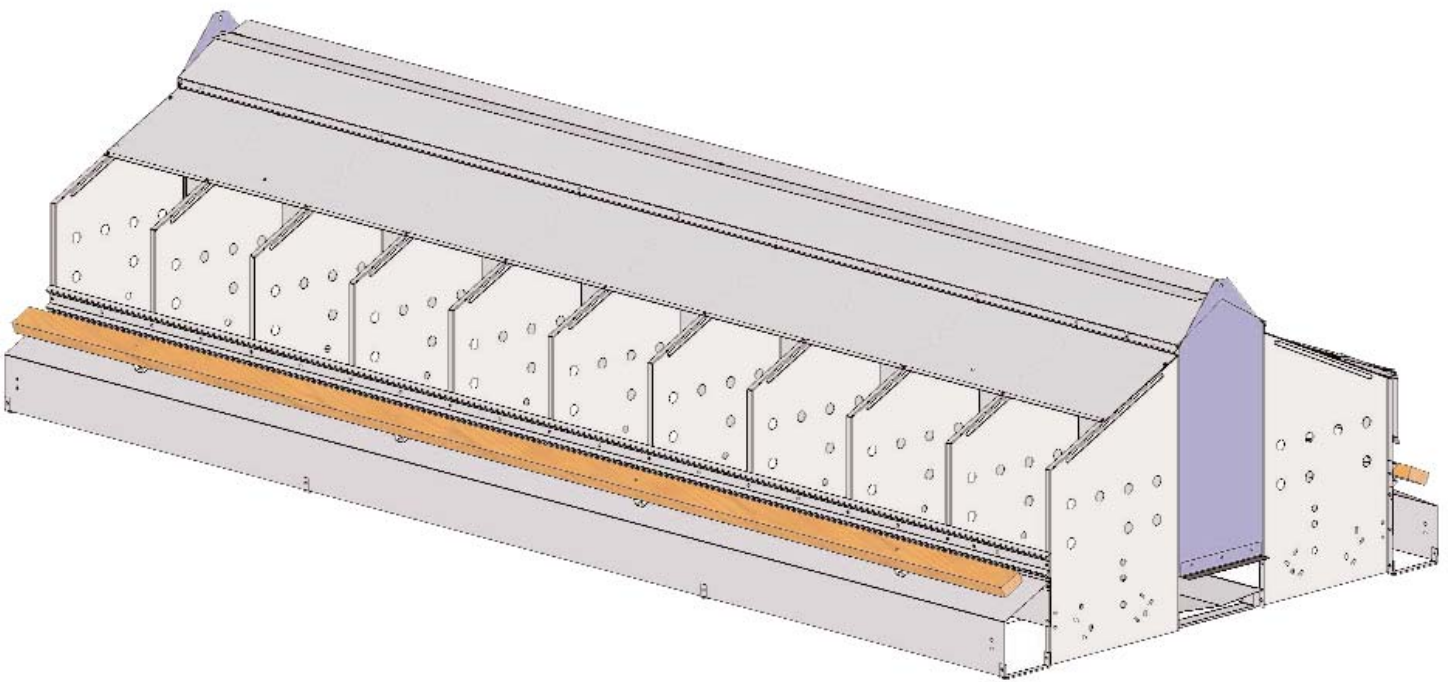




Assembly Instructions



*Made to Work. Built to Last.*SM
P.O. Box 2000 State Road 15 North
Milford, IN. 46542-2000 U.S.A.
574-658-4101 Fax 877-730-8825
www.ctbinc.com

Made in the U.S.A.

Note: The original, authoritative version of this manual is the English version produced by CTB, Inc. or any of its subsidiaries or divisions, (hereafter collectively referred to as "CTB"). Subsequent changes to any manual made by any third party have not been reviewed nor authenticated by CTB. Such changes may include, but are not limited to, translation into languages other than English, and additions to or deletions from the original content. CTB disclaims responsibility for any and all damages, injuries, warranty claims and/or any other claims associated with such changes, inasmuch as such changes result in content that is different from the authoritative CTB-published English version of the manual. For current product installation and operation information, please contact the customer service and/or technical service departments of the appropriate CTB subsidiary or division. Should you observe any questionable content in any manual, please notify CTB immediately in writing to: CTB Legal Department, P.O. Box 2000, Milford, IN 46542-2000 USA.

ASSEMBLY INSTRUCTIONS FOR CENTER BELT NEST

This guide will address the assembly of and parts identification for the revised center belt nest of common partition design. This guide will also include attachment of and parts identification for the passageways.

Installation of the collection table, variable speed control and egg belt as well as system operation will be covered in a separate document.

⚠ WARNING: Improper installation, adjustment, alteration, service or maintenance can cause property damage, injury or death. Read the installation, operating and maintenance instructions thoroughly before installing or servicing this equipment.

L'installation déplacée, l'ajustement, le changement, le service ou l'entretien peuvent causer les dommages de propriété, la blessure ou la mort. Lire l'installation, fonctionnant et les instructions d'entretien à fond avant d'installer ou entretenir cet équipement.

La instalación impropia, ajuste, modificación, servicio o mantenimiento puede causar dañado propiedad, herida o muerte. Lea la instalación, trabajar y mantenimiento instrucciones completamente antes de instalar o poner en funcionamiento equipo.

DANGER

Take necessary precautions when working with sheet metal, edges may be SHARP!



Faites attention quand travaillant avec feuillet, les bords peuvent être AIGUISÉ !

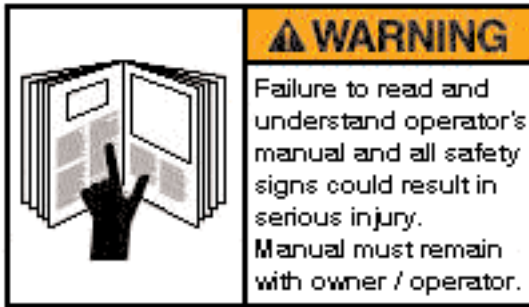
¡Tome las precauciones necesarias al trabajar con metal laminado, las orillas pueden ser AGUDAS!

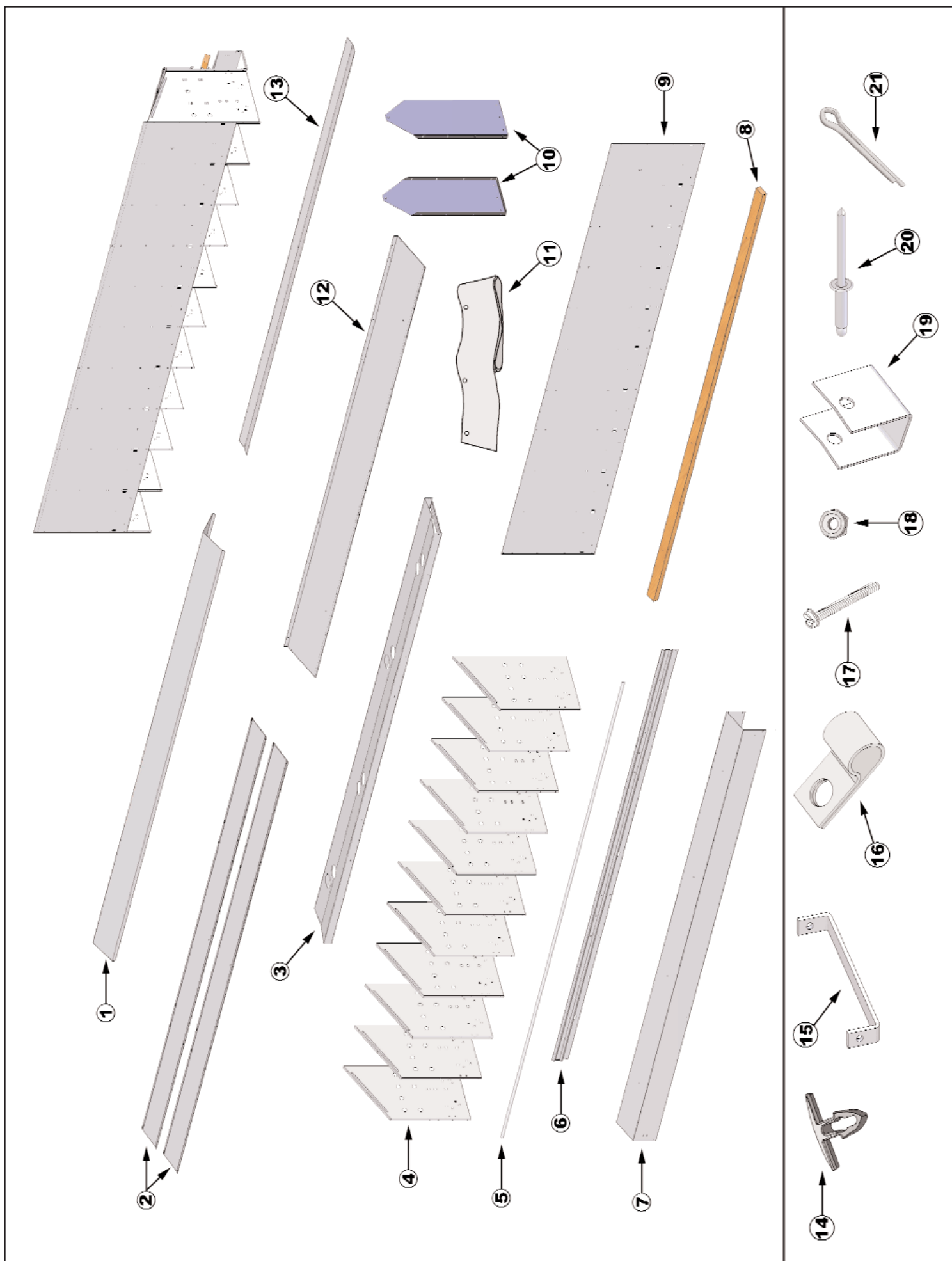
Read assembly guide completely before beginning setup. For most efficient assembly, two people should work together on nests.

Lire assemblée guide avant que commencer. Deux gens devoir travailler ensemble sur les nids.

Lea la asamblea guía completamente antes de empezar montaje. Para la más asambleas eficientes, dos personas deben trabajar juntos en nidos.

CENTER BELT NEST BODY ASSEMBLY AND INSTALLATION INSTRUCTIONS





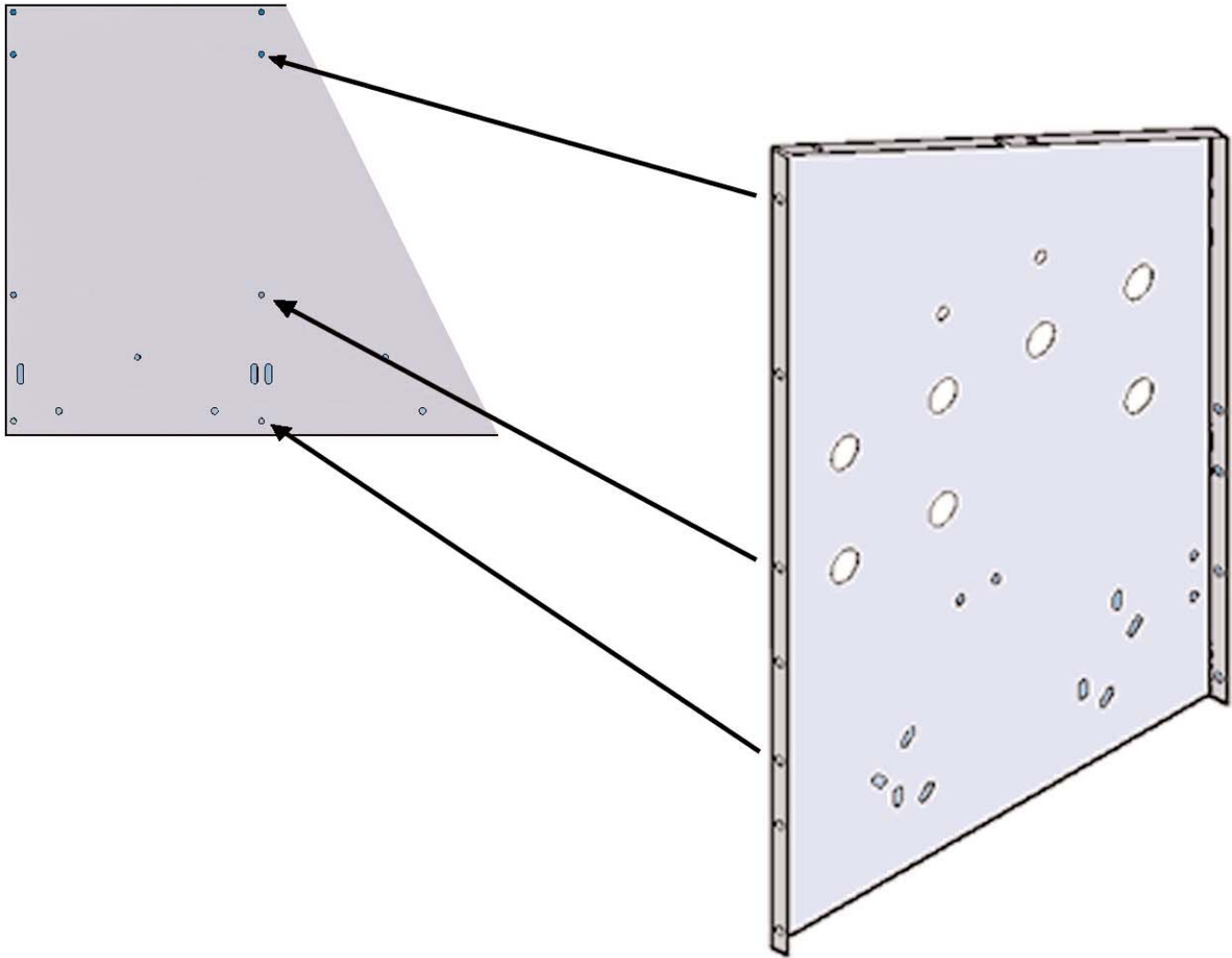
Part No.	Part Description	Parts Per Nest
1	16560077 COVER,CONVEYOR CBN CHORE-TIME	1
2	16500124 LID, C.BELT CLOSE-OUT UNIV.	4
3	16500143 TRAY:C.BELT 20 HOLE CONVEYOR	1
4	16500166 PARTITION:NEST UNIV-RTNR HOLES	22
5	16060026 WIRE:BTM SUPPRT GLV #5 95.125"	2
6	16560008 STRINGER: 20 HOLE NEST UNIV.	2
7	16500122 FRONT, CENTER BELT 20 HOLE	2
8	16-34533 PERCH: 95" - DRILLED	2
9	16500118 BACK, CENTER BELT 20 HOLE	1
10	16560067 END,CENTER BELT NEST UNIVERSAL	2
11	16060043 CURTAIN, CB NEST BLACK	1
12	16500010 TOP: 9.6" HOLE UNIV. NEST	2
13	16-30190 FLIPPER, 8FT NEST UNIV.	1
14	16-35585 RETAINER: PLASTIC T	24
15	16-104249 BRACE,FRONT CENTER BELT UNIV.	8
16	16-8904 CLAMP: HINGE SS 3/8 WIDE	16
17	16-90078 SCREW:10-24 x 2-1/4 HX HD WHSR	8
18	16-90076 NUT, HEX 10-24 W/NYLON INSERT	8
19	16500006 BRKT: PERCH / ROD SUPPORT UNIV	16
20	16-34096 RIVET: POP 3/16" AL AD62ABS SH	260
21	16-12500 PIN: COTTER STEEL 1/8" X 3/4"	6
NOT SHOWN		
22	16560036 RIVET PACK,NEST FRONT & HINGE (Long Rivet part # 16-33139)	1

Step 1.

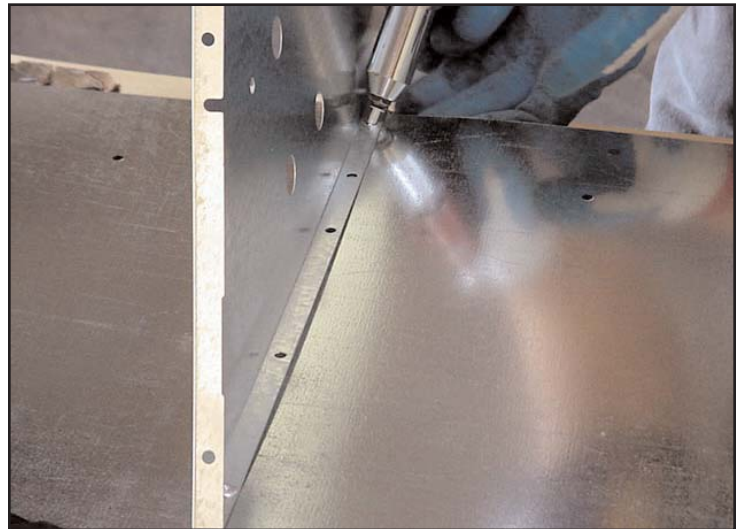
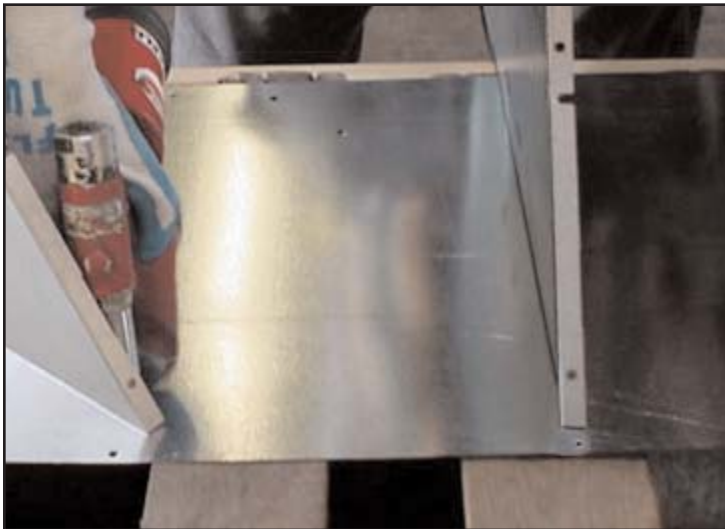
Rivet partitions to back. **DO NOT INSTALL END PARTITIONS AT THIS STEP.**

Top hole in partition goes to the second hole in top of the back. The bottom two holes of the Partition overhang the lower edge of the Back.

If plastic fronts are used, install them at this step using rivets.



End Partitions are NOT installed until Step 8.

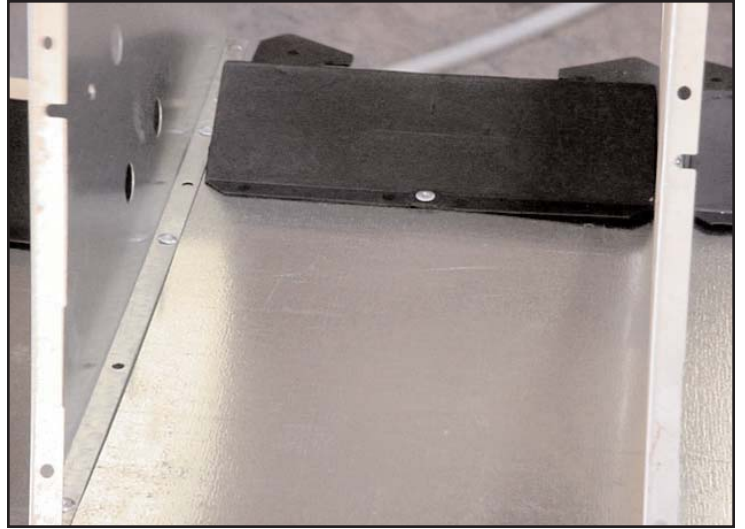


Step 2.

Install plastic fronts to nest backs between partitions.

NOTE:

If Plastic Fronts are NOT used, skip to step 3.

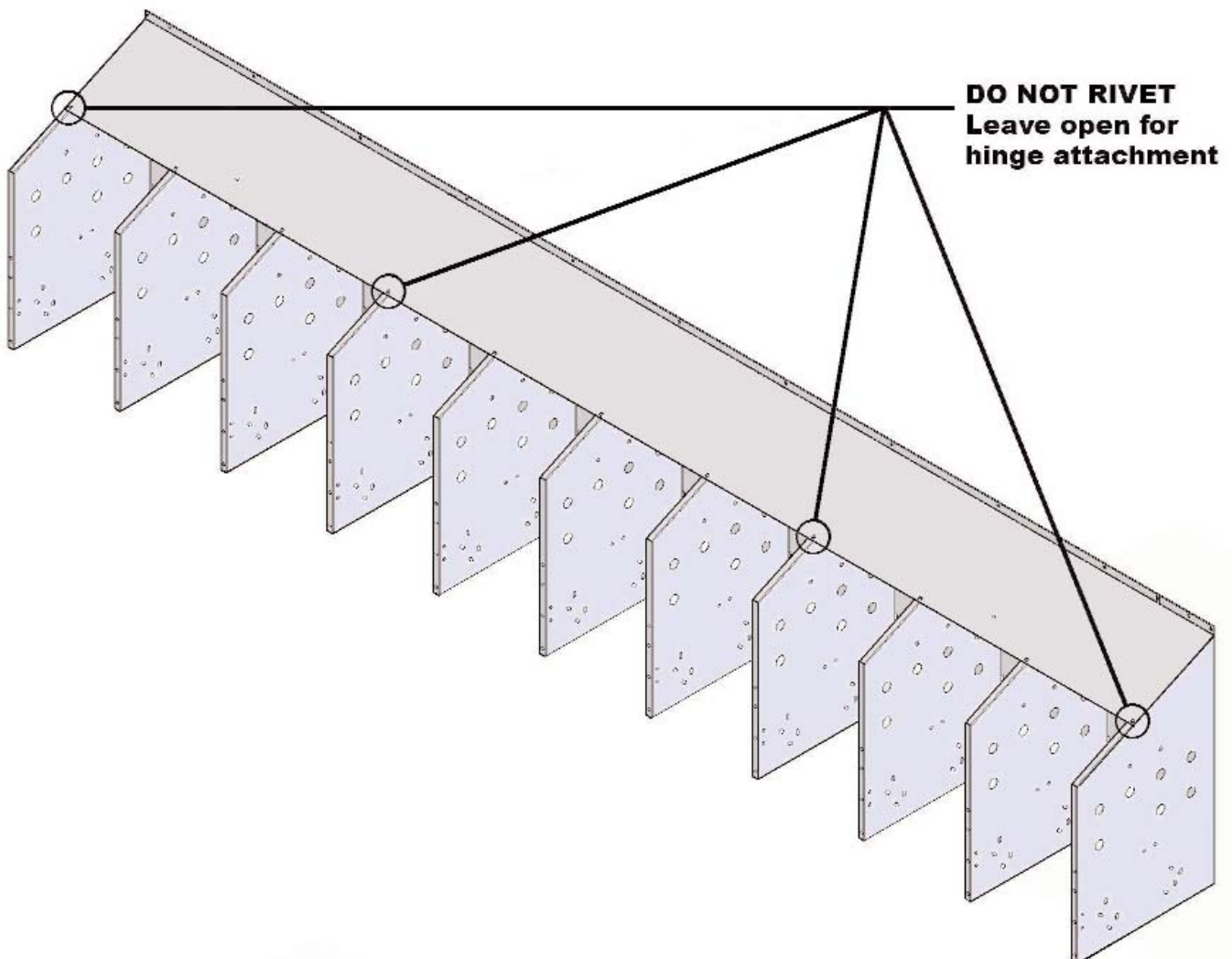


Partitions, Plastic Fronts installed on backs.



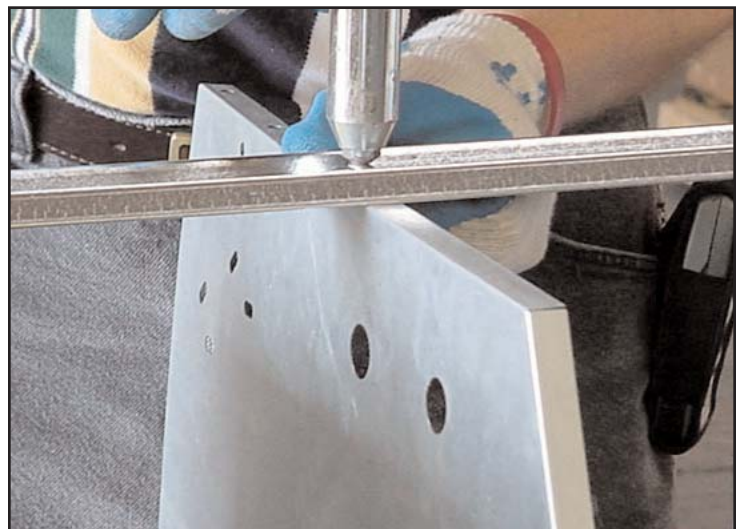
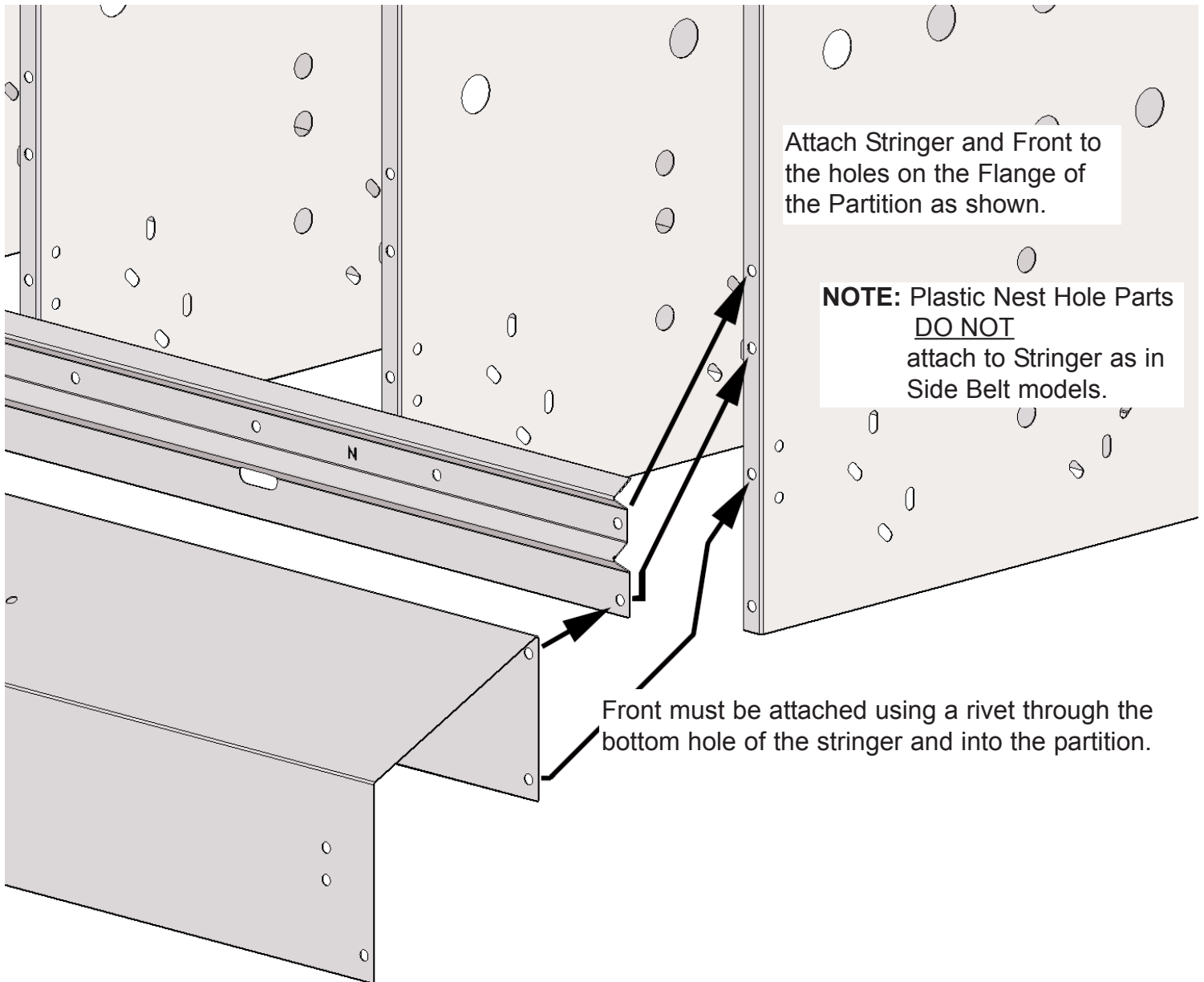
Step 3.

Install tops as shown by riveting tops to partitions and to back. **DO NOT RIVET** holes on end partitions or on partition numbers three and seven (both sides). Leave these holes open for attachment of hinges.



Step 4.

Install stringers and Fronts to nest partitions using rivets.



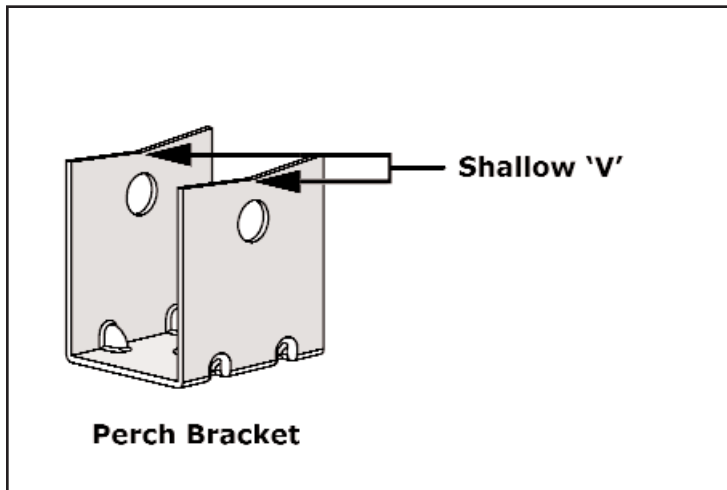
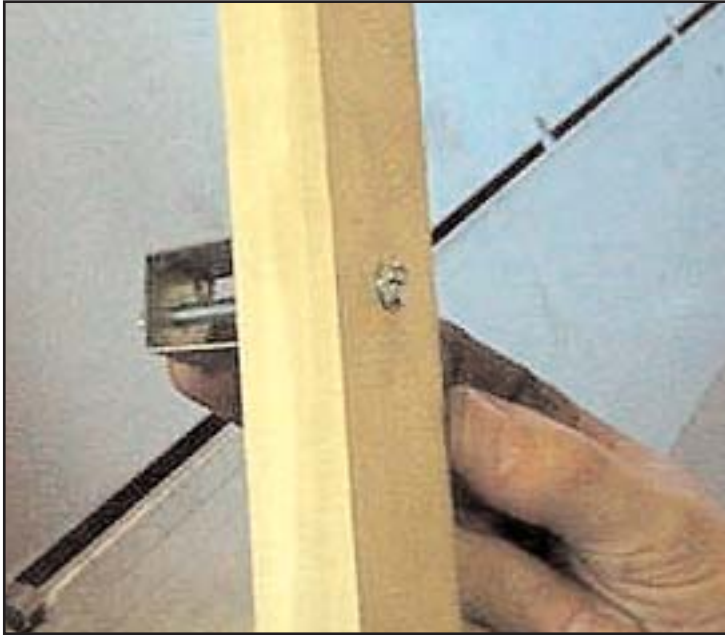
Step 5.

NOTE: This step can be done prior to step 4 or after, as preferred.

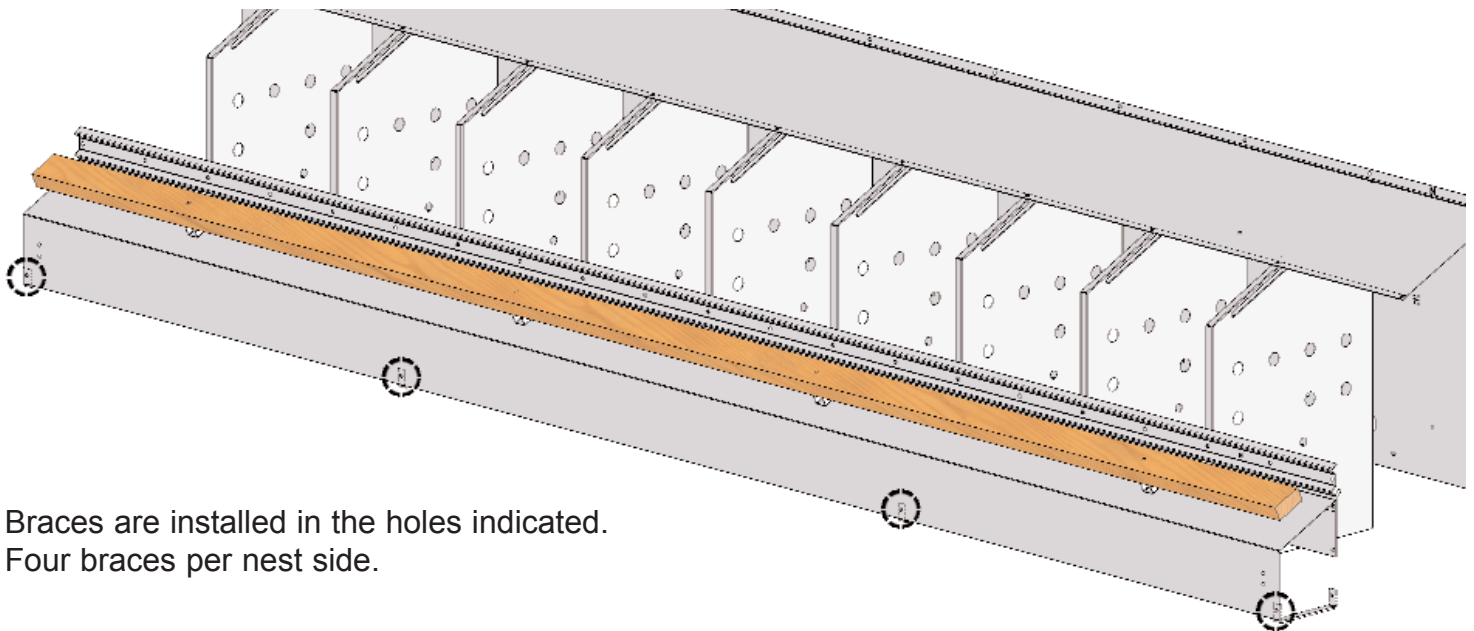
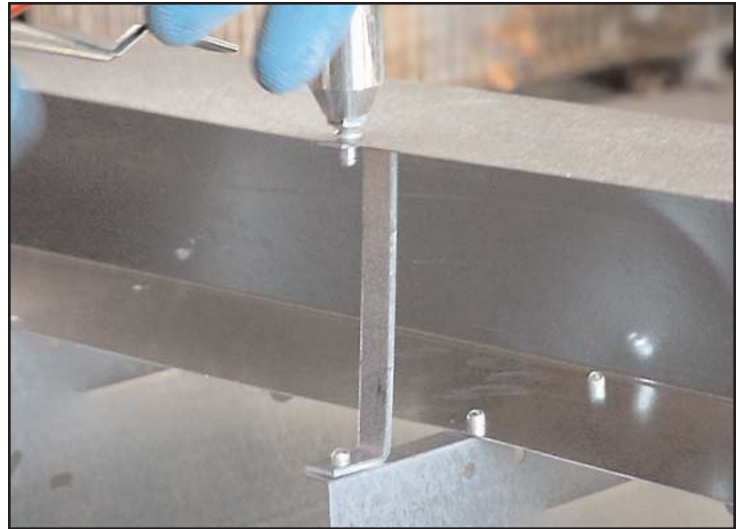
Install Perches on Fronts.

“V” edge of bracket must face wooden perch.

Attach perches to fronts using 10-24 hardware as shown.



Step 6. Install braces underneath the Fronts for stability. Four Braces required per Nest Front.



Braces are installed in the holes indicated.
Four braces per nest side.

View showing Partially Assembled nest half-body. Note that End Partitions are not yet installed.





Step 7.

Attach vinyl curtain strip to rear panel using 12 plastic “T” retainers.

TIP: Use needle nose pliers to squeeze “T” clips for easier assembly.



Step 7 - Continued

Attach curtain to back as shown using clips supplied.



Step 8.

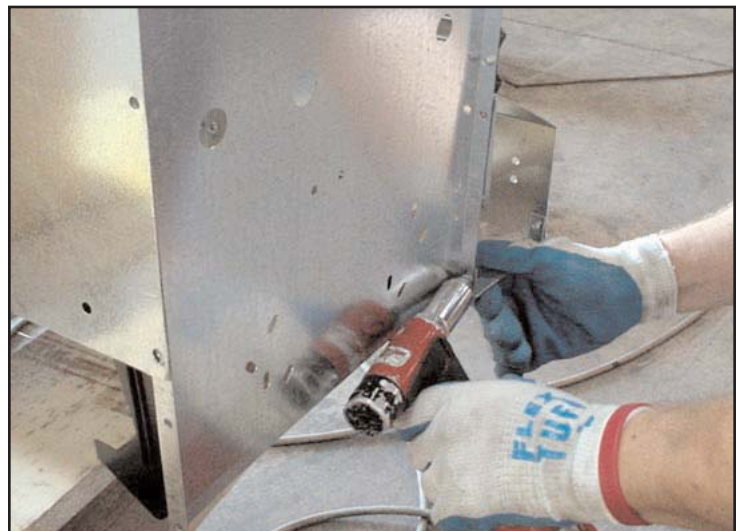
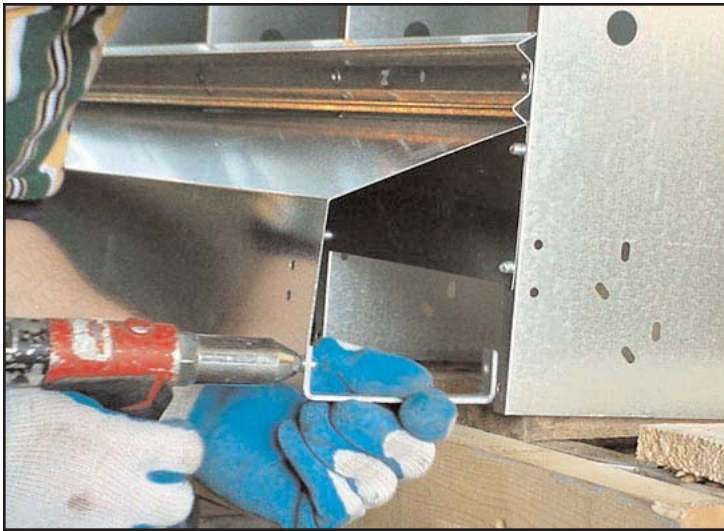
Attach End Partitions. Rivet to Fronts, Tops and Stringers.

DO NOT RIVET END PARTITIONS TO BACK UNTIL STEP 11.

End Partitions must be riveted to the back at the same time as the End Panel.



Attach braces to Front and End Partitions.



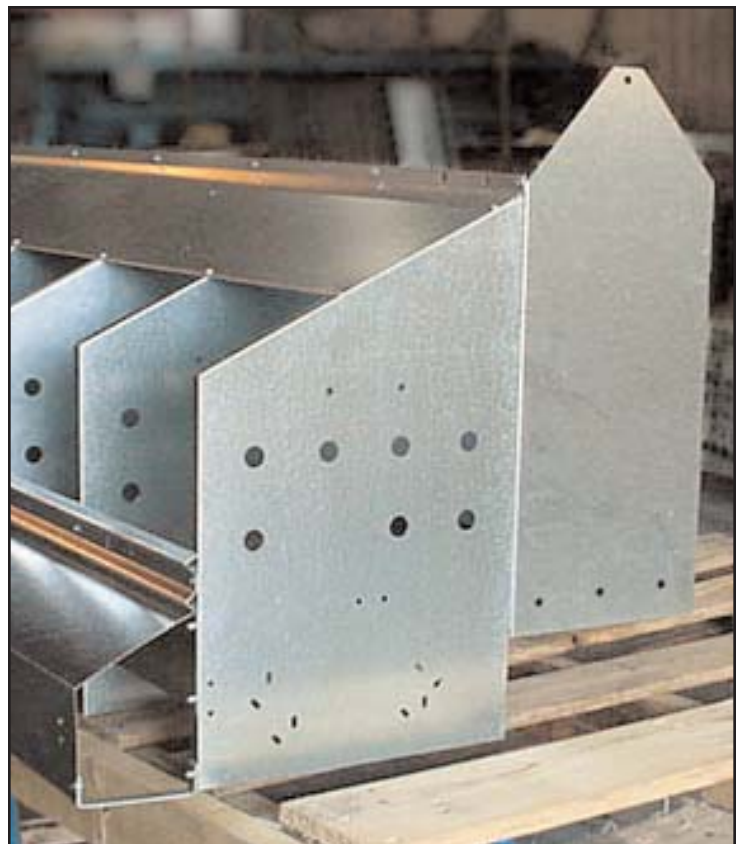
Step 9.

Attach End Panels with End Partitions to Back.

DO NOT RIVET BOTTOM TWO HOLES IN END PARTITIONS- LEAVE OPEN FOR PASSAGEWAY AND EGG TRAY ATTACHMENT.



DO NOT RIVET
IN THESE TWO
HOLES.

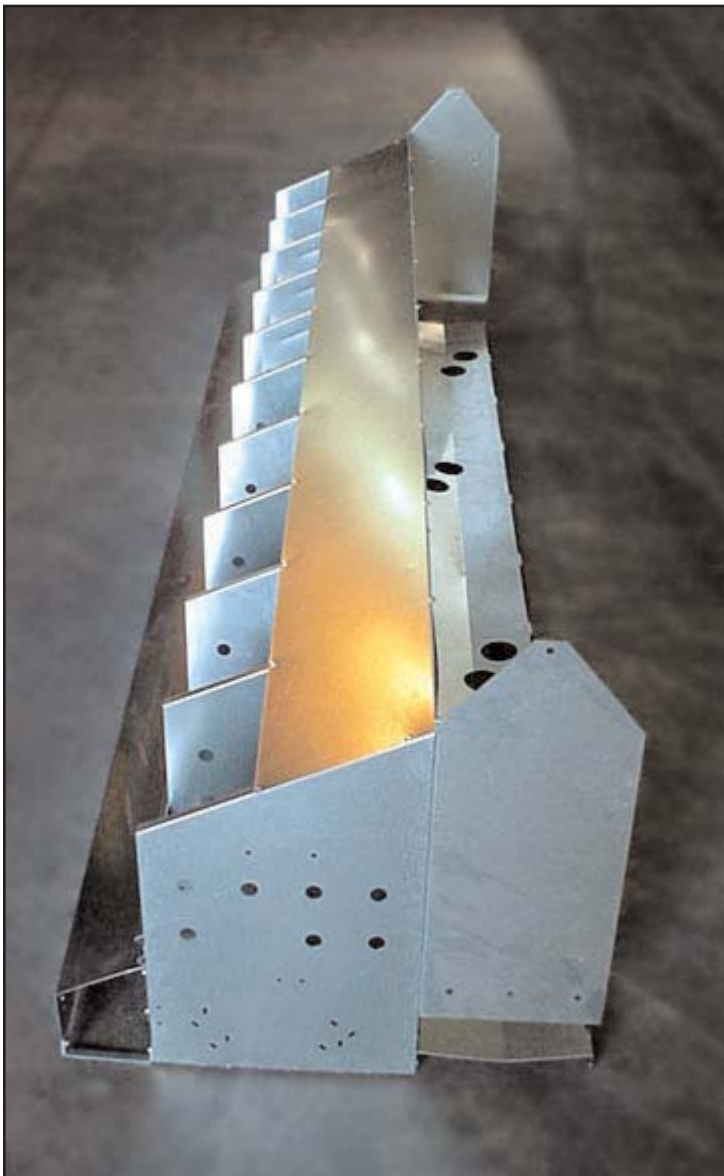


Step 10.

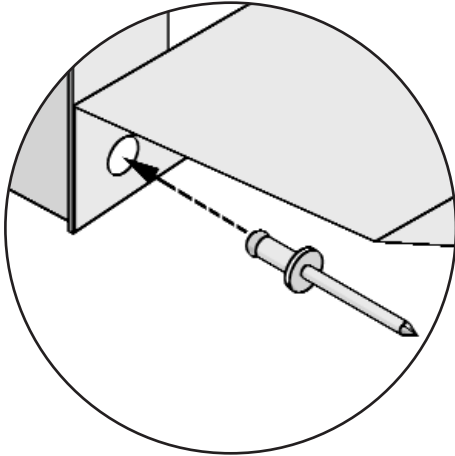
Attach Egg Tray Assembly to one half of Nest Body



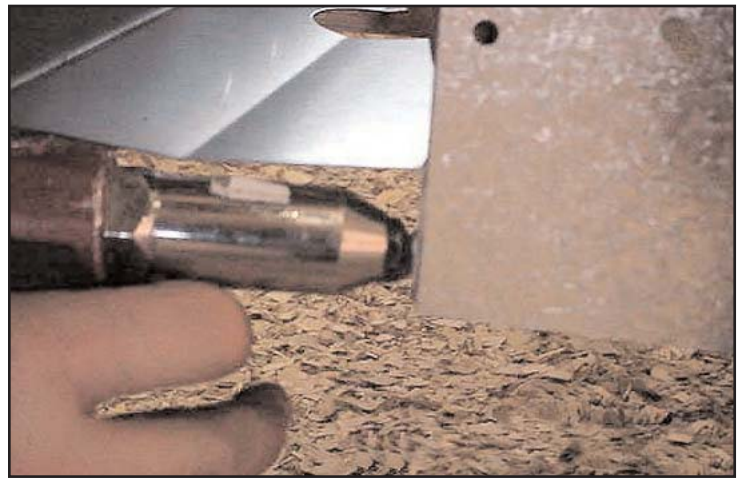
Attach egg tray to BOTTOM HOLE in Partitions using rivets

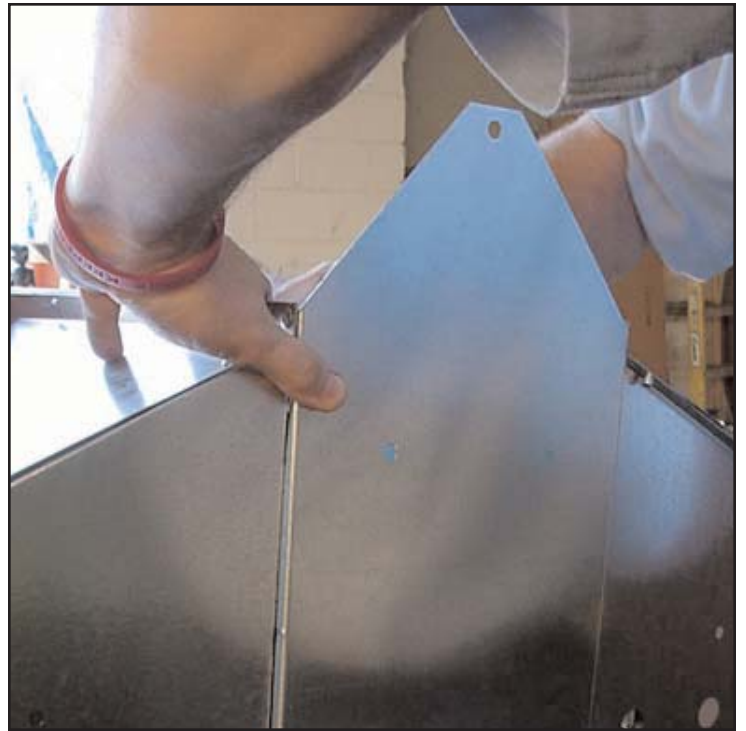


Step 10 - Continued



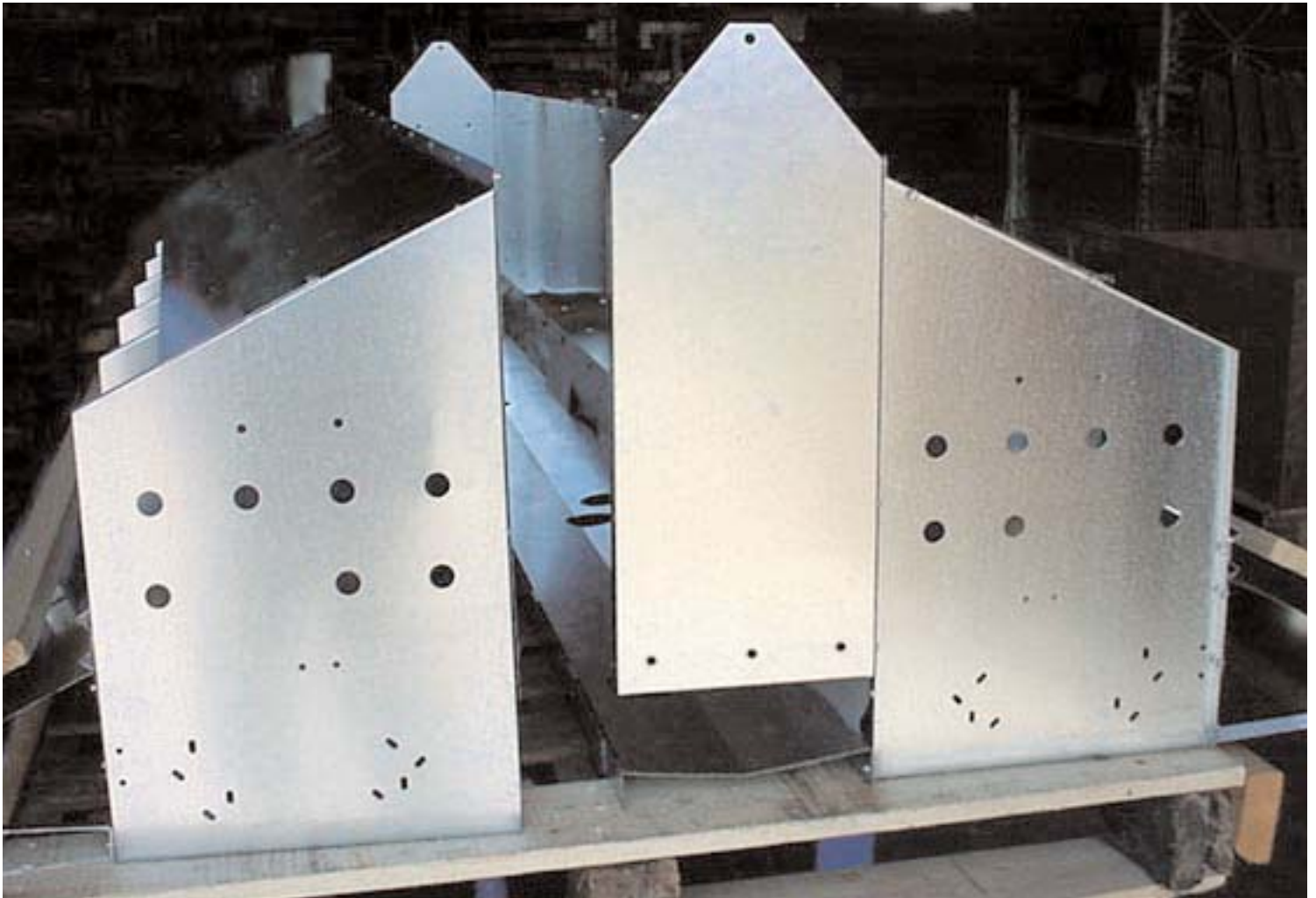
The stem of the installed rivet should be away from the egg belt on the return side in order to avoid snagging and/or damage of the egg belt.





Step 11.

Assemble Halves by attaching ends to backs and partitions.
Build opposite half of nest by repeating steps 1 through 7.



Fasten End Panels to 2nd half, fasten Egg Tray to Partitions underneath

Step 11 - Continued



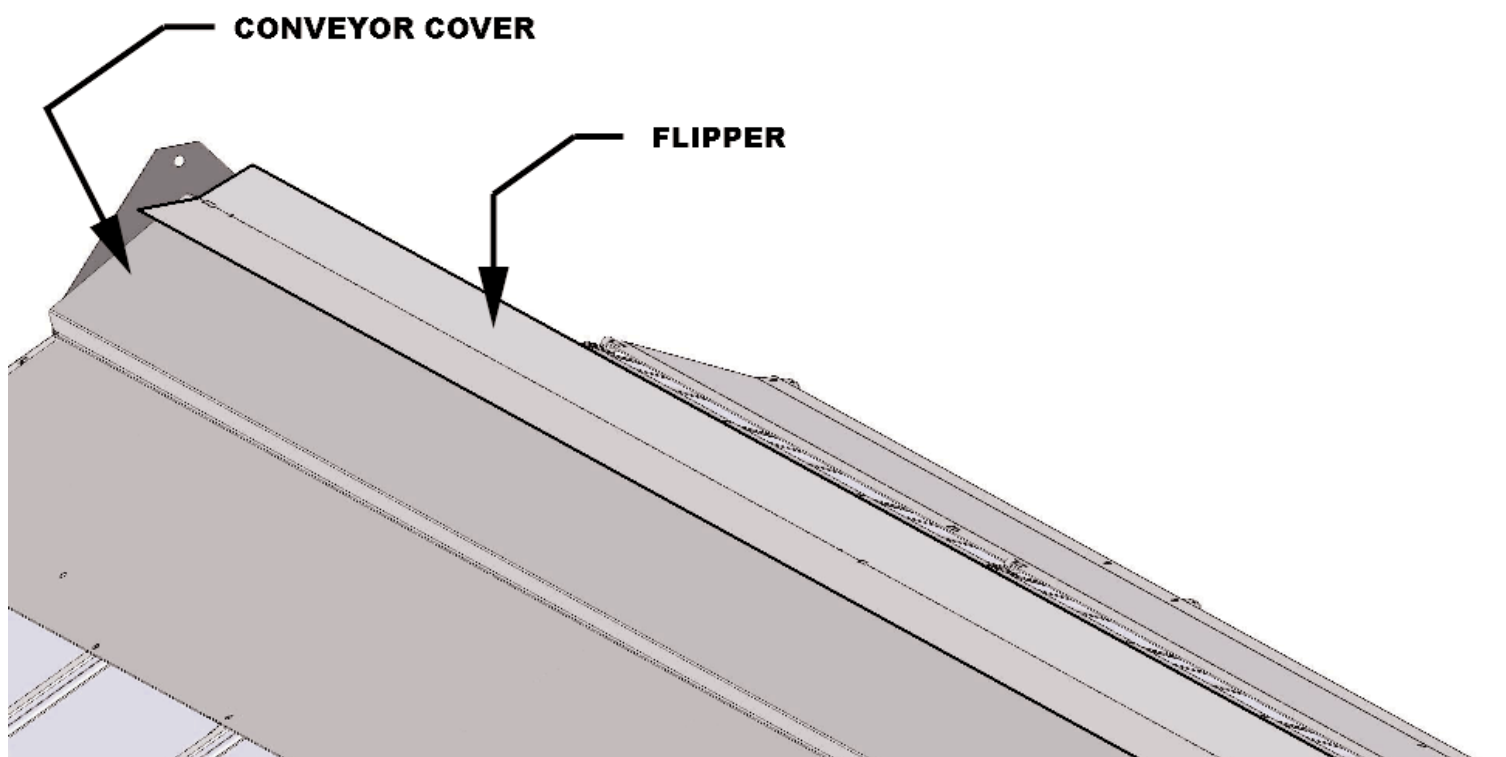
Join the two halves of nest body on the underside partitions to egg tray assembly.

Step 12.

Attach flipper to conveyor cover using cotter pins.



Attach conveyor cover to nest.

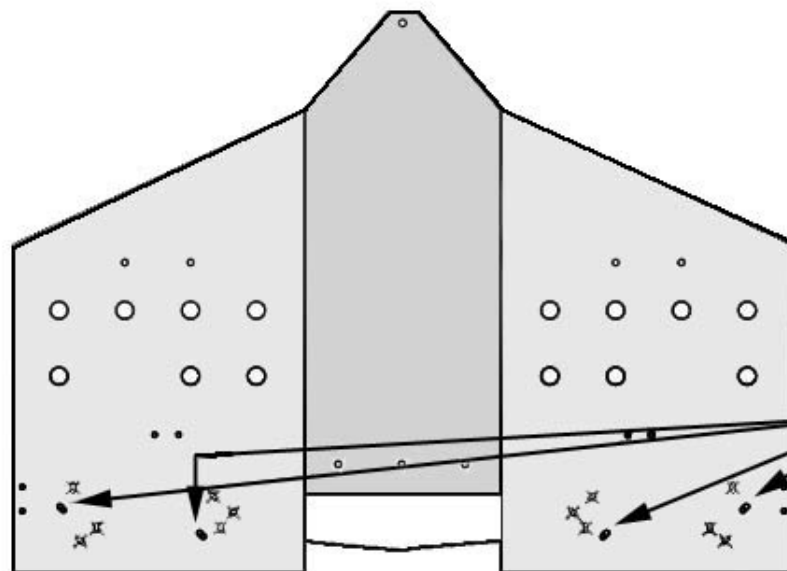


STEP 13-A. Slide **Support Rods** through the appropriate positioning slots in the end partition.
See Diagrams below.

**USE THESE
HOLES**



**Rod Positions For
MOLDED BOTTOM AND CHUTE
In Center Belt Nests**

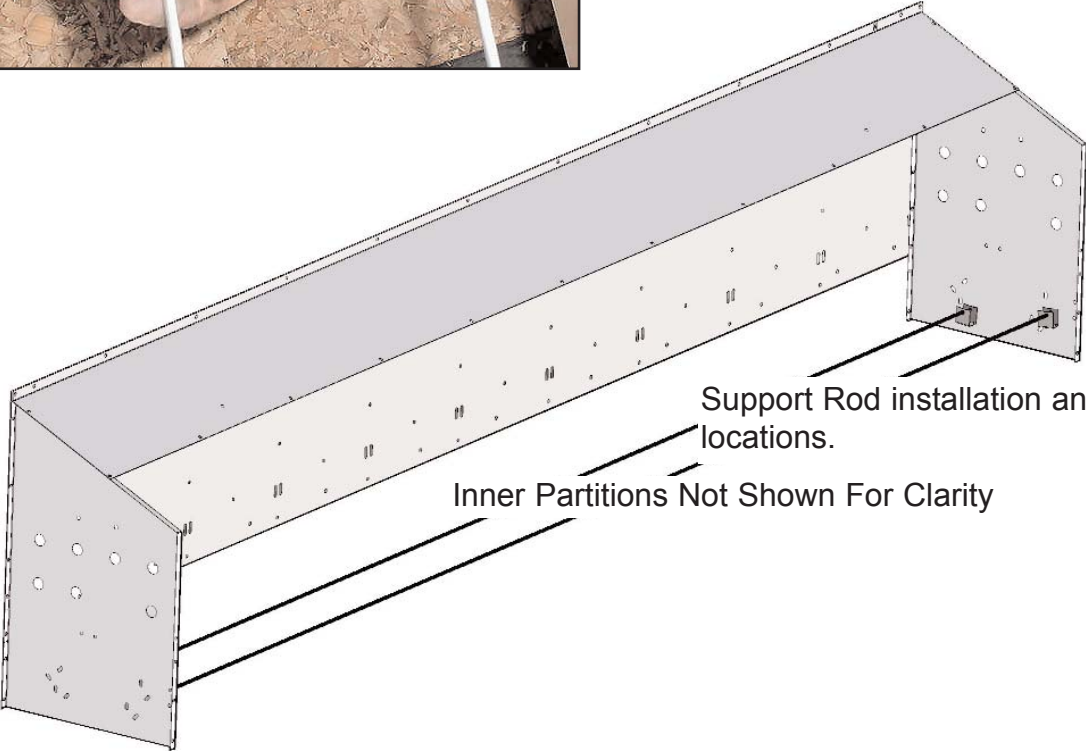


**USE THESE
HOLES**

**Rod Position For
PLASTIC BOTTOM In
Center Belt Nests.**

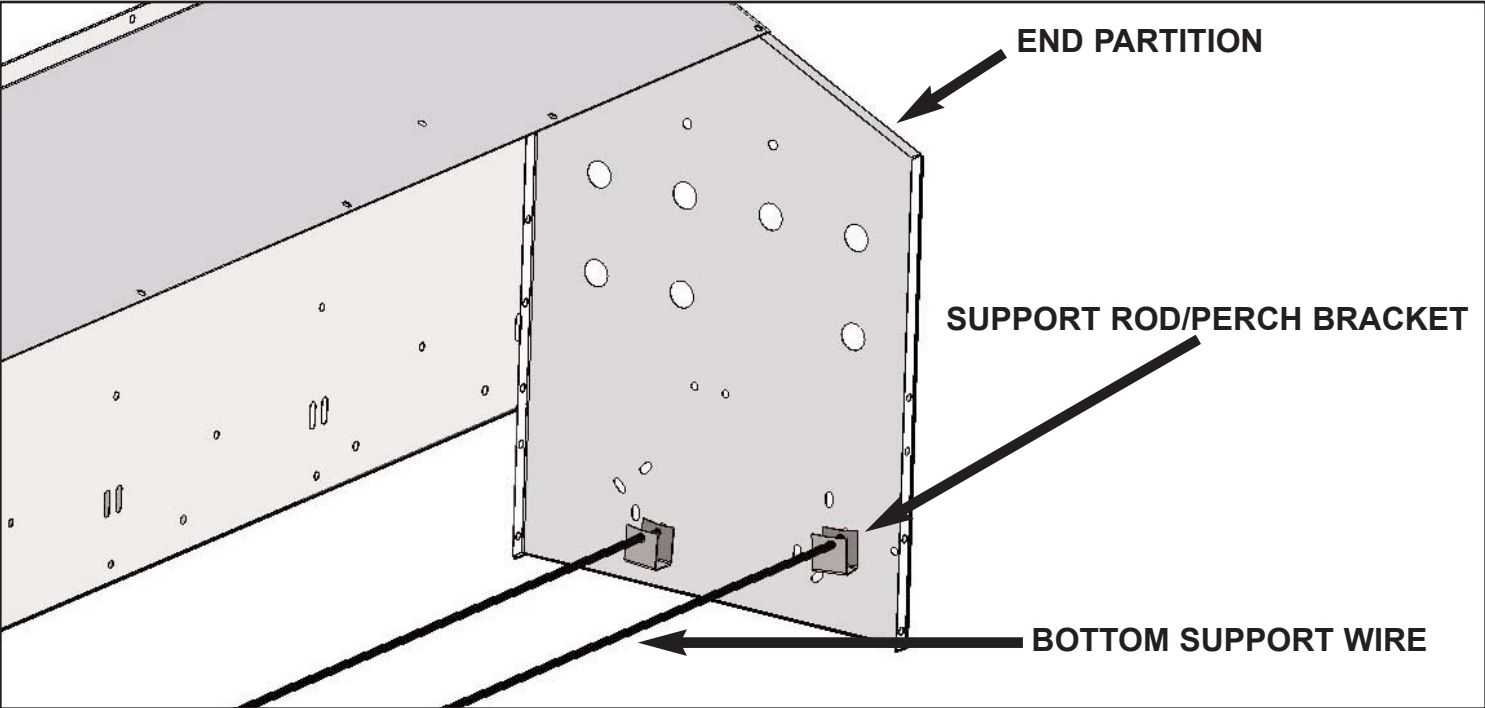


Step 13-B. Install Bottom Support Rods / Perch Brackets using rivets on End Partitions only.



Support Rod installation and Rod Support Bracket locations.

Inner Partitions Not Shown For Clarity



END PARTITION

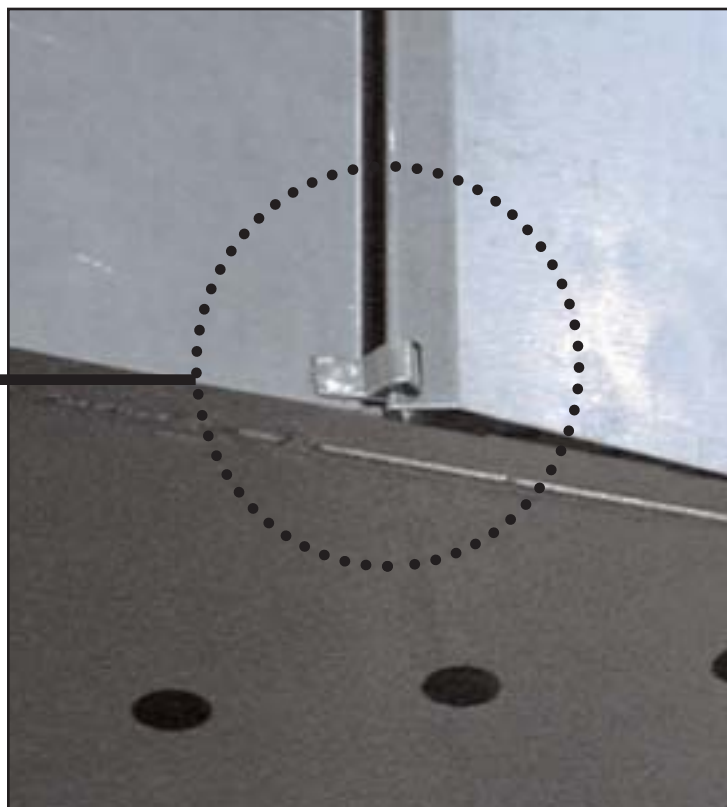
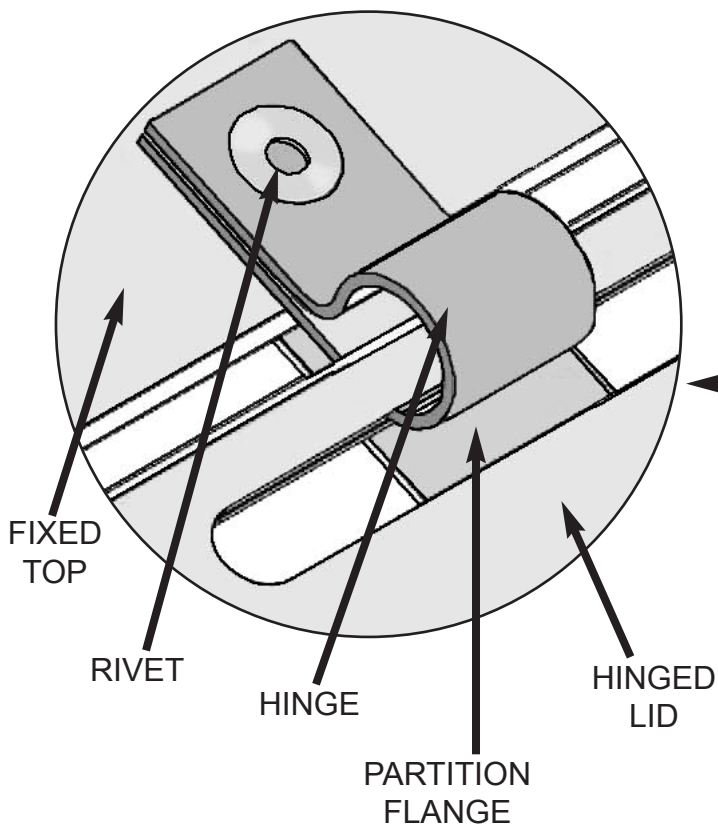
SUPPORT ROD/PERCH BRACKET

BOTTOM SUPPORT WIRE

STEP 14.

NOTE: For Nests without lids, skip to Step 16.
Attach the **Nest Upper Lid** as follows:

- a. Insert **Hinge Clamp** into middle slot on **Nest Lid**.
- b. Compress **Hinge Clamp** with pliers or guide nail and align with middle hole on **Top** and **Partition**. Fasten with rivet through **Hinge** and **Top** into **Partition**.
- c. Repeat for **Lid/Hinge/Partition** connection on each end of **Lid**.



Step 15.

Attachment of lower lid.

When riveting the hinge on the closeout lid the hinge is placed under the lip of the nest top.

UPPER LID

LOWER LID



UPPER LID

LOWER LID



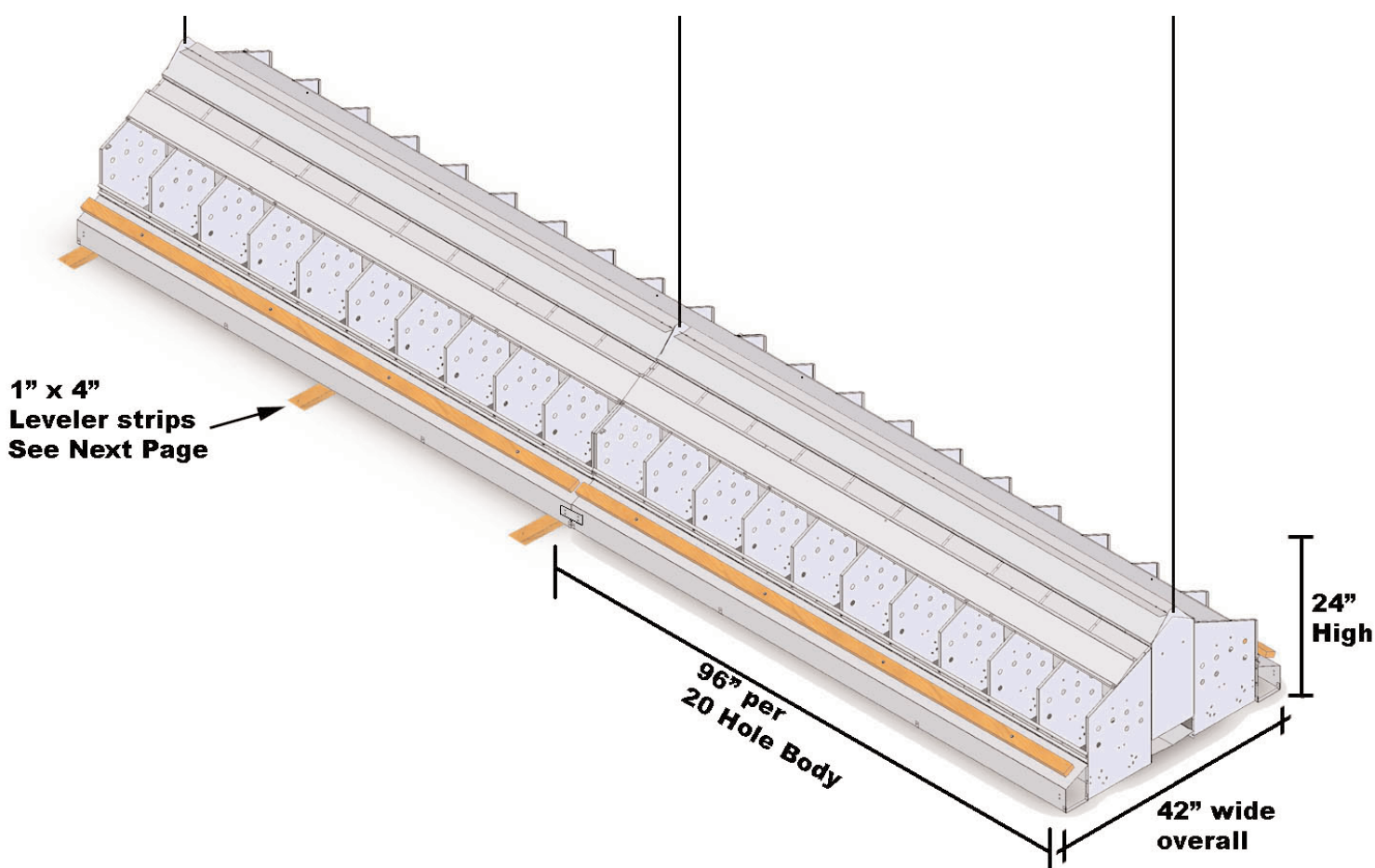
Step 16.

CONNECTING NESTS TO WINCHING SYSTEM

Select winches that will safely support the system. An 8' section weighs approximately 128-130 pounds.

WE, THE MANUFACTURER, CANNOT BE RESPONSIBLE FOR THE CAPABILITIES OF THE STRUCTURE TO SUPPORT THIS SYSTEM. FOR WEIGHT LOAD CAPABILITIES, CONTACT YOUR BUILDING CONTRACTOR.

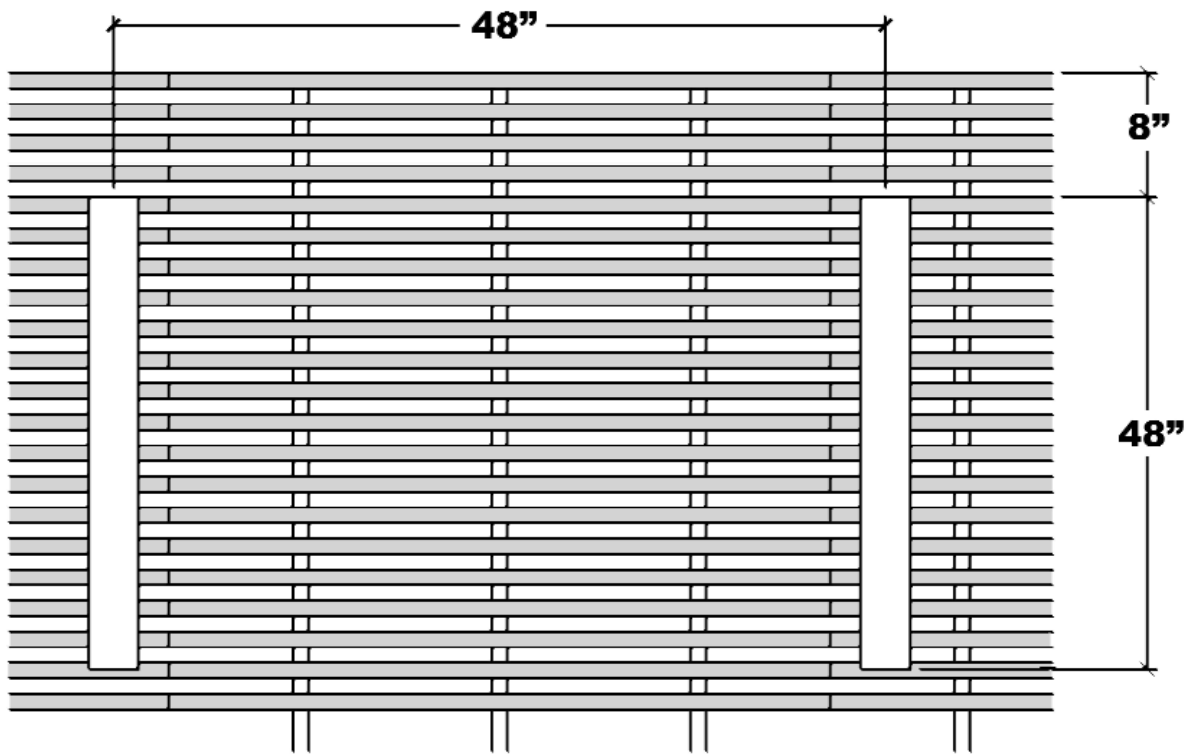
A cable drop is required at the end of each nest section. Cable saddles or 'S' hooks may be used to attach to the nest brackets.



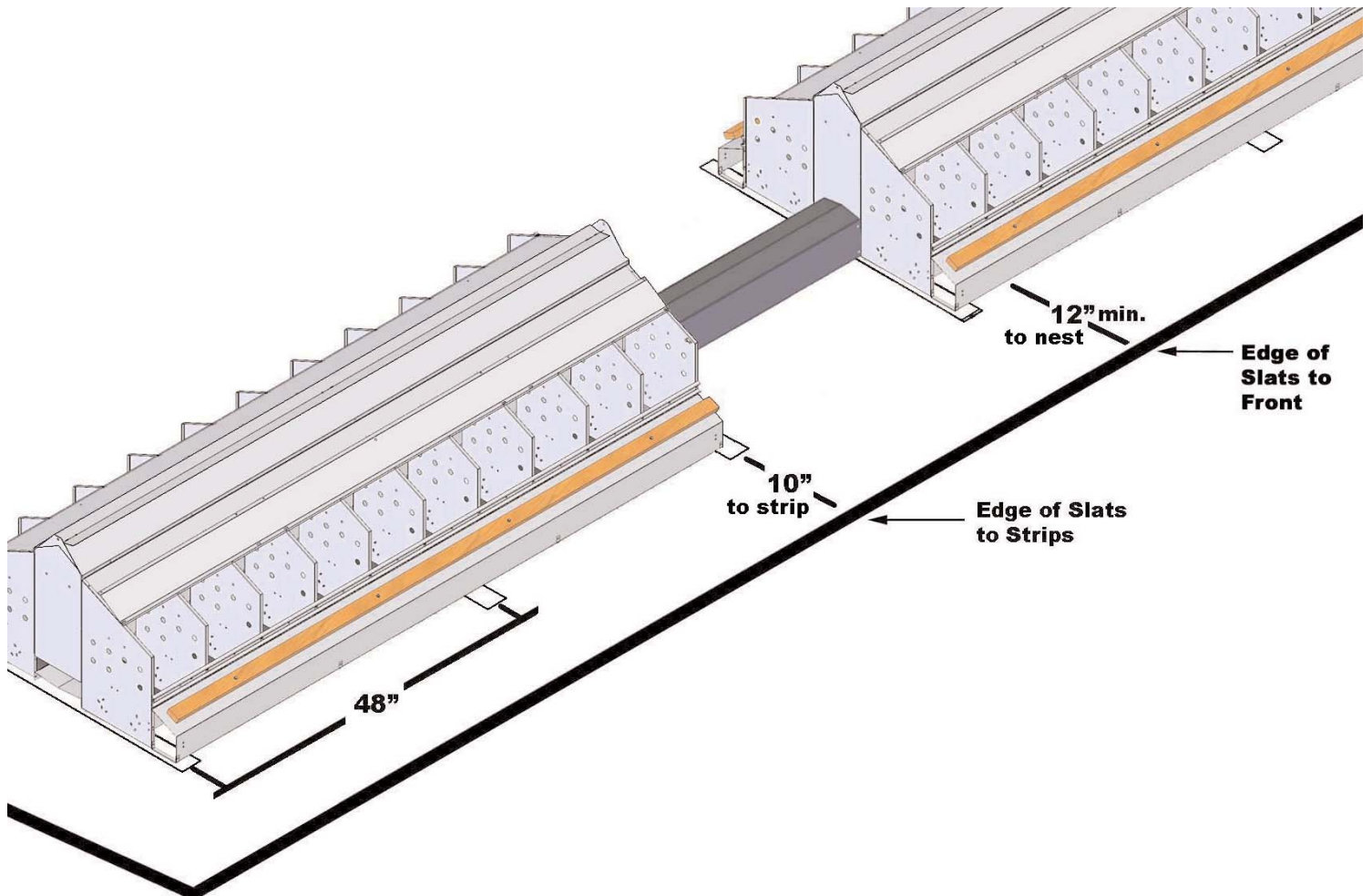
When placing the nest system on slats, whether wooden or plastic, Agile Mfg. requires that the nest line be level along the entire length of the line. This can be accomplished by placing 1" x 4" strips over the slats and underneath the nests as a base to shim the nests.



Two nest bodies joined using 16-3558 Connector Brackets and Suspension Points.



8' Section Placement of 1" x 4" x 48" strips



The layout of the nest system has been designed for your specific requirements. Follow the layout to ensure all components are correctly placed. Standard order is for nest layout with all “DOUBLE” nest sections. Other layouts may be special ordered.

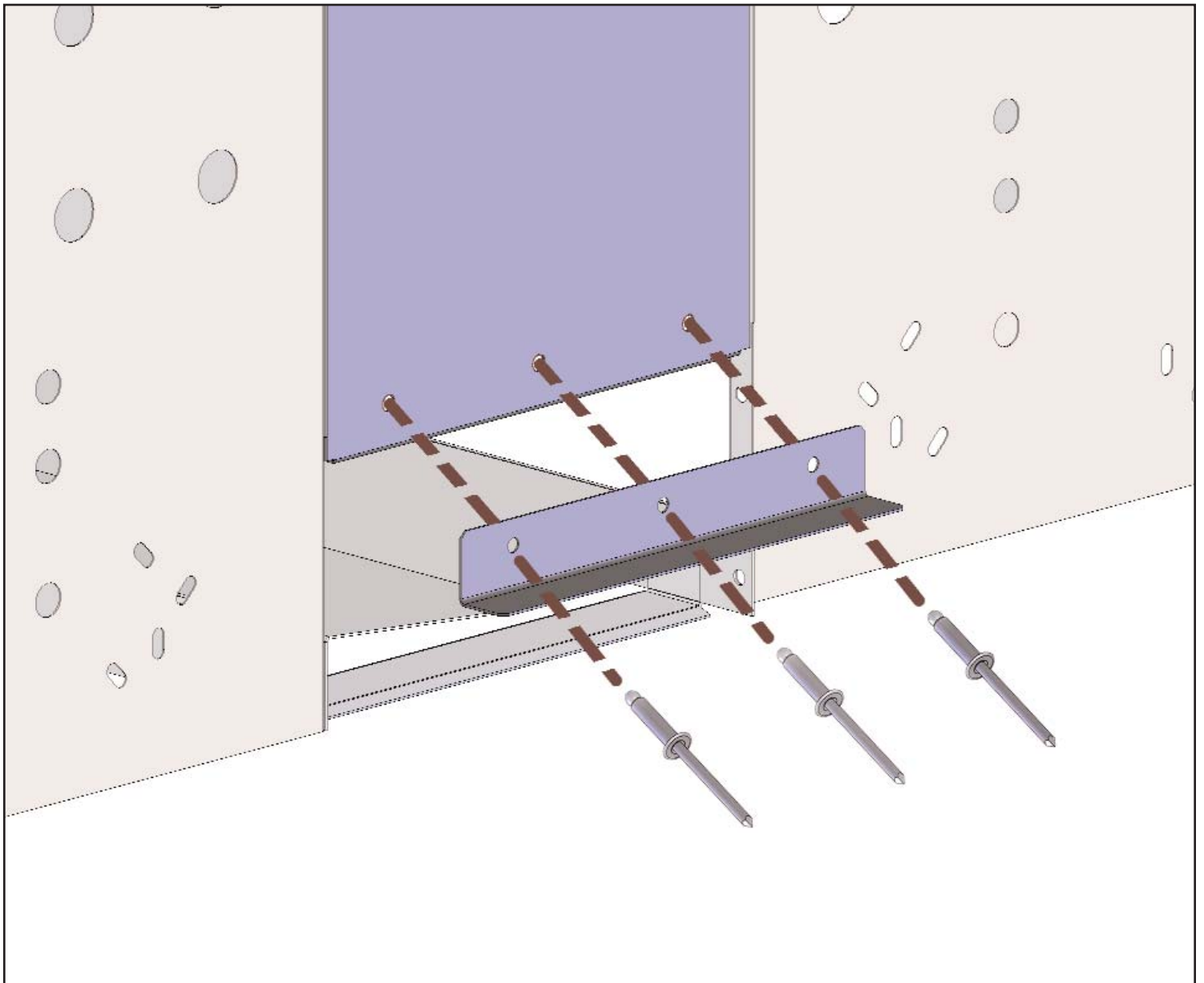
NOTE: It is essential that the sections be properly aligned and leveled to allow free movement of the conveyor belt.

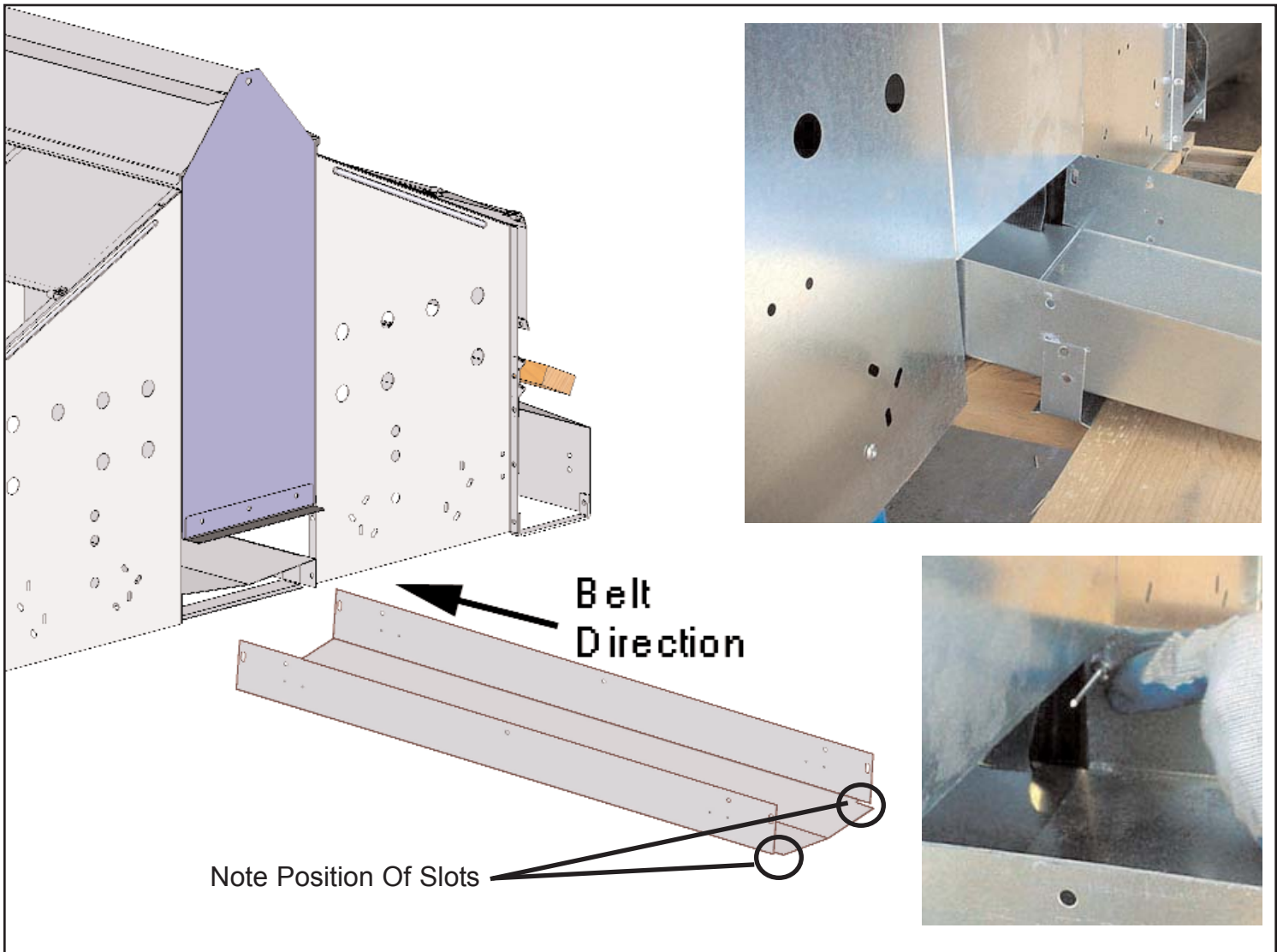
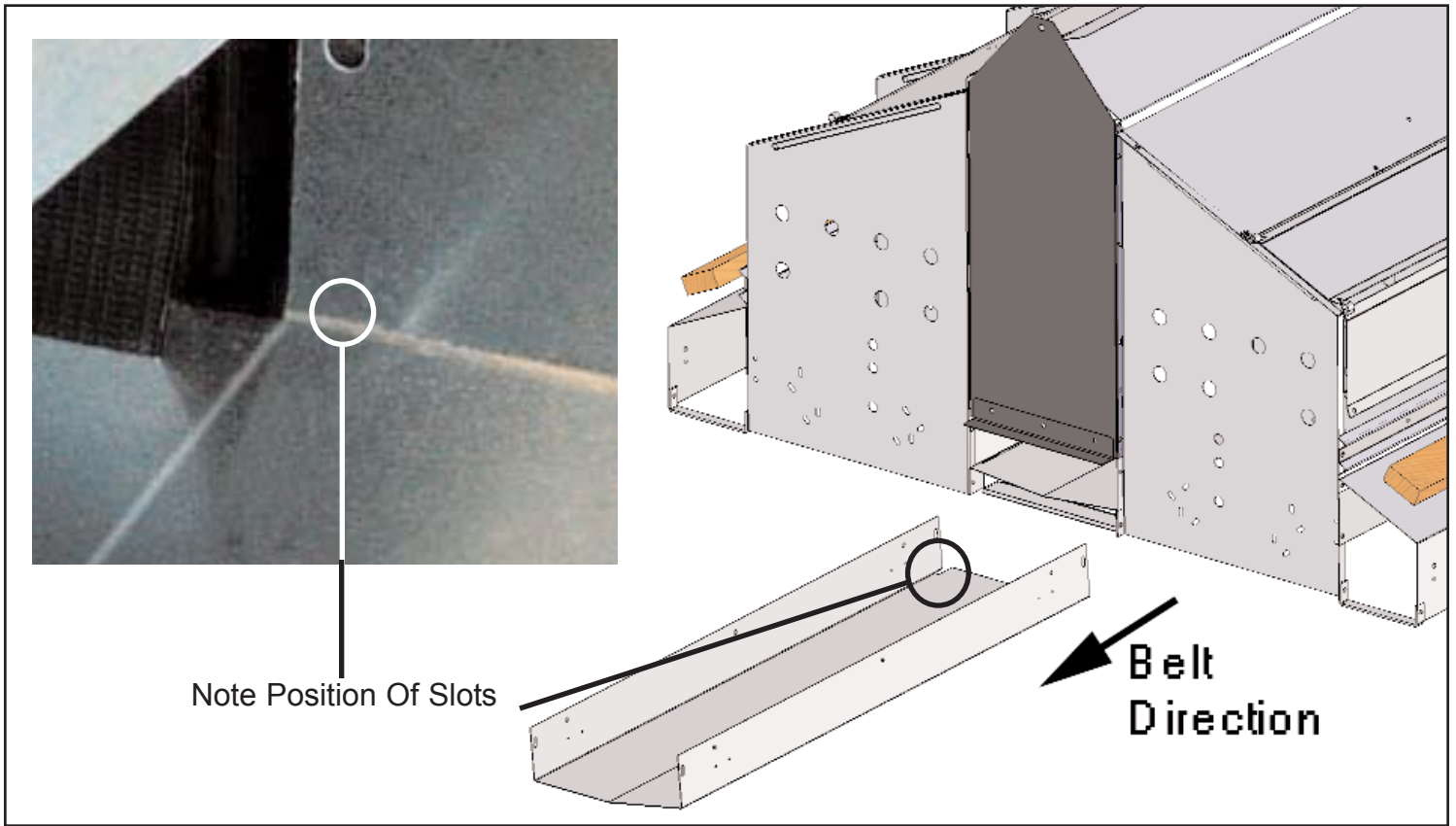
Install conveyor passageways between nest sections as required. Be sure to follow instructions.

NOTE: improper assembly may cause excessive belt wear. Proper assembly provides a shingling effect for the belt to travel on the conveyor.

Attach conveyor passage support to the End using three rivets as shown.

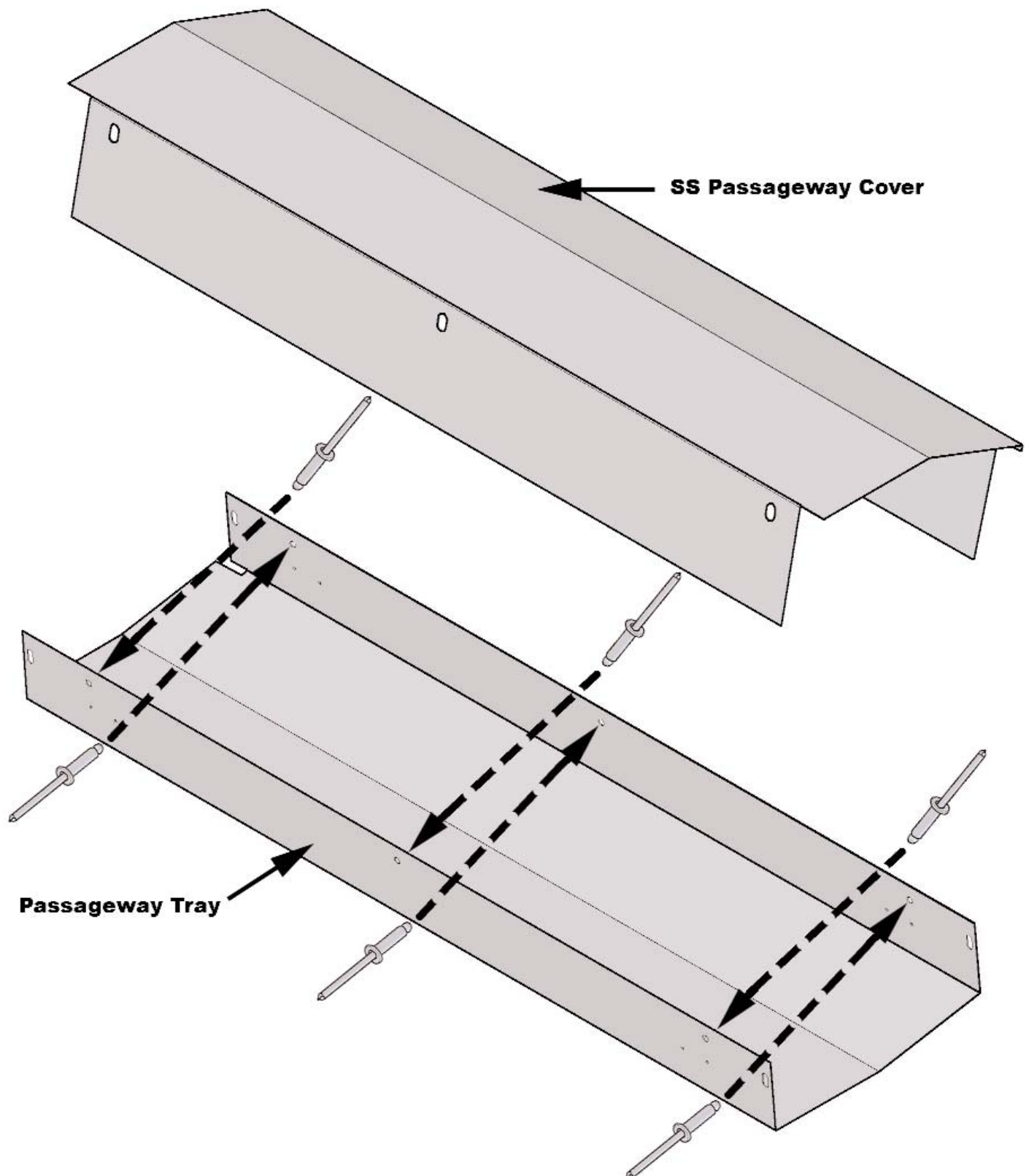
NOTE: 16560068 Center Belt Passageway Support Angle ships with Passageway Kits





ADD LATCH RIVETS

Place rivets through trays with shoulder inside out. Hook covers over rivets
(Apply Rivets to BOTH sides)



PASSAGEWAY COMPONENTS

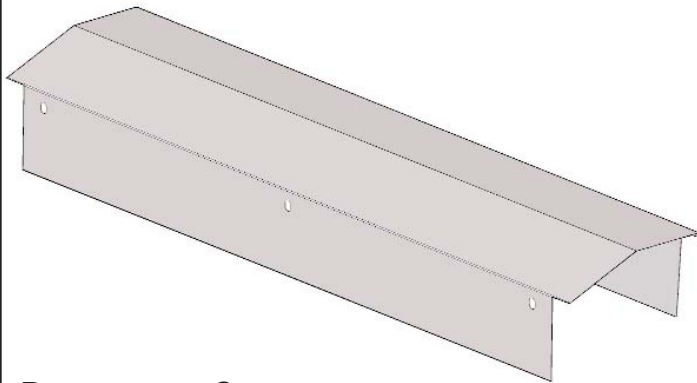
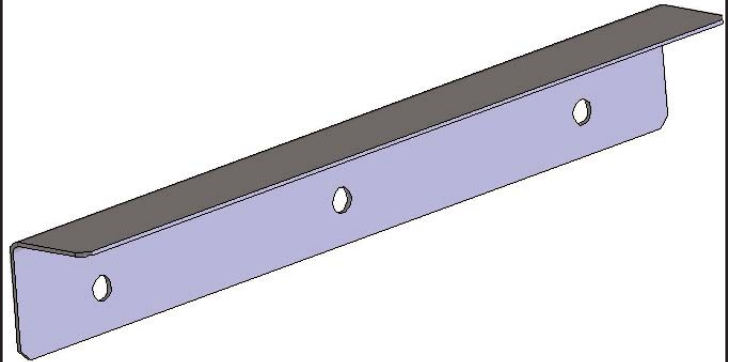
16-33139 RIVET: POP 3/16" AL AD64ABS
LG



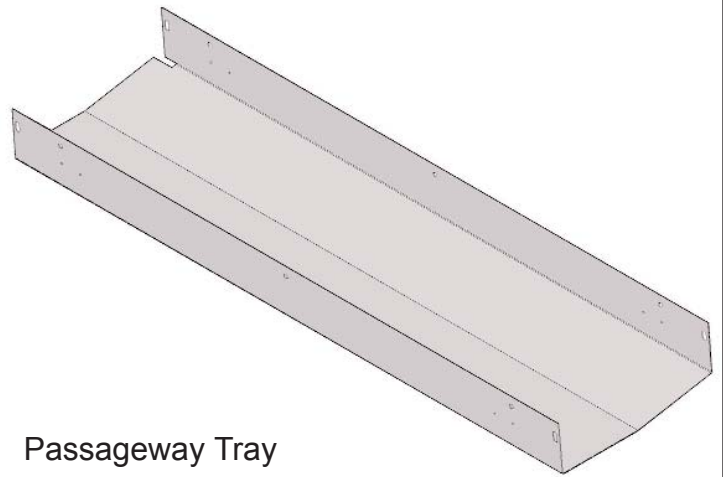
16-34096 RIVET: POP 3/16" AL AD62ABS
SH



16560068 ANGLE,C.BELT P-WAY SPPT



Passageway Cover



Passageway Tray

16560071 PASSAGEWAY,8" X 18" SS CBN KIT

16-104170 COVER: PASSAGEWAY 24" SCBN1010

16-104163 TRAY: PASSAGEWAY 18" SCBN1010

16560072 PASSAGEWAY,8" X 24" SS CBN KIT

16-104170 COVER: P-WAY SS 24" SCB

16-104164 TRAY: PASSAGEWAY 24" SC

16560073 PASSAGEWAY,8x28-3/4 SS CBN KIT

16-104171 COVER: PSSGWY SCBN 1010 28-3/4

16-104165 TRAY: PSSGWY SCBN 1010 28-3/4"

16560074 PASSAGEWAY,8" X 36" SS CBN KIT

16-104172 COVER: PASSAGEWAY SCBN1010 36"

16-104166 TRAY: PASSAGEWAY SCBN 1010 36"

16560075 PASSAGEWAY,8" X 48" SS CBN KIT

16-104173 COVER: PASSAGEWAY 48" SCBN1010

16-104167 TRAY: PASSAGEWAY 48" SCBN1010

SUSPENSION COMPONENTS

00102368 Winch manual 3000 pound



Cable Sleeves

00101733 3/16"



00101725 1/8"

Cable Clamps

00101758 3/16"



00101741 1/8"

00100420
3 1/2 Cast Pulley



10106151
1 3/4 Nylon Pulley



00101741
2 1/2 Steel Pulley



16-95824
1 1/2 Solid Pulley



00101824
7/8 Nylon Pulley



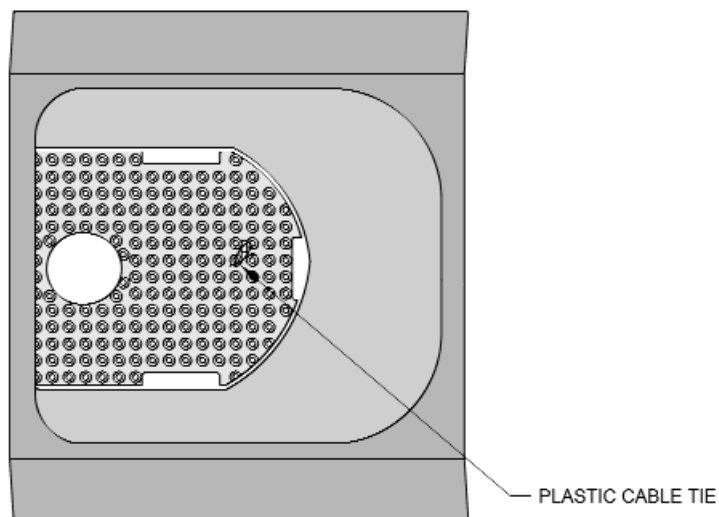
00101865 HANDLE LONG ELEC. 8'
00101691 CABLE 3/16" 7 X 7 WEAVE
00101683 CABLE 1/8" 7 X 7 WEAVE

Install **Pads** and **Bottoms** into nest holes per the following diagrams.

- a. Molded Bottom and Chute
- b. Finger Pad
- c. Turf Pad
- d. Full Turf Pad
- e. Wire Bottom and Blue Plastic Pad

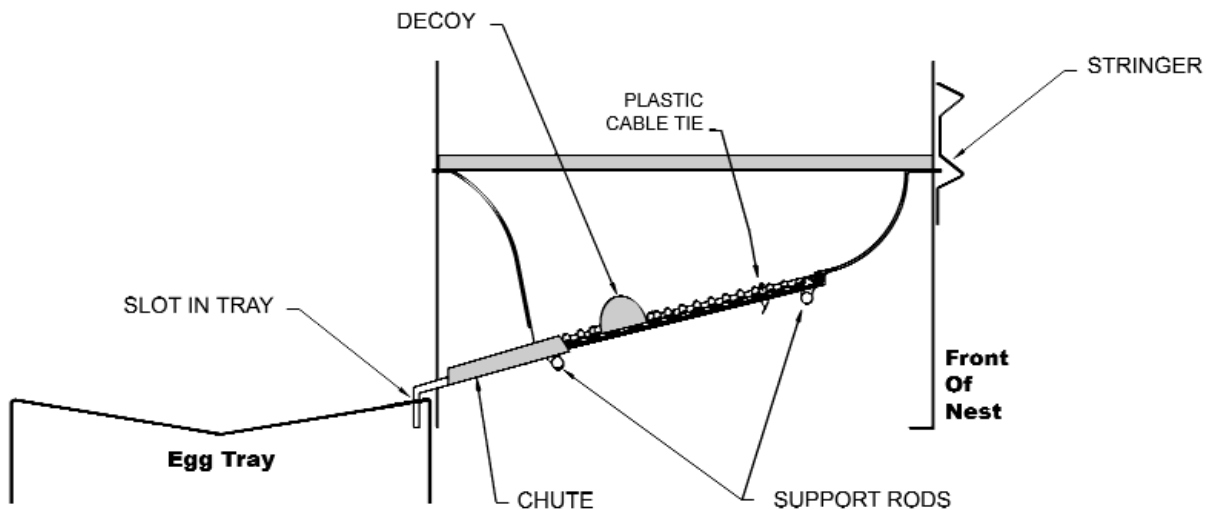
MOLDED NEST BOTTOM ASSEMBLY

1. Assemble decoy egg, nest pad to molded nest bottom.
2. Secure Finger Pad with plastic cable tie. Insert Cable Tie from underside of Nest Bottom through small hole in Nest Bottom through matching hole in Finger Pad back down through adjacent hole in Finger Pad through larger hole in nest bottom. Close Plastic Cable Tie. Do not over tighten tie.



CHUTE AND NEST INSTALLATION

1. Insert lip of chute into slot in tray and over front support rod.
2. Place the nest bottom assembly into nest opening with door facing out. Insert front lip of molded nest bottom into lower groove on the stringer then press back of molded nest bottom down so it rests on support rod.



61511100 for 9.6" holes

Kit: 20 Hole, Plastic Molded Btm w/Egg, chute, pad



16-37192 : Chute

16-37199 : Tie: Cable Outdoor 7-1/2"

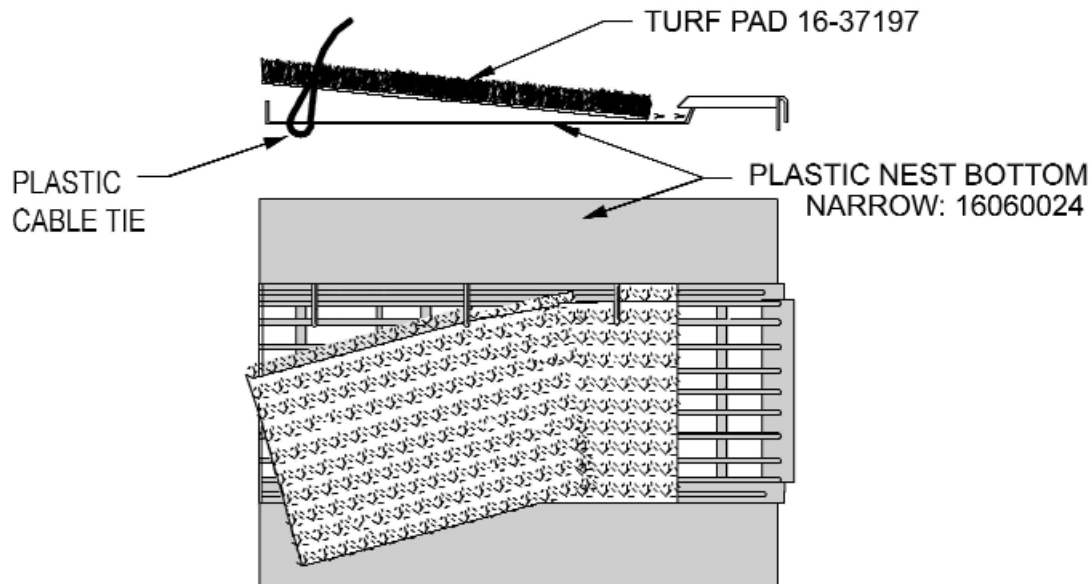
16-37184 : Molded Bottom

16-37187 : Decoy Egg

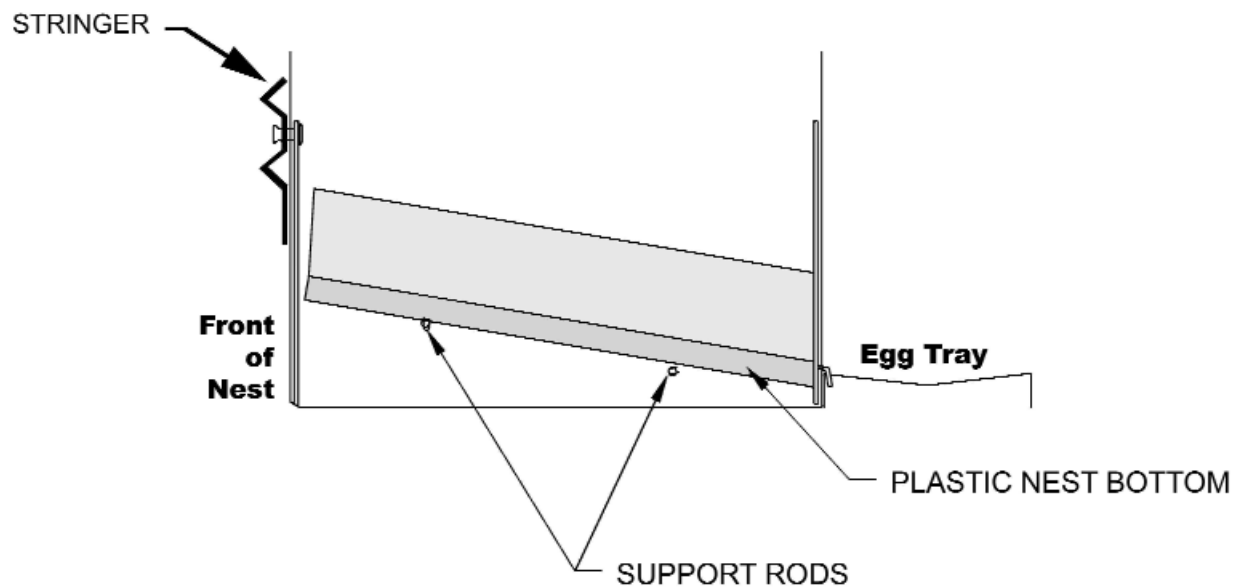
16-37186 : Finger Pad for Molded Bottom

ASSEMBLY OF TURF PAD TO NEST BOTTOM

1. Insert turf under three fingers on right side.
2. Insert turf under three fingers on left side.
3. Be sure turf lays flat in bottom.

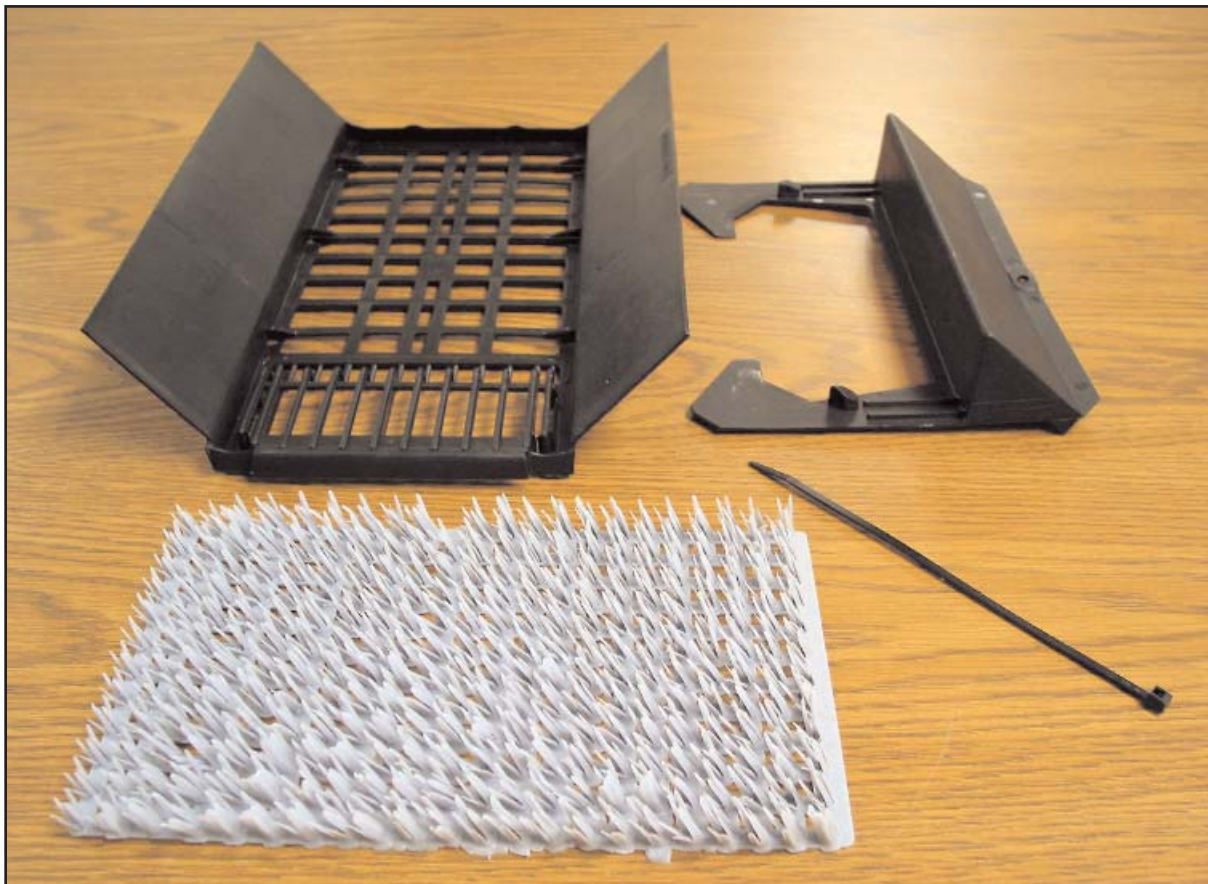


TURF SHOWN IN PLACE



61512301 for 9.6" holes

Kit: 20 Hole, Plastic btm w/grill, turf pad, front



16-37362 : Front

16060024 BOTTOM,PL NEST NARR OPEN BASE

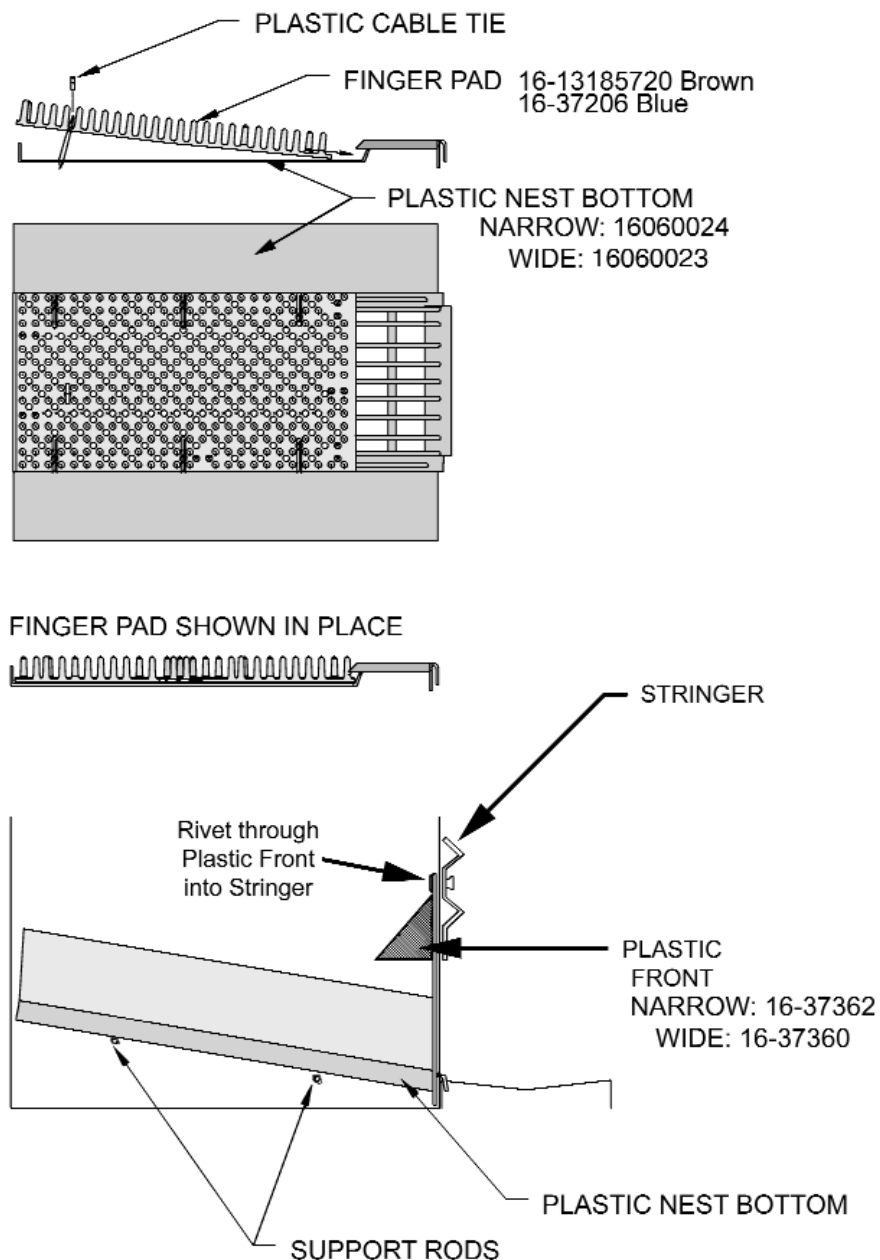
16-37197 : 5.63 x 9.63 Turf Pad

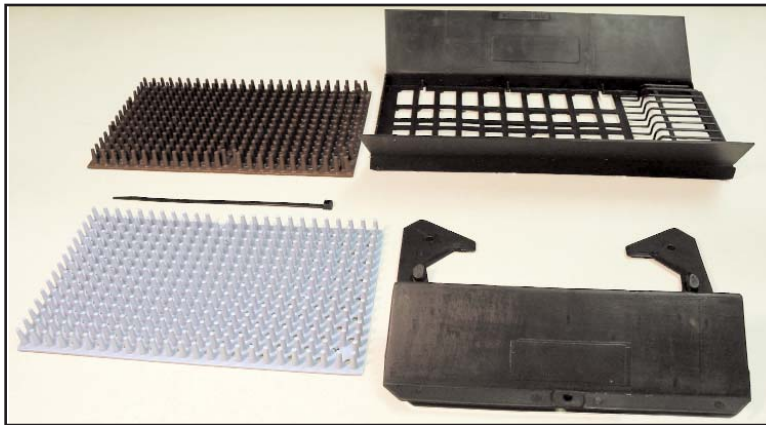
16-37199 : Tie: Cable Outdoor 7-1/2"

ASSEMBLY OF FINGER PAD TO NEST BOTTOM

1. Insert pad under (3) fingers on right-hand side.
2. Insert pad under (3) fingers on left-hand side.
3. Insert plastic cable tie up from the underside of the plastic nest bottom through small hole (matching on the nest finger pad) through the finger pad, back down through adjacent hole in the finger pad, through large hole in the plastic nest bottom. Secure the plastic cable tie.

Do not over-tighten tie or pad may buckle.

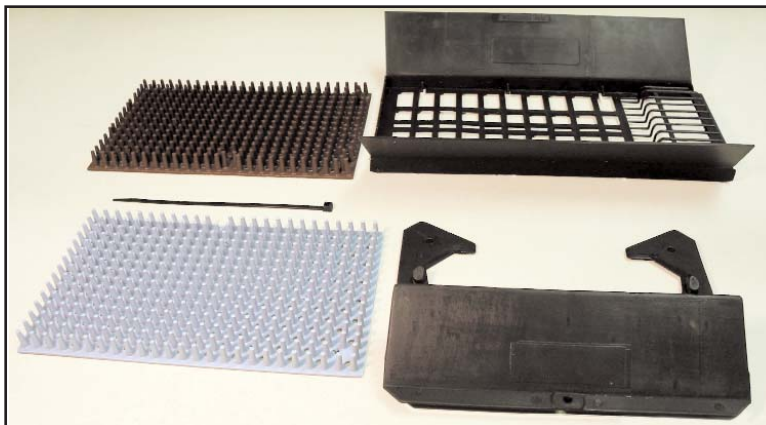




61512201 for 9.6" holes

**KIT, 20 HOLE: BROWN FINGER PAD
PLAST BTM w/GRILL, FRONT, TIE**

**16060024 : Bottom,PL Nest Narr Open Base
16-13185720 : 5.63 x 9.63 BROWN Finger Pad
16-37199 : Tie: Cable Outdoor 7-1/2"
16-37362 : Front**



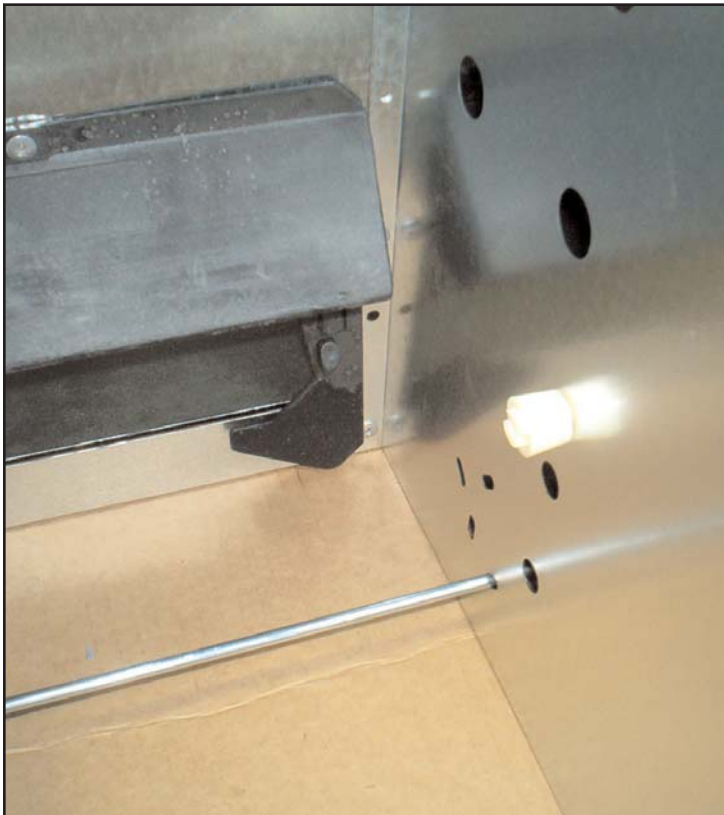
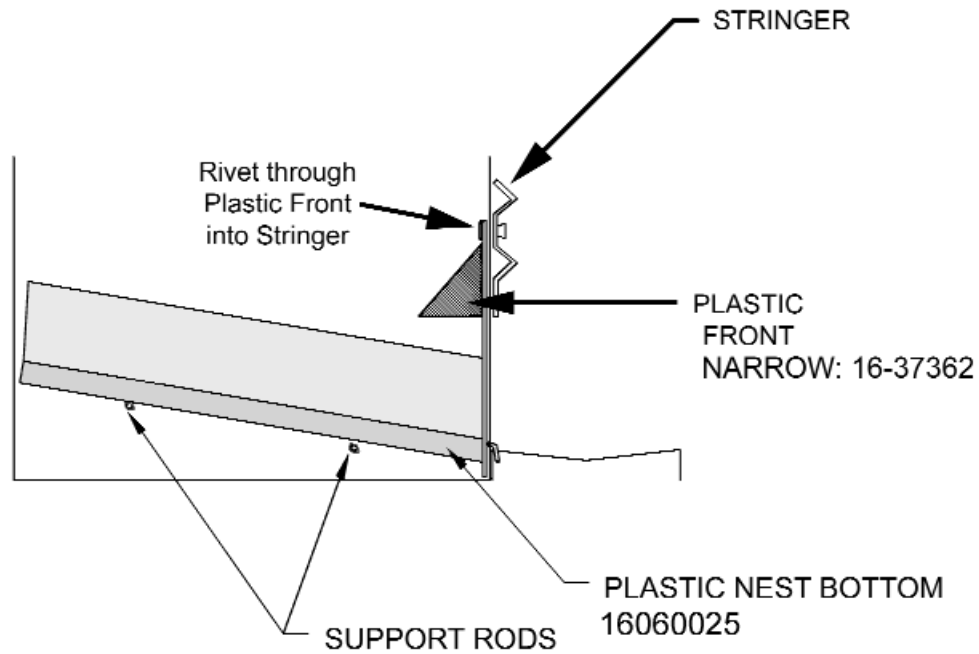
61512601 for 9.6" holes

**KIT, 20 HOLE: BLUE FINGER PAD
PLAST BTM w/GRILL, FRONT, TIE**

**16060024 : Bottom,PL Nest Narr Open Base
16-37206 : 5.63 x 9.63 BLUE Finger Pad
16-37199 : Tie: Cable Outdoor 7-1/2"
16-37362 : Front**

ASSEMBLY OF FULL TURF AND NEST BOTTOM

1. Insert Nest Bottom in Nest Hole as shown
2. Install basket retainers into the nest partitions as shown.
3. Insert pad on bottom and clipped under basket retainer to secure.



61513402 for 9.6" holes

Kit: 20 hole, plastic btm. less grill, full turf 12x13, front



**16-37193
16060025
16-37362
JD3922**

**PAD: NEST TURF GRAY 12
BTM,PL NEST NAR,NO GRID,O BASE
FRONT: NEST-SEGS-NARR
RETAINER,BASKET**

WARRANTY

Manufacturer warrants each new product manufactured by it to be free from defects in material or workmanship for one (1) year from and after the date of initial installation by or for the original purchaser. If such a defect is found by Manufacturer to exist within the one-year period, the Manufacturer will, at its option, (a) repair or replace such product free of charge, F.O.B. the factory of manufacture, or (b) refund to the original purchaser the original purchase price, in lieu of such repair or replacement. Labor costs associated with the replacement or repair of the product are not covered by the Manufacturer.

Conditions and Limitations

1. The product must be installed by and operated in accordance with the instructions published by the **Manufacturer or Warranty will be void.**
2. Warranty is void if **all components** of the system are not original equipment supplied by the Manufacturer.
3. This product must be purchased from and installed by an authorized distributor or installer or a certified representative thereof **or the Warranty will be void.**
4. Malfunctions or failure resulting from misuse, abuse, negligence, alteration, accident, or lack of proper maintenance, or from lightning strikes, electrical power surges or interruption of electricity, shall not be considered defects under the Warranty.
5. This Warranty applies only to systems for the care of poultry and livestock. Other applications in industry, commerce, or residential applications are not covered by this Warranty and are **strictly prohibited**. Any such use **will void the Warranty**.

Manufacturer shall not be liable for any **Consequential or Special Damage** which any purchaser may suffer or claim to suffer as a result of any defect in the product. **"Consequential"** or **"Special Damages"** *as used herein include, but are not limited to, lost or damaged products or goods, costs of transportation, lost sales, lost orders, lost income, increased overhead, labor and incidental costs and operational inefficiencies.*

THIS WARRANTY CONSTITUTES THE MANUFACTURER'S ENTIRE AND SOLE WARRANTY AND THIS MANUFACTURER EXPRESSLY DISCLAIMS ANY AND ALL OTHER WARRANTIES, INCLUDING, BUT NOT LIMITED TO, EXPRESS AND IMPLIED WARRANTIES AS TO MERCHANTABILITY, FITNESS FOR PARTICULAR PURPOSES SOLD AND DESCRIPTION OR QUALITY OF THE PRODUCT FURNISHED HEREUNDER.

Distributors are not authorized to modify or extend the terms and conditions of this Warranty in any manner or to offer or grant any other warranties for the products in addition to those terms expressly stated above. An officer of the Manufacturer must authorize any exceptions to this Warranty in writing. Manufacturer reserves the right to change models and specifications at any time without notice or obligation to improve previous models.

Effective 01/07

NOTES

NOTES

This image shows a full page of blank white paper with horizontal ruling lines. The lines are evenly spaced and run across the width of the page, typical of notebook or legal stationery. There are no margins, text, or other markings present.

