



# Proximity Switch Wiring Bulletin

Installations using a Proximity Boot Switch (part numbers 34779/34779SS, or 34780/34780SS) instead of a mechanical Boot Switch (part numbers 30944 or 30945) must be wired according to the wiring diagram provided.

**The Proximity Switch requires a constant 230 volt power supply between the black and white wires.**

**Warning: Make sure ALL power sources supplying your system are disconnected at the circuit breakers before performing any service work.**

## Setting the Delay

The Proximity Switch includes an adjustable delay. The delay may be set from 1 second to 10 minutes.

Use the small screwdriver provided to turn the Delay Adjustment. Turn the screw counterclockwise until the light stays on. Turn the adjustment screw clockwise one complete revolution. This sets the delay to 1 second.

To increase the delay, turn the adjustment screw clockwise.

Quick flashes = shorter time delay. Slow flashes = longer time delay.

## Adjusting the Sensitivity

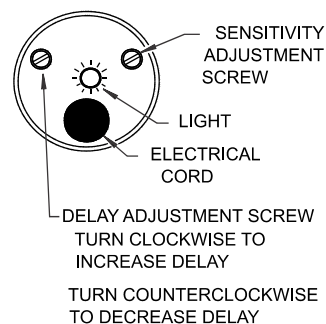
The Proximity Switch includes a Sensitivity Adjustment Screw. It may be set to sense feed 0 to 15 mm from end of switch.

**The switch is set to the recommended sensitivity for most feed types.**

If sensitivity does need to be adjusted, remove the sealing caulk to allow access to the Sensitivity Adjustment Screw.

Note the screw orientation before turning the Sensitivity Adjustment Screw. Fine tune the switch sensitivity by making 1/4 turns or less to the Sensitivity Adjustment Screw.

PROXIMITY SWITCH (END VIEW)

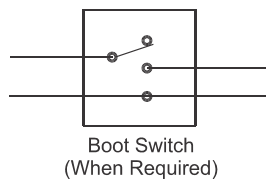


MA1060-004 8/19

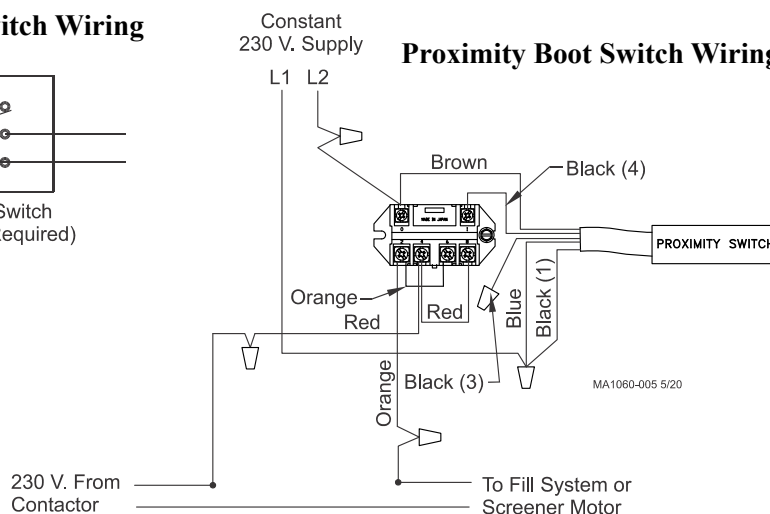
## IMPORTANT:

The wiring diagram decal (on the Switch) represents the switch in the non-powered condition. When power is applied the N.O. and N.C. contacts reverse. Refer to the wiring diagram in this instruction when wiring the Proximity Switch.

## Mechanical Boot Switch Wiring



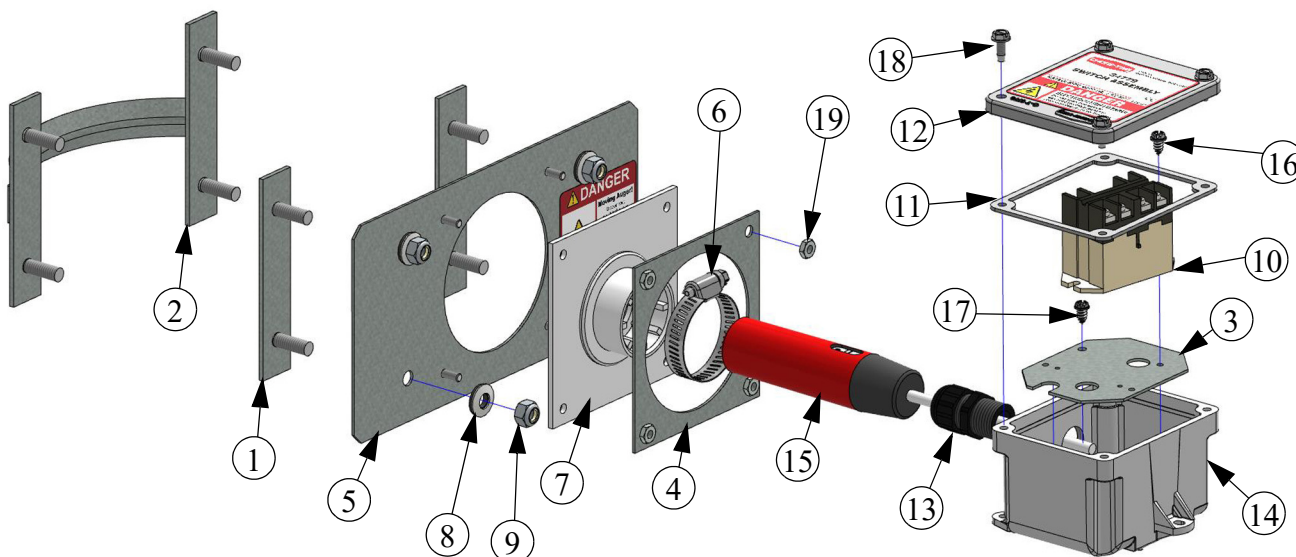
## Proximity Boot Switch Wiring



**For additional parts and information, contact your nearest Chore-Time distributor or representative.  
Find your nearest distributor at: [www.choretime.com/contacts](http://www.choretime.com/contacts)**

CTB, Inc.  
PO Box 2000  
Milford, Indiana 46542-2000 USA  
Phone (574) 658-4101 Fax (877) 730-8825  
Email: [choretime@choretime.com](mailto:choretime@choretime.com)  
Internet: [www.choretime.com](http://www.choretime.com)

# Part Numbers



		<b>34779 Flag &amp; Twin Boot Prox. Switch</b>	<b>34779SS Stainless Steel Flag &amp; Twin Boot Prox. Switch</b>	<b>34780 Single Boot Prox. Switch</b>	<b>34780SS Stainless Steel Single Boot Prox. Switch</b>
<b>Item</b>	<b>Description</b>	<b>Part Number</b>			
1	Retainer Bracket	30942	30942SS	--	--
2	Retainer Bracket w/Handle	--	--	30943	30943SS
3	Box Plate	24321	24321	24321	24321
4	Window Plate	7842	7842SS	7842	7842SS
5	Switch Cover Plate	30941	30941SS	30941	30941SS
6	Adjustable Clamp	3527	3527	3527	3527
7	Proximity Plate Weldment	34758	34758	34758	34758
8	5/16 Weather Seal Washer	39-20155	56308	39-20155	56308
9	5/16-18 Lock Nut	2148	8938	2148	8938
10	230 V. Relay	34654	34654	34654	34654
11	Switch Box Gasket	6777	6777	6777	6777
12	Switch Box Cover	6776	6776	6776	6776
13	1/2" Liquid Tight Connector	23779	23779	23779	23779
14	Switch Box	24702	24702	24702	24702
15	Proximity Switch	34255	34255	34255	34255
16	#8 x .375 Screw	13019	13019	13019	13019
17	6-20 x .375 Screw	6782	6782	6782	6782
18	#10 x .5 Screw	28075	28075	28075	28075
19	10-32 Hex Nut	4297	35681	4297	35681

## Revisions to this Manual

<b>Page No.</b>	<b>Description of Change</b>
2	Changed 2146 to 2148, 2146SS to 8938, 34733 to 34654

**ECO**  
34835