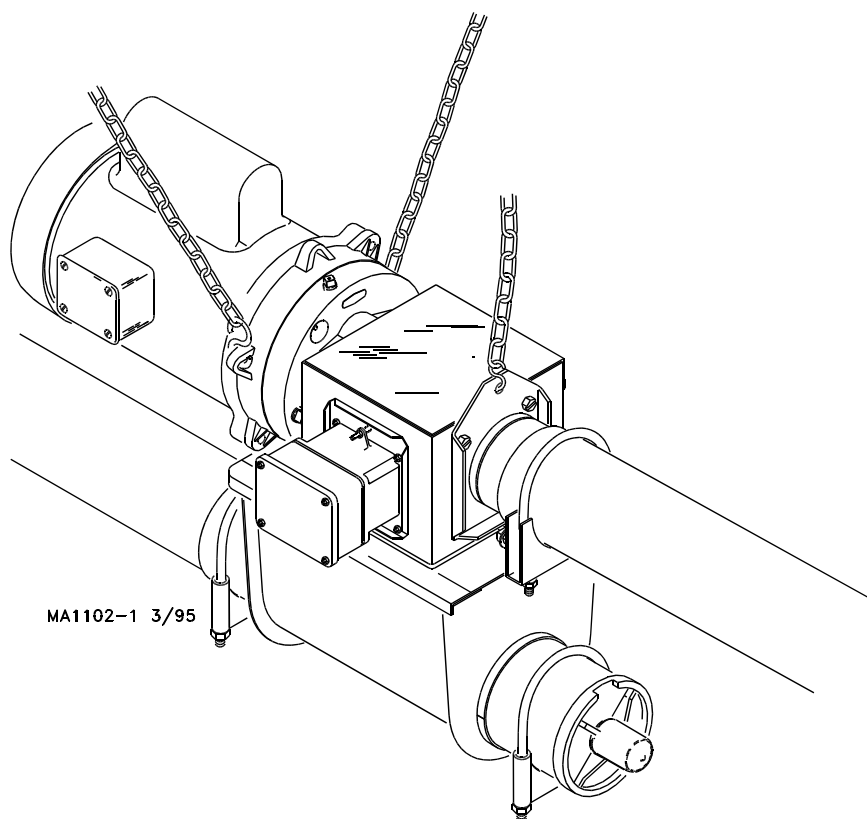


Extension Boot System Installation Instruction

for

Model 108 FLEX-AUGER® Feed Delivery Systems



For additional parts and information, contact your nearest Chore-Time distributor or representative.
Find your nearest distributor at: www.choretime.com/contacts

CTB, Inc.

PO Box 2000

Milford, Indiana 46542-2000 USA

Phone (574) 658-4101 Fax (877) 730-8825

Email: choretime@choretime.com

Internet: www.choretime.com

Contents

Topic	Page
Limited Warranty	3
Safety and General Information	4
Follow Safety Instructions	4
Decal Descriptions	4
DANGER: Moving Auger	4
DANGER: Electrical Hazard	4
DANGER: Springing Auger	4
General Information	5
Installation	6
Planning the Model 108 FLEX-AUGER Extended Length Feed Delivery System	6
Model 108 Extension Boot Installation	7
Wiring	8
Extension System Wiring	8
Extension System Wiring	9
Extension System Wiring	10
Extension System Wiring	11
Parts Listing	12
Extension Boot Kit 47862-1 (1 Phase), & 47862-3 (3 Phase)	12

Limited Warranty

LIMITED WARRANTY

Chore-Time Group, a division of CTB, Inc. ("Chore-Time") warrants new CHORE-TIME CHORE-TIME FLEX-AUGER System Parts and Components manufactured by Chore-Time to be free from defects in material or workmanship under normal usage and conditions, for One (1) year from the date of installation by the original purchaser ("Warranty"). Chore-Time provides for an extension of the aforementioned Warranty period ("Extended Warranty Period") with respect to certain Product parts. If such a defect is determined by Chore-Time to exist within the applicable period, Chore-Time will, at its option, (a) repair the Product or Component Part free of charge, F.O.B. the factory of manufacture or (b) replace the Product or Component Part free of charge, F.O.B. the factory of manufacture. This Warranty is not transferable, and applies only to the original purchaser of the Product.

CONDITIONS AND LIMITATIONS

THIS WARRANTY CONSTITUTES CHORE-TIME'S ENTIRE AND SOLE WARRANTY AND CHORE-TIME EXPRESSLY DISCLAIMS ANY AND ALL OTHER WARRANTIES, INCLUDING, BUT NOT LIMITED TO, EXPRESS AND IMPLIED WARRANTIES, INCLUDING, WITHOUT LIMITATION, WARRANTIES AS TO MERCHANTABILITY OR FITNESS FOR PARTICULAR PURPOSES. CHORE-TIME shall not be liable for any direct, indirect, incidental, consequential or special damages which any purchaser may suffer or claim to suffer as a result of any defect in the Product. Consequential or Special Damages as used herein include, but are not limited to, lost or damaged products or goods, costs of transportation, lost sales, lost orders, lost income, increased overhead, labor and incidental costs, and operational inefficiencies. *Some jurisdictions prohibit limitations on implied warranties and/or the exclusion or limitation of such damages, so these limitations and exclusions may not apply to you. This warranty gives the original purchaser specific legal rights. You may also have other rights based upon your specific jurisdiction.*

Compliance with federal, state and local rules which apply to the location, installation and use of the Product are the responsibility of the original purchaser, and CHORE-TIME shall not be liable for any damages which may result from non-compliance with such rules.

The following circumstances shall render this Warranty void:

- Modifications made to the Product not specifically delineated in the Product manual.
- Product not installed and/or operated in accordance with the instructions published by the CHORE-TIME.
- All components of the Product are not original equipment supplied by CHORE-TIME.
- Product was not purchased from and/or installed by a CHORE-TIME authorized distributor or certified representative.
- Product experienced malfunction or failure resulting from misuse, abuse, mismanagement, negligence, alteration, accident, or lack of proper maintenance, or from lightning strikes, electrical power surges or interruption of electricity.
- Product experienced corrosion, material deterioration and/or equipment malfunction caused by or consistent with the application of chemicals, minerals, sediments or other foreign elements.
- Product was used for any purpose other than for the care of poultry and livestock.
-

The Warranty and Extended Warranty may only be modified in writing by an officer of CHORE-TIME. CHORE-TIME shall have no obligation or responsibility for any representations or warranties made by or on behalf of any distributor, dealer, agent or certified representative.

Effective: April 2014

Safety and General Information

Caution, Warning and Danger Decals have been placed on the equipment to warn of potentially dangerous situations. Care should be taken to keep this information intact and easy to read at all times. Replace missing or damaged safety decals immediately.

Safety–Alert Symbol



This is a safety–alert symbol. When you see this symbol on your equipment, be alert to the potential for personal injury. This equipment is designed to be installed and operated as safely as possible...however, hazards do exist.

Understanding Signal Words

Signal words are used in conjunction with the safety–alert symbol to identify the severity of the warning.



DANGER indicates an imminently hazardous situation which, if not avoided, **WILL** result in death or serious injury.



WARNING indicates a potentially hazardous situation which, if not avoided, **COULD** result in death or serious injury.



CAUTION indicates a hazardous situation which, if not avoided, **MAY** result in minor or moderate injury.

Follow Safety Instructions

Carefully read all safety messages in this manual and on your equipment safety signs. Follow recommended precautions and safe operating practices.

Keep safety signs in good condition. Replace missing or damaged safety signs.

Decal Descriptions

DANGER: Moving Auger

This decal is placed on the End Cap Weldment and Clean-out cover. Severe personal injury will result, if the electrical power is not disconnected, prior to servicing the equipment.



DANGER: Electrical Hazard

Disconnect electrical power before inspecting or servicing equipment unless maintenance instructions specifically state otherwise.

Ground all electrical equipment for safety.

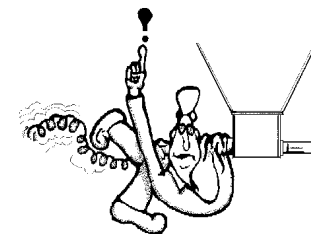
All electrical wiring must be done by a qualified electrician in accordance with local and national electric codes.

Ground all non-current carrying metal parts to guard against electrical shock.

Electrical disconnects and over current protection are not supplied with the equipment.

DANGER: Springing Auger

Use caution when working with Auger. Springing Auger may cause personal injury.



Attention: Read the Manual

See the manual for detailed installation instructions.



General Information

The CHORE-TIME Extension Boot is designed to convey livestock feed types. Using this equipment for any other purpose or in a way not within the operating recommendations specified in this manual will void the warranty and may cause personal injury and/or death.

This manual is designed to provide comprehensive planning, installation, wiring, and parts listing information. The Table of Contents provides a convenient overview of the information in this manual. The Table of Contents also specifies which pages contain information for the sales personal, installer, and consumer (end user).

IMPORTANT: CE stands for certified Europe. It is a standard which equipment must meet or exceed in order to be sold in Europe. CE provides a benchmark for safety and manufacturing issues. CE is required only on equipment sold in Europe.



CHORE-TIME Equipment recognizes CE Mark and pursues compliance in all applicable products. Any alterations to the products will violate the CE compliance, will void the warranty, and may cause personal injury and/or death.

Please include the names and address of your CHORE-TIME Distributor.

Please fill in the following information about your Chore-Time Extension Boot System. Keep this manual in a clean, dry place for future reference.

Distributor's Name _____

Distributor's Address _____

Distributor's Phone _____ **Date of Purchase** _____

Installer's Name _____

Installer's Address _____

Installer's Phone _____ **Date of Installation** _____

System Specifications _____

Feed Delivery System Supplying

Installation

Planning the Model 108 FLEX-AUGER Extended Length Feed Delivery System

Carefully plan the Model 108 Fill System installation. Make sure the system will not interfere with other equipment, doors, windows, etc.

The charts below provide power unit recommendations and maximum system line lengths. Notice that the top chart applies to standard 348 RPM systems.

The lower chart applies to (optional) High Capacity 425 RPM systems.

Maximum Line Lengths* for standard 348 RPM Systems			
Motor HP	Power Unit Part No.	Standard System	Extended System
3/4	3259-52	50 Ft. (15.2 m)	75 Ft. (22.8 m)
1	3259-49	100 Ft. (30.5 m)	135 Ft. (41.1 m)
1-1/2	3259-66	150 Ft. (45.7 m)	185 Ft. (56.4 m)

Maximum Line Lengths* for High Capacity 425 RPM Systems			
Motor HP	Power Unit Part No.	Standard System	Extended System
1	3259-79	50 Ft. (15.2 m)	75 Ft. (22.8 m)
1-1/2	3259-80	100 Ft. (30.5 m)	135 Ft. (41.1 m)
2	3259-121	150 Ft. (45.7 m)	185 Ft. (56.4 m)

*Maximum line lengths should be reduced for elevations over 8' (2.4 m) and/or inclines steeper than 45 degrees.

Maximum lengths for 108 systems include use of two PVC elbows. If additional elbows are used, decrease line length by 30 ft. (9 m) per elbow. Length of extension systems do not include elbows. Decrease maximum extension system lengths by 30 ft. (9 m) per elbow if used in the system.

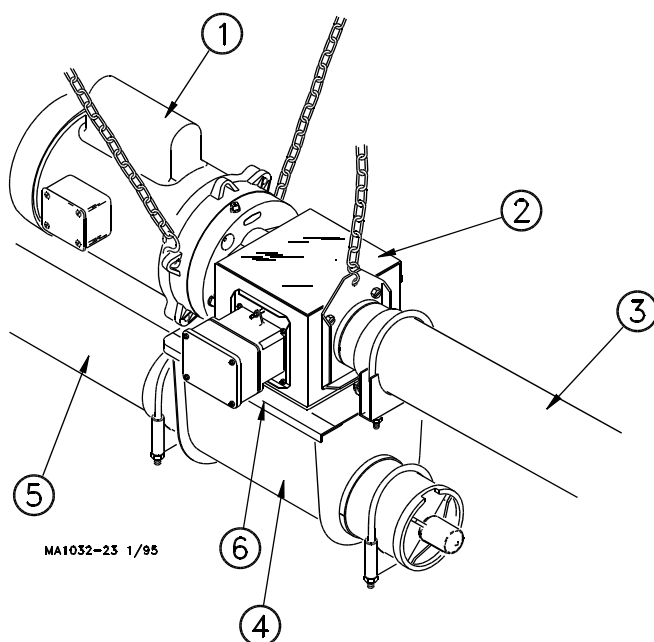
Horsepower requirements are based on length of the Model 108 FLEX-AUGER system and type of system installed--i.e. number of turns.

Model 108 Extension Boot Installation

The Model 108 Extension Kit is used to increase total length of the Model 108 FLEX-AUGER system, or to turn 90 degrees, in applications where this is required.

Maximum lengths for the standard and extended length systems are shown on page 5 of this manual. **DO NOT EXCEED THESE RECOMMENDATIONS.**

1. Install the Control Unit at the end of the standard system as described in the Control Unit installation section of this manual.
2. Remove the plastic drop from the bottom of the control unit housing. Re-use the hardware to install the 7856 Adapter Plate to the control unit housing. See Figure 1.
3. Install the Extension Boot on the bottom of the adapter plate, using the hardware provided with the adapter plate. Note that the Extension Boot can be installed to extend the system in a straight line or used to make a 90 degree turn in installations where that is desirable.
4. Install the extended length portion of the system similar to the standard system.
5. Wire the extended length system according to the applicable wiring diagrams in this manual.



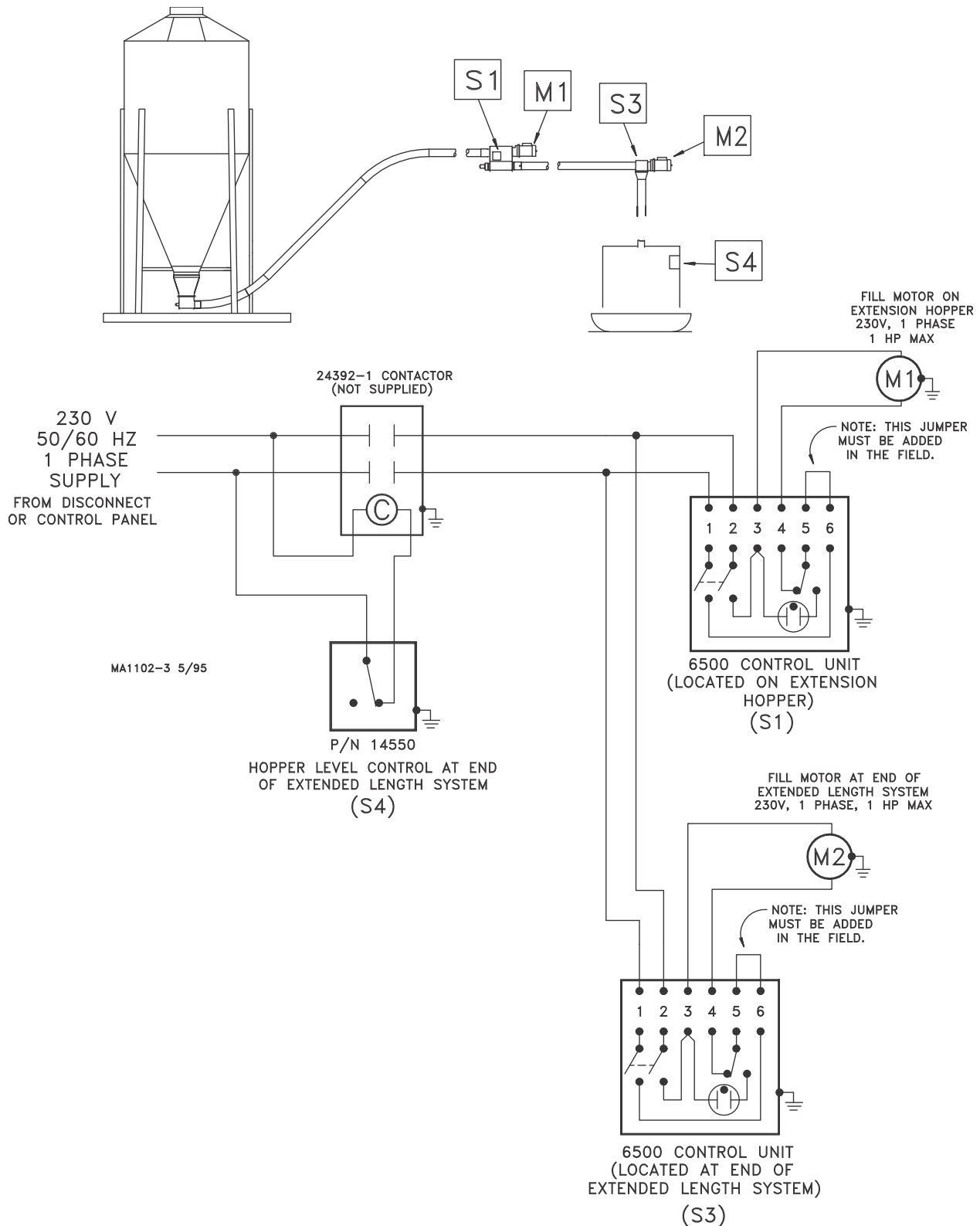
Key	Description
1	Power Unit
2	Control Unit
3	Incoming Auger Tube
4	Extension Boot (Model 108)
5	Outgoing Auger Tube
6	Adapter Plate

Figure 1. Model 108 Extension Boot Installation

Wiring

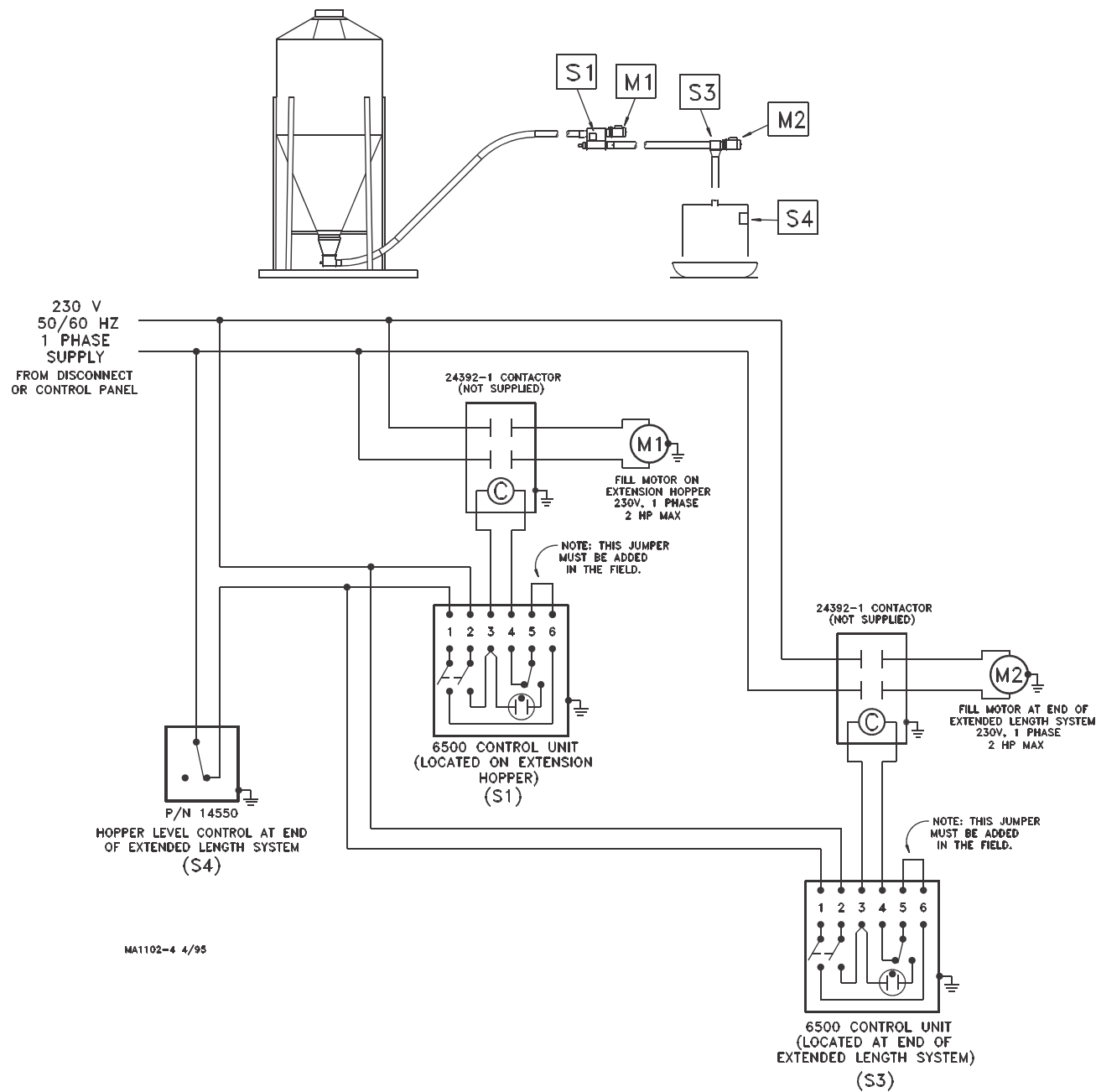
Extension System Wiring

(Single Phase, 230 V, 50/60Hz, w/o Motor Starters) (1 H.P. or less motor horsepower)



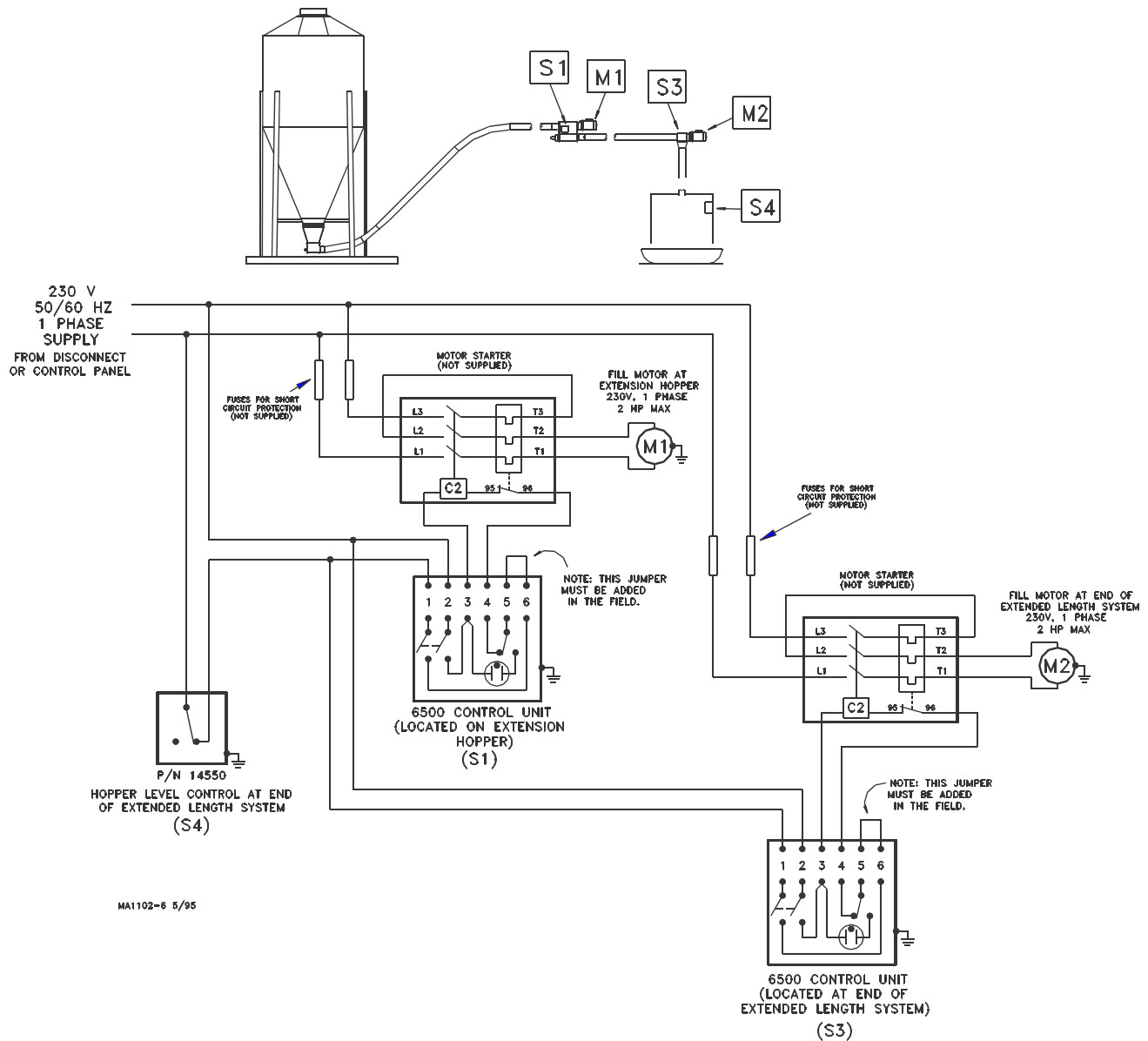
Extension System Wiring

(Single Phase, 230 V, 50/ 60Hz, w/o Motor Starters) (1-1/2 H.P. or larger motor horsepower)



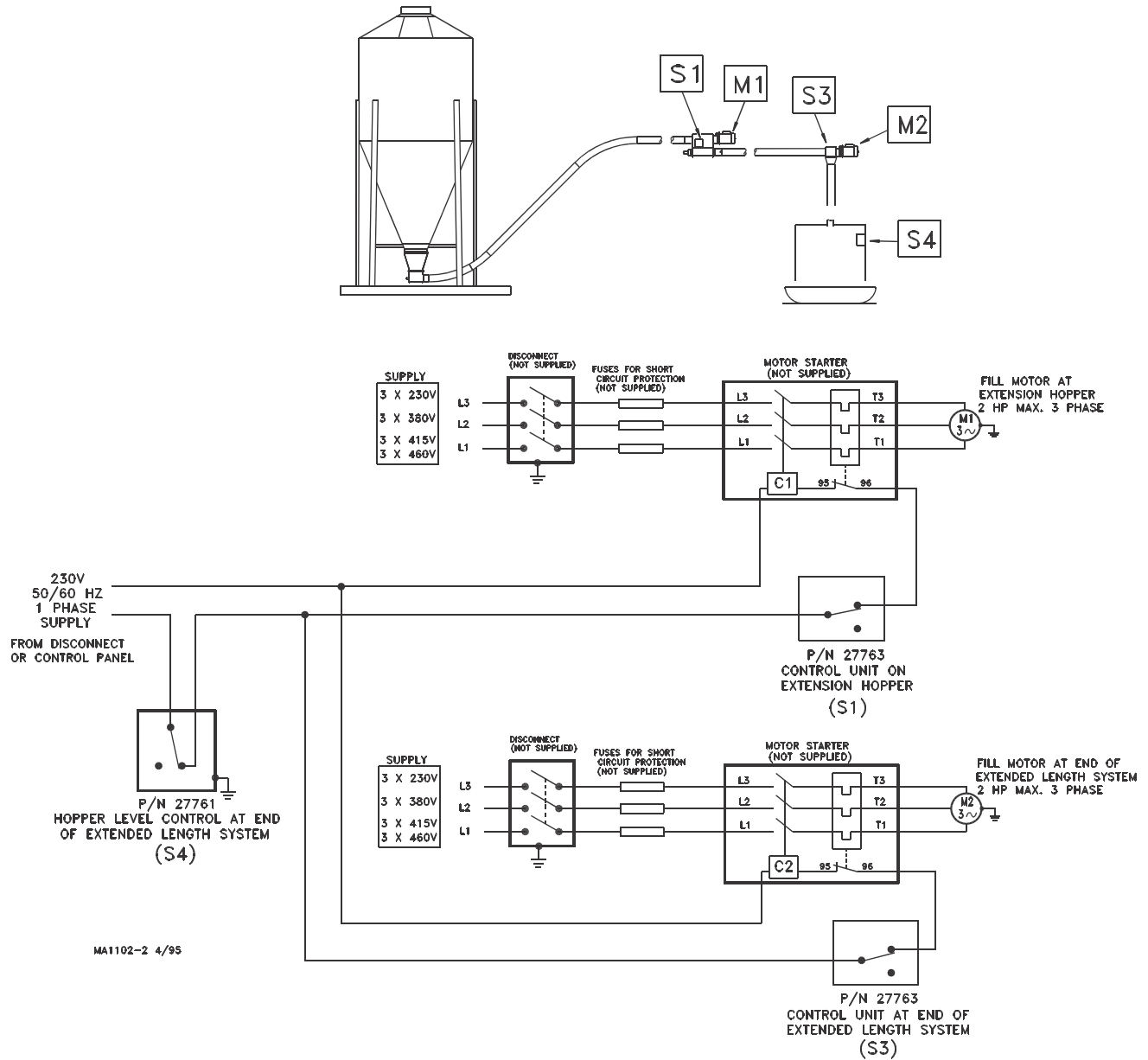
Extension System Wiring

(Single Phase, 230 V, 50/60Hz, w/ Motor Starters)



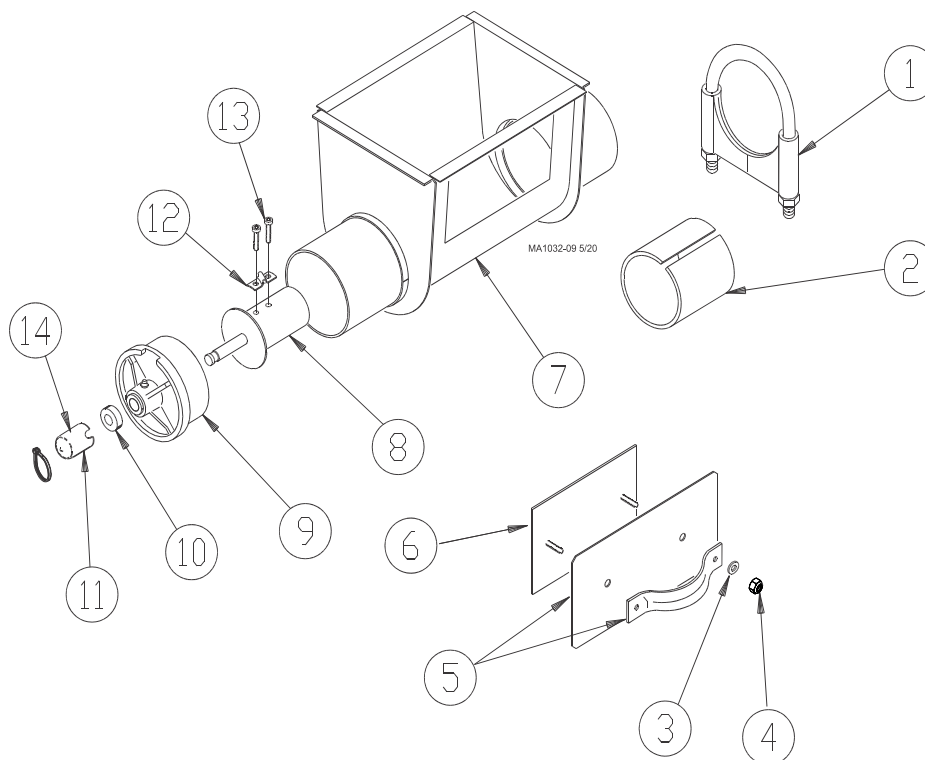
Extension System Wiring

(3-Phase, 220/380/415/460 V, 50/60Hz, w/ Motor Starters)



Parts Listing

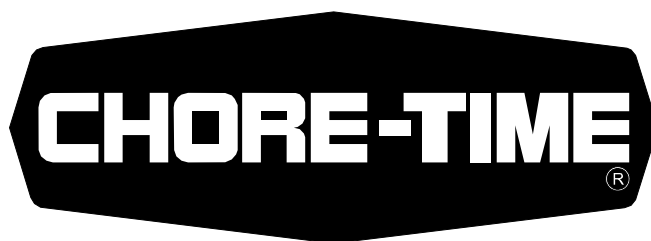
Extension Boot Kit 47862-1 (1 Phase), & 47862-3 (3 Phase)



<u>KEY</u>	<u>DESCRIPTION</u>	<u>PART NO.</u>	<u>KEY</u>	<u>DESCRIPTION</u>	<u>PART NO.</u>
1	Tube Clamp	34338	9	Bearing Cap Assembly	30314
2	Tube Insert	34337	10	5/8" Set Collar	1386
3*	Sealing Washer	39-20155	11	Safety Cap	29702
4*	5/16-18 Nut	2148	12	Anchor Clamp	7703
5*	Cover Weldment	6301	13	5/16-18 x 7/8" Socket Hd Cap Screw	6850-1
6*	Back Plate Assembly	6298	14	Single Wire Hose Clamp	56705
7	Boot Body Weldment	30386	--	Adapter Plate Assembly	7856
8	Anchor Weldment	34369	--	Direct Drive Control Unit for 34633-1	6500-22
*Indicates components of 6197 Clean-Out Cover Assembly			--	Direct Drive Control Unit for 34633-3	25770-6

Note: The Extension Boot components (less the Control Unit) may be ordered as an assembly under Chore-Time Part No. 34372.

This page left blank intentionally.....



**MADE TO WORK.
BUILT TO LAST.®**

Revisions to this Manual

Page No.	Description of Change	ECO
Various	Updated to CE standards.	34835
12	Changed 34633-1 to 47862-1, 34633-3 to 47862-3, 8491 to 39-20155, 2146 to 2148, 29703 to 29702, Added: 56705	
Various	Reformatted to Book form.	

**For additional parts and information, contact your nearest Chore-Time distributor or representative.
Find your nearest distributor at: www.choretime.com/contacts**

CTB, Inc.
PO Box 2000
Milford, Indiana 46542-2000 USA
Phone (574) 658-4101 Fax (877) 730-8825
Email: choretime@choretime.com
Internet: www.choretime.com