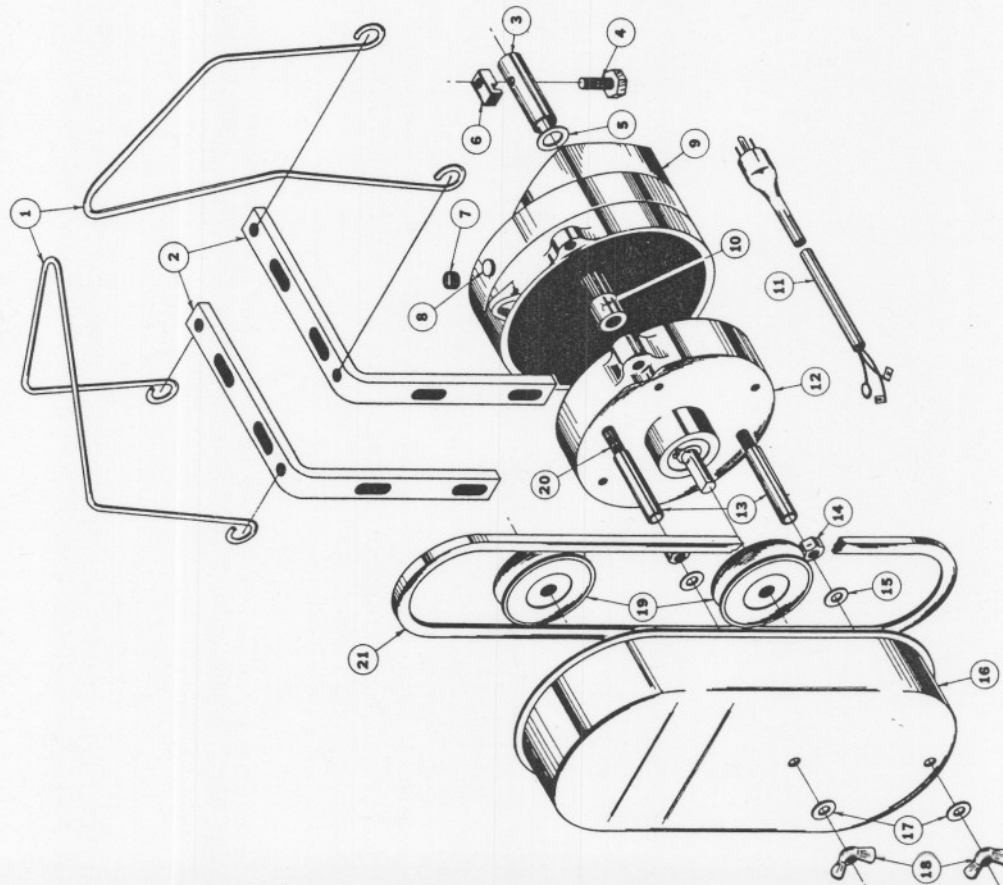


4281 & 3642 International Power Units



Note: Install vented plug in gearhead before operating unit.

Maintain oil level in gearhead with SAE 40 W oil.

FLEX-AUGER Power Units

3642 International Power Unit

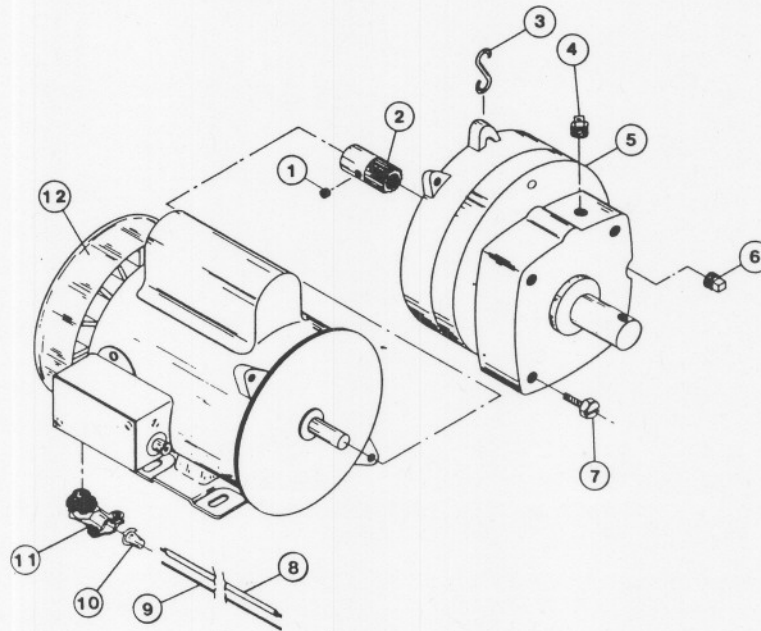
Key	Description	Part No.
1	Hanger	4251
2	Motor Support Arm	4252
3	Drive Tube	1048
4	1/4-20 x 1-1/4" Bolt	X-1981
5	Washer	X-1484
6	Drive Block	1963
7	Vented Pipe Plug	3523
8	Plastic Pipe Plug	3516
9	Gearhead Ass'y.	3261-1
10	Pinion Gear Ass'y.	3249
11	Cord Ass'y.	1908
12	Back Plate Bearing Ass'y.	4253
13	Bushing	2474-4
14	1/4-20 Lock Nut	X-1269
15	Washer	X-3239
16	Belt Guard	3645
17	Washer	X-3239
18	Wing Nut	X-1630
19	Pulley	2748
20	1/4-20 x 4" Bolt	X-2754
21	V-Belt	2749

~~4281~~ International Power Unit same as above, except Cord Assembly (key no. 11) is part number 4167.

The ~~4733~~ Parts Kit components, included with the power units, are required when the ~~4430~~ auger is used with a power unit. Kit contains 2920 Drive Tube, 4642 Drive Block and X-2919 Bolt, 1/4-20 x 1-1/2".

FLEX-AUGER Power Units

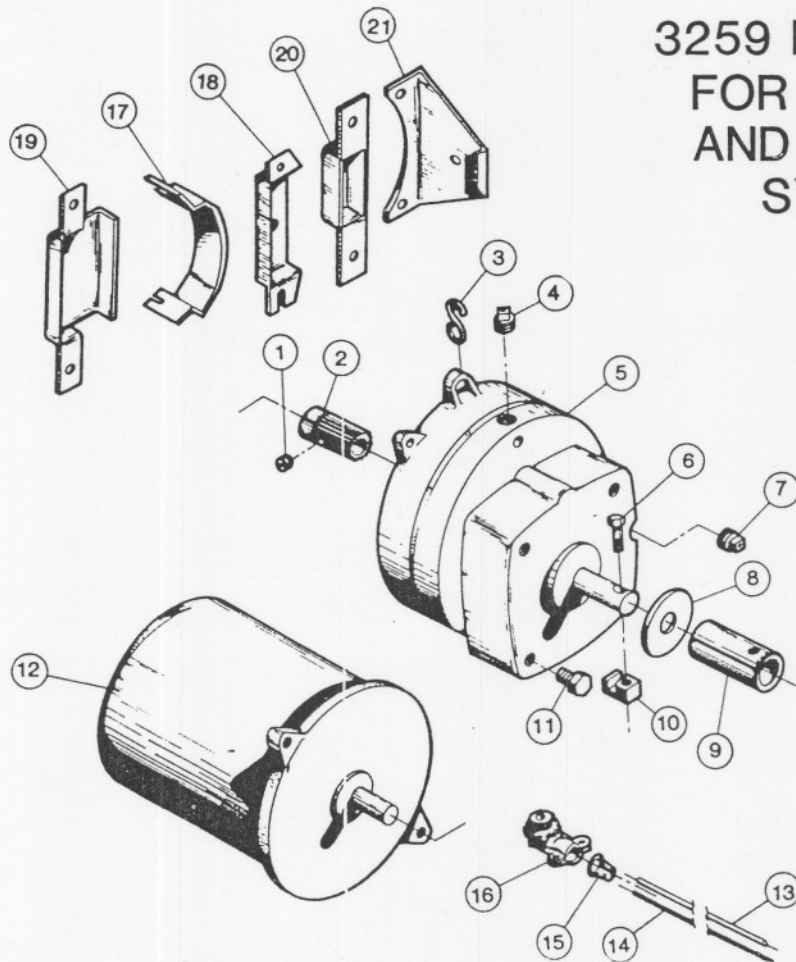
3259-0 POWER UNITS



Key	Description	Part No.
1	Setscrew for 3249 Pinion	5929
	for 5046 Pinion	5362
	for 6104 Pinion	5929
2	Pinion Assembly 1/2 HP, 216, 219 RPM	3249
	1/2, 3/4 HP, 348 RPM	5046
	1, 1-1/2 HP, ALL RPM	6104
3	"S" Hook	4270
4	Vent Plug	3523
5	Gearhead Assembly 129 RPM (7/8" shaft)	3261-8
	216 RPM (7/8" shaft)	3261-6
	348 RPM (7/8" shaft)	3261-7
	348 RPM (5/8" shaft)	3261-5
6	Pipe Plug	2755
7	5/16-18x5/8 Hex Hd M.S.	4412-1
8	Hook-up Wire, 16 AWG (orange)	2243-134
9	Ground Wire, 16 AWG (bare wire)	2243-178
10	Anti-Short Bushing	6304
11	90° Connector	4228
12	Motor 1/2 HP, 230 V, 60 Hz	5050
	3/4 HP, 230 V, 60 Hz	5051
	3/4 HP, 230 V, 50 Hz	6305
	1 HP, 230 V, 60 Hz	6857
	1-1/2 HP, 230 V, 60 Hz	8782
	Complete 1/2 HP, 129 RPM Power Unit	3259-67
	Complete 1/2 HP, 216 RPM Power Unit	3259-50
	Complete 1/2 HP, 348 RPM Power Unit	3259-51
	Complete 3/4 HP, 348 RPM Power Unit	3259-52
	Complete 3/4 HP, 285 RPM Power Unit	3259-53
	Complete 1 HP, 348 RPM Power Unit	3259-49
	Complete 1 1/2 HP, 348 RPM Power Unit	3259-66

FLEX-AUGER Power Units

3259 POWER UNIT FOR MODEL 50 AND MODEL 55 SYSTEMS

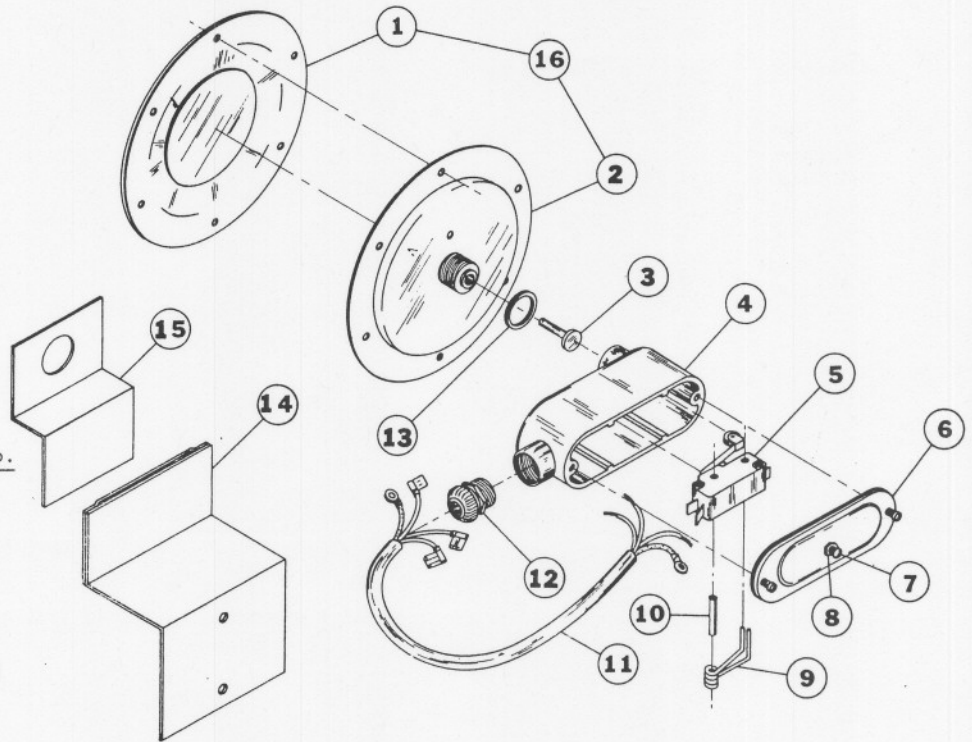


Complete 1/3 hp., 230 v., 60 Hz., 348 RPM Power Unit: Part No. 3259-34
 Complete 1/2 hp., 230 v., 60 Hz., 348 RPM Power Unit: Part No. 3259-39

Key	Description	Part No.
1	1/4-28x1/4 Setscrew	5362
2	Pinion Assembly, 21 teeth	5046
3	"S" Hook	4270
4	Vent Plug	3523
5	Gearhead Assembly, 348 RPM	3261-5
6	1/4-20x1/2 Hx. Hd. M. Screw	2919
7	Pipe Plug	2755
8	Flat Washer	1484
9	Drive Tube	1048
10	Drive Block	4642
11	5/16-18x5/8 Hx. Hd. M. Screw	4412-1
12	Motor, 1/3 hp., 230 v., 60 Hz.	4229
	Motor, 1/2 hp., 230 v., 60 Hz.	5703
13	Hook-Up Wire, 16 AWG (2 used)	2243-134
14	Bare Ground Wire, 16 AWG	2243-17E
15	Anti-Short Bushing	6304
16	90° Connector	4228
17	Motor Shield, 1/2 hp., G.E.	6772
18	Motor Shield, 1/3 & 1/2 hp., Doerr	4266
19	Motor Shield, 1/3 hp., G.E.	6825
20	Motor Shield, 1/3 hp., Emerson	6826
21	Motor Shield, 1/2 hp., G.E.	5711

FLEX-AUGER Switches

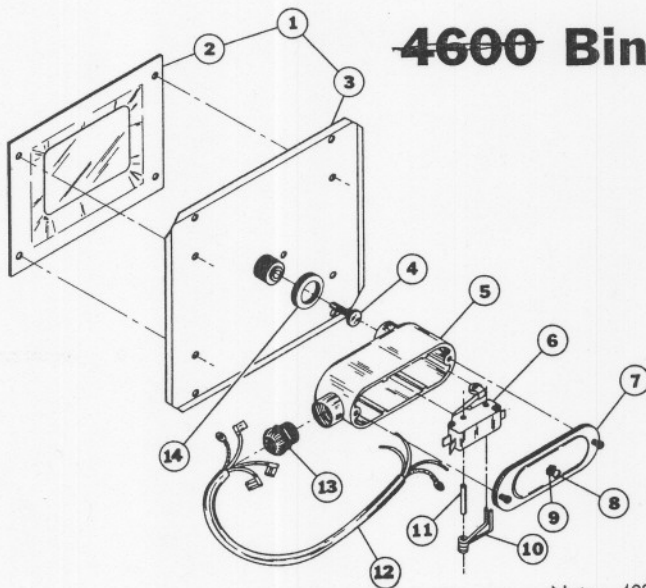
4330 HOPPER LEVEL CONTROL PARTS LIST



Key	Description	Part No.
1	Diaphragm	4591
2	Diaphragm Plate	4584
3	Plunger	4595
4	Switch Housing	4586
5	Switch	4604
6	Cover	4609
7	10-32 x 1" Screw	4418-1
8	10-32 Hex Nut	4297
9	Spring	4976
10	Spring Pin	4589
11	Cord	4737
12	Connector	4598
13	Seal	4910
14	Support Bracket	2911
15	Mount Bracket	4594
16	Diaphragm Plate Ass'y.	4935

Note: 4933-1 Switch Ass'y. consists of parts 4,5,6,7,8,9,10, 11 & 12

4600 Bin Level Switch

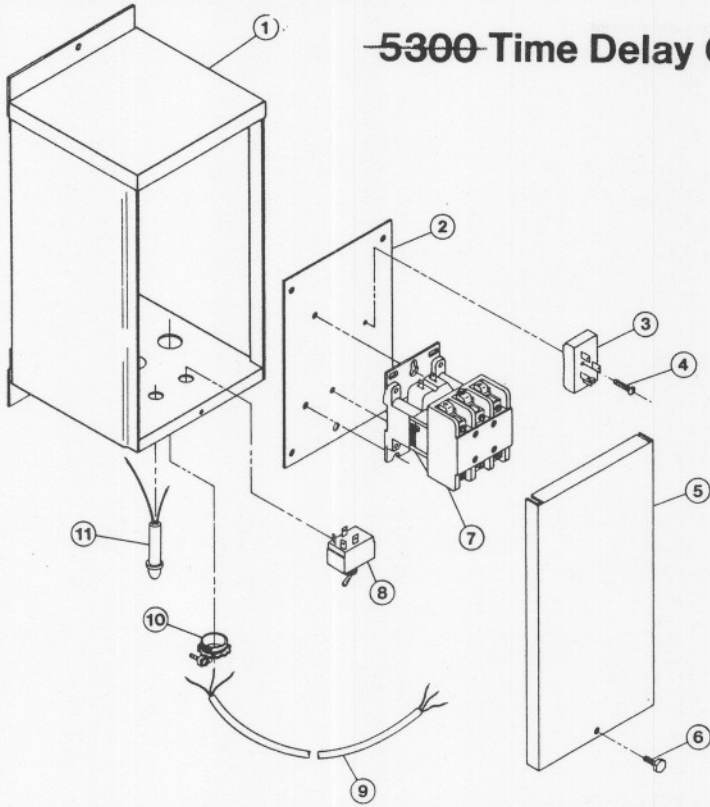


Key	Description	Part No.
1	Diaphragm Plate Ass'y.	4934
2	Diaphragm	4289
3	Switch Plate	4603
4	Plunger	4595
5	Switch Housing	4586
6	Switch	4604
7	Cover	4609
8	10-32 x 1" Screw	X-4418-1
9	10-32 Hex Nut	X-4297
10	Spring	4976
11	Spring Pin	X-4589
12	Cord	4737
13	Connector	4598
14	Seal	4910

Note: 4933-1 Switch Ass'y. consists of parts 5,6,7,8,9,10,11,12 & 13.

FLEX-AUGER Switches

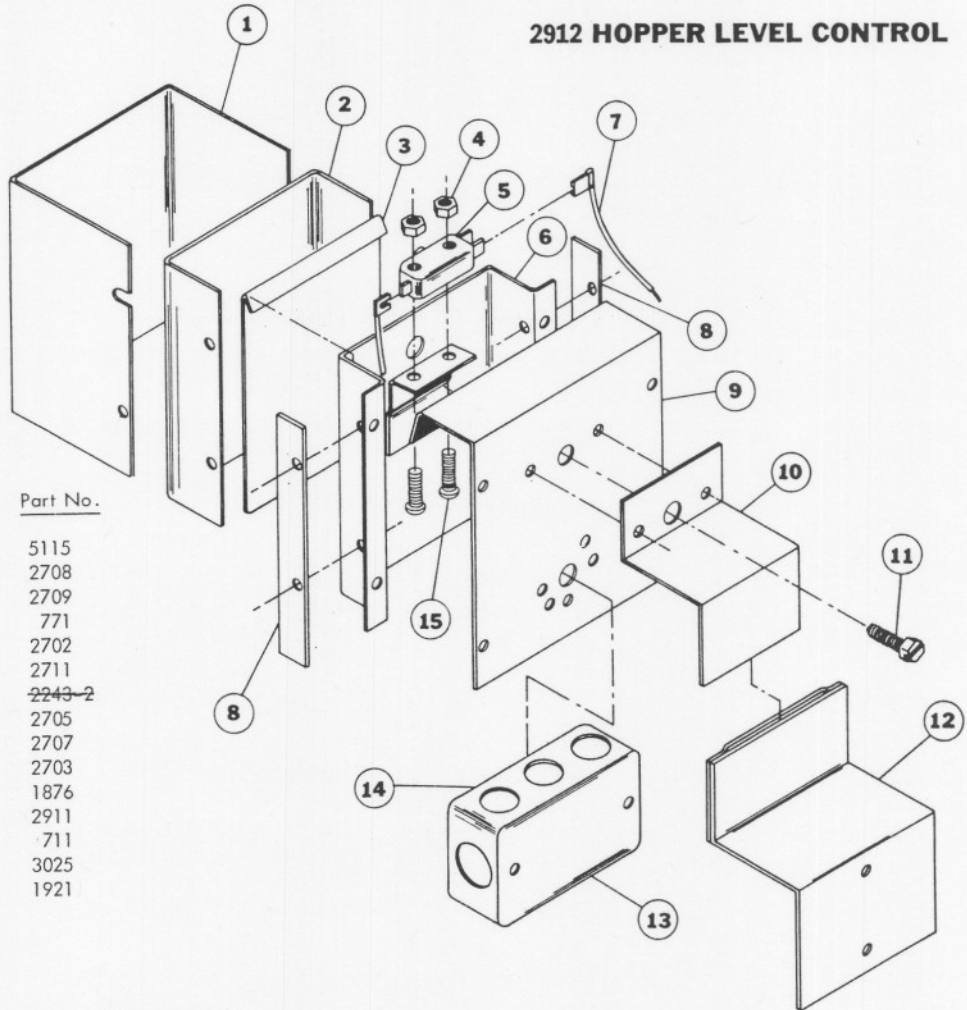
~~5300~~ Time Delay Override Panel



Key	Description	Part No.
1	Box, 5 in.	5297
2	Panel	5274
3	Time Delay Relay	5266
4	Screw, 4-40 x 5/8"	3510
5	Cover	5280
6	Screw, 10-24 x 3/8"	1951
7	Contactor	4122
8	Toggle Switch	3046
9	Cord Assembly	4999-12
10	Romex Connector	1317
11	Pilot Light	5272

FLEX-AUGER Switches

2912 HOPPER LEVEL CONTROL



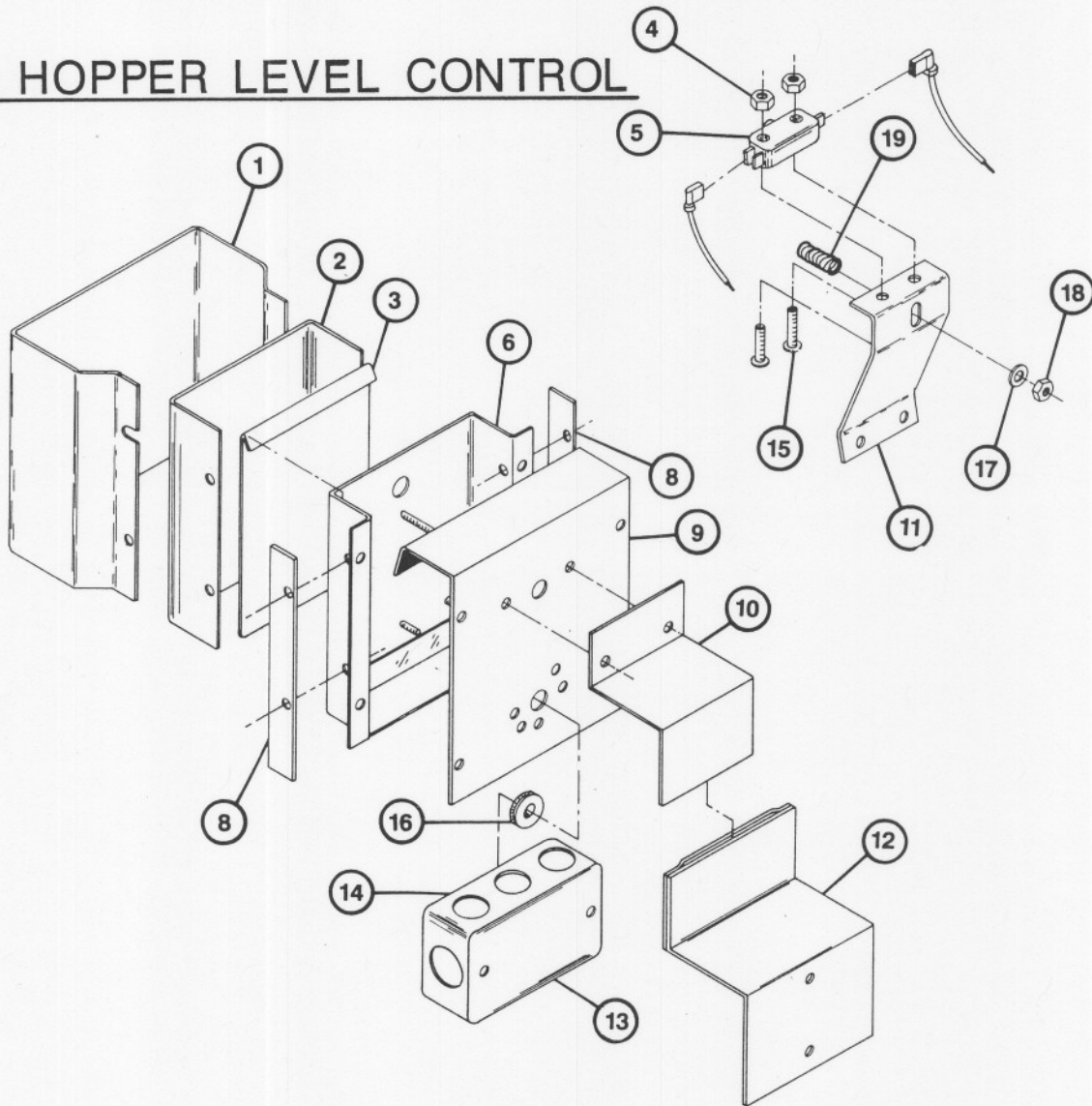
Key	Description	Part No.
1	High Differential Shield	5115
2	Paddle Cover	2708
3	Paddle	2709
4	6-32 Hex Nut	771
5	SPDT Switch	2702
6	Frame Weldment	2711
7	Hook-Up Wire	2243-2
8	Fabric Retainer	2705
9	Back	2707
10	Mounting Bracket	2703
11	10-24 x 5/8" Screw	1876
12	Mounting Bracket Ass'y.	2911
13	Cover	711
14	Handy Box	3025
15	6-32 x 7/8" Screw	1921

This version sold from March, 1967 to March, 1982.

FLEX-AUGER Switches

THIS VERSION SOLD SINCE APRIL, 1988.

2912 HOPPER LEVEL CONTROL

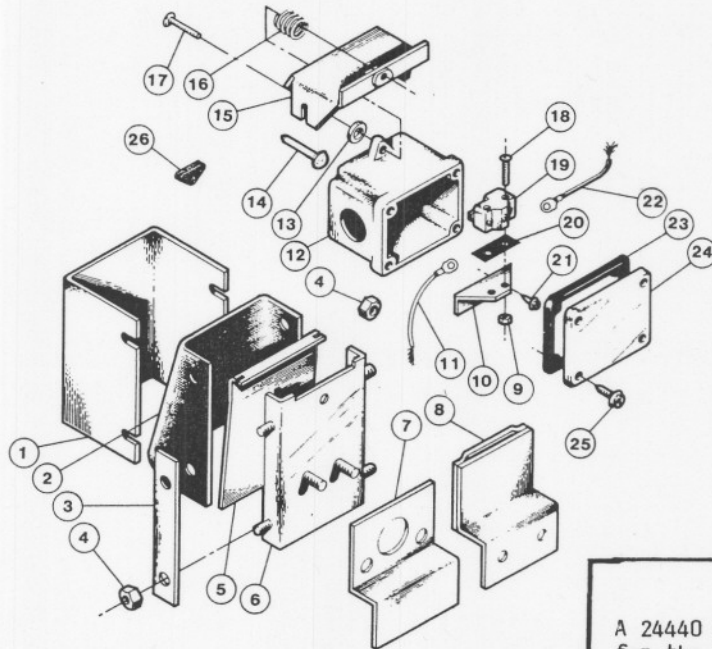


<u>Key</u>	<u>Description</u>	<u>Part No.</u>
1	High Differential Shield	24993
2	Paddle Cover	2708
3	Paddle	2709
4	6-32 Hex Nut	771
5	SPDT Switch	2702
6	Frame	2711
8	Fabric Retainer	2705
9	Back	2707
10	Mounting Bracket	2703
11	Switch Bracket	24991
12	Mounting Bracket Assembly	2911
13	Cover	711
14	Handy Box	1145
15	6-32 x 7/8 Screw	1921
16	Grommet	24
17	Flat Washer	2955-19
18	10-32 Crown Lock Nut	6963
19	Spring	24992

All parts should be ordered by **PART NUMBER** and **DESCRIPTION** as given in the **PARTS LIST**. Parts are always billed when shipped. If returned parts are defective, and within warranty period, credit will be allowed against billing.

FLEX-AUGER Switches

7800 HOPPER LEVEL CONTROL

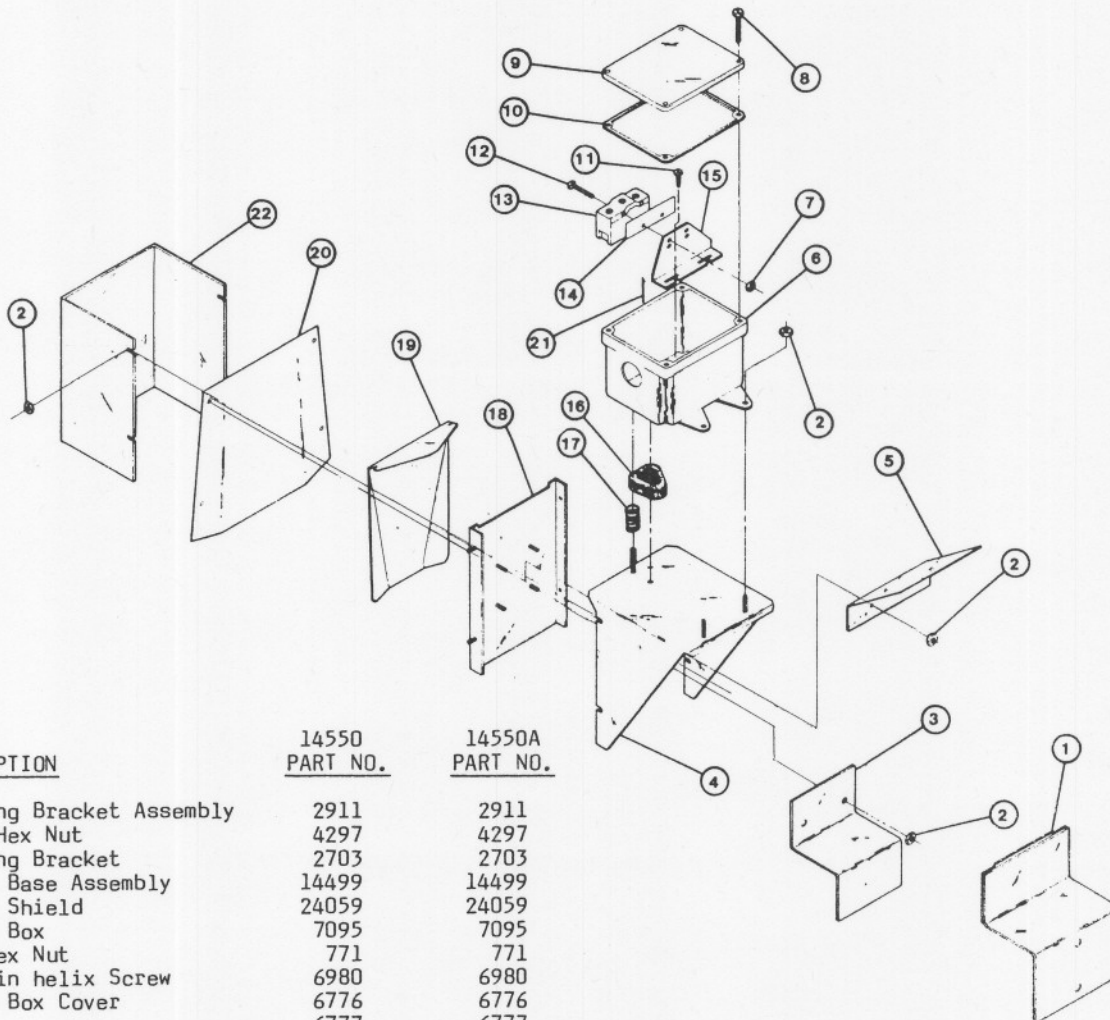


NOTE

A 24440 Update Kit is available for the 7800 Hopper Control Switch. The kit includes (1) 24417 Paddle, (1) Retainer, (1) 14270 Diaphragm, and (1) 24319 High Differential Shield.

<u>Key</u>	<u>Description</u>	<u>Part No.</u>
1	High Differential Shield	7808
2	Diaphragm	14270
3	Retainer	7806
4	#10-32 Hex Nut	4297
5	Paddle	7924
6	Frame Weldment	7803
7	Mounting Bracket	2703
8	Mounting Bracket Assembly	2911
9	#6 Hex Nut	771
10	Switch Bracket	7068
11	White Wire Lead	2243-245
12	Switch Box	7095
13	Flat Washer	149
14	Pin	8757
15	Shield Weldment	7802
16	Spring	6972
17	#10-32x1" Rd.Hd.M.S.	4418-1
18	#6-32x1" Rd.Hd.M.S.	1921
19	Switch (SPDT)	7114
20	Switch Insulation	1907-5
21	#6x3/8" Screw	6782
22	Black Wire Lead	2243-13
23	Gasket	6777
24	Cover	6776
25	#10 Twin Helix Screw	6980
26	Gasket	6968-2

14550 Hopper Level Switch

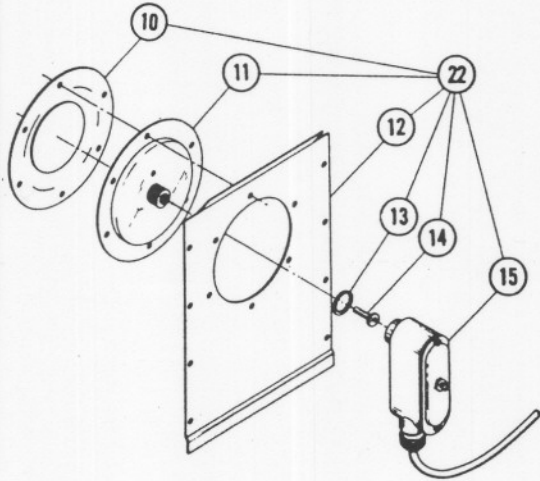


KEY	DESCRIPTION	14550 PART NO.	14550A PART NO.
1	Mounting Bracket Assembly	2911	2911
2	10-32 Hex Nut	4297	4297
3	Mounting Bracket	2703	2703
4	Switch Base Assembly	14499	14499
5	Paddle Shield	24059	24059
6	Switch Box	7095	7095
7	6-32 Hex Nut	771	771
8	#10 Twin helix Screw	6980	6980
9	Switch Box Cover	6776	6776
10	Gasket	6777	6777
11	#6 x 3/8" Sheet Metal Screw.	6782	6782
12	6-32 x 7/8" Screw	1921	1921
13	SPDT Actuator Switch	7114	7069
14	Switch Insulation	1907-5	1907-5
15	Switch Bracket	7068	7068
16	Gasket	6968-1	6968-1
17	Spring	6972	6972
18	Switch Frame Assembly	14498	14498
19	Paddle	14519	14519
20	Diaphragm	14270	14270
21	Actuator Pin	6775	6775
22	High Differential Shield	7808	7808

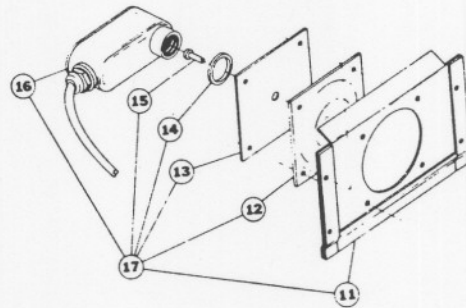
FLEX-AUGER Switches

~~4883~~ SWITCH

Item	Description	Part No.
10	Diaphragm	4591
11	Diaphragm Plate	7699
12	Access Panel	4939
	Solid Plate Access Panel	5838
13	Seal	4910
14	Plunger	4595
15	Switch Assembly	4933-1
22	Switch Panel	4883



~~4957~~ SWITCH

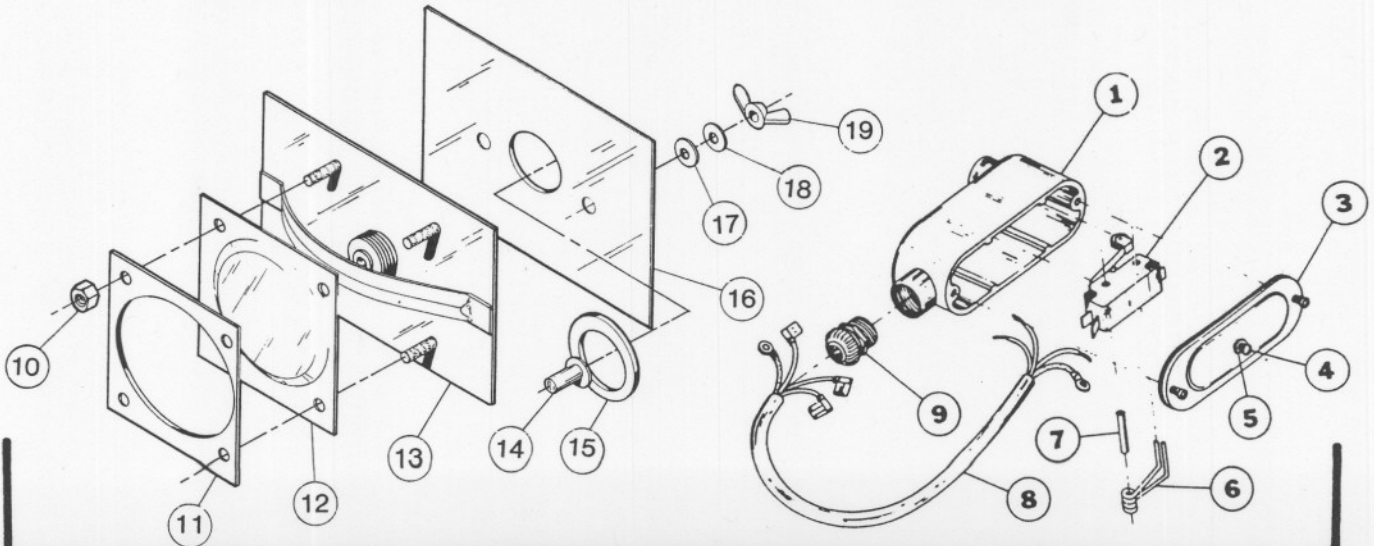


Item	Description	Part No.
11	Access Panel	4952
	Solid Plate Access Panel	5840
12	Diaphragm	4956
13	Switch Plate	4944
14	Seal	4910
15	Plunger	4595
16	Switch Assembly	4933-2
17	Switch & Plate Assembly	4957

6143 SWITCH

Key	Description	Part No.
1	Switch Housing	4586
2	Switch	4604
3	Cover Assembly	4609
4	10-32x1" Screw	4418-1
5	10-32 Hex Nut	4297
6	Spring	4976
7	Spring Pin	4589
8	Cord, 9 ft.	4737
9	Water-tight Connector	4598
	Switch Assembly (parts 1-9)	4933-1

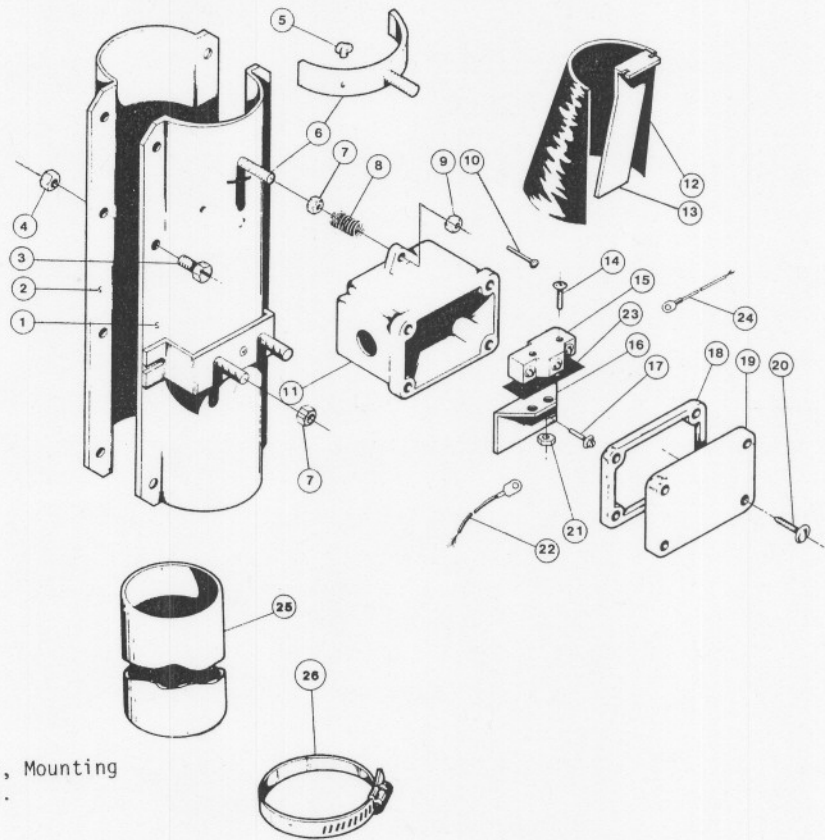
Key	Description	Part No.
10	10-24 Hex Nut	313
11	Diaphragm Plate	4948
12	Diaphragm Assembly	4956
13	Back Plate Weldment	6160
14	Plunger	4595
15	Seal	6144
16	Switch Clean-out Cover	6154
17	5/16" Rubber Washer	6152
18	5/16" Washer	2230
19	5/16-18 Wing Nut	2146



FLEX-AUGER Switches

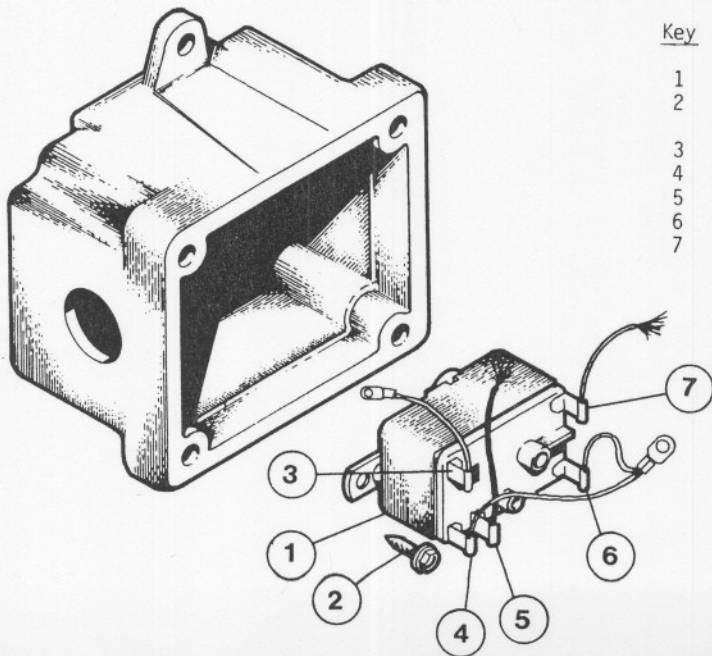
7100 DROP TUBE SWITCH

Key	Description	Part No.
*1	Front Tube Half	7067
2	Rear Tube Half	7088
3	1/4-20x1/2" Hex Hd. M.S.	1487
4	1/4-20 Hex Nut	751
5	6 x 1/4 S.M.S.	7092
6	Retainer	7090
7	10-32 Hex Nut	4297
8	Spring	6972
9	10-32 Hex Lock Nut	6963
10	Pin	8757
11	Switch Box	7095
12	Diaphragm	7089
13	Paddle	7096
14	6-32x7/8" Rd. Hd. M.S.	1921
15	Switch	7114
16	Switch Bracket	7068
17	6-32 Screw	6782
18	Gasket	6777
19	Switch Box Cover	6776
20	#10 Twin Helix Screw	6980
21	6-32 Hex Nut	771
22	White Wire Lead	2243-245
23	Switch Insulation	1907-5
24	Black Wire Lead	2243-13
25	PVC Drop Tube (not included)	1932
26	Tube Clamp (not included)	6183



*7067 Tube Half Assembly includes Retainer, Mounting Bracket, Diaphragm and necessary hardware.

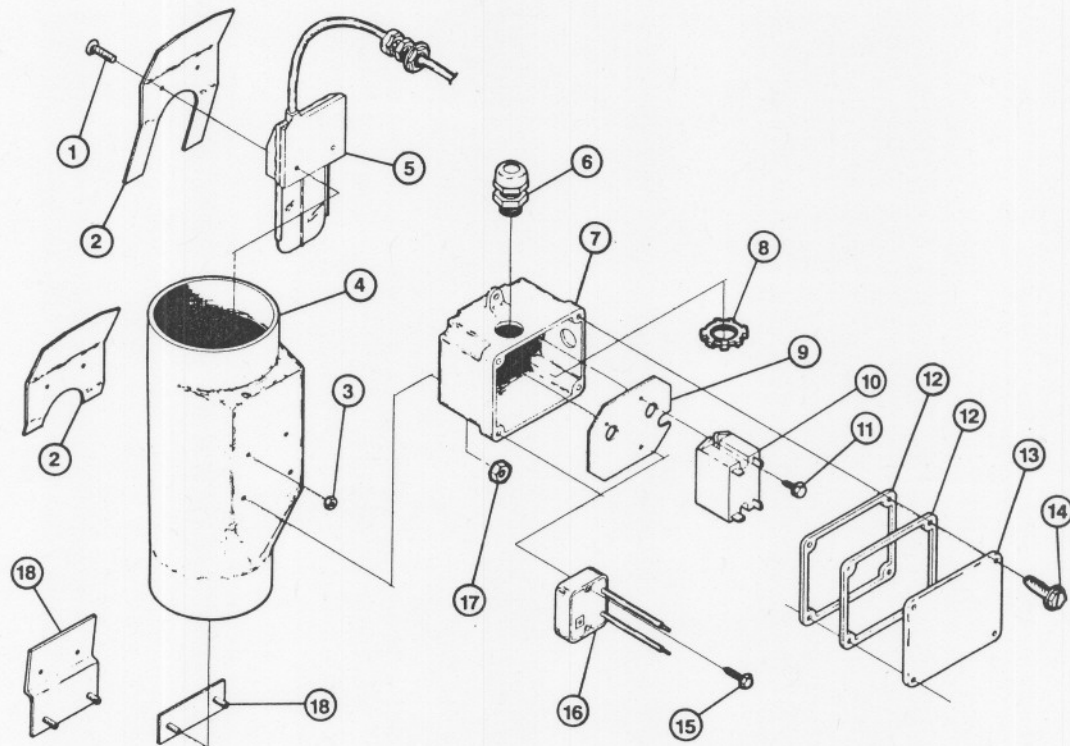
7245 LOCKOUT RELAY KIT



Key	Description	Part No.
1	Relay	5574
2	#6x3/8 Hx.Wash.Hd.S.M.S. (2 required)	6782
3	Wire Lead Assembly-black	2243-263
4	Wire Lead Assembly-yellow	2243-262
5	Wire Lead Assembly-orange	2243-226
6	Wire Lead Assembly-yellow	2243-262
7	Wire Lead Assembly-white	2243-179

FLEX-AUGER Switches

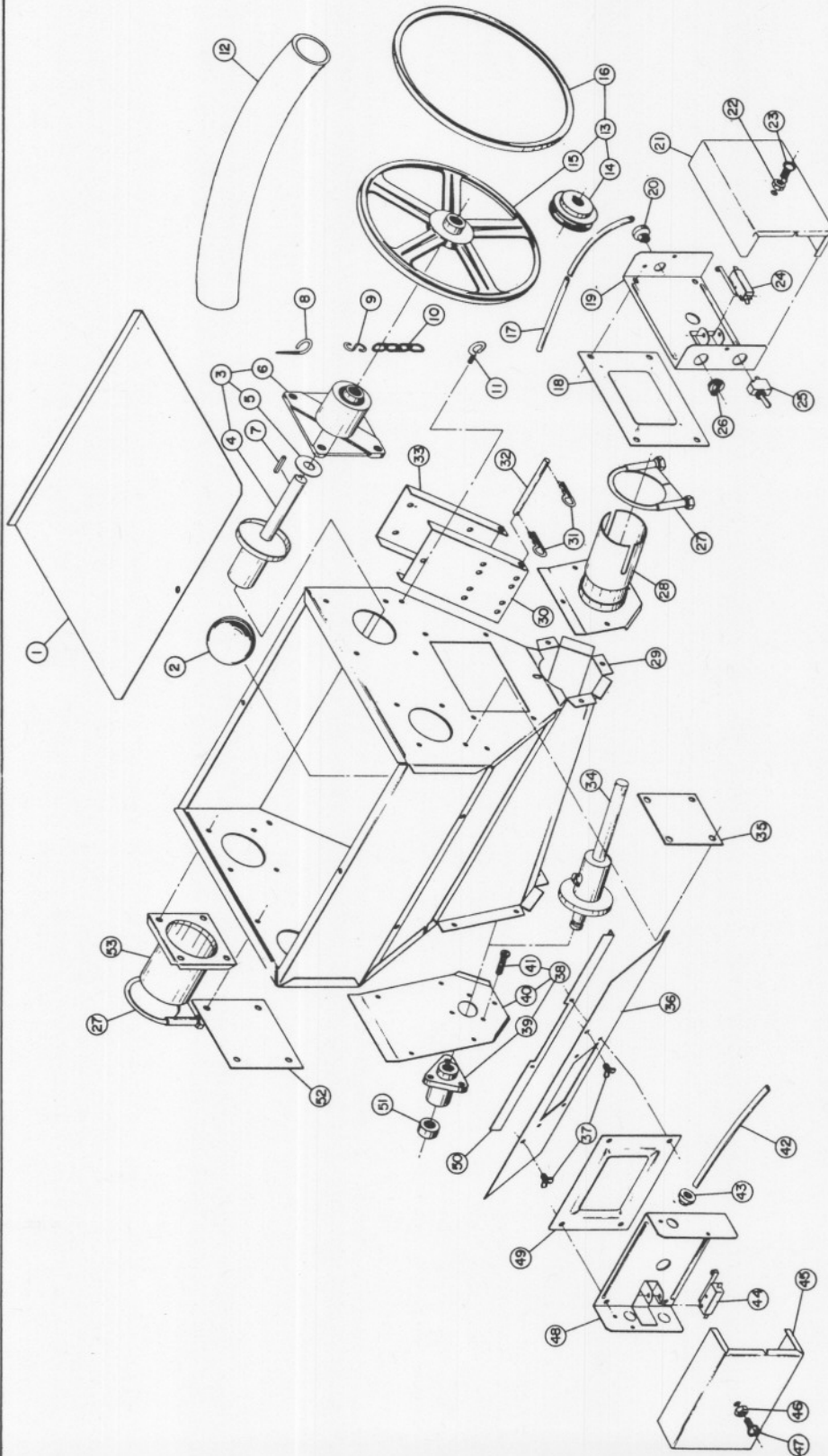
14700, ~~14701-1~~, & 14701-2 DROP TUBE SWITCH



<u>Key Description</u>	<u>14700 Part No.</u>	<u>14701-1 Part No.</u>	<u>14701-2 Part No.</u>
1 6-32x1½ Pan Head Screw	2220	2220	2220
2 Shield	24322	24322	24628
3 6-32 Hex Nut	771	771	771
4 Switch Tube	24323	24323	24626
5 Switch Assembly	14786-2	14786-2	14786-2
6 1/2" Liquid Tight Connector	23779	23779	23779
7 Switch Box	24324	24324	24324
8 1/2" Conduit Locknut	3357	3357	3357
9 Box Plate	24321	24321	24321
10 Relay	24335	24335	24335
11 #8x3/8" Sheet Metal Screw	13019	13019	13019
12 Gasket	6777	6777	6777
13 Switch Box Cover	6776	6776	6776
14 Twin Helix Screw	6980	6980	6980
15 #8x1" Sheet Metal Screw	5998	5998	5998
16 "ON" Delay Timer	----	24209	24209
17 10-32 Hex Nut	4297	4297	4297
18 Back Plate	24325	24325	24627

FLEX-AUGER Hoppers

3958 Intermediate Hopper

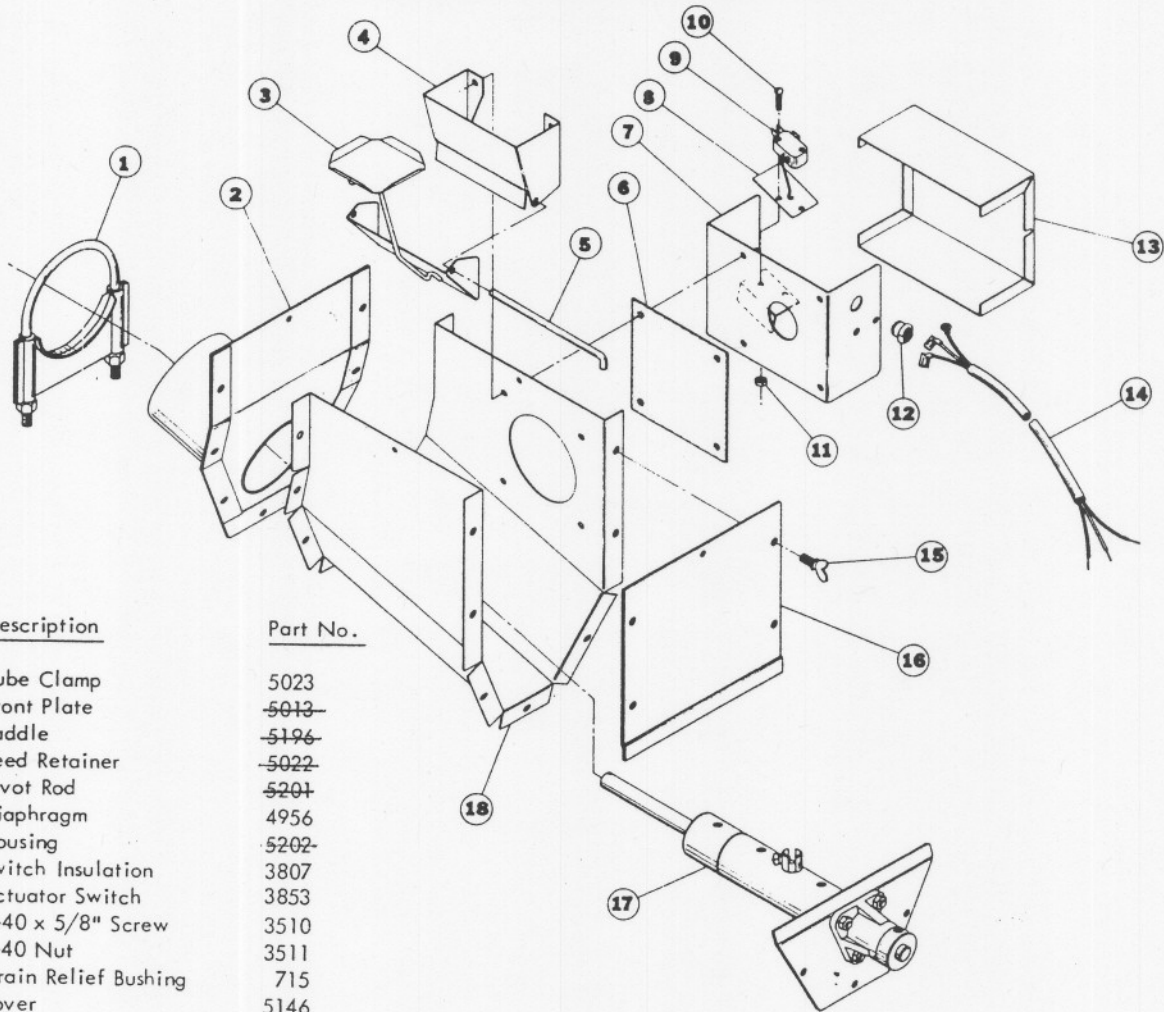


Key	Description	Part No.	Key	Description	Part No.	Key	Description	Part No.
1	Cover Slide	3200	27	Tube Clamp, 4 used	4141	40	Rear Bearing Plate	4573
2	Cannonball	3531	28	Front Plate	4572	41	1/4-20 Burton Hd. Screw	2432
3	Bearing Plate & Driver	2111	29	Hopper	4502	42	Card Set	3944
4	Driver	2080	30	Adaptor Plate	3274	43	Strain Relief Bushing	715
5	Flat Washer	1484	31	Hair Pin, 2 used	2664	44	Switch	3937
6	Bearing Plate	2096	32	Pivot Pin	3270	45	Cover	4200
7	3/16" Sq. Key	2112-1	33	Motor Mount	3277	46	10-32 Hex Nut	4297
8	Screw Hook, 4 used	1214	34	Boot Anchor	2486-4	47	10-32 x 3/4" Screw	4410-2
9	"5" Hook, 8 used	723	35	Solid Plate	3550	48	Housing	4292
10	Chain, 5 ft.	1302	36	Switch Access Panel	3720	49	Diaphragm	4289
11	Eye Bolt	1503-2	37	Wing Screw	4571	50	Switch Bracket	4265
12	15° Elbow	1918	38	Rear Bearing Ass'y.	2188	51	Collar	1386
13	Belt & Pulley Kit	3947	39	Bearing		52	Solid Plate	3953
						53	Tube Anchor	3389

17-26 are components of 4301 Switch 42-49 are components of 4300 Switch

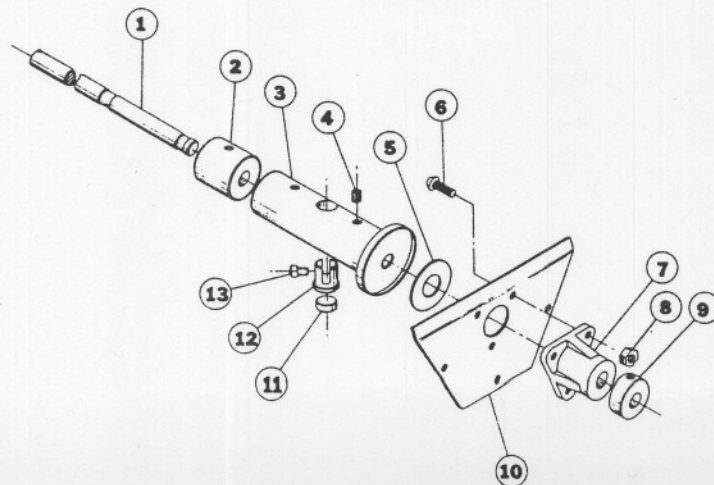
FLEX-AUGER Hoppers

5001 EXTENSION HOPPER



Key	Description	Part No.
1	Tube Clamp	5023
2	Front Plate	5013
3	Paddle	5196
4	Feed Retainer	5022
5	Pivot Rod	5201
6	Diaphragm	4956
7	Housing	5202
8	Switch Insulation	3807
9	Actuator Switch	3853
10	4-40 x 5/8" Screw	3510
11	4-40 Nut	3511
12	Strain Relief Bushing	715
13	Cover	5146
14	Cord Ass'y.	4999-2
15	Wing Head Screw	3720
16	Access Panel	5003
17	Anchor & Bearing Ass'y.	5005
18	Boot Shell	5204

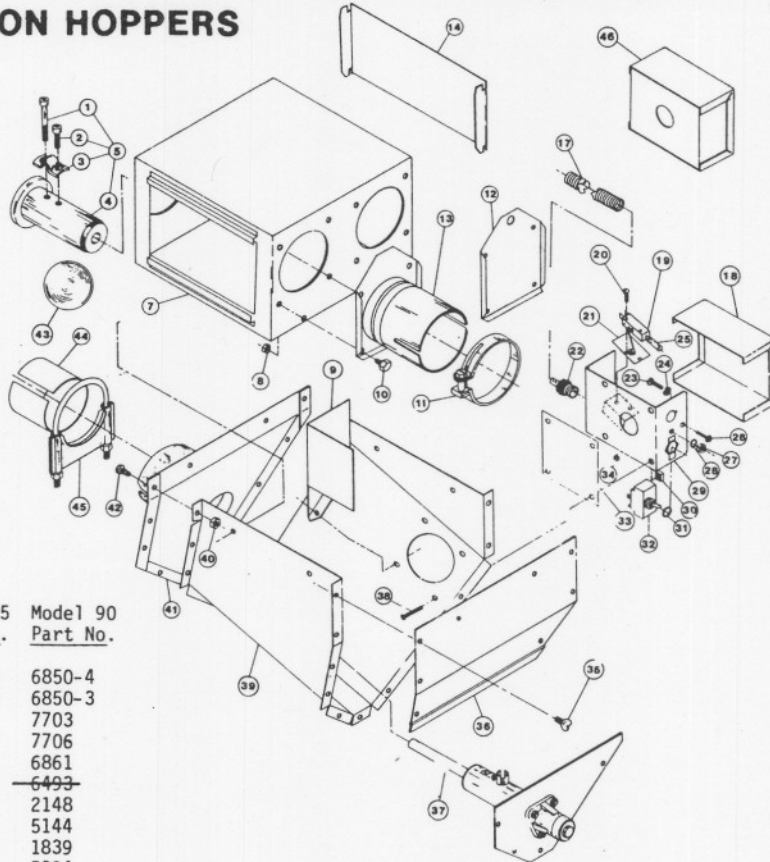
5005 BEARING & ANCHOR ASSEMBLY



Key	Description	Part No.
1	Anchor Shaft	5031
2	Restrictor	5010
3	Anchor Tube	5007
4	5/16-18 x 3/8" Set Screw	1174
5	5/8" Flat Washer	1484
6	Button Head Screw	2432
7	Bearing	2188
8	1/4-20 Lock Nut	1269
9	Set Collar	1386
10	Bearing Plate	5011
11	Clamp Spacer	5009
12	Clamp Pin	4702
13	Square Hd. Set Screw	5095

FLEX-AUGER Hoppers

6502 & 6484 EXTENSION HOPPERS (75) (90)

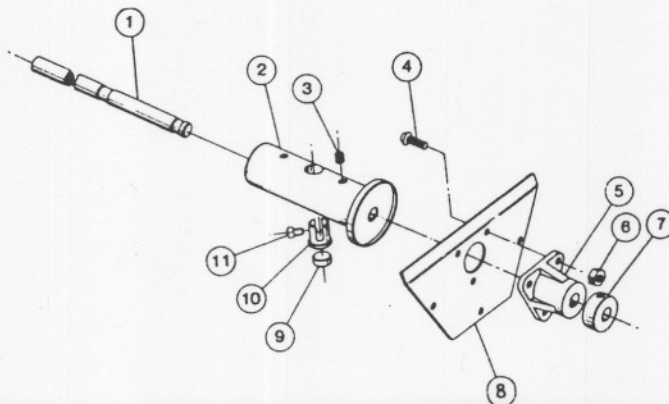


Key Description

Key	Description	Model 75 Part No.	Model 90 Part No.
1	5/16-18x2-1/4" Soc.Hd.C.S.	6850-4	6850-4
2	5/16-18x1/2" Soc.Hd. C.S.	6850-3	6850-3
3	Anchor Block	7703	7703
4	Driver Weldment	7704	7706
5	Driver Assembly	6862	6861
7	Body Weldment	6493	6493
8	5/16-18 Lock Nut	2148	2148
9	Differential Guard	5144	5144
10	5/16-18x1/2" Hx.Hd. M.S.	1839	1839
11	Tube Clamp	6515	5394
12	Cover Plate	5139	5139
13	Tube Anchor	6518	5069
14	Slide	5138	5138
17	3/8" Flex Cable	20140-8	20140-8
18*	Cover	6488	6488
19*	Actuator Switch	4604	4604
20*	6-32x7/8" Rd.Hd. M.S.	1921	1921
21*	Switch Insulation	1907-4	1907-4
22	3/8" Flex Connector	6042	6042
23*	10-32x1/2" Grn.Binder Hd.M.S.	4303-4	4303-4
24*	Cup Washer	5775	5775
25*	Plastic Sleeve	1787	1787
26*	10x32 Self-Tapping Screw	5776	5776
27*	10-32 Hex Nut	4297	4297
28*	#10 Lock Washer	305	305
29*	Housing	6487	6487
30	10-24 P.M. Nut	135	135
31*	Lock Washer	5773	5773

Key Description

Key	Description	Model 75 Part No.	Model 90 Part No.
32*	DPST Toggle Switch	3046	3046
33*	Diaphragm Assembly	4956	4956
34*	6-32 Hex Nut	771	771
35	1/4-20x1/2 Wing Hd. Screw	3720	3720
36	Access Panel	5118	5118
37	Anchor & Bearing Assembly	6498	5143
38	10-24x1/2" Truss Hd. M.S.	1795	1795
39	Boot Shell	5129	5129
40	1/4-20 Hex Nut	751	751
41	Front Plate	6509	5126
42	1/4-20x1/2" Hx.Hd. M.S.	1487	1487
43	Cannonball	6846	6846
44	Tube Insert	6524	----
45	Tube Clamp	6515	6721
46	Switch Assembly	6041	6041

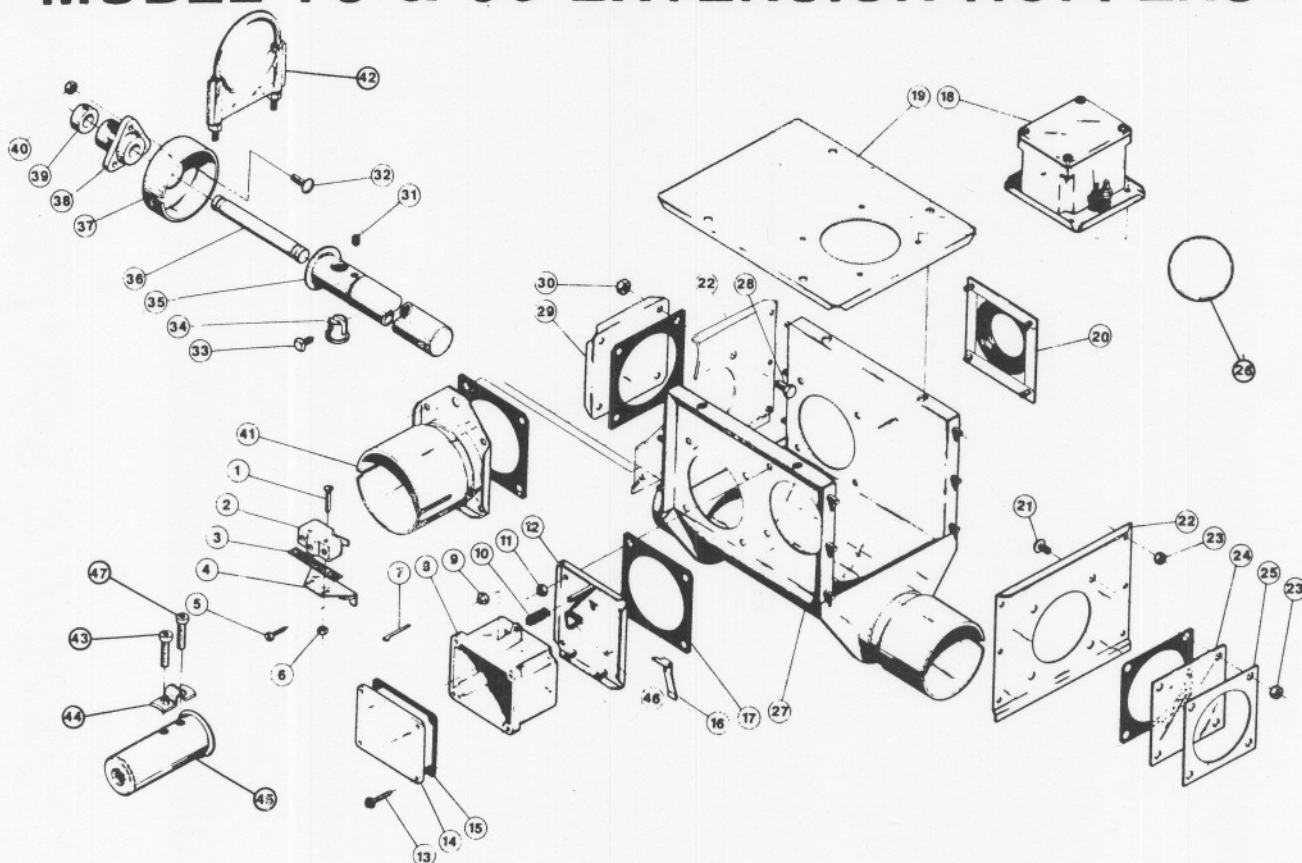


EXTENSION HOPPER BEARING & ANCHOR ASSEMBLIES *

Key	Description	#6498 Model 75	#5143 Model 90
1	Anchor Shaft	6130	5031
2	Anchor Tube	6139	5007
3	5/16-18x3/8 Setscrew	1174	1174
4	1/4-20x5/8 Socket Hd. M.S.	2432	2432
5	Boot Bearing	2188	2188
6	1/4-20 Locknut	1269	1269
7	5/8 Shaft Collar	1386	1386
8	Bearing Plate	6491	5124
9	Spacer	----	5009
10	Clamp Pin	4702	4702
11	5/16-18x3/8 Sq. Hd. Setscrew	5095	5095

FLEX-AUGER HOPPERS

MODEL 75 & 90 EXTENSION HOPPERS



ITEM	DESCRIPTION	MODEL 90 PART NO.	MODEL 75 PART NO.	ITEM	DESCRIPTION	MODEL 90 PART NO.	MODEL 75 PART NO.
1	6-32x7/8 Pan Hd Screw	1921	1921	31**	5/16-18x3/8 Allen Set Screw	1174	1174
2	Actuator Switch	7114	7114	32***	1/4-20x5/8 Button Hd Screw	2432	2432
3	Switch Insulation	1907-5	1907-5	33**	5/16-18x3/8 Set Screw	5095	5095
4	Switch Bracket	7068	7068	34**	Clamp Pin	4702	4702
5	6x3/8 Slotted Wash. Hd Screw	6782	6782	35**	Anchor Tube Weldment	6833	6840
6	6-32 Hex Nut	771	771	36**	Anchor Shaft	6832	6839
7	Actuator Pin	8757	8757	37***	Bearing Cap	6165	6141
8	Switch Box	7841	7841	38***	Boot Bearing Assembly	14144	14144
9	10-32 Hex Locknut	6963	6963	39***	5/8 Set Collar	1386	1386
10	Spring	6972	6972	40***	1/2-20 Locknut	1269	1269
11	10-32 Hex Nut	4297	4297	41	Tube Anchor Weldment	5069	6518
12	Mounting Plate Assembly	7908	7908	42	Tube Clamp	6721	6515
13	#10 Twin Helix Screw	6980	6980	43*	5/16-18x1/2 Socket Hd Screw	6850-3	6850-3
14	Switch Box Cover	6776	6776	44*	Anchor Block	7703	7703
15	Gasket	6777	6777	45*	Driver Weldment	7706	7704
16	Paddle	7896	7896	46	Gasket	6968-1	6968-1
17	Seal	4873	4873	47*	5/16-18x2 1/2 Socket Hd Screw	6850-4	6850-4
18	Switch and Plate Assembly	7840	7840				
19	Hopper Cover	7838	7838				
20	Diaphragm Assembly	7900	7900				
21	1/4-20x5/8 Truss Hd Mach Screw	4305	4305				
22	Access Plate Assembly	7928	7928				
23	1/4-20 Hex Nut	751	751				
24	Window	7852	7852				
25	Window Plate	7842	7842				
26	Cannonball	3531	3531				
27	Tandem Boot Body	7927	7878				
28	5/16-18x1/2 Hx Hd Bolt	1839	1839				
29	Cover Plate	4878	4878				
30	5/16-18 Hex Nut	2145	2145				

Model 75 Extension Hoppers may be ordered under Chore-Time Part No. 7944.

Model 90 Extension Hoppers may be ordered under Chore-Time Part No. 7869.

*These components may be purchased as an assembly under CHORE-TIME Part Nos. 6861 for Model 90 and 6862 for Model 75.

**These components may be purchased as an assembly under CHORE-TIME Part Nos. ~~6836~~ for Model 90 and ~~6836~~ for Model 75.

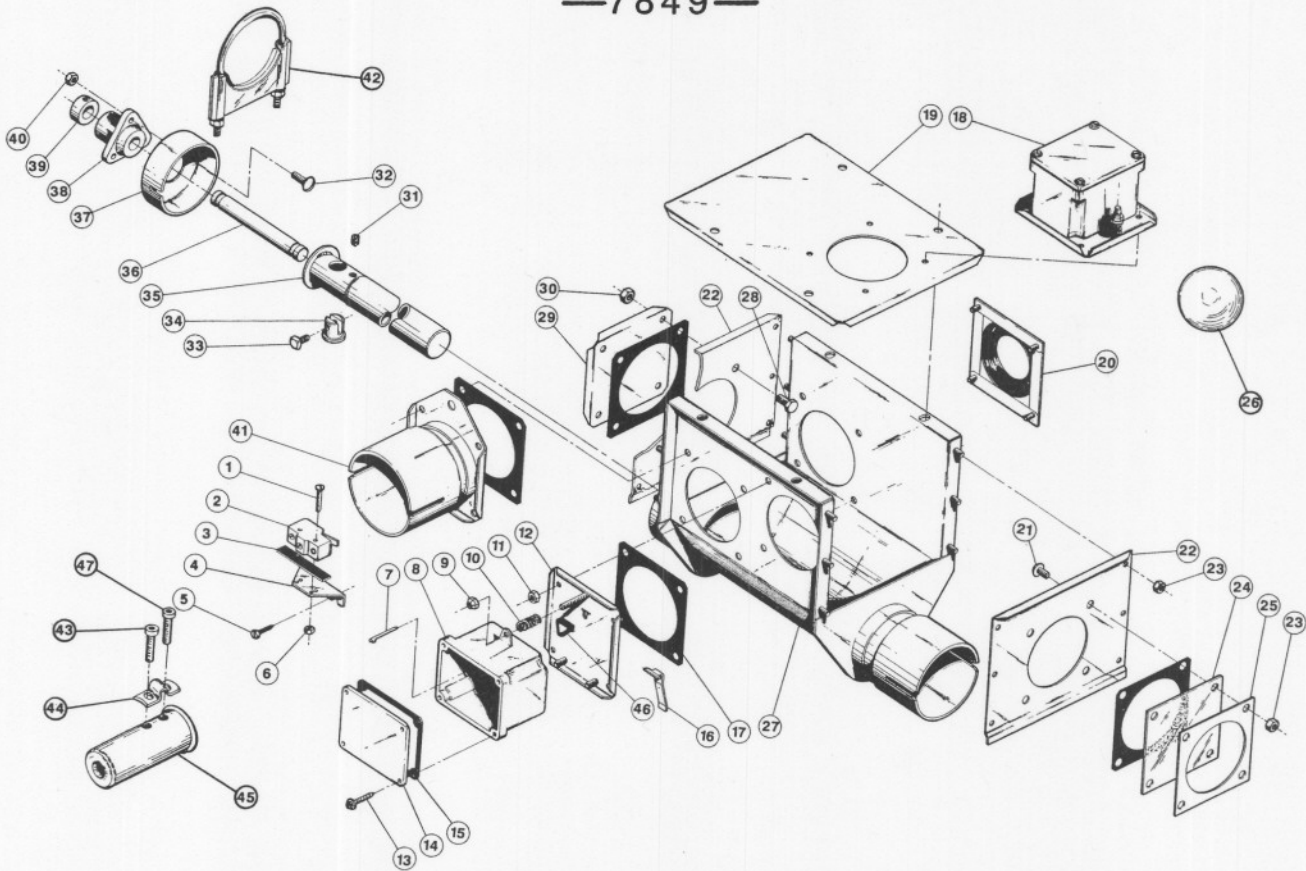
***These components, plus the components of ~~6836~~ or ~~6836~~, may be purchased as an assembly under CHORE-TIME Part Nos. 6166 for Model 90 and 6142 for Model 75.

Items 1 thru 16 may be purchased as an assembly under CHORE-TIME Part No. 7840.

FLEX-AUGER Hoppers

HI-MOISTURE CORN EXTENSION HOPPER

—7849—



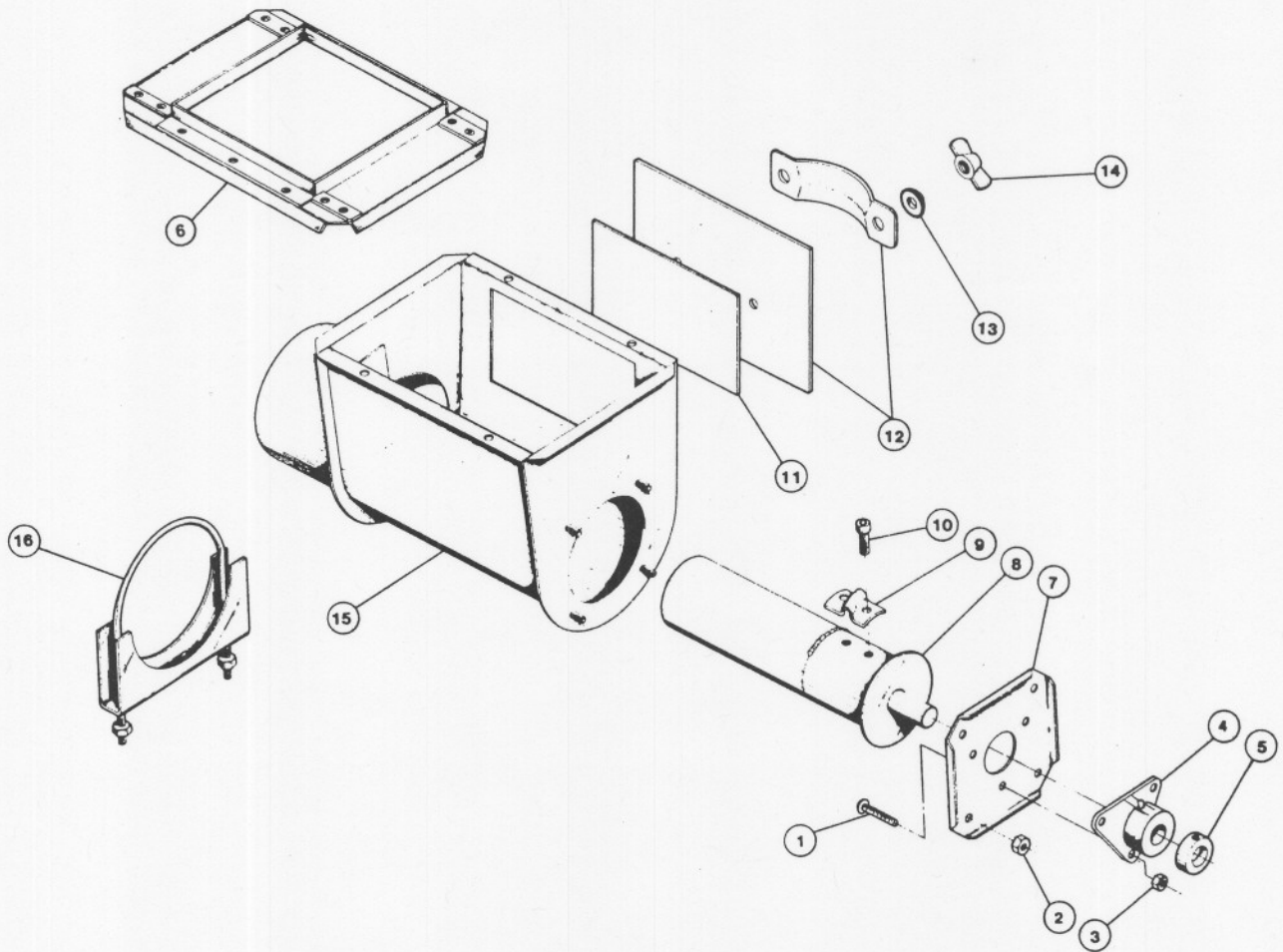
KEY	DESCRIPTION	PART NO.	KEY	DESCRIPTION	PART NO.
1	6-32x7/8" Rd.Hd.M.S.	1921	24	Window	7852
2	SPDT Actuator Switch	7114	25	Window Plate	7842
3	Switch Insulation	1907-5	26	Hollow Cannonball	6846
4	Switch Bracket	7068	27	Tandem Boot Body	7858
5	#6x3/8" Slot.Wash.Hd.Scrw.	6782	28	5/16-18x1/2" Hx.Hd.M.S.	1839
6	6-32 Hex Nut	771	29	Cover Plate	7859
7	Pin	8757	30	5/16-18 Hex Nut	2145
8	Switch Box	7841	**31	5/16-18x3/8" Setscrew	1174
9	10-32 Hex Lock Nut	6963	**32	1/4-20x5/8" Rd.Hd.Screw	2432
10	Spring	6972	**33	5/16-18x3/8" Sq.Hd.Setscrew	5095
11	10-32 Hex Nut	4297	**34	Clamp Pin	4702
12	Mounting Plate	7908	**35	Anchor Tube	6840
13	#10 Twin Helix Screw	6980	**36	Anchor Shaft	6839
14	Switch Box Cover	6776	**37	Bearing Cap	7860
15	Gasket	6777	**38	Boot Bearing	14144
16	Paddle	7896	**39	5/8" Shaft Collar	1386
17	Seal	4873	**40	1/4-20 Lock Nut	1269
*18	Switch And Plate Assembly	7840	41	Tube Anchor	7862
19	Hopper Cover	7838	42	Model 90 Tube Clamp Kit	6721
20	Diaphragm Assembly	7900	43	5/16-18 Socket Hd. Cap Screw	6850-3
21	1/4-20x5/8" Tr.Hd.M.S.	4305	44	Anchor Clamp	7703
22	Access Panel Assembly	7857	45	Driver Weldment	7704
23	1/4-20 Hex Nut	751	46	Gasket	6968-1
			47	5/16-18 Socket Hd. Cap Screw	6850-4

*7840 Switch and Plate Assembly is made from components 1 through 17 shown in the parts list

**Indicates components of the 6758 Boot Bearing and Anchor Assembly

HIGH MOISTURE CORN FLEX-AUGER EXTENSION BOOT KIT
IS CHORE-TIME® PART NO. 7849

Model 125 Extension Boot Kit 8536



KEY	DESCRIPTION	PART NO.
1*	1/4-20x5/8" Button Head Screw	2432
2	5/16-18 Locknut	2148
3*	1/4-20 Locknut	1269
4*	Boot Bearing	14144
5*	5/8" Set Collar	1386
6	Adapter Plate	7856
7*	Bearing Plate	24004
8*	Anchor Tube Weldment	24003
9*	Anchor Clamp	7703

KEY	DESCRIPTION	PART NO.
10*	5/16-18x7/8" Soc.Hd.Cap Screw	6850-1
11	Back Plate Weldment	6298
12	Cover Weldment	6301
13	5/16" Sealing Washer	8491
14	5/16" Wing Nut	2146
15	Boot Body	24032
16	Tube Clamp	8111
	Not shown: Hardware Pkg.	7871

All of the above plus a 6500-9 Control Unit is the Model 125 Extension Boot Kit, Chore-Time Part No. 8606.

*Indicates components of 24031 Anchor & Bearing Assembly.