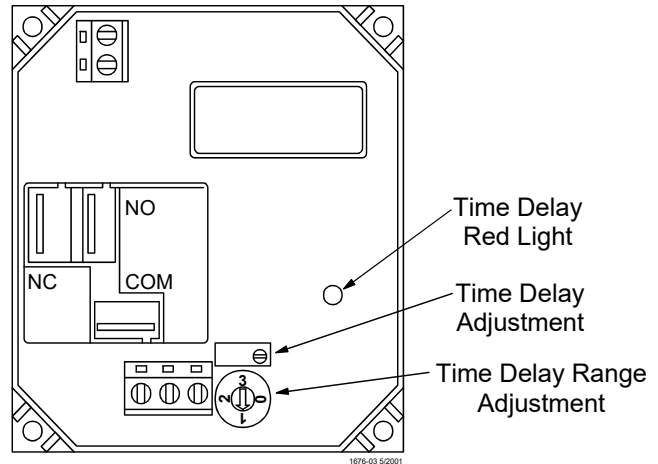


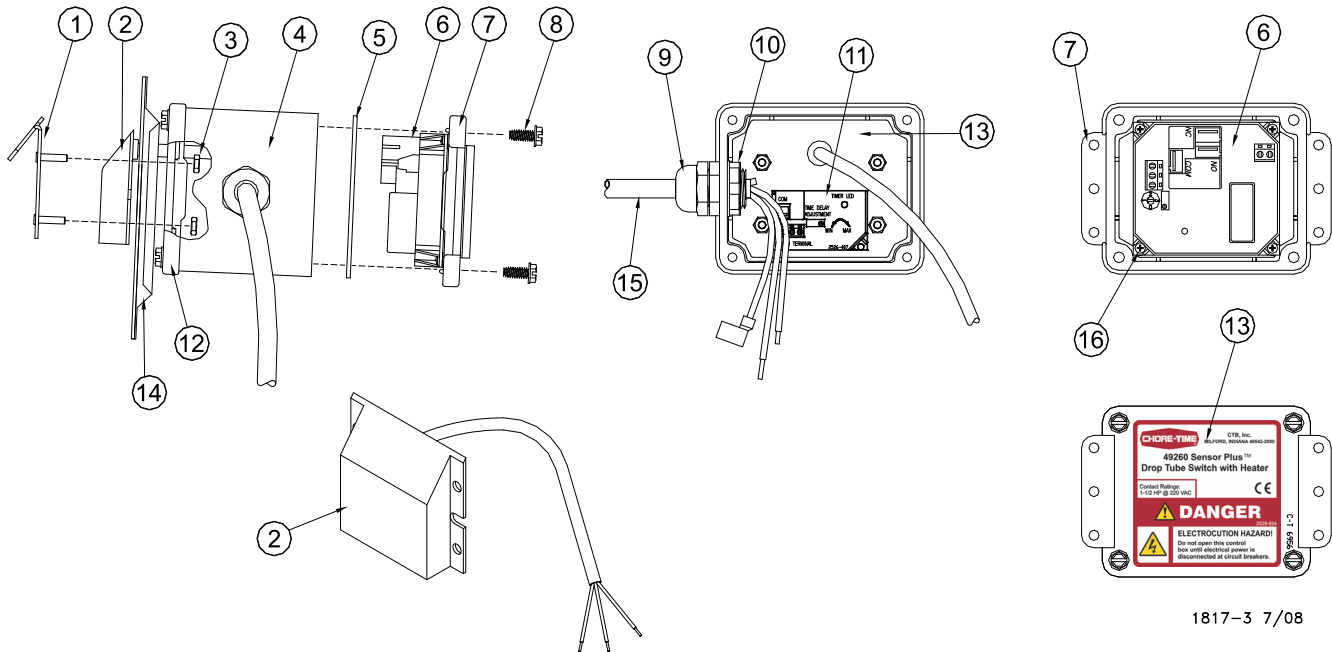
Time Delay Adjustment

The time delay is set at the factory at 10 to 15 seconds.

1. Select a time delay range for the SENSOR PLUS™ switch. The ranges are:
 - 0 0 to 5 minutes
 - 1 0 to 10 minutes
 - 2 0 to 30 minutes
 - 3 0 to 60 minutes
2. With power applied, locate the Time Delay Red Light in the junction box. A slow blinking light means that the time delay is long.
3. Turning the Time Delay Adjustment counter-clockwise will shorten the time delay and make the light blink faster, turning the Time Delay Adjustment clockwise will lengthen the time delay and make the light blink slower.



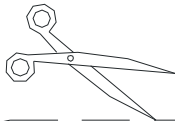
SENSOR PLUS Drop Tube Switch Parts List



Item	Description	Part No.
1	Sensor Retainer & Deflector	51055
2	Machined Sensor with Heater	48579
3	#6-32 Nut	771
4	Machined Junction Box	42627-1
5	Gasket	6777
6	Sensor Plus Circuit Board with Heater	48579
7	Junction Box Bottom Cover	6956
8	#10 Screw	28075

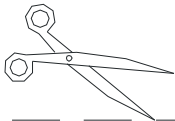
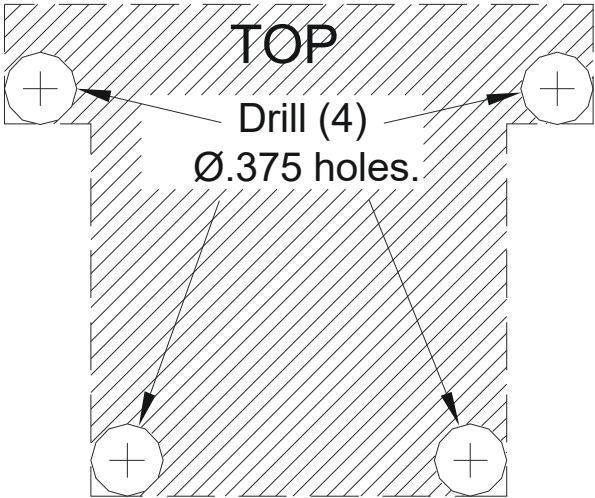
Item	Description	Part No.
9	1/2" Water Tight Connector	23779
10	Plastic Conduit Lock Nut	43662
11	Adjustment Decal	2526-409
12	Machined Junction Box Cover	42611
13	Danger/Product Identification Decal	2529-824
14	Frame-Seal Assembly	49263
15	Cord Assembly	4999-106
16	#6 Screw	35493

Drill and Saw Template



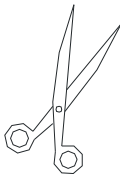
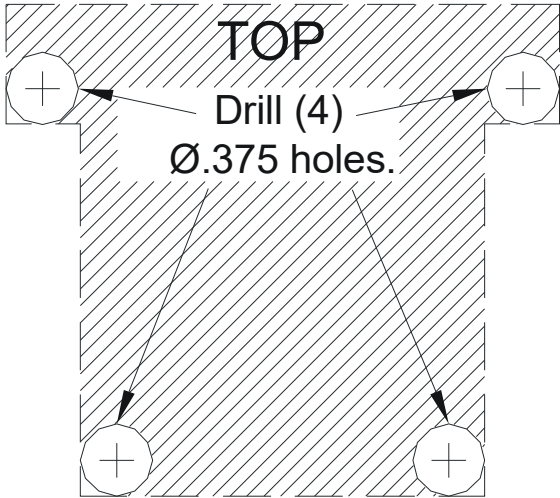
Drill and Saw Template For 1932 (3.172") Drop Tube

Place vertically at desired location on Drop Tube. Drill and Saw, or cut to remove shaded area of the tube wall.



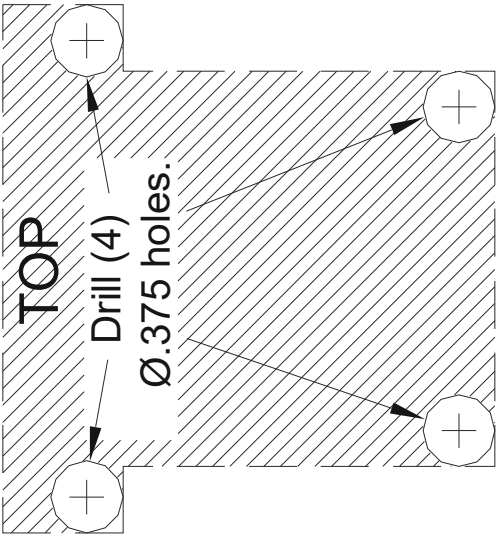
Drill and Saw Template For 6381 (3.800") Drop Tube

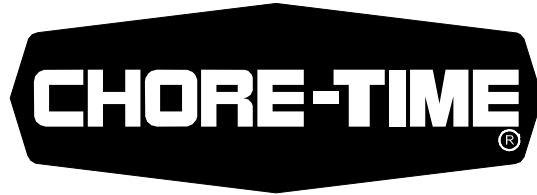
Place vertically at desired location on Drop Tube. Drill and Saw, or cut to remove shaded area of the tube wall.



Drill and Saw Template For 9900 (4.970") Drop Tube

Place vertically at desired location on Drop Tube. Drill and Saw, or cut to remove shaded area of the tube wall.





MADE TO WORK.

BUILT TO LAST.®

Revisions to this Manual

Page No.	Description of Change	ECO
Various	Updated to CE Standards	34835

**For additional parts and information, contact your nearest Chore-Time distributor or representative.
Find your nearest distributor at: www.choretime.com/contacts**

CTB, Inc.
PO Box 2000
Milford, Indiana 46542-2000 USA
Phone (574) 658-4101 Fax (877) 730-8825
Email: choretime@choretime.com
Internet: www.choretime.com