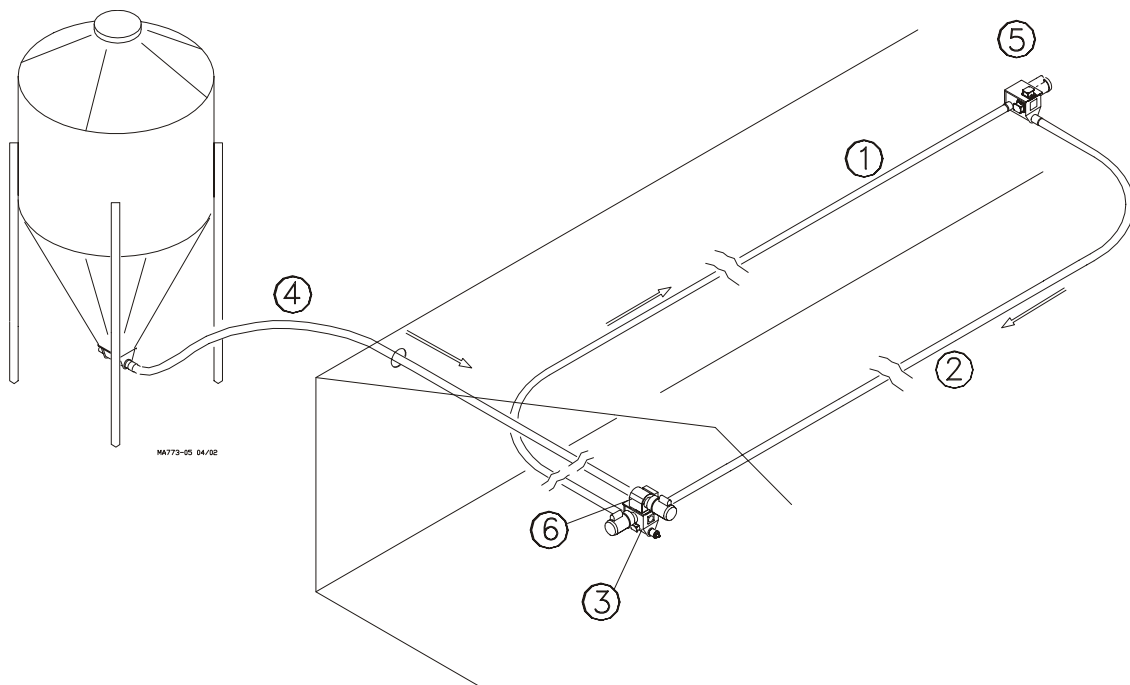




# *Poultry Production Systems*

## **Circulating Feed Delivery System Installation Instructions**

**for  
Model 55, 75, 90, & HMC FLEX-AUGER®  
Feed Delivery Systems**



**Installation and Operators Manual**

**Installation and Operators Manual**

## Chore-Time Warranty

Chore-Time Equipment, a division of CTB, Inc., ("Chore-Time") warrants each new CHORE-TIME® product manufactured by it to be free from defects in material or workmanship for one year from and after the date of initial installation by or for the original purchaser. If such a defect is found by the Manufacturer to exist within the one-year period, the Manufacturer will, at its option, (a) repair or replace such product free of charge, F.O.B. the factory of manufacture, or (b) refund to the original purchaser the original purchase price, in lieu of such repair or replacement. Labor costs associated with the replacement or repair of the product are not covered by the Manufacturer.

### CONDITIONS AND LIMITATIONS

1. The product must be installed by and operated in accordance with the instructions published by the Manufacturer or Warranty will be void.
2. Warranty is void if all components of the system are not original equipment supplied by the Manufacturer.
3. This product must be purchased from and installed by an authorized distributor or certified representative thereof or the Warranty will be void.
4. Malfunctions or failure resulting from misuse, abuse, negligence, alteration, accident, or lack of proper maintenance shall not be considered defects under the Warranty.
5. This Warranty applies only to systems for the care of poultry and livestock. Other applications in industry or commerce are not covered by this Warranty.

The Manufacturer shall not be liable for any consequential or special damage which any purchaser may suffer or claim to suffer as a result of any defect in the product. "Consequential" or special damages" as used herein include, but are not limited to, lost or damaged products or goods, costs of transportation, lost sales, lost orders, lost income, increased overhead, labor and incidental costs and operational inefficiencies.

THIS WARRANTY CONSTITUTES THE MANUFACTURER'S ENTIRE AND SOLE WARRANTY AND THIS MANUFACTURER EXPRESSLY DISCLAIMS ANY AND ALL OTHER WARRANTIES, INCLUDING, BUT NOT LIMITED TO, EXPRESS AND IMPLIED WARRANTIES AS TO MERCHANTABILITY, FITNESS FOR PARTICULAR PURPOSES SOLD AND DESCRIPTION OR QUALITY OF THE PRODUCT FURNISHED HEREUNDER.

Chore-Time Distributors are not authorized to modify or extend the terms and conditions of this Warranty in any manner or to offer or grant any other warranties for Chore-Time products in addition to those terms expressly stated above.

An officer of CTB, Inc. must authorize any exceptions to this Warranty in writing. The Manufacturer reserves the right to change models and specifications at any time without notice or obligation to improve previous models.

Effective 01/2002

Chore-Time Equipment  
A Division of CTB, Inc.  
P.O. Box 2000 \* Milford, Indiana 46542-2000 \* U.S.A.  
Phone (574) 658-4101 \* Fax (574) 658-4171  
Email: [ctb@ctbinc.com](mailto:ctb@ctbinc.com) \* Internet: <http://www.ctbinc.com>

# Table of Contents

<b>Topic</b>	<b>Page</b>	<b>User*</b>
<b>Chore-Time Warranty</b> .....	<b>2</b>	<b>C, D</b>
<b>Support Information</b> .....	<b>4</b>	<b>C, D</b>
<b>Distributor and Installer Information</b> .....	<b>4</b>	<b>C, D</b>
<b>Safety Information</b> .....	<b>5</b>	<b>C, I</b>
Safety–Alert Symbol. ....	5	
Signal Words. ....	5	
DANGER: Moving Auger .....	5	
DANGER: Electrical Hazard .....	5	
Auger Caution. ....	6	
<b>Introduction.</b> .....	<b>6</b>	<b>C, D</b>
<b>Installation.</b> .....	<b>7</b>	<b>I</b>
Circulating Feed Delivery System Wiring Diagram. ....	8	
Circulating Feed Delivery System Wiring Diagram. ....	9	
Circulating Feed Delivery System Wiring Diagram. ....	10	
<b>Extension Hopper Parts Diagram.</b> .....	<b>11</b>	<b>C, D</b>
<b>Extension Hopper Parts Listing</b> .....	<b>12</b>	<b>C, D</b>

**\*Legend: C = Customer (end user), D = Distributor (sales), I - Installer of equipment**

## Support Information

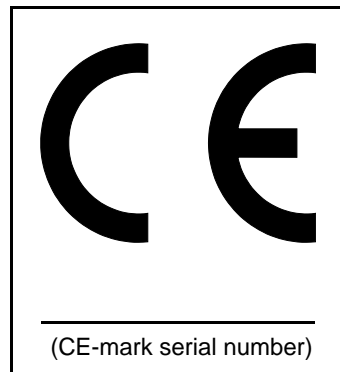
Using this equipment for any other purpose or in a way not within the operating recommendations specified in this manual will void the warranty and may cause personal injury.

This manual is designed to provide comprehensive planning, installation, operation, and parts listing information. The Table of Contents provides a convenient overview of the information in this manual. The Table of Contents also specifies which pages contain information for the sales personnel, installer, and consumer (end user).

Refer to Chore-Time Model 55/75/90/HMC Installation Manual for additional installation, operation, and parts listing information.

**IMPORTANT: CE stands for certified Europe.** It is a standard which equipment must meet or exceed in order to be sold in Europe. **CE** provides a benchmark for safety and manufacturing issues. **CE is required only on equipment sold in Europe.**

Chore-Time Equipment recognizes CE Mark and pursues compliance in all applicable products. *Fill in the CE-Mark serial number in the blank space provided for future reference.*



## Distributor and Installer Information

Please fill in the following information about your Product.  
Keep this manual in a clean, dry place for future reference.

**Distributor's Name** \_\_\_\_\_

**Distributor's Address** \_\_\_\_\_

**Distributor's Phone** \_\_\_\_\_ **Date of Purchase** \_\_\_\_\_

**Installer's Name** \_\_\_\_\_

**Installer's Address** \_\_\_\_\_

**Installer's Phone** \_\_\_\_\_ **Date of Installation** \_\_\_\_\_

**System Specifications** \_\_\_\_\_

\_\_\_\_\_  
\_\_\_\_\_

## Safety Information

**Caution, Warning and Danger Decals** have been placed on the equipment to warn of potentially dangerous situations. Care should be taken to keep this information intact and easy to read at all times. Replace missing or damaged safety signs.

Using the equipment for purposes other than specified in this manual may cause personal injury and or damage to the equipment.

### Safety–Alert Symbol

**This is a safety–alert symbol.** When you see this symbol on your equipment, be alert to the potential for personal injury. This equipment is designed to be installed and operated as safely as possible...however, hazards do exist.



### Signal Words

**Signal words** are used in conjunction with the safety–alert symbol to identify the severity of the warning.

**DANGER**..... indicates an imminently hazardous situation which, if not avoided, **WILL** result in death or serious injury.

**WARNING**..... indicates a potentially hazardous situation which, if not avoided, **COULD** result in death or serious injury.

**CAUTION**..... indicates a hazardous situation which, if not avoided, **MAY** result in minor or moderate injury.



**DANGER**



**WARNING**

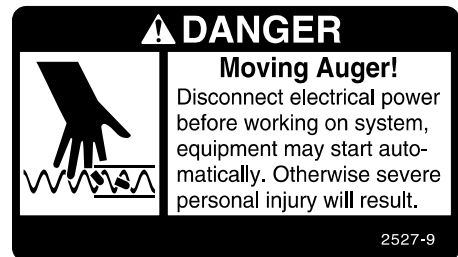


**CAUTION**

### DANGER: Moving Auger

This decal is placed on the Panel Weldment.

Severe personal injury will result, if the electrical power is not disconnected, prior to servicing the equipment.



### DANGER: Electrical Hazard

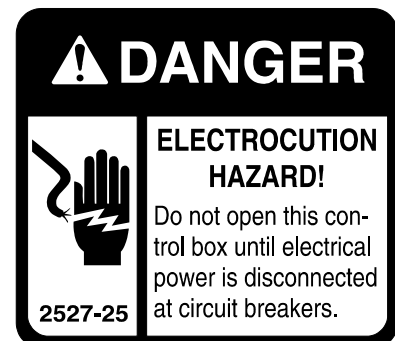
Disconnect electrical power before inspecting or servicing equipment unless maintenance instructions specifically state otherwise.

Ground all electrical equipment for safety.

All electrical wiring must be done by a qualified electrician in accordance with local and national electric codes.

Ground all non-current carrying metal parts to guard against electrical shock.

With the exception of motor overload protection, electrical disconnects and over current protection are not supplied with the equipment.





## Auger Caution

Use caution when working with the Auger—Springing auger may cause personal injury.

## Introduction

A Circulating Feed Delivery System makes it possible to regulate the amount of feed delivered to a particular drop tube, hopper, or drop feeder. The Circulating Feed Delivery System allows multiple feedings at random locations around the system without overloading or jamming the system with feed.

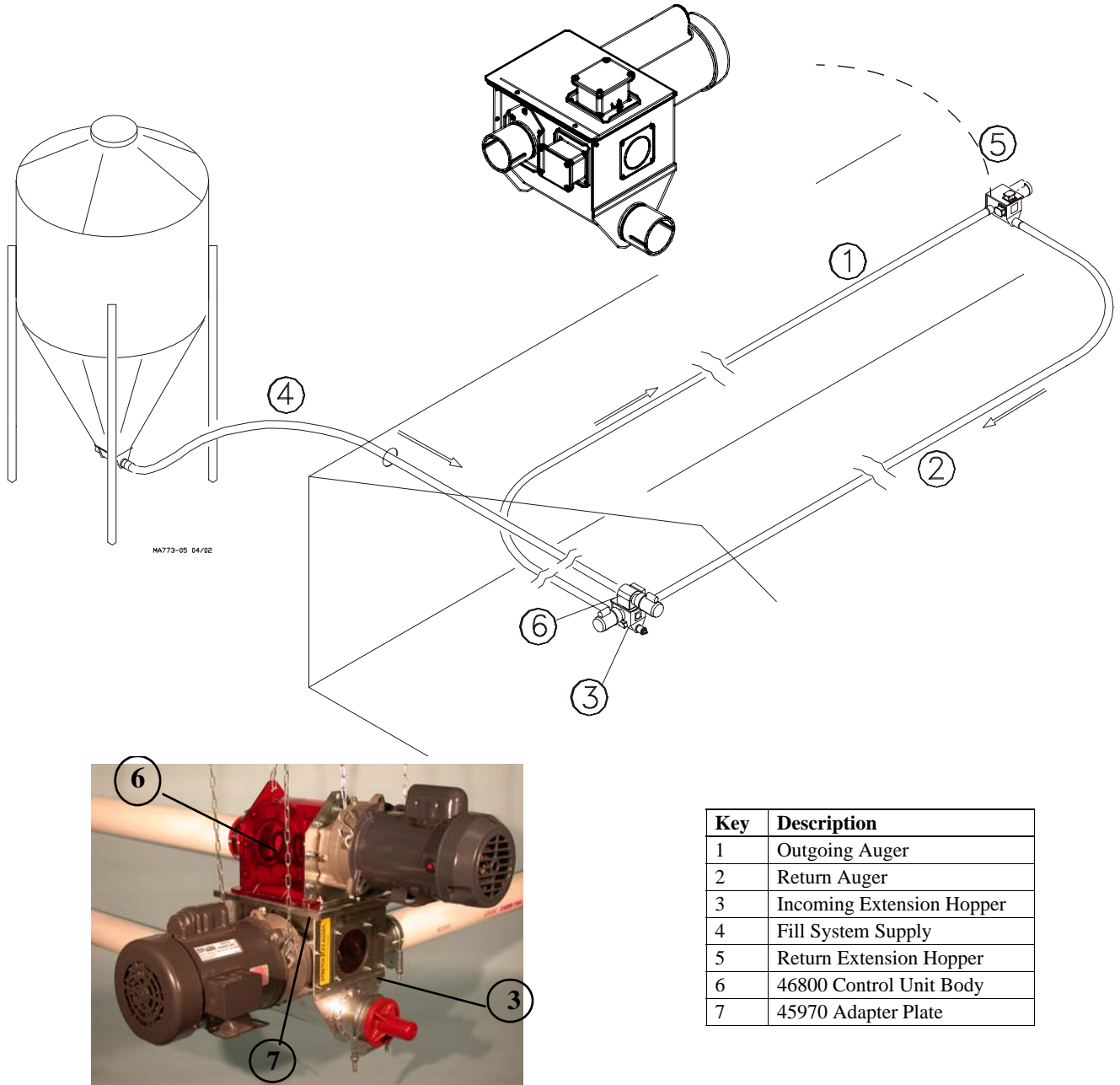
A proposed, typical plan for a Circulating Feed Delivery System is shown in **Figure 1**.

Many variations are possible using the Model 55, 75, 90, or HMC FLEX-AUGER.

Plan the system carefully before beginning installation.

# Installation

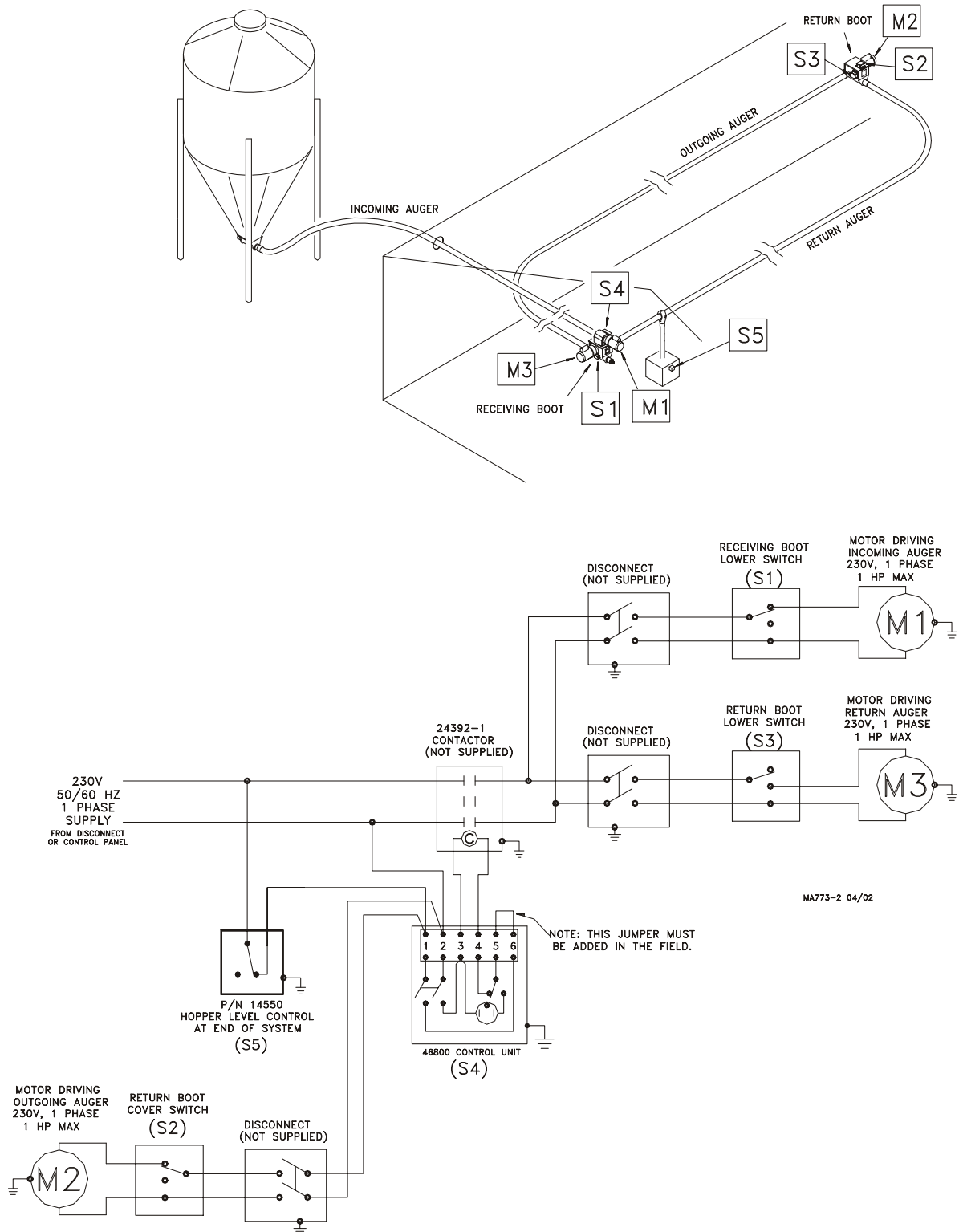
1. Install the Control Unit to deliver feed from bin to circulating system.
2. Remove the top cover of the Extension Hopper and replace with an Adapter Plate (part no. 45970). Fasten Control Unit to Transition Plate. See Detail "A".
3. Install auger tubes and elbows to reach opposite corner of circulating system
4. Install the Extension Hopper. See Detail "B".
5. Install auger tubes and elbows to connect the system to the first Extension Hopper.
6. Wire the system according to the appropriate wiring diagram in this instruction.



**Figure 1 Typical Circulating Feed Delivery System**

# Circulating Feed Delivery System Wiring Diagram

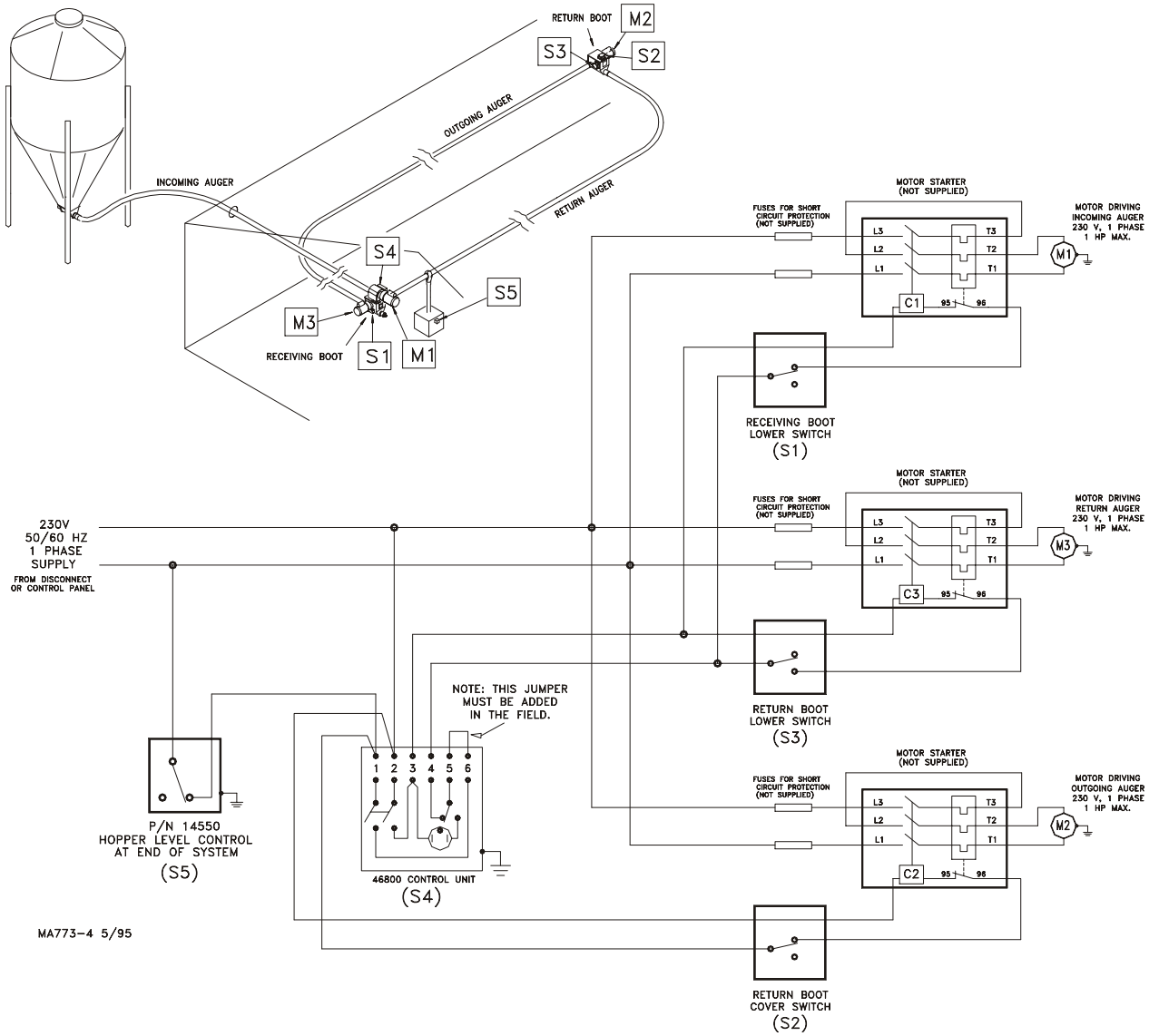
(Single Phase, 230V, 50/60 Hz, w/o Motor Starters)





# Circulating Feed Delivery System Wiring Diagram

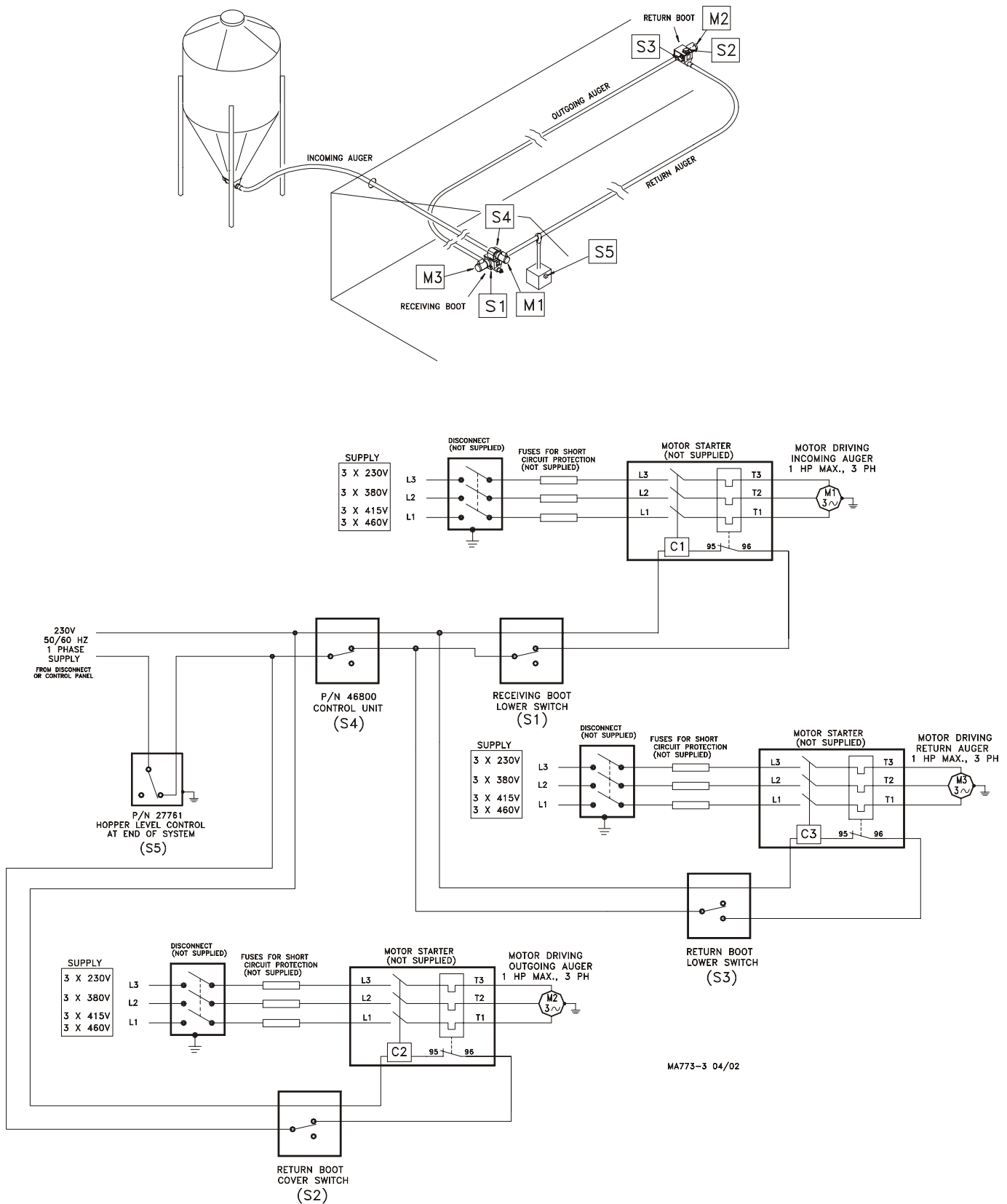
(Single Phase, 230V, 50/60 Hz, w/ Motor Starters)



MA773-4 5/95

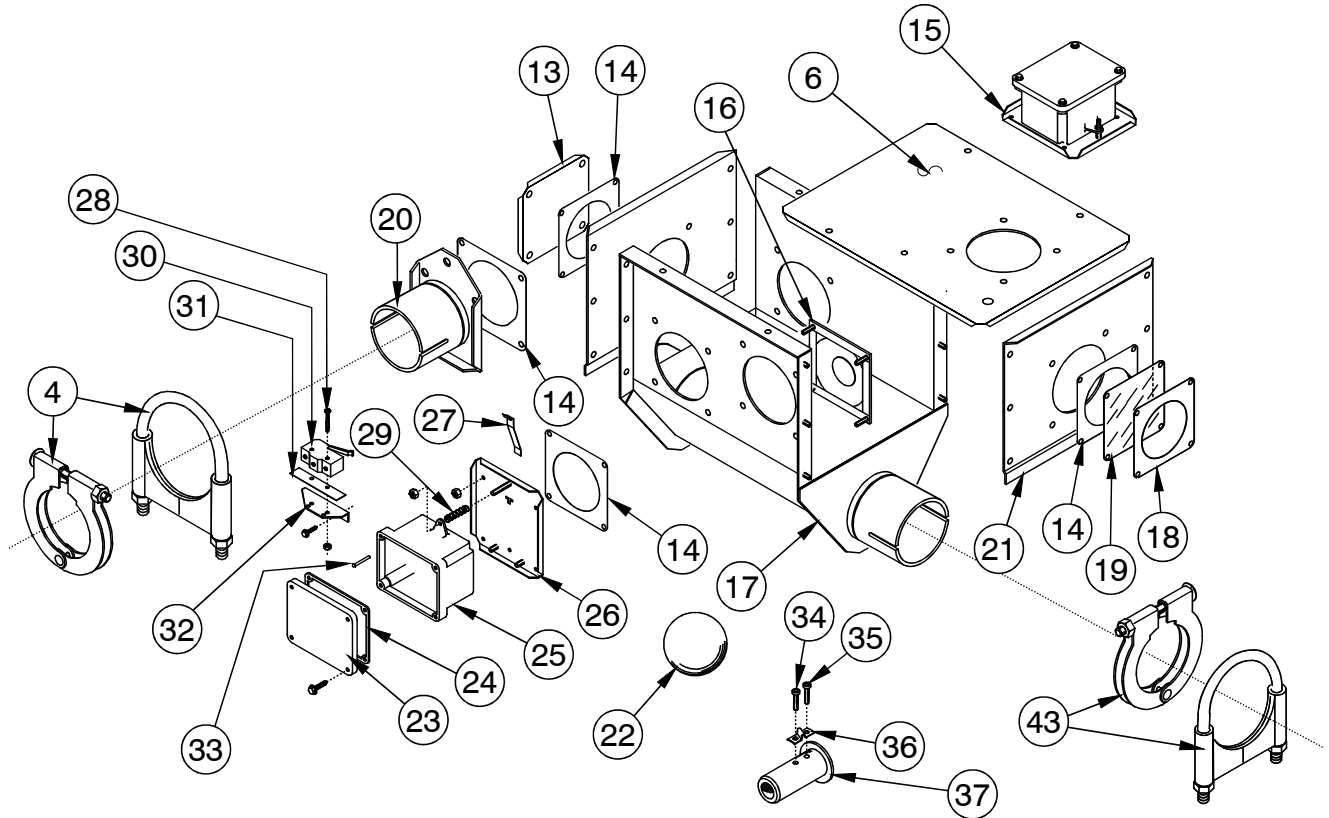
# Circulating Feed Delivery System Wiring Diagram

(Three Phase, 230/380/415/460V, 50/60 Hz)

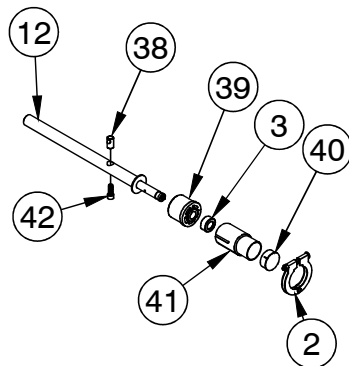


**This page left blank for notes.**

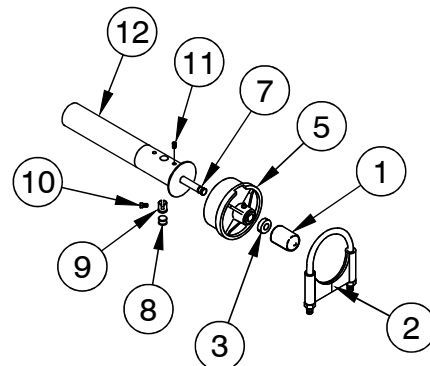
## Extension Hopper Parts Diagram



Model 55



Model 75, 90, & HMC



MA709-17 5/99

## Extension Hopper Parts Listing

Key	Description	Part No.
1*	Safety Cap (Model 75, 90, HMC)	29702
2	Tube Clamp Kit (Model 55) Tube Clamp Kit (Model 75) Tube Clamp Kit (Model 90, HMC)	29520 4141 6721
3*	5/8" Set Collar	1386
4	Tube Clamp Kit (Model 55) Tube Clamp Kit (Model 75) Tube Clamp Kit (Model 90, HMC)	35726 6515 6721
5*	Bearing Cap Assembly (Model 75) Bearing Cap Assembly (Model 90, HMC)	35440 34830
6***	Cover Assembly	7839
7*	Anchor Shaft (Model 75) Anchor Shaft (HMC) Anchor Shaft (Model 90)	37345 6839 6832
8*	Clamp Spacer (Model 90)	5009
9*	Clamp Pin (Model 75, 90, HMC)	4702
10*	5/16-18 x 1/2" Set Screw (Model 75, 90, HMC)	5095
11*	5/16-18 x 3/8" Set Screw (Model 75, 90, HMC)	1174
12*	Anchor Weldment (Model 55) (Model 75, HMC) (Model 90)	39410 6840 6833
13	Cover Plate	4878
14**	Seal	4873
15	Switch and Plate Assembly	7840
16	Diaphragm Assembly	7900
17	Boot Body Weld. (Model 55) Boot Body Weld. (Model 75) Boot Body Weld. (Model 90, HMC)	40168 7878 28881
18	Window Plate	7842
19	Window	7852
20	Tube Anchor Weldment (Model 55) Tube Anchor Weldment (Model 75) Tube Anchor Weldment (Model 90, HMC)	35531 6518 5069
21	Access Panel Assembly	7928
22	Cannonball (Model 55) Cannonball (Model 75, 90, HMC)	3621 3531
23**	Switch Box Cover	6776
24**	Gasket	6777

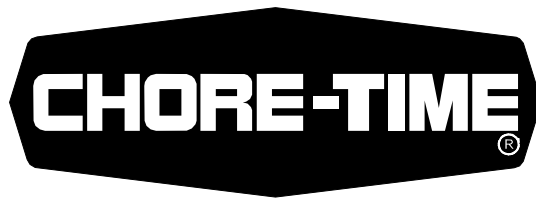
	Description	Part No.
25**	Switch Box	7841
26**	Switch Mounting Plate	7908
27**	Paddle	7896
28**	6-32 x 7/8" Pan Hd. Screw	1921
29**	Compression Spring	6972
30**	SPDT Actuator Switch	7114
31**	Switch Insulation	1907-5
32**	Switch Bracket	7068
33**	1/8 x 1" Rd Hd Rivet	8757
34	5/16-18 X 1/2 Socket Hd Screw	6850-3
35	5/16-18 x 2-1/4 Socket Hd Screw	6850-4
36	Anchor Block	7703
37	Driver Weldment (Model 75, HMC) (Model 90)	7704 7706
*38	Auger Clamp (Model 55)	39205
*39	Anchor Bearing (Model 55)	39407
40	Cap (Model 55)	29523
41	Stub Tube (Model 55)	4163
*42	Socket Head Screw (Model 55)	6850-7
43	Tube Clamp Kit (Model 55) Tube Clamp Kit (Model 75) Tube Clamp Kit (Model 90)	29515 6515 6721
Part Numbers for Complete Extension Hopper Kits		
Model 55 Kit		40170
Model 75 Kit		7944
Model 90 Kit		7869
Model HMC Kit		7849

\* These Anchor and Bearing components may be ordered as an assembly under the following Chore-Time part numbers:

Model 55: #39405  
Model 75: #37346  
Model 90: #35343  
Model HMC: #35344

\*\* These Switch and Plate components may be ordered as an assembly under Chore-Time part number #7840

\*\*\* The #7839 Cover Assembly includes items 14, 15, and 16 and the required hardware.



**MADE TO WORK.  
BUILT TO LAST.®**

**Contact your nearby Chore-Time distributor or representative for additional parts and information.**

**Chore-Time Poultry Production Systems, A Division of CTB, Inc.  
P.O. Box 2000 • Milford, Indiana 46542-2000 • U.S.A.  
Phone (574) 658-4101 • Fax (800) 333-4191  
E-Mail: [poultry@choretime.com](mailto:poultry@choretime.com) • Internet: [www.choretimepoultry.com](http://www.choretimepoultry.com)**

**Printed in the U.S.A.**