

## 24355 ULTRAFLO CONTROL UNIT SWITCH REPLACEMENT KIT

The 24355 ULTRAFLO CONTROL UNIT SWITCH REPLACEMENT KIT contains the necessary parts to convert a Fill System Control Unit using a Proximity Switch to use a Paddle Switch.

### INSTALLATION

Installing a Paddle Switch, in place of a Proximity Switch, can be completed through the Access Panel in the side of the Control Unit.

1. Refer to Figure 1. to identify parts that must be removed from existing Control Unit. Remove parts noted.
2. Install the Paddle Switch Assembly inside the Control Unit, as shown in Figure 2., using hardware supplied.
3. Fasten Switch Box to ceiling or other secure structure within reach of grey wire from Paddle Switch.
4. Wire Fill System Contactor Box to Switch Box, according to Wiring Diagram (See Figure 3).
5. Wire Paddle Switch to Switch Box, as shown in Wiring Diagram.
6. Fasten Cover on Switch Box using screws supplied.



### WARNING



1. DISCONNECT ELECTRICAL POWER BEFORE INSPECTING OR SERVICING EQUIPMENT UNLESS MAINTENANCE INSTRUCTIONS SPECIFICALLY STATE OTHERWISE.
2. KEEP HANDS AND TOOLS AWAY FROM THE EXPOSED AUGER
3. WIRE THE ELECTRICAL EQUIPMENT ACCORDING TO THE WIRING DIAGRAMS AND LOCAL CODES.
4. KEEP ALL COVERS AND GUARDS IN PLACE.
5. GROUND ALL ELECTRICAL EQUIPMENT

NOTE: PARTS IDENTIFIED WITH A STAR ARE TO BE REMOVED FROM CONTROL UNIT.

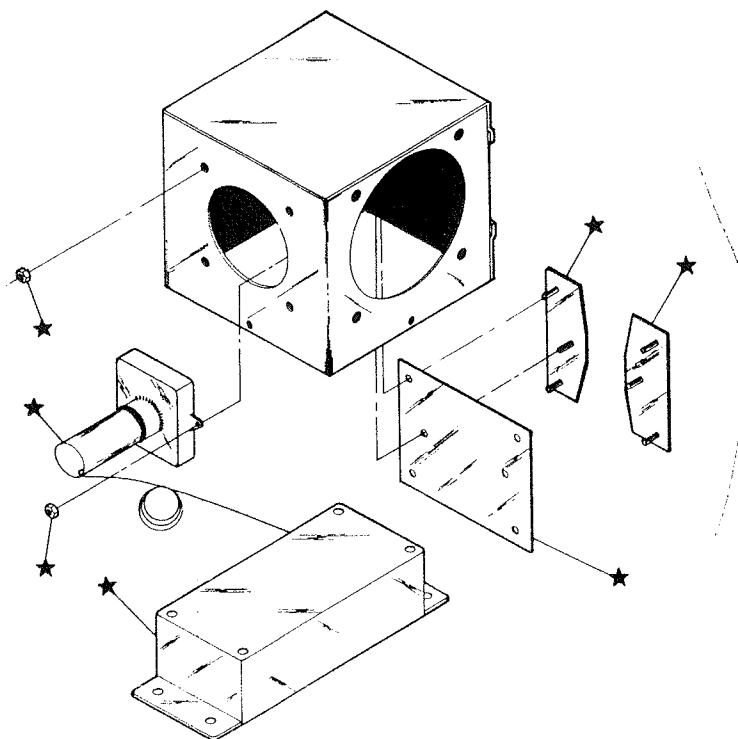


FIGURE 1.

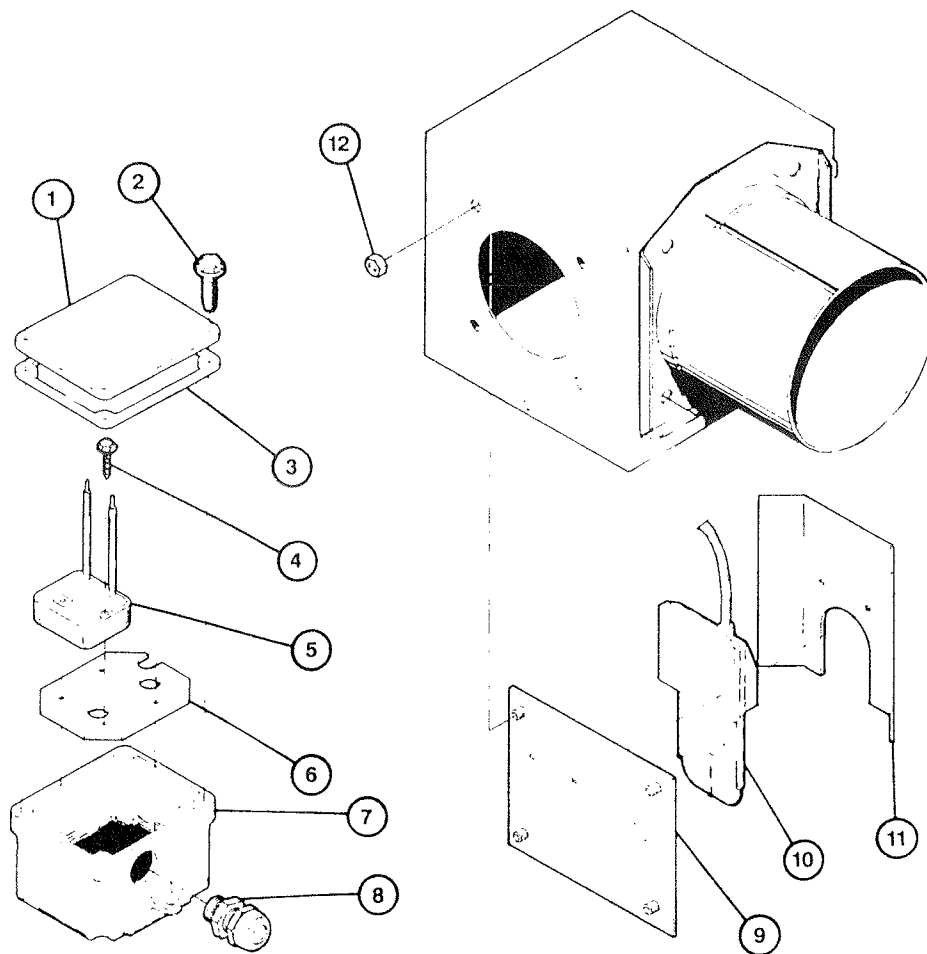


FIGURE 2.

## PARTS LIST

ITEM	DESCRIPTION	PART NO.
1	Switch Box Cover	6776
2	Twin Helix Screw	6980
3	Gasket	6777
4	#8x.375 Hex Hd Screw	5998
5	On-Delay Timer	24411
6	Box Plate	24321
7	Switch Box	24324
8*	Liquid Tight Connector	13477
9*	Switch Plate	24196
10*	Switch Assembly	14758
11*	Shield	24195
12	10-24 Hex Nut	313

\*These Parts can be ordered as a Kit under CHORE-TIME Part No. 24574.

The Complete change-over kit can be under CHORE-TIME Part No. 24355.

## WIRING DIAGRAM

**NOTE: TO INCREASE DELAY, TURN ADJUSTMENT CLOCKWISE; TO DECREASE, TURN COUNTERCLOCKWISE.**

**DELAY ADJUSTMENT RANGE:  
2 TO 30 SECONDS**

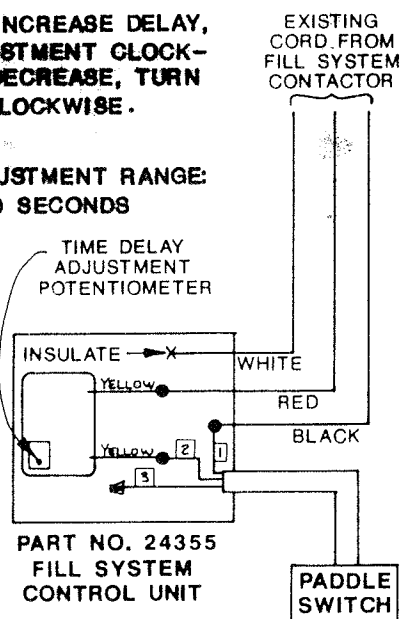


FIGURE 3.

Contact your nearby CHORE-TIME distributor or representative for additional information or parts.

Chore-Time Equipment, A Division of CTB, Inc.  
P.O. Box 2000, Milford, Indiana 46542-2000 U.S.A.

Printed in U.S.A.