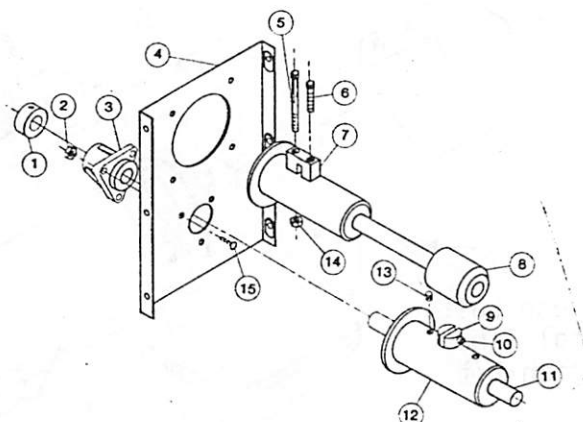


The #6769 Screener Conversion Kit consists of:

Key	Description	Part No.
1	5/8" Set Collar	1386
2	1/4-20 Hex Lock Nut	1269
3	Boot Bearing	2188
4	Front Bearing Plate Weldment	6609
5	1/4-20x2-3/4" Soc. Hd. Cap Screw	5083-6
6	1/4-20x1 Soc. Hd. Cap Screw	5083-1
7	Anchor Block	5056
8	Driver Assembly	6611
9	Clamp Pin	4702
10	5/16-18x3/8" Sq. Hd. Setscrew	5095
11	Anchor Shaft	6195
12	Anchor Tube Weldment	6163
13	5/16-18x3/8" Setscrew	1174
14	1/4-20 Hex Lock Nut	1269
15	1/4-20x5/8" Soc. Hd. Cap Screw	2432



REMOVAL OF GEAR DRIVE ASSEMBLY

1. Remove the auger cover, screens, plastic drop, and top cover. See Figure 1.
2. Unhook the top and bottom augers.
3. Remove the twelve 1/4-20x1/2" Hex. Head machine screws connecting the front and back bearing plates to the screener body. Save these screws. They will be used later for installing the Conversion Kit.
4. Remove and discard the Gear Drive Assembly parts as shown in Figure 1a.
2. Bolt the power unit to the Front Bearing Plate using the 5/16" bolts supplied with the power unit. In addition to these bolts, provide extra support for the motor, either by chain suspension from the eye loop on the gearhead or by anchoring the motor base plate to the building framework.
3. Install the Drive Assembly on the power unit shaft. Start the screws but leave the anchor blocks loose to accept the auger.
4. Attach the augers to the Power Unit driver and Anchor assembly.

INSTALLATION OF #6769 SCREENER CONVERSION KIT

1. Attach the new Front Bearing Plate Weldment to the screener body using the 1/4-20x1/2" Hex Head machine screws that were saved when removing the Gear Drive Assembly, see Figure 1b.
5. Replace the screens, auger cover, top cover and plastic drop.
6. Wire the motor according to the diagram in Figure 2.

FIGURE 1.

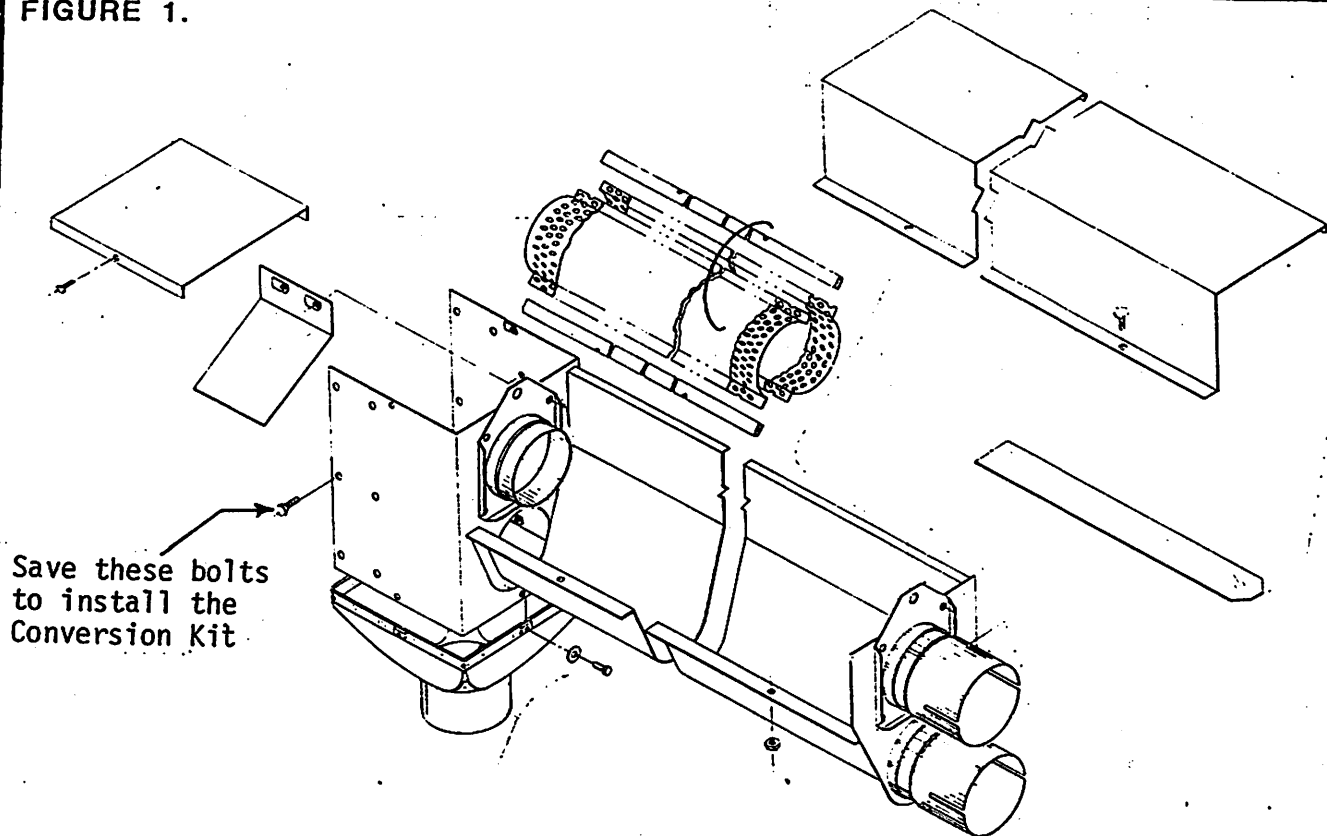


FIGURE 1a. Remove these Gear Drive Assembly parts and discard.

FIGURE 1b. Install the Screener Conversion Kit

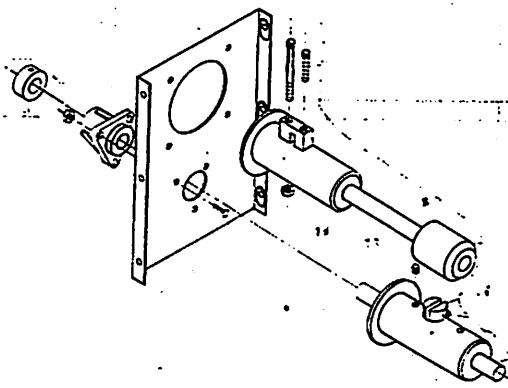
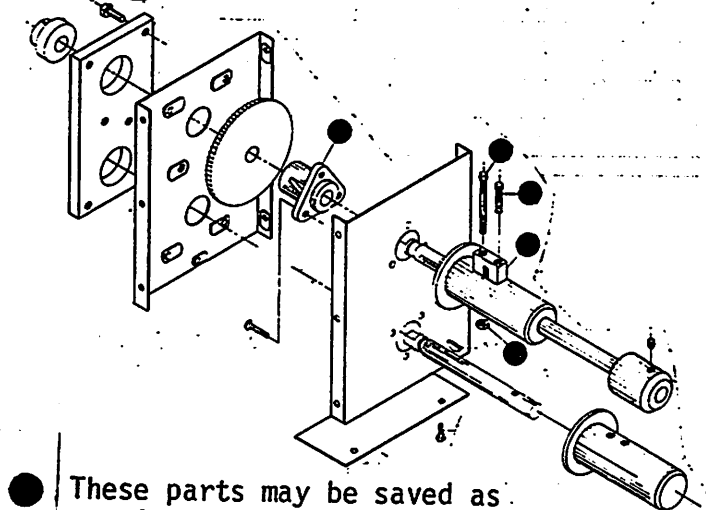


FIGURE-2. Wiring Diagram for connecting screener motor.

