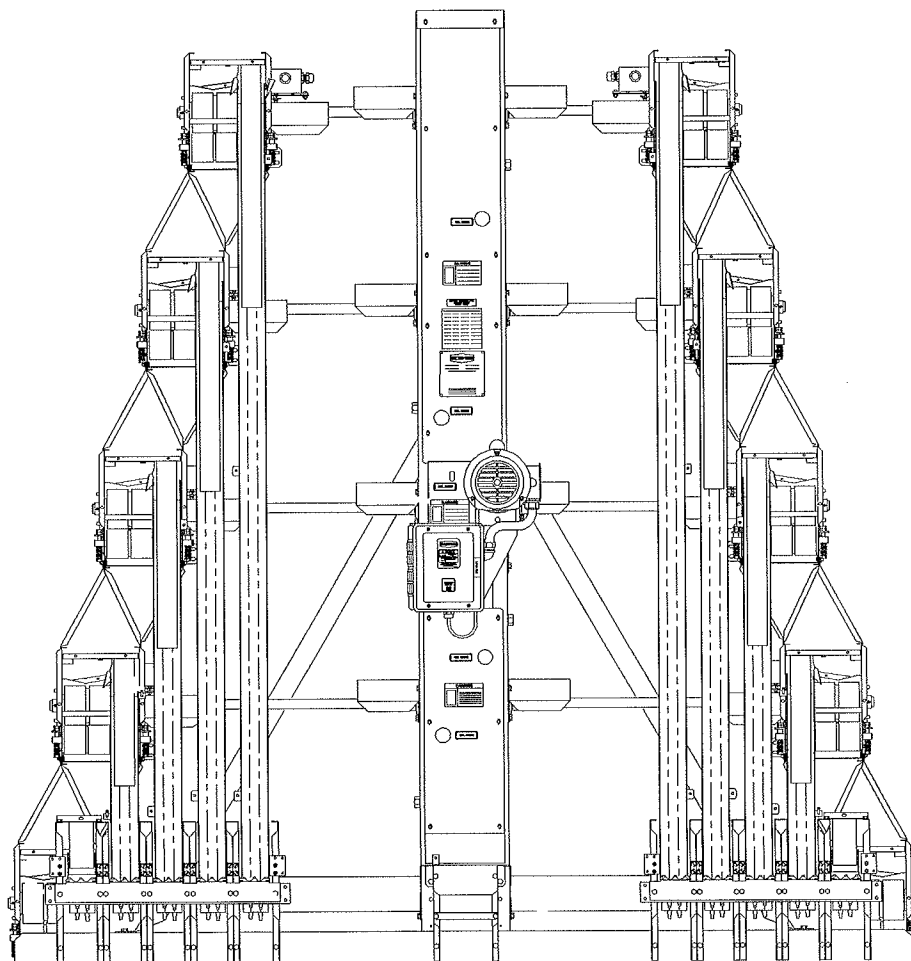


Dura-Cage Egg Collector
Installation Manual
for
3-Hi, 4-Hi, & 5-Hi Collectors



ME717.56 4/92

ME717E48-892

SAFETY INFORMATION

CHORE-TIME is concerned about the safety of its customers. Caution, Warning and Danger Decals have been placed on the equipment to warn of potentially dangerous situations. Care should be taken to keep this information intact and easy to read at all times. Replace missing or damaged safety signs.

Safety-Alert Symbol

This is a safety-alert symbol. When you see this symbol on your equipment, be alert to the potential for personal injury.



Signal Words

Signal words are used in conjunction with the safety-alert symbol to identify the severity of the warning.

DANGER.....identifies immediate hazards which **WILL** result in severe personal injury or death.

WARNING.....identifies hazards or unsafe practices which **COULD** result in severe personal injury or death.

CAUTIONidentifies hazards or unsafe practices which **COULD** result in minor personal injury or product or property damage.



DANGER



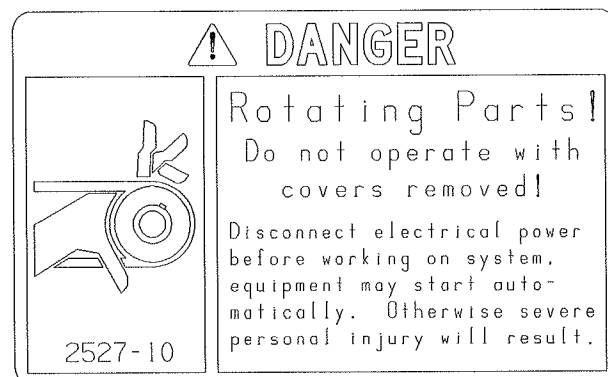
WARNING



CAUTION

DANGER--ROTATING PARTS

Severe personal injury will result, if the equipment is operated without covers properly installed.



HVB41.32 3/90

DANGER--ELECTRICAL HAZARD

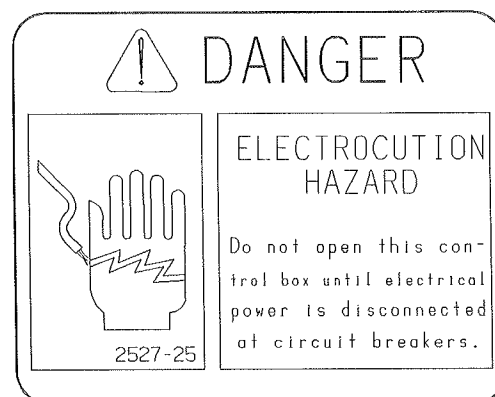
Disconnect electrical power before inspecting or servicing equipment unless maintenance instructions specifically state otherwise.

Ground all electrical equipment for safety.

All electrical wiring must be done by a qualified electrician in accordance with local and national electric codes.

Ground all non-current carrying metal parts to guard against electrical shock.

With the exception of motor overload protection, electrical disconnects and over current protection are not supplied with the equipment.



MA580.14 12/89

Table of Contents

<u>Topic</u>	<u>Page</u>
Safety Information	2
General Information.....	3
Planning the System.....	4 - 5
Installation of Plastic Egg Guides.....	6
Position the Egg Collectors.....	6
Install Egg Trays	7
Egg Tray Extension Installation.....	7
Install the Collector End Framing.....	7
Rear Return Framing Installation.....	8
Installing Rear Return Assemblies.....	8
Installation of Egg Belt	9
Egg Tray Brace Installation	10
Install Egg Sweep Braces and Cross Braces.....	10
Install Egg Sweeps	10
Rod Transfer Kit	10
Install the Controls	10
Three Phase Controls	10
Egg Counter Control Box	11
Recommendations and Guidelines/Operat.....	11
Maintenance Recommendations	11
Wiring Notes	11
System Wiring Diagram (Single Phase)	12 - 13
System Wiring Diagram (Three Phase)	14 - 15
3-Hi Counter Wiring Diagram	16
4-Hi Counter Wiring Diagram	17
5-Hi Counter Wiring Diagram	18
Egg Collection System Logic Diagram.	19
Parts Lists	20 - 46
Trouble Shooting Guide.....	47
Warranty.....	48

Thank-you for purchasing a Chore-Time DURA-CAGE™ Egg Collector!

This instruction will provide you with the necessary information for installing, wiring, and operating the collectors. Read it carefully prior to beginning the installation.

Wiring should be done by a qualified electrician, in accordance with local and national electrical codes.

||||| This bar denotes changes made to this instruction since the last printing. It will appear in the left or right hand border, near the revised information.

PLEASE read the installation instructions prior to beginning the installation. The collectors MUST be installed properly to insure proper operation of the cross conveyor equipment.

If necessary, refer to these Chore-Time Installation Manuals. They provide additional information necessary to assemble the various components into a complete egg gathering system.

Rod Conveyor InstallationME894

12" Cross Conveyor Installation ManualME626

18" & 24" Cross Conveyor Install. Manual.....ME836

DURA-CAGE Cage Installation ManualMC689

ULTRAFLO Cage Feeding SystemMC656

Please fill in the following information about your egg gathering system. Keep this manual in a clean, dry place for future reference.

Distributor's Name _____

Distributor's Address & Phone _____

Collector Specifications _____ **Date of Purchase** _____

System Specifications (model, length, tiers.) _____

Cross Conveying System Specifications _____

Planning the System

Dimensions are shown for the 3-Hi, 4-Hi, & 5-Hi DURA-CAGE Egg Collectors in Figures 1, 2, & 3. Use these dimensions when planning the collector and cross conveyor installation.

3-Hi & 4-Hi DURA-CAGE Egg Collectors require a minimum of 48" (1.72 m) to move the unit through a door of an existing building.

5-Hi DURA-CAGE Egg Collectors require a minimum of 68" (1.72 m) to move the unit through a door of an existing building.

DURA-CAGE Collectors require anchor spacing as shown in Figure 2. Note that this spacing is different than the required spacing for cage floor supports. Figure 3 shows placement and dimensional requirements for installing collectors to cage row.

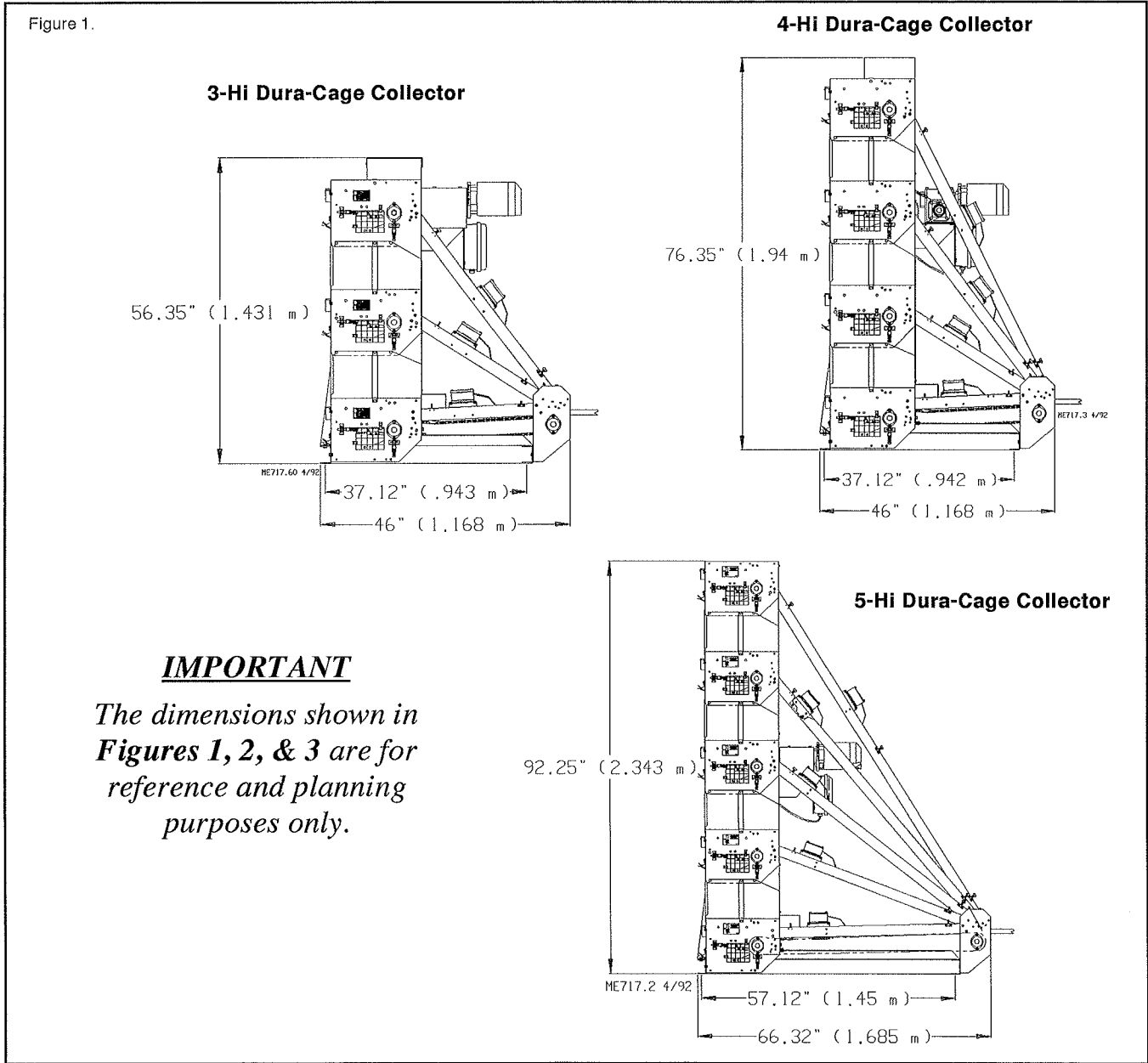
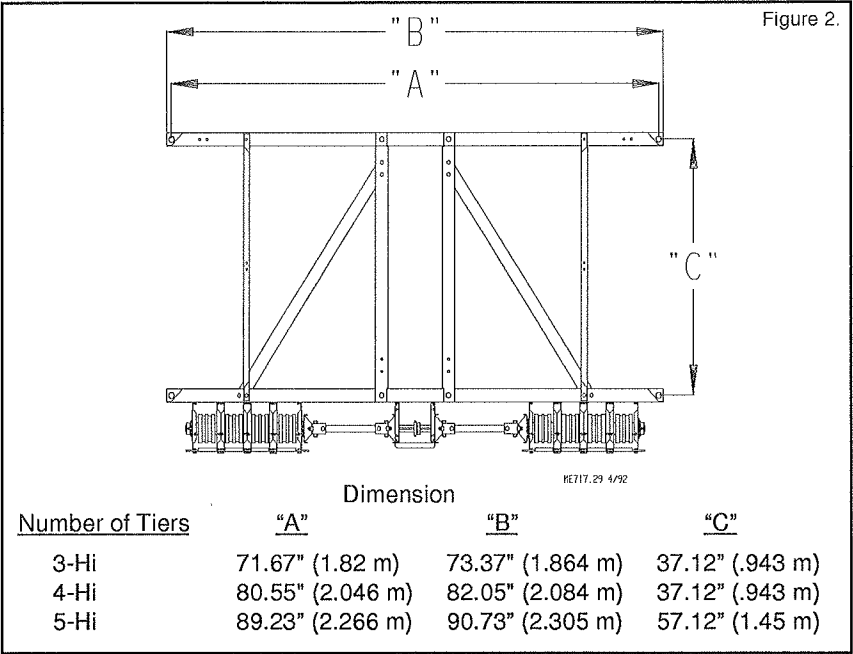
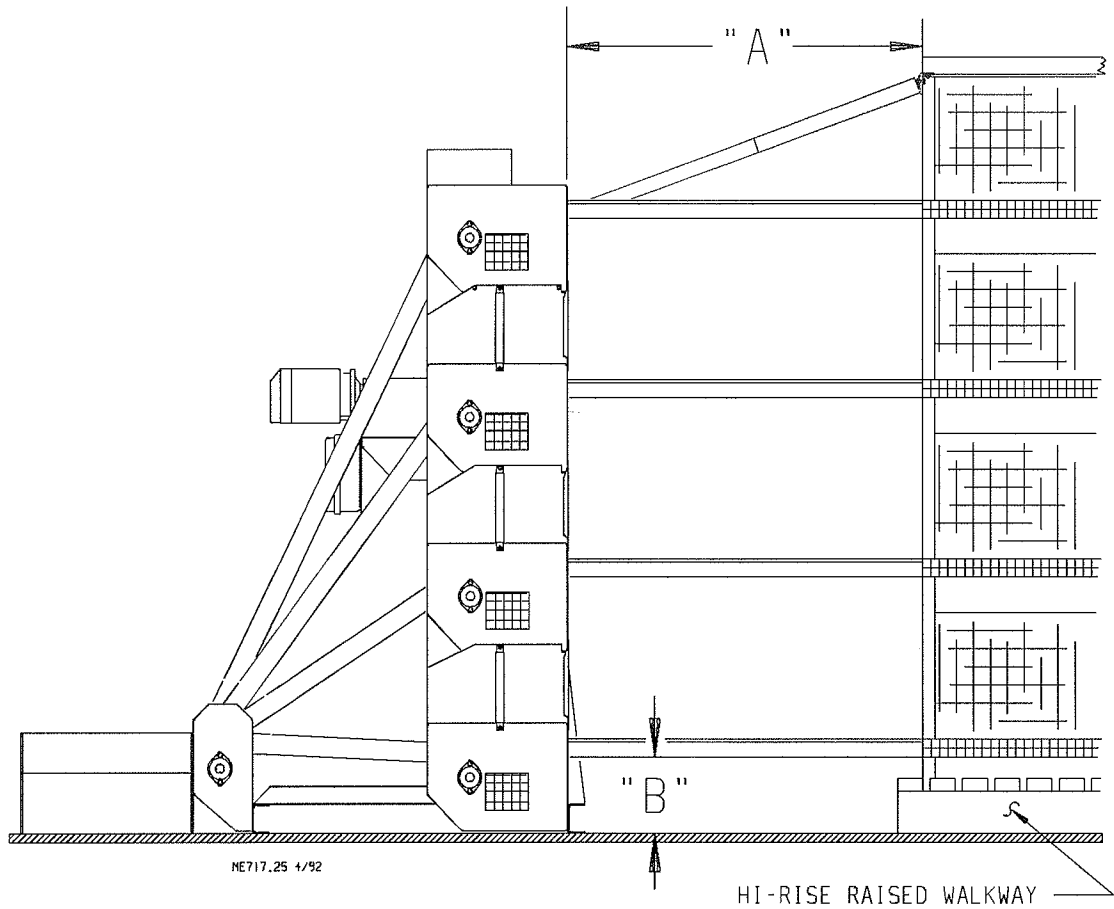


Figure 3.

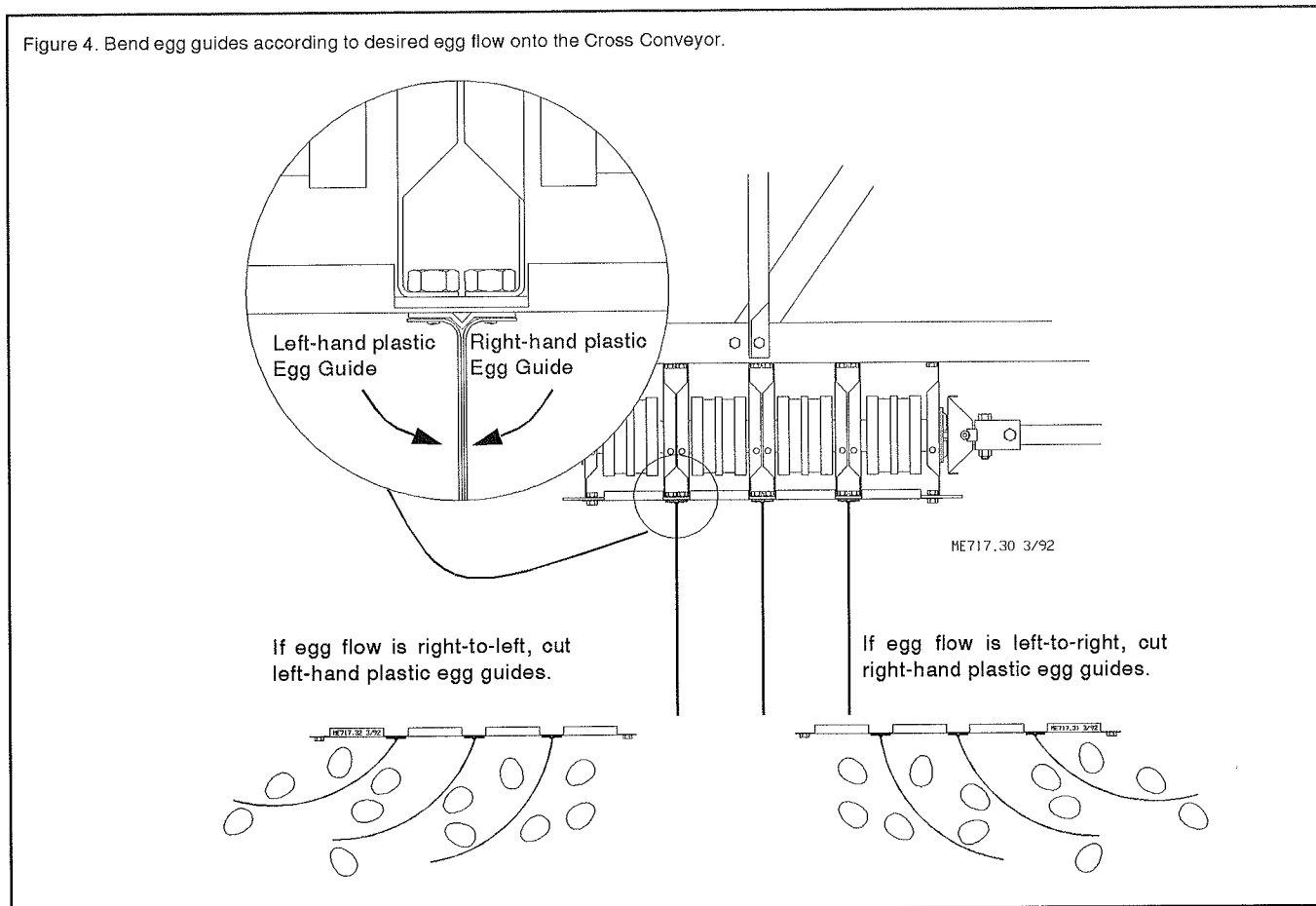
Collector Model (tiers, house style)	Dimension	
	"A"	"B"
3, 4, & 5-Hi, High Rise	42" (1.07 m)	8.5" (216 mm)
3, 4, & 5-Hi, Shallow	42" (1.07 m)	8.5" (216 mm)



IMPORTANT: Collector supporting surface must be 8.5" (216 mm) below the bottom of the Egg Tray.

Installation of the Plastic Egg Guides

Before installation of the collectors, prepare the egg guides on the front of the collector according to the intended direction of egg flow onto the cross conveyor. Each collector is manufactured with plastic egg guides installed for egg flow in either direction. Cut off plastic egg guides that **DO NOT POINT IN THE DIRECTION OF INTENDED EGG FLOW.** See Figure 4.



Position the Egg Collectors

Position each Egg Collector on the supports, in roughly its final position. Observe the collector dimensions and placement requirements carefully when positioning the unit.

Dimensions are shown in Figures 1, 2, and 3 for reference purposes in planning and installing the equipment.

IT IS IMPORTANT TO ALIGN THE FRONT OF THE COLLECTORS. Otherwise, installation of the cross conveyor equipment will be difficult.

Determine the desired location of the collector fronts, then snap a chalk line and use it to position the egg collectors.

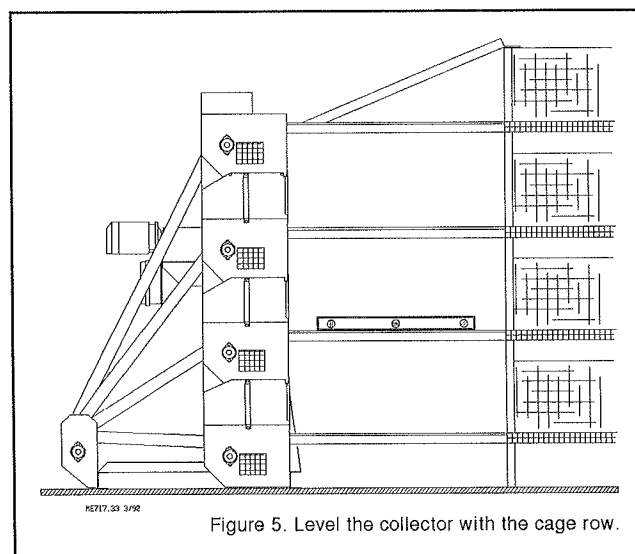
Optional alignment method: Install the “outside” collectors, first. Stretch a line between these collector fronts. Align the remainder of the collectors to this line.

Each collector must be centered with its cage row. This can be accomplished by stretching a line from the center wire of the cage egg tray (near the second “A” frame) to the Entrance Tray in the module. Mark this position and repeat procedure on the other side of the collector. Divide the difference between the two marks to center the collector as accurately as possible.

Temporarily install the bottom line egg trays and tray extensions on both sides of each collector. The egg trays are shipped in the egg collector assembly kit.

Use a carpenter’s level and shims (shims are provided in the assembly kit) to level each machine front-to-back and side-to-side. See Figure 5.

Drill holes for lag screws and anchor the collectors securely after they are level and in their final position.



Install Egg Trays

Install the egg trays and extensions connecting the cage row to the collector. Tabs on the egg trays hook under cage egg tray. See Figure 6. NOTE: Bend the tip of the egg tray slightly to "nose" it under the egg tray wire. Bend the tabs to hold egg tray to the cage wire.

Install Egg Tray Support Wires as shown in Figure 7.

Use 10-24 machine screws and hex nuts to attach the trays to the collector entrance. The Belt Riser attaches inside the Egg Tray on the aisle side, using two 10-24 machine screws. See Figure 8.

Fasten the egg sweep to the egg tray as shown in Figure 8. The sweeps help single file the eggs as they go into the de-escalator.

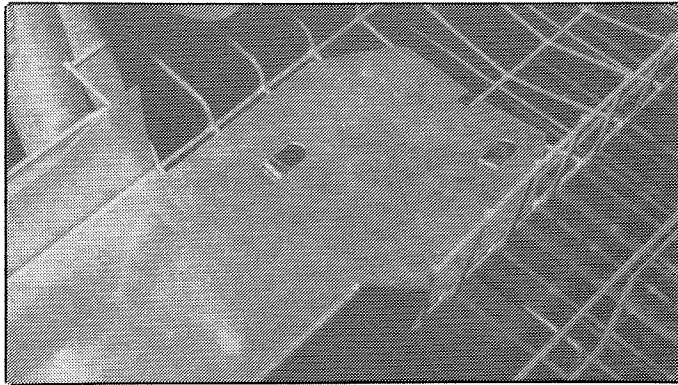


Figure 6. Egg Tray fastened to Egg Tray Wire.

Egg Tray Extension Installation

Egg Tray Extensions are used when the Egg Trays will not reach the de-escalator as shown in Figure 9.

1. Hook the Egg Tray to the cage Egg Tray, then fasten the Egg Tray Extension to the collector.
2. Lay the Egg Tray into the Egg Tray Extension.

Important: Do not bolt the Egg Tray and Egg Tray Extension together using the holes in the bottom of the tray. Instead, the trays should be bolted together up on the sides of the trays. Use four 10-24 truss head screws and nuts to secure the trays together (two at each joint.)

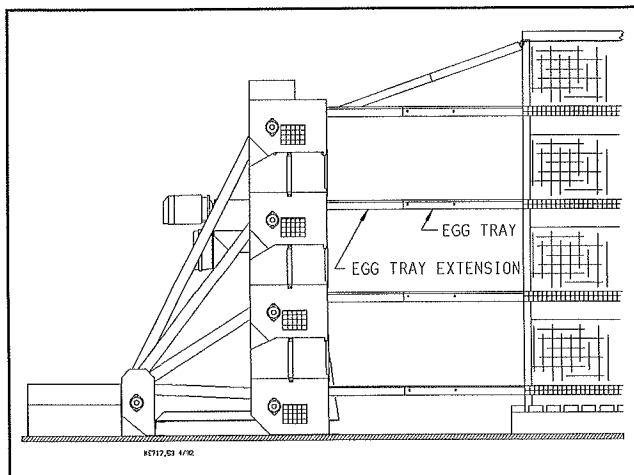


Figure 9. Egg Tray Extensions and Collector End Framing diagram.

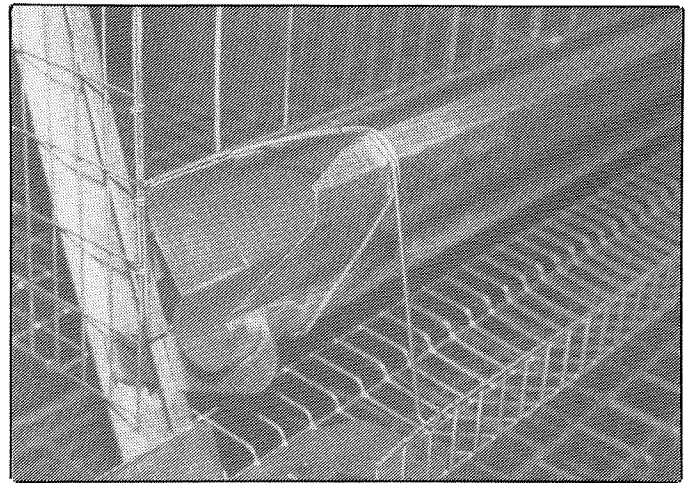


Figure 7. Egg Tray Support Wire.

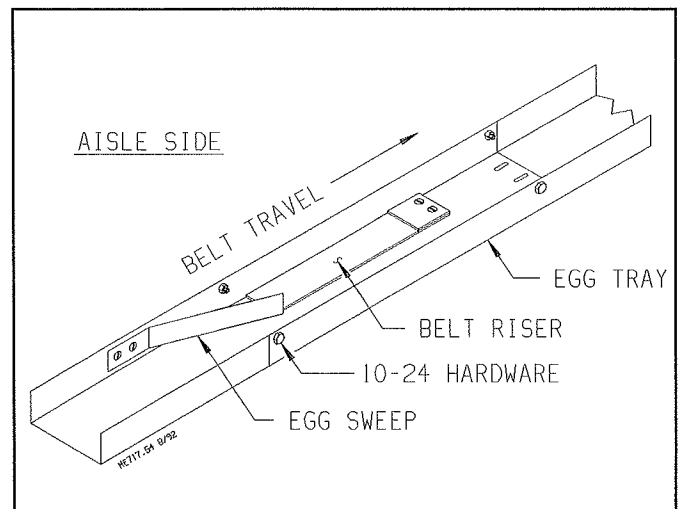
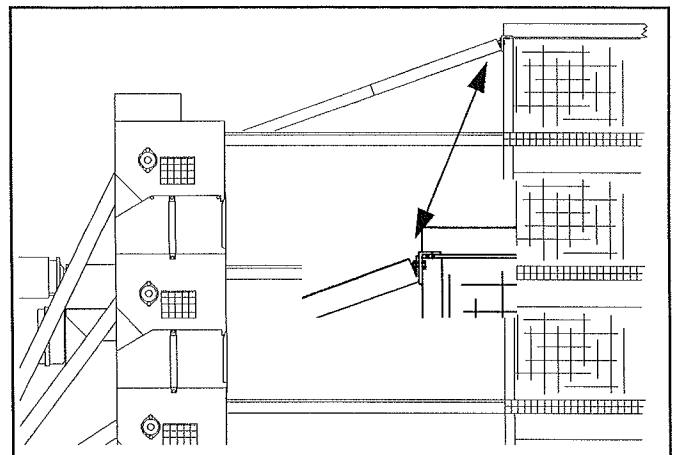


Figure 8. Egg Sweep Installed in Egg Tray.

Install the Collector End Framing

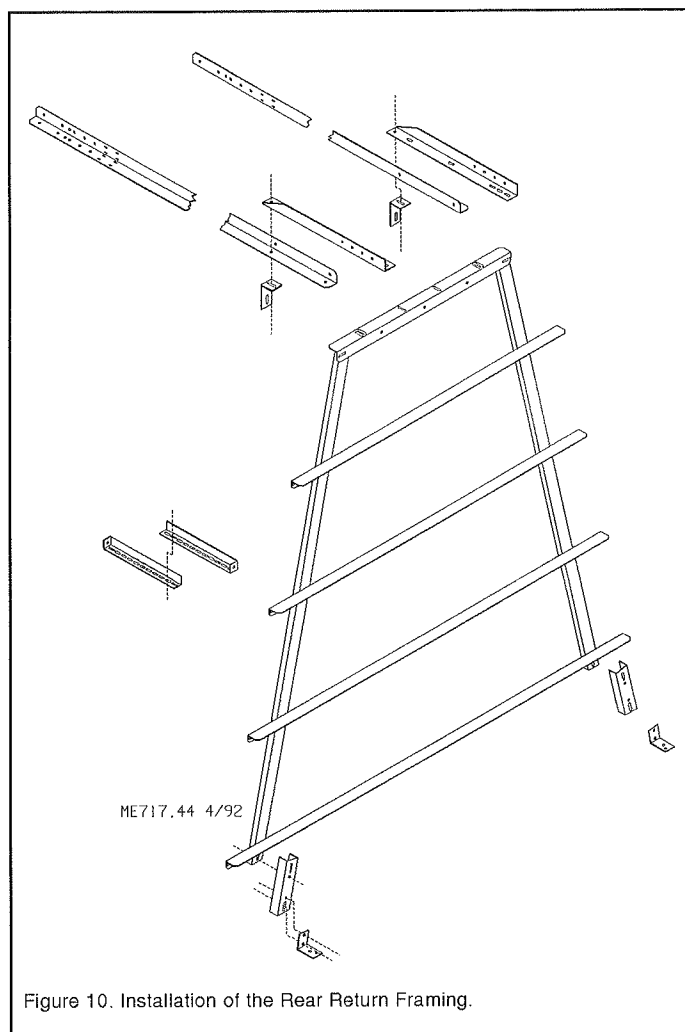
Installation of the collector end framing for the 3-Hi, 4-Hi, & 5-Hi Dura-Cage Collector is the same. Install the framing as shown in Figure 9. Place washers over the slots in the end framing during framing assembly.

Important: Use (2) bolts to fasten each set of braces together. This prevents braces from bending at the joints.



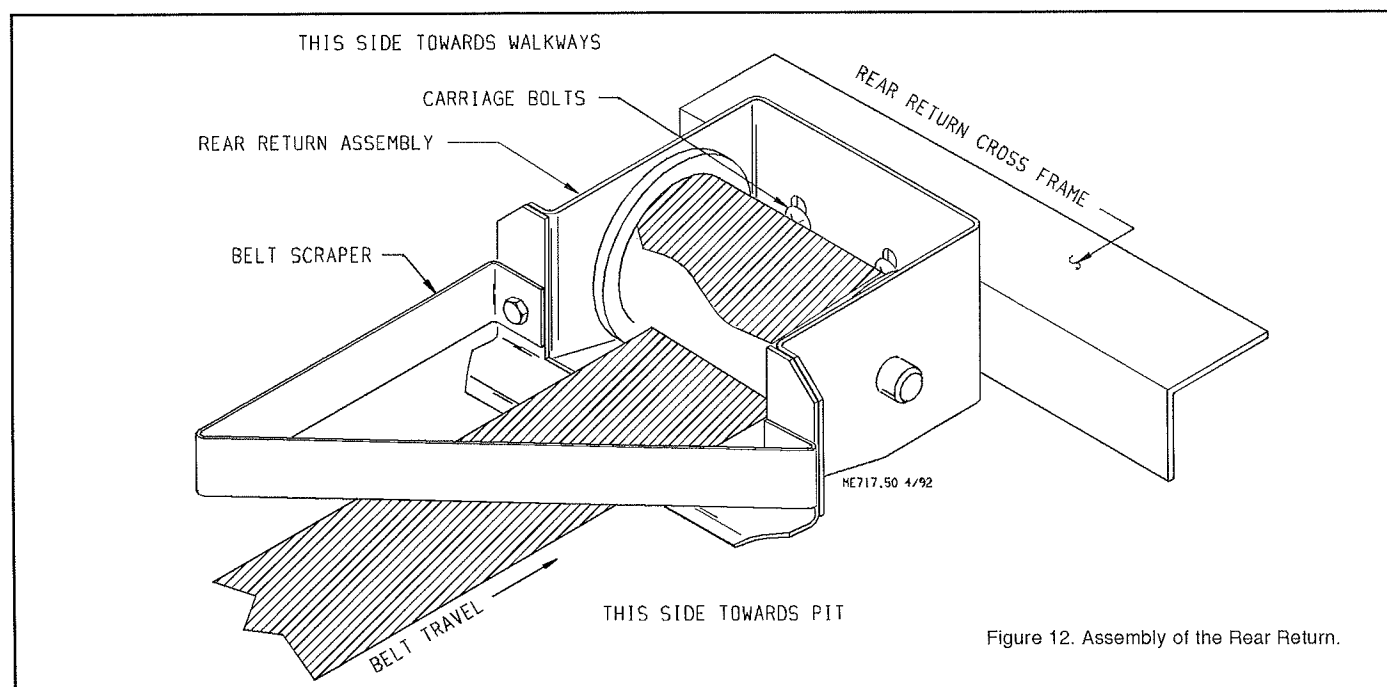
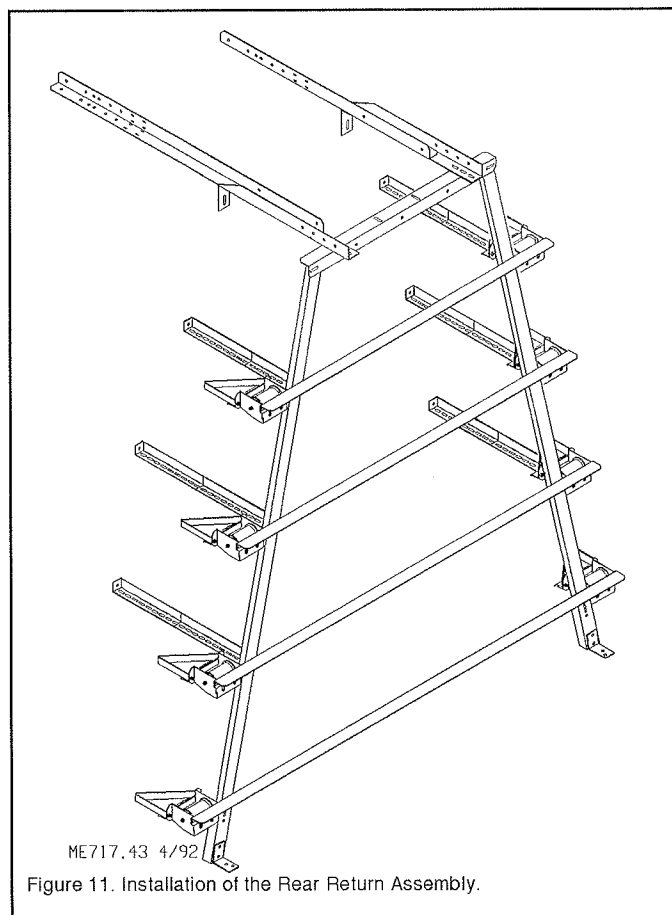
Rear Return Framing Installation

Assemble the rear return framing as shown in Figure 10. Attach the framing to the cage floor supports.



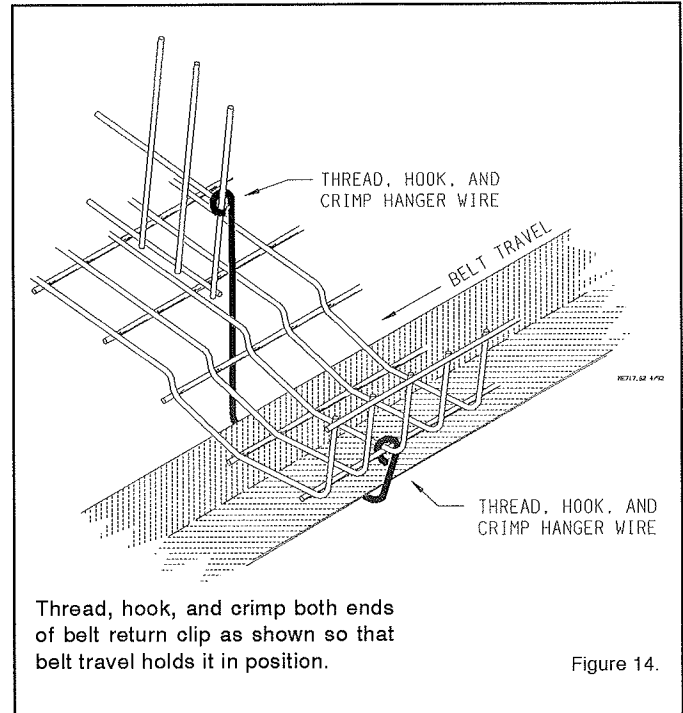
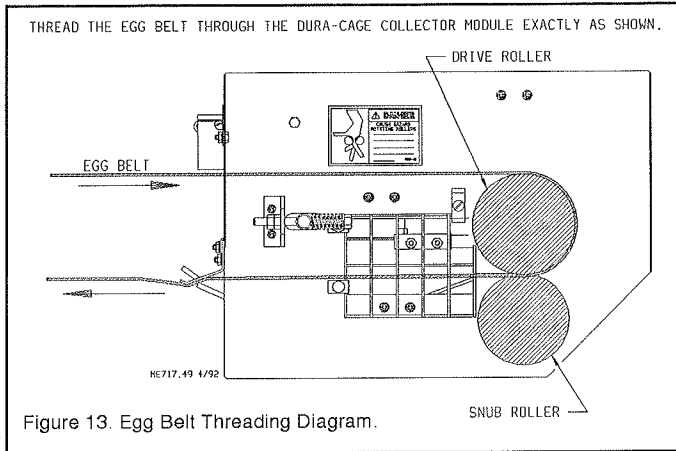
Installing Rear Return Assemblies

The Rear Returns are installed on the rear return framing as shown in Figure 11. The Rear Return Assembly should be installed so that the belt pulls up against the belt scraper as it comes out from beneath the egg tray. See Figure 12. Be sure to install the Rear Returns on the correct side of the cage row. The belt scrapers are angled so that the scrapings are pushed toward the pit area. See Figure 12.



Installation of the Egg Belt

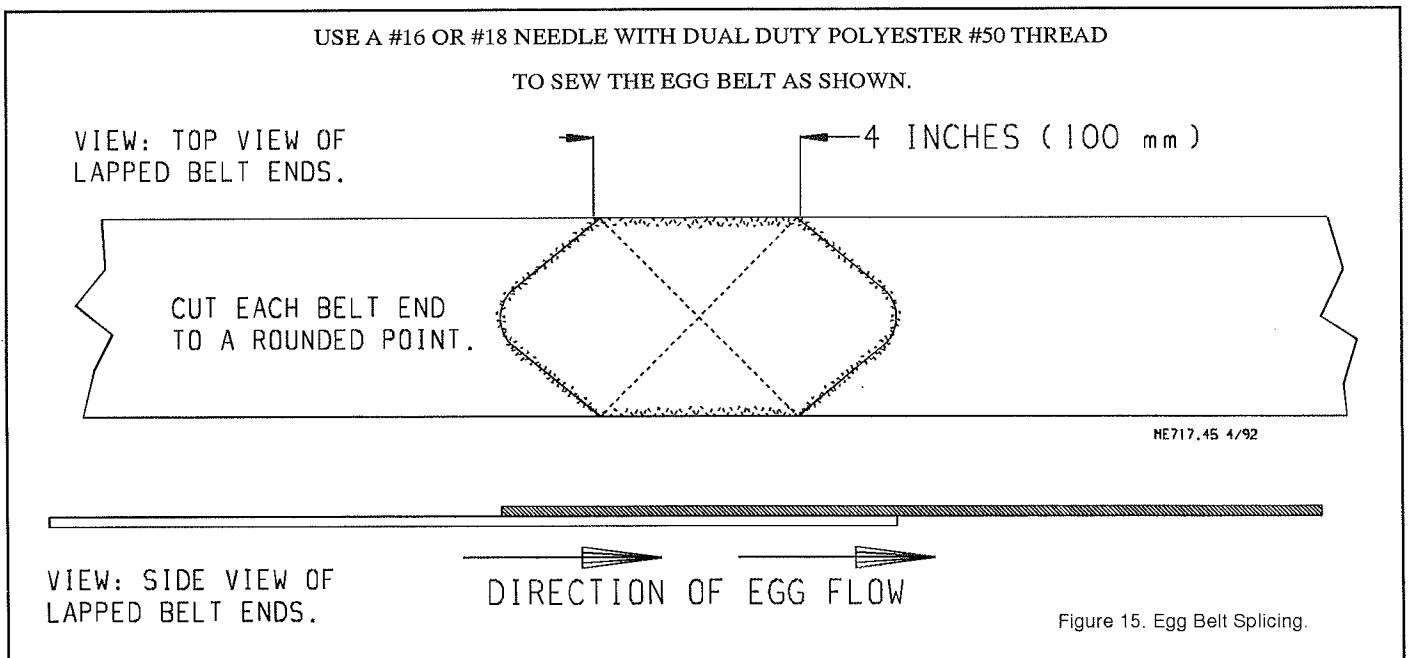
1. Unroll the egg belt in the egg tray. Thread the belt around the Rear Return Roller and pull the belt back to the collector beneath the egg tray.
2. Thread the egg belt through the collector module, as shown in Figure 13.



3. Install Belt Return Clips on all cage rows after the belt is installed. Install a Belt Return Clip ONE CAGE PARTITION FROM EACH END OF THE CAGE ROW; then, beginning at the Collector end of the line, install a clip at the first partition past each cage floor support. Install Belt return Clips on all cage rows. Belt return clips should be installed so that belt travel holds it in position. See Figure 14 for proper installation.

NOTE: Do not install Belt Return Clips below a watering cup, instead, install it on the next partition.

4. Stretch the belt by hand. The belt should be stretched 1/2% of the belt length, or 6" (152 mm) of stretch per 100' (30 m) of belt.
5. Cut and sew the belt.
 - A. Trim the belt to a rounded point. See Figure 15.
 - B. Overlap the ends of the belt 4" (100 mm), as shown in Figure 15. There must be four inches (100 mm) of FULL WIDTH BELT OVERLAP.
 - C. Sew the belt. Be sure the two ends are in line so that the belt will not be crooked. BE SURE THE ENDS OF THE BELT ARE COMPLETELY STITCHED DOWN!
 - D. Apply PVC glue over the stitched down ends of the belt to help prevent the belt from unraveling.



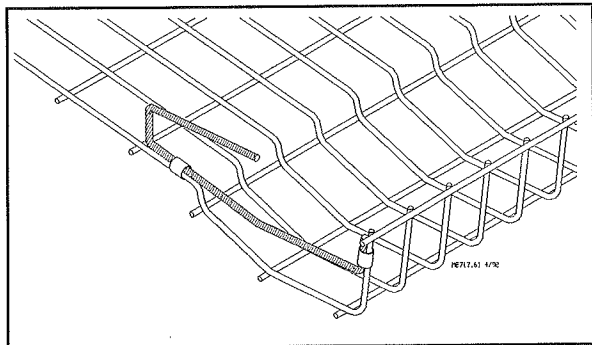


Figure 16. Egg Tray Brace Installation.

Install Egg Sweep Braces and Egg Sweep Cross Braces

Install four egg sweep braces and two cross braces on each collector, as shown in Figures 17 and 18. Use hardware as shown.

Install the Egg Sweeps

Install plastic egg sweeps as shown in Figure 17. Only attach to the cross brace at the two locations shown. The bottom of the plastic egg sweeps should be 5/8" (15 mm) above the cross conveyor.

Rod Transfer Kit

The Rod Transfer Kit is used with the Dura-Cage Collector when a rod-type cross conveyor is used.

See the instructions packed with the Rod Transfer Kit for proper installation.

Install the Controls

Cross conveyor system and flow control installation is covered in the applicable installation manual. The manual also contains information for installation and field wiring of egg collector controls. All electrical wiring should be done by a qualified electrician in accordance with local and National Electrical Codes. Ground all electrical equipment.

Three Phase Controls

On collectors with three phase motors, the motor voltage and motor rotation must be set by the electrician at the job site.

Egg Tray Brace Installation

Install an Egg Tray Brace at the rear return end of the cage egg tray. Use extra ferrules to attach the brace as shown in Figure 16.

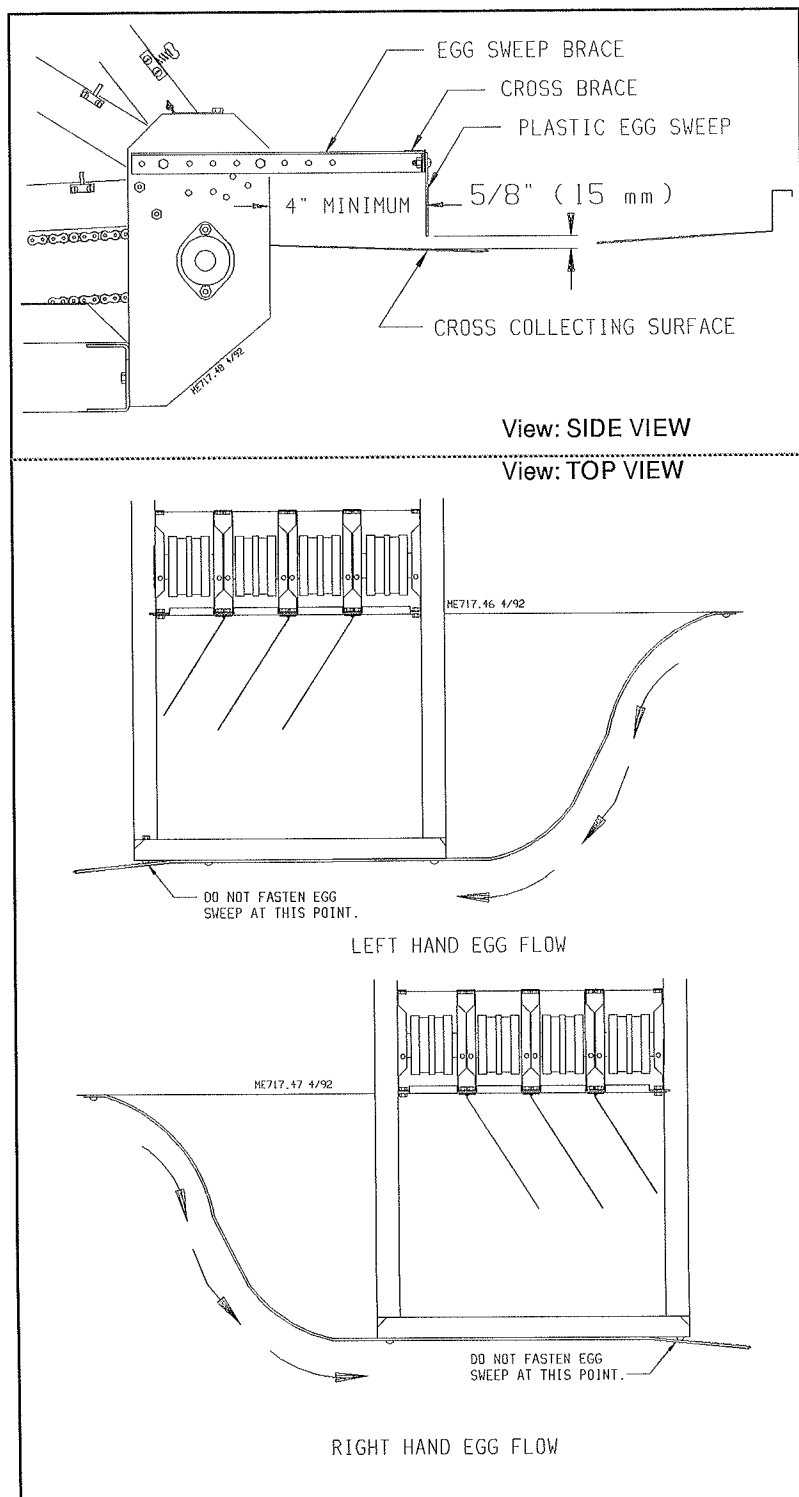


Figure 17. Install Cross Brace at each de-escalator

Egg Counter Control Box

Use water-tight connectors on the Counter Junction Box and Counter Box Assembly. The reliability of the counters depends on a dry, clean environment inside the boxes. Note: The warranty is voided if water tight connectors are not used.

3-Hi DC Collectors require a 20 gauge, 7-conductor cable that meets local and national electric codes is recommend to connect the Counter Junction Box to the Counter Box Assembly.

4-Hi DC Collectors require a 20 gauge, 9-conductor cable that meets local and national electric codes is recommend to connect the Counter Junction Box to the Counter Box Assembly.

5-Hi DC Collectors require 20 gauge, 5-conductor & 6-conductor cables that meets local and national electric codes, to connect the Counter Junction Box to the Counter Box Assembly.

CAUTION When securing the electrical wires to the building or equipment, do not:

- kink the wire
- place it against sharp objects
- short the wire by installing metal straps or staples so that they cut the insulation
- route the wires anywhere the birds can reach them.

The counters may be reset by pressing the red button on the front of each counter. **DO NOT RESET THE COUNTER WHILE THE COLLECTOR IS OPERATING.**

Use only Dura-cell ("D" size) batteries for replacement of the power supply. Replace the batteries in the position indicated by the decal.

Recommendations & Guidelines For Operation

The control switch for the egg collector and cross conveyor power units has three positions; OFF, MANUAL, and REMOTE.

Manual operation permits each collector to operate independently. This is used most commonly for servicing the equipment.

Remote operation ties the egg collectors and cross conveyor equipment into the master control panel. Individual collectors and the cross conveyor can start and stop as needed. Flow controls installed on the cross conveyor tray control collector operation according to the volume of eggs.

Operation of the cross conveyor is controlled by the master switch on the Master Control Panel.

Maintenance Recommendations

! IMPORTANT!

1. Ground all electrical equipment.
2. All electrical wiring should be done by a qualified electrician in accordance with Local and National Electrical Codes.
3. Use wire of adequate size.
4. Keep all guards and shields in place.
5. Disconnect electrical power before inspecting or servicing the equipment!

DAILY MAINTENANCE

1. Before operating the equipment, check all lines to be sure nothing is blocking the egg belts.
2. Observe the Rear Returns while making daily rounds. All belts should track straight through the Rear Returns. Adjust if necessary.
3. Turn each machine to "Manual" switch position to check for blown fuse/the fuse is blown if the indicator lights.
4. Check flow controls for satisfactory operation.
5. Clean build-up from around transition pieces.

WEEKLY MAINTENANCE

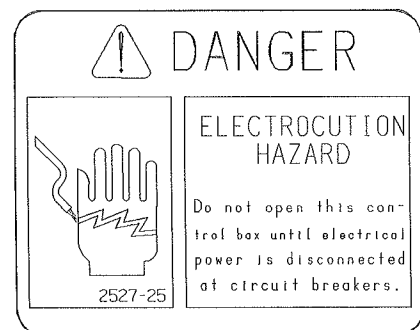
1. Check Egg Collector De-Escalators for tracking and alignment. Adjust if necessary.
2. Clean the collector carefully. Do not allow dirt or feathers to build up on the collector equipment.

MONTHLY MAINTENANCE

1. Check for dirt build-up around the collector power unit. Clean as needed.
2. Check for dirt build-up under the cross conveyor belt in front of each machine. Clean as needed.
3. Clean idler end framing.
4. Oil drive chains on the collector.
5. Adjusting the Tracking. If an Egg Belt tracks incorrectly, loosen the bolts holding the bearing in place on the side of the Modules. Since the belt will track in the direction it's tightest, adjust the bearing accordingly and tighten bearing bolts.

Wiring Notes-

1. All electrical wiring must be done by a qualified electrician in accordance with local and national electrical codes.
2. Ground all non-current-carrying metal parts to guard against electrical shock.
3. Use 14 gauge wire for all 24 volt control circuit wiring.
4. If Flow Controls are NOT used, (3) 14 gauge wires (A1, A3, A4) are required between the Collector Master Control and each Collector Control Unit.
5. If Flow Controls are used, (4) 14 gauge wires (A1, A3, A4, A5) are required between the Collector Master Control and each Collector Control Unit.
6. Two 14 gauge wires (CC, A1) are required between the Collector Master Control and the Cross Conveyor Control Units. If the Cross Conveyor Control Units are less than 750 feet (228 m) from the service entrance. If the Cross Conveyor Control Unit is more than 750 feet (228 m) from the service entrance, use one pair of 14 gauge wires for each control unit.

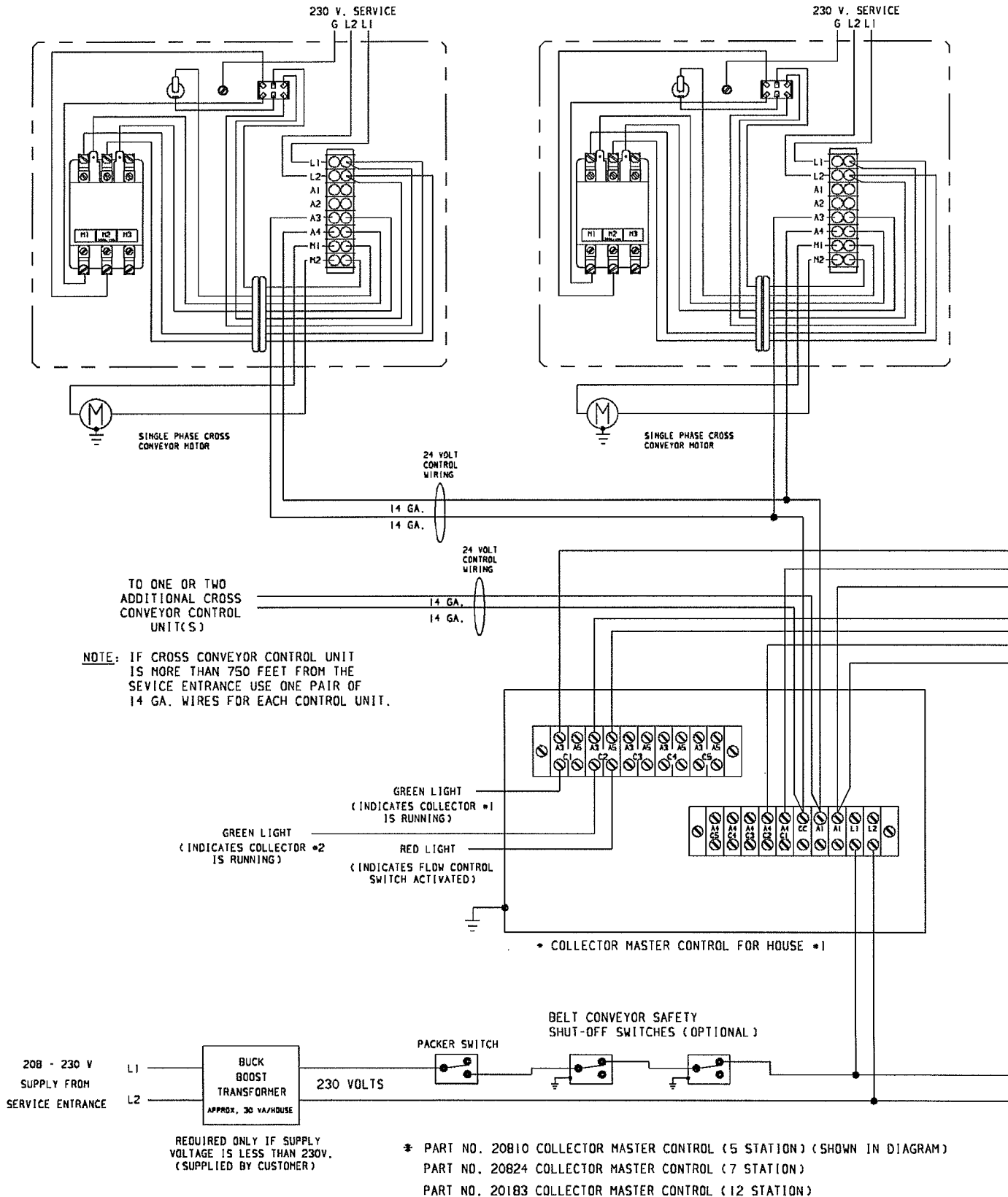


System Wiring Diagram (Single-Phase)

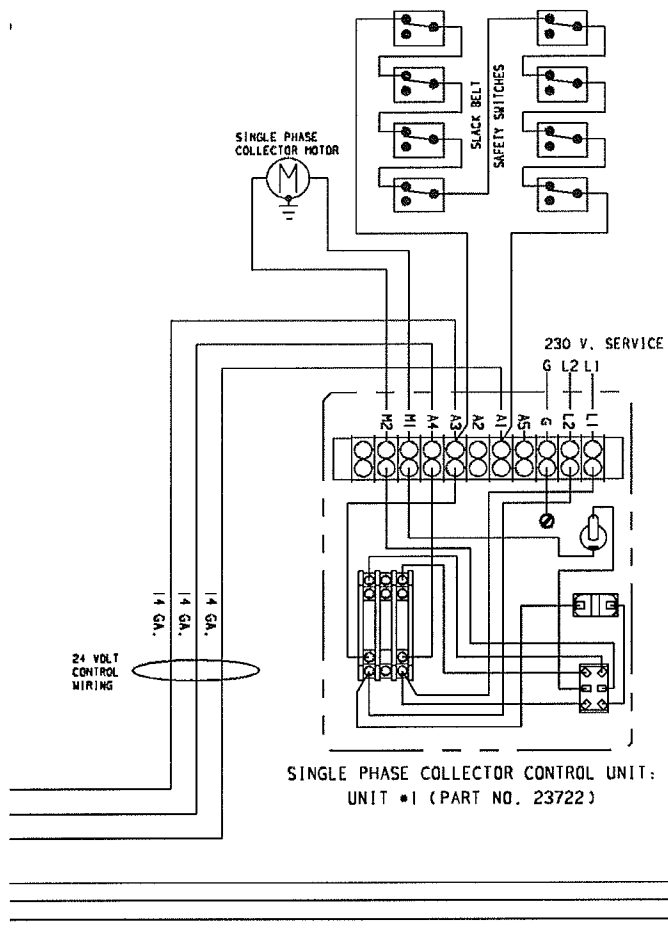
IMPORTANT: SEE WIRING NOTES ON PAGE 11 BEFORE WIRING THE SYSTEM.

SINGLE PHASE CROSS CONVEYOR CONTROL UNIT: PART NO. 24835

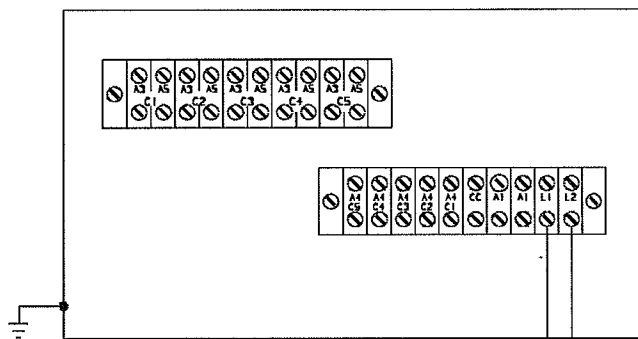
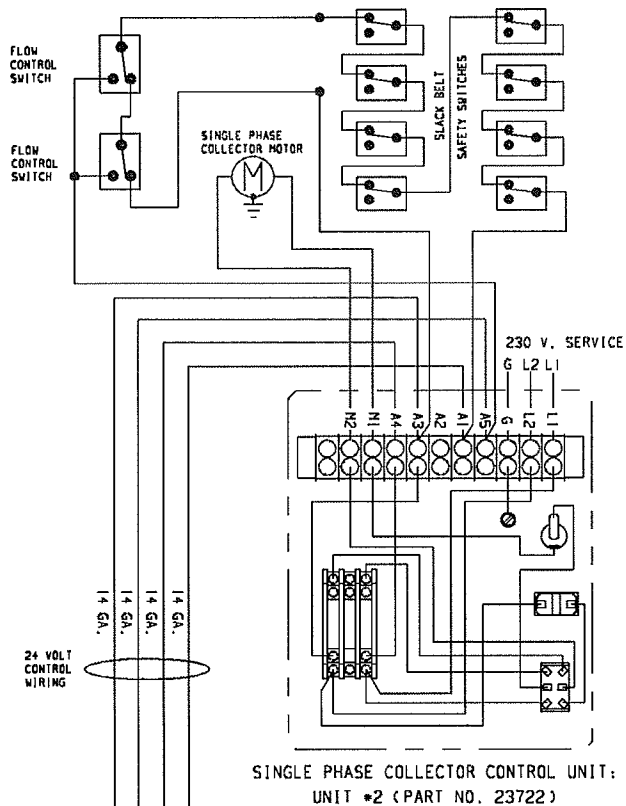
SINGLE PHASE CROSS CONVEYOR CONTROL UNIT: PART NO. 24835



WIRING WITHOUT FLOW CONTROL SWITCHES



WIRING WITH FLOW CONTROL SWITCHES



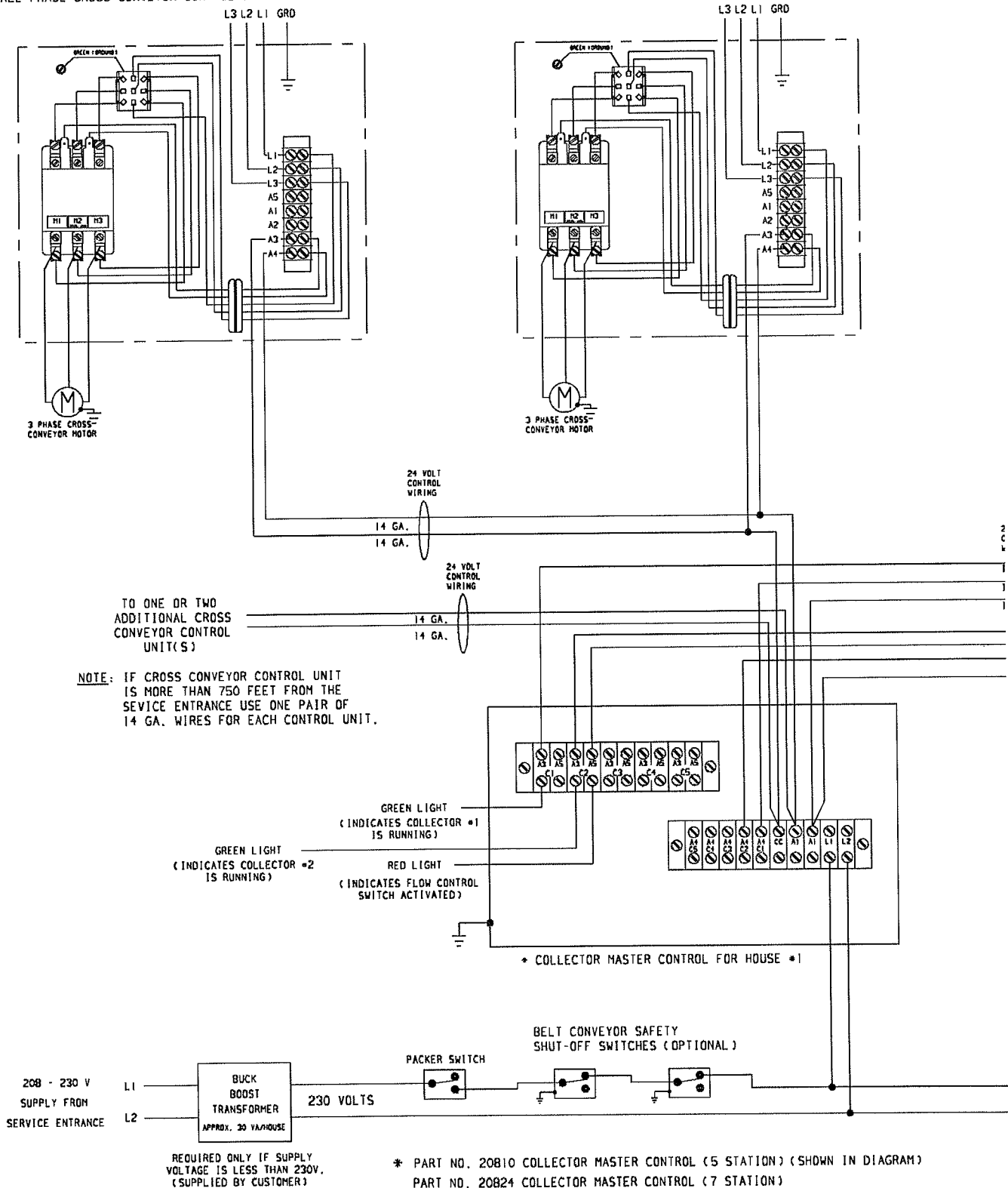
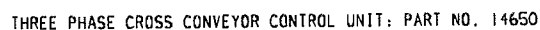
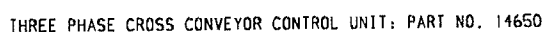
HER36, 12 6/92

* COLLECTOR MASTER CONTROL FOR HOUSE #2

TO ADDITIONAL COLLECTOR
MASTER CONTROLS

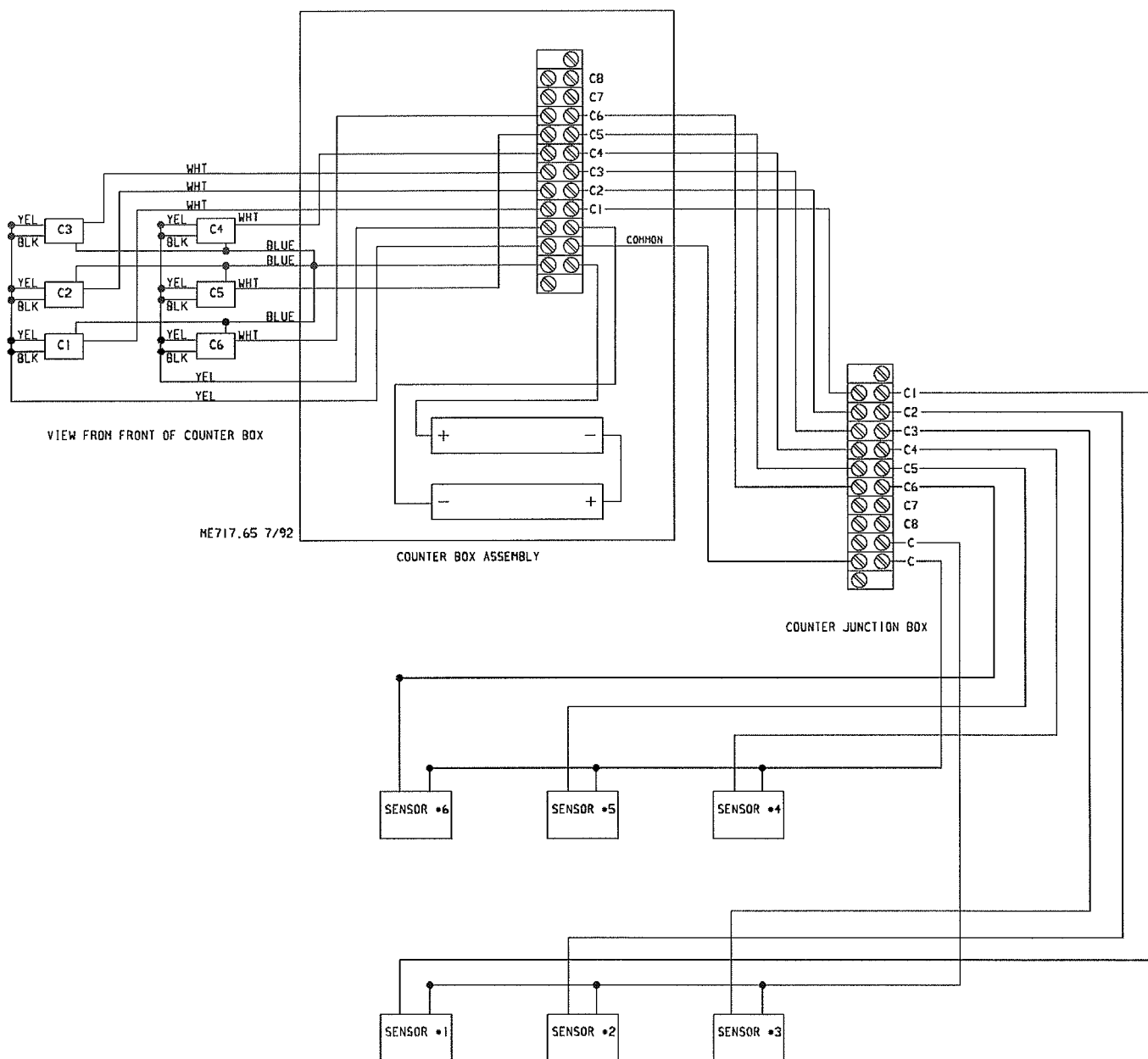
System Wiring Diagram (3-Phase)

IMPORTANT: SEE WIRING NOTES ON PAGE 11 BEFORE WIRING THE SYSTEM.

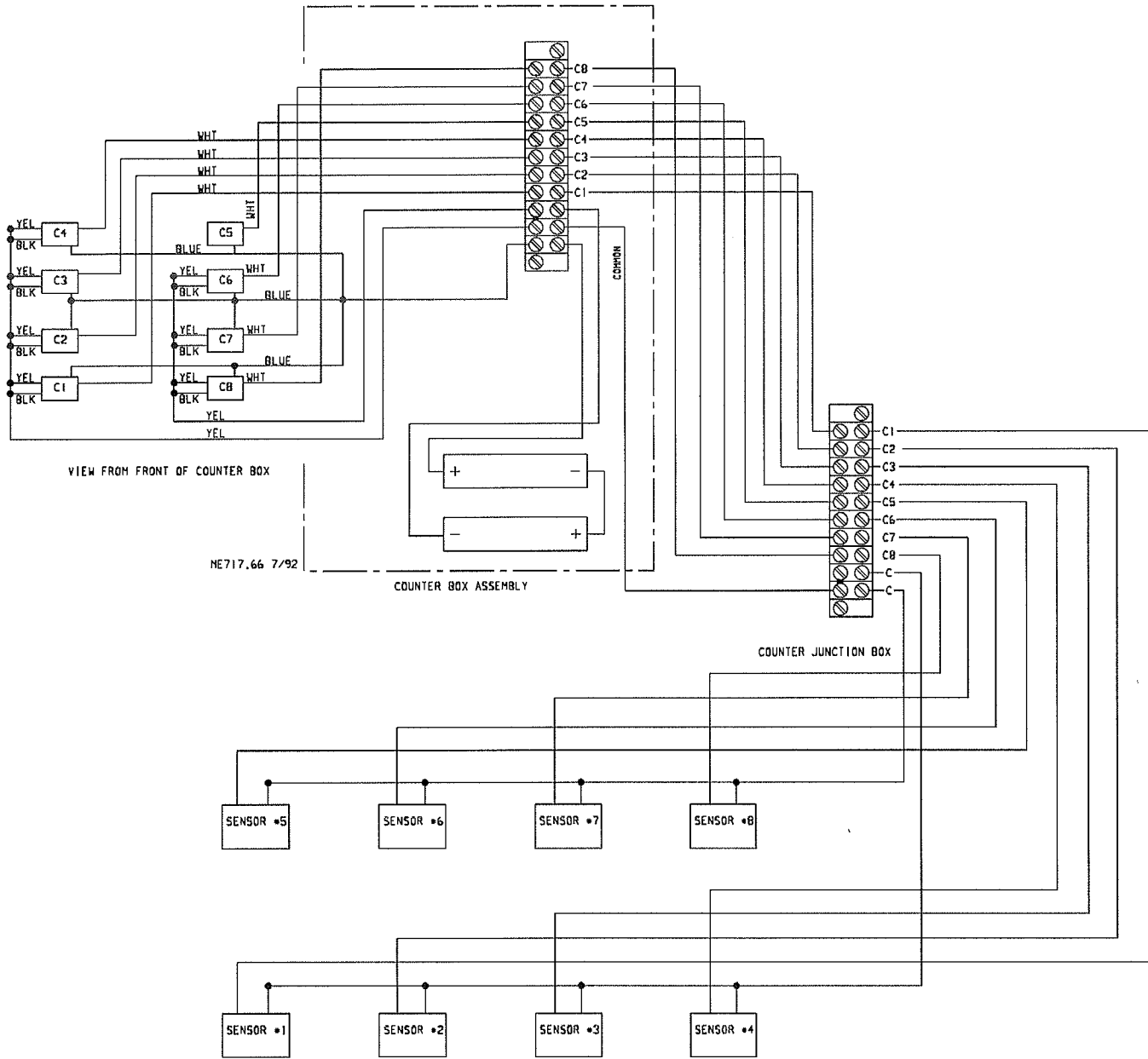


* PART NO. 20810 COLLECTOR MASTER CONTROL (5 STATION) (SHOWN IN DIAGRAM)
PART NO. 20824 COLLECTOR MASTER CONTROL (7 STATION)
PART NO. 20183 COLLECTOR MASTER CONTROL (12 STATION)

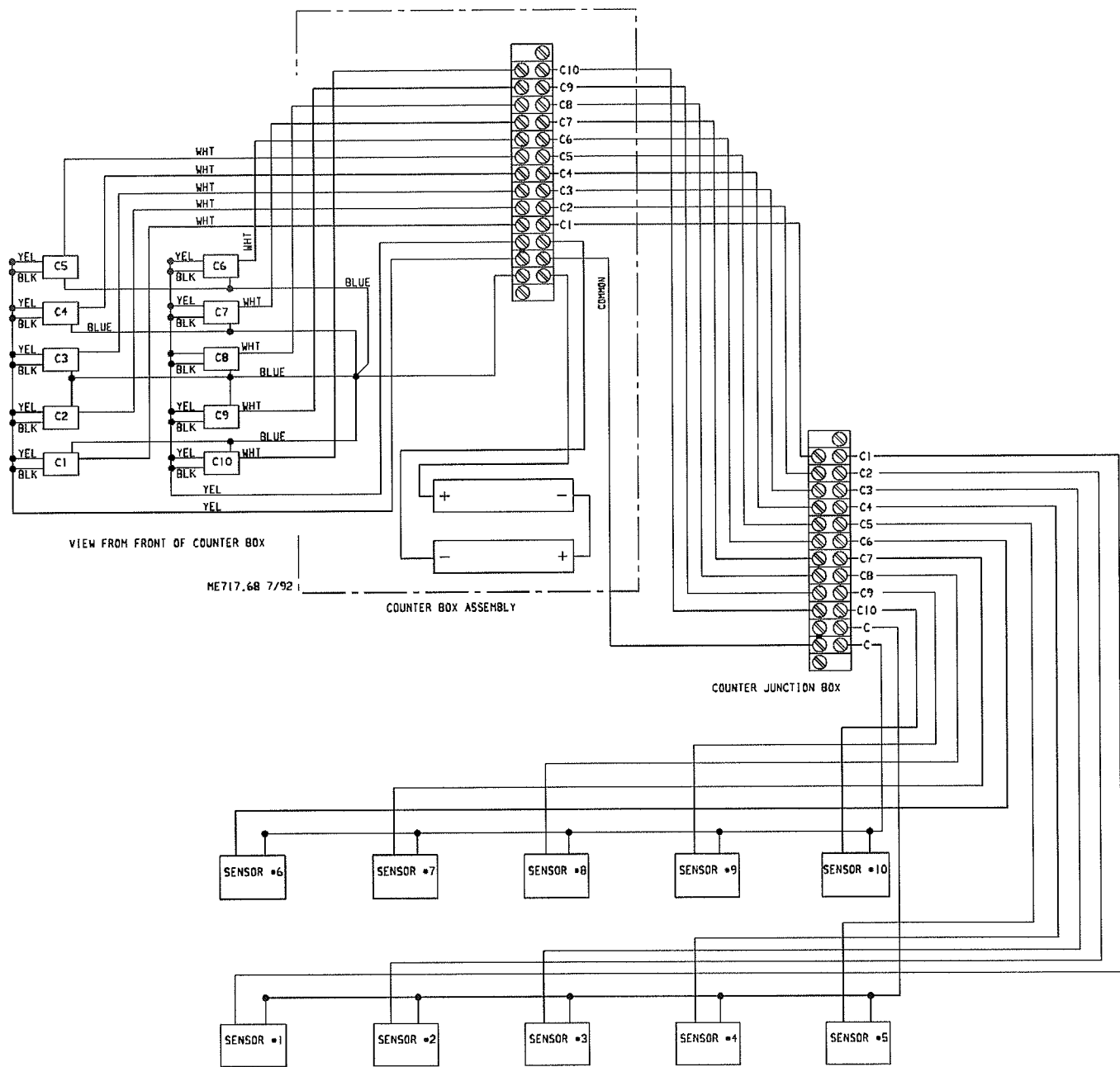
3-Hi Egg Counter Wiring Diagram

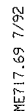


4-Hi Egg Counter Wiring Diagram



5-Hi Egg Counter Wiring Diagram





CHORE-TIME

DURA-CAGE Egg Collector Parts List

3-Hi • 4-Hi • 5-Hi

TABLE OF CONTENTS

<u>TOPIC</u>	<u>PAGE NO.</u>
Collector Assembly Part Numbers	21
Single Phase Egg Collector Control Unit	22
Three Phase Egg Collector Control Unit	22
Egg Counter	23
Collector End Framing Kit	23
Counter Box Assembly	24
Junction Box Assembly	25
Egg Collector Assembly Kit	26
Miscellaneous Components	26
Rear Return Assembly	27
24148-1 Rod Transfer Kit	27
Collector Modules	28
3-Hi Egg Collector	29-33
4-Hi Egg Collector	34-38
5-Hi Egg Collector	39-43
3-Hi Rear Return Framing	44
4-Hi Rear Return Framing	45
4-Hi Rear Return Framing	46

ORDERING INFORMATION

1. All parts should be ordered by **PART NUMBER** and **DESCRIPTION** as given in the **PARTS LIST**.
2. Parts are always billed when shipped. If a returned part is defective, and within warranty period, credit will be allowed against billing.
3. **CHECK SHIPMENT FOR DAMAGES AND SHORTAGES.**
4. All claims for damages or shortages resulting from shipment must be filed with the carrier.

USE ONLY AUTHORIZED

CHORE-TIME

REPLACEMENT PARTS.

Made to work.

Built to last.

COLLECTOR ASSEMBLY PART NUMBERS

<u>PART NUMBER</u>	<u>TIERS</u>	<u>BELT</u>	<u>MOTOR</u>	<u>COUNTERS</u>	<u>SHAFTS</u>
24160-1	3-Hi	4"	1-Phase	w/o Counters	Steel Shafts
24160-2	3-Hi	4"	1-Phase	w/ Counters	Steel Shafts
24160-3	3-Hi	4"	3-Phase	w/o Counters	Steel Shafts
24160-4	3-Hi	4"	3-Phase	w/ Counters	Steel Shafts
24160-5	3-Hi	4"	1-Phase	w/o Counters	Stainless Steel Shafts
24160-6	3-Hi	4"	1-Phase	w/ Counters	Stainless Steel Shafts
24160-7	3-Hi	4"	3-Phase	w/o Counters	Stainless Steel Shafts
24160-8	3-Hi	4"	3-Phase	w/ Counters	Stainless Steel Shafts
14900-1	4-Hi	4"	1-Phase	w/o Counters	Steel Shafts
14900-2	4-Hi	4"	1-Phase	w/ Counters	Steel Shafts
14900-3	4-Hi	4"	3-Phase	w/o Counters	Steel Shafts
14900-4	4-Hi	4"	3-Phase	w/ Counters	Steel Shafts
14900-5	4-Hi	4"	1-Phase	w/o Counters	Stainless Steel Shafts
14900-6	4-Hi	4"	1-Phase	w/ Counters	Stainless Steel Shafts
14900-7	4-Hi	4"	3-Phase	w/o Counters	Stainless Steel Shafts
14900-8	4-Hi	4"	3-Phase	w/ Counters	Stainless Steel Shafts

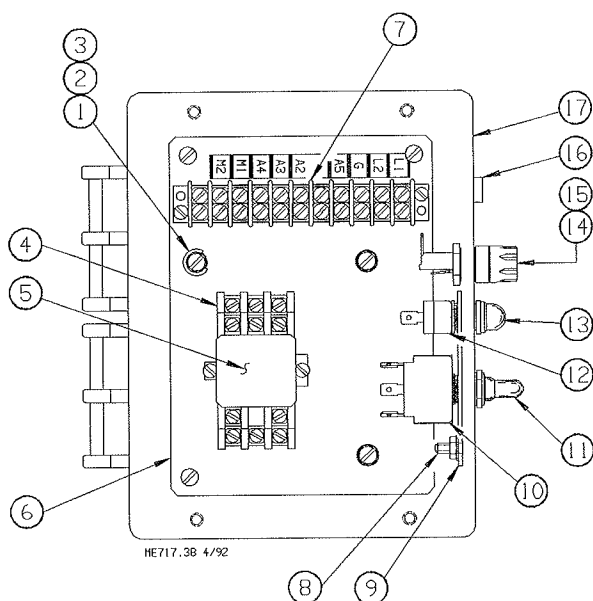
The Collectors listed above may be ordered without the motors supplied, by adding the suffix "LM" to the part number. Example: 24160-1LM DURA-CAGE 3-Hi Egg Collector without Motor.

Note: The Collector will be wired for whichever phase is specified by the part number ordered.



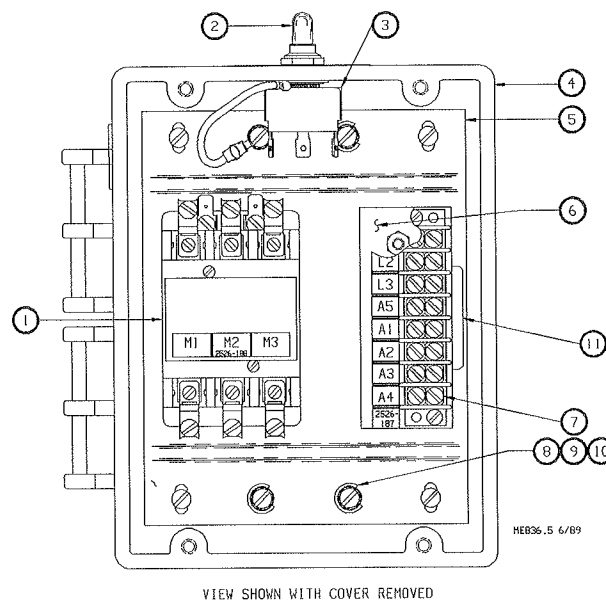
23722 Single Phase Egg Collector Control Unit

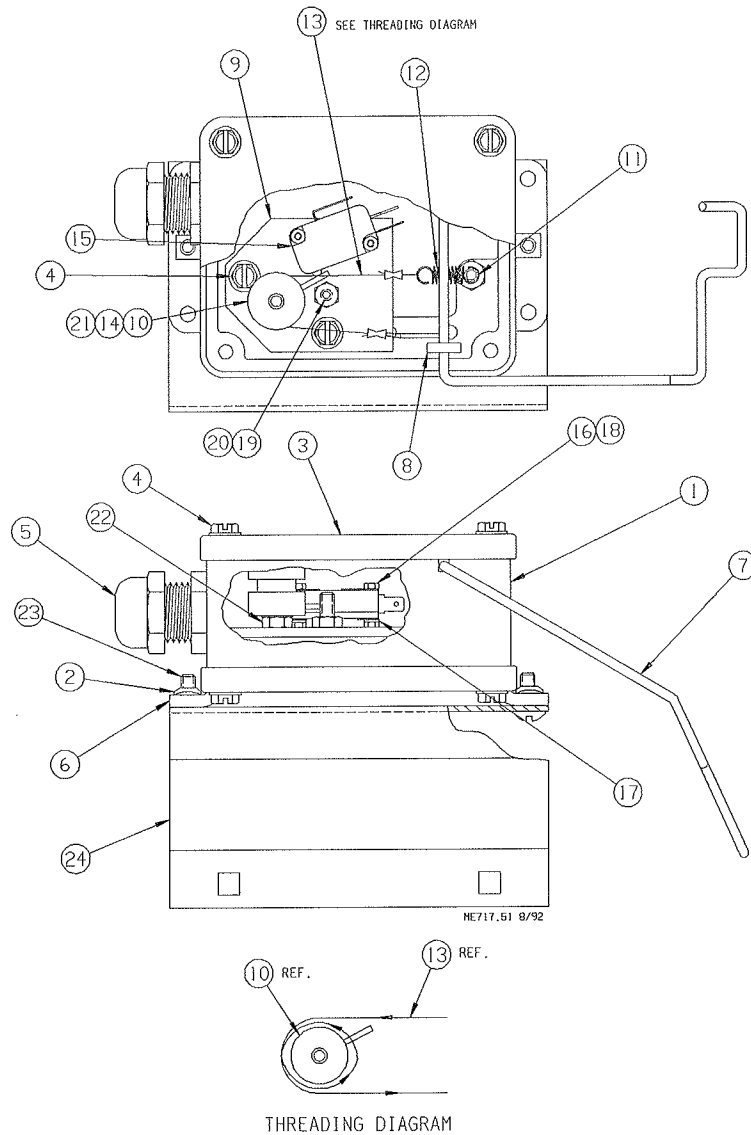
Item	Description	Part No.
1	10-32 Ground Screw	4968
2	Cup Washer	5775
3	#10 Ext. Lockwasher	305
4	Relay Socket	20480
5	Control Relay	20479
6	Component Plate	24708
7	Terminal Block	7347
8	10-24 Hex Nut	4297
9	Ground Plate	24415
10	Toggle Switch	20135
11	Toggle Switch Boot	1739
12	Momentary Switch	5785
13	Push Button Boot	20784
14	Fuse Holder	24431
15	Slow Blow Fuse	20130
16	1/2" NPT Plug	24458-2



14650 Three Phase Egg Collector Control Unit

Item	Description	Part No.
1	Contactor	20837
2	Toggle Switch Boot	1739
3	Toggle Switch	14385
4	Control Box	14392
5	Mounting Plate Support	14391
6	Terminal Bracket	14383
7	Terminal Block	7270
8	#10-32 Ground Screw	4968
9	Cup Washer	5775
10	#10 External Lockwasher	305
11	Grommet	8514



27576-0 Egg Counter

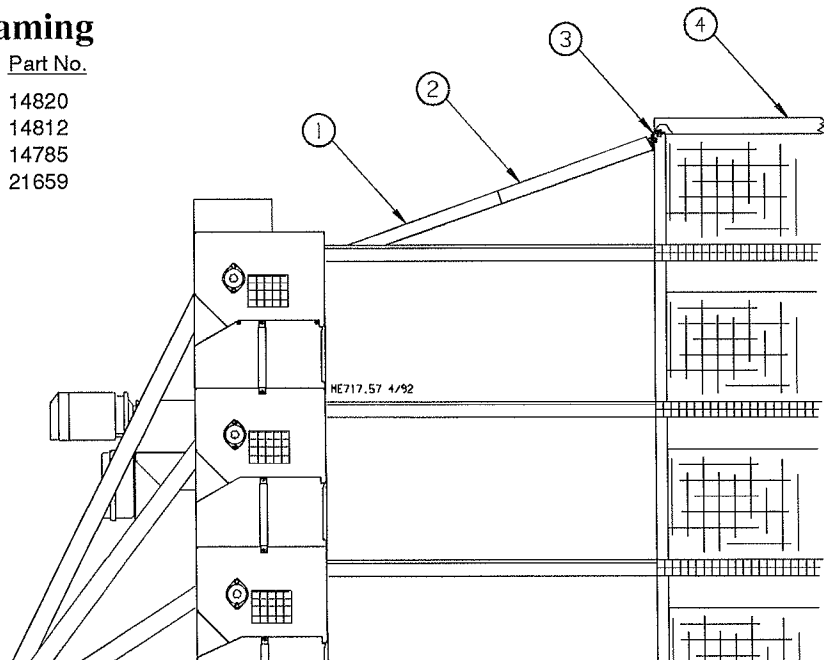
Item	Description	Part No.
1	Counter Box (L.H.)	13640-1
	Counter Box (R.H.)	13640-2
2	Stamped Nut	135
3	Switch Box Cover	6776
4	Screw, Twin Helix #10	28075
5	Liquid Tight Connector	13477
6	Mounting Cover	6956
7	Sensor Arm Weldment (L.H.)	27579-1
	Sensor Arm Weldment (R.H.)	27579-2
8	Spacer	14415
9	Mounting Plate	13627
10	Sliding Roll Assembly	13637
11	10-32 Stud	7007
12	Extension Spring	14418
	10-32 x 1" Screw	4418-1
13	String Assembly	14581
14	10-32 Blind Rivet Nut	4587
15	Switch	13706
16	Nut, Hex 4-40	3511
17	Flat Washer	149
18	Screw, 4-40x3/4	4143-2
19	Screw, 4-40x3/4	1876
20	Nut, Hex 10-24	313
21	Screw, 10-32x1	4418-1
22	10-32 Nut	4297
23	Screw, 10-24x1/2	1795
24	Sensor Bracket	29558

The complete left hand Egg Counter Assembly may be ordered under part number 27576-1.

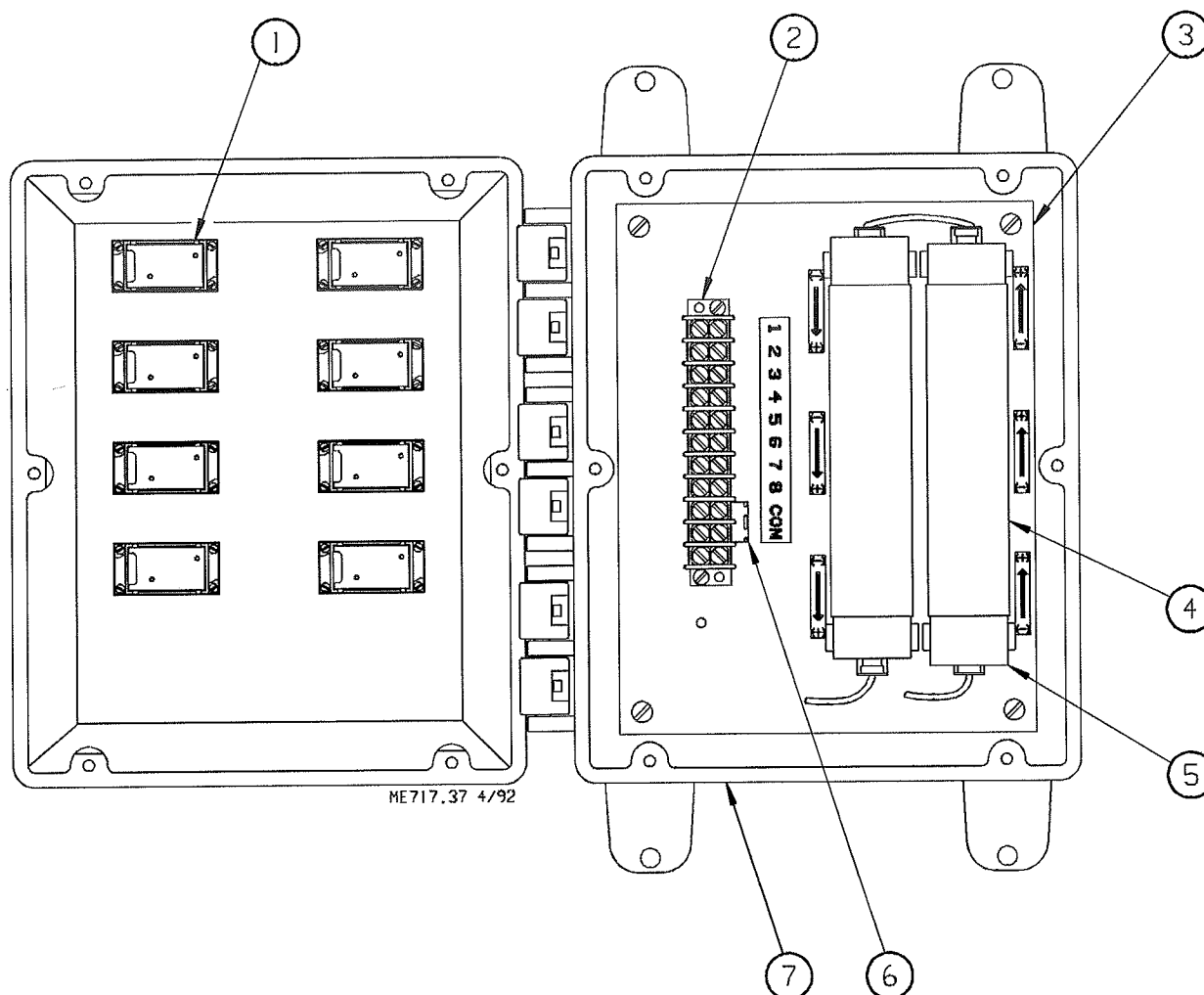
The complete right hand Egg Counter Assembly may be ordered under part number 27576-2.

14620 Collector End Framing

Item	Description	Part No.
1	End Brace Angle	14820
2	End Brace	14812
3	Brace Angle Clip	14785
4	Power End Horizontal Brace	21659



Counter Box Assembly (for 3, 4, & 5-Hi Collectors)

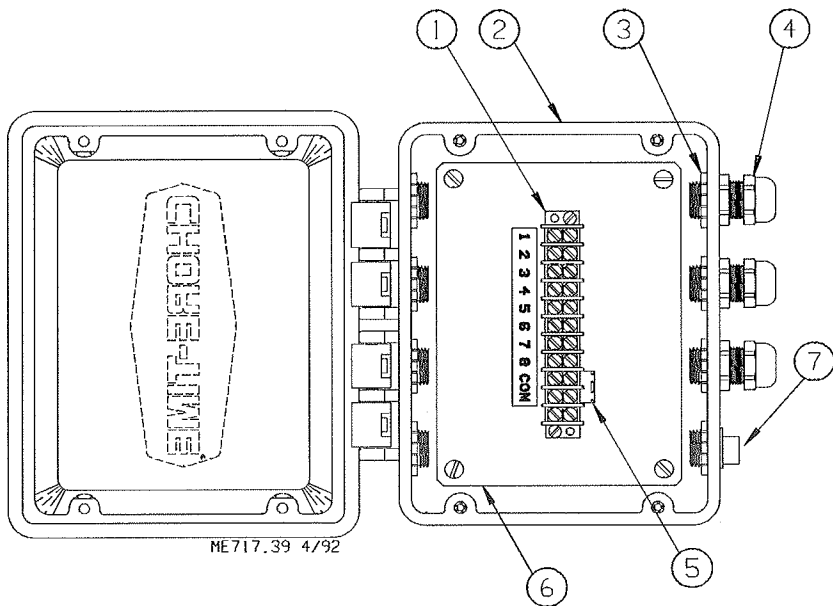


Item	Description	3-Hi Part No.	4-Hi Part No.	5-Hi Part No.
1	Counter	13965	13965	13695
2	Terminal Block	7347	7347	27680
3	Mounting Plate	13680	13680	13680
4	Battery	13773	13773	13773
5	Battery Holder Assembly	13964	13964	13964
6	Jumper	7349	7349	7349
7	Box and Cover	14561	13738	27678

The Counter Box Assembly for 3-Hi Collectors may be ordered under Chore-Time Part No. 14562.

The Counter Box Assembly for 4-Hi Collectors may be ordered under Chore-Time Part No. 13628

The Counter Box Assembly for 5-Hi Collectors may be ordered under Chore-Time Part No. 27679.



Junction Box Assembly (3 & 4-Hi)

Item	Description	Part No.
1	Terminal Block	7347
2	Junction Box	13971
3	1/2" Conduit Locknut	3357
4	1/2" Liquid Tight Connector	23779
5	Jumper	7349
6	Component Board	23720
7	Pipe Plug	24458-2

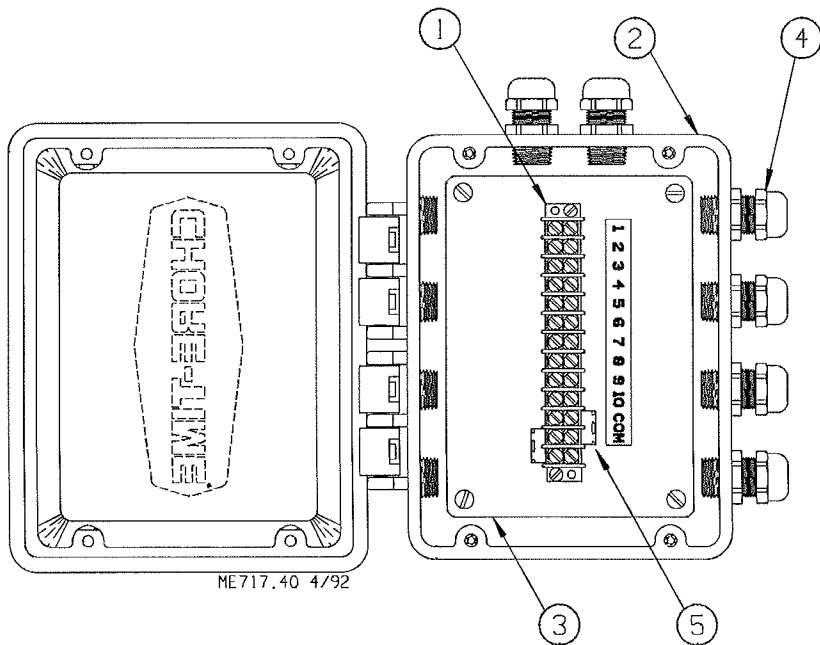
The complete 3-Hi Junction Box Assembly may be ordered under Chore-Time Part No. 14577.

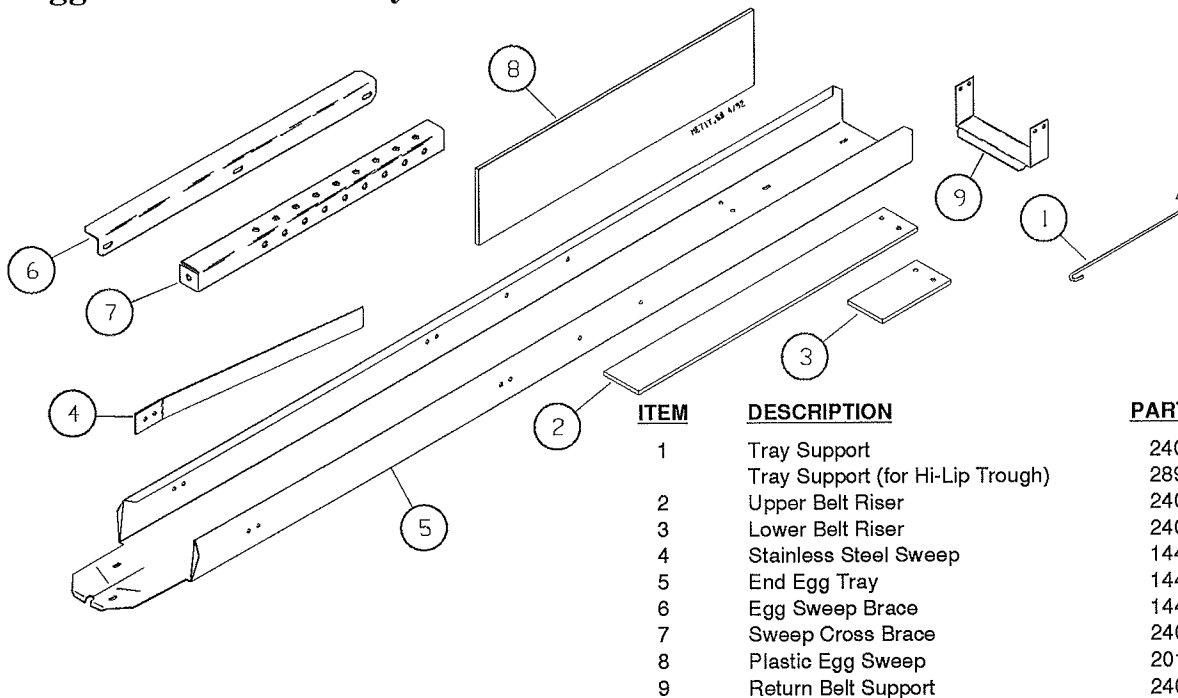
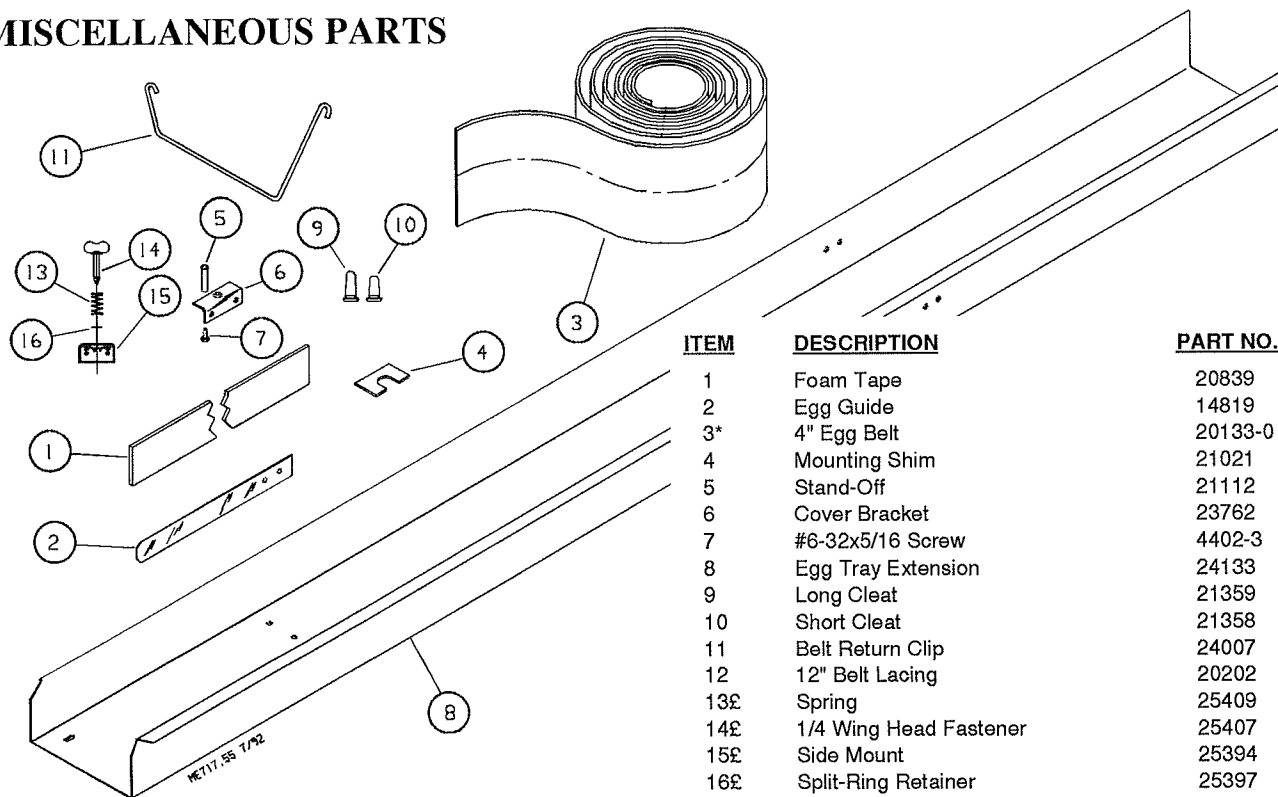
The complete 4-Hi Junction Box Assembly may be ordered under Chore-time part nO. 13973.

Junction Box Assembly (5-Hi)

Item	Description	Part No.
1	Terminal Block	27680
2	Junction Box	27166
3	Component Board	23720
4	1/2" Liquid Tight Connector	23779
5	Jumper	7349

The complete Junction Box Assembly may be ordered under Chore-Time Part No. 25910.

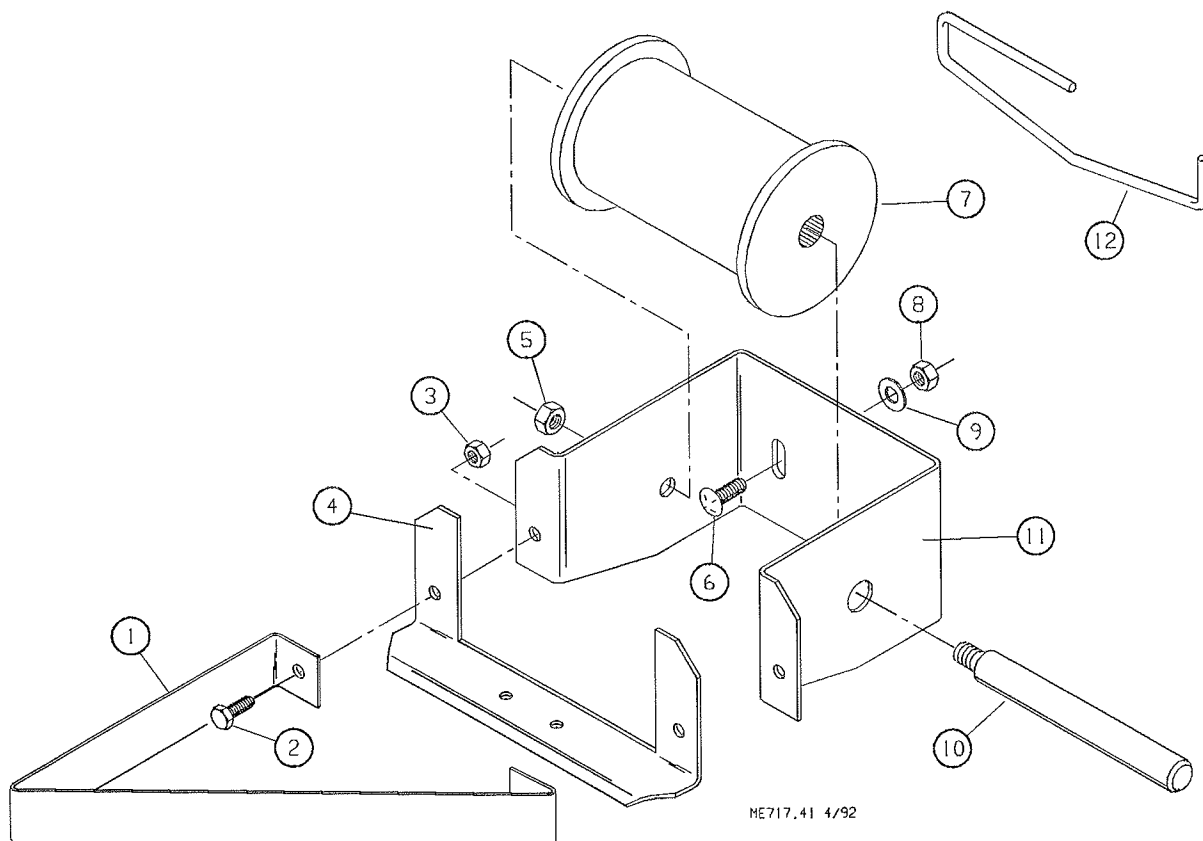


3-Hi Egg Collector Assembly Kit: 28530-3**4-Hi Egg Collector Assembly Kit: 28530-4****5-Hi Egg Collector Assembly Kit: 28530-5****MISCELLANEOUS PARTS**

*The 4" Egg Belt may be ordered in increments from 400' to 1400'. Example: For 550' of egg belt order part number 20133-550.

£Components used on upper tiers and I/T 1 only.

Rear Return Assembly



Item	Description	Part No.
1	Rear Return Belt Scraper	20213
2	1/4-20 x 1/2 Hex Hd Screw	1487
3	1/4-20 Nut	751
4	Rear Return Front Plate	20215
5	3/8-16 Hex Nut	1549
6	5/16-18 x 3/4 Carriage Bolt	20125
7	Rear Return Roller	24271
8	5/16-18 Hex Nut	2145
9	5/16 Flat Washer	2230
10	Rear Return Shaft	25035-5
11	Rear Return Frame	20216
12	Belt Guide (not incl. with R.R. Ass'y)	20097



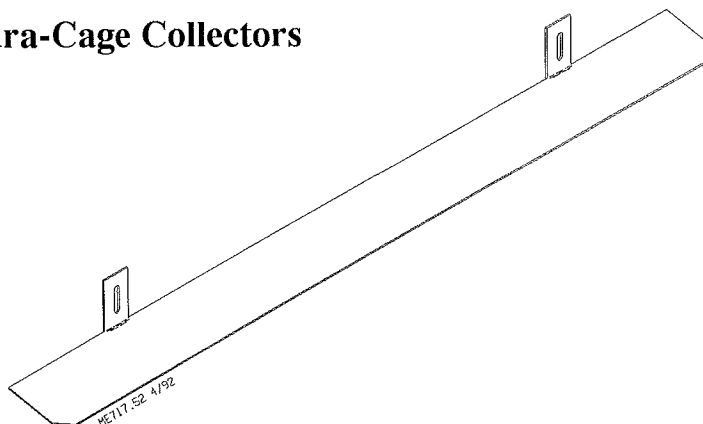
The 4" Rear Return Assembly may be ordered under the following numbers: 20217-1 L.H. 20217-2 R.H.

Rod Transfer Kits for 3, 4, & 5-Hi Dura-Cage Collectors

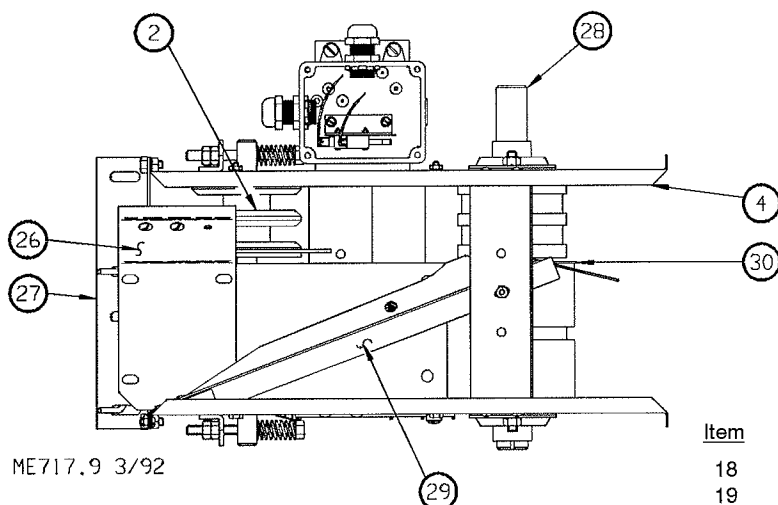
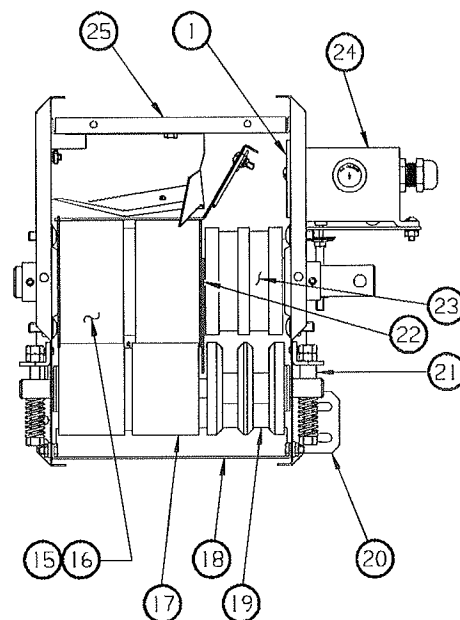
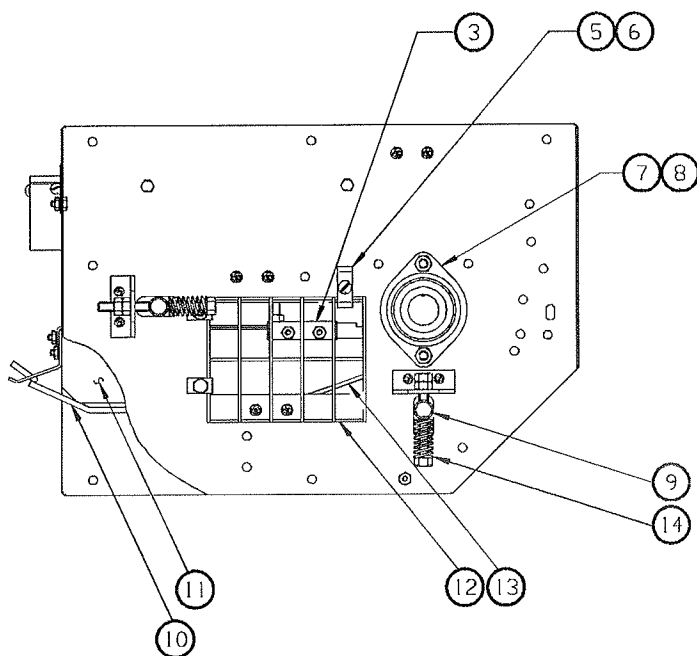
Description	Part No.
Rod Transfer (3-Hi Dura-Cage)	14538-6
Rod Transfer (4-Hi Dura-Cage)	14538-5
Rod Transfer (5-Hi Dura-Cage)	14538-17

Rod Transfer Kit (including Rod Transfer and hardware)

- 3-Hi DC Collector Rod Transfer Kit: 24148-6
- 4-Hi DC Collector Rod Transfer Kit: 24148-5
- 5-Hi DC Collector Rod Transfer Kit: 24148-17



Collector Module Assembly



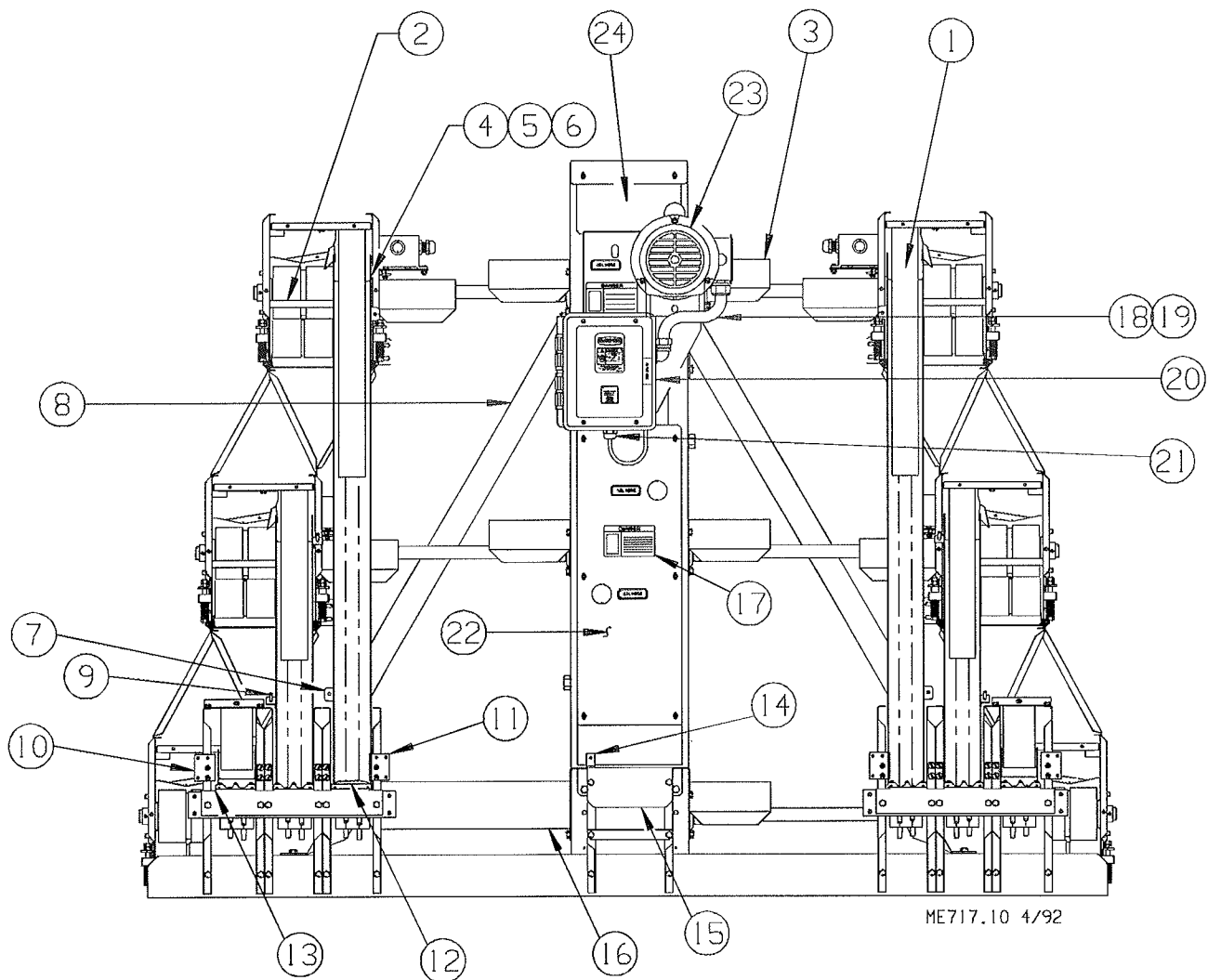
ME717.9 3/92

Item	Description	Part No.
1	Module Liner	23812
2	Adjusting Roller	21015
3	Slack Belt Actuator Arm Ass'y (L.H.)	9547-1
	Slack Belt Actuator Arm Ass'y (R.H.)	9547-2
4	Side Panel Ass'y (L.H.)	24907-1
	Side Panel Ass'y (R.H.)	24907-2
5	Access Gate Latch	23725
6	Compression Spring	5534
7	Flangette	20191-1
8	Bearing	20191-2
9	Module Idler Shaft (solid steel)	9364
	Module Idler Shaft (stainless steel tube)	14386-2
10	Slack Belt Side (L.H.)	23711-1
	Slack Belt Side (R.H.)	23711-2
11	SBC Bottom Wire	9371
12	Access Gate	23781
13	SBC Front Wire	21391
14	Compression Spring	20381
15	Drive Roller	20014
16	1/4" Square Key	2419-3
17	Snub Roller	9542

Item	Description	Part No.
18	Snub Roller Scraper	25507
19	Pyramid Guide Roller	21016
20	Cross Brace Connector	23725
21	Spacer	21285
22	Plastic Spacer	21067
23	Pyramid Idler Roller	21014
24	SBC Switch Box Ass'y (L.H.)	23792-1
	SBC Switch Box Ass'y (R.H.)	23792-2
25	Module Plate	24959
26	Entrance Tray Ass'y (L.H.)	26785-1
	Entrance Tray Ass'y (R.H.)	26785-2
27	Slack Belt Back	9366
28	Module Shaft	9385-1
29	Entrance Tray Sweep Ass'y (L.H.)	14425-1
	Entrance Tray Sweep Ass'y (R.H.)	14425-2
30	Round Belt Guide	25474

Dura-Cage Module Assembly Part Numbers:

Module Assembly (L.H.) (solid steel Idler Shafts)	9369-1
Module Assembly (R.H.) (solid steel Idler Shafts)	9369-2
Module Assembly (L.H.) (stainless steel Idler Shafts)	9369-3
Module Assembly (R.H.) (stainless steel Idler Shafts)	9369-4

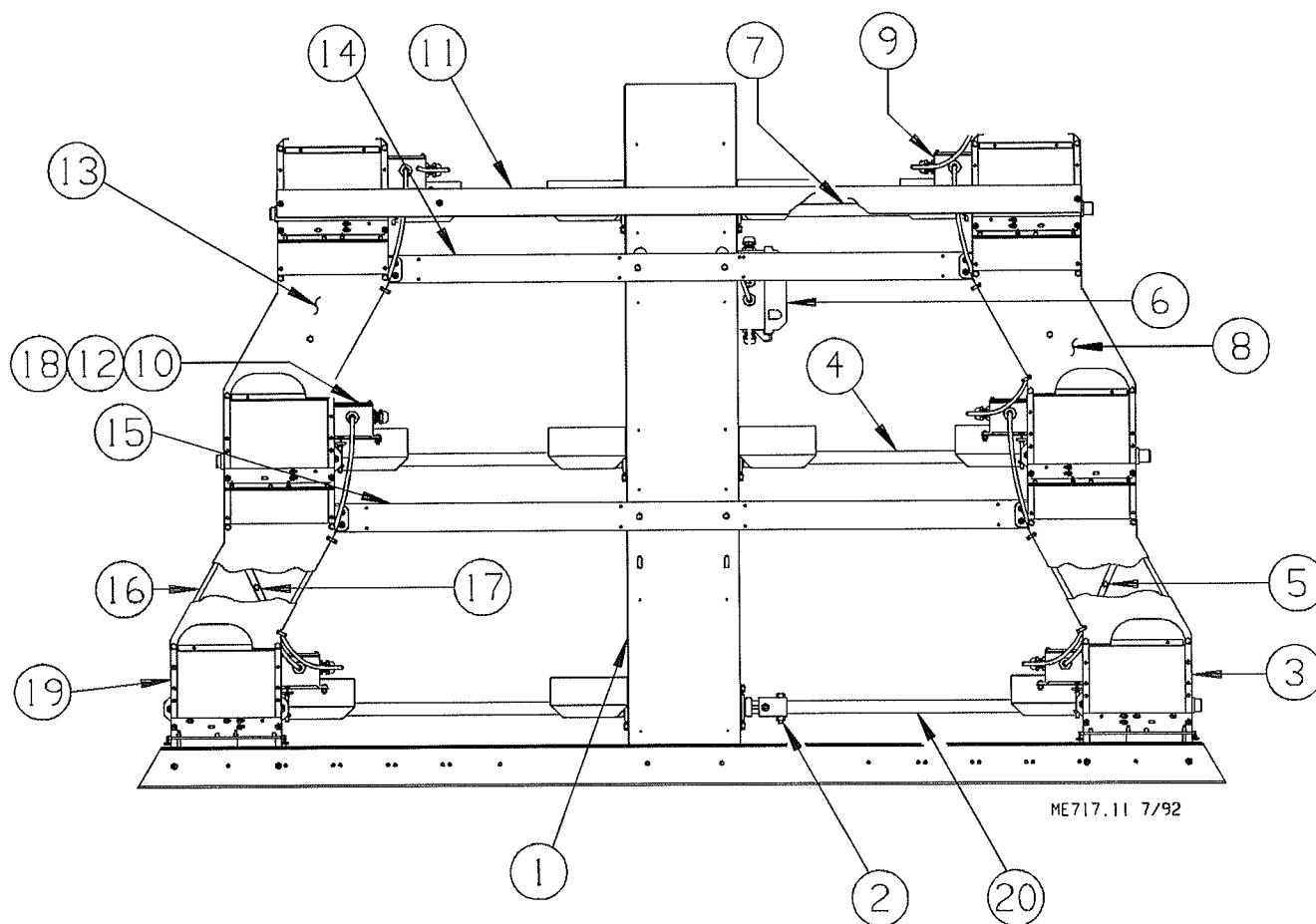


3-Hi Collector Assembly--Front View

Item	Description	Part No.	Item	Description	Part No.
1	Upper Egg Cushion	8850	14	Sweep Brace	13952
2	Module Chute Spacer	14043	15	Escalator Drive Cover	23746
3	Connector Cover	23773	16	Connector Cover	14789
4	Upper Module Guide	23831	17	CAUTION Decal	2527-10
5	Foam Tape	20839	18	Conduit Assembly	14654
6	Spacer	23760	19	1/2" Conduit Locknut	3357
7	Side Mount	25394	20*	Control Box Assembly (Single Phase)	23722
8	Housing Back Brace (L.H.)	24145-1		Control Box Assembly (Three Phase)	14650
	Housing Back Brace (R.H.)	24145-2	21	Liquid Tight Connector	23779
9	Standoff Bracket Assembly	27514	22	Housing Cover Weldment	23741
10	Outer Lower Chute Side	9808	23	1/4 H.P. Motor (Single Phase)	20466
11	Inner Lower Chute Side	9807		1/2 H.P. Motor (Three Phase)	25333
12	Transition Piece	21051	24	Upper Housing Cover	14814
13	Spacer	21607			

3-Hi Collector Assembly--Back View

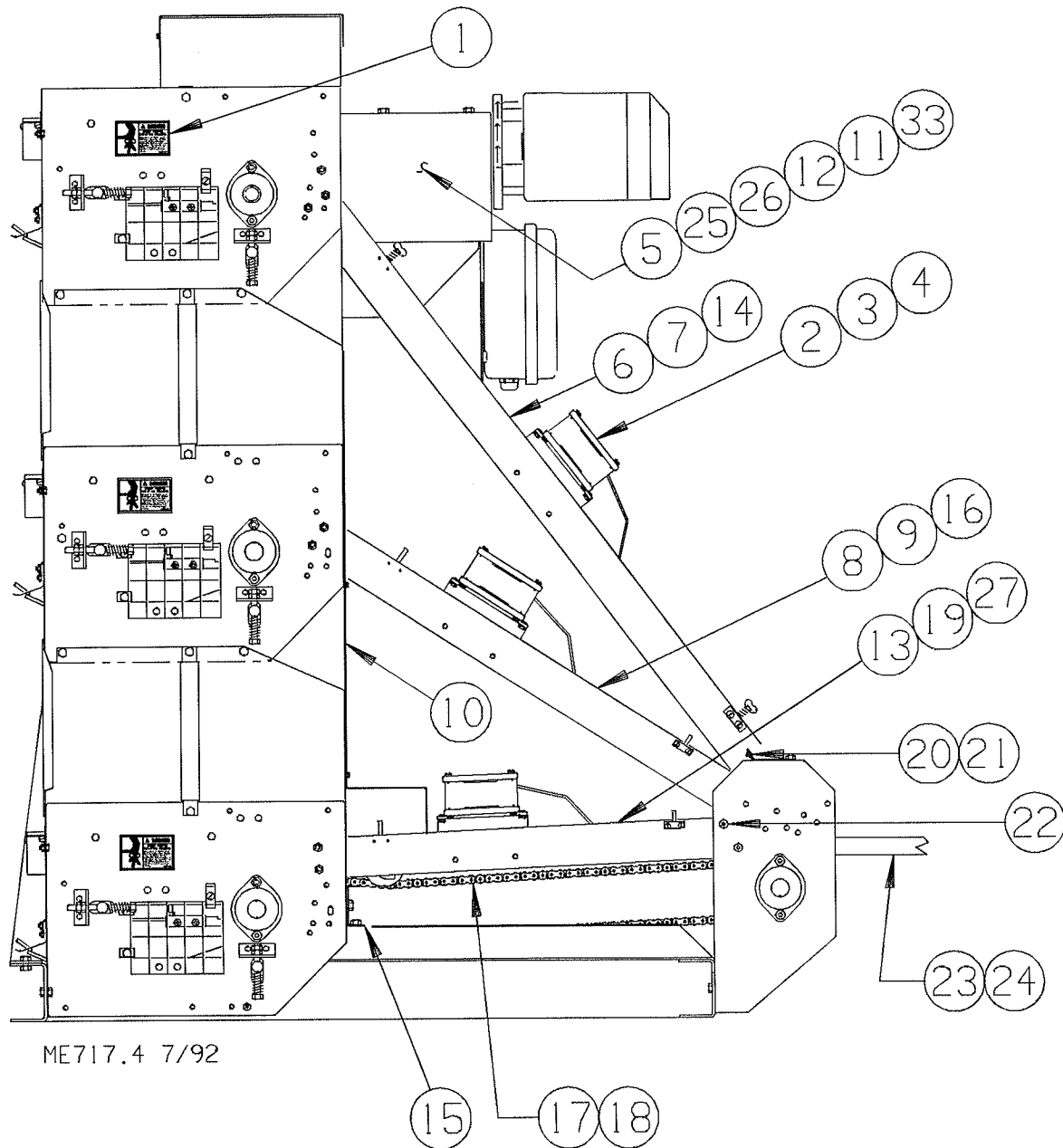
Item	Description	Part No.	Item	Description	Part No.
1	Drive Housing Assembly	24139	12	Gasket	6777
2	1" Coupling	20269	13	Module Back Brace (R.H.)	14616-2
3	Module Assembly (L.H.) (steel shafts)	9369-1	14	Top Cross Brace	14548
	Module Assembly L.H.) (stainless shafts)	9369-3	15	Cross Brace	14549
4	1" Connecting Shaft	21049-23	16	Module Support	14782
5	Module Brace (L.H.)	14614-1	17	Module Brace (R.H.)	14614-2
6	Junction Box	13973	18	Twin Helix Screw	6890
7	1" Connecting Shaft	21049-6	19	Module Assembly (R.H.) (steel shafts)	9369-2
8	Module Back Brace (L.H.)	14616-1		Module Assembly (R.H.) (stainless shafts)	9369-4
9	1/2" N.P.T. Hole Plug	23791	20	1" Connecting Shaft	21049-9
10	Switch Box Cover	6776			
11	Top Back Brace	14551			



3-Hi Collector Assembly--Side View

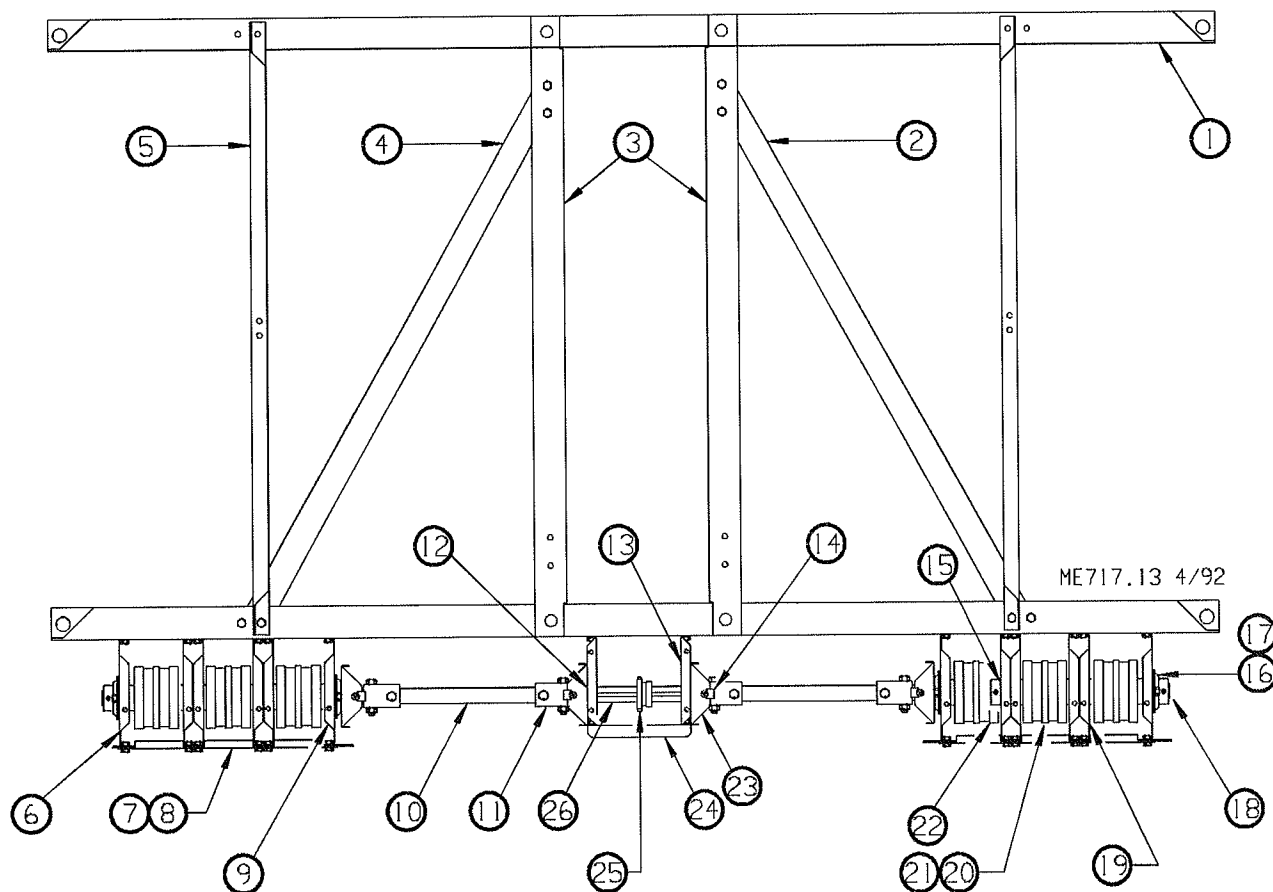
Item	Description	Part No.	Item	Description	Part No.
1	Danger Decal	2527-42	15	Module Cross Frame	24144
2*	Counter Box Assembly (LH.)	27576-1	16	Egg Chute Cover (IT)	14634
3*	Counter Box Assembly (R.H.)	27576-2	17	Drive Chain	21045-4
4	Steel Spacer	21470	18	Connecting Link	20017
5	Drive Cover Weldment	23734	19	Escalator Belt Assembly	21057-5
6	Escalator Belt Assembly	21057-14	20	Cushion Flap	14809
7	Inner Tier I Egg Chute	25511	21	Lower Brace	14808
8	Escalator Belt Assembly	21057-13	22	Inside Chute Spacer	23727
9	Inner Tier II Egg Chute	14541	23	Stop Sweep	14834
10	Module Shield	23864	24	Lower Egg Guide	14819
11	14 Tooth x 1" Bore Sprocket	20390	25	Speed Reducer	20235
12	1/4" Square Key	2419-3	26	Shock Pad	20053
13	Egg Chute Cover (BT)	14633	27	Bottom Tier Egg Chute	14797
14	Egg Chute Cover (UT)	14635			

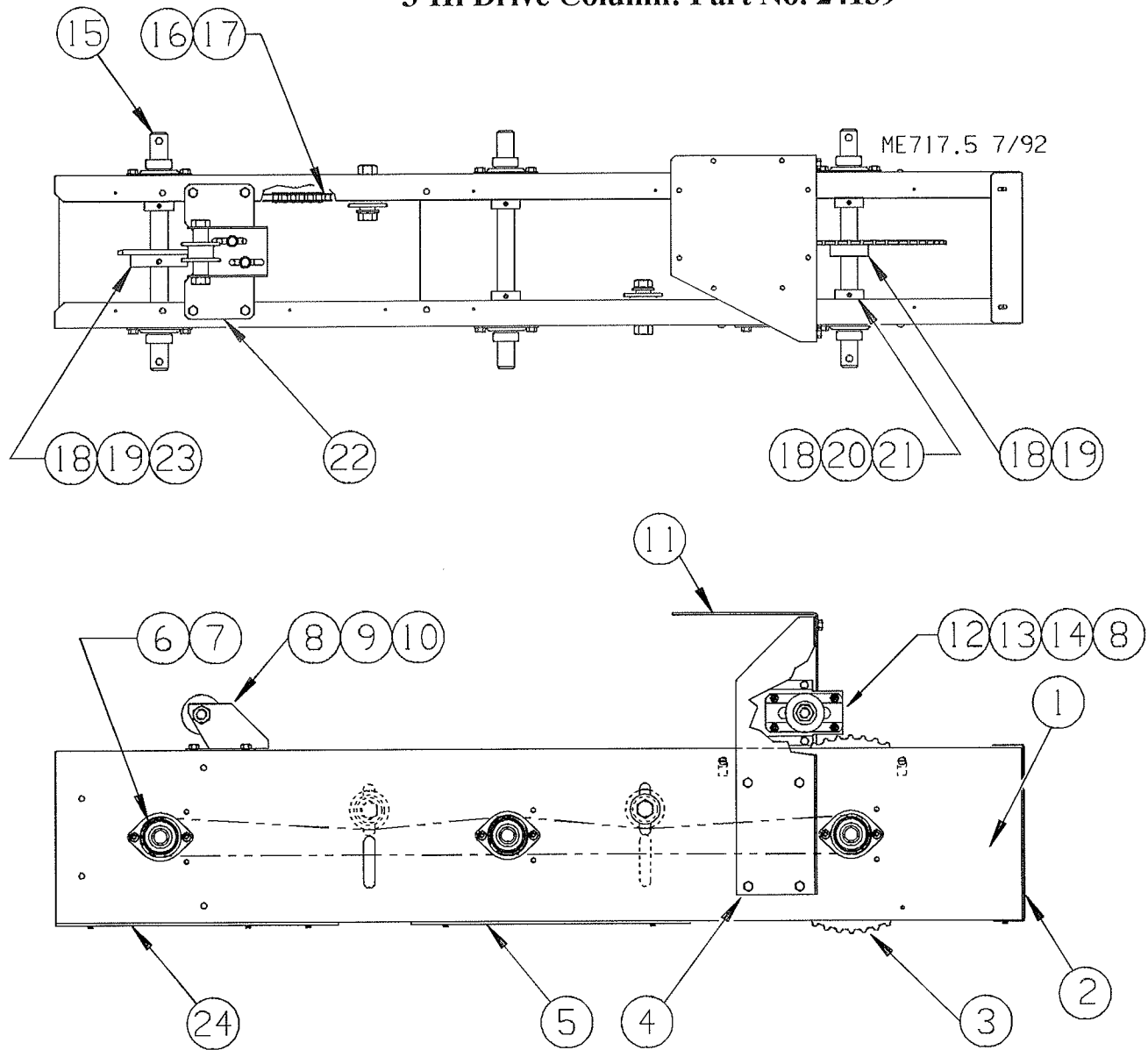
*See individual parts lists.



3-Hi Collector Assembly--Top View

Item	Description	Part No.	Item	Description	Part No.
1	Main Frame	24816	14	Clip On Nut	20095
2	Main Angle Brace R.H.	24141-2	15	1" Set Collar	5759
3	Cross Frame	24813	16	1" Flangette	20191-1
4	Main Angle Brace L.H.	24141-1	17	1" Bearing	20191-2
5	Inner Cross Brace	23706	18	Belt Drive Shaft	20572-6
6	Side Panel R.H.	14542-2	19	Inner Side Panel L.H.	28973-1
7	Transition Holder	24142	20	Drive Roller	21028
8	Transition Spacer	24143	21	1/4" Square Key	2419-3
9	Side Panel L.H.	14542-1	22	Inner Side Panel R.H.	28973-2
10	1" Connecting Shaft	21049-10	23	Drive Cover Bracket	9989
11	1" Coupling	20269	24	Front Angle Brace	23733
12	Front Drive Side Panel L.H.	23732-1	25	12 tooth x 1" Bore Sprocket	20086
13	Front Drive Side Panel R.H.	23732-2	26	Front Drive Shaft	23767



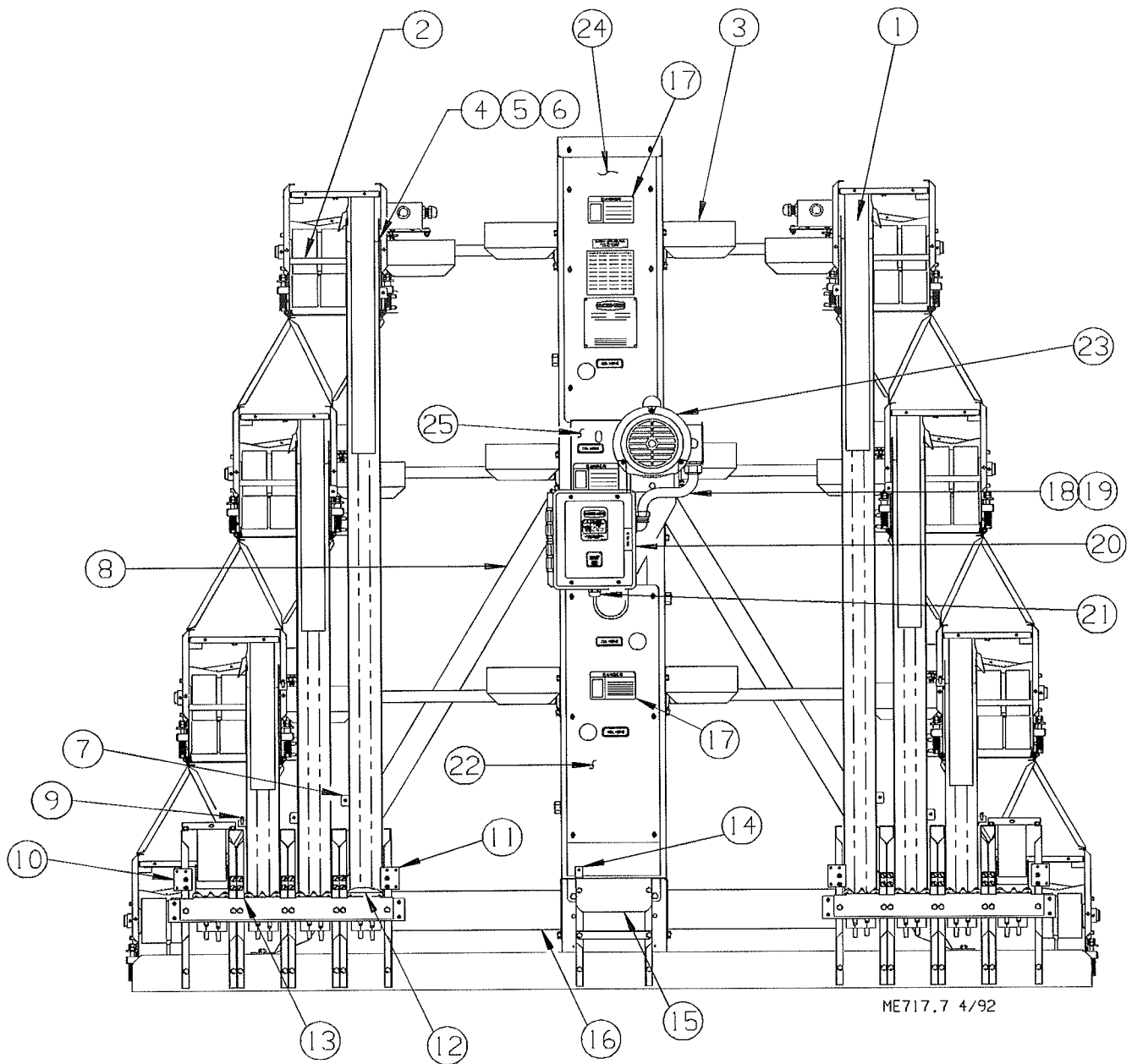
3-Hi Drive Column: Part No. 24139

Item	Description	Part No.	Item	Description	Part No.
1	Drive Housing	14583	15	Drive Housing Shaft	23702
2	Top Cover	25117	16	Drive Chain	21045-5
3	70 Tooth 1" Bore Sprocket	14668	17	Connecting Link	20017
4	Motor Bracket (L.H.)	23707-1	18	1/4" Square Key	2419-3
	Motor Bracket (R.H.)	23707-2	19	5/16-18x5/8" Set Screw	5692
5	Lower Cover	25118	20	14 Tooth 1" Bore Sprocket	20390
6	Bearing	20191-2	21	1/4-20x1/4" Set Screw	13189
7	Flangette	20191-1	22	Escalator Idler Base	23736
8*	Chain Idler Roller	20369	23	28 Tooth 1" Bore Sprocket	20201
9*	Idler Bracket	23737	24	Bottom Cover	24806
10*	Idler Bushing	23788			
11	Motor Base	23715			
12**	Idler Bracket	20047			
13**	Idler Bushing	21239			
14**	Idler Base	23735			

*These components may be ordered as an assembly under Chore-Time Part No. 23738.

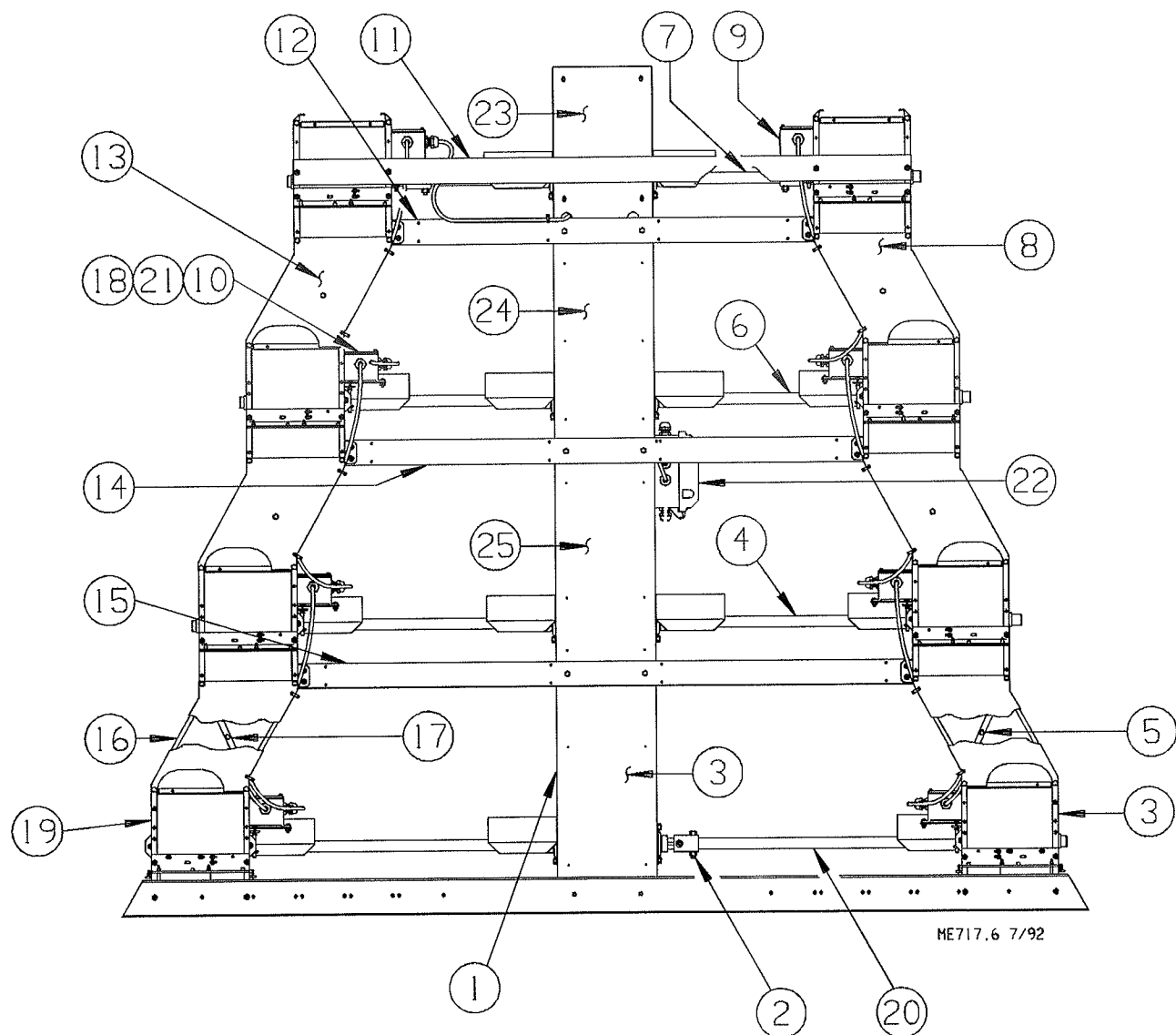
**These components may be ordered as an assembly under Chore-Time Part No. 23740.

4-Hi Collector Assembly--Front View



<u>Item</u>	<u>Description</u>	<u>Part No.</u>	<u>Item</u>	<u>Description</u>	<u>Part No.</u>
1	Upper Egg Cushion	8850	14	Sweep Brace	13952
2	Module Chute Spacer	14043	15	Escalator Drive Cover	23746
3	Connector Cover	23773	16	Connector Cover	14789
4	Upper Module Guide	23831	17	CAUTION Decal	2527-10
5	Foam Tape	20839	18	Conduit Assembly	23821
6	Spacer	23780	19	1/2" Conduit Locknut	3357
7	Side Mount	25394	20*	Control Box Assembly (Single Phase)	23722
8	Housing Back Brace (L.H.)	23769-1		Control Box Assembly (Three Phase)	14650
	Housing Back Brace (R.H.)	23769-2	21	Liquid Tight Connector	23779
9	Standoff Bracket Assembly	27514	22	Housing Cover Weldment	23741
10	Outer Lower Chute Side	9808	23	1/4 H.P. Motor (Single Phase)	20466
11	Inner Lower Chute Side	9807		1/2 H.P. Motor (Three Phase)	25333
12	Transition Piece	21051	24	Upper Housing Cover	14814
13	Spacer	21607	25	Drive Cover Weldment	23734

*See separate Parts List for individual components.

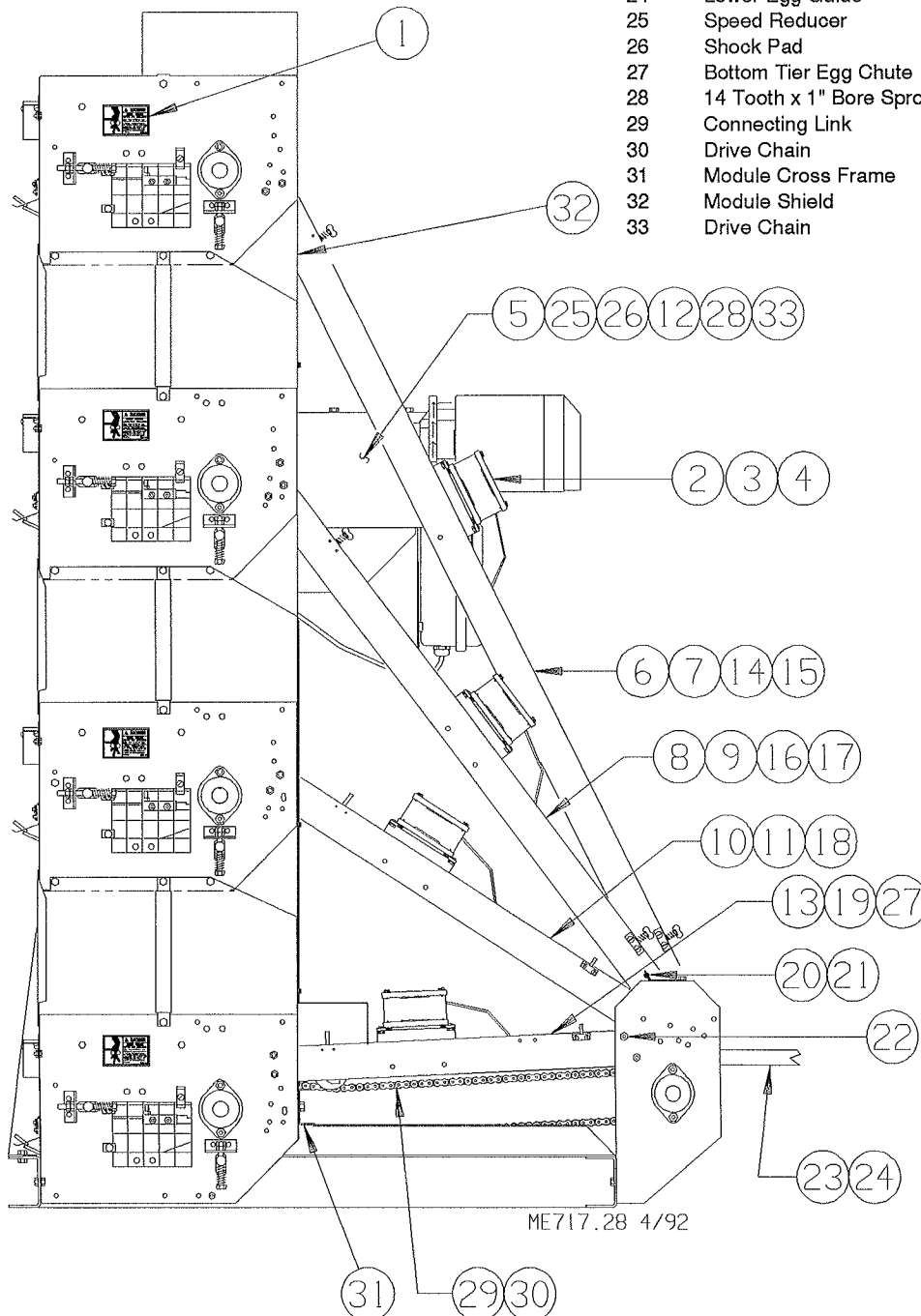


4-Hi Collector Assembly--Back View

<u>Item</u>	<u>Description</u>	<u>Part No.</u>	<u>Item</u>	<u>Description</u>	<u>Part No.</u>
1	Drive Housing Assembly	14638	14	Cross Brace	14549
2	1" Coupling	20269	15	Cross Brace	14547
3	Module Assembly (L.H.) (steel shafts)	9369-1	16	Module Support	14782
	Module Assembly (L.H.) (stainless shafts)	9369-3	17	Module Brace (R.H.)	14614-2
4	1" Connecting Shaft	21049-9	18	Twin Helix Screw	6980
5	Module Brace (L.H.)	14614-1	19	Module Assembly (R.H.) (steel shafts)	9369-2
6	1" Connecting Shaft	21049-2		Module Assembly (R.H.) (stainless shafts)	9369-4
7	1" Connecting Shaft	21049-6	20	1" Connecting Shaft	21049-8
8	Module Back Brace (L.H.)	14616-1	21	Gasket	6777
9	1/2" N.P.T. Hole Plug	23791	22	Junction Box	13973
10	Switch Box Cover	6776	23	Top Cover	24809
11	Top Back Brace	14551	24	Sprocket Cover	24808
12	Top Cross Brace	14548	25	Lower Cover	24807
13	Module Back Brace (R.H.)	14616-2			

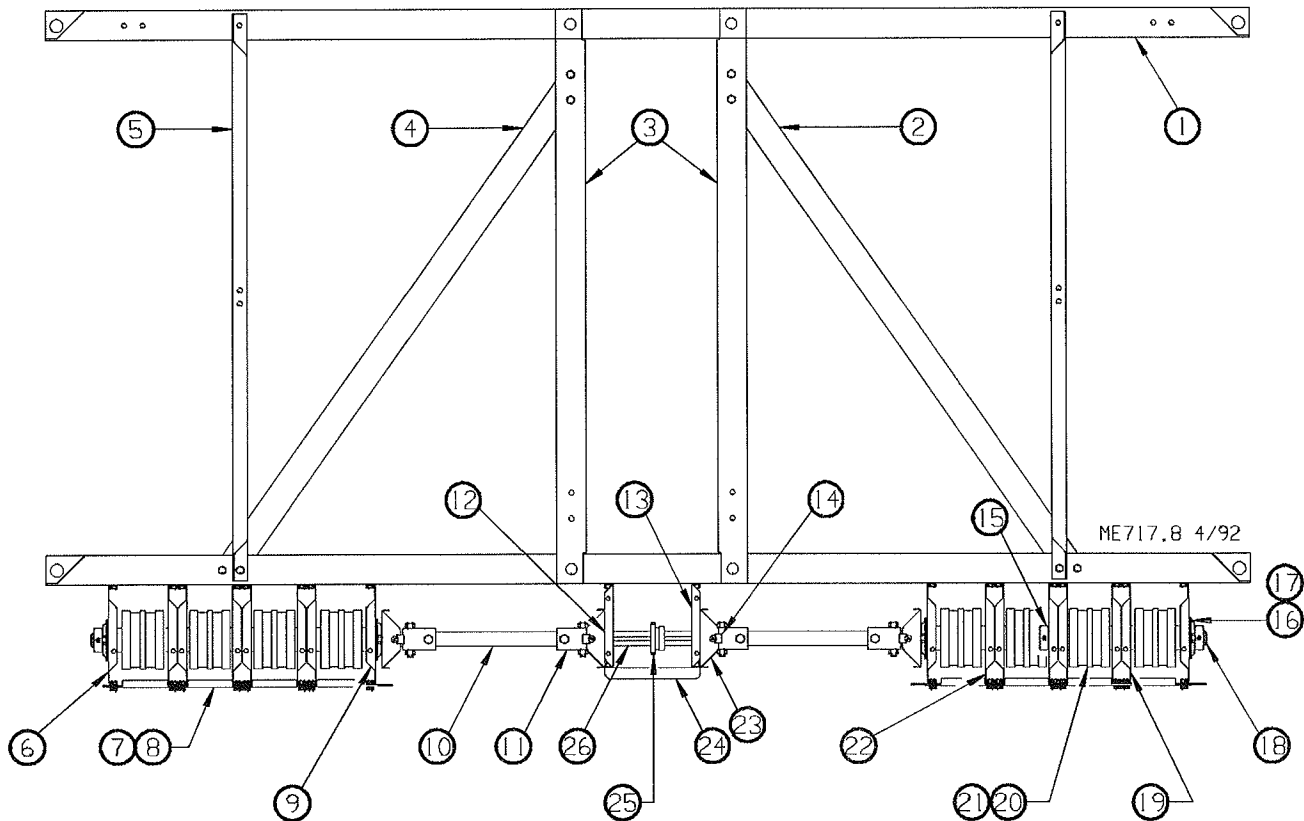
4-Hi Collector Assembly--Side View

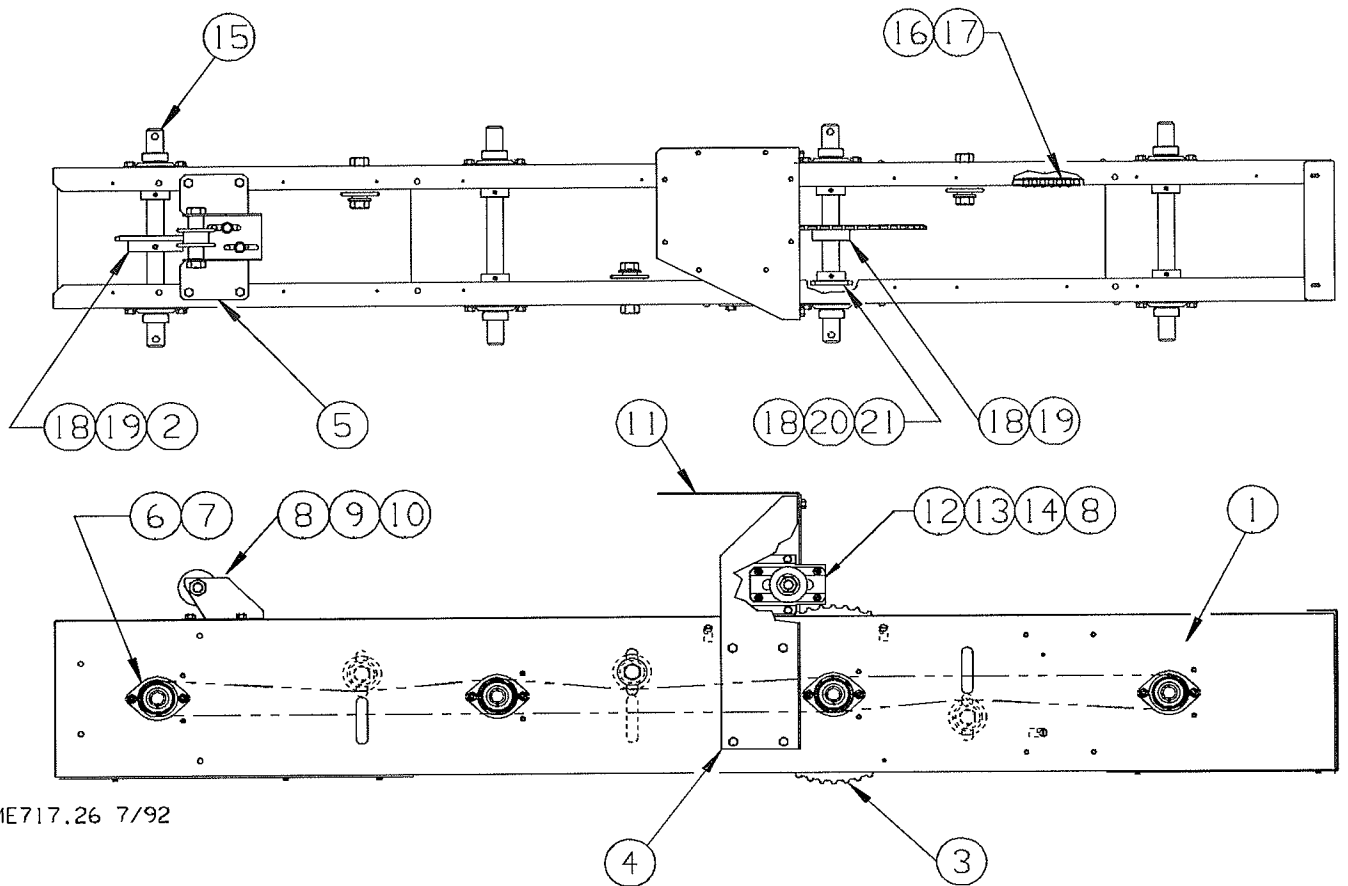
Item	Description	Part No.	Item	Description	Part No.
1	Danger Decal	2527-42	11	Inner Tier II Egg Chute	14541
2*	Counter Box Assembly (L.H.)	27576-1	12	1/4" Square Key	2419-3
3*	Counter Box Assembly (R.H.)	27576-2	13	Egg Chute Cover (Bottom Tier)	28094
4	Steel Spacer	21470	14	Egg Chute Cover Assembly (L.H.)	28099-1
5	Drive Cover Weldment	23734	15	Egg Chute Cover Assembly (R.H.)	28099-2
6	Escalator Belt Assembly	21057-15	16	Egg Chute Cover Assembly (L.H.)	28098-1
7	Upper Tier Egg Chute	25513	17	Egg Chute Cover Assembly (R.H.)	28098-2
8	Escalator Belt Assembly	21057-14	18	Egg Chute Cover (IT/II)	28095
9	Inner Tier I Egg Chute	25511	19	Escalator Belt Assembly	21057-5
10	Escalator Belt Assembly	21057-13	20	Lower Brace	14808
			21	Cushion Flap	14809
			22	Inside Chute Spacer	23727
			23	Sweep Stop	14834
			24	Lower Egg Guide	14819
			25	Speed Reducer	20235
			26	Shock Pad	20053
			27	Bottom Tier Egg Chute	14797
			28	14 Tooth x 1" Bore Sprocket	20390
			29	Connecting Link	20017
			30	Drive Chain	21045-4
			31	Module Cross Frame	14553
			32	Module Shield	23864
			33	Drive Chain	21045-12



4-Hi Collector Assembly--Top View

Item	Description	Part No.	Item	Description	Part No.
1	Main Frame	24819	12	Front Drive Side Panel L.H.	23732-1
2	Main Angle Brace	23749-2	13	Front Drive Side Panel R.H.	23732-2
3	Cross Frame	24813	14	Clip On Nut	20095
4	Main Angle Brace	23749-1	15	1" Set Collar	5759
5	Inner Cross Brace	23706	16	1" Flangette	20191-1
6	Side Panel R.H.	14542-2	17	1" Bearing	20191-2
7	Transition Holder	14554	18	Belt Drive Shaft	20572-4
8	Transition Spacer	14552	19	Inner Side Panel L.H.	28973-1
9	Side Panel L.H.	14542-1	20	Drive Roller	21028
10	1" Connecting Shaft	21049-10	21	1/4" Square Key	2419-3
11	1" Coupling	20269	22	Inner Side Panel R.H.	28973-2
			23	Drive Cover Bracket	9989
			24	Front Angle Brace	23733
			25	12 tooth x 1" Bore Sprocket	20086
			26	Front Drive Shaft	23767





ME717.26 7/92

4-Hi Drive Column: 14638

Item	Description	Part No.	Item	Description	Part No.
1	Drive Housing	14583	15	Drive Housing Shaft	23702
2	28 Tooth 1" Bore Sprocket	20201	16	Drive Chain	21045-5
3	70 Tooth 1" Bore Sprocket	14668	17	Connecting Link	20017
4	Motor Bracket (L.H.)	23707-1	18	1/4" Square Key	2419-3
	Motor Bracket (R.H.)	23707-2	19	5/16-18x5/8" Set Screw	5692
5	Escalator Idler Base	23736	20	14 Tooth 1" Bore Sprocket	20390
6	Bearing	20191-2	21	1/4-20x1/4" Set Screw	13189
7	Flangette	20191-1			
8*	Chain Idler Roller	20369			
9*	Idler Bracket	23737			
10*	Idler Bushing	23788			
11	Motor Base	23715			
12**	Idler Bracket	20047			
13**	Idler Bushing	21239			
14**	Idler Base	23735			

*These components may be ordered as an assembly under Chore-Time Part No. 23738.

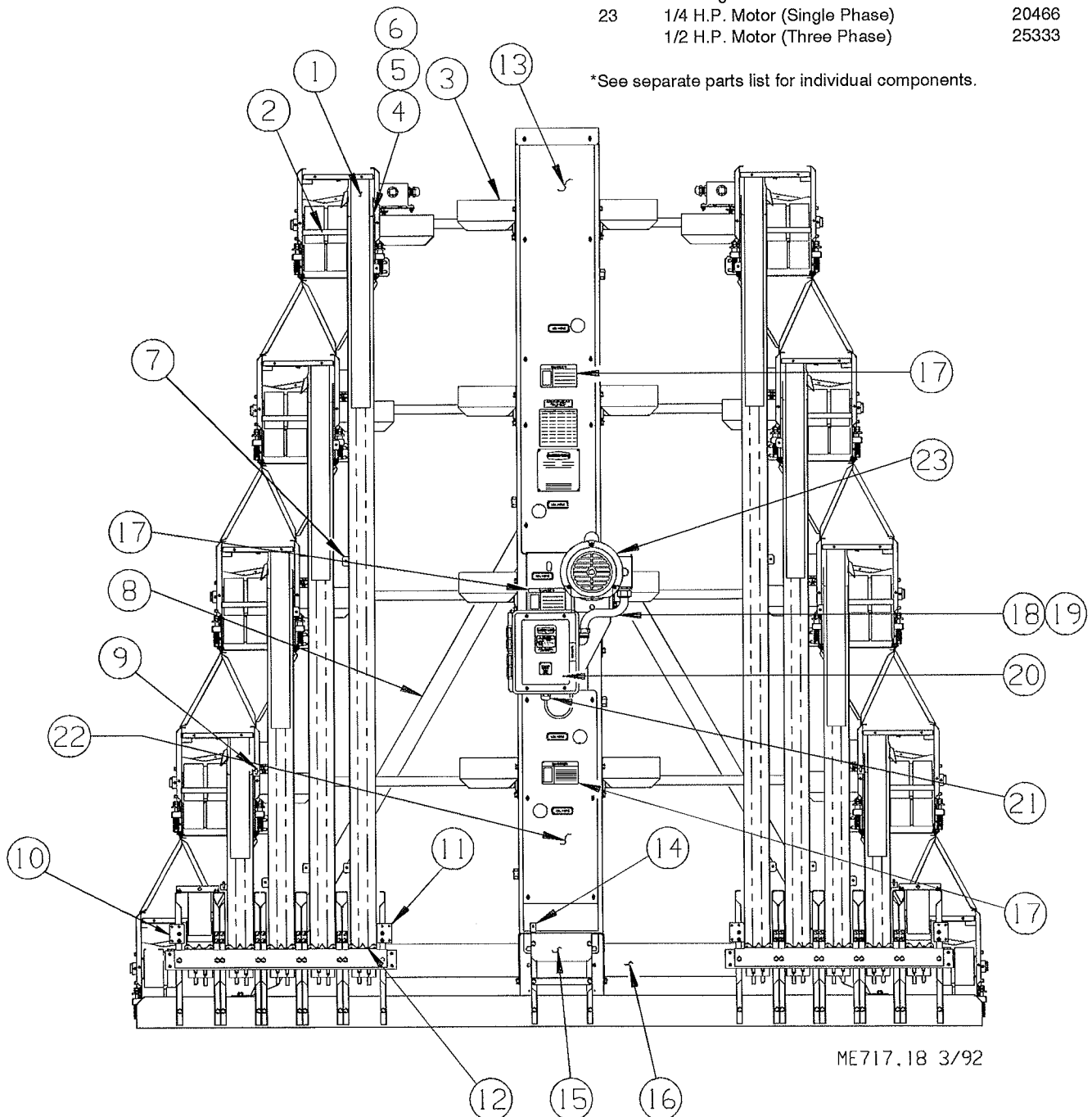
**These components may be ordered as an assembly under Chore-Time Part No. 23740.

5-Hi Collector Assembly--Front View

Item	Description	Part No.
1	Upper Egg Cushion	8850
2	Module Chute Spacer	14043
3	Connector Cover	23773
4	Upper Module Guide	23831
5	Foam Tape	20839
6	Spacer	23760
7	Side Mount	25394
8	Housing Back Brace (L.H.)	23769-1
	Housing Back Brace (R.H.)	23769-2

Item	Description	Part No.
9	Standoff Bracket Assembly	27514
10	Inner Lower Chute Side	9807
11	Outer Lower Chute Side	9808
12	Transition Piece	21051
13	Upper Housing Cover	28299
14	Sweep Brace	13952
15	Escalator Drive Cover	25922
16	Connector Cover	14789
17	CAUTION Decal	2527-10
18	1/2" Conduit Locknut	3357
19	Conduit Assembly	23821
20*	Control Box Assembly (Single Phase)	23722
	Control Box Assembly (Three Phase)	14650
21	Liquid Tight Connector	23779
22	Housing Cover Weldment	23741
23	1/4 H.P. Motor (Single Phase)	20466
	1/2 H.P. Motor (Three Phase)	25333

*See separate parts list for individual components.



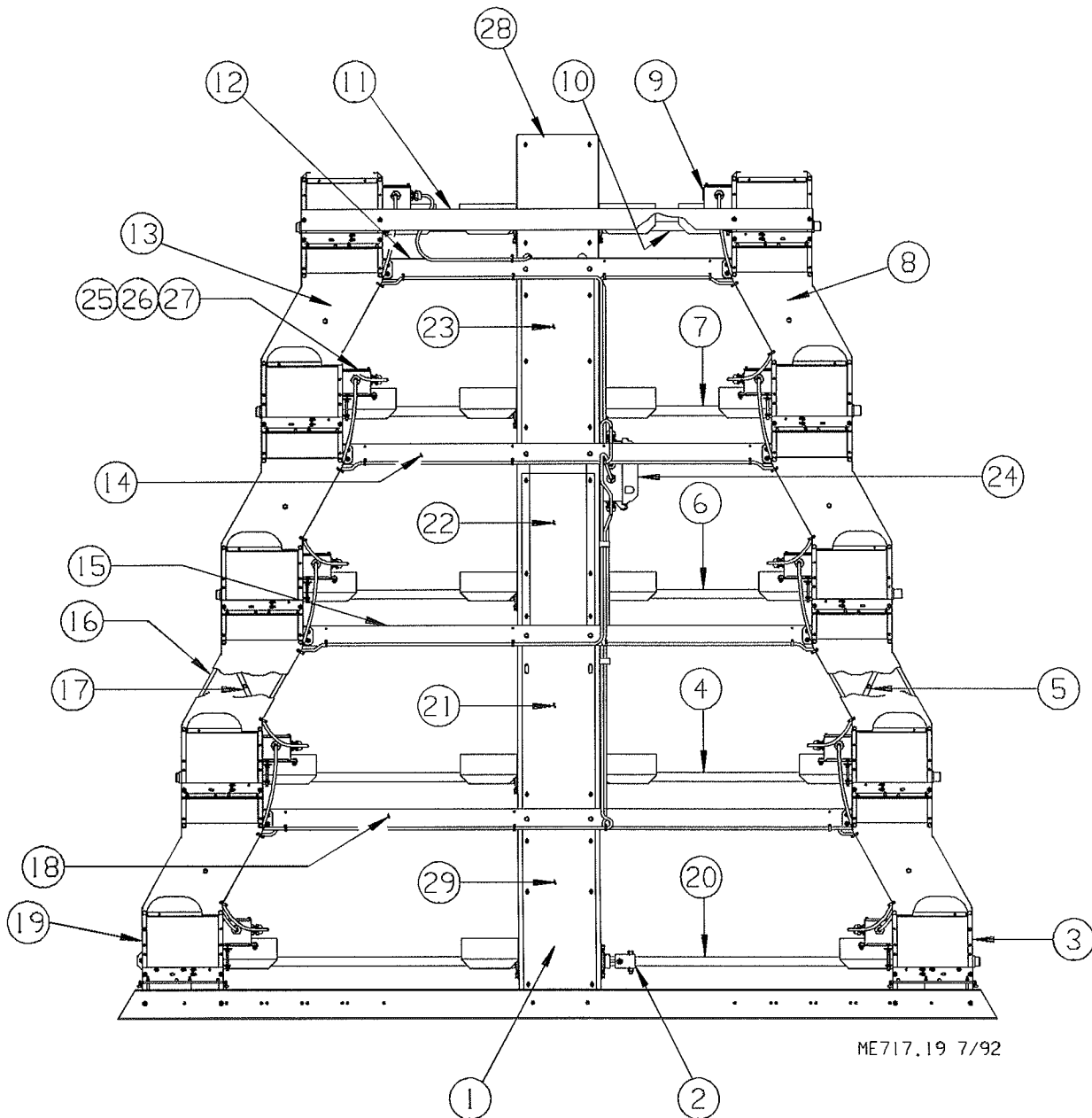
ME717.18 3/92

5-Hi Collector Assembly--Back View

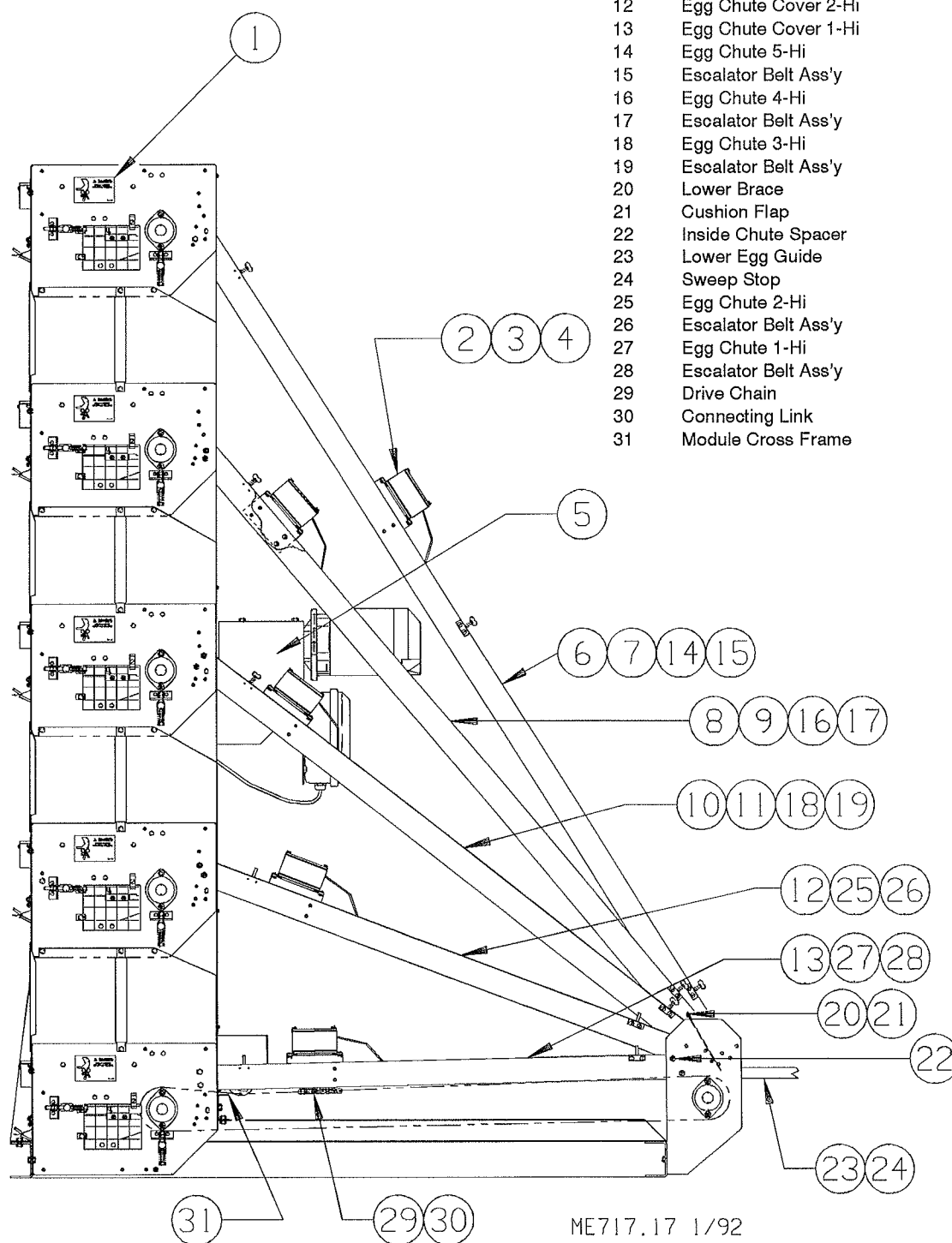
Item	Description	Part No.
1*	Drive Housing Assembly	28325
2	1" Coupling	20269
3*	Module Assembly L.H. (solid steel shafts)	9369-1
	Module Assembly L.H. (stainless stl. shafts)	9369-3
4	1" Connecting Shaft	21049-8
5	Module Brace L.H.	14614-1
6	1" Connecting Shaft	21049-9
7	1" Connecting Shaft	21049-23
8	Module Back Brace L.H.	14616-1
9	1/2" NPT Pipe Plug	23791
10	1" Connecting Shaft	21049-6
11	Top Back Brace	14551
12	Top Cross Brace	14548

Item	Description	Part No.
13	Module Back Brace R.H.	14616-2
14	Cross Brace	14549
15	Cross Brace	14547
16	Module Support	14782
17	Module Brace R.H.	14614-2
18	Cross Brace	28308
19*	Module Assembly R.H. (solid steel shafts)	9369-2
	Module Assembly R.H. (stainless stl shafts)	9369-4
20	1" Connecting Shaft	21049-20
21	Lower Cover	24807
22	Sprocket Cover	24808
23	Upper Cover	28306
24*	Junction Box Assembly	25910
25	Switch Box Cover	6776
26	Gasket	6777
27	Twin Helix Screws	6980
28	Top Cover	24809
29	Bottom Cover	24806

*See separate parts list for individual components.



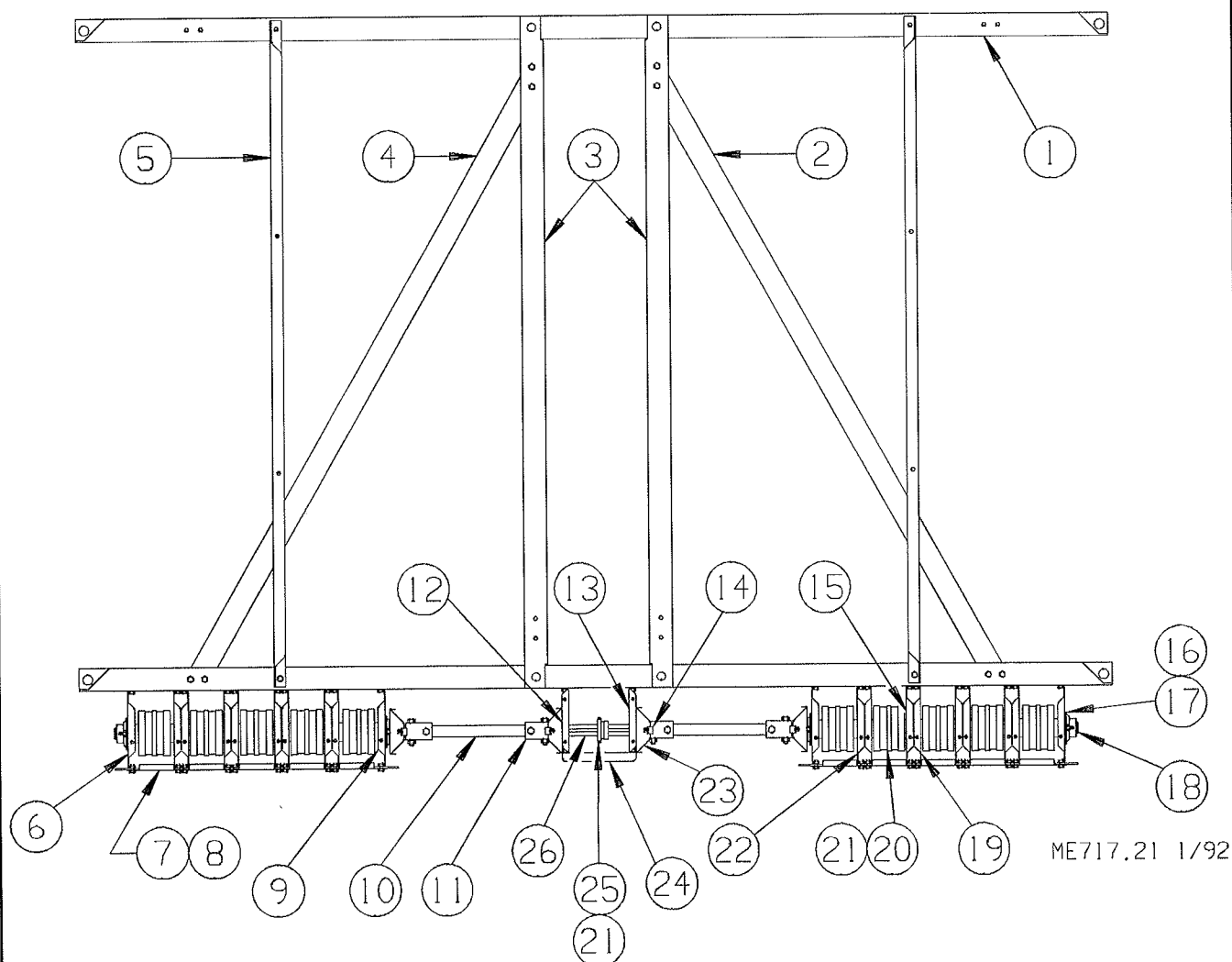
5-Hi Collector Assembly--Side View



Item	Description	Part No.
1	DANGER Decal	2527-42
2	Counter Box Assembly L.H.	27576-1
3	Counter Box Assembly R.H.	27576-2
4	Spacer	21470
5	Drive Cover Weldment	23734
6	Egg Chute Cover Ass'y 5-Hi L.H.	28310-1
7	Egg Chute Cover Ass'y 5-Hi R.H.	28310-2
8	Egg Chute Cover Ass'y 4-Hi L.H.	28298-1
9	Egg Chute Cover Ass'y 4-Hi R.H.	28298-2
10	Egg Chute Cover Ass'y 3-Hi L.H.	28296-1
11	Egg Chute Cover Ass'y 3-Hi R. H.	28296-2
12	Egg Chute Cover 2-Hi	28294
13	Egg Chute Cover 1-Hi	27628
14	Egg Chute 5-Hi	28305
15	Escalator Belt Ass'y	21057-29
16	Egg Chute 4-Hi	28304
17	Escalator Belt Ass'y	21057-28
18	Egg Chute 3-Hi	28303
19	Escalator Belt Ass'y	21057-27
20	Lower Brace	14808
21	Cushion Flap	14809
22	Inside Chute Spacer	23727
23	Lower Egg Guide	14819
24	Sweep Stop	14834
25	Egg Chute 2-Hi	28302
26	Escalator Belt Ass'y	21057-26
27	Egg Chute 1-Hi	25721
28	Escalator Belt Ass'y	21057-16
29	Drive Chain	21045-17
30	Connecting Link	20017
31	Module Cross Frame	28311

5-Hi Collector Assembly--Top View

<u>Item</u>	<u>Description</u>	<u>Part No.</u>	<u>Item</u>	<u>Description</u>	<u>Part No.</u>
1	Main Frame	28291	12	Front Drive Side Panel L.H.	23732-1
2	Main Angle Brace	25914-2	13	Front Drive Side Panel R.H.	23732-2
3	Cross Frame	25913	14	Clip On Nut	20095
4	Main Angle Brace	25914-1	15	1" Set Collar	5759
5	Inner Cross Brace	25915	16	1" Flangette	20191-1
6	Side Panel R.H.	14542-2	17	1" Bearing	20191-2
7	Transition Holder	28292	18	Belt Drive Shaft	20572-14
8	Transition Spacer	28293	19	Inner Side Panel L.H.	28973-1
9	Side Panel L.H.	14542-1	20	Drive Roller	21028
10	1" Connecting Shaft	21049-10	21	1/4" Square Key	2419-3
11	1" Coupling	20269	22	Inner Side Panel R.H.	28973-2
			23	Drive Cover Bracket	9989
			24	Front Angle Brace	23733
			25	12 tooth x 1" Bore Sprocket	20086
			26	Front Drive Shaft	23767



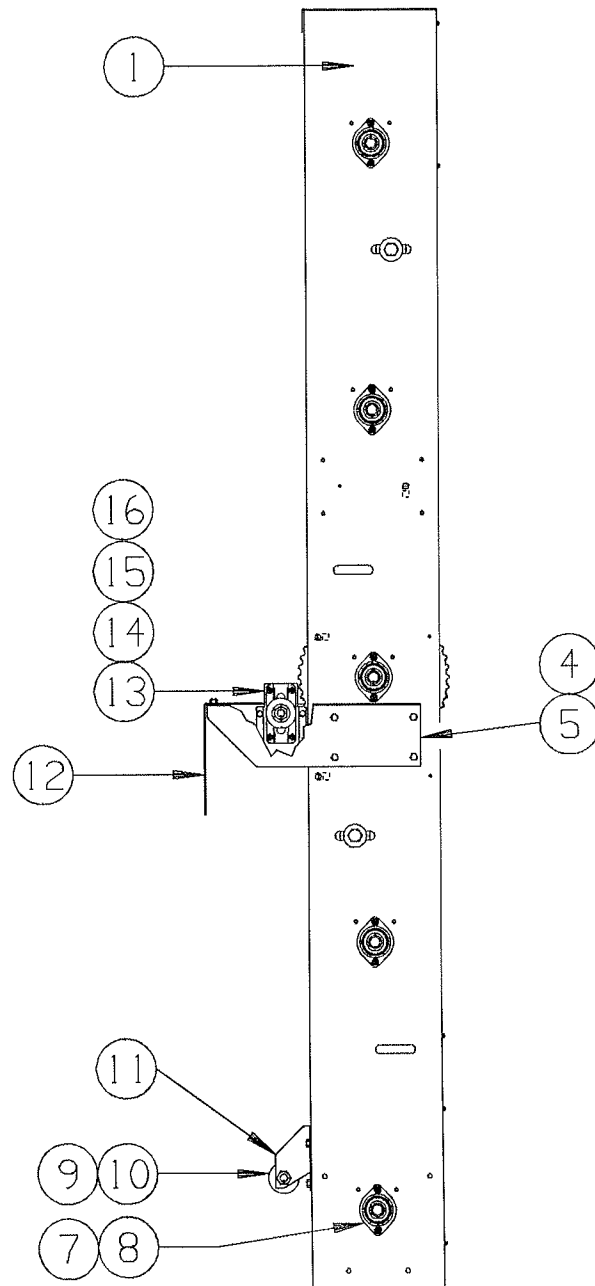
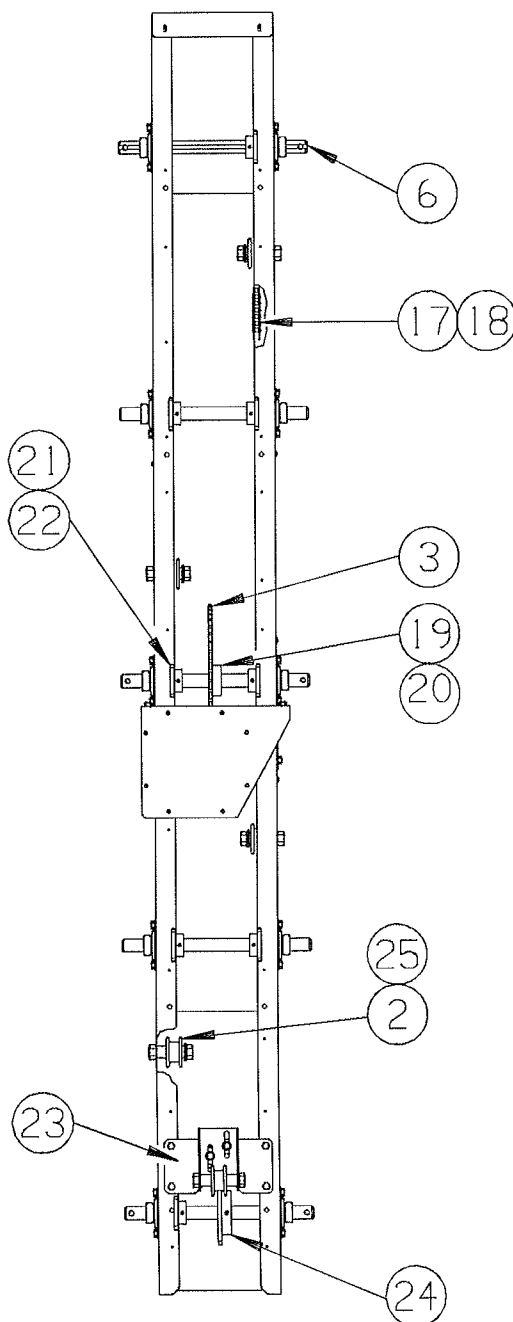
5-Hi Collector Drive Column

Item	Description	Part No.
1	Drive Housing	28321
2	Chain Idler Roller	20369
3	70 Tooth x 1" Bore Sprocket	14668
4	Motor Bracket L.H.	23707-1
5	Motor Bracket R.H.	23707-2
6	Drive Housing Shaft	23702
7	Flangette	20191-1
8	Bearing	20191-2
9*	Chain Idler Roller	20369
10*	Idler Bushing	23788
11*	Idler Bracket	23737
12	Motor Base	23715
13**	Idler Bracket	20047

Item	Description	Part No.
14**	Chain Idler Roller	20369
15**	Idler Bushing	21239
16**	Idler Base	23735
17	Drive Chain	20145-9
18	Connecting Link	20017
19	1/4" Square Key	2419-3
20	5/16-18 Set Screw	5692
21	1/4-20 Set Screw	13189
22	14 Tooth x 1" Bore Sprocket	20390
23	Escalator Idler Base	23736
24	28 Tooth x 1" Bore Sprocket	20201
25	Idler Bushing	21239

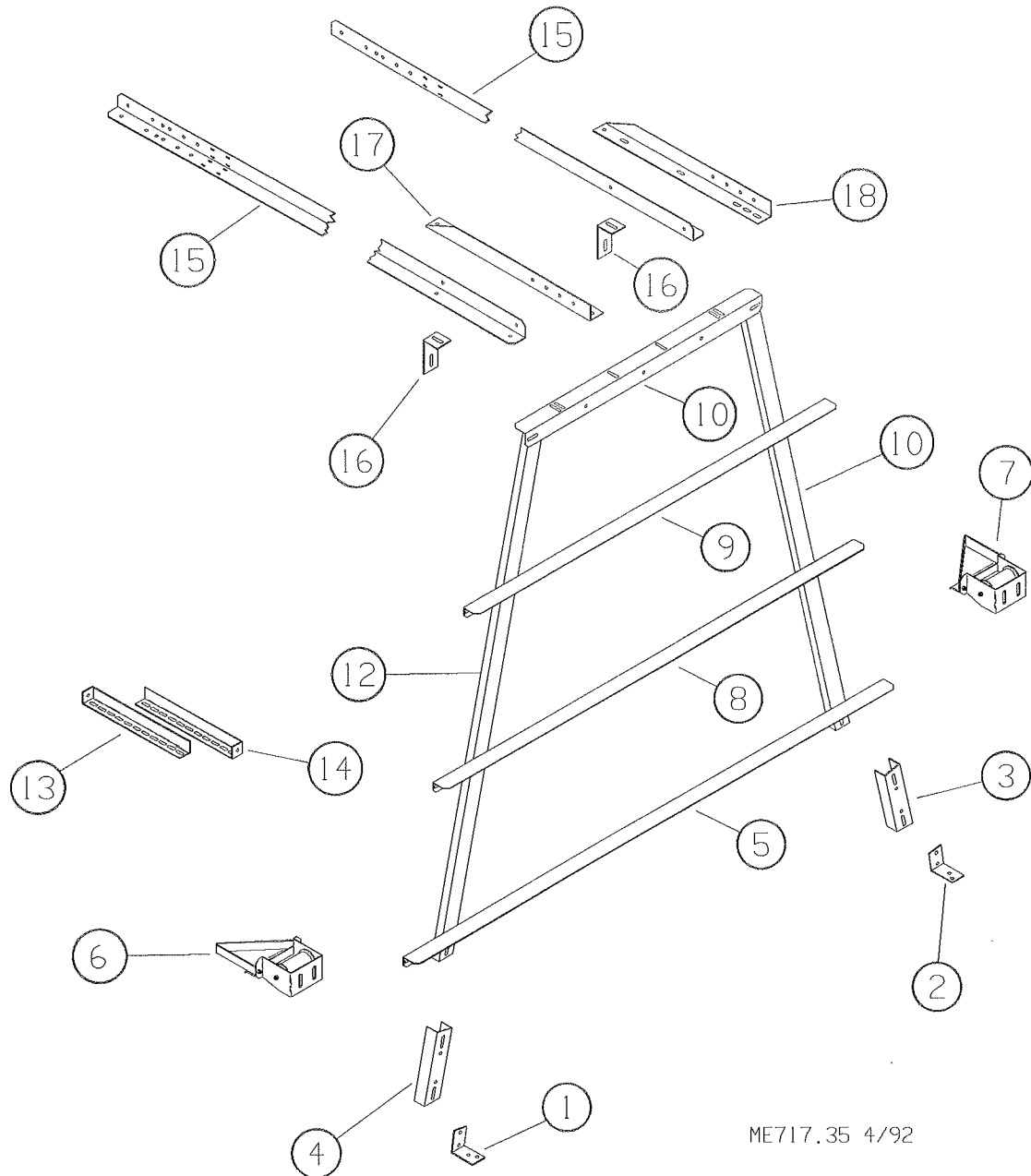
*Order as an assembly under Part No. 23738 Idler Bracket Ass'y.

**Order as an assembly under Part No. 23840 Idler Bracket Ass'y.



ME717.20 7/92

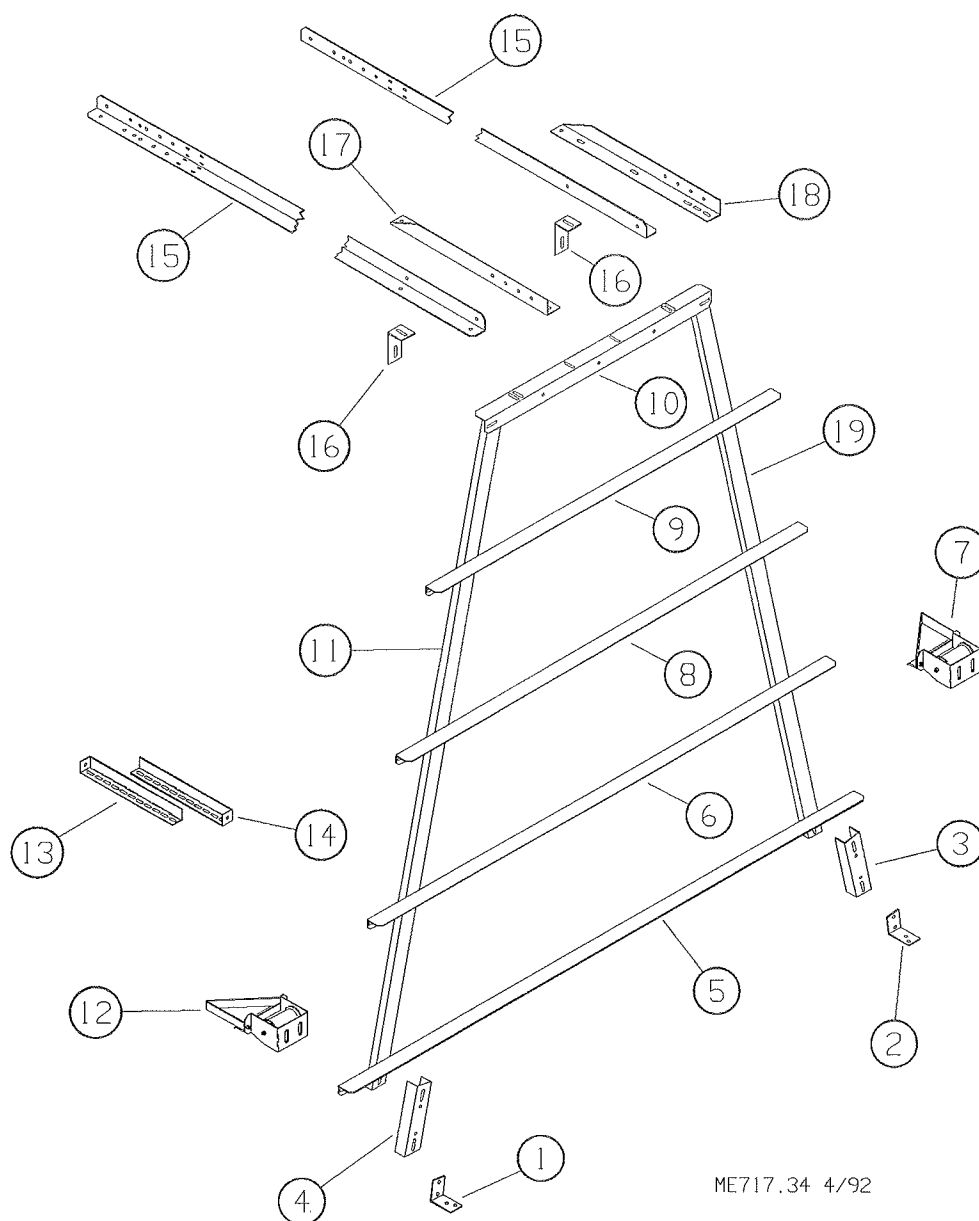
24018 Three High Rear Return Framing Kit



Item	Description	Part No.	Item	Description	Part No.
1	End Base (L.H.)	15181-1	10	Rear Return "A" Frame	24016-1
2	End Base (R.H.)	15181-2	11	End Brace Angle	14794
3	Leg Riser (R.H.)	14813-2	12	Rear Return "A" Frame	24016-2
4	Leg Riser (L.H.)	14813-1	13	End Brace	21645
5	Rear Return Cross Frame	14804	14	End Brace	21644
6*	Rear Return Assembly (R.H.)	20217-2	15	Power End Horizontal Brace	21659
7*	Rear Return Assembly (L.H.)	20217-1	16	Brace Angle Clip	14785
8	Rear Return Cross Frame	14805	17	Horizontal Mid-Brace	13061-2
9	Rear Return Cross Frame	14806	18	Horizontal Mid-Brace	13061-1

*These components are not included in the 24018 R.R. Framing Kit.

14579 Four High Rear Return Framing Kit

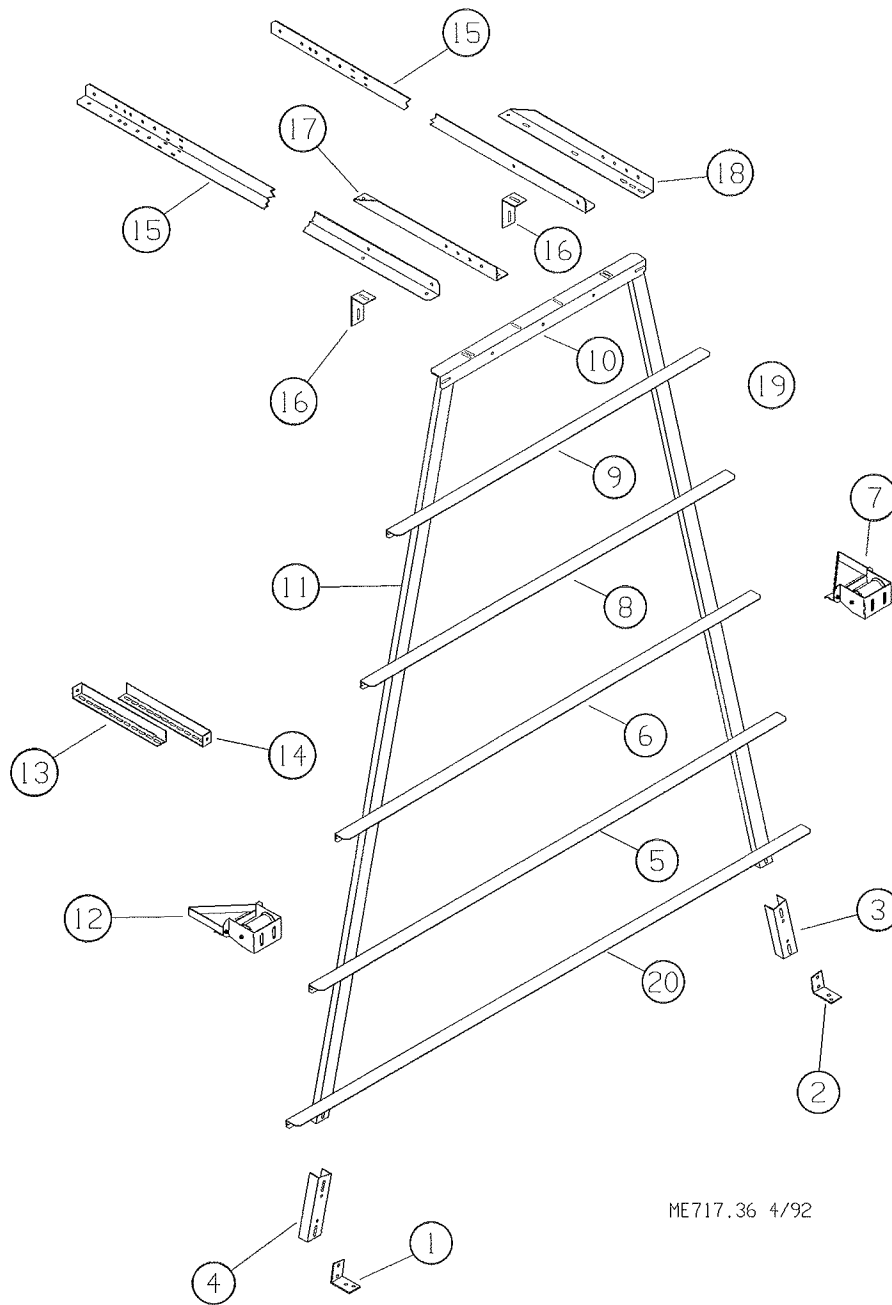


ME717.34 4/92

Item	Description	Part No.	Item	Description	Part No.
1	End Base (L.H.)	15181-1	11	Rear Return "A" Frame	14796-2
2	End Base (R.H.)	15181-2	12*	Rear Return Assembly (R.H.)	20217-2
3	Leg Riser (R.H.)	14813-2	13	End Brace	21645
4	Leg Riser (L.H.)	14813-1	14	End Brace	21644
5	Rear Return Cross Frame	14803	15	Power End Horizontal Brace	21659
6	Rear Return Cross Frame	14804	16	Brace Angle Clip	14785
7*	Rear Return Assembly (L.H.)	20217-1	17	Horizontal Mid-Brace	13061-2
8	Rear Return Cross Frame	14805	18	Horizontal Mid-Brace	13061-1
9	Rear Return Cross Frame	14806	19	Rear Return "A" Frame	14796-1
10	End Brace Angle	14794			

*These components are not included in the 14579 R.R. Framing Kit.

28527 Five High Rear Return Framing Kit



ME717.36 4/92

Item	Description	Part No.	Item	Description	Part No.
1	End Base (L.H.)	15181-1	12*	Rear Return Assembly (R.H.)	20217-2
2	End Base (R.H.)	15181-2	13	End Brace	21645
3	Leg Riser (R.H.)	14813-2	14	End Brace	21644
4	Leg Riser (L.H.)	14813-1	15	Power End Horizontal Brace	21659
5	Rear Return Cross Frame	14803	16	Brace Angle Clip	14785
6	Rear Return Cross Frame	14804	17	Horizontal Mid-Brace	13061-2
7*	Rear Return Assembly (L.H.)	20217-1	18	Horizontal Mid-Brace	13061-1
8	Rear Return Cross Frame	14805	19	Rear Return "A" Frame	28529-1
9	Rear Return Cross Frame	14806	20	Rear Return Cross Frame	28527
10	End Brace Angle	14794			
11	Rear Return "A" Frame	28529-2			

*These components are not included in the 28527 R.R. Framing Kit.

Trouble Shooting Guide

Symptom #1: Collector stops and will not run.

- Potential problem and/or fix:
1. Make sure switch on Collector Control is 'ON.'
 2. Make sure switch on Station Control is 'ON.'
 3. Check Slack Belt Switches. Make sure egg belt is properly tracking through the module.
 4. If the cross conveyor is equipped with Flow Controls, make sure the Flow Control Paddle is free.
 5. Check power supply.
 6. Check fuse in Collector Control.

Symptom #2: Collector runs on manual, but not on remote.

- Potential problem and/or fix:
1. Check Slack Belt Switch in each module.
 2. If the cross conveyor is equipped with Flow Controls, make sure the Flow Control Paddle is free.

Symptom #3: Egg Belt runs unevenly (jerks).

- Potential problem and/or fix.
1. Check for dirt build-up on drive and Idler Roller in Module.
 2. Check for dirt build-up on Idler Roller in Rear Return.
 3. Check for bad splices catching in Module, Egg Tray, or Belt Return Wire.
 4. Check tension on Idler Roller. Adjust if necessary.
 5. Check chains and sprockets in Drive Housing for rust and wear.

Symptom #4: Cleated Belts don't run, but Egg Belt does.

- Potential problem and/or fix.
1. Check Drive Chain under Escalator Drive Cover.
 2. Bolt(s) sheared or missing in coupling(s).
 3. Key(s) sheared or missing in Lower Drive Roller.

Symptom #5: One Cleated Belt does not run.

- Potential problem and/or fix.
1. Check spring tension on Idler Shaft--spring compressed to 1" (25 mm) length.
 2. Check for dirt build-up under belt.
 3. Key sheared or missing in Lower Drive Roller.

Symptom #6: Cleated Belts run, but Egg Belts do not.

- Potential problem and/or fix.
1. Check for key(s) missing or sheared in Drive Roller.
 2. Check for sheared or missing bolt(s) in Drive Coupling(s).
 3. Check for broken Drive Chains.

Symptom #7: Egg Belt not tracking properly.

- Potential problem and/or fix.
1. Adjust main Drive Shaft Bearings to get correct tracking.

Symptom #8: Collector runs unevenly.

- Potential problem and/or fix.
1. Oil all chains.

WARRANTY INFORMATION

Chore-Time Equipment warrants each new product manufactured by it to be free from defects in material or workmanship for one year from the date of initial installation by the original purchaser. If such a defect is found by Chore-Time to exist within the one year period, Chore-Time will, at its option, (a) repair or replace such product free of charge, F.O.B. the factory of manufacture, or (b) refund to the original purchaser the original purchase price, in lieu of such repair or replacement.

Additional extended warranties are herewith provided to the original purchaser as follows:

1. RLX Fans, less motors, for three years from date of installation.
- *2. Poultry feeder pans that become unusable within five years from date of installation. Warranty prorated after three years usage.
3. MEAL-TIME® Hog Feeder pans that become unusable within five years of installation.
4. Rotating centerless augers, excluding applications involving High Moisture Corn (exceeding 18%), for ten years from date of installation. Note: MULTIFLO® and applications involving High Moisture Corn are subject to a one year warranty.
5. Chore-Time manufactured roll-formed steel auger tubes for ten years from date of installation.
- *6. Laying cages that become unusable within ten years. Warranty prorated after three years usage.
7. ULTRAFLO® Auger and ULTRAFLO® Feed Trough (except ULTRAFLO® Trough Liners) are warranted for a period of five (5) years from date of original purchase against repeated breakage of the auger or wear-through of the feed trough.

Conditions and limitations:

1. The product must be installed and operated in accordance with instructions published by Chore-Time or warranty will be void.
2. Warranty is void if all components of a system are not supplied by Chore-Time.
3. This product must be purchased from and installed by an authorized Chore-Time dealer or certified representative thereof, or the warranty will be void.
4. Malfunctions or failure resulting from misuse, abuse, negligence, alteration, accident, or lack of proper maintenance shall not be considered defects under this warranty.
5. This warranty applies only to systems for the care of poultry and livestock. Other applications in industry or commerce are not covered by this warranty.

Chore-Time shall not be liable for any consequential or special damage which any purchaser may suffer or claim to have suffered as a result of any defect in the product. "Consequential" or "special damages" as used herein include, but are not limited to, lost or damaged products or goods, costs of transportation, lost sales, lost orders, lost income, increased overhead, labor and incidental costs and operational inefficiencies.

THIS WARRANTY CONSTITUTES CHORE-TIME'S ENTIRE AND SOLE WARRANTY AND CHORE-TIME EXPRESSLY DISCLAIMS ANY AND ALL OTHER WARRANTIES, INCLUDING, BUT NOT LIMITED TO, EXPRESS AND IMPLIED WARRANTIES AS TO MERCHANTABILITY, FITNESS FOR PARTICULAR PURPOSE SOLD AND DESCRIPTION OR QUALITY OF THE PRODUCT FURNISHED HEREUNDER.

Any exceptions to this warranty must be authorized in writing by an officer of the company. Chore-Time reserves the right to change models and specifications at any time without notice or obligation to improve previous models.

*See separate "WARRANTY ADDITION" as to these products

CHORE-TIME EQUIPMENT, A Division of CTB, Inc.
P.O. Box 2000, Milford, Indiana 46542-2000 U.S.A.

Contact your nearby Chore-Time distributor or representative for additional parts and information.
Chore-Time Equipment, A division of CTB, Inc.
P.O. Box 2000
Milford, Indiana 46542-2000

printed in the U.S.A.