

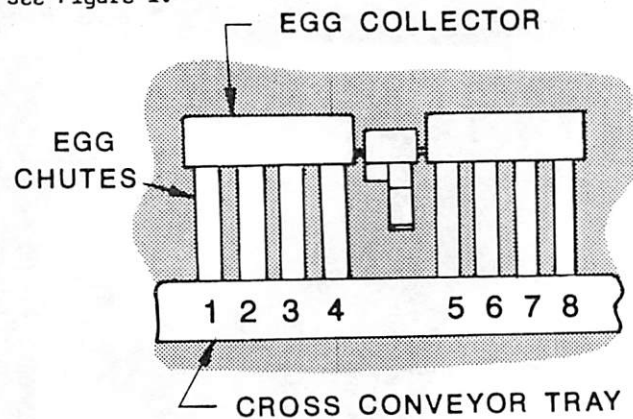
### DC-4 Egg Sensor Assembly Kit

The 24720 DC-4 Sensor Assembly Kit contains the parts required to install egg counters on 4-High Dura-Cage Egg Collectors. One kit is required for each collector.

The 24720 DC-4 Sensor Assembly Kit contains:

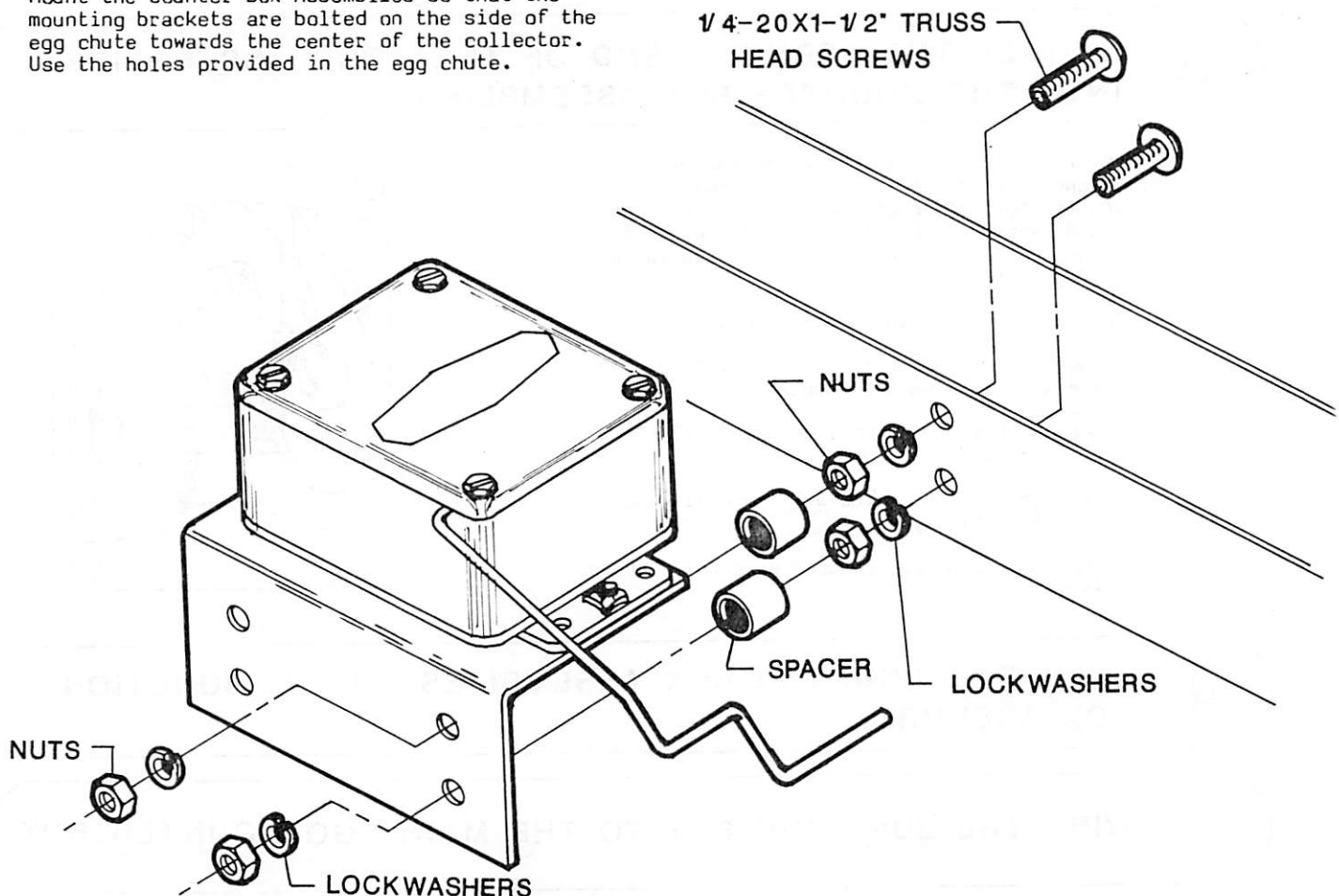
Qty.	Description	Part No.
4	Right Hand Counter Box Ass'y	14420-2
4	Left Hand Counter Box Ass'y	14420-1
16	1/4-20x1-1/2" Truss Head Screw	4424-6
16	Steel Spacer	21470
36	1/4" Lockwasher	1667
32	1/4-20 Hex Nut	751
1	104" Cord Assembly	4999-37
4	93" Cord Assembly	4999-36
1	127" Cord Assembly	4999-39
2	114" Cord Assembly	4999-38
36	Cable Tie	6635
1	Junction Box Assembly	13973
4	1/4-20x1/2 Hex Head Screw	1487

Before beginning to install the sensors, each egg chute of the collector needs to be numbered. The standard numbering system is to number the egg chutes from 1 to 8 --starting at the left, as you face the collector. See Figure 1.

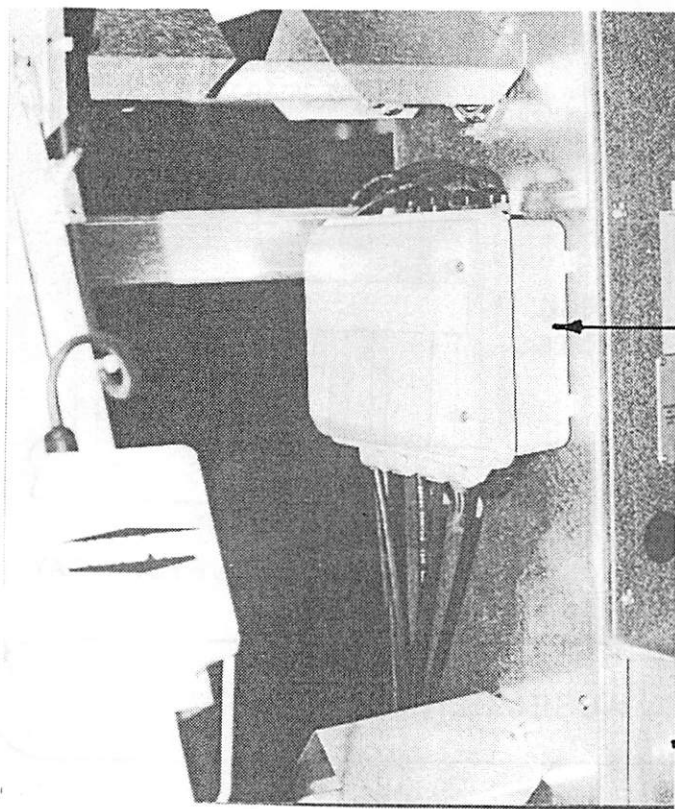


## 1 INSTALL THE COUNTER BOX ASSEMBLIES

Mount the Counter Box Assemblies so that the mounting brackets are bolted on the side of the egg chute towards the center of the collector. Use the holes provided in the egg chute.



## 2 INSTALL THE JUNCTION BOX ASSEMBLY



The Junction Box Assembly is bolted to one side of the Drive Column near the top shaft. Use four 1/4-20x1/2 Truss Head Screws and lockwashers.

JUNCTION BOX ASSEMBLY

DRIVE COLUMN

## 3 INSTALL THE TERMINAL END OF THE CORD ASSEMBLIES INTO THE COUNTER BOX ASSEMBLIES

Insert the Cord Assemblies through the water-proof connector so that the spade terminals are inside the box. Connect the terminals to the switch as shown. Route the Cord Assemblies so that they don't interfere with the operation or servicing of the equipment.

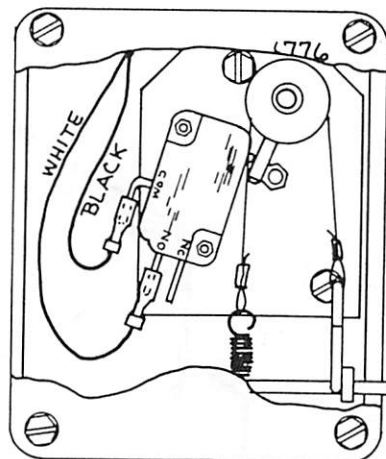
There are four different cord lengths.

Counters on egg chutes number 1, 3, 4, & 5 use a 93 inch Cord Assembly.

The Counter on egg chute 2 uses a 104 inch Cord Assembly.

Counters on egg chutes 6 & 8 use 114 inch Cord Assemblies.

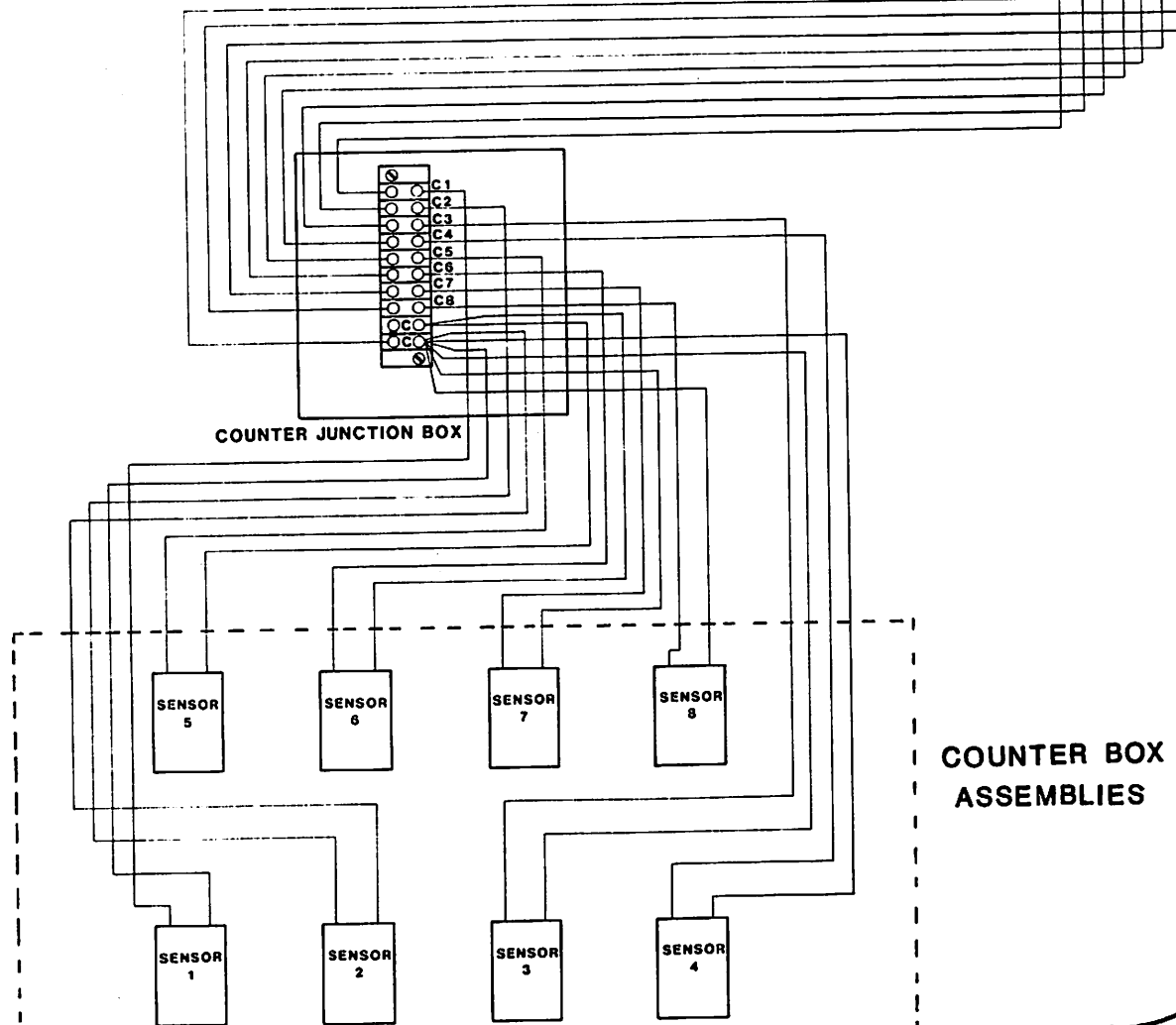
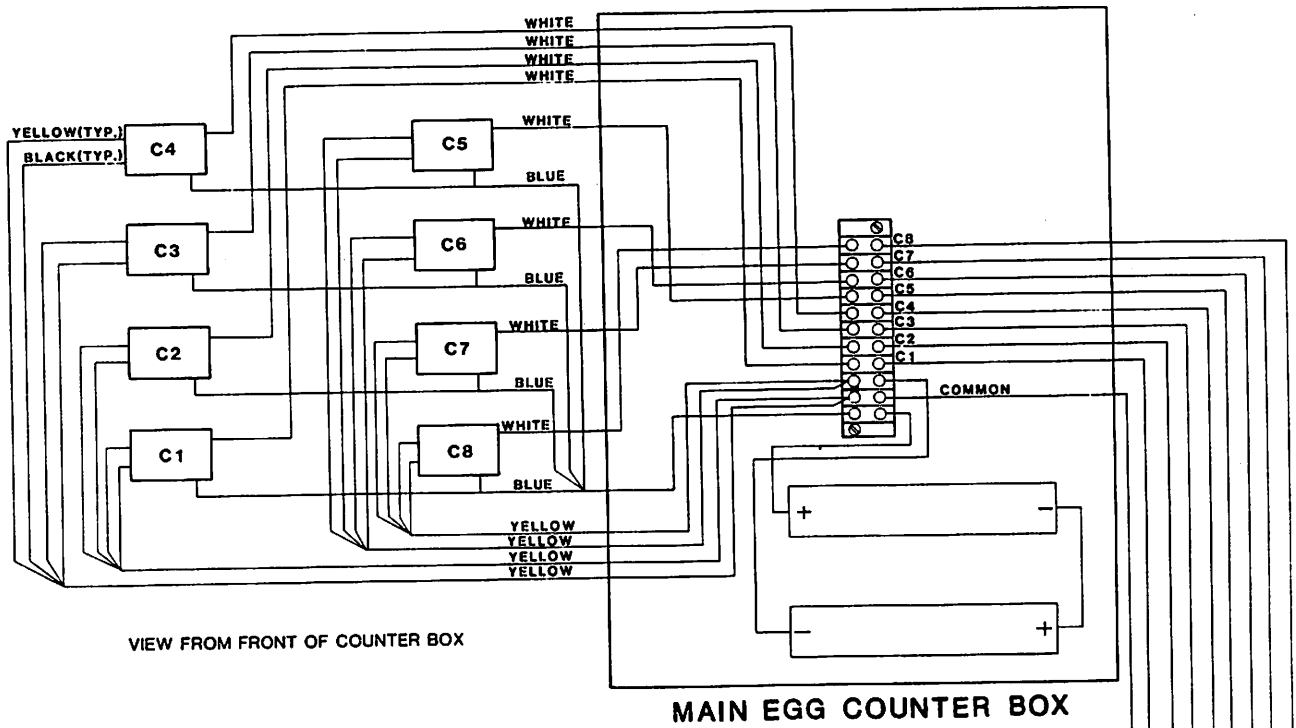
The Counter on egg chute 7 uses a 127" Cord Assembly.



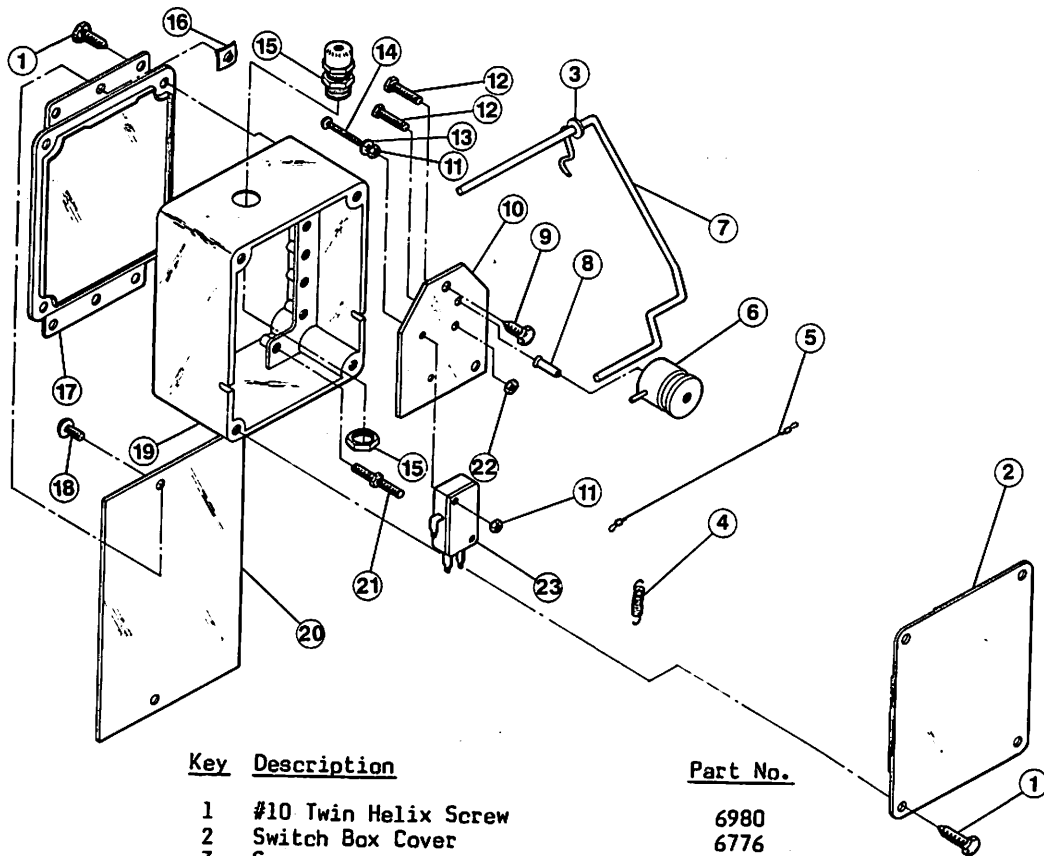
## 4 WIRE THE COUNTER BOX ASSEMBLIES TO THE JUNCTION BOX ASSEMBLY

## 5 WIRE THE JUNCTION BOX TO THE MAIN EGG COUNTER BOX

# EGG COUNTER WIRING DIAGRAM



# Parts List



Key	Description	Part No.
1	#10 Twin Helix Screw	6980
2	Switch Box Cover	6776
3	Spacer	14415
4	Extension Spring	14418
5	String Assembly	14581
6	Sliding Roll Assembly	13637
7	Sensor Arm Weldment...Left-hand	14417-1
	...right-hand	14417-2
8	10-32 Blind Rivet Nut	4587
9	#12x1/2 Sheet Metal Screw	4830
10	Mounting Plate	13627
11	6-32 Nut	771
12	10-32x1" Screw	4418-1
13	Washer	2955-7
14	6-32x7/8" Screw	1921
15	Liquid Tight Connector	13477
16	Stamped Nut	135
17	Mounting Cover	6956
18	10-24x5/8" Truss Head Screw	501A
19	Counter Box...left-hand	13640-1
	...right-hand	13640-2
20	Sensor Bracket	14795
21	10-32 Stud	7007
22	10-32 Nut	4297
23	Switch	13706

The complete left-hand Egg Counter Assembly is  
CHORE-TIME part number 14420-1.

The complete right-hand Egg Counter Assembly is  
CHORE-TIME part number 14420-2.

Contact your nearby CHORE-TIME distributor or representative for additional information or parts.

Chore-Time Equipment, A Division of CTB, Inc.  
P.O. Box 2000, Milford, Indiana 46542 U.S.A.

Printed in U.S.A.