

CHORE-TIME



SOFT-TOUCH FINGER COLLECTOR INSTALLATION MANUAL

**INSTALLATION • WIRING DIAGRAM • PARTS LIST •
MAINTENANCE AND TROUBLE-SHOOTING GUIDE**

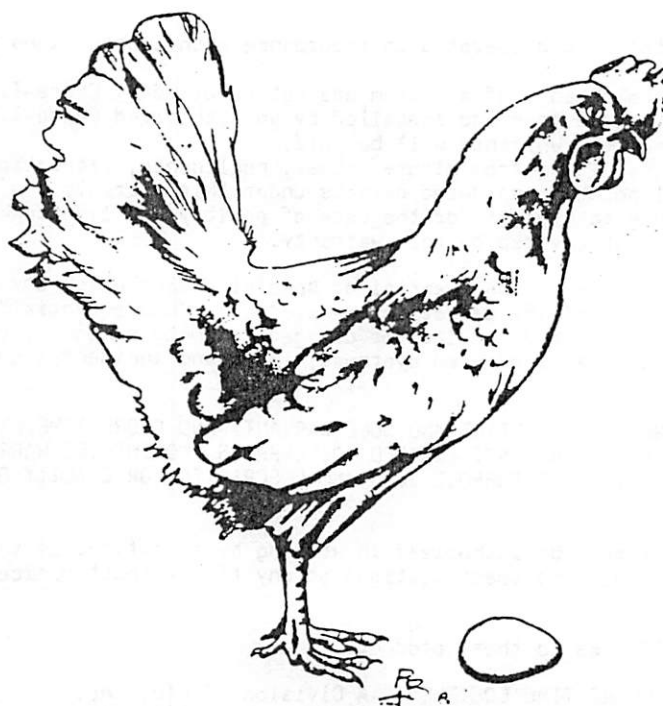


TABLE OF CONTENTS

Topic	Page
Warranty Information	2
Planning the Installation	3
Positioning the Collectors	4
Installing Egg Trays	5
Installing Collector End Framing	5
Installing Rear Return Framing	6
Installing Rear Return Assembly	6
Installing 4" Egg Belt	7
Egg Tray Brace Installation	8
Installing Egg Sweep and Egg Cross Braces	8
Installing Sweep Installation	8
Installing Rod Transfer Kit	8
Installing Collector Controls	8
Wiring Diagram	10-13
Parts List	14-25
Maintenance and Adjustments	26

READ ALL INSTALLATION
INSTRUCTIONS CAREFULLY
BEFORE BEGINNING



WARRANTY INFORMATION

Chore-Time Equipment warrants each new product manufactured by it to be free from defects in material or workmanship for one year from the date of initial installation by the original purchaser. If such a defect is found by Chore-Time to exist within the one-year period, Chore-Time will, at its option, (a) repair or replace such product free of charge, F.O.B. the factory of manufacture, or (b) refund to the original purchaser the original purchase price, in lieu of such repair or replacement.

Additional extended warranties are herewith provided to the original purchaser as follows:

1. RLX Fans, less motors, for three years from date of installation.
2. Poultry feeder pans that become unusable within five years from date of installation. Warranty pro-rated after three years' usage.*
3. Rotating centerless augers, excluding applications involving High Moisture Corn (exceeding 18%), for ten years from date of installation. Applications involving High Moisture Corn are subject to a one-year warranty.
4. Chore-Time manufactured roll-formed steel auger tubes for ten years from date of installation.
5. Laying cages that become unusable within ten years. Warranty prorated after three years usage.*
6. ULTRAFLO® Auger and ULTRAFLO® Feed Trough are warranted for a period of five (5) years from date of original purchase against repeated breakage of the auger or wear-through of the feed trough.

Conditions and limitations:

1. The product must be installed and operated in accordance with instructions published by Chore-Time or warranty will be void.
2. Warranty is void if all components of a system are not supplied by Chore-Time.
3. This product must be purchased from and installed by an authorized Chore-Time dealer or certified representative thereof, or the warranty will be void.
4. Malfunctions or failure resulting from misuse, abuse, negligence, alteration, accident, or lack of proper maintenance shall not be considered defects under this warranty.
5. This warranty applies only to systems for the care of poultry and livestock. Other applications in industry or commerce are not covered by this warranty.

Chore-Time shall not be liable for any consequential or special damage which any purchaser may suffer or claim to have suffered as a result of any defect in the product. "Consequential" or "special damages" as used herein include, but are not limited to, lost or damaged products or goods, costs of transportation, lost sales, lost orders, lost income, increased overhead, labor and incidental costs and operational inefficiencies.

THIS WARRANTY CONSTITUTES CHORE-TIME'S ENTIRE AND SOLE WARRANTY AND CHORE-TIME EXPRESSLY DISCLAIMS ANY AND ALL OTHER WARRANTIES, INCLUDING, BUT NOT LIMITED TO, EXPRESS AND IMPLIED WARRANTIES AS TO MERCHANTABILITY, FITNESS FOR PARTICULAR PURPOSE SOLD AND DESCRIPTION OR QUALITY OF THE PRODUCT FURNISHED HEREUNDER.

Any exceptions to this warranty must be authorized in writing by an officer of the company. Chore-Time reserves the right to change models and specifications at any time without notice or obligation to improve previous models.

*See separate "WARRANTY ADDITION" as to these products.

CHORE-TIME EQUIPMENT, A Division of CTB, Inc.
P.O. Box 2000, Milford, Indiana 46542-2000 U.S.A.

PLANNING THE INSTALLATION

Dimensions are shown for the 4-high Finger Egg Collector in Figure 1. Use these dimensions when planning the Collector and Cross Conveyor installation.

Finger Egg Collectors require a minimum opening width of 49" (1.2 m) to move the unit into the building.

Finger Collectors require anchor spacing as shown in Figure 1. Note that this spacing is different than the required spacing for cage floor supports.

The Finger Collectors must be a minimum of 36" (914 mm) in front of the cage row and should set approximately level with the cage bottoms.

**READ ALL INSTALLATION
INSTRUCTIONS CAREFULLY
BEFORE BEGINNING**

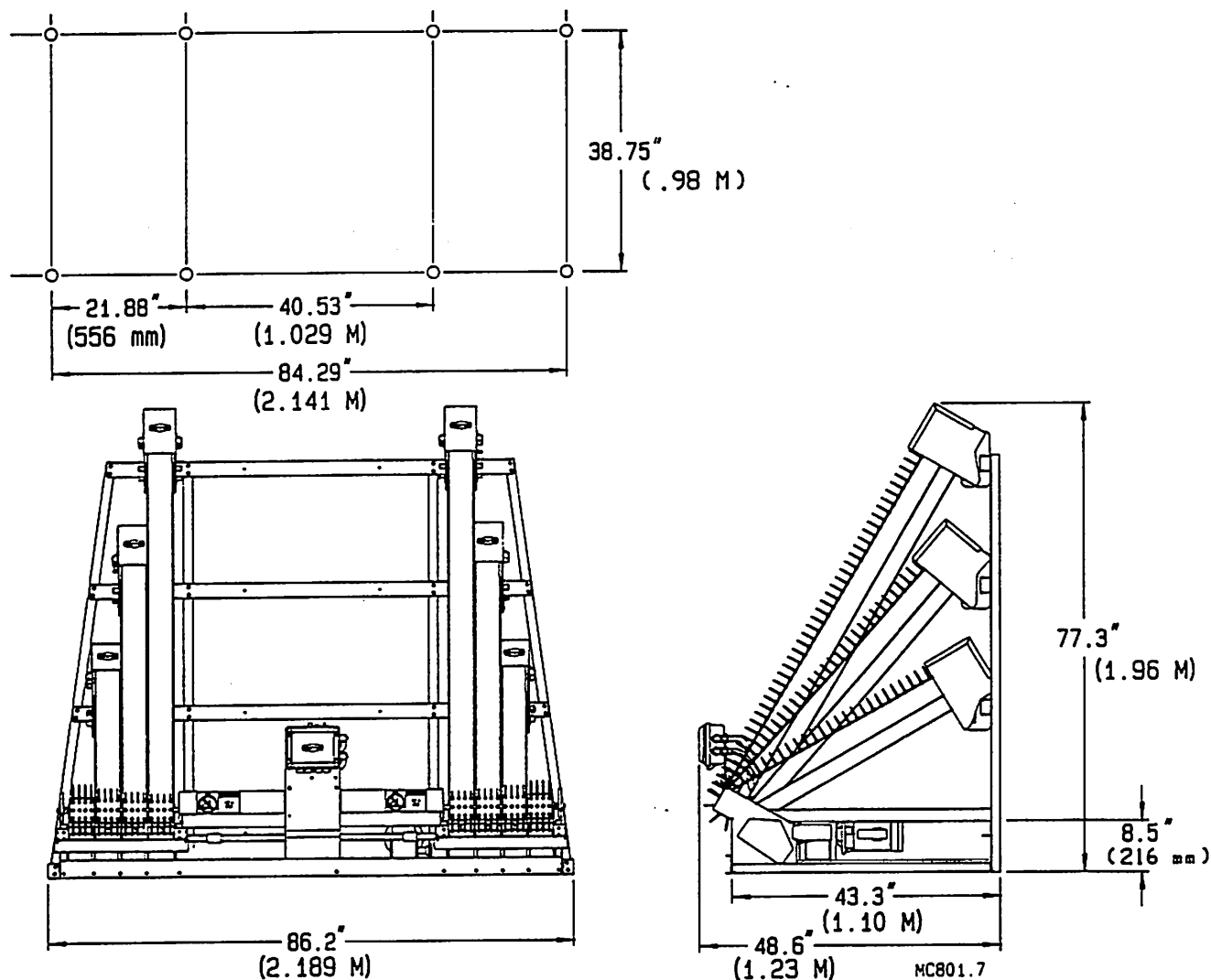


FIGURE 1. Collector Dimensions

POSITION THE COLLECTORS

1. Install the Egg Collectors on the two outer cage rows in the house (rows nearest the outside walls) first.

Position both Collectors on the supports. Refer to Figure 1 to determine the exact position of the Collectors.

Use a carpenter's level and shims (provided in the Assembly Kit) to level the machines front-to-back and side-to-side. See Figure 2.

Drill holes for lag screws and anchor the collectors securely in their final position.

2. Next, snap a chalk line between the two installed collectors.
3. Roughly, position the other Egg Collectors on the supports. IT IS IMPORTANT TO ALIGN THE FRONT OF THE COLLECTORS. Otherwise, installation of the Cross Conveyor Tray and Cross Conveyor Egg Belt will be difficult.

Temporarily install the bottom line Egg Trays and Tray Extensions on both sides of the Collectors. The Egg Trays are shipped in the Egg Collector Assembly Kit.

Use a carpenter's level and shims (provided in the Assembly Kit) to level the machines front-to-back and side-to-side. See Figure 2.

Drill holes for lag screws and anchor the Collectors securely after they are leveled and in final position.

! IMPORTANT !

The Egg Collectors must be properly positioned and installed for proper operation of the Collectors and easy installation of the Cross Conveyor. Follow instructions carefully!

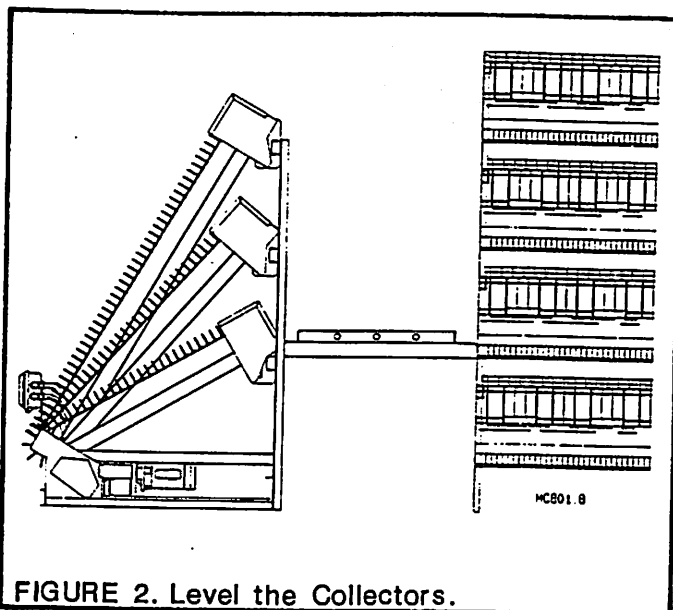


FIGURE 2. Level the Collectors.

INSTALL EGG TRAYS

Install the Egg Trays and Extensions connecting the cage row to the Collector. Tabs on the Egg Trays hook under Cage Egg Tray. See Figure 3. NOTE: Bend the tip of the Egg Tray slightly to "nose" it under the Egg Tray Wire. Bend the tabs to hold Egg Tray to the Cage Wire.

Install Egg Tray Support Wires as shown in Figure 4. The Wires may bent slightly to level the Egg Trays.

Use 10-24 machine screws and hex nuts to attach the trays to the collector entrance. The Belt Riser attaches inside the Egg Tray on the aisle side of the Egg Tray with two 10-24 machine screws. See Figure 5.

Fasten the Egg Sweep to the Egg Tray as shown in Figure 5. The sweeps help single file the eggs as they go into the de-escalator.

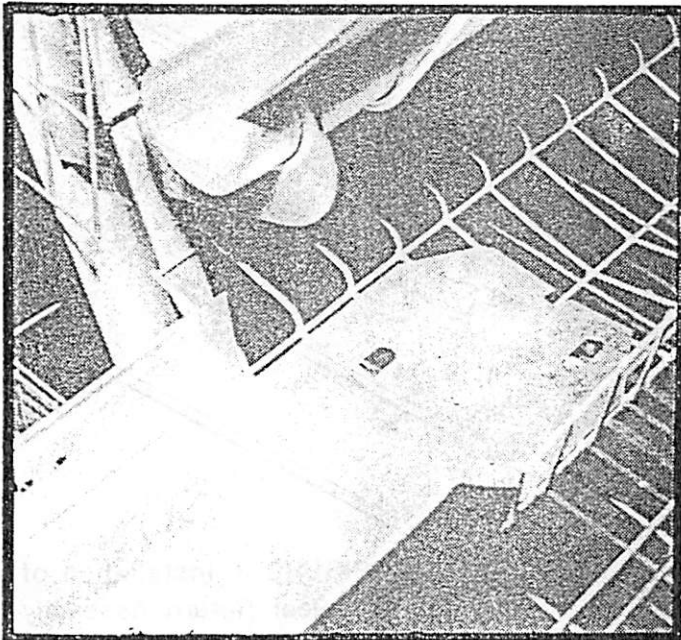


FIGURE 3. Egg Tray fastened to Egg Tray Wire.

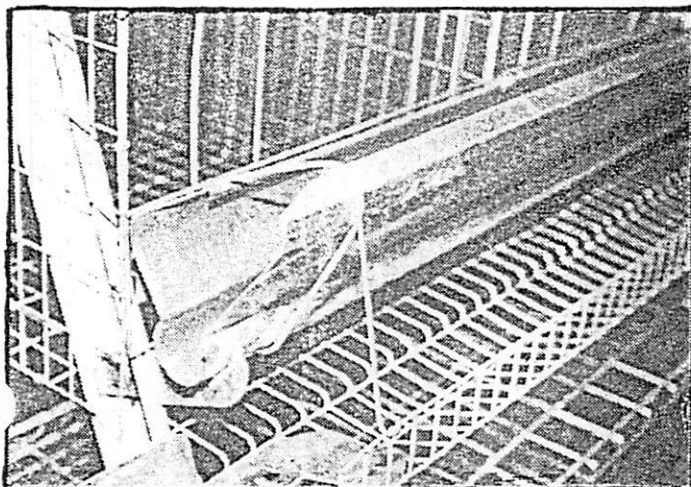


FIGURE 4. Egg Tray Support installed.

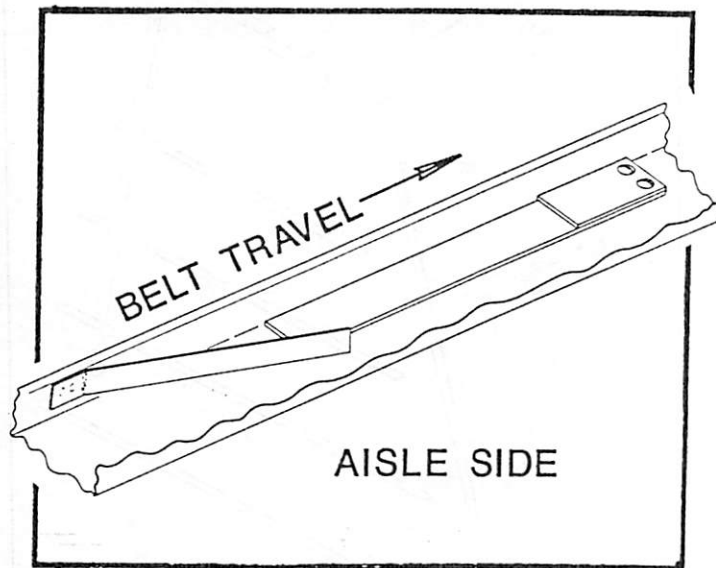


FIGURE 5. Egg Sweep installed in Egg Tray.

COLLECTOR END FRAMING INSTALLATION

Install the Collector End Framing on the cage supports as shown in Figure 6. Holes are provided. Place washers over the slots in the End Framing during framing assembly. Use two nuts and bolts to fasten the Braces together.

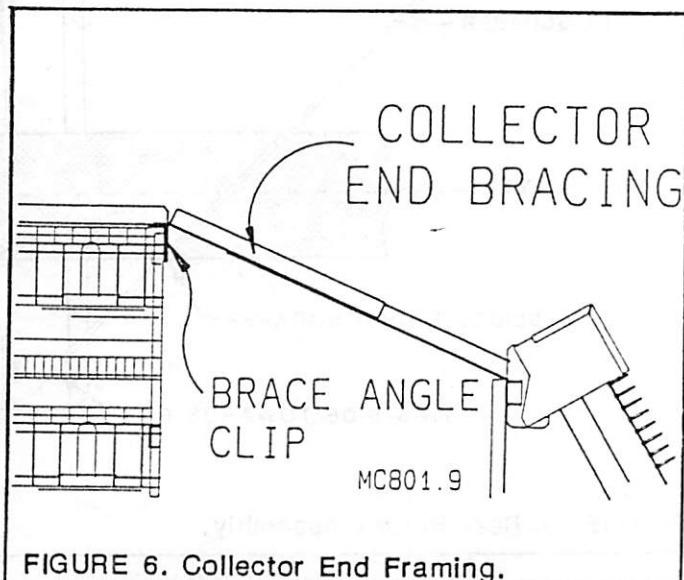


FIGURE 6. Collector End Framing.

REAR RETURN FRAMING INSTALLATION

Assemble the Rear Return Framing as shown in Figure 7. Attach the framing to the cage floor supports.

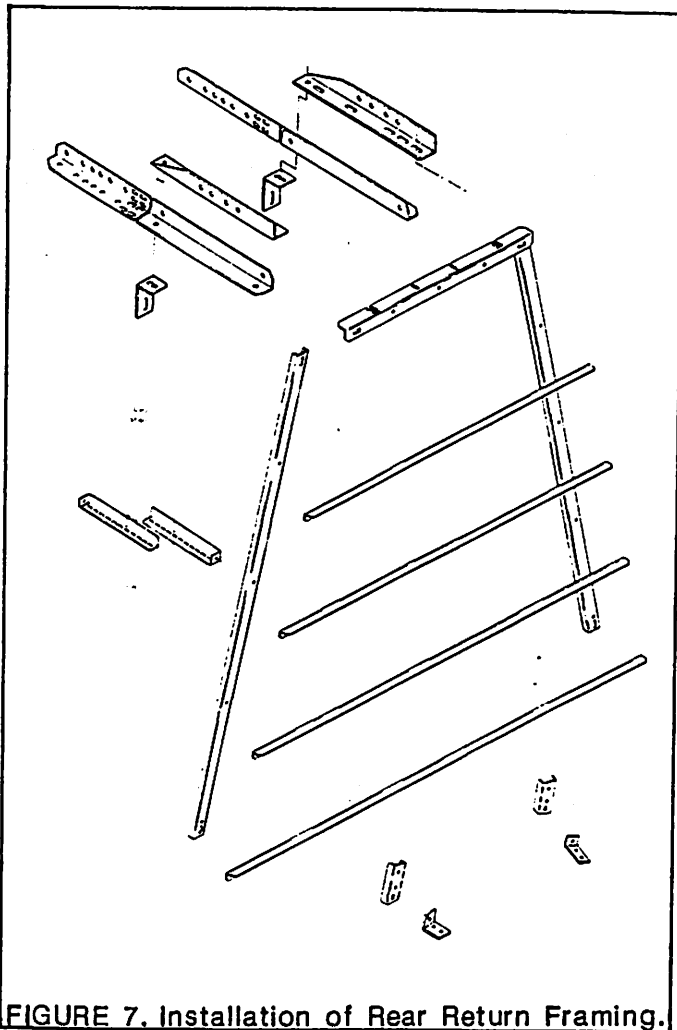


FIGURE 7. Installation of Rear Return Framing.

REAR RETURN ASSEMBLY INSTALLATION

The Rear Returns are installed on the Rear Return Framing as shown in Figure 8. The Rear Return Assembly should be installed so that the belt pulls up against the Belt Scraper as it comes out from beneath the Egg Tray. See Figure 9. Be sure to install the Rear Returns on the correct side of the cage row. The Belt Scrapers are angled so that the scrapings are pushed toward the pit area. See Figure 9.

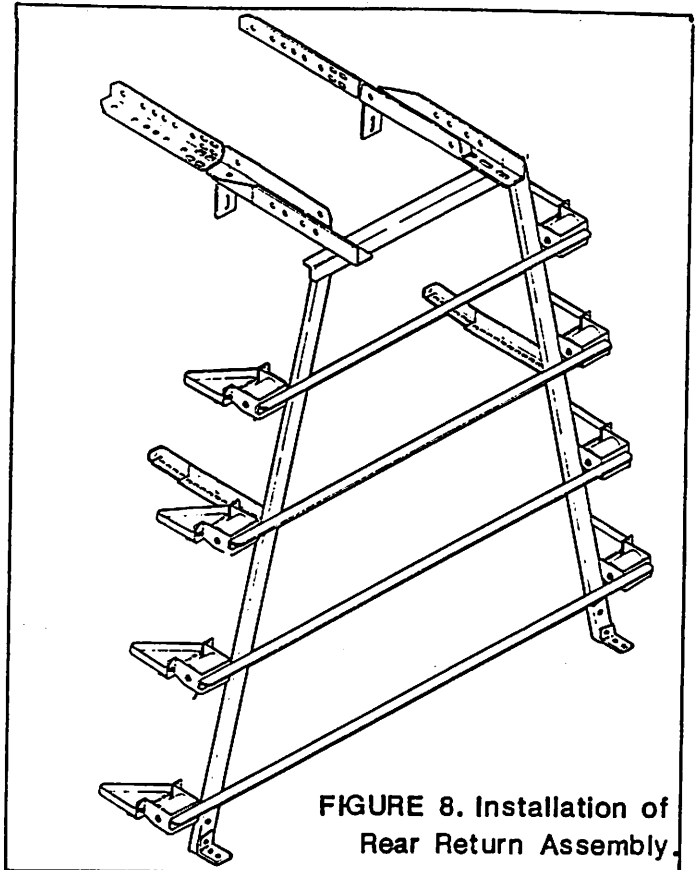


FIGURE 8. Installation of
Rear Return Assembly.

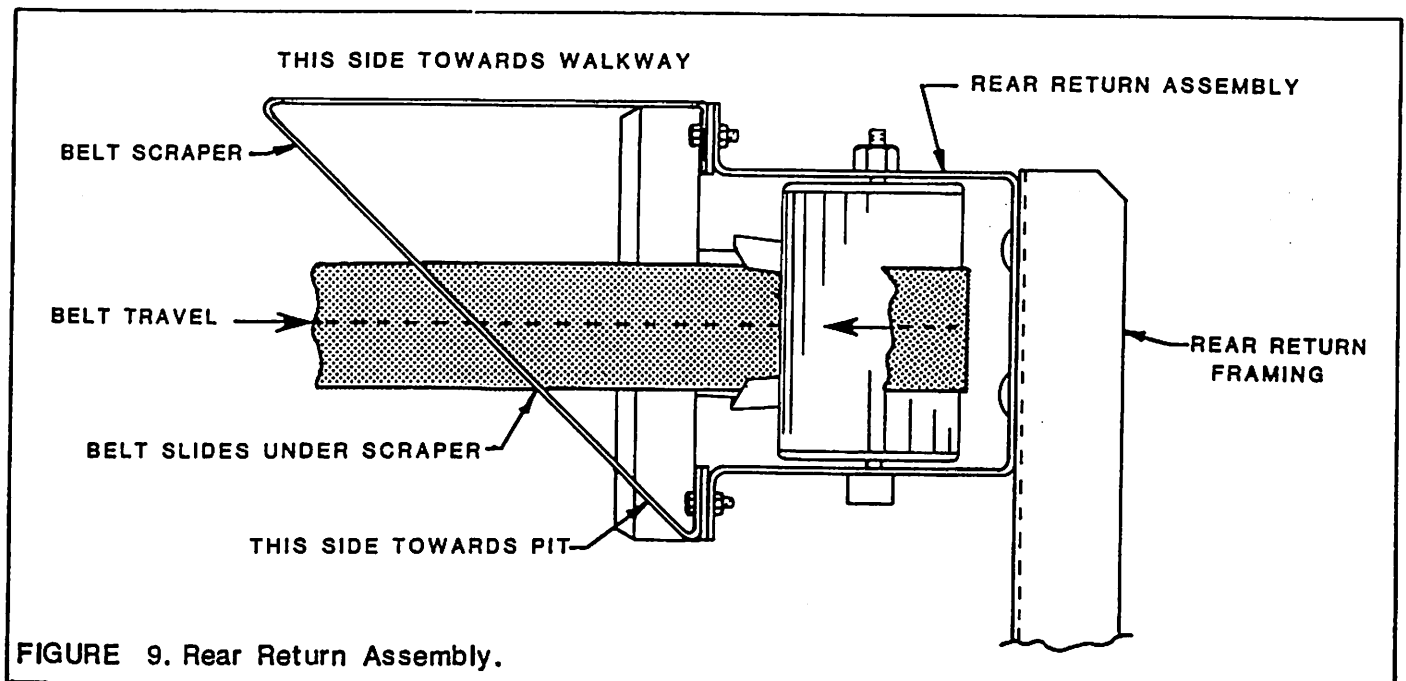


FIGURE 9. Rear Return Assembly.

INSTALLATION OF 4" (100 MM)

EGG BELT

1. Unroll the 4" (100 mm) Egg Belt in the Egg Tray. Thread the belt around the Rear Return Roller and pull the belt back to the Collector beneath the Egg Tray.
2. Thread the Egg Belt through the Egg Collector as shown in Figure 10.
3. Install Belt Return Clips on all cage rows after belt is installed. Install a Belt Return Clip ONE CAGE PARTITION FROM EACH END OF THE CAGE ROW; then, beginning at the Collector end of the line, install a clip at the first partition PAST each cage floor support. Install Belt Return Clips on ALL CAGE ROWS. Belt Return Clip should be installed so that the belt travel holds it in position. See Figure 11 for proper installation.

IMPORTANT

Do not install Belt Return Clips on a partition with a watering cup. Skip to the next partition and install Belt Return Clip there.

4. Stretch the belt by hand. THE BELT SHOULD BE STRETCHED $\frac{1}{2}\%$ OF THE BELT LENGTH, OR 6" (152 mm) OF STRETCH PER 100 FEET (31 m) OF BELT.
5. Cut and sew the belt.
 - A. Trim the belt to a rounded point. See Figure 12.
 - B. Overlap the ends of the belt 4" (102 mm) as shown in Figure 12. There must be 4" (102 mm) of FULL WIDTH BELT OVERLAP!
 - C. Sew the belt. Be sure the two ends are in line so that the belt will not be crooked. BE SURE THE ENDS OF THE BELT ARE COMPLETELY STICED DOWN!

Sew the overlapped sides of the belt together as shown in Figure 12.

Use a #16 or #18 needle with dual polyester #50 thread to sew the Egg Belt as shown.

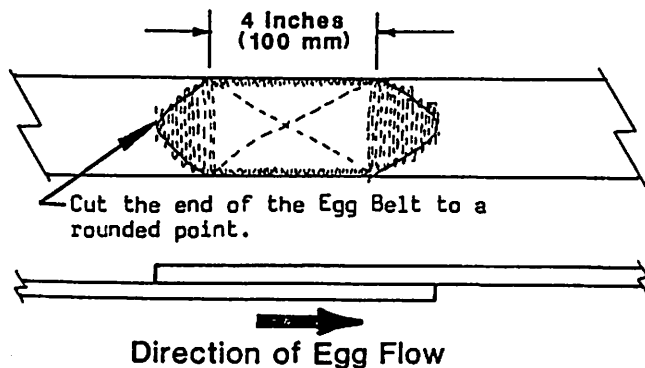
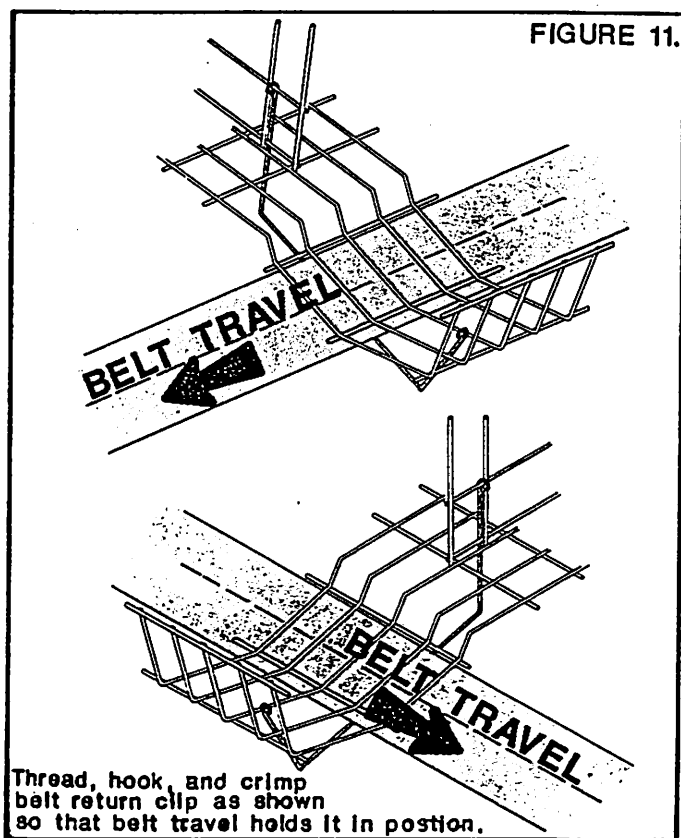
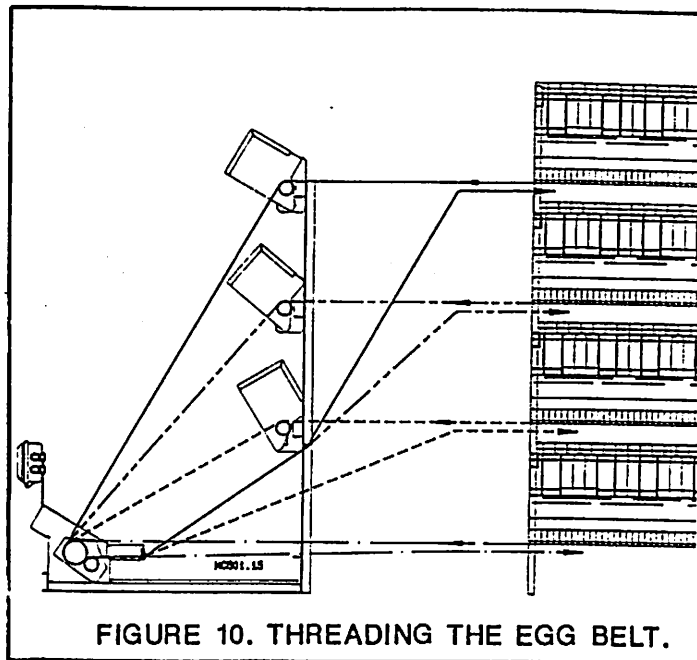


FIGURE 12. SPLICING THE EGG BELT.



EGG TRAY BRACE INSTALLATION

Install an Egg Tray Brace at the rear return end of the cage Egg Tray. Use 2 extra ferrules to attach the brace as shown in Figure 13.

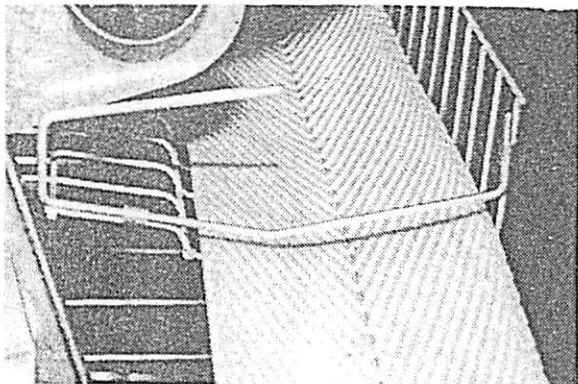


FIGURE 13. Egg Tray Brace installation.

EGG SWEEP BRACES and EGG SWEEP CROSS BRACE INSTALLATION

Install four Egg Sweep Braces and two Cross Braces on each Collector; two per set of de-escalators as shown in Figures 14 and 15. Use hardware as shown.

The Egg Sweep Braces have several sets of holes so that they can be adjusted in or out from the collector as required. Initially, install the Egg Sweep Braces a minimum of 4" (102 mm) from the Collector.

EGG SWEEP INSTALLATION

Install plastic Egg Sweeps as shown in Figure 16. Only attach the Cross Brace at the two locations shown. The bottom of the plastic Egg Sweeps should be 5/8" (16 mm) above the Cross Conveyor.

ROD TRANSFER KIT INSTALLATION

The Rod Transfer Kit is used with the Finger Collector when a rod-type Cross Conveyor is used.

See the instructions packed with the Rod Transfer Kit for proper installation.

CONTROLS INSTALLATION

Cross Conveyor system and flow control installation is covered in Chore-Time Manual ME626 Cross Conveyor Equipment Operators Manual. The manual also contains information for installation and field wiring of Egg Collector Controls. Use wire of adequate size. All electrical wiring should be done by a qualified electrician in accordance with Local and National Electrical Codes. Ground all electrical equipment.

On Egg Collectors with three phase motors, the motor voltage and motor rotation must be set by the electrician at the job site.

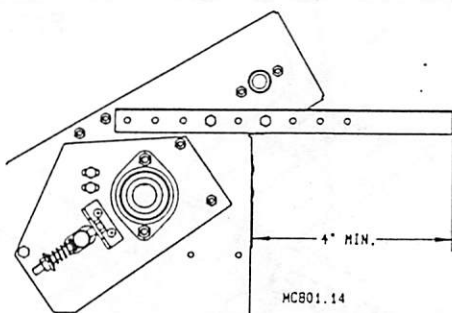


FIGURE 14. Egg Sweep Braces installed at each collector.

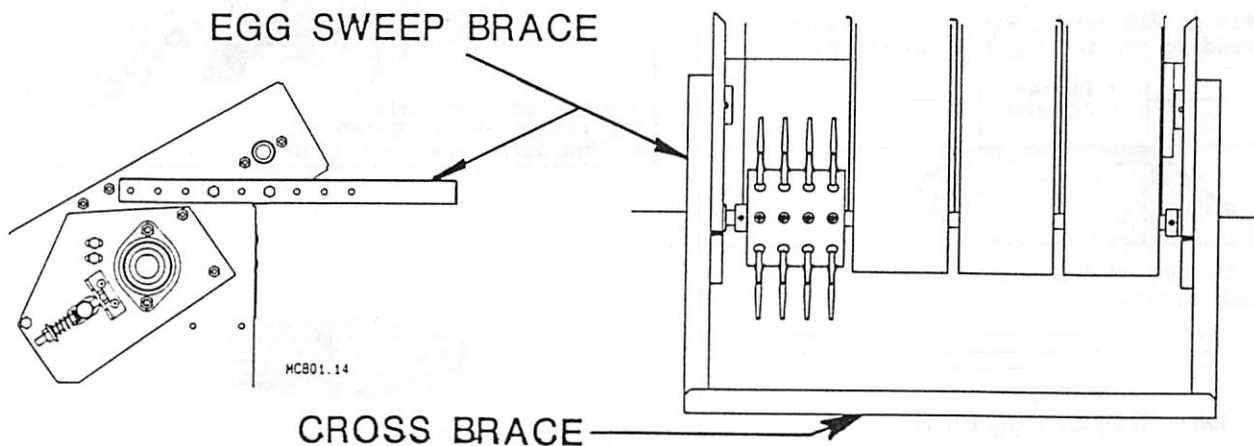


FIGURE 15. Cross Braces installed at each collector.

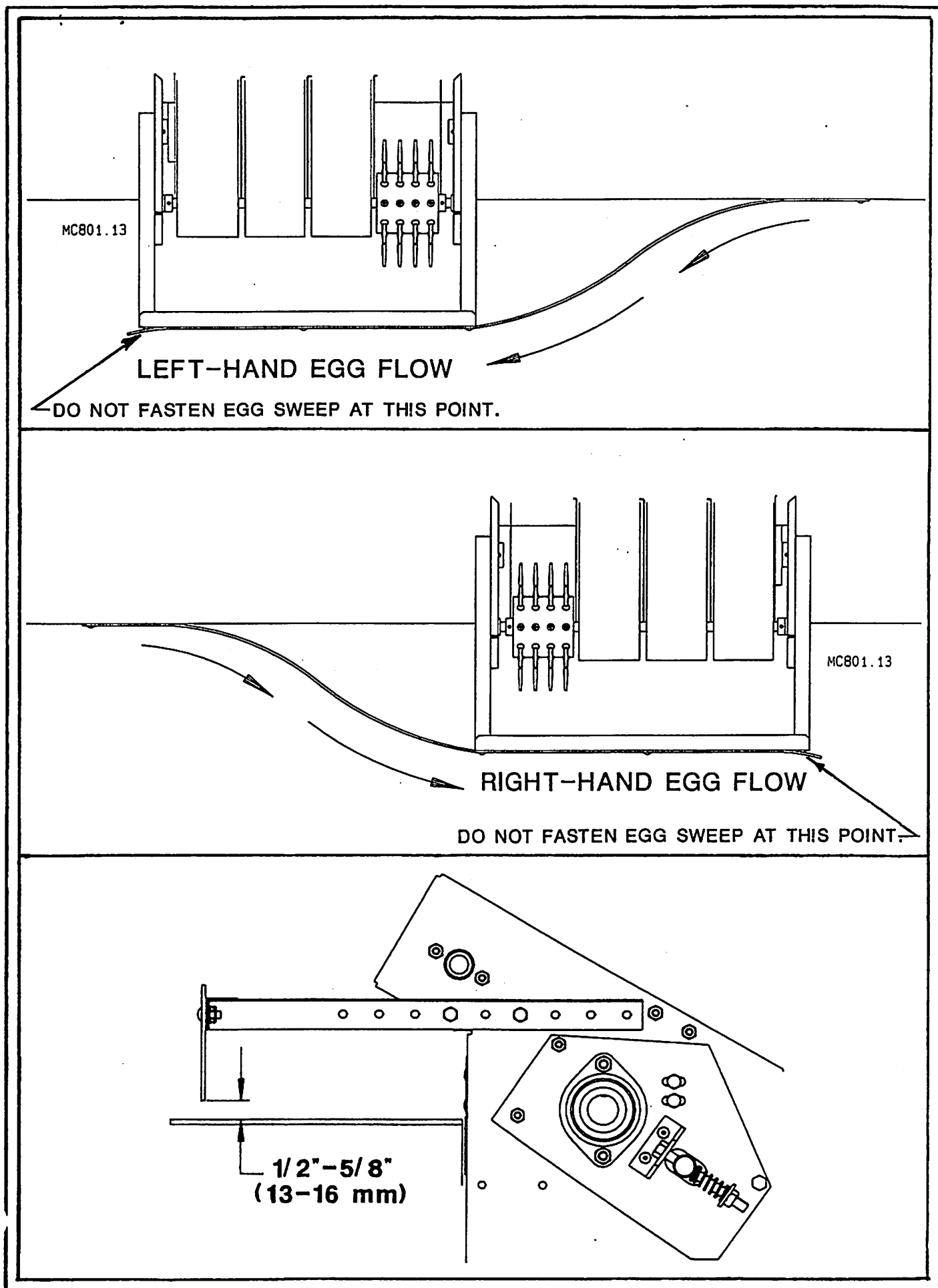


FIGURE 16. Egg Sweep Installation

WIRING DIAGRAM FOR 3-PHASE FINGER COLLECTOR

CROSS CONVEYOR CONTROL PANEL

230 VAC SERVICE

G L2 L1

DPDT
TOGGLE
SWITCH

6 AMP
SLO-BLOW FUSE

25 AMP CONTACTOR

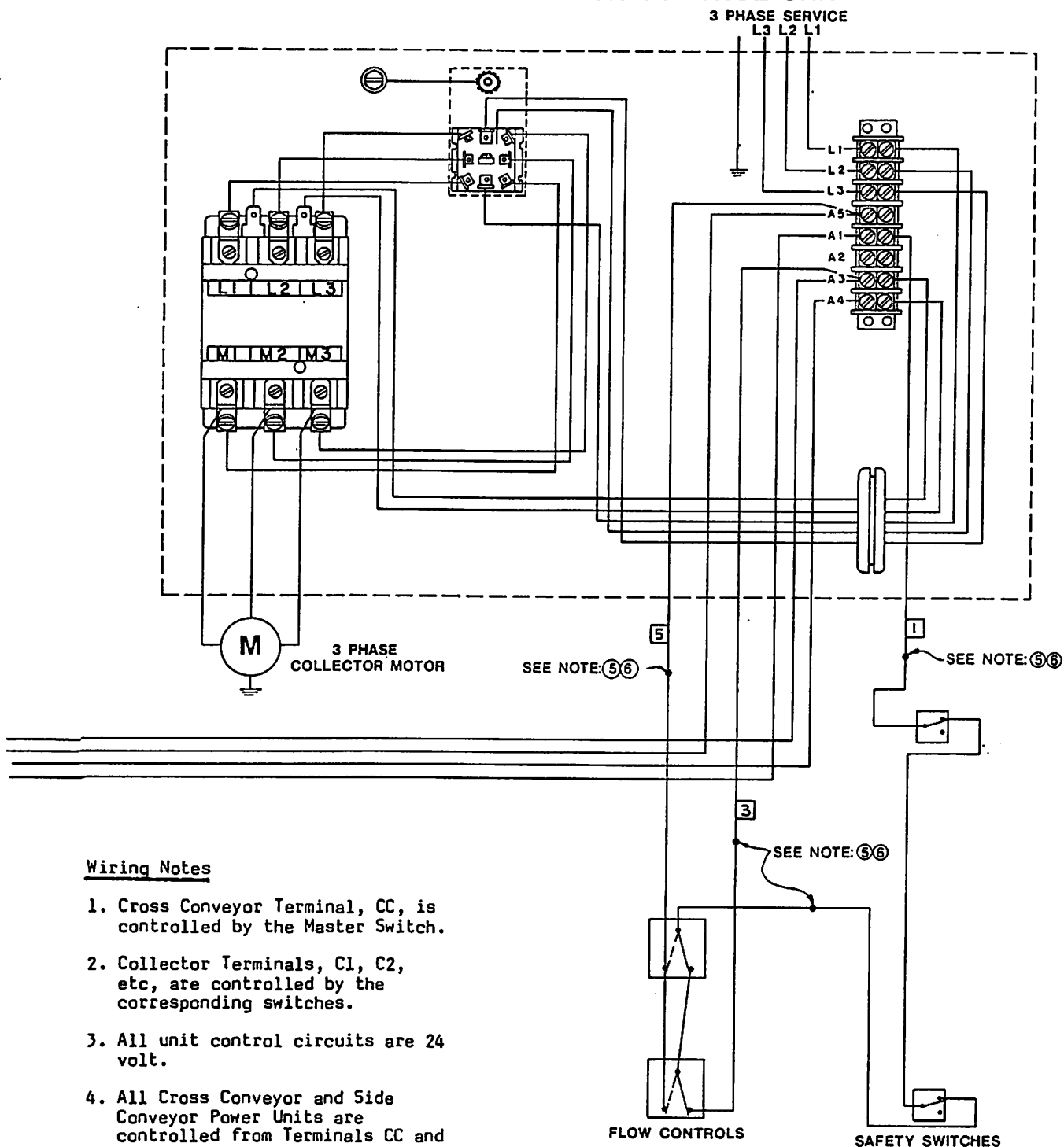
CROSS CONVEYOR MOTOR
3/4 H.P. 230 V.

L1
L2
G
230 VAC
SERVICE

ONLY PARTIAL WIRING SHOWN

STATION CONTROL PANEL

3 PHASE COLLECTOR CONTROL UNIT



Wiring Notes

1. Cross Conveyor Terminal, CC, is controlled by the Master Switch.
2. Collector Terminals, C1, C2, etc, are controlled by the corresponding switches.
3. All unit control circuits are 24 volt.
4. All Cross Conveyor and Side Conveyor Power Units are controlled from Terminals CC and A1.
5. Connect in white box under Collector Power Unit.
6. Machine is factory wired for use w/o Flow Controls. Where Flow Controls are to be used, remove wire nut from wire 3 and slack belt wire. Next, connect wire from slack belt to common of Flow Controls. Wire 3 will go to normally closed of the Flow Controls. Wire 5 will go to normally open of the Flow Controls.

WIRING DIAGRAM FOR SINGLE PHASE FINGER COLLECTOR

CROSS CONVEYOR CONTROL PANEL

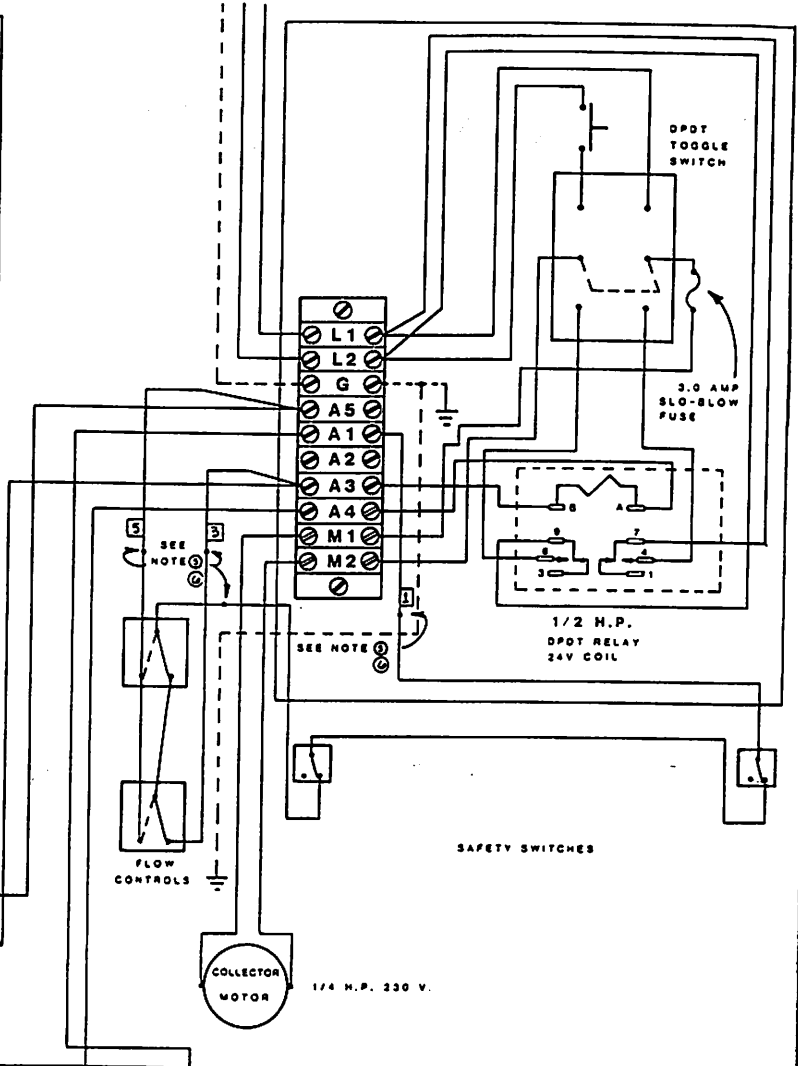
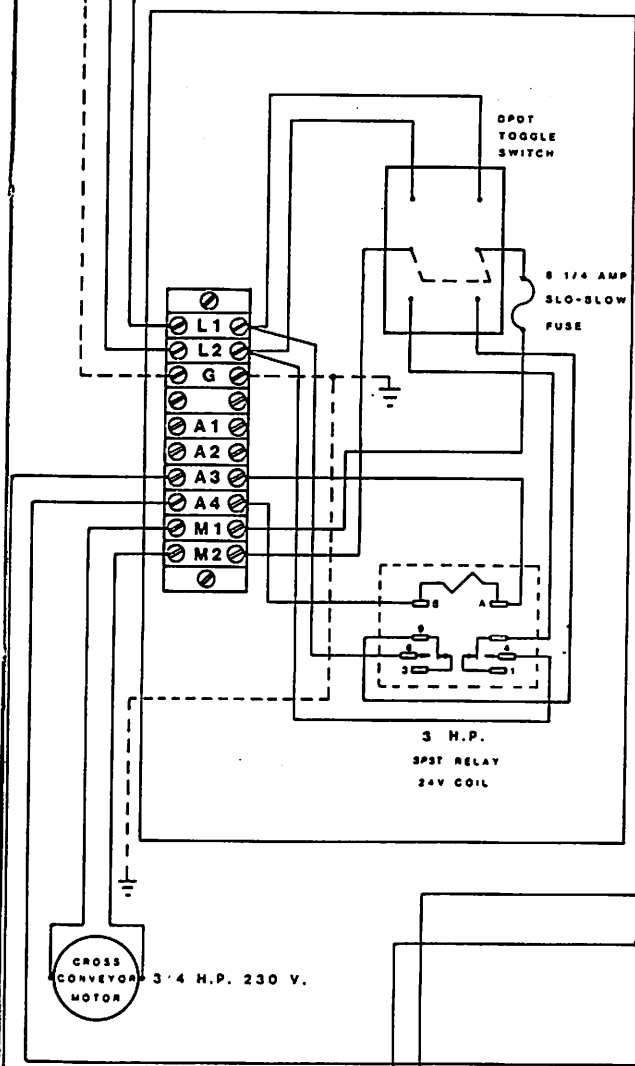
EGG COLLECTOR CONTROL PANEL

230 VAC SERVICE

GL2L1

230 VAC SERVICE

GL2L1

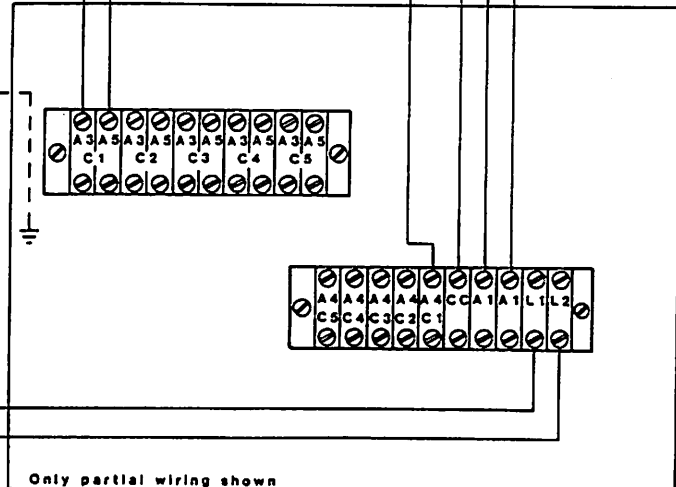


L1

L2

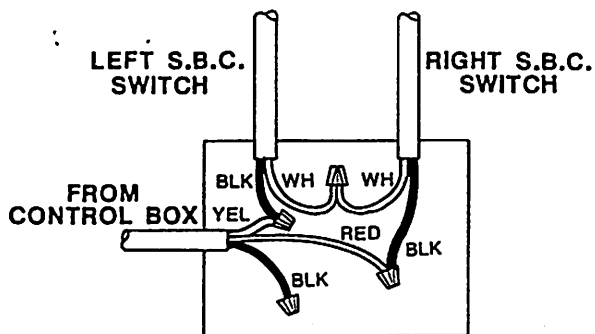
G

230 VAC SERVICE

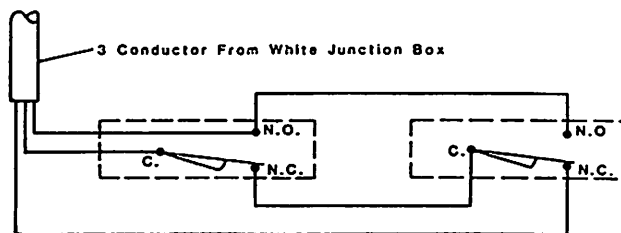


Only partial wiring shown

MASTER CONTROL PANEL



Detail "A": White Junction Box

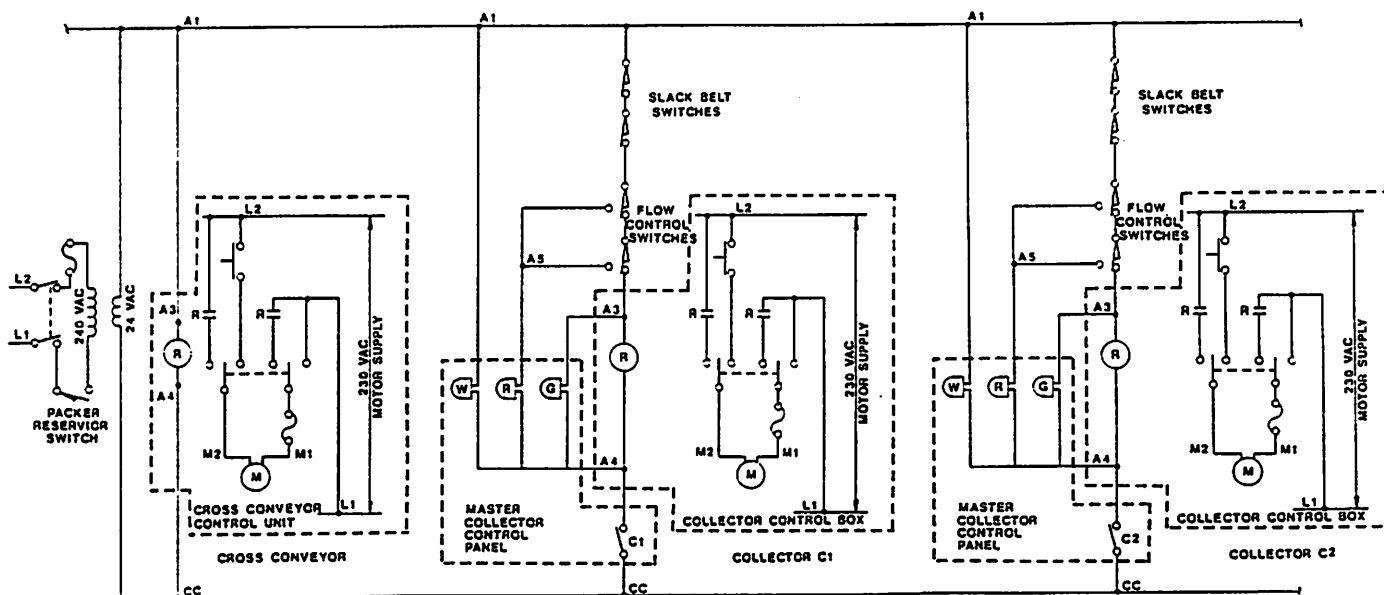
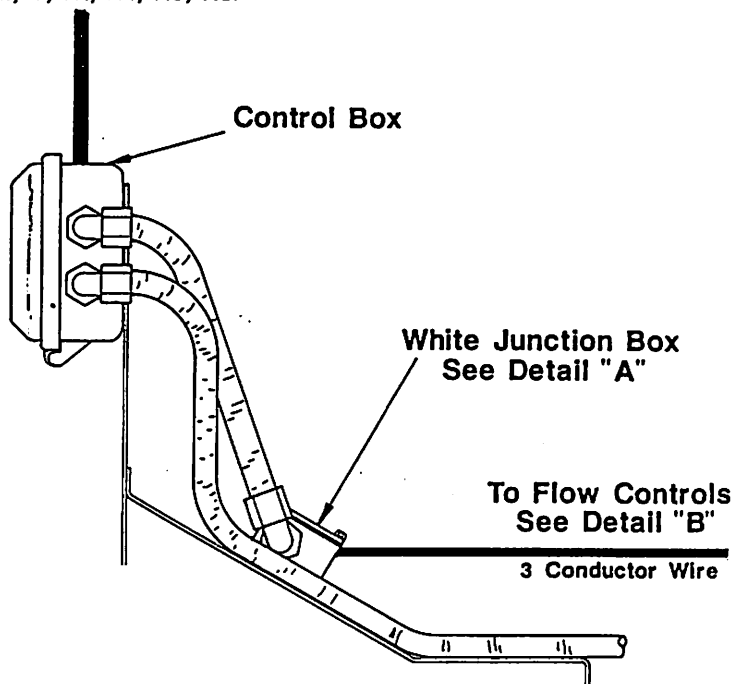


Detail "B": Flow Control

WIRING NOTES

1. Cross Conveyor Terminal, CC, is controlled by the Master Switch.
2. Collector Terminals, C1, C2, etc, are controlled by the corresponding switches.
3. All unit Control Circuits are 24 Volt.
4. All Cross Conveyor and Side Conveyor Power Units are controlled from Terminals CC and A1.
5. Connect in white box under Collector Power Unit.
6. Machine is factory wired for use w/o Flow Controls. Where Flow Controls are to be used, remove wire nut from wire 3 and slack belt wire. Next, connect wire from slack belt to common of Flow Controls. Wire 3 will go to normally closed of the Flow Controls. Wire 5 will go to normally open of the Flow Controls.

7 Conductor Wire
(L1, L2, G, A1, A4, A3, A5)





PARTS LIST

TABLE OF CONTENTS

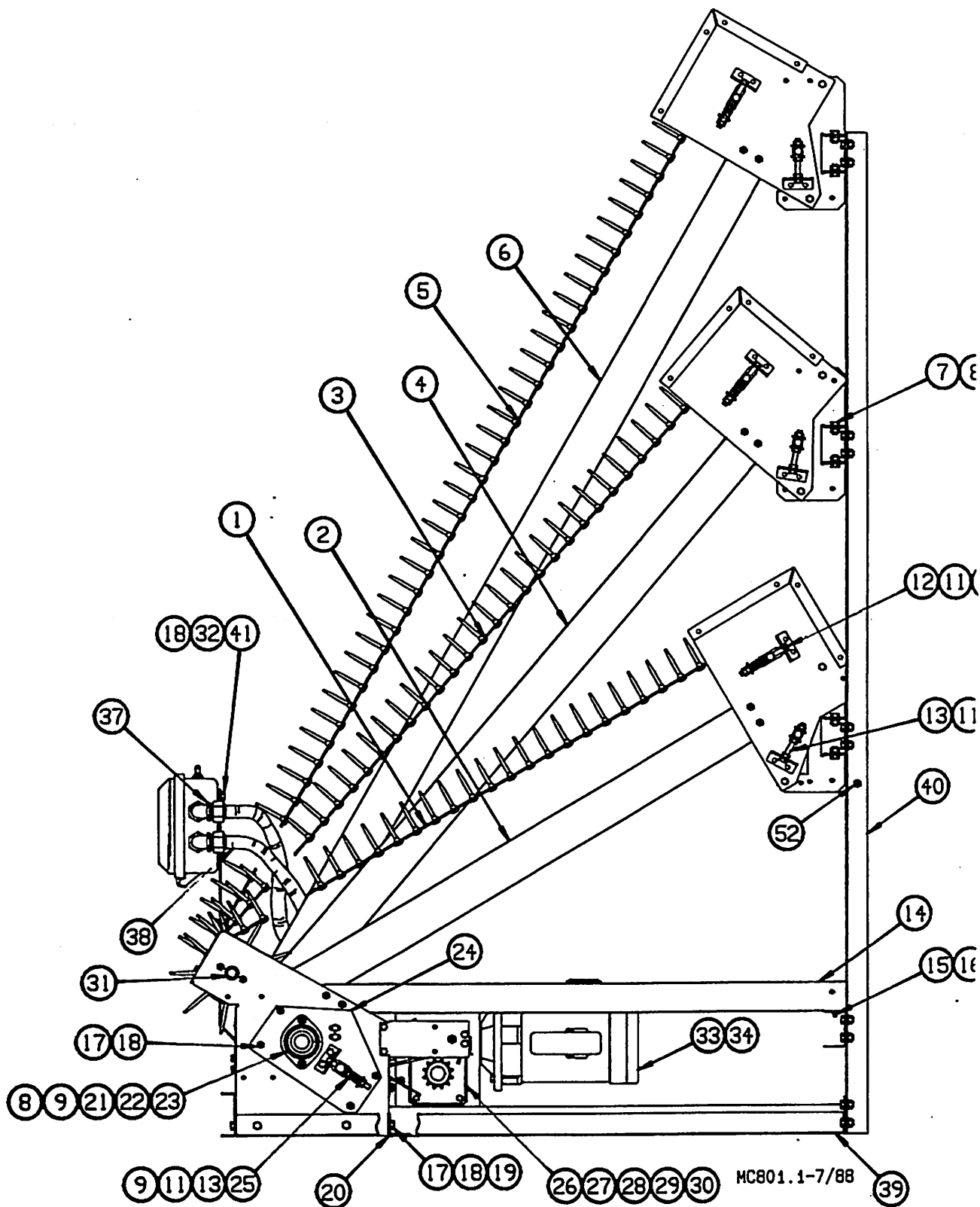
<u>Topic</u>	<u>Page</u>
Finger Collector Assembly	15-21
Finger Collector Assembly Kit	22
Miscellaneous Parts	22
Single Phase Collector Control Unit	23
3-Phase Collector Control Unit	23
Collector End Framing	24
Rod Transfer Kit	24
Rear Return Assembly	24
Rear Return Framing Kit	25

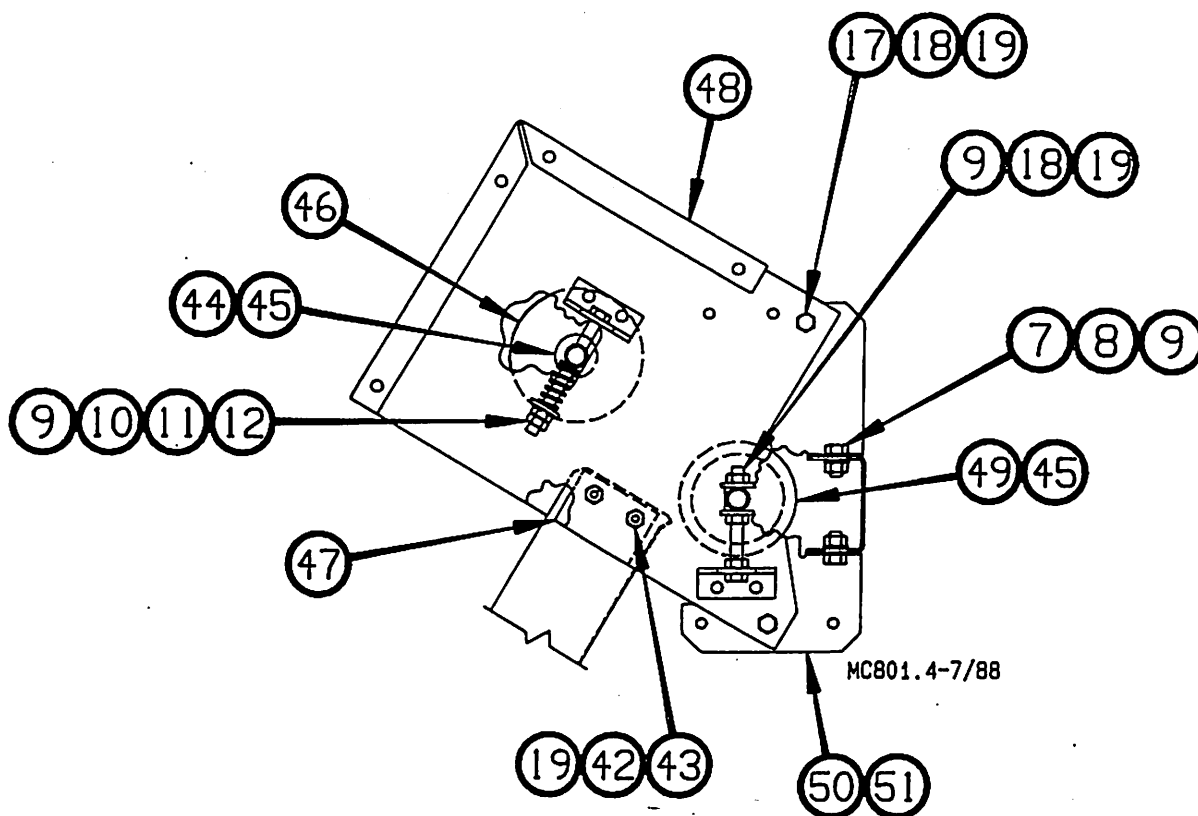
ALL PARTS SHOULD BE ORDERED BY PART NUMBER AND DESCRIPTION AS GIVEN IN THE REPAIR PARTS LISTS IN THIS MANUAL.

ALL PARTS ARE BILLED WHEN SHIPPED. IF A RETURNED PART IS DEFECTIVE AND WITHIN WARRANTY, CREDIT WILL BE ALLOWED AGAINST BILLING.

CHECK SHIPMENT FOR DAMAGES AND SHORTAGES. ALL CLAIMS FOR DAMAGES OR SHORTAGES RESULTING FROM SHIPMENT MUST BE FILED WITH THE CARRIER.

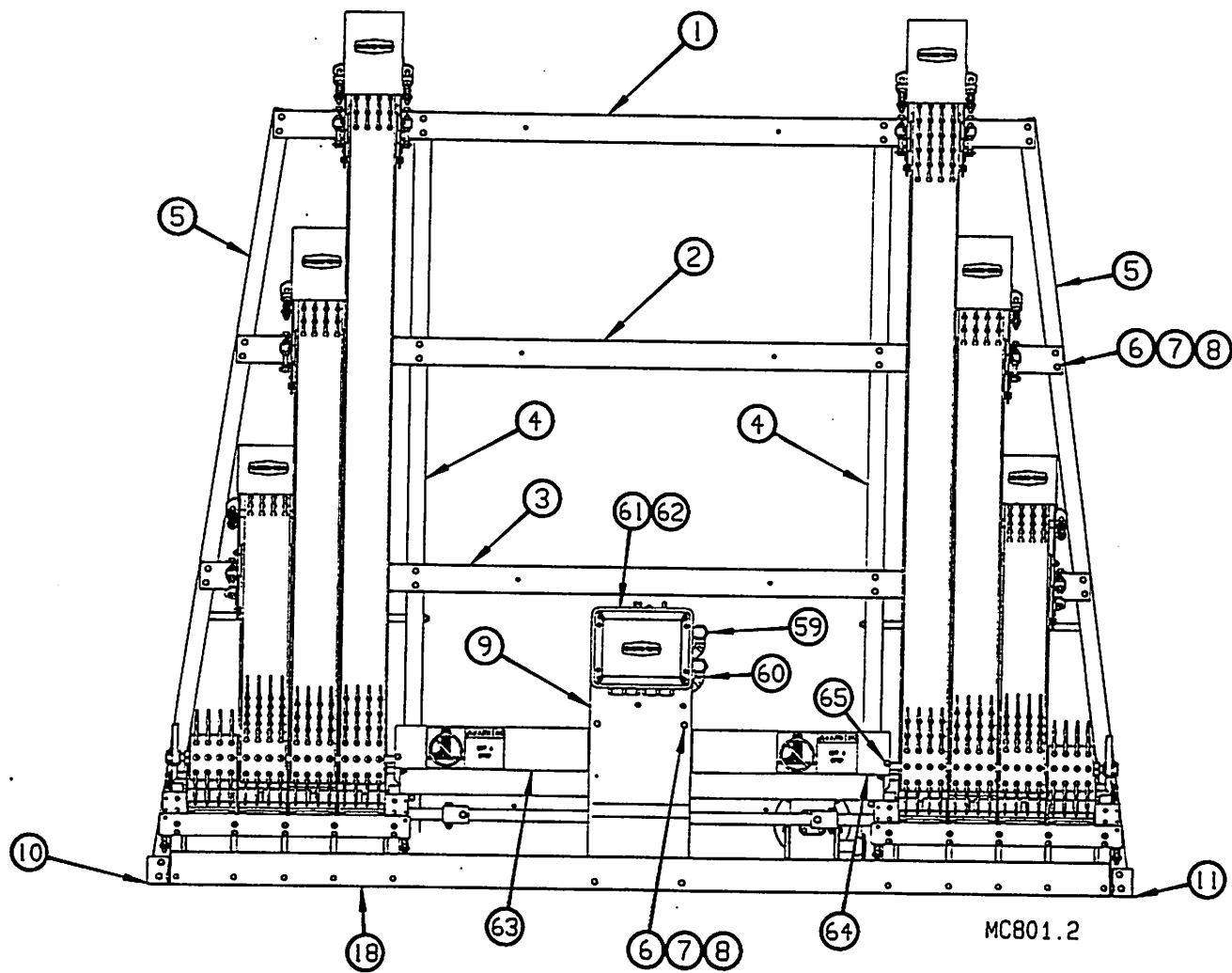


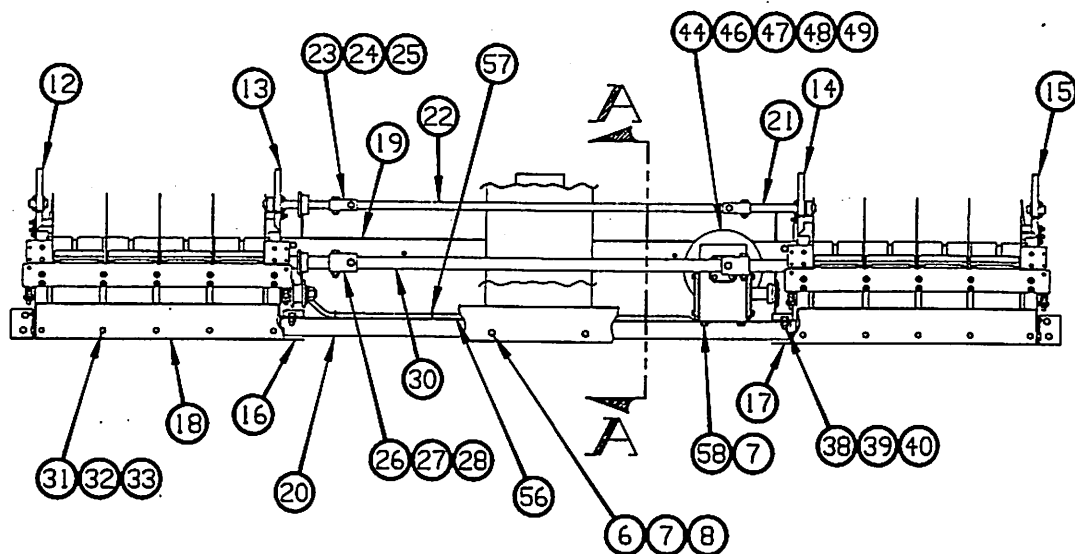




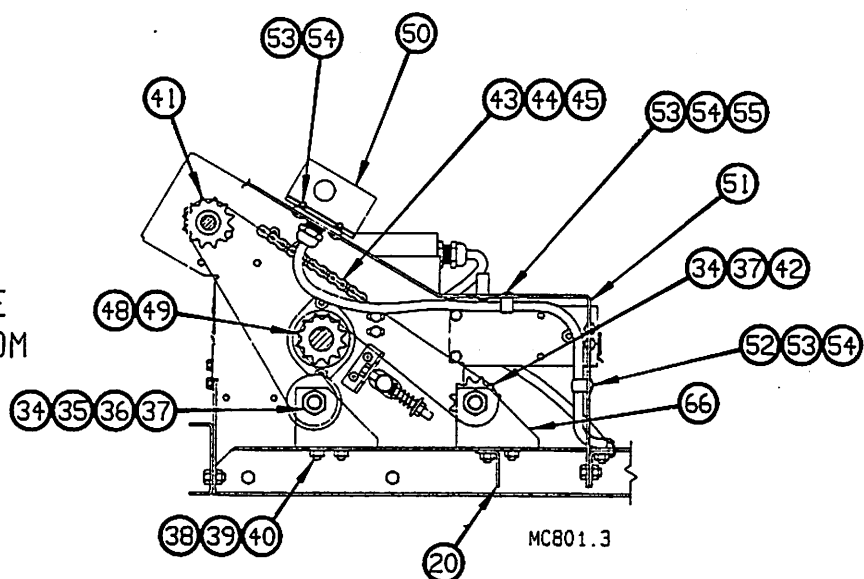
Key	Description	Part No.	Key	Description	Part No.
1	Finger Belt Assembly	24025-1	30	Connecting Link	20017
2	Egg Chute	24857	31	Finger Drive Shaft	24348
3	Finger Belt Assembly	24025-2	32	"Oil Here" Decal	20250-1
4	Egg Chute	24856	33	$\frac{1}{2}$ H.P. Motor (Single Phase)	20466
5	Finger Belt Assembly	24025-3	34	$\frac{1}{2}$ H.P. Motor (Three Phase)	14110
6	Egg Chute	24855	35	Control Unit (Single Phase)	23722
7	$5/16-18 \times \frac{1}{2}$ Hex Hd Bolt	4412-1	36	Control Unit (Three Phase)	14650
8	$5/16$ Lockwasher	547	37	Control Cord Assembly	
9	$5/16-18$ Hex Nut	2145		(Single Phase, to Junction Box)	24730
10	$5/16-18 \times 3\frac{1}{2}$ Hex Hd Bolt	4412-6	--	Control Cord Assembly	
11	$5/16$ Flat Washer	546		(Three Phase, to Junction Box)	24938
12	Compression Spring	20368	38	Control Cord Assembly	
13	$5/16-18 \times 2-3/4$ Hex Hd Bolt	4412-3		(Single Phase, to Motor)	24729
14	Entrance Tray	14665	--	Control Cord Assembly	
15	$10-24 \times \frac{1}{2}$ Truss Hd Screw	1795		(Three Phase, to Motor)	24937
16	$10-24$ Stamped Nut	135	39	Main Angle (R.H.)	24368-2
17	$\frac{1}{2}-20 \times \frac{1}{2}$ Hex Hd Bolt	1487	40	Main Angle (Outside)	24867
18	$\frac{1}{2}$ Lockwasher	1667	41	Control Mounting Plate	24897
19	$\frac{1}{2}-20$ Hex Nut	751	42	Foam Tape	20839
20	Angle Bracket	14619	43	$\frac{1}{2}-20 \times 5/8$ Truss Hd Bolt	4305
21	1" Flangette	20191-1	44	$5/8$ Set Collar	1386
22	1" Bearing	20191-2	45	Finger Idler Shaft	14488
23	$5/16-18 \times 3/4$ Carriage Bolt	20125	46	Adjusting Roller	21015
24	Access Plate Assembly	24919	47	Chute Spacer	14479
25	Compression Spring	20724	48	Entrance Assembly	24785
26	Speed Reducer	20235	49	Idler Roller	24271
27	Drive Chain	21045-14	50	Entrance Brace	24904
28	12 Tooth Sprocket	20086	51	Entrance Brace	2486
29	$\frac{1}{2}$ " Square Key	2419-3	52	Rear Return Shaft	25035

4-HI FINGER COLLECTOR





VIEW A-A
 LOOKING AT LEFT SIDE
 OF THE COLLECTOR FROM
 THE INSIDE OF THE
 COLECTOR.



Key	Description	Part No.
1	Cross Brace	24874
2	Cross Brace	24873
3	Cross Brace	24872
4	Main Angle (inside)	24866
5	Main Angle (outside)	24867
6	5/16-18 x 1/2 Fastener	4412-1
7	5/16 Lockwasher	547
8	5/16-18 Hex Nut	2145
9	Control Mounting Plate	24897
10	Main Angle (L.H.)	24368-1
11	Main Angle (R.H.)	24368-2
12	Side Panel Weldment	24933-1
13	Side Panel Weldment	24934-1
14	Side Panel Weldment	24934-2
15	Side Panel Weldment	24933-2
16	Inner Main Brace (L.H.)	24369-1
17	Inner Main Brace (R.H.)	24369-2
18	Front Connecting Brace	24359
19	Cross Brace	24871
20	Motor Mount	24266
21	Finger Drive Shaft	24348
22	Connecting Shaft	24215
23	5/8" Coupling	24214
24	5/16-18 Locknut	2148
25	5/16-18x1-1/4 Hex Hd Bolt	2150
26	1" Coupling	20269
27	3/8-16x2 Hex Hd Bolt	20604
28	3/8-16 Locknut	2183
29	Shaft	20572-8
30	Connecting Shaft	21049-26
31	1/4-20x1/2 Hex Hd Bolt	1487
32	1/4 Lockwasher	1667
33	1/4-20 Hex Nut	751
34	5/8-11x3 Hex Hd Bolt	5745-2
35	Idler Bushing	21239
36	Chain Idler Roller	20369
37	5/8-11 Flange Nut	5762
38	3/8-16x3/4 Hex Hd Bolt	2182
39	3/8 Lockwasher	5747
40	3/8-16 Hex Nut	1549
41	12 Tooth Sprocket	24846
42	Idler Sprocket	20079
43	Drive Chain	21045-12
44	Connecting Link	20017
45	1/2 Pitch Offset Link	23755
46	Speed Reducer	20235
47	Drive Chain	21045-14
48	12 Tooth Sprocket	20086
49	1/4" Square Key	2419-3
50	SBC Junction Box Assembly	14042
51	Control Brace Weldment	24925
52	Cable Clip	5658
53	10-24x1/2 Truss Hd Screw	1795
54	10-24 Stamp Nut	135
55	Cord Clip	21233
56	Cord	4999-63
57	Wire Tie	6635
58	5/16-18x1 Hex Hd Bolt	4412-7
59	Control Cord Assembly (Single Phase, to Junction Box)	24730
--	Control Cord Assembly (Three Phase, to Junction Box)	24938
60	Control Cord Assembly (Single Phase, to Motor)	24729
--	Control Cord Assembly (Three Phase, to Motor)	24937
61	Control Unit (Single Phase)	23722
62	Control Unit (Three Phase)	14650
63	Drive Cover	24898
64	Drive Cover	24899
65	10-24x5/8 Hex Hd Screw	1876
66	Idler Bracket	24849

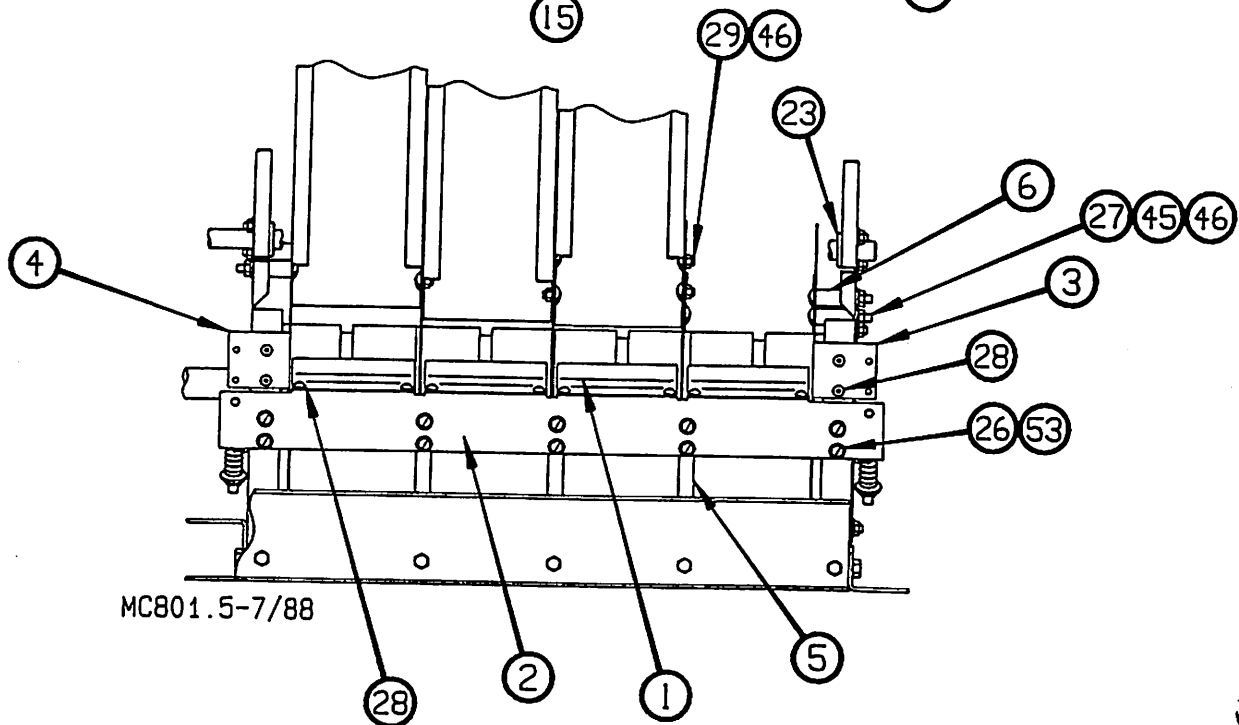
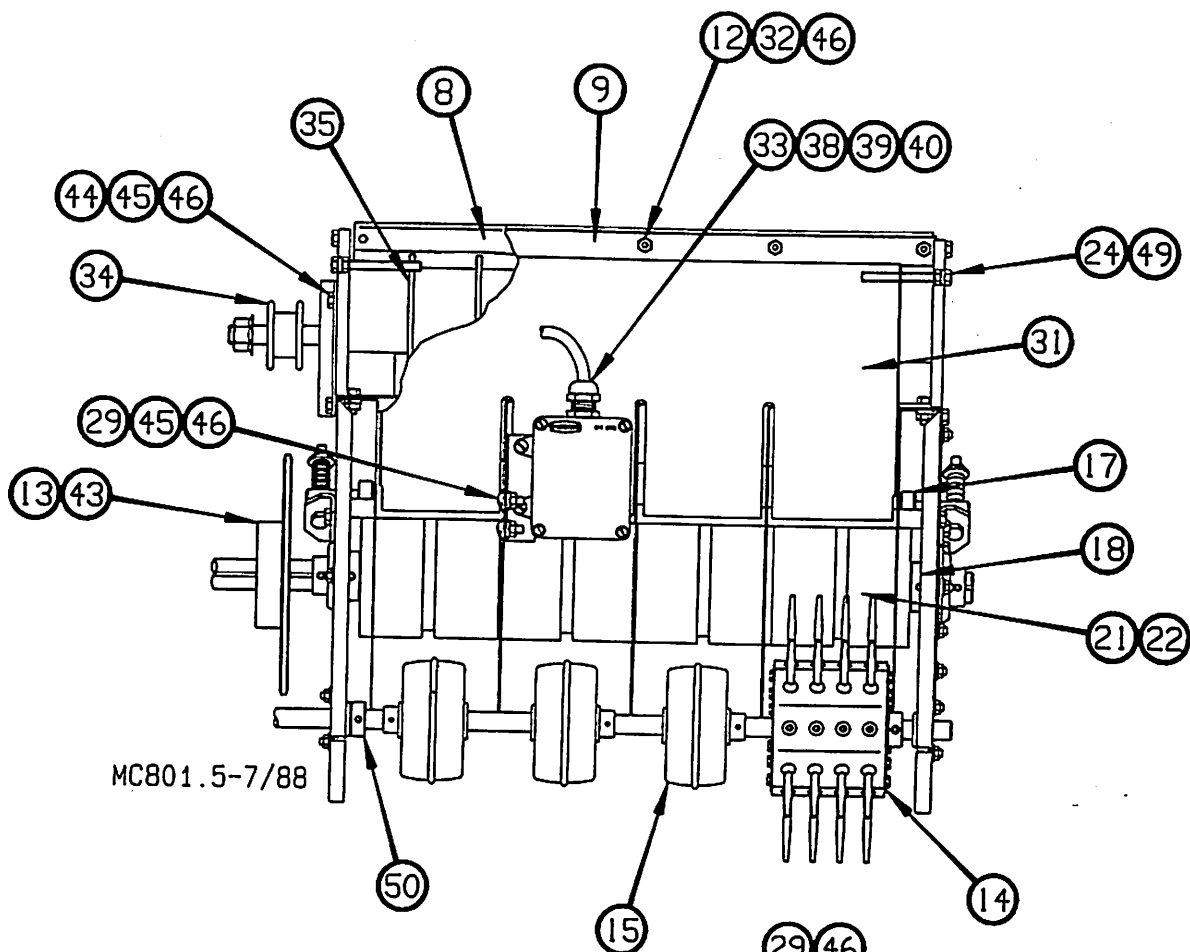
Refer to the following to order Finger Collectors.

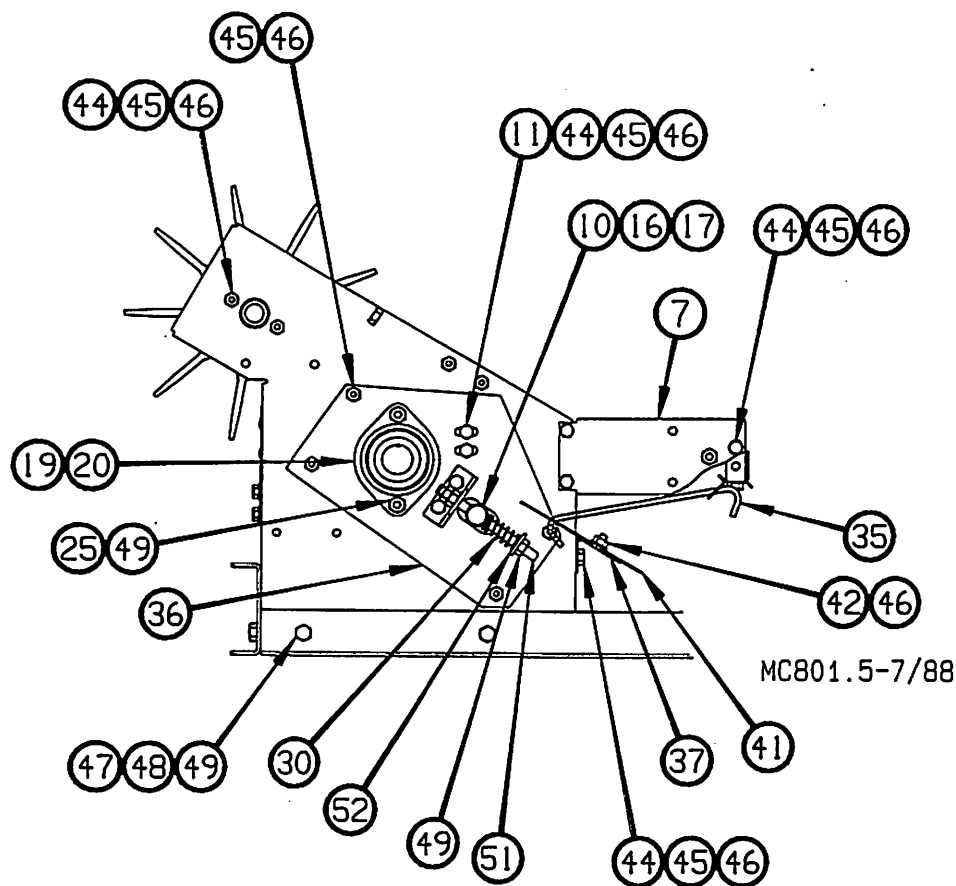
Finger Collector, single phase w/motor.
24750-1

Finger Collector, single phase less motor.
24750-1LM

Finger Collector, three phase w/motor.
24750-3

Finger Collector, three phase less motor.
24750-3LM

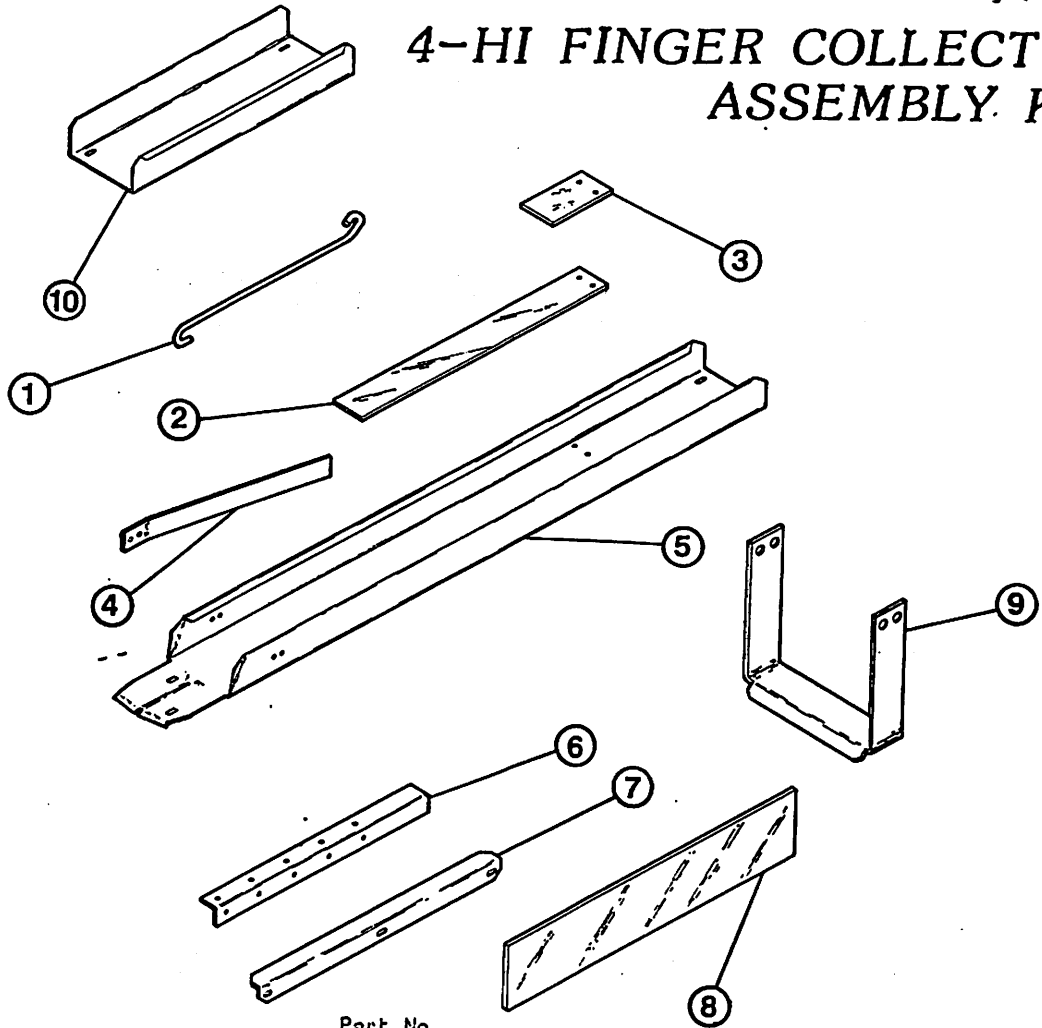




Key	Description	Part No.	Key	Description	Part No.
1	Transition	24304	31	Slack Belt Connector Plate	24379
2	Transition Holder (R.H.)	24358-2	32	1/2-20 x 7/8 Hex Hd Bolt	1316
-	Transition Holder (L.H.)	24358-1	33	SBC Switch Box Assembly (R.H.)	24723-2
3	Inner Chute Side (R.H.)	24852-2	--	SBC Switch Box Assembly (L.H.)	24723-1
4	Inner Chute Side (L.H.)	24852-1	34	Chain Idler Assembly	20359
5	Inner Panel (R.H.)	14473-2	*	Idler Bracket	20047
-	Inner Panel (L.H.)	14473-1	*	Idler Bushing	20358
6	Spacer	24211	*	Chain Idler Roller	20369
7	Slack Belt Connector Brace	24312	*	5/8-11 Hex Hd Bolt	5745-2
8	Belt Bar	24349	*	5/8-11 Flange Hex Nut	5762
9	Rear Return Tension Bar	24352	35	SBC Container Wire	24924
10	Snub Roller Shaft	24354	36	Access Plate Assembly (L.H.)	24919-1
11	Stripper Bar	24353		Access Plate Assembly (R.H.)	24919-2
12	Compression Spring	5534	37	Stripper Brace	24922
13	48 Tooth Sprocket (right side only)	20743	38	Gasket	6777
14	Kick-Out Assembly	25025	39	Switch Box Cover	6776
15	Drive Roller	14490	40	#10 Twin Helix Screw	6980
16	Snub Roller	14482	41	Stripper Plate	24923
17	3/4" Set Collar	1049	42	Flat Washer	1258
18	1" Set Collar	5759	43	1/2" Square Key	2419-3
19	1" Flangette	20191-1	44	1/2-20 x 1/2 Hex Hd Bolt	1487
20	1" Bearing	20191-2	45	1/2" Lockwasher	1667
21	Drive Roller	20014	46	1/2-20 Hex Nut	751
22	1/2" Square Key	2419-7	47	5/16-18 x 1/2 Hex Hd Bolt	4412-1
23	Flange Mount Bearing	6984	48	5/16 Lockwasher	547
24	5/16-18 Bolt	4412-3	49	5/16-18 Hex Nut	2145
25	5/16-18 x 3/4 Carriage Bolt	20125	50	5/8 Set Collar	1386
26	10-24 x 5/8 Hex Hd Mach Screw	1876	51	5/16-18 x 2-3/4 Hex Hd Bolt	4412-3
27	1/2-20 x 2 Truss Hd Screw	4424-3	52	5/16 Flat Washer	546
28	3/16 Pop Rivet	2569	53	10-24 Stamped Nut	135
29	1/2-20 x 3/8 Truss Hd Screw	4424-2			
30	Compression Spring	20724			

*Components of 20359 Chain Idler Assembly.

4-HI FINGER COLLECTOR ASSEMBLY KIT



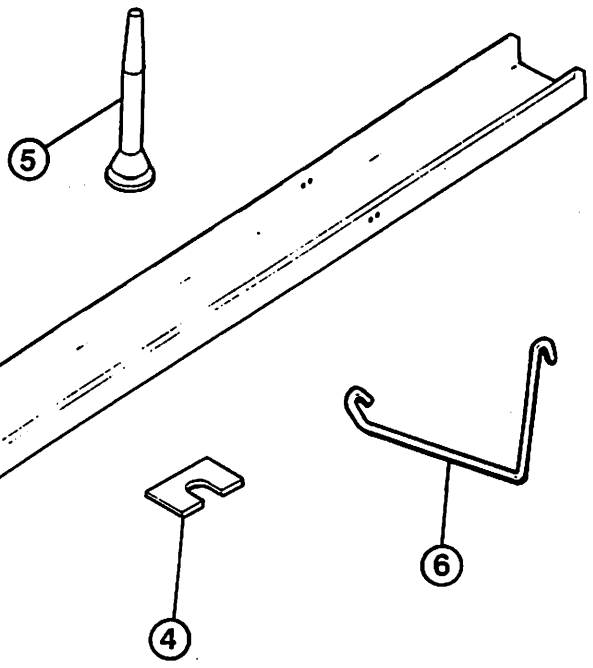
Key Description

- | | |
|----|-----------------------|
| 1 | Tray Support |
| 2 | Upper Belt Riser |
| 3 | Lower Belt Riser |
| 4 | Stainless Steel Sweep |
| 5 | End Egg Tray |
| 6 | Egg Sweep Brace |
| 7 | Sweep Cross Brace |
| 8 | Plastic Egg Sweep |
| 9 | Return Belt Support |
| 10 | Egg Tray Extension |

Part No.

- | |
|---------|
| 24084 |
| 24044 |
| 24045 |
| 14406 |
| 14455 |
| 14426 |
| 24719 |
| 20110-1 |
| 24085 |
| 24533 |

MISCELLANEOUS PARTS

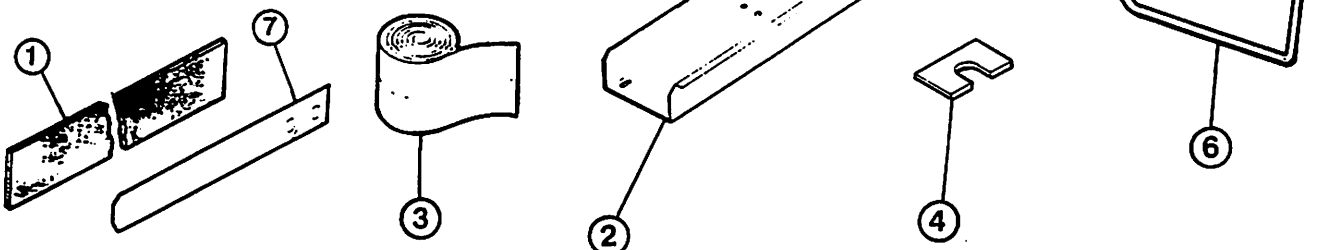


Key Description

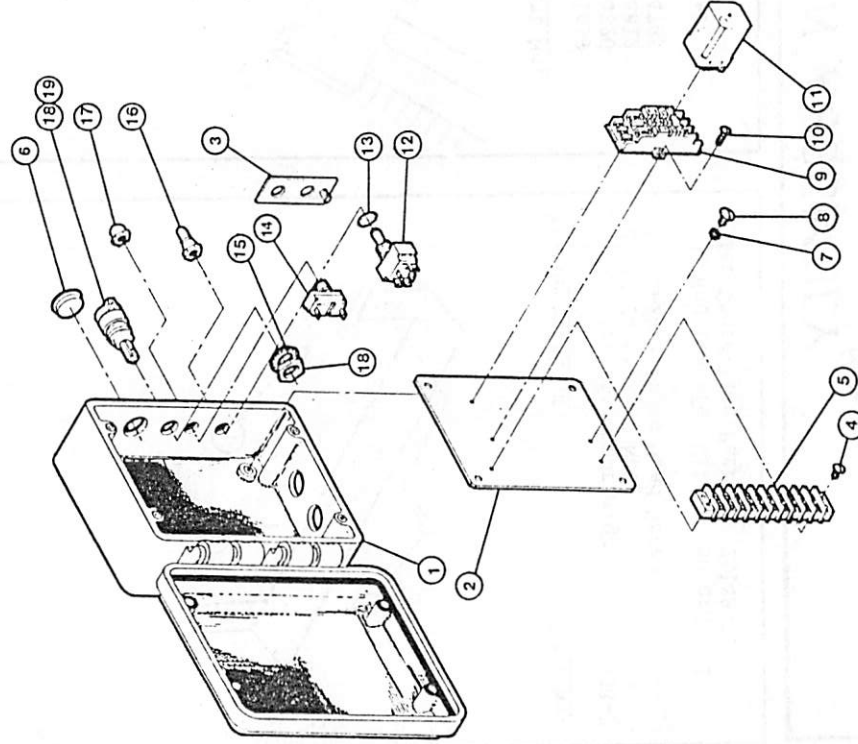
- | | |
|---|--------------------|
| 1 | Foam Tape |
| 2 | Egg Tray Extension |
| 3 | 4" Egg Belt |
| 4 | Mounting Shim |
| 5 | Finger |
| 6 | Belt Return Clip |
| 7 | Plastic Egg Guide |

Part No.

- | |
|-------|
| 20839 |
| 24133 |
| 20133 |
| 21021 |
| 13902 |
| 24007 |
| 21672 |



SINGLE PHASE COLLECTOR CONTROL UNIT



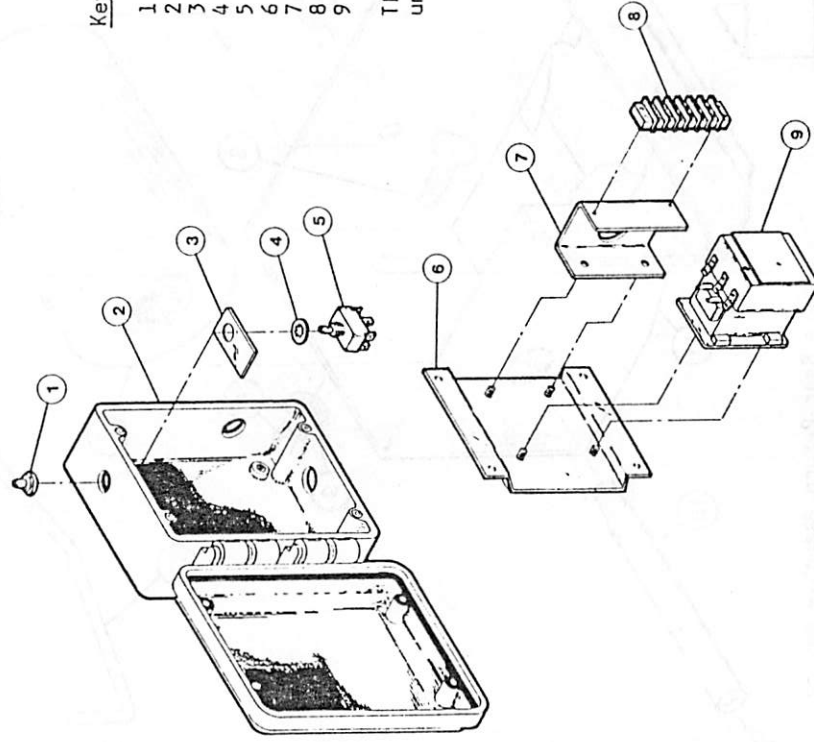
Key Description

Part No.

1	Control Box	23719
2	Component Board	23720
3	Grounding Plate	24415
4	8-32 Rd.Hd.M.S.	4120-3
5	Terminal Block	7347
6	1/2" NPT Hole Plug	23791
7	External Washer	305
8	10-32 X 1/2" Bind.Hd.M.S.	4303-4
9	Relay Socket	20480
10	6-32 X 3/8" Rd.Hd.M.S.	4402-4
11	Control Relay	20479
12	Toggle Switch	20135
13	15/32" Lock Washer	5773
14	Momentary Switch	5785
15	5/8" External Lock Washer	5761
16	Toggle Switch Boot	1739
17	Push Button Boot	20784
18	Panel Fuse Holder	7932
19	Slow Blow Fuse	20472

The Single Phase Control Unit may be ordered under Chore-Time part no. 23722.

3-PHASE COLLECTOR CONTROL UNIT



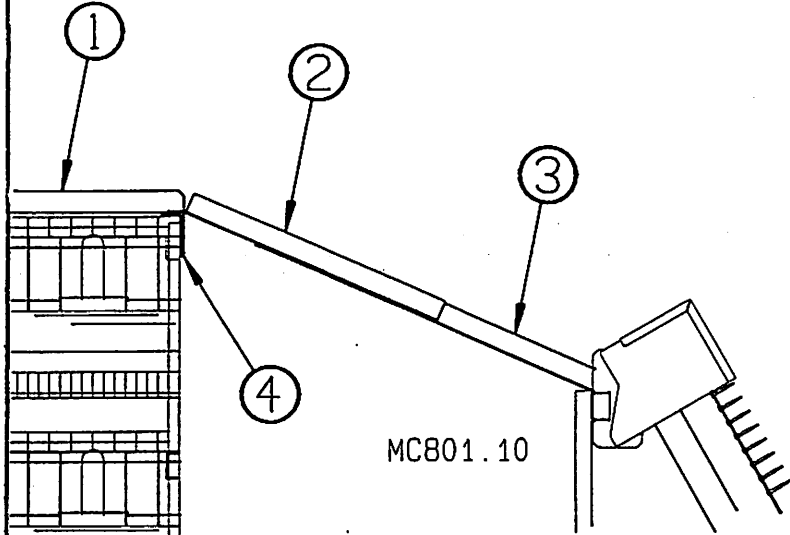
Key Description

Part No.

1	Toggle Switch Boot	1739
2	Box (Mach.)	14392
3	Grounding Plate Assembly	14629
4	1/2" Internal Lockwasher	5760
5	Toggle Switch	14385
6	Mounting Plate Support	14391
7	Terminal Bracket	14383
8	Terminal Block	7270
9	Contactor	20837

The 3-Phase Control Unit may be ordered under Chore-Time part no. 14650.

COLLECTOR END FRAMING



Key Description

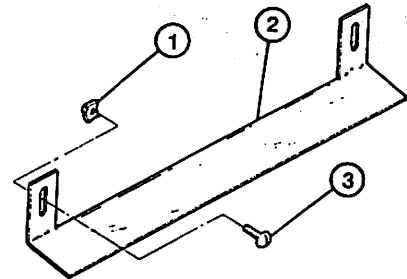
- | | |
|---|----------------------------|
| 1 | Power End Horizontal Brace |
| 2 | End Brace Angle |
| 3 | End Brace |
| 4 | Brace Angle Clip |

Part No.

- | |
|-------|
| 21659 |
| 14820 |
| 14812 |
| 14785 |

The End Bracing Kit may be ordered under Chore-Time Part No. 14620.

ROD TRANSFER KIT



Key Description

- | | | |
|---|----------------------------|---------|
| 1 | Rod Transfer-Four High | 14538-7 |
| 2 | 10-24 Stamped Nut | 135 |
| 3 | 10-24x1/2 Truss Head Screw | 1795 |

Part No.

4-Hi Rod Transfer Kit may be ordered under Chore-Time Part No. 24148-7.

REAR RETURN ASSEMBLY

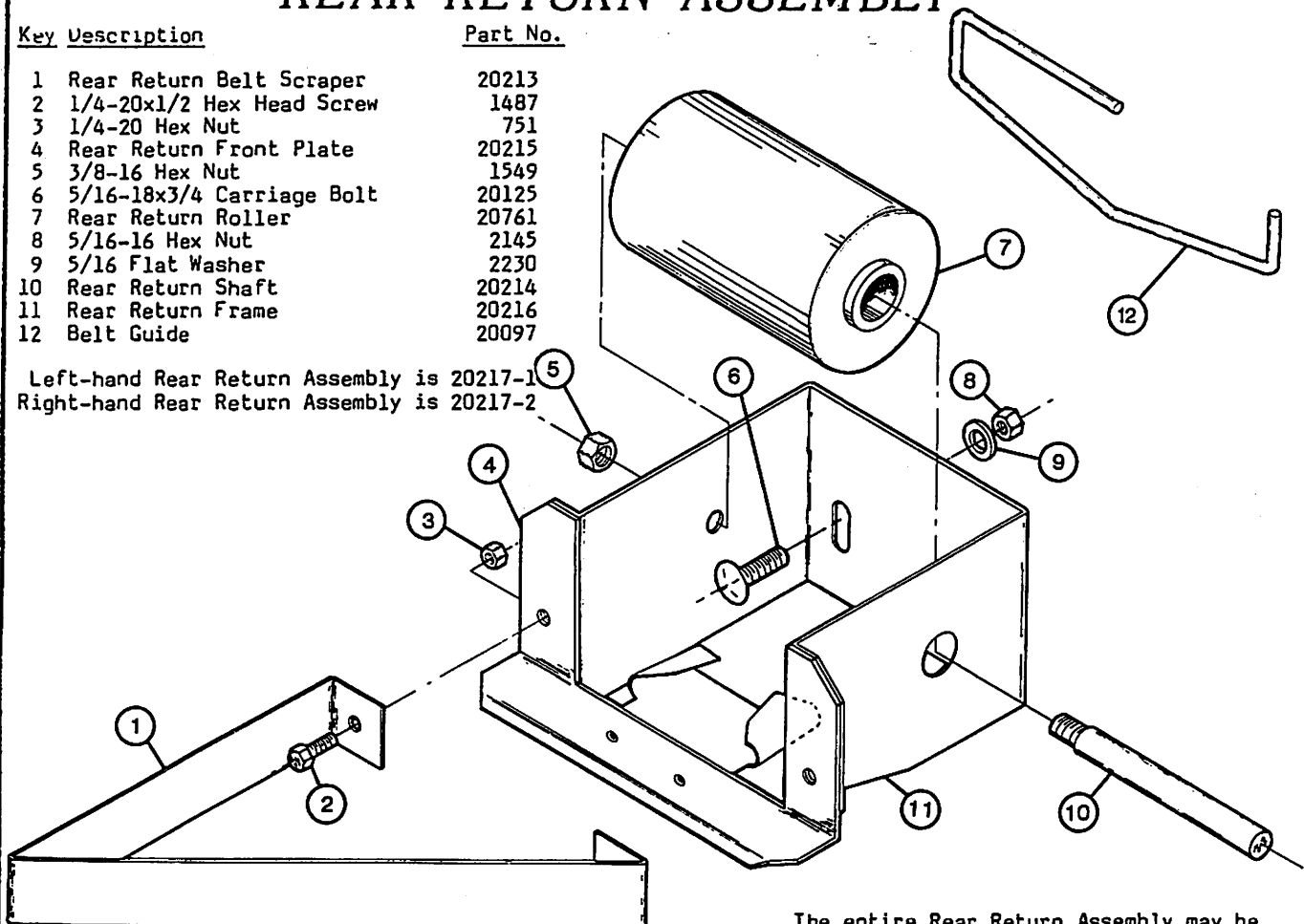
Key Description

- | | |
|----|---------------------------|
| 1 | Rear Return Belt Scraper |
| 2 | 1/4-20x1/2 Hex Head Screw |
| 3 | 1/4-20 Hex Nut |
| 4 | Rear Return Front Plate |
| 5 | 3/8-16 Hex Nut |
| 6 | 5/16-18x3/4 Carriage Bolt |
| 7 | Rear Return Roller |
| 8 | 5/16-16 Hex Nut |
| 9 | 5/16 Flat Washer |
| 10 | Rear Return Shaft |
| 11 | Rear Return Frame |
| 12 | Belt Guide |

Part No.

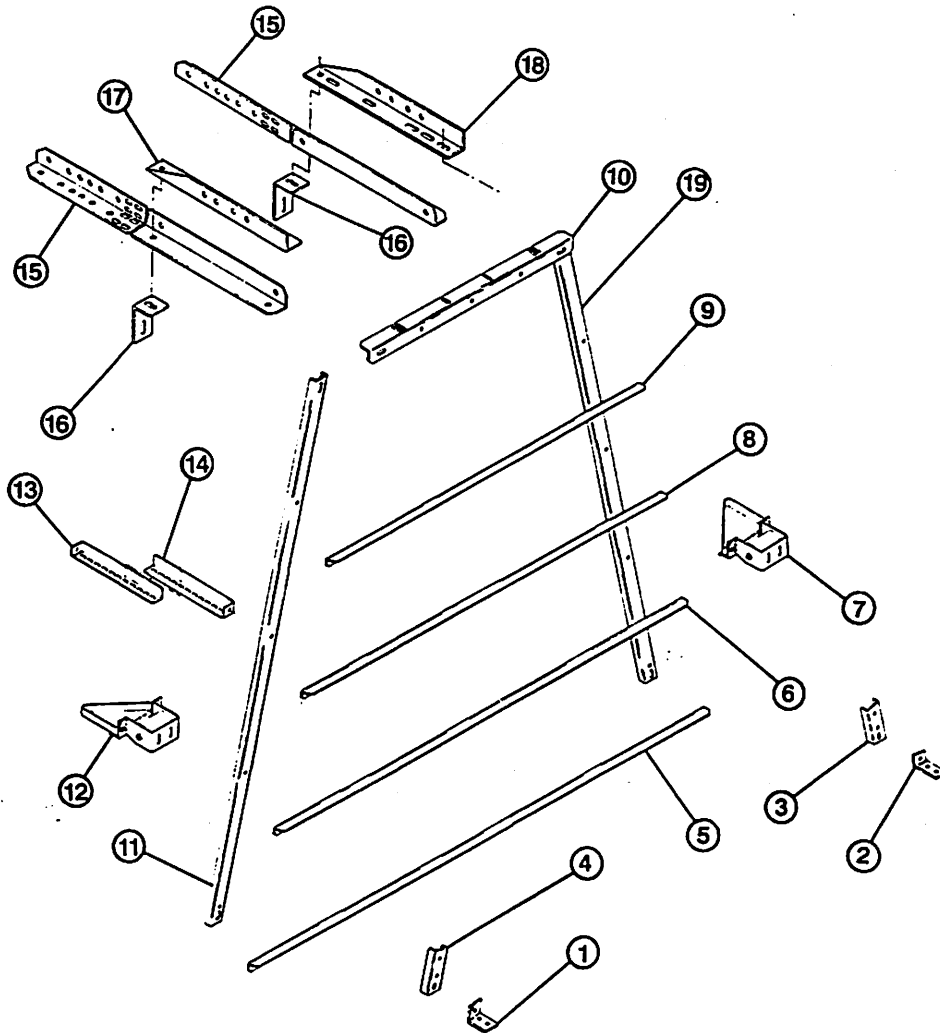
- | |
|-------|
| 20213 |
| 1487 |
| 751 |
| 20215 |
| 1549 |
| 20125 |
| 20761 |
| 2145 |
| 2230 |
| 20214 |
| 20216 |
| 20097 |

Left-hand Rear Return Assembly is 20217-1
Right-hand Rear Return Assembly is 20217-2



The entire Rear Return Assembly may be ordered under Chore-Time part no. 14791

4-HI REAR RETURN FRAMING KIT



Key	Description	Part No.
1	End Base (L.H.)	15181-1
2	End Base (R.H.)	15181-2
3	Leg Riser (R.H.)	14813-2
4	Leg Riser (L.H.)	14813-1
5	Rear Return Cross Frame	14803
6	Rear Return Cross Frame	14804
7*	Rear Return Assembly (L.H.)	20217-1
8	Rear Return Cross Frame	14805
9	Rear Return Cross Frame	14806
10	End Brace Angle	14794
11	Rear Return "A" Frame	14796-2
12*	Rear Return Assembly (L.H.)	20217-2
13	End Brace	21645
14	End Brace	21644
15	Power End Horizontal Brace	21659
16	Brace Angle Clip	14785
17	Horizontal Mid-Brace	13061-2
18	Horizontal Mid-Brace	13061-1
19	Rear Return "A" Frame	14796-1

The entire Rear Return Framing Kit may be ordered under Chore-Time Part No. 14579.

* Not included in the 14579 Rear Return Framing Kit. Shown for assembly purposes only.

MAINTENANCE OF THE EQUIPMENT

DAILY MAINTENANCE

1. Before operating the equipment, check all lines to be sure nothing is blocking the egg belts.
2. Observe the Rear Returns while making daily rounds. All belts should track straight through the Rear Returns. Adjust if necessary.
3. Turn each machine to "Manual" switch position to check for blown fuse/the fuse is blown if the indicator lights.
4. Check flow controls for satisfactory operation.

WEEKLY MAINTENANCE

1. Check Egg Collector De-Escalators for tracking and alignment. Adjust if necessary.
2. Clean the collector carefully. Do not allow dirt or feathers to build up on the collector equipment.

MONTHLY MAINTENANCE

1. Check for dirt build-up around the collector power unit. Clean as needed.
2. Check for dirt build-up under the cross conveyor belt in front of each machine. Clean as needed.
3. Clean idler end framing.
4. Oil drive chains on the collector.

ADJUST BELT TRACKING

The Adjusting Roller, screws, and nuts on the sides of the modules are used to adjust the tracking of the egg belt. Since the belt will track in the direction its tightest, adjust the roller accordingly and tighten bearing bolts.

ADJUST MAIN DRIVE CHAIN

The Main Drive Chain tension may be adjusted by loosening the 5/8-11 hex nut on the Chain Idler Assembly. Slide the Chain Idler Assembly forward or backward to acquire the desired chain tension, then retighten the nut.

ADJUST SNUBB ROLLER TENSION

The inside adjusting spring for the Snub Roller is compressed to approximately 1" (25 mm) when shipped. If necessary, adjust the outside spring to approximately 1" (25 mm) by threading the nut down on spring. If more tension is desirable, compress both springs evenly. BE CAREFUL NOT TO OVER-TIGHTEN, IF SPRINGS ARE FULLY COMPRESSED DAMAGE WILL OCCUR.

ADJUST CLEATED BELT TENSION

Remember when determining proper belt tension; the Cleated Belt needs only needs to be tight enough to avoid slippage. Adjust the tension by threading the adjusting nuts down on the compression spring on the Idler Roller.

ADJUST FINGER DRIVE WHEEL CHAIN

The Finger Wheel Drive Chain may be adjusted by loosening the two bolts holding the sprocket bracket in place. The adjustment can be made by sliding the sprocket bracket forward or backward in the slots.

Contact your nearby CHORE-TIME distributor or representative for additional information or parts.

Chore-Time Equipment, A Division of CTB, Inc.
P.O. Box 2000, Milford, Indiana 46542-2000 U.S.A.

Printed in U.S.A.