



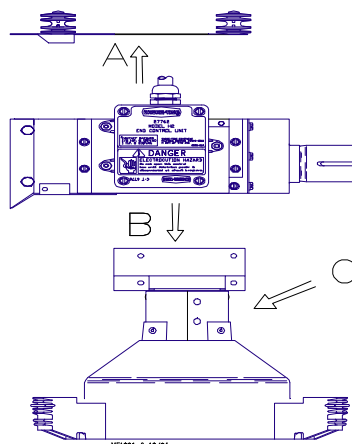
# Model H2 Update Repair Kit

Part No. 34483

The Model H2 Update Repair Kit is designed to be used on Model H2 Control Units to prevent feed waste around the Feed Cone.

Refer to the instructions below and **Figure 1** for installation information.

1. Disconnect power to the system.
2. Remove the Feeder Pan from the Feed Cone on the (end) Control Unit. Do not discard the Feeder Pan.
3. Remove the Control Assembly Cover from the Control Unit. Do not discard.

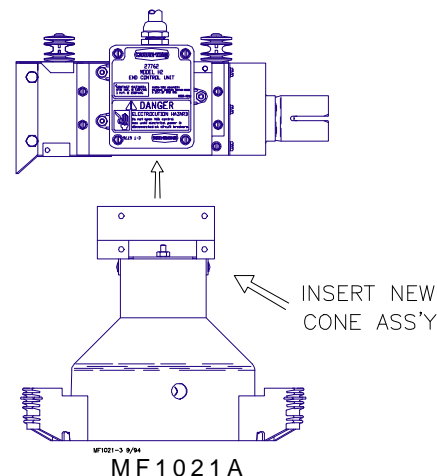
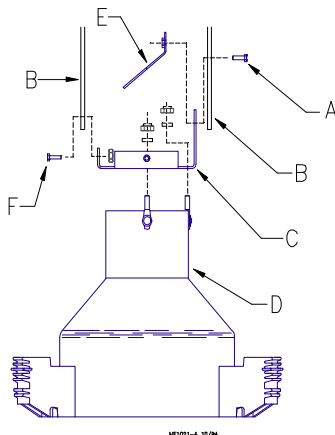


## Helpful Hint

When removing existing Switch Bracket, it may be necessary to loosen some of the hardware near the bottom of the control to avoid interference.

Retighten all hardware when installation is complete.

4. Loosen the (4) bolts securing the Switch Bracket/Feed Cone Assembly in the Control Unit Body.  
Discard the Switch Bracket, Feed Cone Assembly, and hardware.
5. Secure the new Feed Cone Assembly to the new Switch Bracket using (3) 10-24 lock nuts and washers, supplied.
6. Position the new Switch Bracket/Feed Cone Assembly in the Control Unit Body.  
Secure the Switch Bracket to the Control Unit Body in the (2) lower holes, using 10-24 bolts and nuts supplied.  
Secure the Switch Bracket to the Control Unit Body in the (2) upper holes, using 10-24 bolts supplied.
7. Install the Control Assembly Cover on the Control Unit opening.
8. Install the existing Feeder Pan on the new Feeder Cone.
9. Reconnect power to the system.



Contact your nearby Chore-Time distributor or representative for additional parts and information.

Chore-Time Equipment,  
A division of CTB, Inc.  
P.O. Box 2000  
Milford, Indiana 46542-2000  
Phone: 219-658-4101

printed in the U.S.A.

Effective September 1994