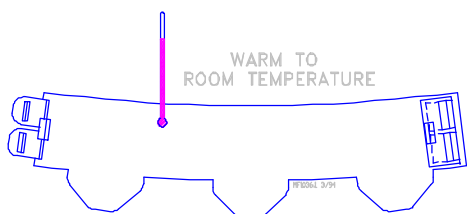




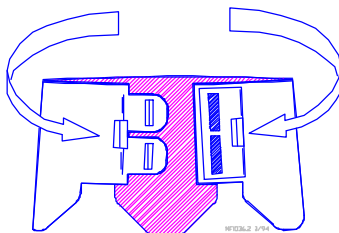
## Model H2 Feed Collar Instruction for NEW or EXISTING installations

### NEW INSTALLATIONS

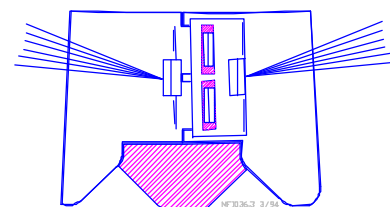
- 1 For ease of assembly, (flat) Feed Collars should be room temperature or warmer.



- 2 Make sure Chore-Time logo is toward outside. Roll the Feed Collar and insert "fingers" into locking tabs.



- 3 Use pliers to squeeze the tabs into the locked position. Install the Feed Collar on the Support Cone of the H2 Feeder.



### EXISTING INSTALLATIONS

The H2 Feed Collar Update Kit may be used to replace existing Feed Collars in the field.

#### Installation

The Feed Collars may be harder to install if they have been stored in a very cold environment.

1. Using tin snips or other cutting device, carefully cut (and discard) the existing Feed Collars from the feeders.
2. Wrap the Feed Collar around the feeder, as shown in Figure 1.

Properly orientation of the Feed Collar is very important;

a). Make sure the Chore-Time Logo is upright and toward the outside.

b). The locking tabs should not be located directly over the rib of the feeder.

3. Insert the "fingers" into the locking tabs, as shown in Figure 2.

Use pliers to squeeze the tabs into the locked position.

4. Make sure the Feed Collar will slide down to completely close the feed windows.

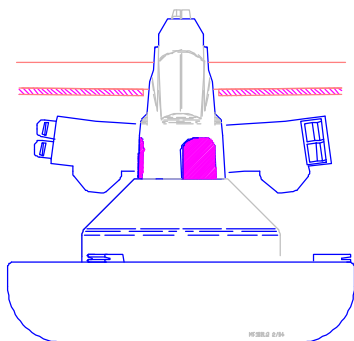


Figure 1.

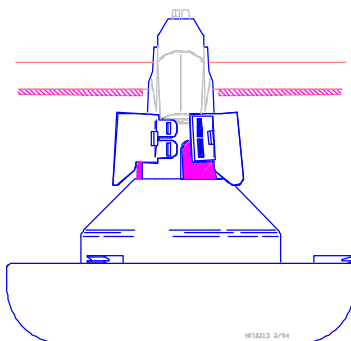


Figure 2.

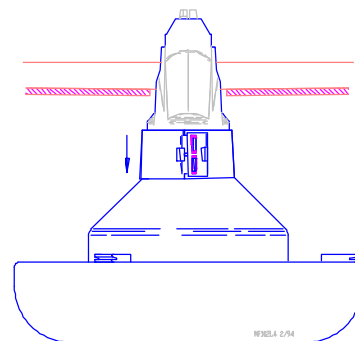


Figure 3.

Contact your nearby Chore-Time distributor or representative for additional parts and information.

Chore-Time Equipment, A Division of CTB, Inc.  
P.O. Box 2000, Milford, Indiana 46542-2000 U.S.A.

MF1037A

Effective Mar. 1994