

The Chore-Time Warranty

Chore-Time Equipment warrants each new product manufactured by it to be free from defects in material or workmanship for one year from the date of initial installation by the original purchaser. If such a defect is found by Chore-Time to exist within the one year period, Chore-Time will, at its option, (a) repair or replace such product free of charge, F.O.B. the factory of manufacture, or (b) refund to the original purchaser the original purchase price, in lieu of such repair or replacement.

Additional extended warranties are herewith provided to the original purchaser as follows:

1. TURBO™ and RLX™ Fans, less motors, for three years from date of installation.
- *2. Poultry feeder pans that become unusable within five years from date of installation. Warranty prorated after three years usage.
3. MEAL-TIME® Hog Feeder pans that become unusable within five years of installation.
4. Rotating centerless augers, excluding applications involving High Moisture Corn (exceeding 18%), for ten years from date of installation. Note: MULTIFLO® and applications involving High Moisture Corn are subject to a one year warranty.
5. Chore-Time manufactured roll-formed steel auger tubes for ten years from date of installation.
- *6. Laying cages that become unusable within ten years. Warranty prorated after three years usage.
- *7. ULTRAFLO® Auger and ULTRAFLO® Feed Trough (except ULTRAFLO® Trough Liners) are warranted for a period of five (5) years from date of original purchase against repeated breakage of the auger or wear-through of the feed trough caused solely by the auger.

Conditions and limitations:

1. The product must be installed and operated in accordance with instructions published by Chore-Time or warranty will be void.
2. Warranty is void if all components of a system are not supplied by Chore-Time.
3. This product must be purchased from and installed by an authorized Chore-Time dealer or certified representative thereof, or the warranty will be void.
4. Malfunctions or failure resulting from misuse, abuse, negligence, alteration, accident, or lack of proper maintenance shall not be considered defects under this warranty.
5. This warranty applies only to systems for the care of poultry and livestock. Other applications in industry or commerce are not covered by this warranty.

Chore-Time shall not be liable for any consequential or special damage which any purchaser may suffer or claim to have suffered as a result of any defect in the product. "Consequential" or "special damages" as used herein include, but are not limited to, lost or damaged products or goods, costs of transportation, lost sales, lost orders, lost income, increased overhead, labor and incidental costs and operational inefficiencies.

THIS WARRANTY CONSTITUTES CHORE-TIME'S ENTIRE AND SOLE WARRANTY AND CHORE-TIME EXPRESSLY DISCLAIMS ANY AND ALL OTHER WARRANTIES, INCLUDING, BUT NOT LIMITED TO, EXPRESS AND IMPLIED WARRANTIES AS TO MERCHANTABILITY, FITNESS FOR PARTICULAR PURPOSE SOLD AND DESCRIPTION OR QUALITY OF THE PRODUCT FURNISHED HEREUNDER.

Any exceptions to this warranty must be authorized in writing by an officer of the company. Chore-Time reserves the right to change models and specifications at any time without notice or obligation to improve previous models.

*See separate Chore-Time Cage Wire Warranty as to these products.

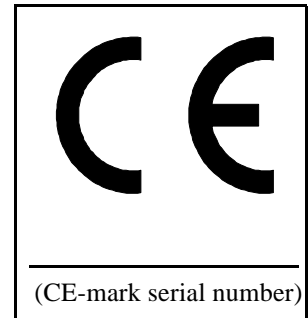
CHORE-TIME EQUIPMENT, A Division of CTB, Inc.
P.O. Box 2000, Milford, Indiana 46542-2000 U.S.A.

Support Information

The Breeder Control is designed to assist in inventorying and metering of poultry and livestock feed. Using this equipment for any other purpose or in a way not within the operating recommendations specified in this manual will void the warranty and may cause personal injury and/or death.

This manual is designed to provide comprehensive planning, installation, operation, and parts listing information. The Table of Contents provides a convenient overview of the information in this manual. The Table of Contents also specifies which pages contain information for the sales personnel, installer, and consumer (end user).

Chore-Time Equipment recognizes CE Mark and pursues compliance in all applicable products. Fill in the CE-Mark serial number in the blank space provided for future reference.



Please fill in the following information about your Chore-Time feeding system. Keep this manual in a clean, dry place for future reference.

Distributor's Name _____

Distributor's Address _____

Distributor's Phone _____ **Date of Purchase** _____

Installer's Name _____

Installer's Address _____

Installer's Phone _____ **Date of Installation** _____

System Specifications _____

Feed Delivery System Supplying _____

Table of Contents

Topic	Page	User*
The Chore-Time Warranty	2	C, D
Support Information	3	C, D, I
Safety Information	4	C, I
Introduction	5	C, D, I
Features & Functions	6	C, D, I
Time Clock Programming	7 - 8	C, I
Wiring Diagrams for ULTRAFLO Breeder Feeder Systems	9 - 12	I
Wiring Diagrams for ULTRAPAN Breeder Feeder Systems	13 - 18	I
Wiring Diagrams for Pan Breeder Feeder Systems	19 - 22	I
Miscellaneous Wiring Diagrams	23 - 28	I
Breeder Control Parts List (Part No. 34380)	29	C, D, I
4-Channel Breeder Control Parts List (Part No. 36550)	30	C, D, I
Trouble Shooting	31 - 34	C, D, I

*Legend: C = Customer, D = Distributor, I = Installer

Safety Information

Caution, Warning and Danger Decals have been placed on the equipment to warn of potentially dangerous situations. Care should be taken to keep this information intact and easy to read at all times. Replace missing or damaged safety signs.

Using the equipment for purposes other than specified in this manual may cause personal injury or damage to the equipment.

Safety–Alert Symbol

This is a safety–alert symbol. When you see this symbol on your equipment, be alert to the potential for personal injury. Chore-Time equipment is designed to be installed and operated as safely as possible...however, hazards do exist.



Signal Words

Signal words are used in conjunction with the safety–alert symbol to identify the severity of the warning.

DANGER - - indicates an imminently hazardous situation which, if not avoided, **WILL** result in death or serious injury.

WARNING - - indicates a potentially hazardous situation which, if not avoided, **COULD** result in death or serious injury.

CAUTION - - indicates a hazardous situation which, if not avoided, **MAY** result in minor or moderate injury.



DANGER—ELECTRICAL HAZARD

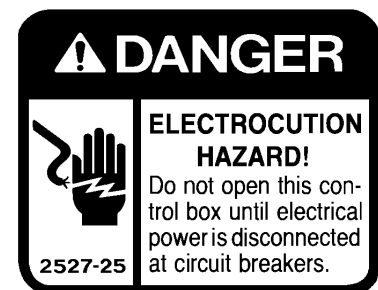
Disconnect electrical power before inspecting or servicing equipment unless maintenance instructions specifically state otherwise.

Ground all electrical equipment for safety.

All electrical wiring must be done by a qualified electrician in accordance with local and national electric codes.

Ground all non-current carrying metal parts to guard against electrical shock.

With the exception of motor overload protection, electrical disconnects and over current protection are not supplied with the equipment.



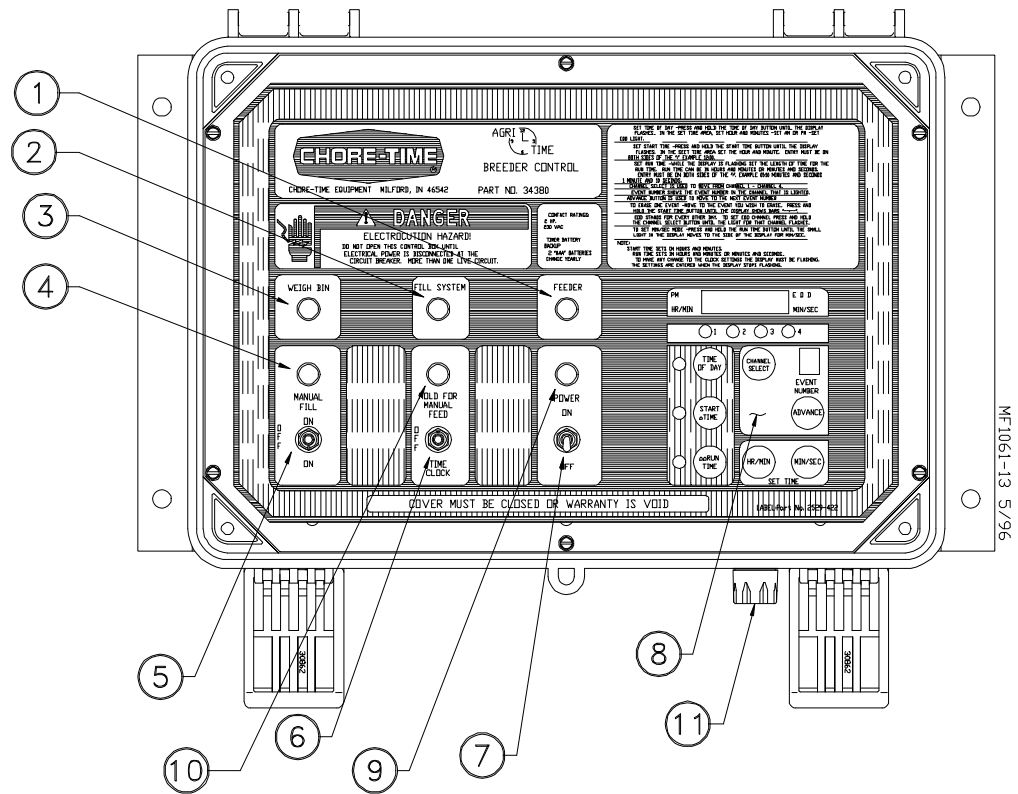
Introduction

This instruction is designed to provide the necessary information for installation and operation of the 34380 Breeder Control and the 36550 4-Channel Breeder Control.

The Breeder Control is designed to meet the feeding needs of poultry parent stock.

Two versions of the Breeder Control are available. The 34380 Breeder Control is a single box unit, as shown below, that includes two output relays. The 36550 4-Channel Breeder Control is a dual box unit that includes four output relays. The additional two output relays, located in the second box, may be used for lights, waterers, etc.

Figure 1 shows the front of the 34380 Breeder Control. The individual switches, pilot lights, and the AGRI-TIME Timer are noted.



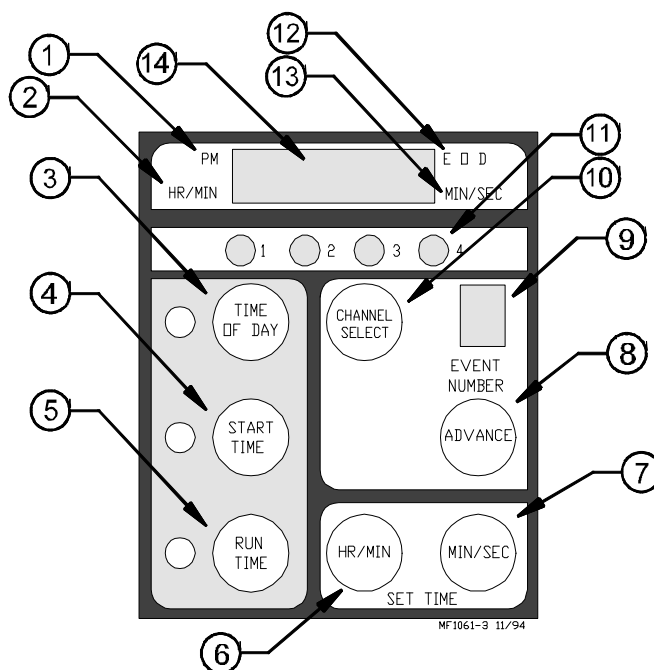
Key	Description
1	Indicates feeder running.
2	Indicates fill system running.
3	Indicates weigh bin is filling.
4	Indicates the fill system is being controlled manually.
5	Toggle switch used to start the fill system.
6	Toggle switch used to select fill system mode of operation: MANUAL or AUTO.
7	Main power toggle switch.
8	AGRI-TIME Timer
9	Indicates power switch is in the ON position.
10	Indicates feeder is being controlled manually.
11	3 Amp. MDA Fuse

Features & Functions

- The Agri-Time™ Time Clock has (4) programmable channels.
- Each channel can have up to 8 events (feedings, waterings, etc.).
- Each event will have a start time and run time programmed into the timer. The start times are programmed in hours/minutes. The run times are programmed in hours/minutes or minutes/seconds.
- Any or all the channels can be set up as an Every Other Day channel.
- Two “AAA” batteries are used as a backup only for time of day if power is temporarily removed. The batteries should be replaced annually.

Battery replacement procedure: Cut the wire tie to remove batteries. Replace with new batteries (observe + and - poles of battery). Use a wire tie to secure the new batteries in the battery holder.

- Program settings will be stored in memory until a program change is made.
Power loss will not erase the programs.
- The Start Time, Run Time, and Channel Select buttons have dual functions.



Key	Description
1	P.M. Indicator
2	Hour/Minute Indicator
3	Used to set time of day, a.m./p.m., and skip mode. (24 hr. time)
4	Used to set start time and to erase individual operations.
5	Used to set length of run time. Also used to toggle between hours/minutes and minutes/seconds.
6	Used to set hours/minutes.
7	Used to set minutes/seconds
8	Used to advance to next event in channel.
9	Displays the event number being programmed.
10	Used to advance through the channels. Also used to set skip channel.
11	Indicates which channel(s) is active.
12	Indicates the day to be skipped (EOD "ON" skips today)
13	Minutes/Seconds Indicator
14	Display Window

Time Clock Programming

Before beginning programming the time clock, fill in the desired starting times and running times. This will make programming the clock much easier.

IMPORTANT: Channel 1 must be used as the feed channel.

Channel 2 must be used as the fill system channel.

Channels 3 & 4 may be used to control other equipment, lights, etc.
Additional relays (not supplied) are required to use Channels 3 & 4.
See page 24 for wiring information.

A start time and a run time must be entered for each desired operation. If either are missing or incomplete, the operation will be ignored.

The display must be flashing in order to make any program changes.

When the display stops flashing, the new information will be added.

Output Relays for channels 3 & 4 included with 36550 Breeder Control only.

CHANNEL 1		CHANNEL 2		CHANNEL 3		CHANNEL 4	
START TIME	RUN TIME	START TIME	RUN TIME	START TIME	RUN TIME	START TIME	RUN TIME

To Reset the Time Clock:

The time clock must be reset upon initial installation.

With power off to the system, press and hold the START TIME button while turning the power on. This will erase any entries that were programmed in the factory or field.

To Set the Time of Day:

Press and hold the TIME OF DAY button until the display begins to flash.

Use the HR/MIN key on the time clock. Be sure to set the clock to the appropriate a.m. or p.m.

NOTE: Entries must be on both sides of the colon (i.e. 01:20).

To Set a Start Time:

Press and hold the START TIME button until the display starts flashing.

Enter the start time for the first channel using the buttons in the SET TIME area of the time clock. The start times will be set in hours and minutes. Be sure to set the appropriate a.m. or p.m. settings.

NOTE: Entries must be on both sides of the colon (i.e. 06:00, see inset on page 8).

To Enter a Run Time:

Use the buttons in the SET TIME area of the time clock. The run times may be set in minutes/seconds or hours/minutes (i.e. 01:20).

NOTE: To set the run times in minutes/seconds, press and hold the RUN TIME button until the indicator beside MIN/SEC is illuminated.

NOTE: Entries must be on both sides of the colon (i.e. 01:20, see inset at left).

- IMPORTANT -

The Start Time and Run Time shown below make up **one** event of **one** channel.

Both the Start Time and Run Time are required for an event to be programmed.

CHANNEL 1		CH.
START TIME	RUN TIME	START TIME
06:00	01:20	

To Set Every Other Day Mode:

NOTE: The control must be in the Time of Day mode in order to set Every Other Day Mode.

Press the HR/MIN button to advance the display until the indicator beside the EOD (skips today) TODAY is illuminated. **Make sure the appropriate a.m. or p.m. light is displayed.** This will set the proper sequence for the skip mode. It does not, however, set the EOD (skips today) Channel. The EOD (skips today) Channel will be set later in the programming.

NOTE: E.O.D. = Every Other Day. If the EOD (skips today) light is illuminated, that day will be the skip day (i.e. EOD light on = no feed that day). The EOD (skips today) light in the display does not assign the EOD (skips today) Channel.

To Assign EOD (Skips Today) Mode to a Channel:

To ASSIGN EOD (skips today): Press and hold the CHANNEL SELECT button until the appropriate CHANNEL indicator starts to flash.

To REMOVE EOD (skips today): Press and hold the CHANNEL SELECT button until the indicator stops flashing.

NOTE: When the EOD (skips today) light is illuminated in the display, the channel that is blinking **will not** feed.

To Move Through a Channel:

Press the ADVANCE button to move to the next event in a channel. The EVENT NUMBER display window changes as the ADVANCE button is pressed.

Follow the steps above to set the remainder of the channels and events.

To Erase a Single Event:

Press the CHANNEL SELECT button and the ADVANCE button to select the event you wish to remove.

Press and hold the START TIME button until the display shows bars. This will remove the selected event (start time and run time).

To Erase All Start Times and Run Times:

Remove power to the Control Box.

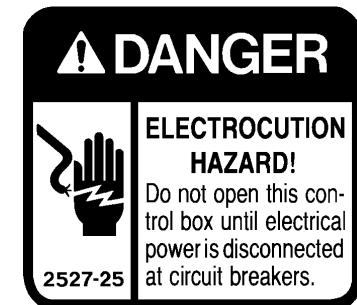
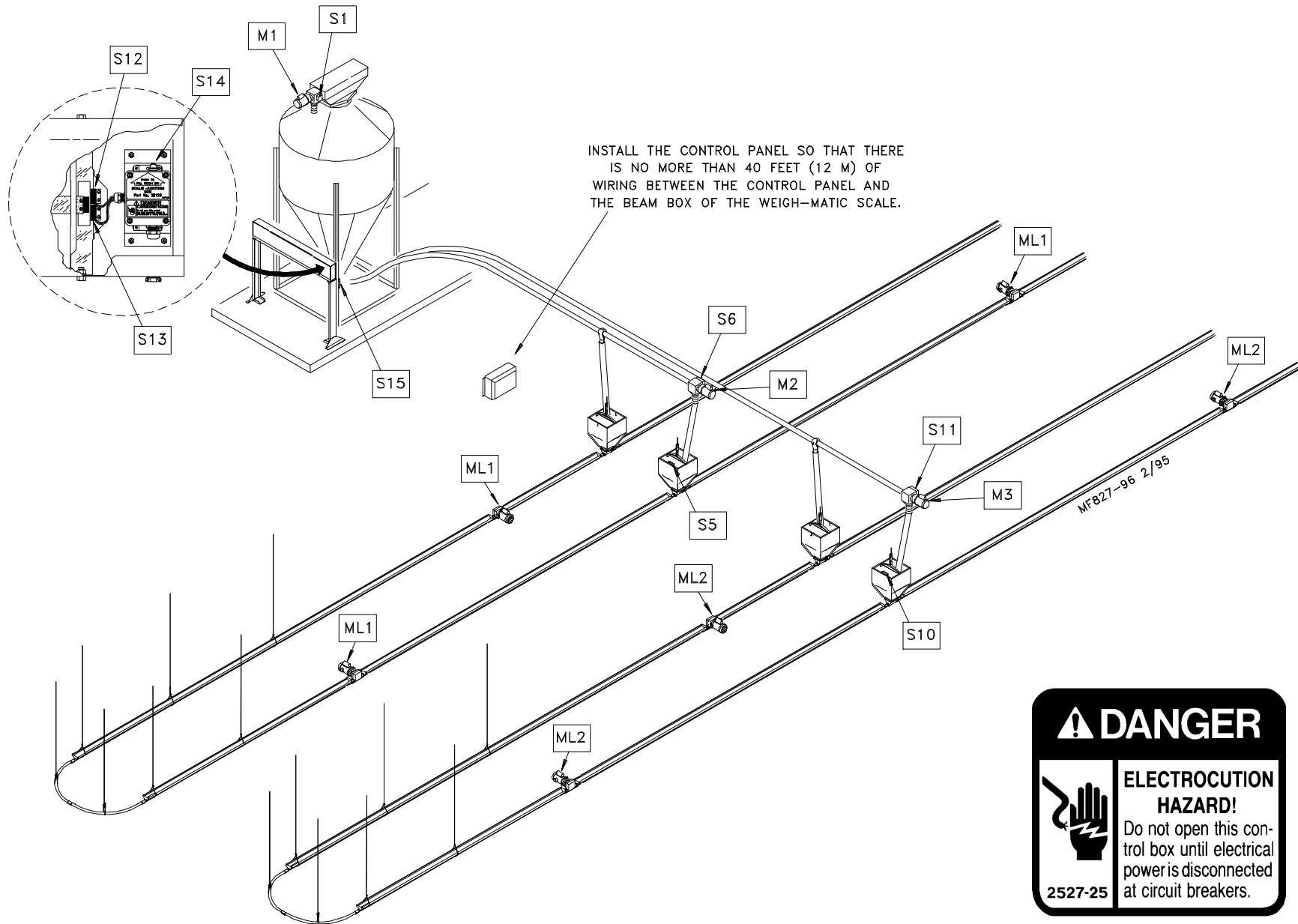
Press and hold the START TIME button (for approximately 5 seconds) while turning power on to the Control Box. This should remove all entries from the program. However, the time of day will not be erased.

To Review the Program:

Press and hold the START TIME button until the display begins to flash. Using the START TIME, RUN TIME, ADVANCE, and CHANNEL SELECT buttons you can view each of the programmed entries (events).

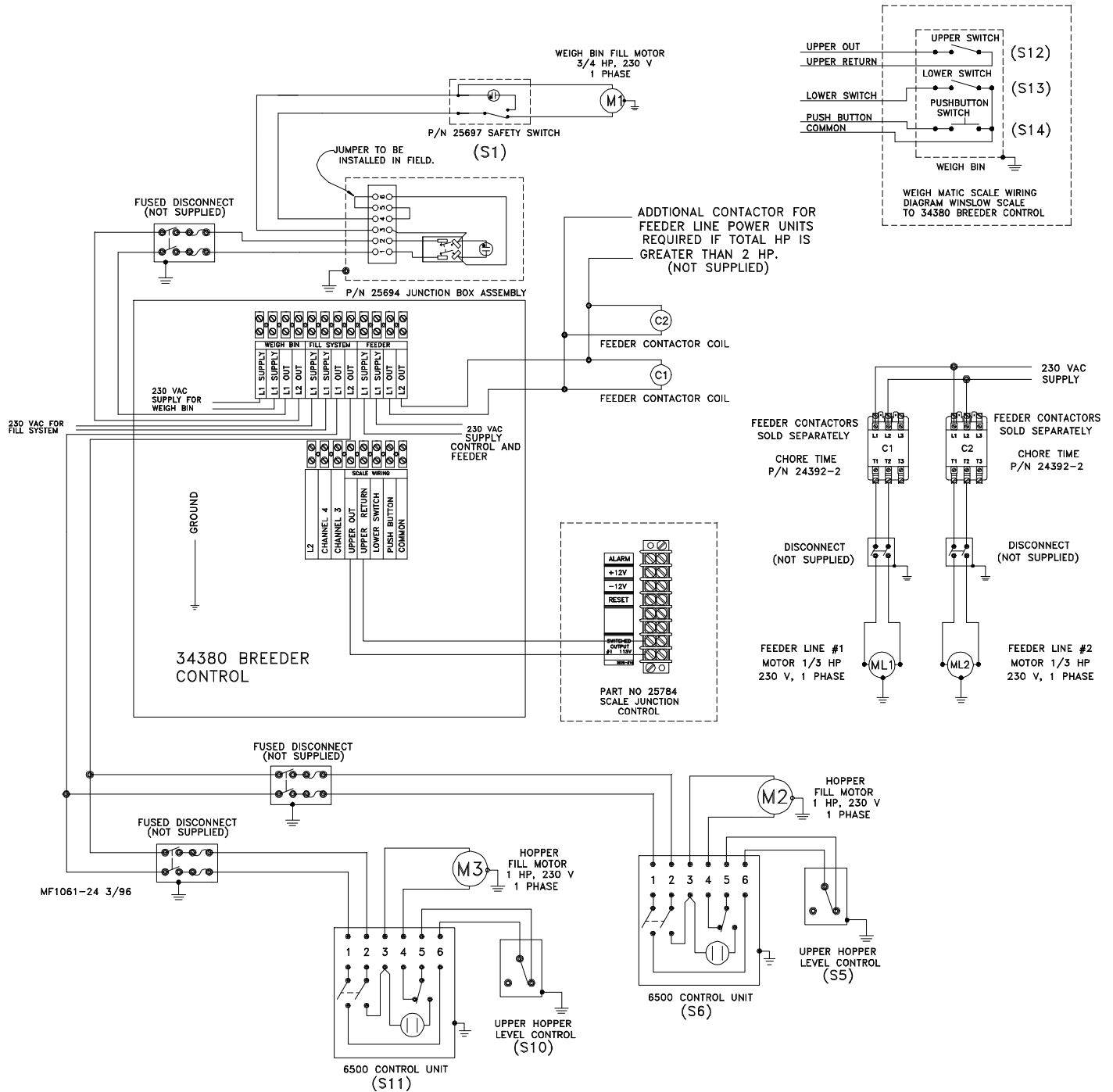
ULTRAFLO Component Location Diagram

Wire the system according to the applicable wiring diagram. Refer to this Component Layout Diagram to determine the motor, switch, etc. locations.



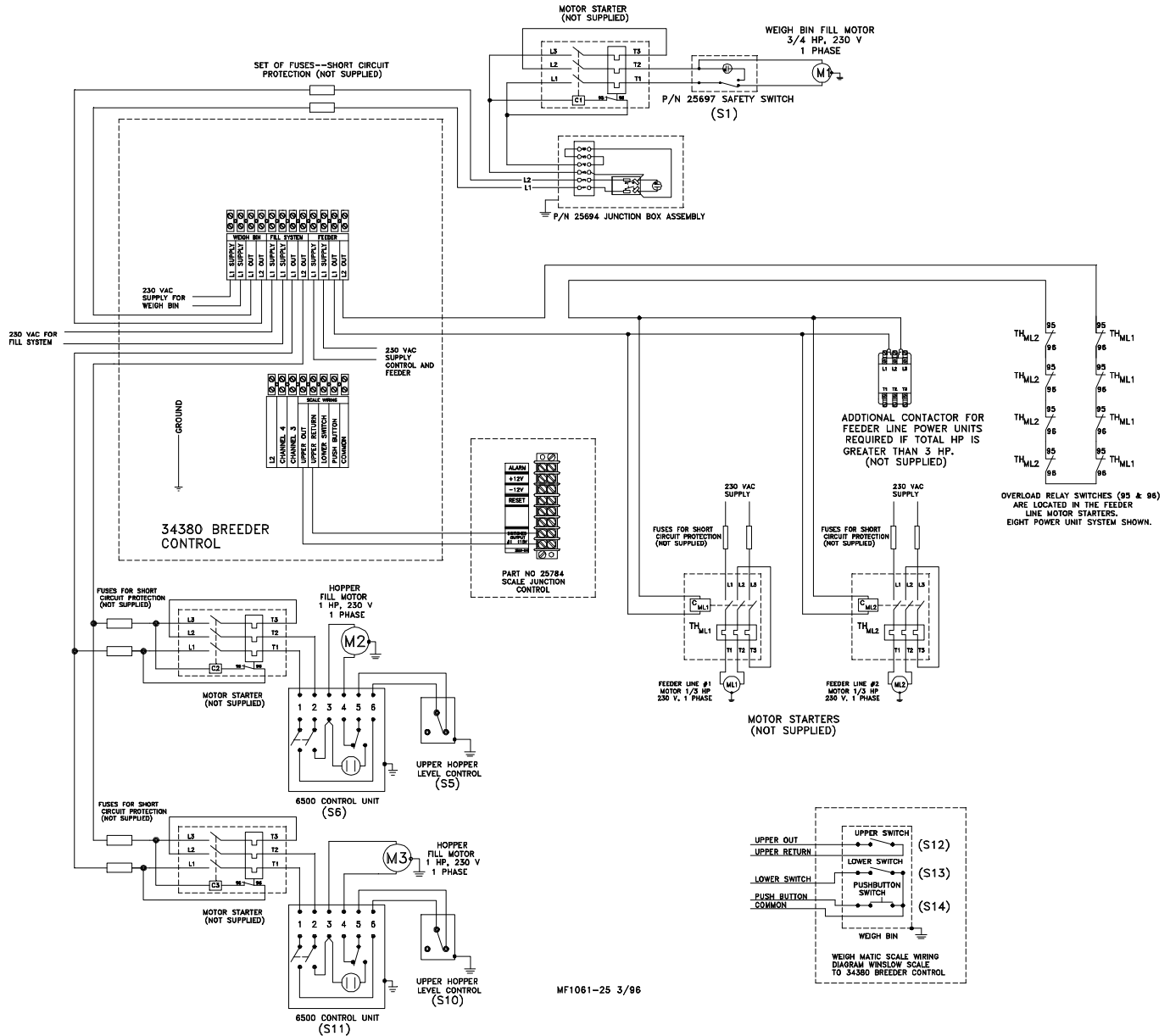
34380 Breeder Control Wiring Diagram

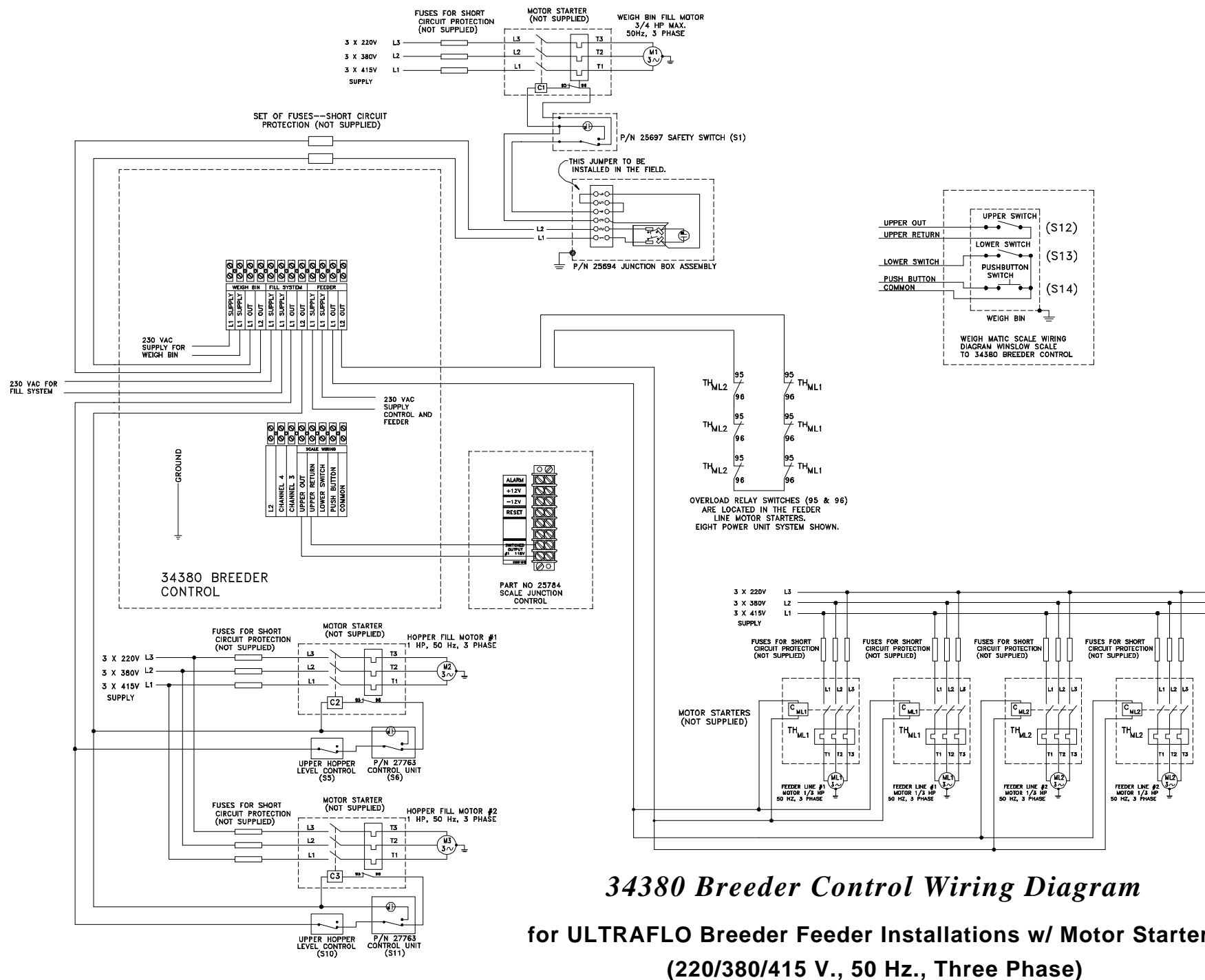
for ULTRAFLO Breeder Feeder Installations w/o Motor Starters
(230 V., 50/60 Hz., Single Phase)



34380 Breeder Control Wiring Diagram

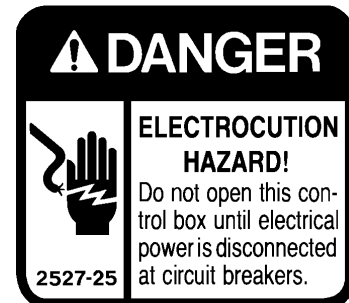
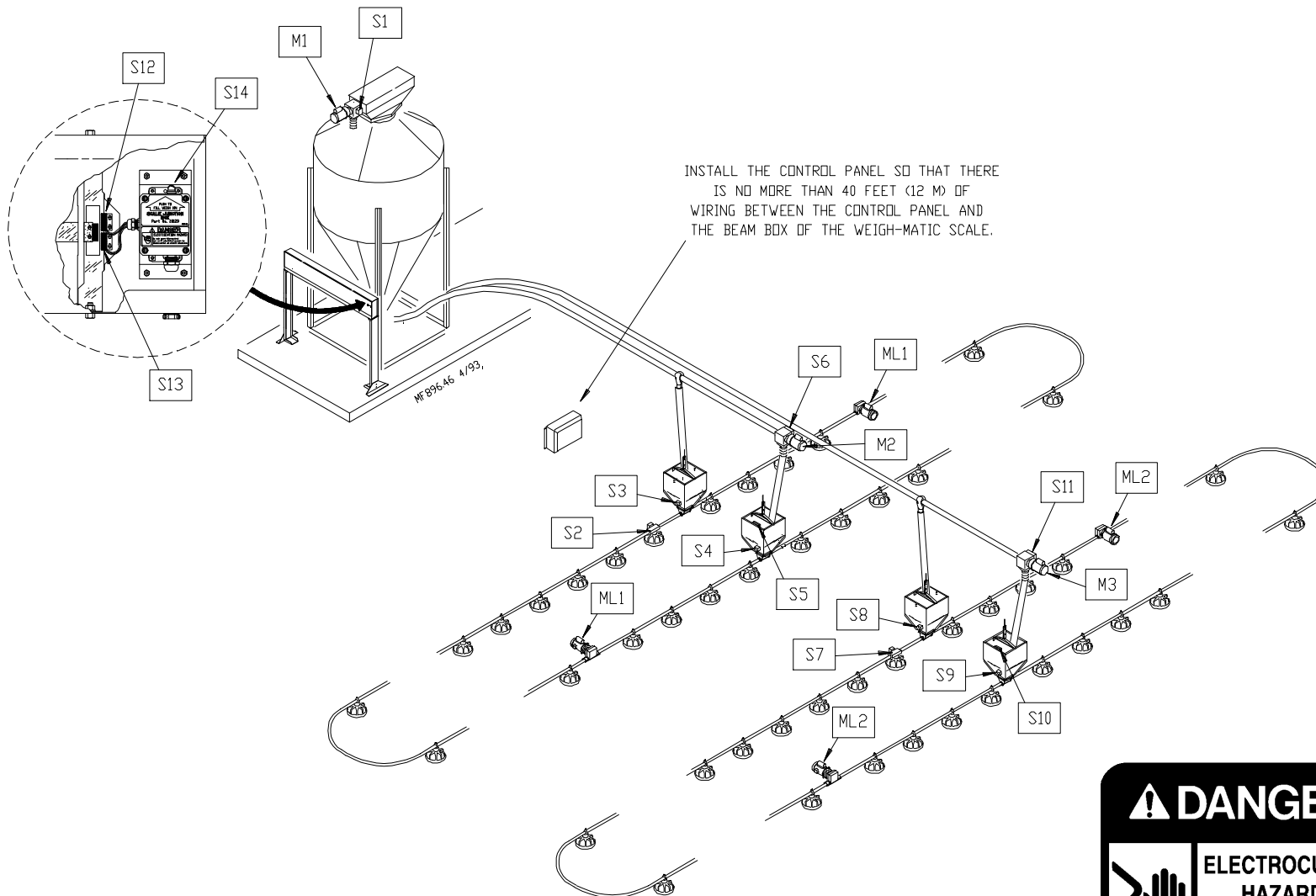
for ULTRAFLO Breeder Feeder Installations w/ Motor Starters
(230 V, 50/60 Hz, Single Phase)





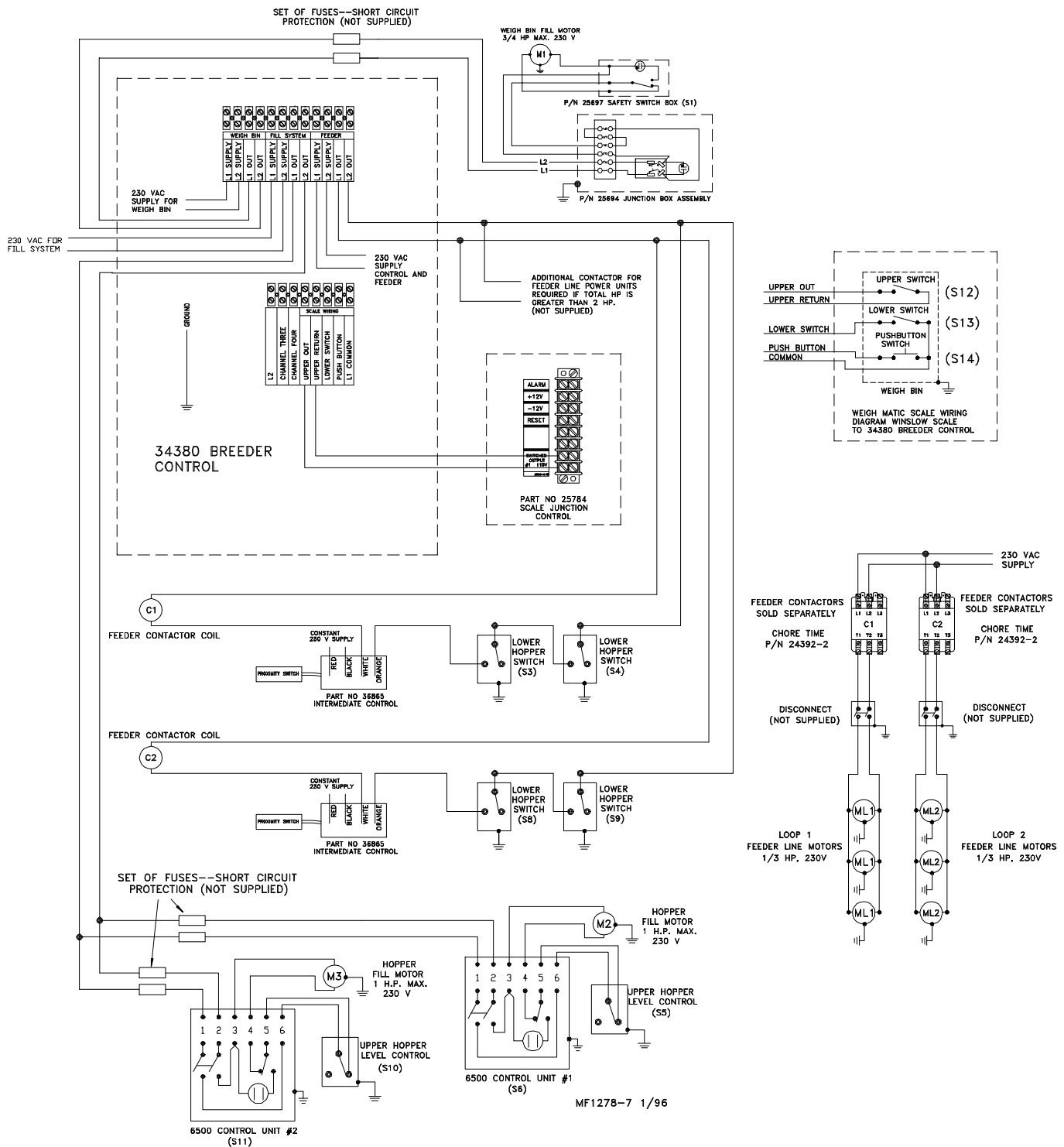
ULTRAPAN Component Location Diagram

Wire the system according to the applicable wiring diagram. Refer to this Component Layout Diagram to determine the motor, switch, etc. locations.



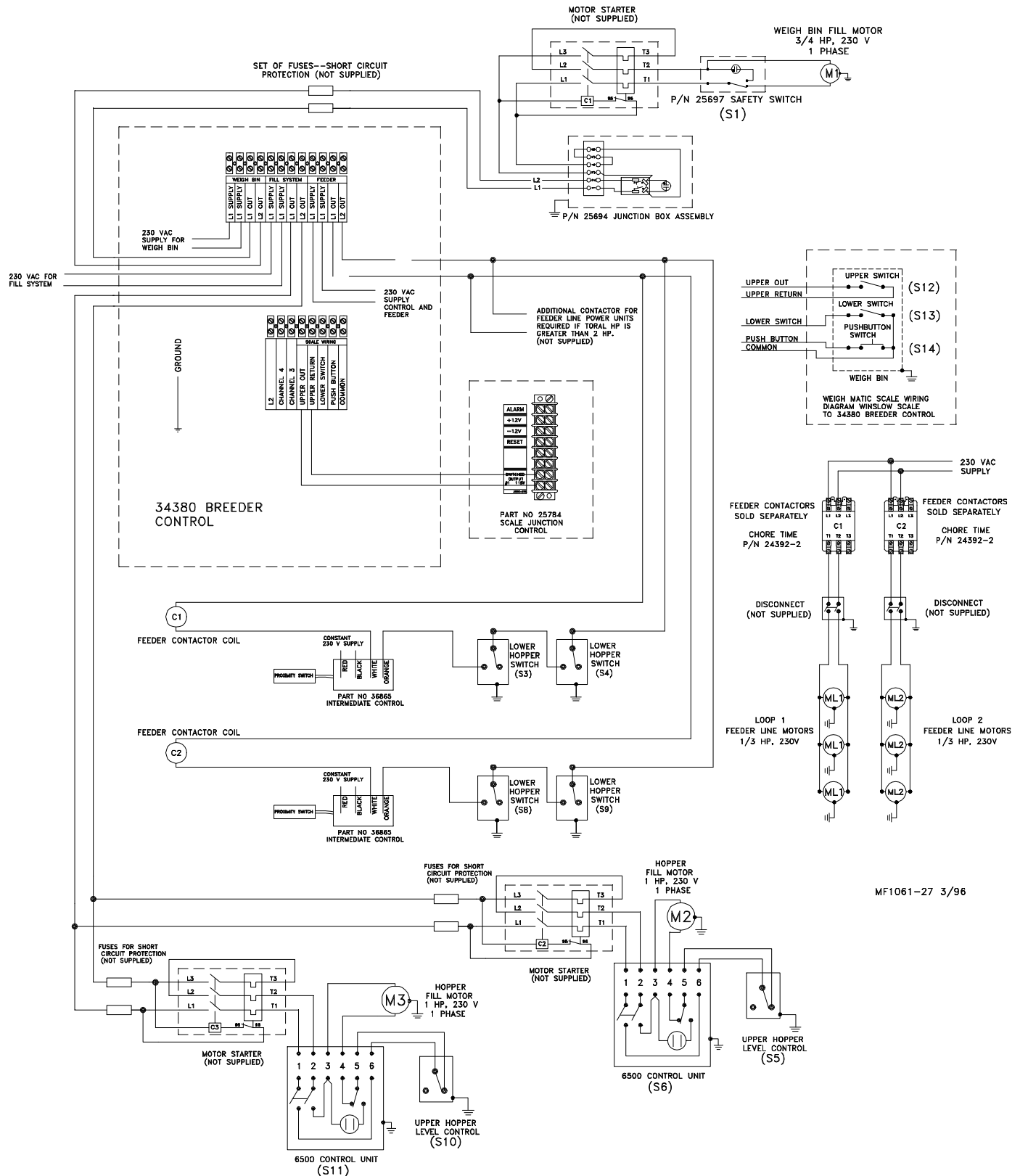
34380 Breeder Control Wiring Diagram

for ULTRAPAN Breeder Feeder Installations w/o Motor Starters
(230 V., 50/60 Hz., Single Phase)



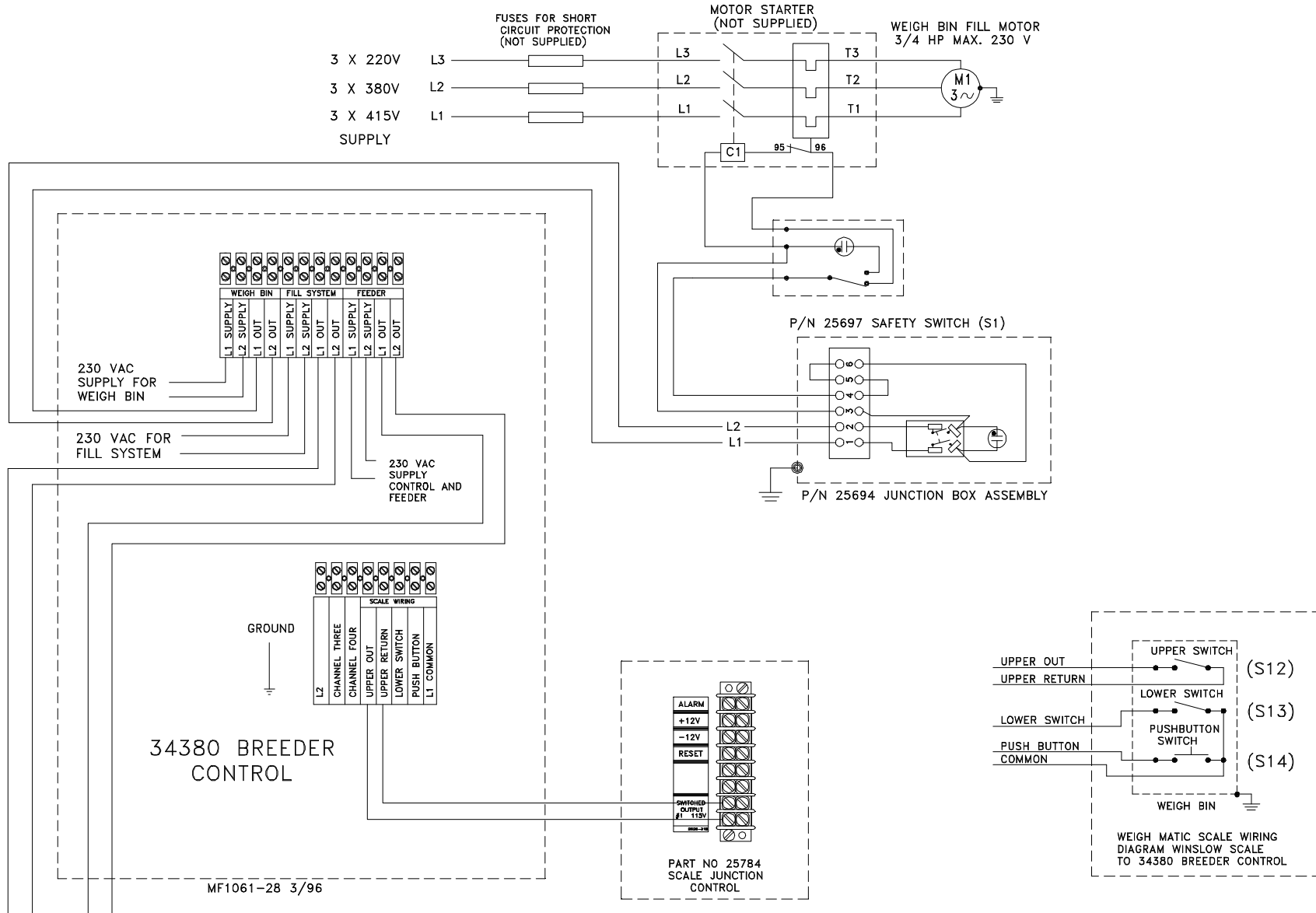
34380 Breeder Control Wiring Diagram

for ULTRAPAN Breeder Feeder Installations w/ Motor Starters
(230 V., 50/60 Hz., Single Phase)



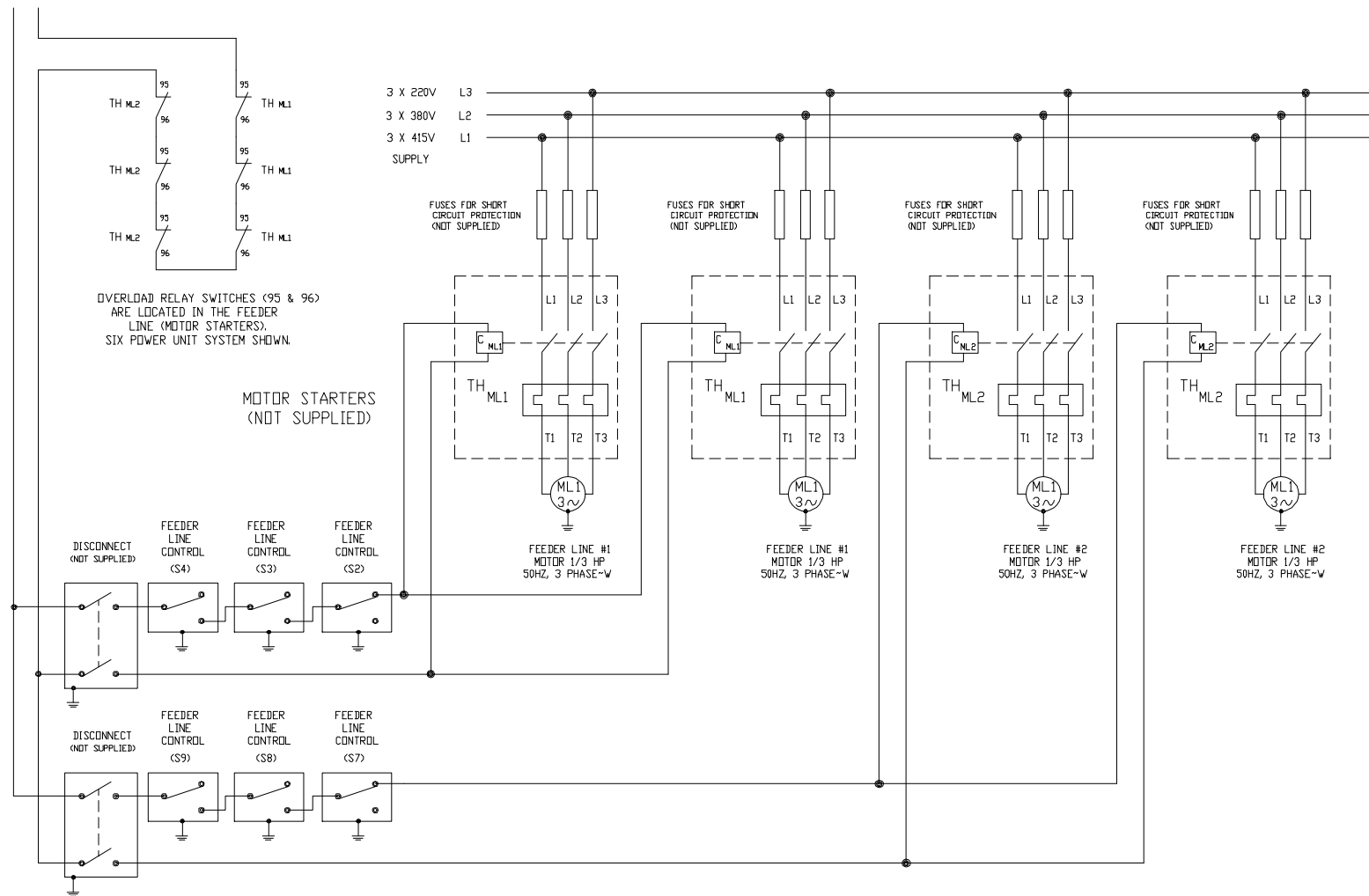
34380 Breeder Control Wiring Diagram

for ULTRAPAN Breeder Feeder Installations w/ Motor Starters
(220/380/415 V., 50/60 Hz., Three Phase)



Continue on page 17.

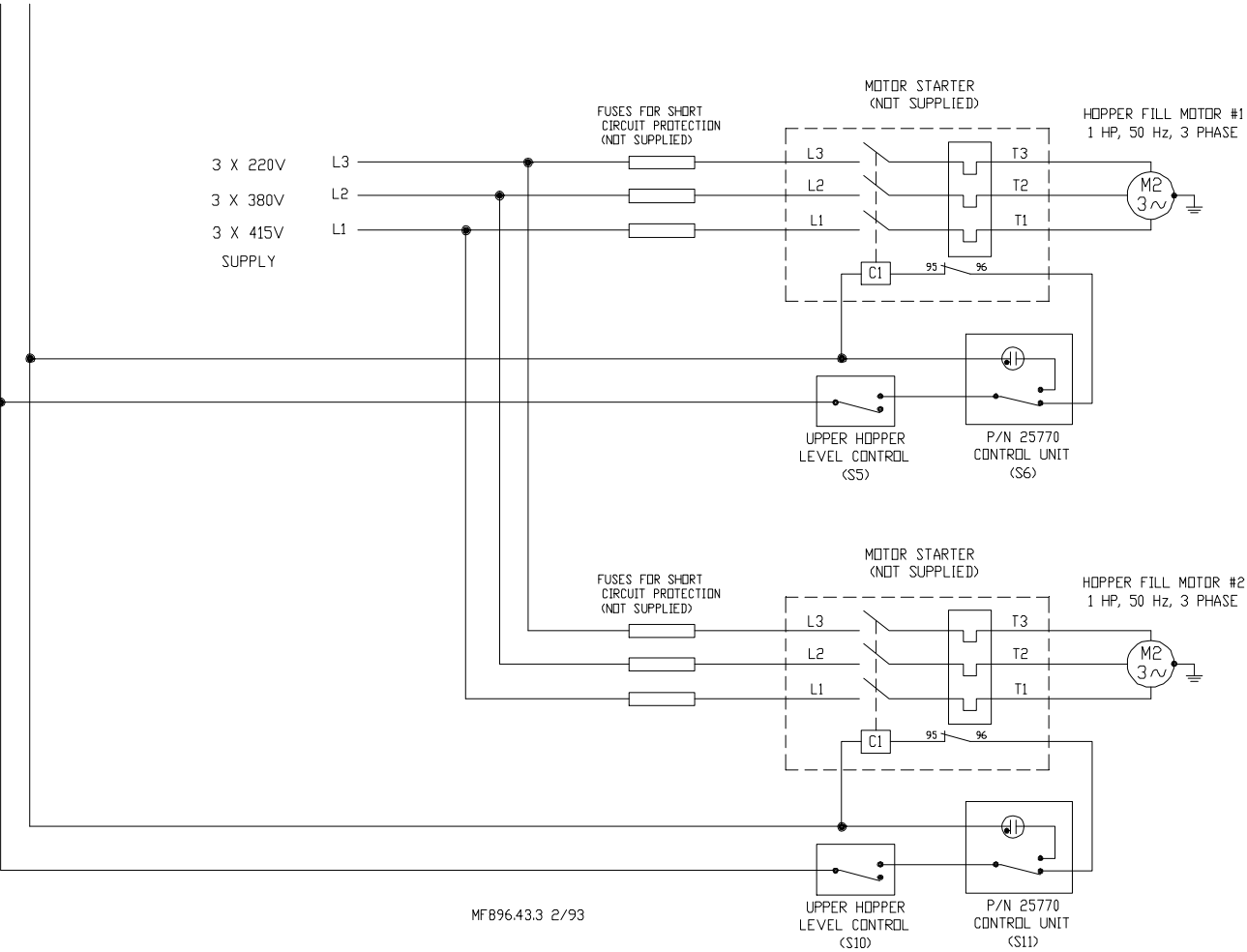
Continue from page 16.



MF896-76 1/95

Continue on page 18.

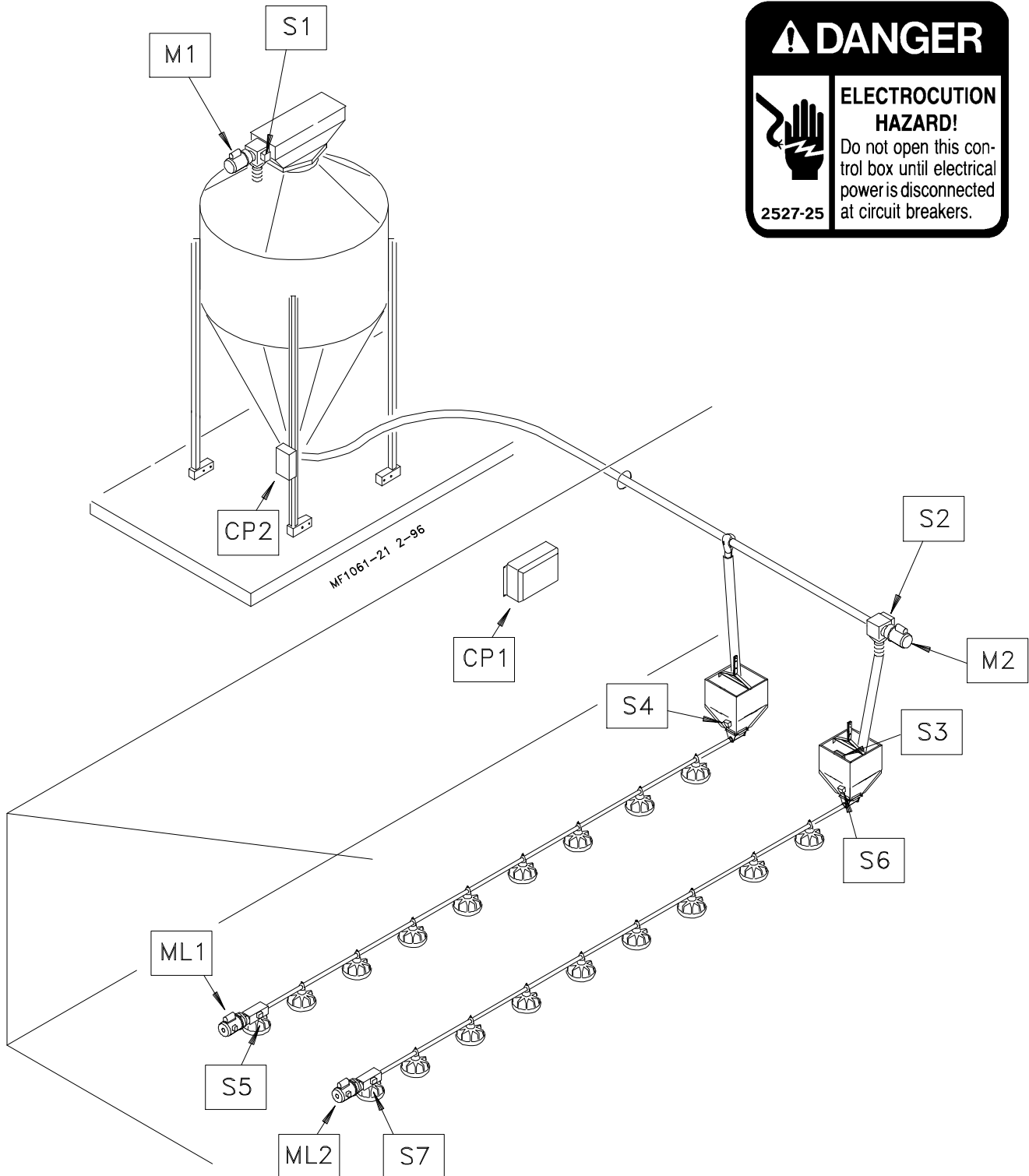
Continue from page 17.



MF896.43.3 2/93

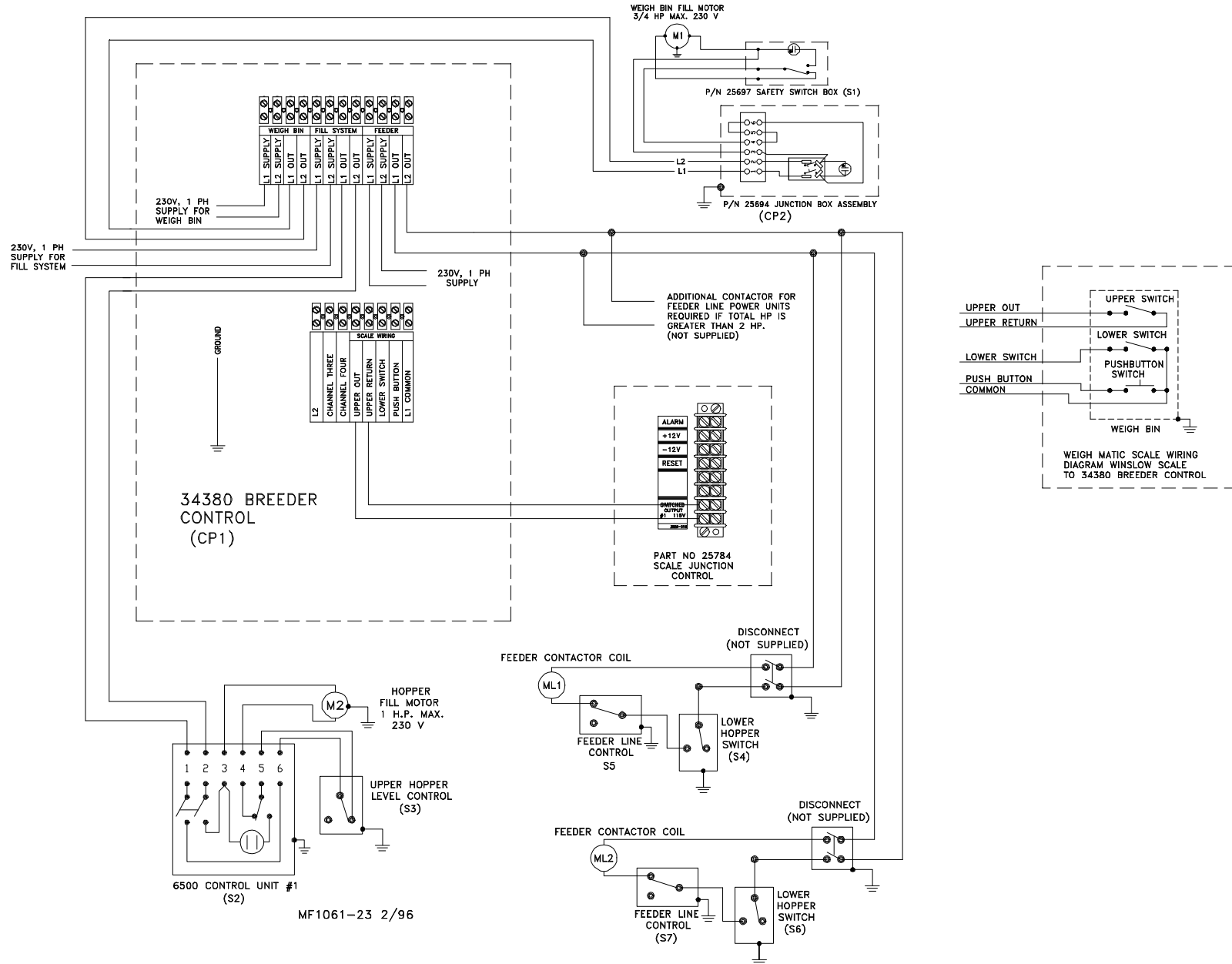
Pan Breeder Feeder Component Location Diagram

Wire the system according to the applicable wiring diagram. Refer to this Component Layout Diagram to determine the motor, switch, etc. locations.



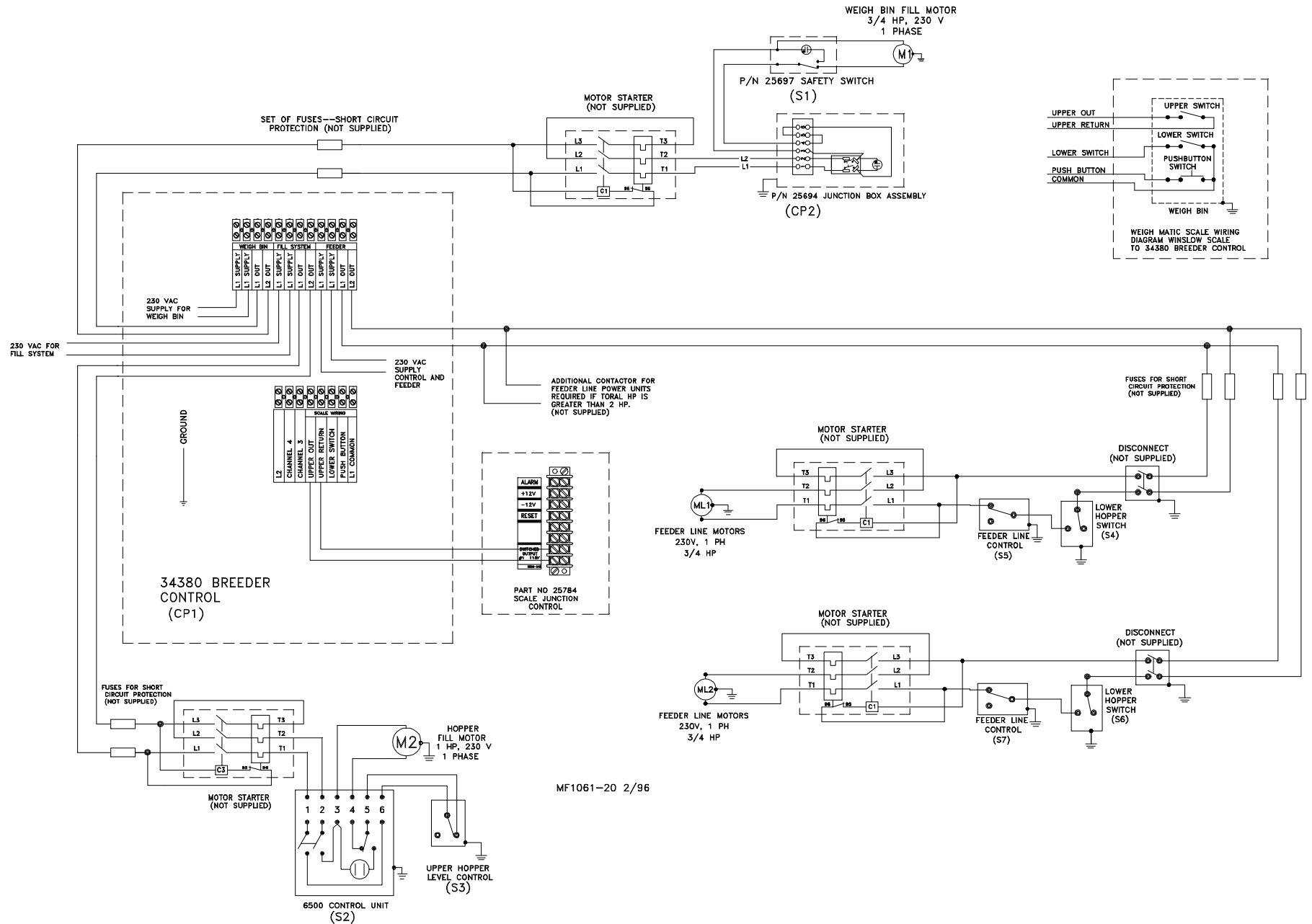
34380 Breeder Control Wiring Diagram

for Pan Breeder Feeder Installations w/o Motor Starters
(230 V., 50/60 Hz., Single Phase)



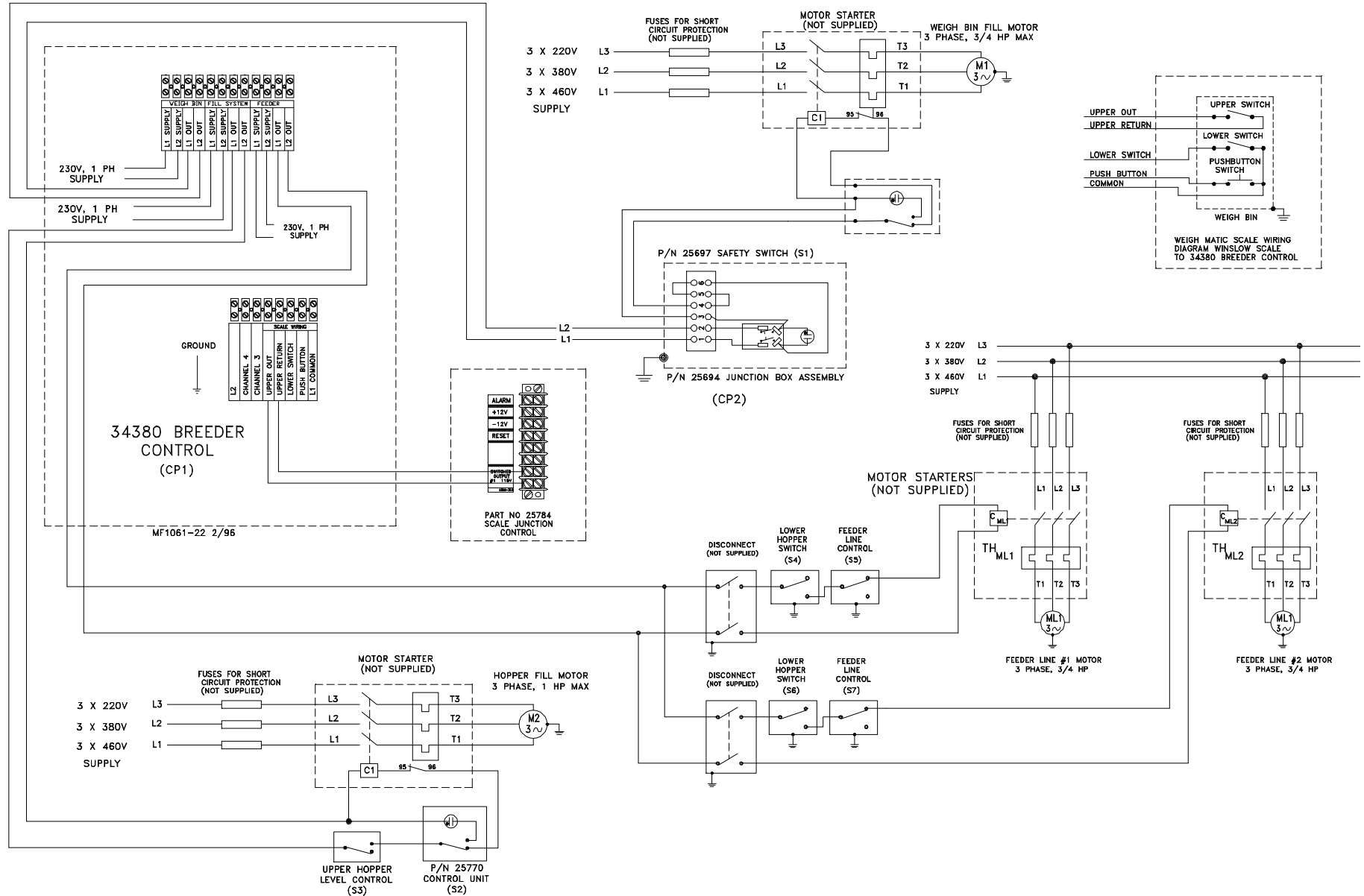
34380 Breeder Control Wiring Diagram

for Pan Breeder Feeder Installations w/ Motor Starters
(230 V., 50/60 Hz., Single Phase)



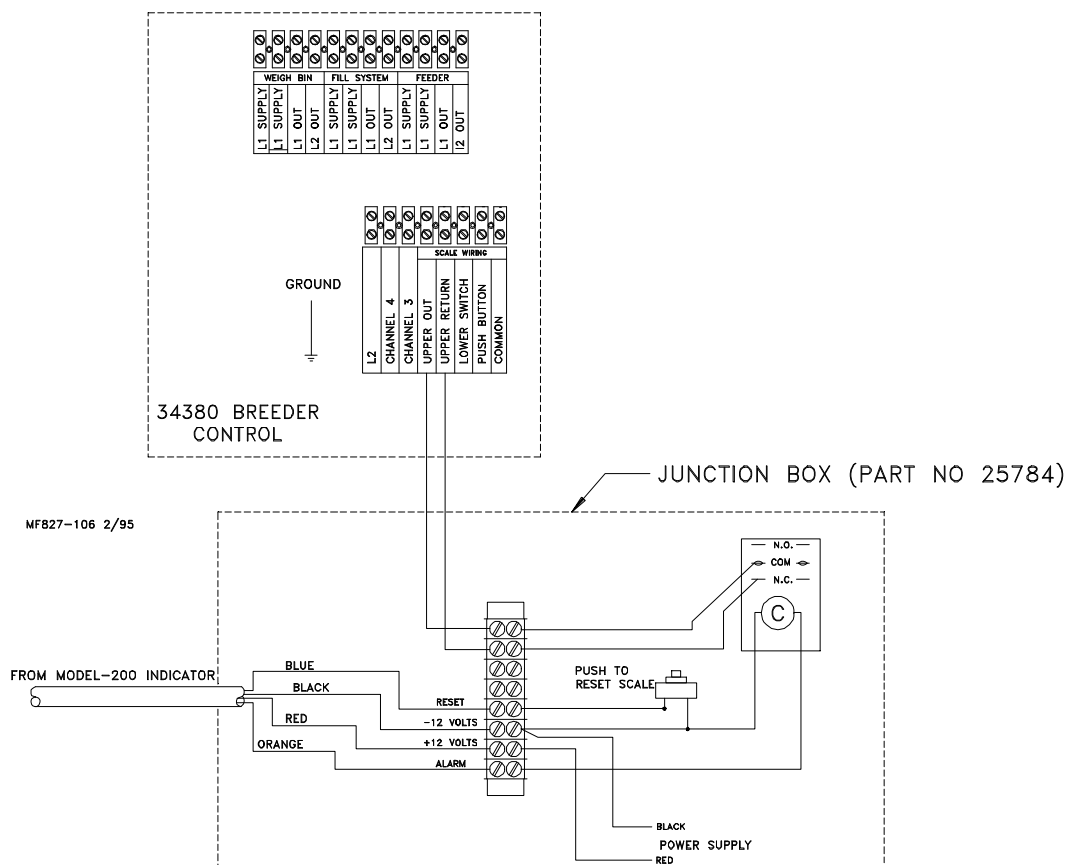
34380 Breeder Control Wiring Diagram

for Pan Breeder Feeder Installations w/ Motor Starters
(230/380/415 V., 50/60 Hz., Three Phase)



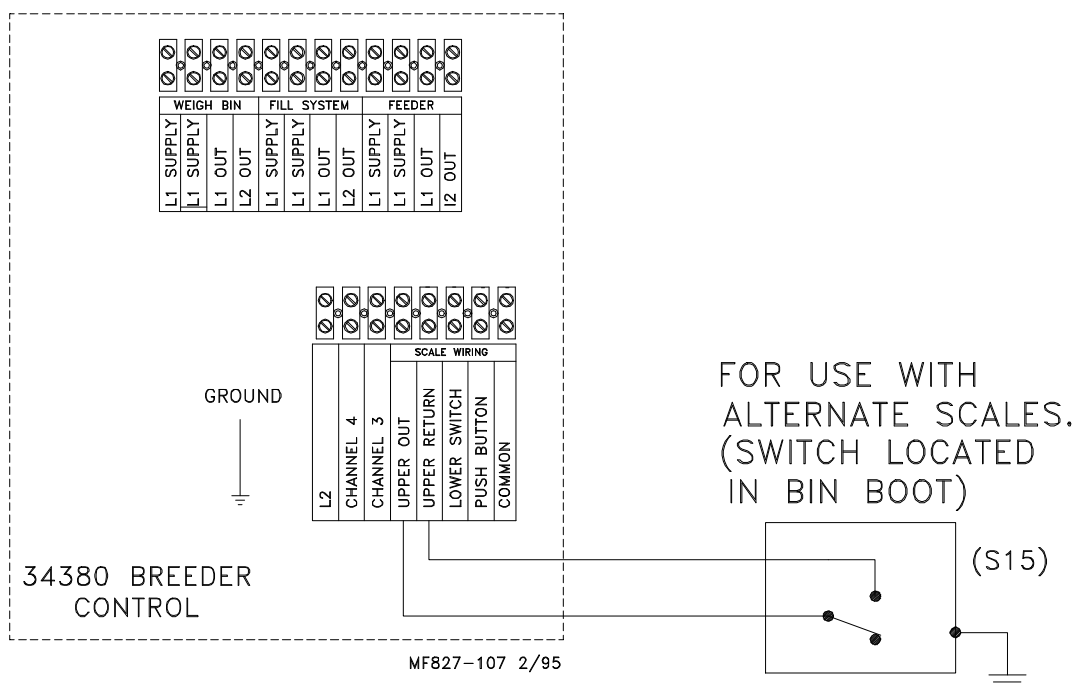
34380 Breeder Control Wiring Diagram

for installations using the Chore-Time Digital Weigh-Matic Scale



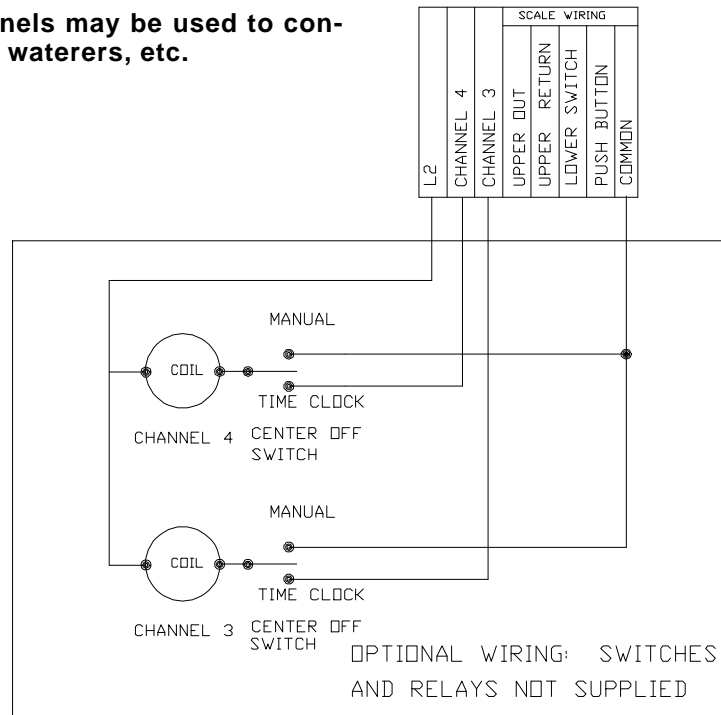
34380 Breeder Control Wiring Diagram

for installations using alternate scale systems



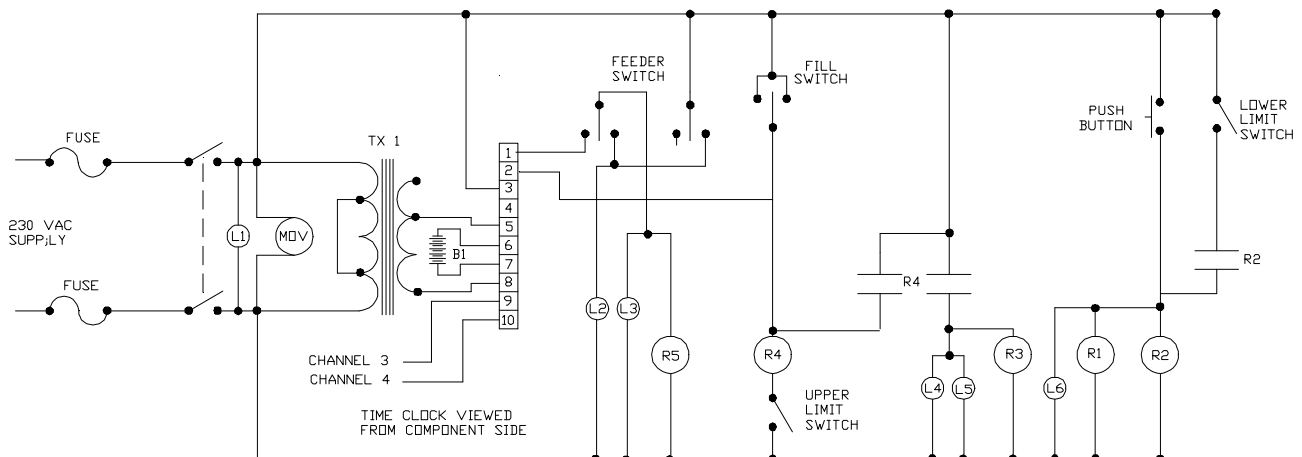
Additional Channel Wiring for Breeder Control

Additional channels may be used to control lights, fans, waterers, etc.



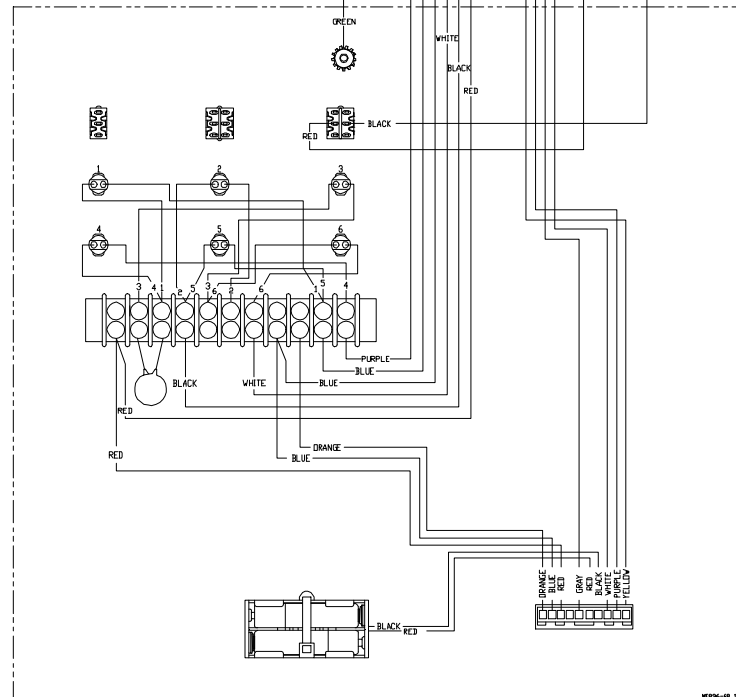
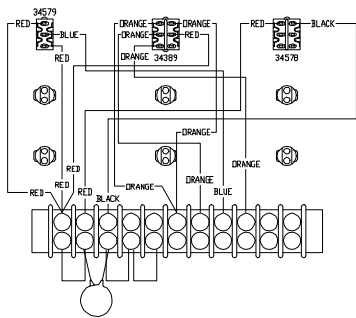
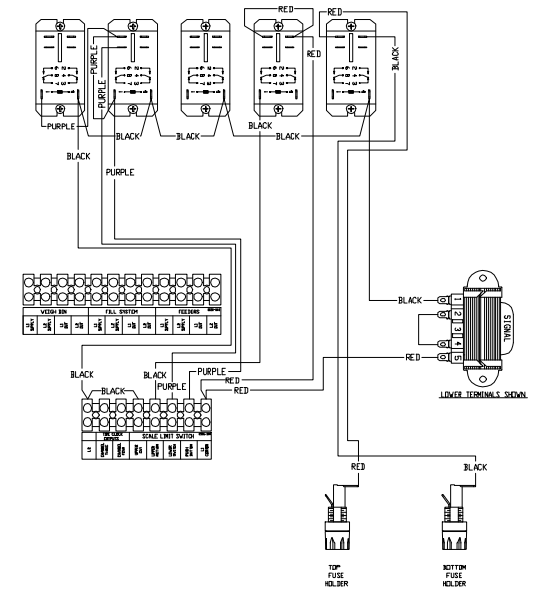
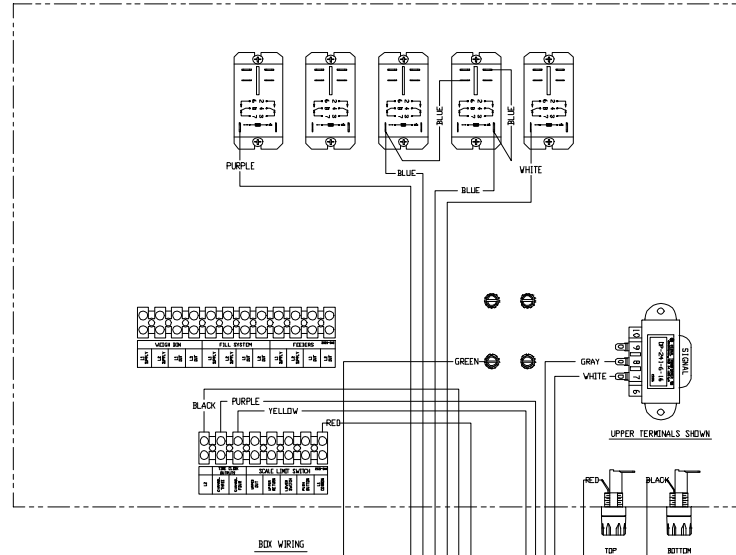
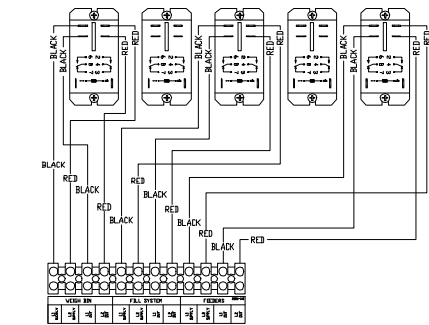
MF1061-7 5/95

Breeder Control Logic Wiring Diagram



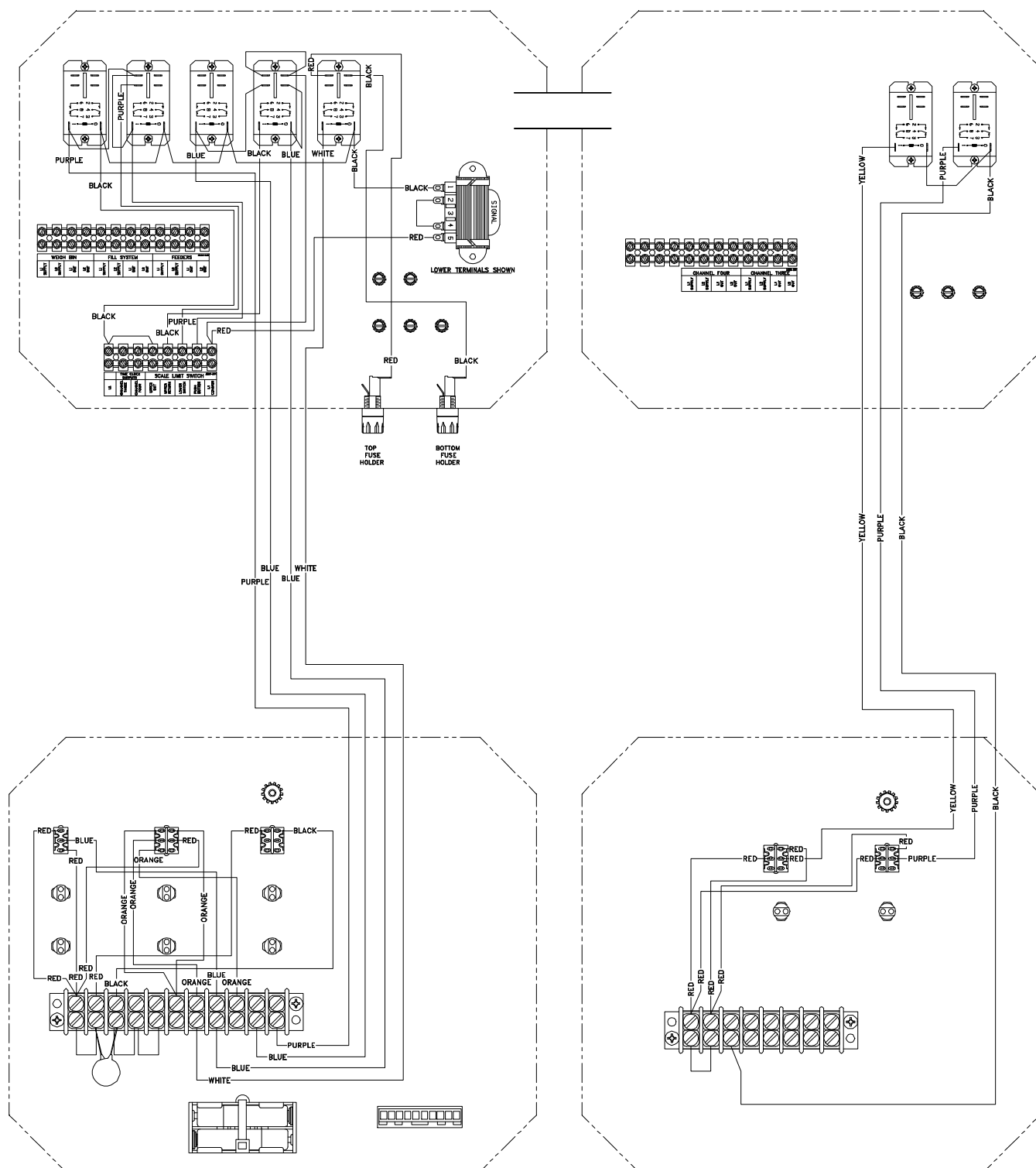
MF1061-5 11/94

Breeder Control (Part No. 34380) Internal Wiring Diagram



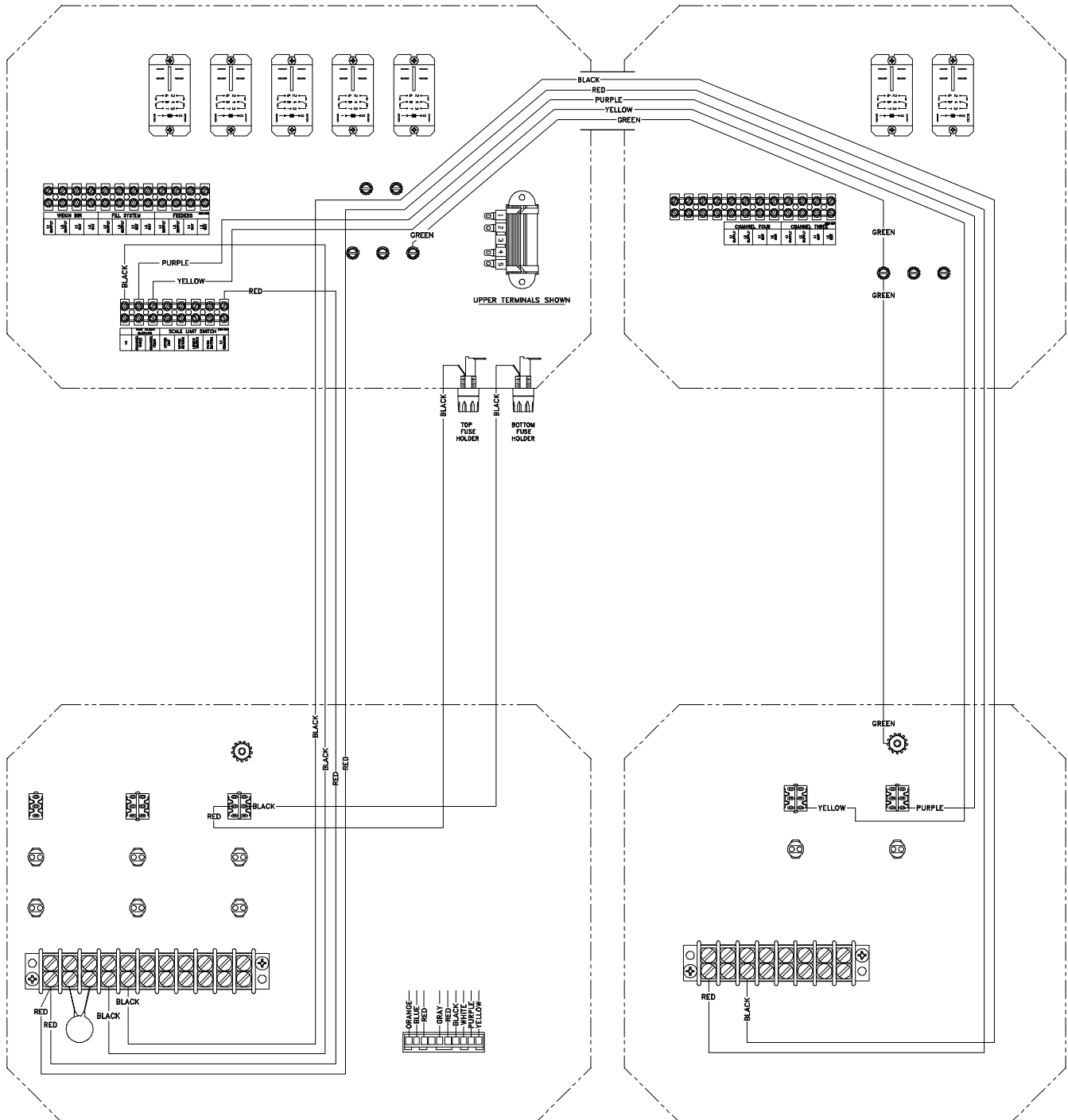
4-Channel Breeder Control (Part No. 36550) Internal Wiring Diagram

For clarity, this graphic shows only a portion of the internal wires. The other internal wires are shown on pages 27 and 28.



4-Channel Breeder Control Internal Wiring Diagram

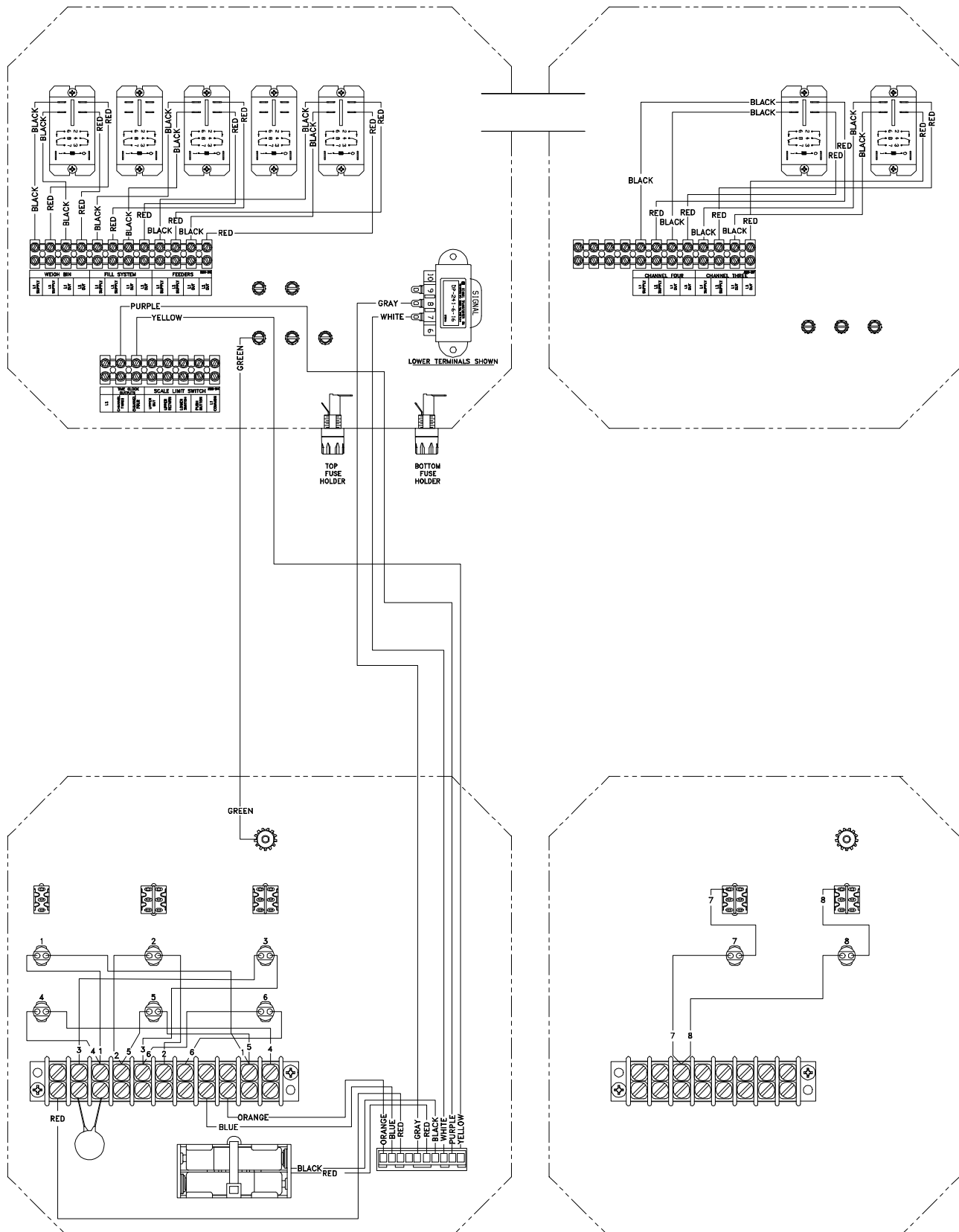
For clarity, this graphic shows only a portion of the internal wires. The other internal wires are shown on pages 26 and 28.



MF1061-32 3/96

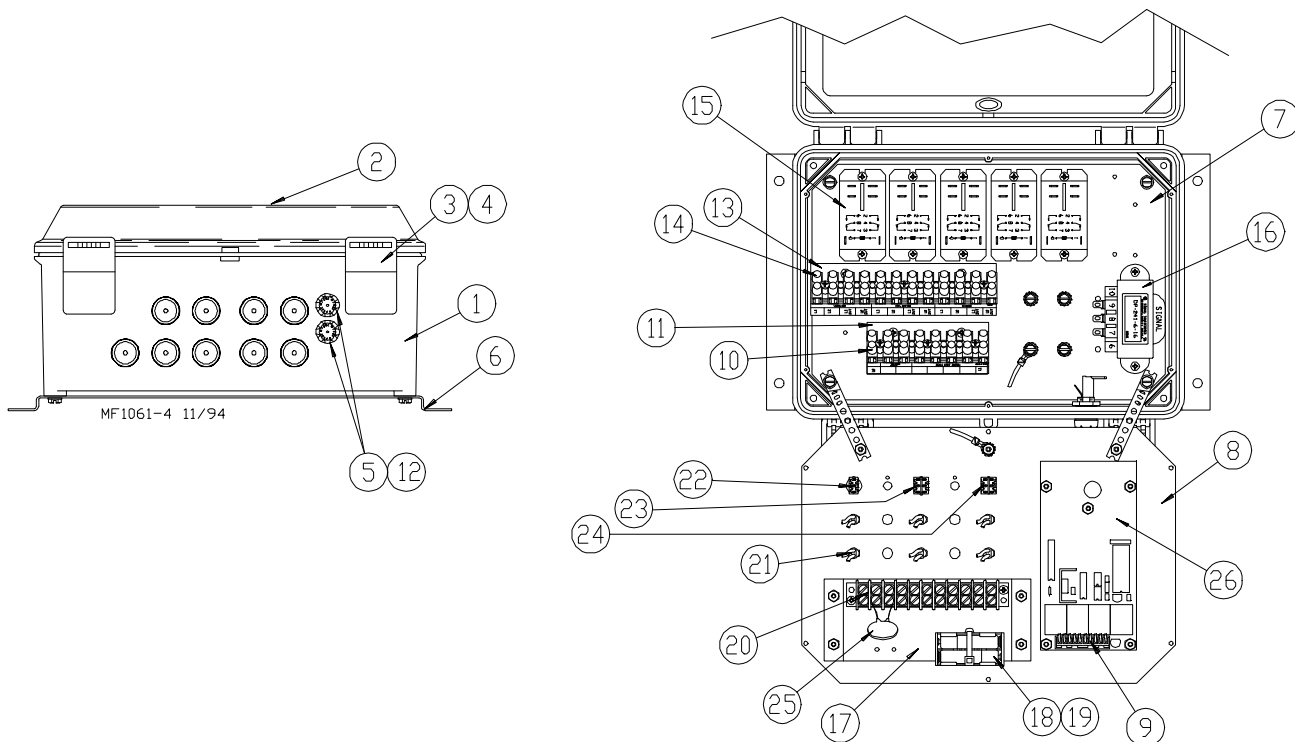
4-Channel Breeder Control Internal Wiring Diagram

For clarity, this graphic shows only a portion of the internal wires. The other internal wires are shown on pages 26 and 27.



Breeder Control Part List

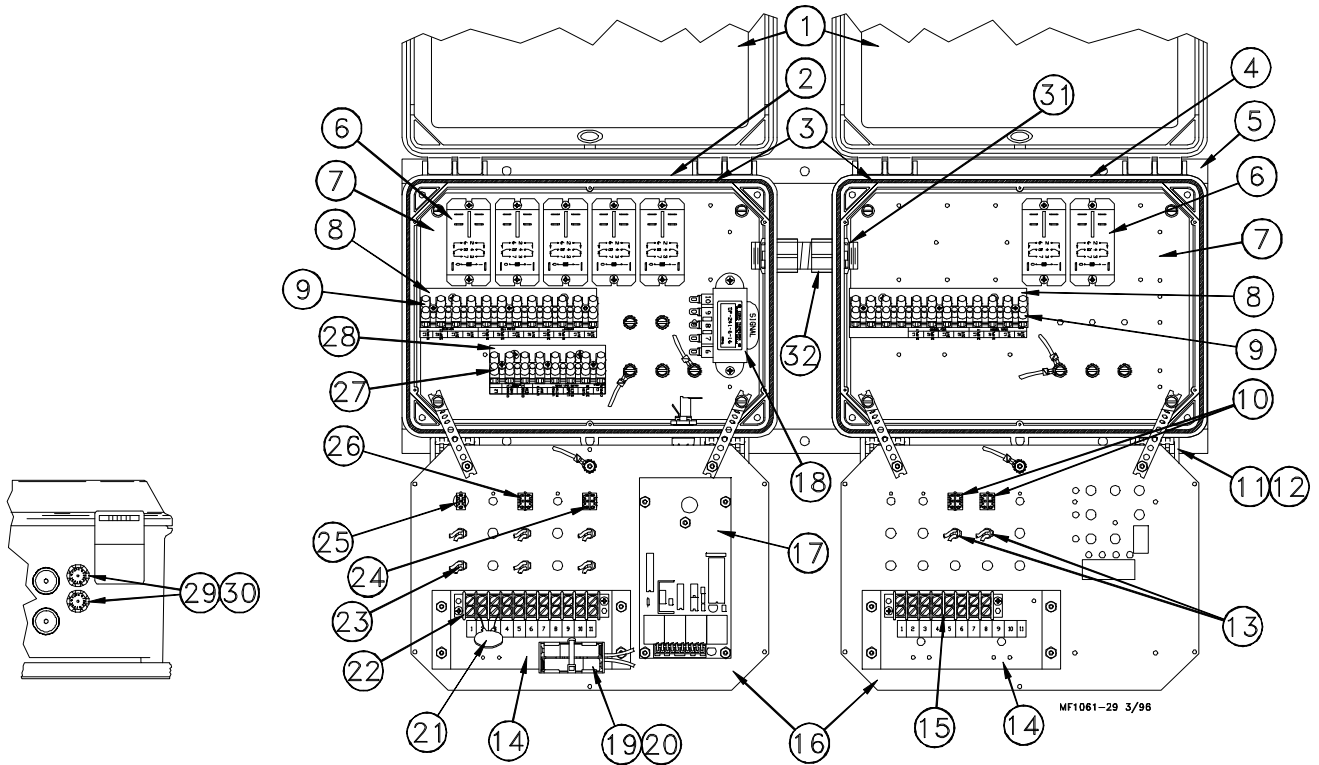
Part No. 34380



Item	Description	Part No.	Item	Description	Part No
1	Control Box	30860-4	14	Terminal Strip	34925
2	Clear Cover	30859-1	15	P & B Relay (240 V)	34733
3	Control Box Latch Pivot	30863	16	Transformer	34571
4	Control Box Latch	30862	17	Mount Bracket	34562
5	Fuse Holder	24431	18	Battery Box Assembly	35095
6	Control Box Mount Panel	34852	19	AAA Battery	34584
7	Back Mount Panel	34564	20	Terminal Block	7347
8	Front Panel	34565	21	Pilot Light	29708
9	Time Clock Connector	34457	22	Toggle Switch	34579
10	Terminal Strip	34925-8	23	Toggle Switch	34389
11	Terminal Mount Bracket	35094	24	Toggle Switch	34578
12	3 Amp Fuse (Slow Blow)	20472	25	MOV	14063-1
13	Terminal Mount Bracket	34563	26	Circuit Board	34384

4-Channel Breeder Control Part List

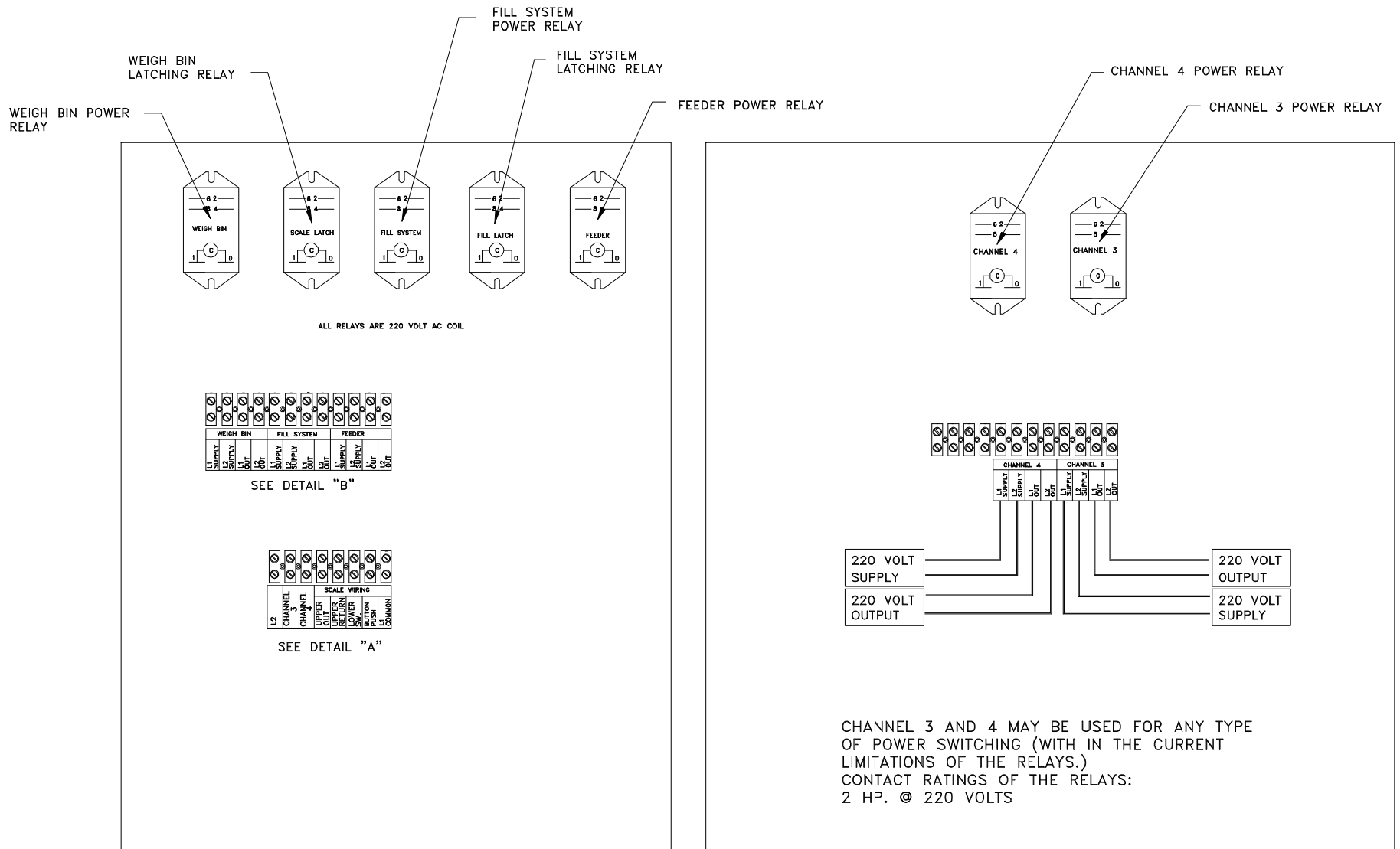
Part No. 36550



Item	Description	Part No.	Item	Description	Part No
1	Clear Lid	30859-1	17	Circuit Board	34384
2	4-Channel Breeder Control Box	36551	18	115/230 V Dual Transformer	34571
3	Neoprene Seal	34767	19	Battery Box Assembly	35095
4	4-Channel Breeder Control Box	36552	20	"AAA" Battery	34584
5	4-Channel Breeder Control Mount	36553	21	MOV	14063-1
6	Relay (240 VAC)	34733	22	Terminal Bock	7347
7	Back Mount Panel	34564	23	Pilot Light	29708
8	Terminal Mount Bracket	34563	24	Toggle Switch	34578
9	Terminal Strip	34925	25	Toggle Switch	34579
10	Toggle Switch	34388	26	Toggle Switch	34389
11	Control Box Latch Pivot	30863	27	Terminal Strip	34925-8
12	Control Box Latch	30862	28	Terminal Mount Bracket	35094
13	Pilot Light Assembly	35461	29	3 Amp Fuse (Slow Blow)	20472
14	Mount Bracket	34562	30	Fuse Holder	24431
15	Terminal Block	7270	31	Conduit Lock Nut	3357
16	Front Panel	34565	32	Conduit Assembly	36554

Trouble Shooting Guide

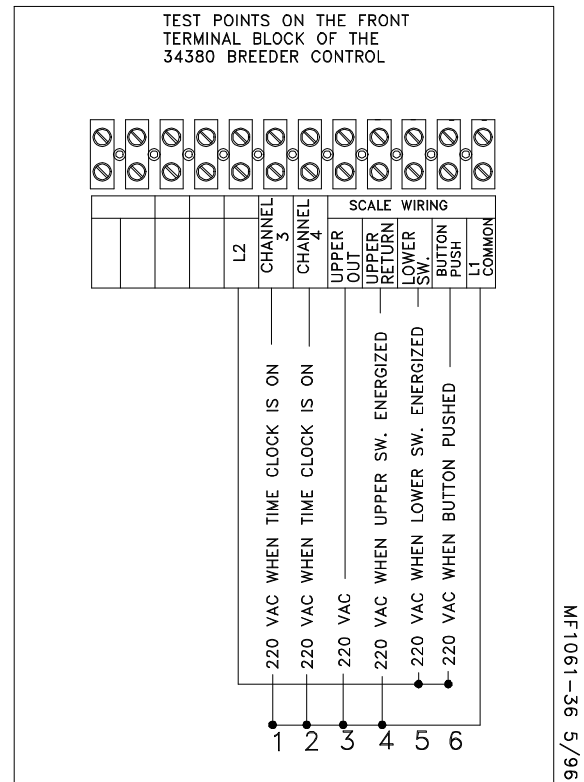
Problem or Symptom	Possible Cause and/or Correct Action
Control dead--No lights	Check fuses. See page 5. Check MOV. Check incoming power supply.
Clock loses time of day during power outage	Replace the two "AAA" batteries.
Time Clock does not operate correctly. No start and stop time. No "every-other-day" function.	Replace the Time Clock Circuit Board.
Weigh Bin starts when the push button in the Beam Box is pressed but does not continue to run when button is released. Note: Refer to the Weigh Bin Scale Manual for additional information.	See reference wiring diagrams on pages 32 through 33 (particularly Detail A). Check the Lower Switch in the Beam Box. Check adjustment of the Lower Switch to magnet. Check the resistors in the white box located in the Beam Box. Check the wiring from the Beam Box to the Breeder Control Check the Weigh Bin latching relay in the Breeder Control.
With the Beam up, the fill system starts but does not hold in when the switch is released. Both manual and Time Clock. Note: Refer to the Weigh Bin Scale Manual for additional information.	Check the Upper Limit Switch in the Beam Box. Check the adjustment of the switch and the magnet. Check the resistors in the white box located in the Beam Box. Check the wiring from the Beam Box to the Breeder Control. Check the Fill System latching relay in the Breeder Control.
Feeders will not run from the Time Clock.	Check location of the Manual/Time Clock Switch (switch must be in the Time Clock position). Check the operation of the Feeder Power Relay. Check the power on the Feeder Power Relay.
Fill Power Relay pulls in, but fill system does not operate.	See reference wiring diagrams on pages 32 through 33 (particularly Detail B). Check the power applied to the Fill System Power Relay. Check the output power from the Fill System Power Relay.
Weigh Bin Power Relay Pulls in, but Scale Fill System will not operate.	See reference wiring diagrams on pages 32 through 33 (particularly Detail B). Check the power applied to the Weigh Bin Fill System Power Relay.



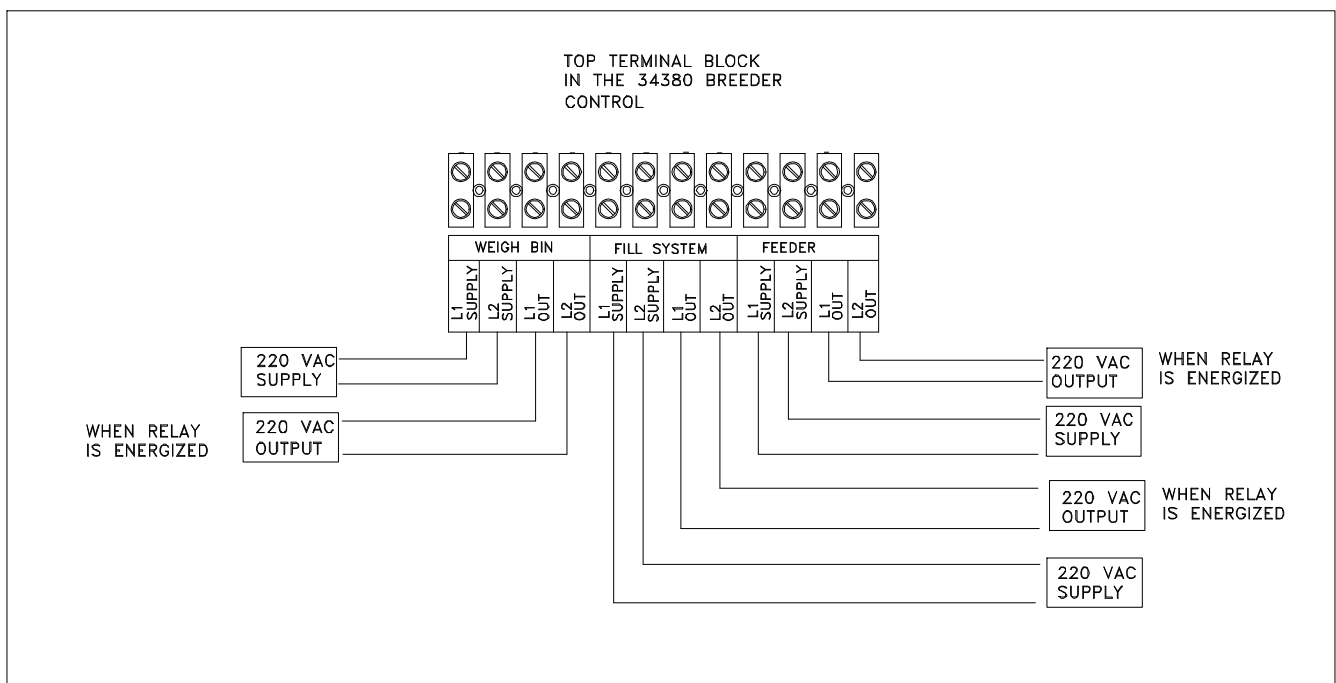
MF1061-35 5/96

36550 FOUR CHANNEL BREEDER CONTROL

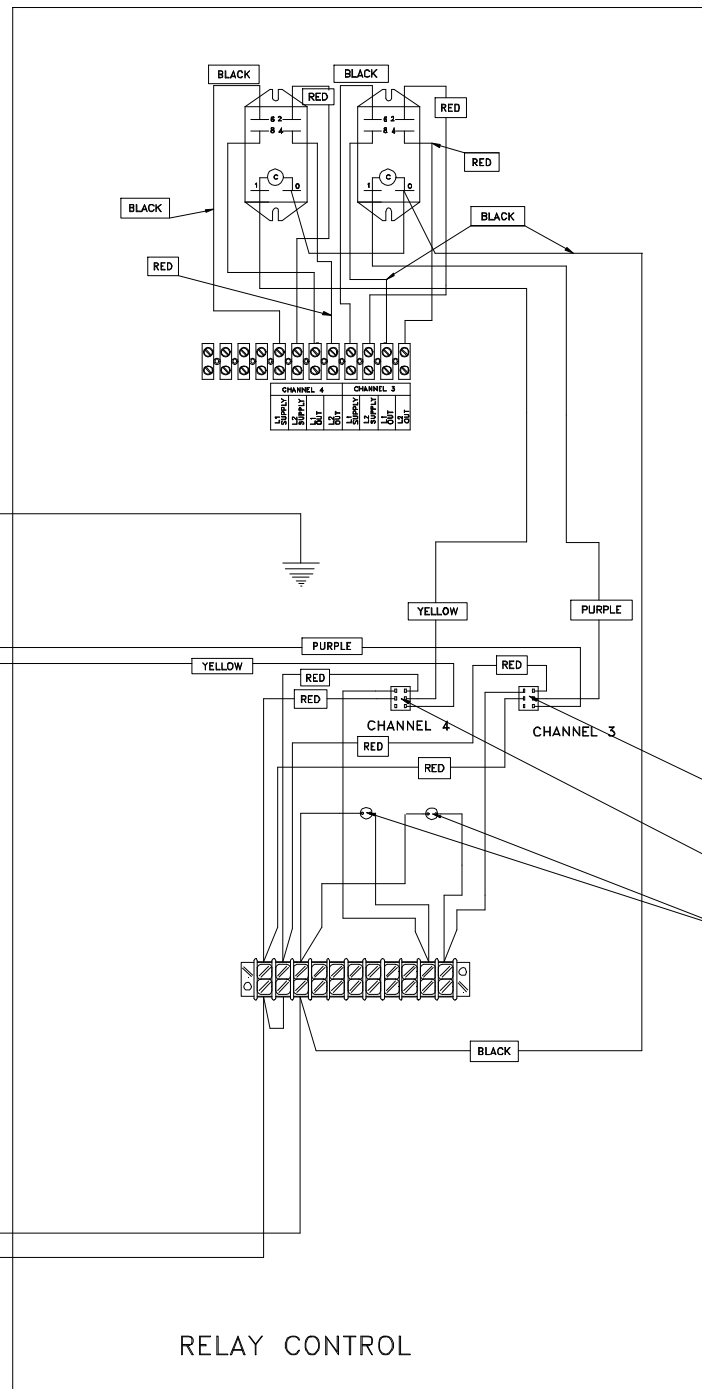
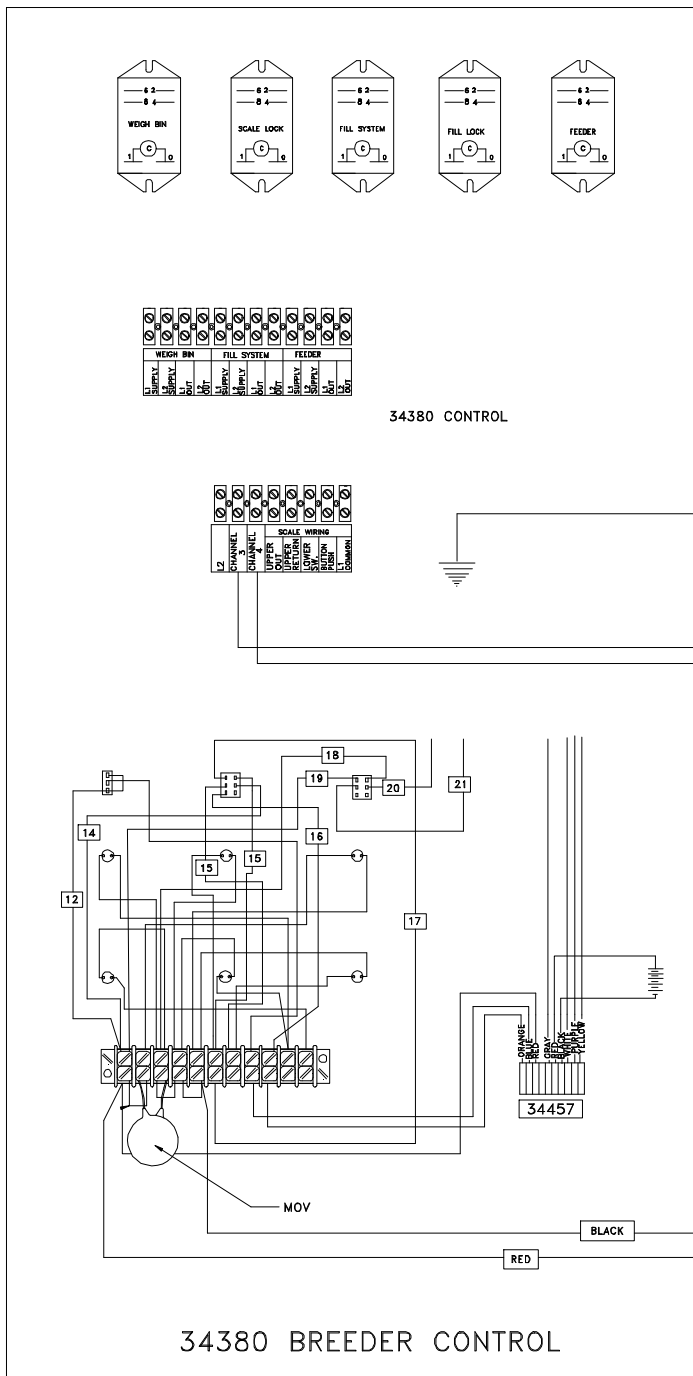
The Detail Diagrams on this page are referenced on the master drawing on page 32.



DETAIL "A"



DETAIL "B"





Made to work.
Built to last.

Revisions to this Manual

Page No	Description of Change
--	Added Pan Breeder Feeder System Wiring Diagrams
--	Added Trouble Shooting Guide
--	Added 4-Channel Breeder Control Information

Contact your nearby Chore-Time distributor or representative for additional parts and information.
Chore-Time Equipment, A Division of CTB, Inc.
P.O. Box 2000, Milford, Indiana 46542-2000 U.S.A.

Printed in the U.S.A.