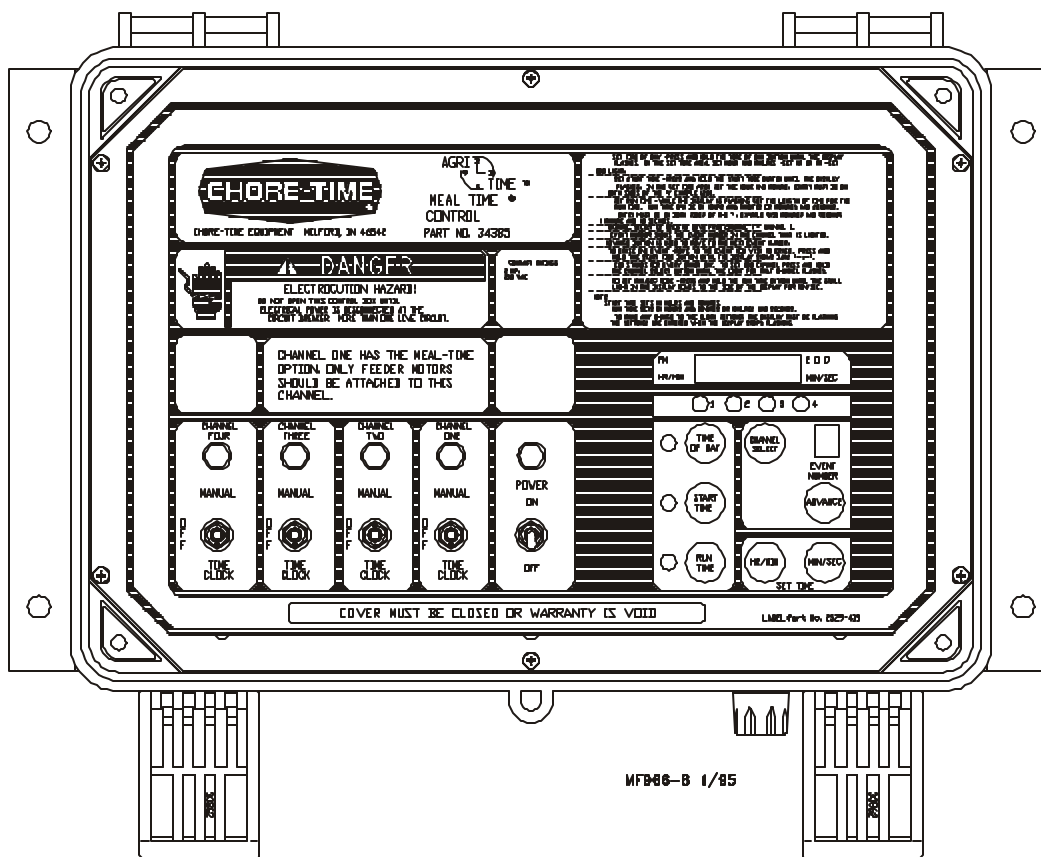




Poultry Production Systems

AGRI-TIME™ DIGITAL TIME CLOCK

used with the
34385 Meal-Time Control Panel

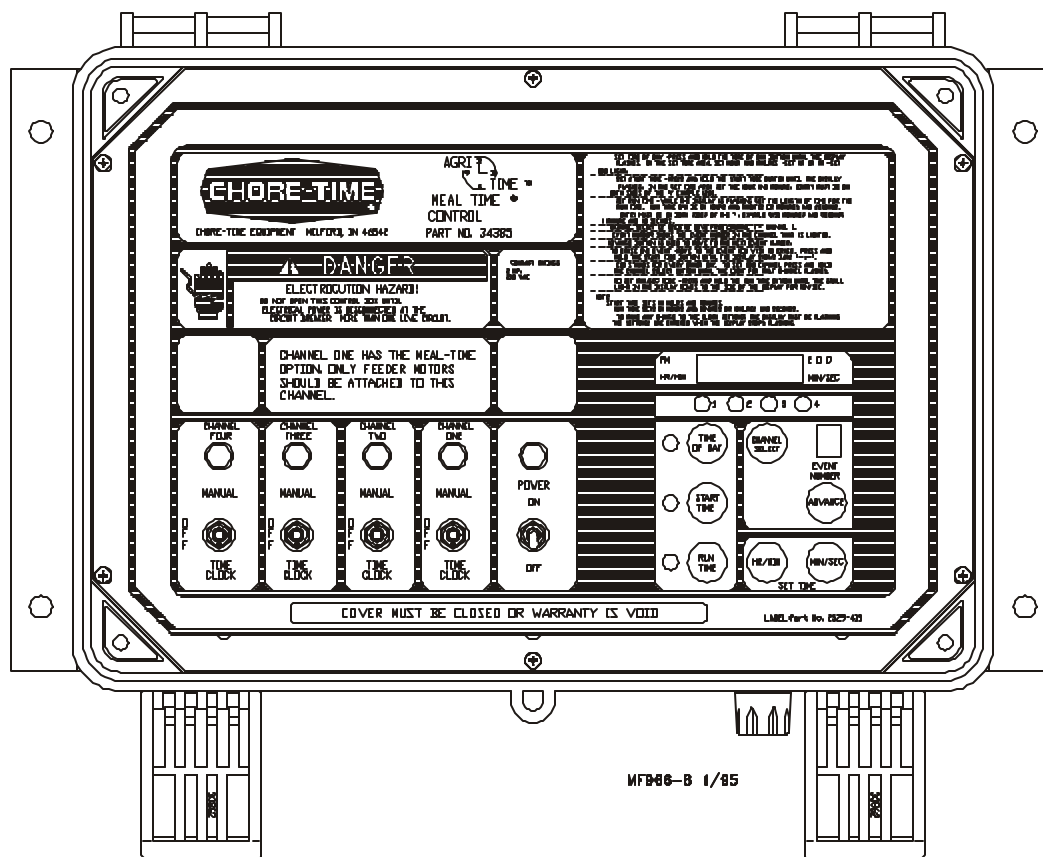




Poultry Production Systems

AGRI-TIME™ DIGITAL TIME CLOCK

used with the
34385 Meal-Time Control Panel



MF1116B 1/85

Warranty Information

Chore-Time Equipment, a division of CTB, Inc., ("Chore-Time") warrants each new CHORE-TIME® product manufactured by it to be free from defects in material or workmanship for one year from and after the date of initial installation by or for the original purchaser. If such a defect is found by the Manufacturer to exist within the one-year period, the Manufacturer will, at its option, (a) repair or replace such product free of charge, F.O.B. the factory of manufacture, or (b) refund to the original purchaser the original purchase price, in lieu of such repair or replacement. Labor costs associated with the replacement or repair of the product are not covered by the Manufacturer.

CONDITIONS AND LIMITATIONS

1. The product must be installed by and operated in accordance with the instructions published by the Manufacturer or Warranty will be void.
2. Warranty is void if all components of the system are not original equipment supplied by the Manufacturer.
3. This product must be purchased from and installed by an authorized distributor or certified representative thereof or the Warranty will be void.
4. Malfunctions or failure resulting from misuse, abuse, negligence, alteration, accident, or lack of proper maintenance shall not be considered defects under the Warranty.
5. This Warranty applies only to systems for the care of poultry and livestock. Other applications in industry or commerce are not covered by this Warranty.

The Manufacturer shall not be liable for any consequential or special damage which any purchaser may suffer or claim to suffer as a result of any defect in the product. "Consequential" or special damages" as used herein include, but are not limited to, lost or damaged products or goods, costs of transportation, lost sales, lost orders, lost income, increased overhead, labor and incidental costs and operational inefficiencies.

THIS WARRANTY CONSTITUTES THE MANUFACTURER'S ENTIRE AND SOLE WARRANTY AND THIS MANUFACTURER EXPRESSLY DISCLAIMS ANY AND ALL OTHER WARRANTIES, INCLUDING, BUT NOT LIMITED TO, EXPRESS AND IMPLIED WARRANTIES AS TO MERCHANTABILITY, FITNESS FOR PARTICULAR PURPOSES SOLD AND DESCRIPTION OR QUALITY OF THE PRODUCT FURNISHED HEREUNDER.

Chore-Time Distributors are not authorized to modify or extend the terms and conditions of this Warranty in any manner or to offer or grant any other warranties for Chore-Time products in addition to those terms expressly stated above.

An officer of CTB, Inc. must authorize any exceptions to this Warranty in writing. The Manufacturer reserves the right to change models and specifications at any time without notice or obligation to improve previous models.

Effective 01/2002

Chore-Time Equipment
A Division of CTB, Inc.
P.O. Box 2000 * Milford, Indiana 46542-2000 * U.S.A.
Phone (574) 658-4101 * Fax (574) 658-4171
Email: poultry@choretime.com * Internet: <http://www.choretime.com>

Thank You

The employees of Chore-Time Equipment would like to thank you for your recent Chore-Time purchase. If a problem should arise, your Chore-Time distributor can supply the necessary information to help you.

Warranty Information

Chore-Time Equipment, a division of CTB, Inc., ("Chore-Time") warrants each new CHORE-TIME® product manufactured by it to be free from defects in material or workmanship for one year from and after the date of initial installation by or for the original purchaser. If such a defect is found by the Manufacturer to exist within the one-year period, the Manufacturer will, at its option, (a) repair or replace such product free of charge, F.O.B. the factory of manufacture, or (b) refund to the original purchaser the original purchase price, in lieu of such repair or replacement. Labor costs associated with the replacement or repair of the product are not covered by the Manufacturer.

CONDITIONS AND LIMITATIONS

1. The product must be installed by and operated in accordance with the instructions published by the Manufacturer or Warranty will be void.
2. Warranty is void if all components of the system are not original equipment supplied by the Manufacturer.
3. This product must be purchased from and installed by an authorized distributor or certified representative thereof or the Warranty will be void.
4. Malfunctions or failure resulting from misuse, abuse, negligence, alteration, accident, or lack of proper maintenance shall not be considered defects under the Warranty.
5. This Warranty applies only to systems for the care of poultry and livestock. Other applications in industry or commerce are not covered by this Warranty.

The Manufacturer shall not be liable for any consequential or special damage which any purchaser may suffer or claim to suffer as a result of any defect in the product. "Consequential" or special damages" as used herein include, but are not limited to, lost or damaged products or goods, costs of transportation, lost sales, lost orders, lost income, increased overhead, labor and incidental costs and operational inefficiencies.

THIS WARRANTY CONSTITUTES THE MANUFACTURER'S ENTIRE AND SOLE WARRANTY AND THIS MANUFACTURER EXPRESSLY DISCLAIMS ANY AND ALL OTHER WARRANTIES, INCLUDING, BUT NOT LIMITED TO, EXPRESS AND IMPLIED WARRANTIES AS TO MERCHANTABILITY, FITNESS FOR PARTICULAR PURPOSES SOLD AND DESCRIPTION OR QUALITY OF THE PRODUCT FURNISHED HEREUNDER.

Chore-Time Distributors are not authorized to modify or extend the terms and conditions of this Warranty in any manner or to offer or grant any other warranties for Chore-Time products in addition to those terms expressly stated above.

An officer of CTB, Inc. must authorize any exceptions to this Warranty in writing. The Manufacturer reserves the right to change models and specifications at any time without notice or obligation to improve previous models.

Effective 01/2002

Chore-Time Equipment
A Division of CTB, Inc.
P.O. Box 2000 * Milford, Indiana 46542-2000 * U.S.A.
Phone (574) 658-4101 * Fax (574) 658-4171
Email: poultry@choretime.com * Internet: <http://www.choretime.com>

Thank You

The employees of Chore-Time Equipment would like to thank you for your recent Chore-Time purchase. If a problem should arise, your Chore-Time distributor can supply the necessary information to help you.

SAFETY INFORMATION

Caution, Warning and Danger Decals have been placed on the equipment to warn of potentially dangerous situations. Care should be taken to keep this information intact and easy to read at all times. Replace missing or damaged safety signs.

Using the equipment for purposes other than specified in this manual may cause personal injury or damage to the equipment.

Safety–Alert Symbol

This is a safety–alert symbol. When you see this symbol on your equipment, be alert to the potential for personal injury. Chore-Time equipment is designed to be installed and operated as safely as possible...however, hazards do exist.



Signal Words

Signal words are used in conjunction with the safety–alert symbol to identify the severity of the warning.

DANGER indicates an imminently hazardous situation which, if not avoided, **WILL** result in death or serious injury.

WARNING indicates a potentially hazardous situation which, if not avoided, **COULD** result in death or serious injury.

CAUTION indicates a hazardous situation which, if not avoided, **MAY** result in minor or moderate injury.



DANGER



WARNING



CAUTION

DANGER—ELECTRICAL HAZARD

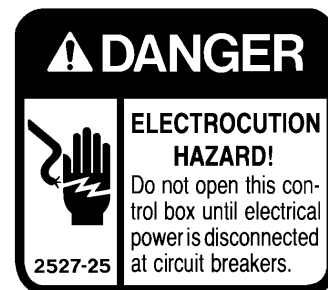
Disconnect electrical power before inspecting or servicing equipment unless maintenance instructions specifically state otherwise.

Ground all electrical equipment for safety.

All electrical wiring must be done by a qualified electrician in accordance with local and national electric codes.

Ground all non-current carrying metal parts to guard against electrical shock.

With the exception of motor overload protection, electrical disconnects and over current protection are not supplied with the equipment.



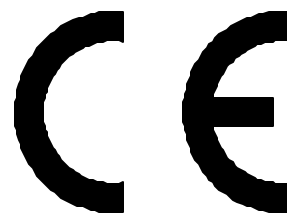
SUPPORT INFORMATION

Using this equipment for any other purpose or in a way not within the operating recommendations specified in this manual will void the warranty and may cause personal injury and/or death.

This manual is designed to provide comprehensive installation, wiring, operation, and parts listing information.

IMPORTANT: CE stands for *certified Europe*. It is a standard which equipment must meet or exceed in order to be sold in Europe. CE provides a benchmark for safety and manufacturing issues. CE is required only on equipment sold in Europe.

Chore-Time Equipment recognizes CE Mark and pursues compliance in all applicable products.



SAFETY INFORMATION

Caution, Warning and Danger Decals have been placed on the equipment to warn of potentially dangerous situations. Care should be taken to keep this information intact and easy to read at all times. Replace missing or damaged safety signs.

Using the equipment for purposes other than specified in this manual may cause personal injury or damage to the equipment.

Safety–Alert Symbol

This is a safety–alert symbol. When you see this symbol on your equipment, be alert to the potential for personal injury. Chore-Time equipment is designed to be installed and operated as safely as possible...however, hazards do exist.



Signal Words

Signal words are used in conjunction with the safety–alert symbol to identify the severity of the warning.

DANGER indicates an imminently hazardous situation which, if not avoided, **WILL** result in death or serious injury.

WARNING indicates a potentially hazardous situation which, if not avoided, **COULD** result in death or serious injury.

CAUTION indicates a hazardous situation which, if not avoided, **MAY** result in minor or moderate injury.



DANGER



WARNING



CAUTION

DANGER—ELECTRICAL HAZARD

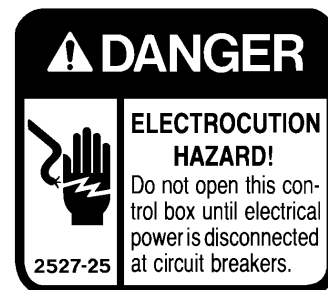
Disconnect electrical power before inspecting or servicing equipment unless maintenance instructions specifically state otherwise.

Ground all electrical equipment for safety.

All electrical wiring must be done by a qualified electrician in accordance with local and national electric codes.

Ground all non-current carrying metal parts to guard against electrical shock.

With the exception of motor overload protection, electrical disconnects and over current protection are not supplied with the equipment.



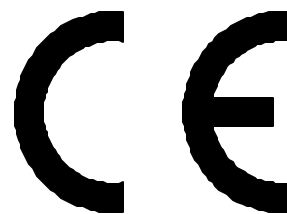
SUPPORT INFORMATION

Using this equipment for any other purpose or in a way not within the operating recommendations specified in this manual will void the warranty and may cause personal injury and/or death.

This manual is designed to provide comprehensive installation, wiring, operation, and parts listing information.

IMPORTANT: CE stands for *certified Europe*. It is a standard which equipment must meet or exceed in order to be sold in Europe. CE provides a benchmark for safety and manufacturing issues. CE is required only on equipment sold in Europe.

Chore-Time Equipment recognizes CE Mark and pursues compliance in all applicable products.



Meal-Time Control (part no. 34385) Information:

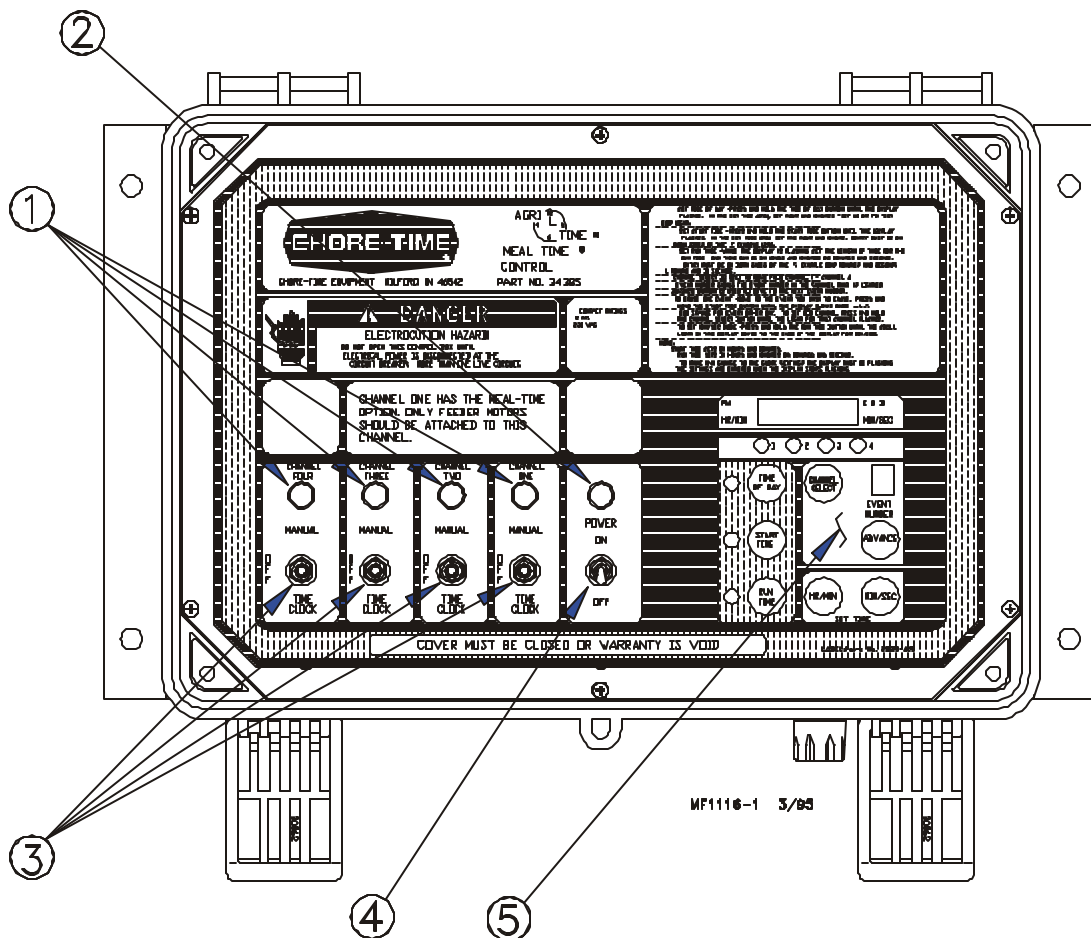
The Meal-Time Control is primarily designed to meet the feeding needs of broiler applications. The Meal-Time Control is set up with Channel 1 being the feeder channel. Feeder line motors should be powered only by Channel 1.

The Meal-Time channel (Channel 1) allows any feeder line that is running when the run time is finished to continue to run until the line is satisfied.

The other channels (2,3, & 4) may be used to control other equipment (lights, fans, water solenoids, etc.).

Each channel has a 2 H.P. (max.), 230 V. power relay.

Figure 1 shows the front of the Meal-Time Control. The individual switches, pilot lights and the 4-Channel Time Clock are noted.



<u>Key</u>	<u>Description</u>
1	Pilot lights indicating active channels.
2	Pilot light indicating the power switch is "ON".
3	Switches used to set individual Channels to MANUAL, OFF, or TIME CLOCK mode.
4	Meal-Time Control Power Switch
5	AGRI-TIME Timer

Meal-Time Control (part no. 34385) Information:

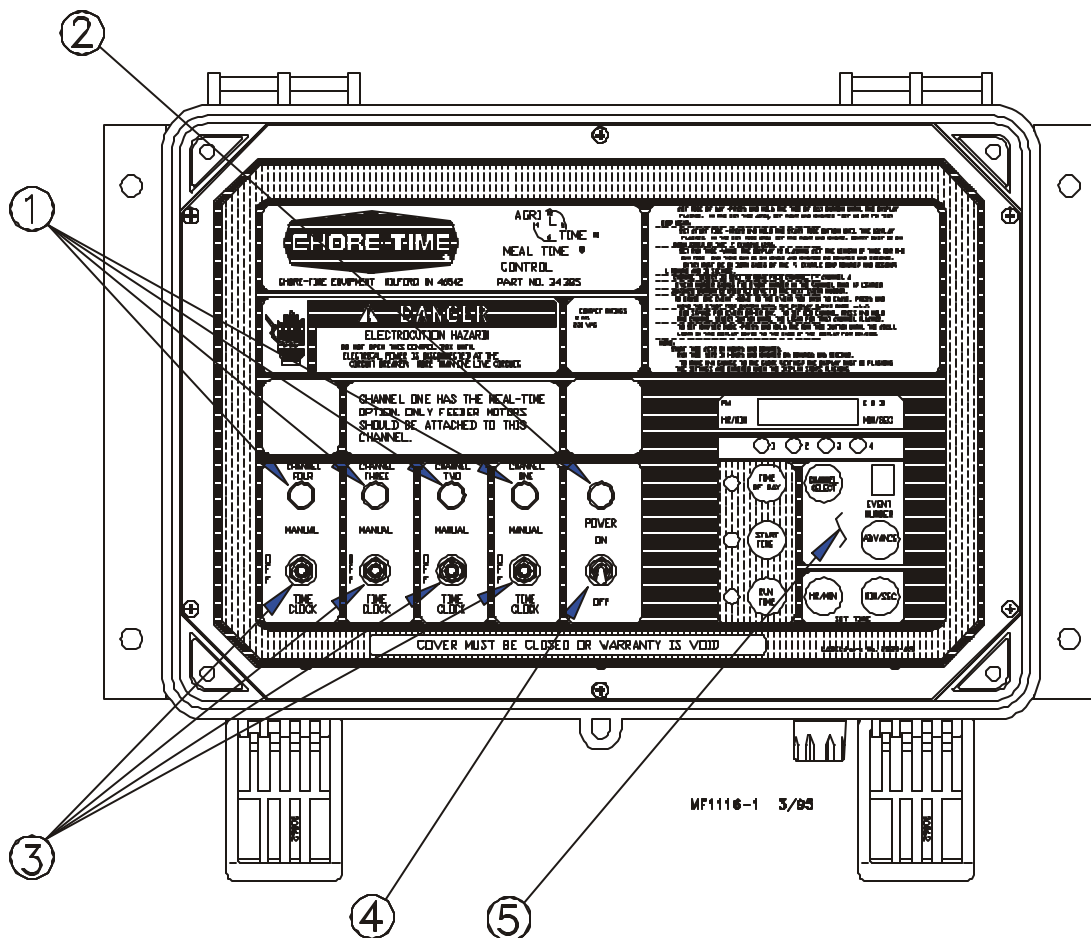
The Meal-Time Control is primarily designed to meet the feeding needs of broiler applications. The Meal-Time Control is set up with Channel 1 being the feeder channel. Feeder line motors should be powered only by Channel 1.

The Meal-Time channel (Channel 1) allows any feeder line that is running when the run time is finished to continue to run until the line is satisfied.

The other channels (2,3, & 4) may be used to control other equipment (lights, fans, water solenoids, etc.).

Each channel has a 2 H.P. (max.), 230 V. power relay.

Figure 1 shows the front of the Meal-Time Control. The individual switches, pilot lights and the 4-Channel Time Clock are noted.



<u>Key</u>	<u>Description</u>
1	Pilot lights indicating active channels.
2	Pilot light indicating the power switch is "ON".
3	Switches used to set individual Channels to MANUAL, OFF, or TIME CLOCK mode.
4	Meal-Time Control Power Switch
5	AGRI-TIME Timer

Features & Functions

- The Agri Timer has (4) programmable channels.
- Each channel can have up to 8 events (feedings, waterings, etc.).
- Each event will have a start time and run time programmed into the timer. The start times are programmed in hours/minutes. The run times are programmed in hours/minutes or minutes/seconds.
- Any or all the channels can be set up as an every other day channel.
- Two “AAA” batteries are used as a backup only for time of day if power is temporarily removed. The batteries should be replaced annually.

Battery replacement procedure: Cut the wire tie to remove batteries. Replace with new batteries (observe + and - poles of battery). Use a wire tie to secure the new batteries in the battery holder.

- Program settings will be stored in memory until a program change is made. **Power loss will not erase the programs.**
- The Start Time, Run Time, and Channel Select buttons have dual functions.

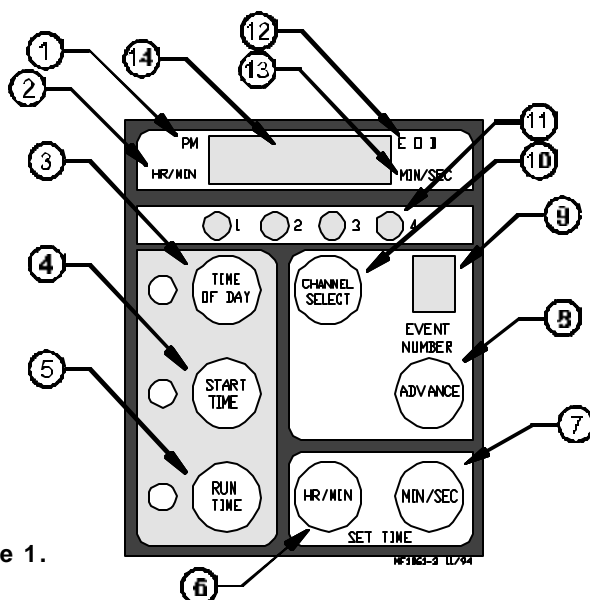


Figure 1.

Legend: Figure 1.

Key	Description		
1	P.M. Indicator	8	Used to advance to next event in channel.
2	Hour/Minute Indicator	9	Displays the event number being programmed.
3	Used to set time of day, a.m./p.m., and skip mode.	10	Used to advance through the channels. Also used to set skip channel.
4	Used to set start time and to erase individual operations.	11	Indicates which channel(s) is active.
5	Used to set length of run time. Also used to toggle between hours/minutes and minutes/seconds.	12	Indicates the day to be skipped.
6	Used to set hours/minutes.	13	Minutes/Seconds Indicator
7	Used to set minutes/seconds	14	Display Window

Features & Functions

- The Agri Timer has (4) programmable channels.
- Each channel can have up to 8 events (feedings, waterings, etc.).
- Each event will have a start time and run time programmed into the timer. The start times are programmed in hours/minutes. The run times are programmed in hours/minutes or minutes/seconds.
- Any or all the channels can be set up as an every other day channel.
- Two "AAA" batteries are used as a backup only for time of day if power is temporarily removed. The batteries should be replaced annually.

Battery replacement procedure: Cut the wire tie to remove batteries. Replace with new batteries (observe + and - poles of battery). Use a wire tie to secure the new batteries in the battery holder.

- Program settings will be stored in memory until a program change is made. **Power loss will not erase the programs.**
- The Start Time, Run Time, and Channel Select buttons have dual functions.

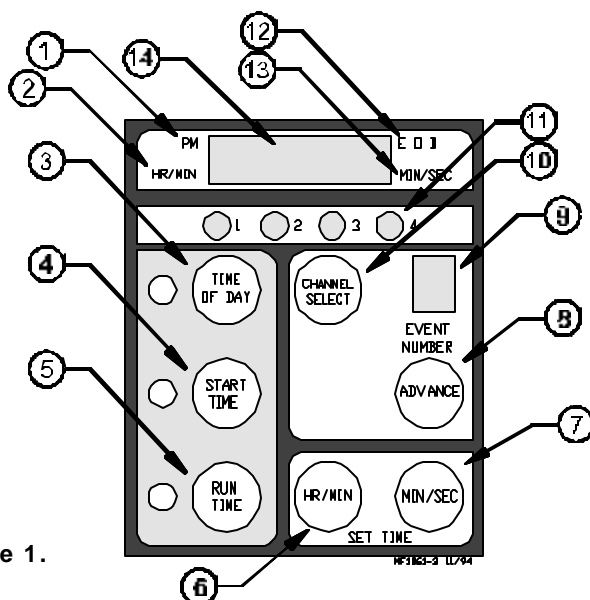


Figure 1.

Legend: Figure 1.

Key	Description		
1	P.M. Indicator	8	Used to advance to next event in channel.
2	Hour/Minute Indicator	9	Displays the event number being programmed.
3	Used to set time of day, a.m./p.m., and skip mode.	10	Used to advance through the channels. Also used to set skip channel.
4	Used to set start time and to erase individual operations.	11	Indicates which channel(s) is active.
5	Used to set length of run time. Also used to toggle between hours/minutes and minutes/seconds.	12	Indicates the day to be skipped.
6	Used to set hours/minutes.	13	Minutes/Seconds Indicator
7	Used to set minutes/seconds	14	Display Window

Programming the 4-Channel Time Clock

Before beginning programming the time clock, fill in the desired starting times and running times. This will make programming the clock much easier.

IMPORTANT: Channel 1 must be used as the feed channel.

Channel 2 must be used as the fill system channel.

Channels 3 & 4 may be used to control other equipment, lights, etc.

A start time and a run time must be entered for each desired operation. If either are missing or incomplete, the operation will be ignored.

The display must be flashing in order to make any program changes.

When the display stops flashing, the new information will be added.

CHANNEL 1		CHANNEL 2		CHANNEL 3		CHANNEL 4	
START TIME	RUN TIME	START TIME	RUN TIME	START TIME	RUN TIME	START TIME	RUN TIME

To Reset the Time Clock:

The time clock must be reset upon initial installation.

With power off to the system, press and hold the START TIME button while turning the power on. This will erase any entries that were programmed in the factory or field.

To Set the Time of Day:

Press and hold the TIME OF DAY button until the display begins to flash.

Use the HR/MIN key on the time clock. Be sure to set the clock to the appropriate a.m. or p.m.

NOTE: Entries must be on both sides of the colon (i.e. 01:20).

To Set Every Other Day Mode:

Press the HR/MIN button to advance the display until the indicator beside the EOD TODAY is illuminated. Press the appropriate a.m. or p.m. This will set the proper sequence for the every-other-day mode. It does **not**, however, set the every-other-day Channel. The every-other-day Channel will be set later in the programming.

Programming the 4-Channel Time Clock

Before beginning programming the time clock, fill in the desired starting times and running times. This will make programming the clock much easier.

IMPORTANT: Channel 1 must be used as the feed channel.

Channel 2 must be used as the fill system channel.

Channels 3 & 4 may be used to control other equipment, lights, etc.

A start time and a run time must be entered for each desired operation. If either are missing or incomplete, the operation will be ignored.

The display must be flashing in order to make any program changes.

When the display stops flashing, the new information will be added.

CHANNEL 1		CHANNEL 2		CHANNEL 3		CHANNEL 4	
START TIME	RUN TIME	START TIME	RUN TIME	START TIME	RUN TIME	START TIME	RUN TIME

To Reset the Time Clock:

The time clock must be reset upon initial installation.

With power off to the system, press and hold the START TIME button while turning the power on. This will erase any entries that were programmed in the factory or field.

To Set the Time of Day:

Press and hold the TIME OF DAY button until the display begins to flash.

Use the HR/MIN key on the time clock. Be sure to set the clock to the appropriate a.m. or p.m.

NOTE: Entries must be on both sides of the colon (i.e. 01:20).

To Set Every Other Day Mode:

Press the HR/MIN button to advance the display until the indicator beside the EOD TODAY is illuminated. Press the appropriate a.m. or p.m. This will set the proper sequence for the every-other-day mode. It does **not**, however, set the every-other-day Channel. The every-other-day Channel will be set later in the programming.

To Set a Start Time:

Press and hold the START TIME button until the display starts flashing.

Enter the start time for the first channel using the buttons in the SET TIME area of the time clock. The start times will be set in hours and minutes. Be sure to set the appropriate a.m. or p.m. settings.

NOTE: Entries must be on both sides of the colon (i.e. 01:20).

To Enter a Run Time:

Use the buttons in the SET TIME area of the time clock. The run times may be set in minutes/seconds or hours/minutes (i.e. 01:20).

NOTE: To set the run times in minutes/seconds, press and hold the RUN TIME button until the indicator beside MIN/SEC is illuminated.

NOTE: Entries must be on both sides of the colon (i.e. 01:20).

To Assign Skip Day Mode to a Channel:

Press and hold the CHANNEL SELECT button until the appropriate CHANNEL indicator starts to flash. To remove skip day mode from a channel, press and hold the CHANNEL SELECT button until the indicator stops flashing.

To Move Through a Channel:

Press the ADVANCE button to move to the next event in a channel. The EVENT NUMBER display window changes as the ADVANCE button is pressed.

Follow the steps above to set the remainder of the channels and events.

To Erase a Single Event:

Press the CHANNEL SELECT button and the ADVANCE button to select the event you wish to remove.

Press and hold the START TIME button until the display shows bars. This will remove appropriate start time and run time.

To Erase All Start Times and Run Times:

Remove power to the Control Box.

Press and hold the START TIME button (for approximately 5 seconds) while turning power on to the Control Box. This should remove all entries from the program. However, the time of day will not be erased.

To Review the Program:

Press and hold the START TIME button until the display begins to flash. Using the START TIME, RUN TIME, ADVANCE, and CHANNEL SELECT buttons you can view each of the programmed entries (events).

To Set a Start Time:

Press and hold the START TIME button until the display starts flashing.

Enter the start time for the first channel using the buttons in the SET TIME area of the time clock. The start times will be set in hours and minutes. Be sure to set the appropriate a.m. or p.m. settings.

NOTE: Entries must be on both sides of the colon (i.e. 01:20).

To Enter a Run Time:

Use the buttons in the SET TIME area of the time clock. The run times may be set in minutes/seconds or hours/minutes (i.e. 01:20).

NOTE: To set the run times in minutes/seconds, press and hold the RUN TIME button until the indicator beside MIN/SEC is illuminated.

NOTE: Entries must be on both sides of the colon (i.e. 01:20).

To Assign Skip Day Mode to a Channel:

Press and hold the CHANNEL SELECT button until the appropriate CHANNEL indicator starts to flash. To remove skip day mode from a channel, press and hold the CHANNEL SELECT button until the indicator stops flashing.

To Move Through a Channel:

Press the ADVANCE button to move to the next event in a channel. The EVENT NUMBER display window changes as the ADVANCE button is pressed.

Follow the steps above to set the remainder of the channels and events.

To Erase a Single Event:

Press the CHANNEL SELECT button and the ADVANCE button to select the event you wish to remove.

Press and hold the START TIME button until the display shows bars. This will remove appropriate start time and run time.

To Erase All Start Times and Run Times:

Remove power to the Control Box.

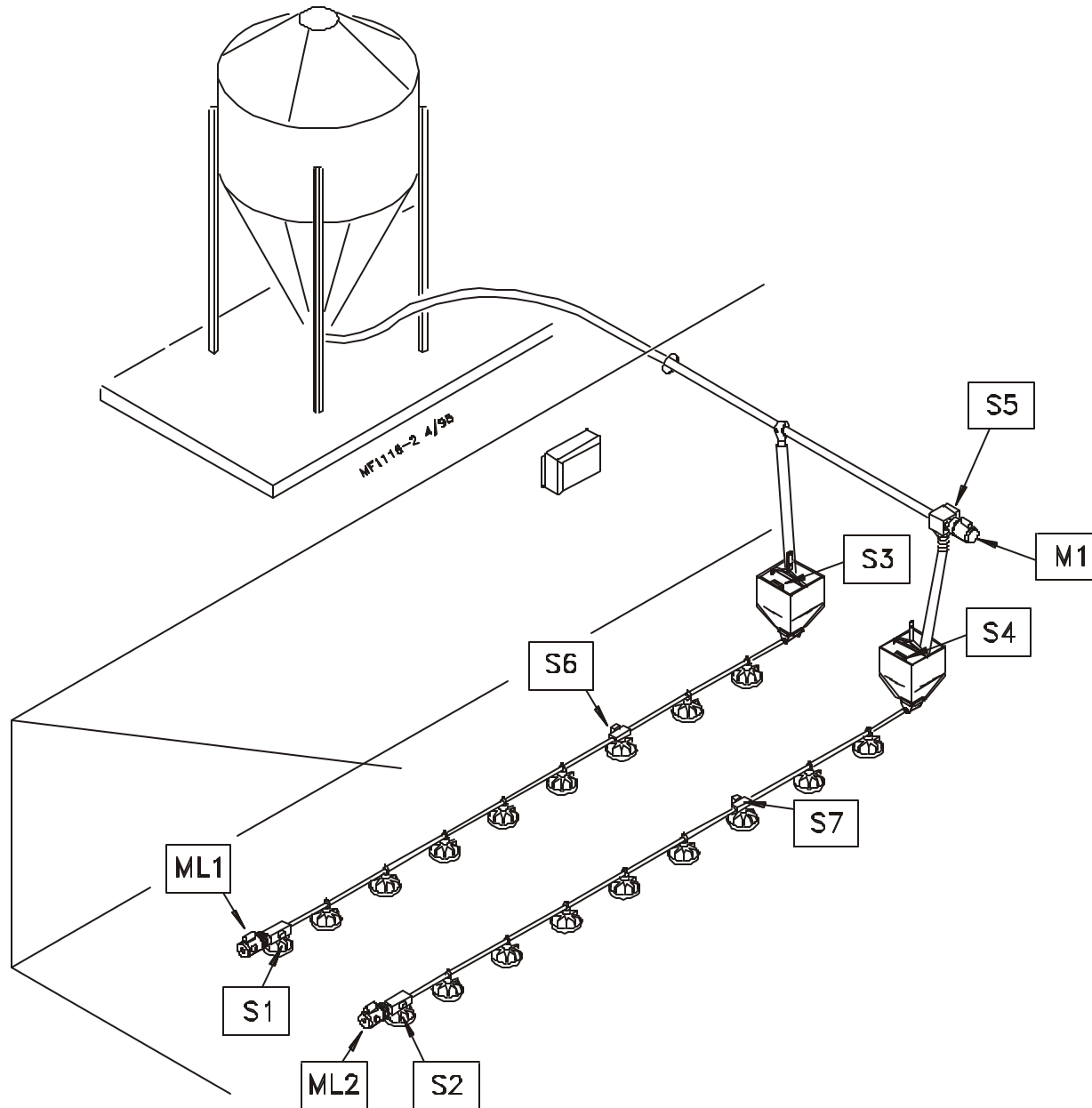
Press and hold the START TIME button (for approximately 5 seconds) while turning power on to the Control Box. This should remove all entries from the program. However, the time of day will not be erased.

To Review the Program:

Press and hold the START TIME button until the display begins to flash. Using the START TIME, RUN TIME, ADVANCE, and CHANNEL SELECT buttons you can view each of the programmed entries (events).

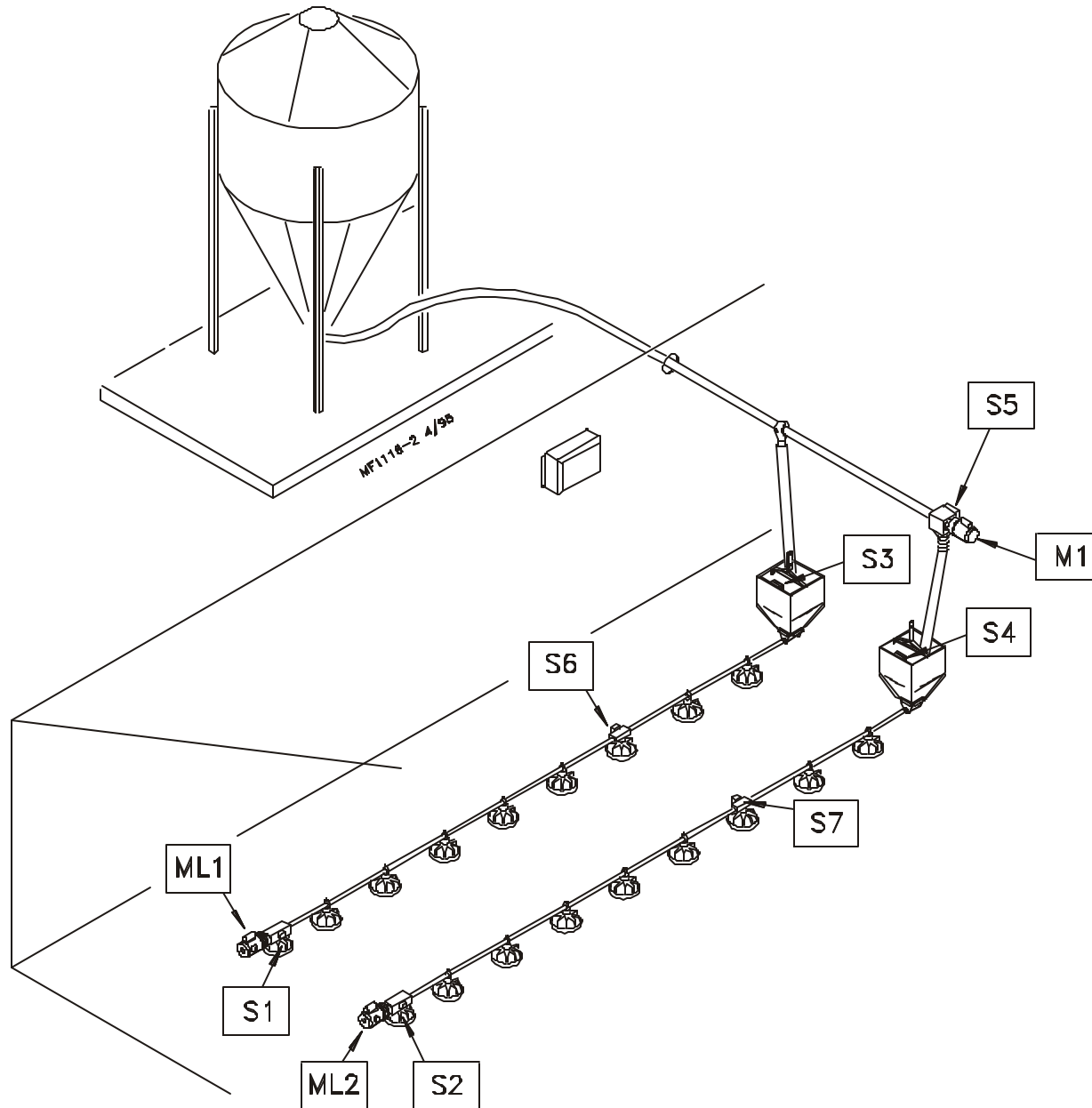
Component Location Diagram

Wire the system according to the applicable wiring diagram. Refer to this Component Layout Diagram to determine the motor, switch, etc. locations.



Component Location Diagram

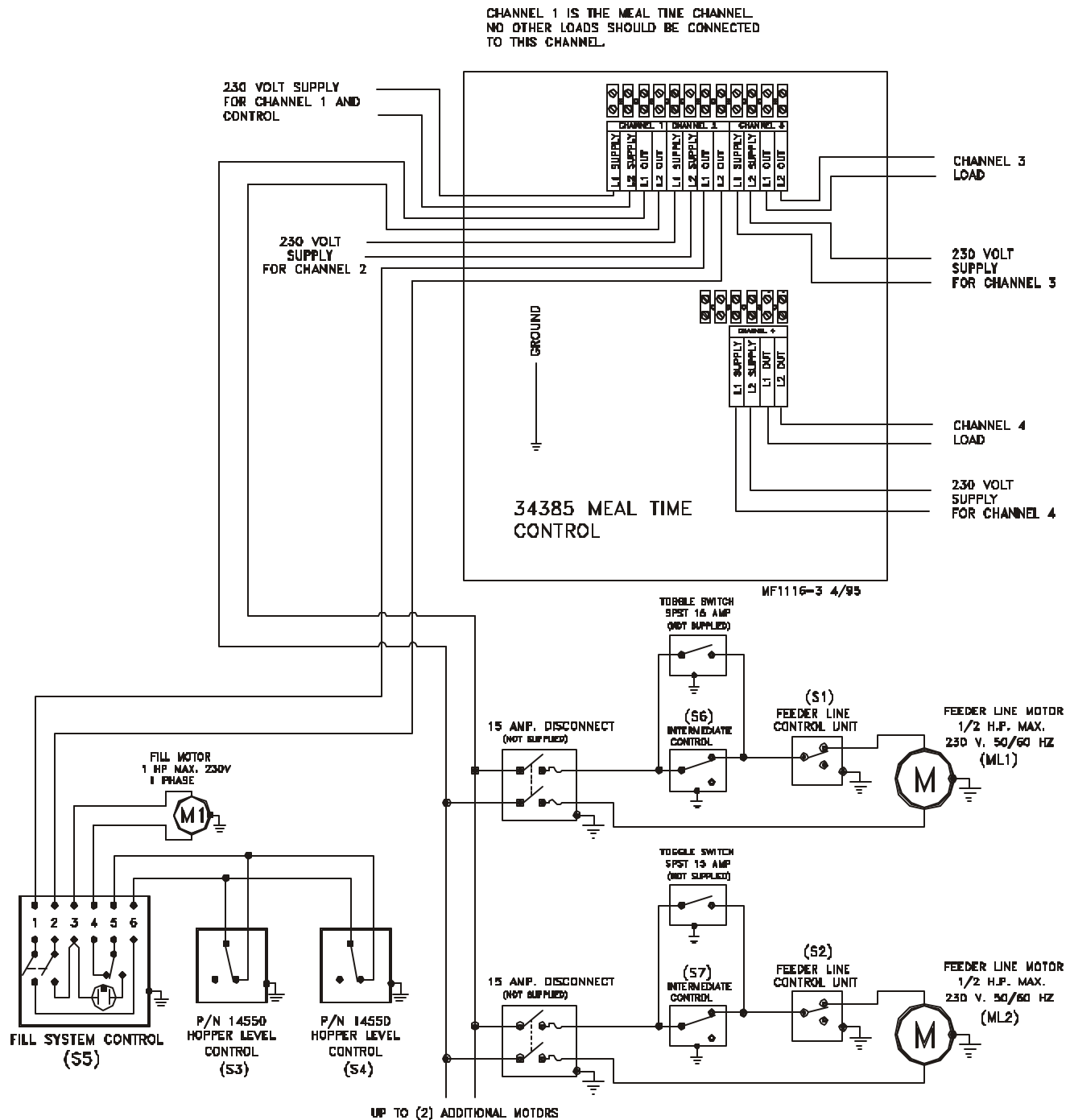
Wire the system according to the applicable wiring diagram. Refer to this Component Layout Diagram to determine the motor, switch, etc. locations.



34385 Meal-Time Control Wiring Diagram

(230 V., 50/60 Hz., Single Phase, w/o Motor Starters)

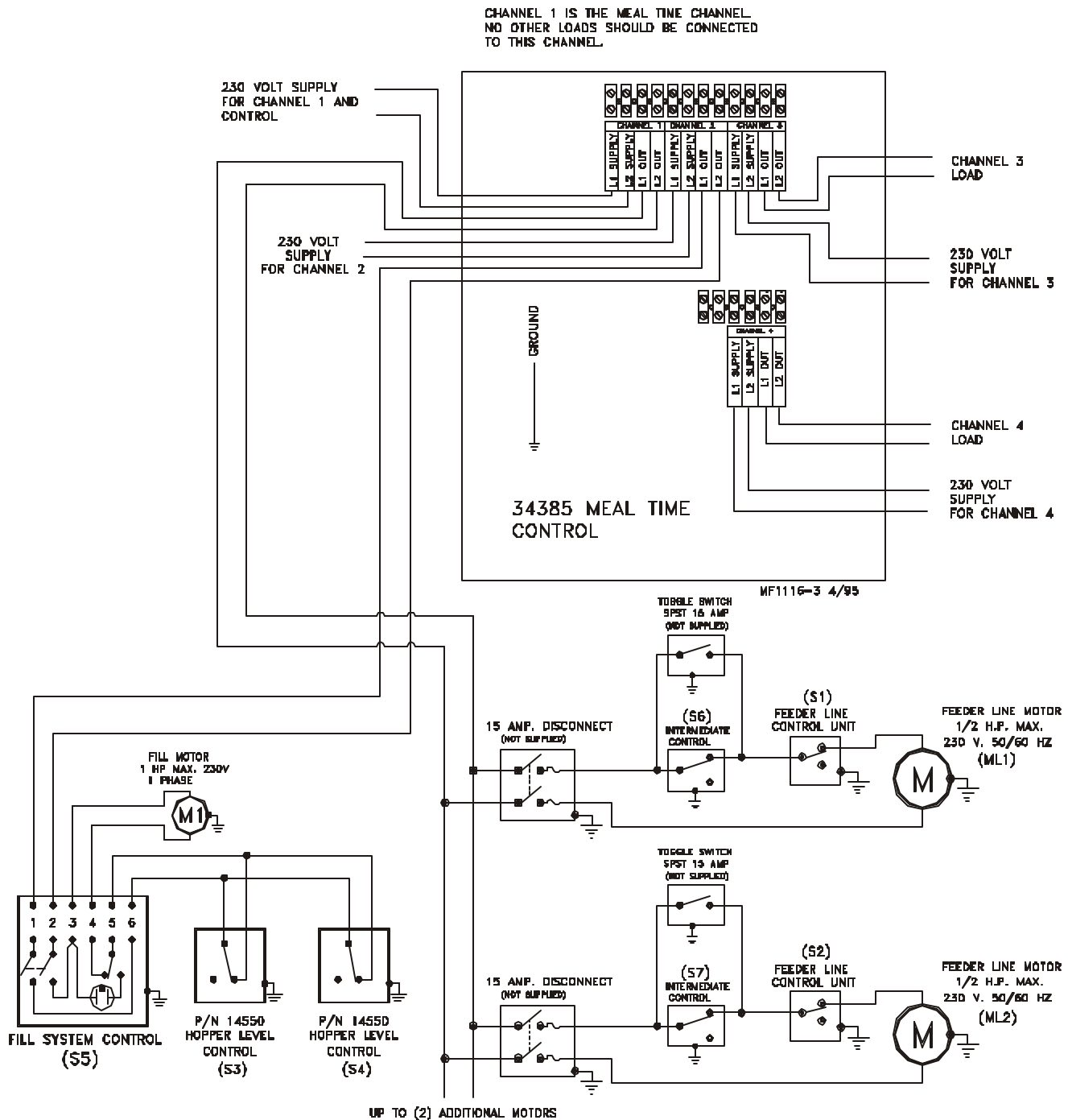
Note: Channel 1 is to be used for the feeder line motors only.



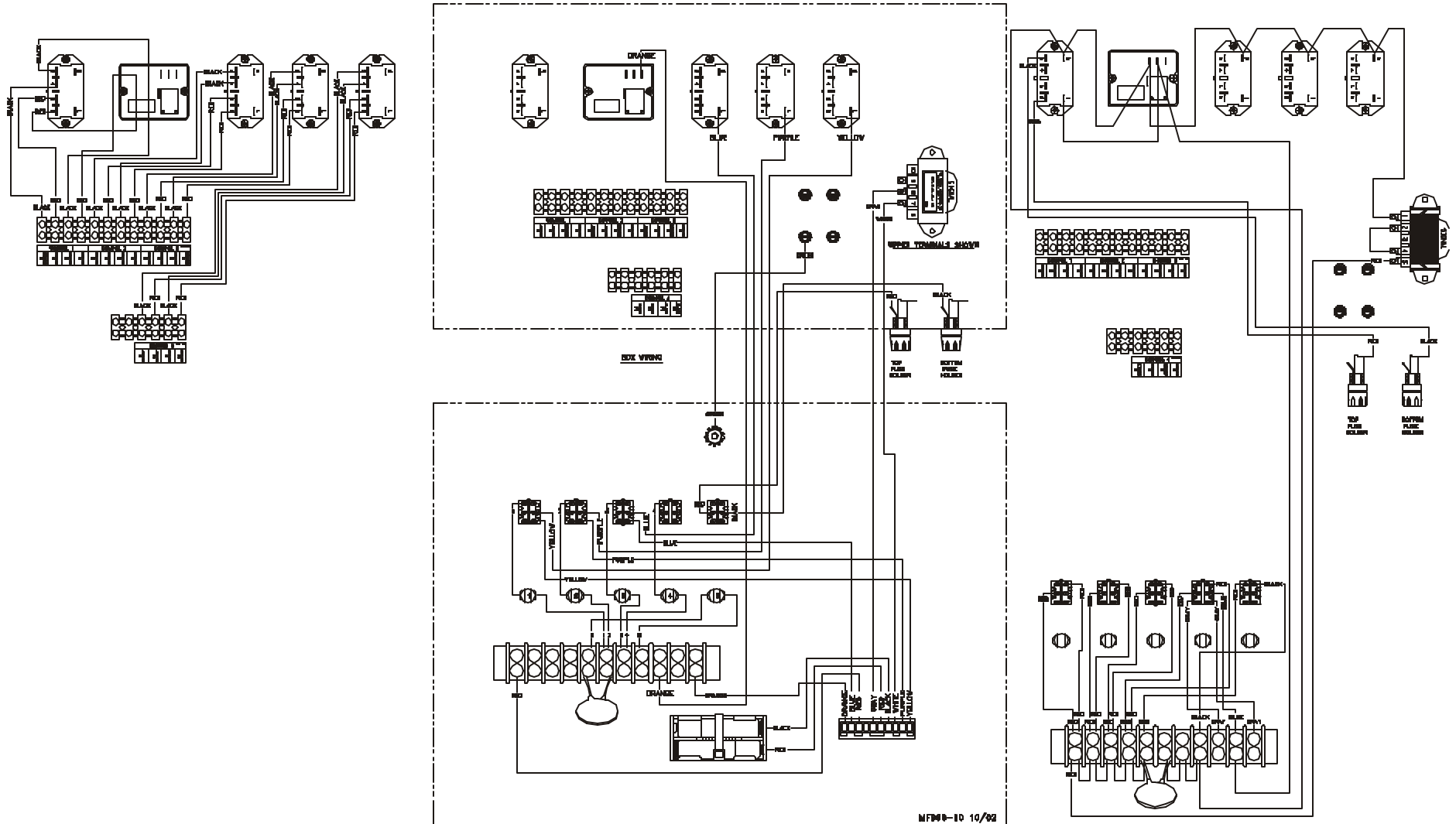
34385 Meal-Time Control Wiring Diagram

(230 V., 50/60 Hz., Single Phase, w/o Motor Starters)

Note: Channel 1 is to be used for the feeder line motors only.

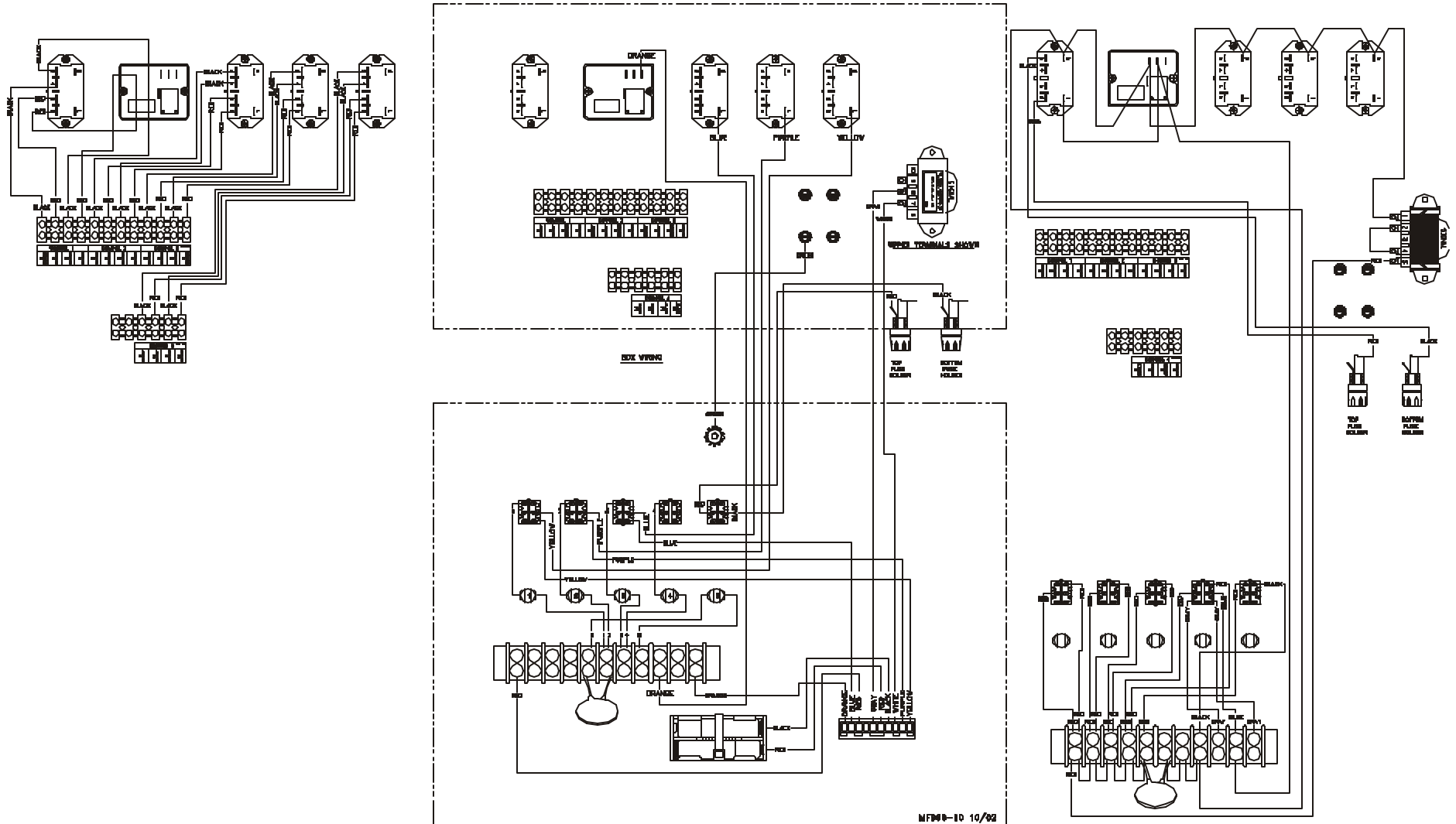


34385 Meal-Time Control Internal Wiring Diagram



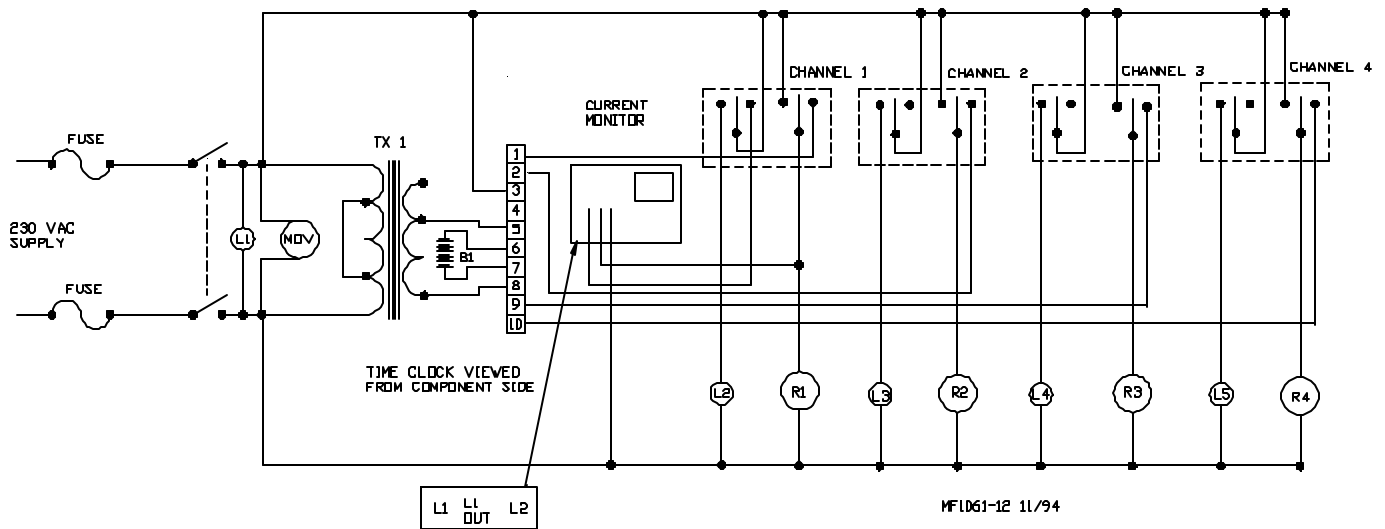
MF000-10 10/82

34385 Meal-Time Control Internal Wiring Diagram

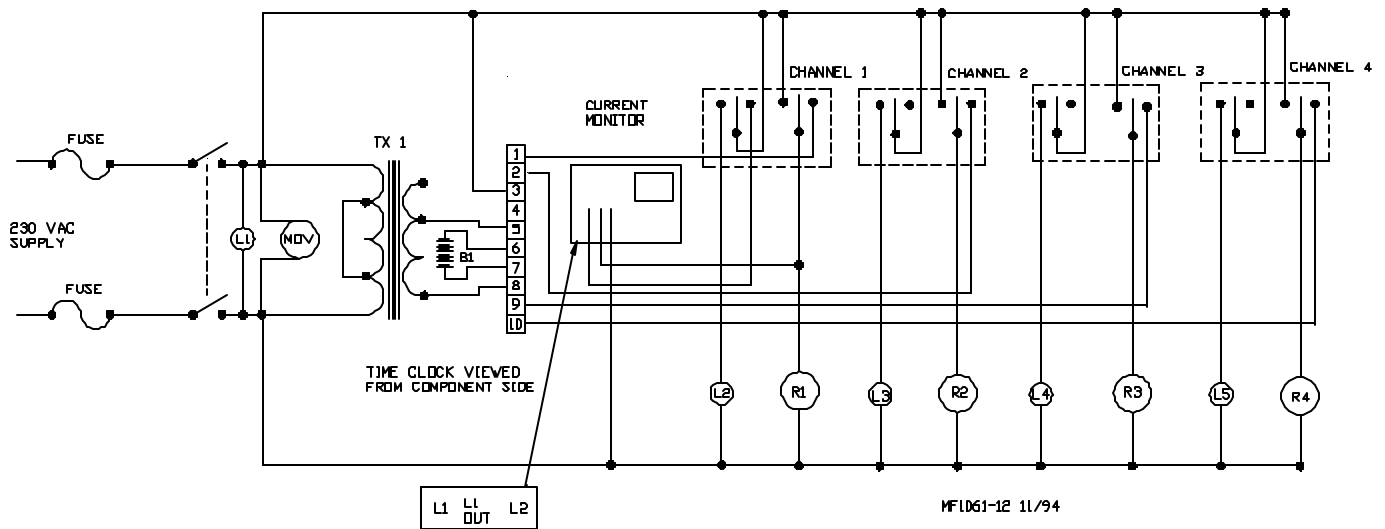


MF000-10 10/82

34385 Meal-Time Control Logic Wiring Diagram

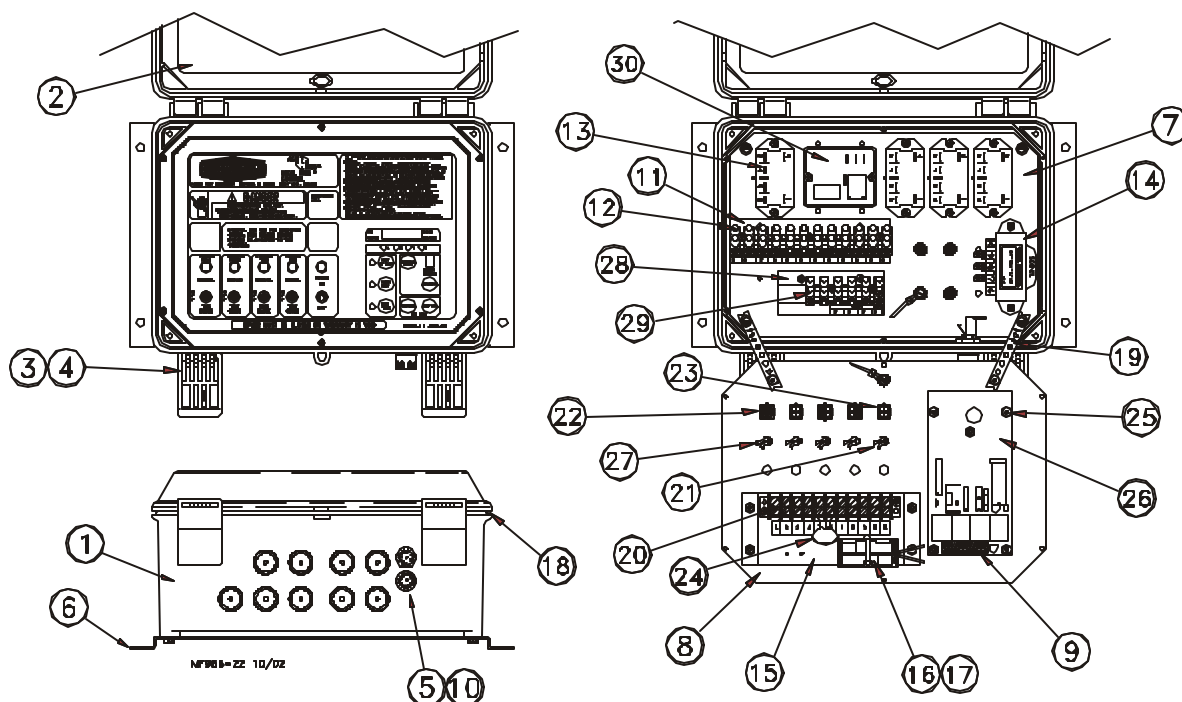


34385 Meal-Time Control Logic Wiring Diagram



Meal-Time Control Part List

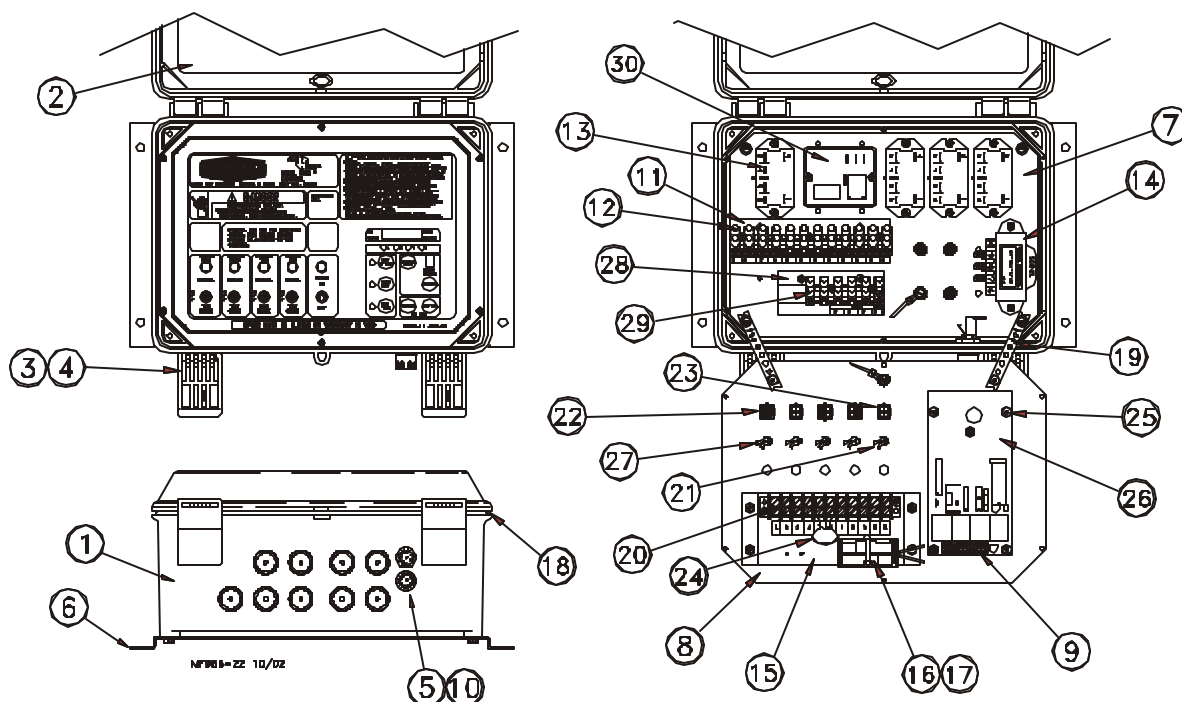
Part No. 34385



Item	Description	Part No	Item	Description	Part No
1	Control Box	30860-4	16	Battery Box Assembly	35095
2	Clear Lid	30859-1	17	"AAA" Battery (1.5V)	34584
3	Control Box Latch Pivot	30863	18	Seal	34767
4	Control Box Latch	30862	19	Strapping	29014-4
5	Fuse Holder	24431	20	Terminal Block	7347
6	Control Box Mount Panel	34852	21	Pilot Light	29708
7	Back Mount Panel	34564	22	Toggle Switch	34388
8	Front Panel	34565	23	Toggle Switch	34578
9	Time Clock Connector	35464	24	MOV	14063-1
10	3 Amp Fuse	20472	25	Nylon Hex Nut 1/4-20	8916
11	Terminal Mount Bracket	34563	26	Circuit Board	34384
12	Terminal Strip (12 position)	34925	27	Pilot Light Assembly	35461
13	OMRON RELAY 240 VAC	28904	28	Terminal Mount Bracket	35094
14	Dual Transformer (115/230 V)	34571	29	Terminal Strip	34925-6
15	Mount Bracket	34562	30	Current Monitor	35460

Meal-Time Control Part List

Part No. 34385



Item	Description	Part No	Item	Description	Part No
1	Control Box	30860-4	16	Battery Box Assembly	35095
2	Clear Lid	30859-1	17	"AAA" Battery (1.5V)	34584
3	Control Box Latch Pivot	30863	18	Seal	34767
4	Control Box Latch	30862	19	Strapping	29014-4
5	Fuse Holder	24431	20	Terminal Block	7347
6	Control Box Mount Panel	34852	21	Pilot Light	29708
7	Back Mount Panel	34564	22	Toggle Switch	34388
8	Front Panel	34565	23	Toggle Switch	34578
9	Time Clock Connector	35464	24	MOV	14063-1
10	3 Amp Fuse	20472	25	Nylon Hex Nut 1/4-20	8916
11	Terminal Mount Bracket	34563	26	Circuit Board	34384
12	Terminal Strip (12 position)	34925	27	Pilot Light Assembly	35461
13	OMRON RELAY 240 VAC	28904	28	Terminal Mount Bracket	35094
14	Dual Transformer (115/230 V)	34571	29	Terminal Strip	34925-6
15	Mount Bracket	34562	30	Current Monitor	35460