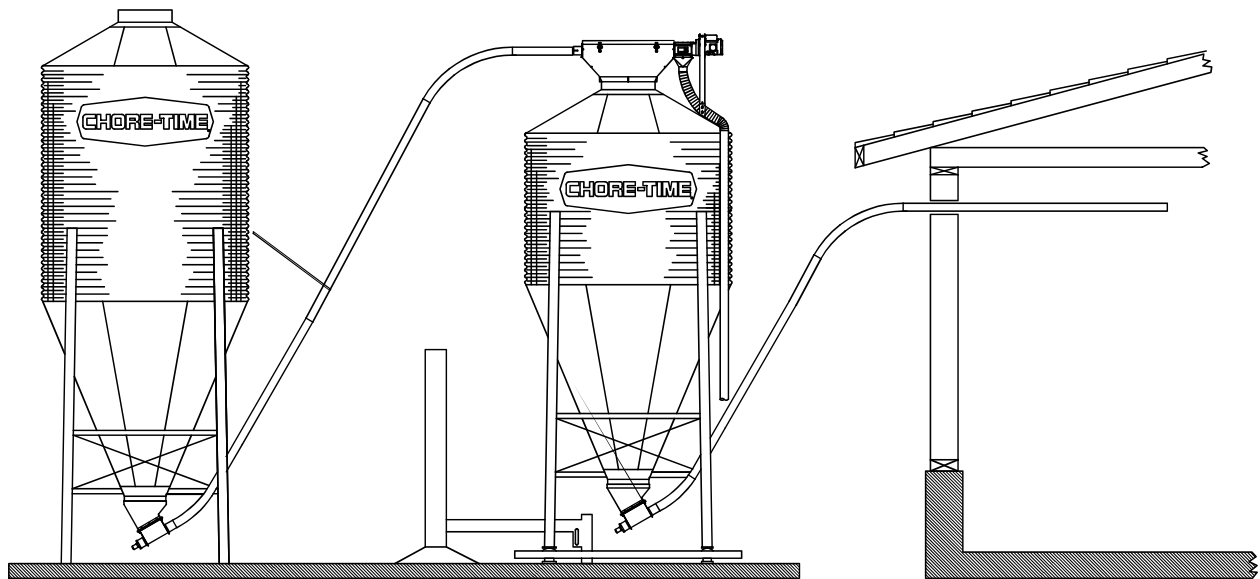


CHORE-TIME[®]

Poultry Production Systems

WEIGH-MATIC[®] Scale System Installation Manual



1291-01 6/01

Installation and Operators Manual

Installation and Operators Manual

Chore-Time Warranty

Chore-Time Group, a division of CTB, Inc. ("Chore-Time") warrants new CHORE-TIME WEIGH-MATIC® Scale System products manufactured by Chore-Time to be free from defects in material or workmanship under normal usage and conditions, for One (1) year from the date of installation by the original purchaser ("Warranty"). If such a defect is determined by Chore-Time to exist within the applicable period, Chore-Time will, at its option, (a) repair the Product or Component Part free of charge, F.O.B. the factory of manufacture or (b) replace the Product or Component Part free of charge, F.O.B. the factory of manufacture. This Warranty is not transferable, and applies only to the original purchaser of the Product.

CONDITIONS AND LIMITATIONS

THIS WARRANTY CONSTITUTES CHORE-TIME'S ENTIRE AND SOLE WARRANTY AND CHORE-TIME EXPRESSLY DISCLAIMS ANY AND ALL OTHER WARRANTIES, INCLUDING, BUT NOT LIMITED TO, EXPRESS AND IMPLIED WARRANTIES, INCLUDING, WITHOUT LIMITATION, WARRANTIES AS TO MERCHANTABILITY OR FITNESS FOR PARTICULAR PURPOSES. CHORE-TIME shall not be liable for any direct, indirect, incidental, consequential or special damages which any purchaser may suffer or claim to suffer as a result of any defect in the Product. Consequential or Special Damages as used herein include, but are not limited to, lost or damaged products or goods, costs of transportation, lost sales, lost orders, lost income, increased overhead, labor and incidental costs, and operational inefficiencies. *Some jurisdictions prohibit limitations on implied warranties and/or the exclusion or limitation of such damages, so these limitations and exclusions may not apply to you. This warranty gives the original purchaser specific legal rights. You may also have other rights based upon your specific jurisdiction.*

Compliance with federal, state and local rules which apply to the location, installation and use of the Product are the responsibility of the original purchaser, and CHORE-TIME shall not be liable for any damages which may result from non-compliance with such rules.

The following circumstances shall render this Warranty void:

- Modifications made to the Product not specifically delineated in the Product manual.
- Product not installed and/or operated in accordance with the instructions published by the CHORE-TIME.
- All components of the Product are not original equipment supplied by CHORE-TIME.
- Product was not purchased from and/or installed by a CHORE-TIME authorized distributor or certified representative.
- Product experienced malfunction or failure resulting from misuse, abuse, mismanagement, negligence, alteration, accident, or lack of proper maintenance, or from lightning strikes, electrical power surges or interruption of electricity.
- Product experienced corrosion, material deterioration and/or equipment malfunction caused by or consistent with the application of chemicals, minerals, sediments or other foreign elements.
- Product was used for any purpose other than for the care of poultry and livestock.

The Warranty and Extended Warranty may only be modified in writing by an officer of CHORE-TIME. CHORE-TIME shall have no obligation or responsibility for any representations or warranties made by or on behalf of any distributor, dealer, agent or certified representative.

Effective: **April, 2014**

Chore-Time Group
A division of CTB, Inc.
PO Box 2000
Milford, Indiana 46542-2000 USA
Phone (574) 658-4101 Fax (877) 730-8825
E-mail: poultry@choretime.com
Internet: www.choretimepoultry.com

Contents

Topic	Page
Chore-Time Warranty	2
General.....	4
Support Information.....	4
About This Manual.....	4
Safety Information	4
Safety Instructions	5
Follow Safety Instructions.....	5
Decal Descriptions.....	5
WEIGH-MATIC® Scales Installation	6
Bin Location.....	6
Bin pad locations and dimensions for:.....	8
7' [2.1 m] Storage Bin and Weigh Bin using two pads	8
9' [2.7 m] Storage Bin and Weigh Bin using two pads	8
7' [2.1 m] Storage Bin and Weigh Bin using one pad	9
9' [2.7 m] Storage Bin and Weigh Bin using one pad	9
Scale Assembly Installation.....	11
Feed Bin Installation	15
Installation of the Flex-Auger Feed Delivery System	15
Parts Listing	16
Repair Parts for WEIGH-MATIC Scales.....	16
Beam Box Assembly Part Number 5790.....	17

General

Support Information

The Chore-Time WEIGH-MATIC® Scale System is designed to weigh a predetermined amount of feed to be supplied to the feeding system. Using this equipment for any other purpose or in a way not within the operating recommendations specified in this manual will void the warranty and may cause personal injury.

This manual is designed to provide comprehensive planning and installation information. The Table of Contents provides a convenient overview of the information in this manual.

About This Manual

The intent of this manual is to help you in two ways. One is to follow step-by-step in the order of assembly of your product. The other way is for easy reference if you have questions in a particular area.

Important: Read ALL instructions carefully before starting construction.

Important: Pay particular attention to all SAFETY information.

- *Metric measurements are shown in millimeters and in brackets, unless otherwise specified. " " equals inches and " ' " equals feet in English measurements.*

Examples:

1" [25.4]

4' [1 219]

- Optional equipment contains necessary instructions for assembly or operation.
- Major changes from the last printing will be listed on the back cover.



- This Planning Symbol is used in areas where planning needs to take place before construction continues.

- Very small numbers near an illustration (*i.e.*, 1257-48) are identification of the graphic, not a part number.

Safety Information

Caution, Warning and Danger Decals have been placed on the equipment to warn of potentially dangerous situations. Care should be taken to keep this information intact and easy to read at all times. Replace missing or damaged safety decals immediately.

Using the equipment for purposes other than specified in this manual may cause personal injury and/or damage to the equipment.

Safety–Alert Symbol



This is a safety–alert symbol. When you see this symbol on your equipment, be alert to the potential for personal injury. This equipment is designed to be installed and operated as safely as possible...however, hazards do exist.

Understanding Signal Words

Signal words are used in conjunction with the safety–alert symbol to identify the severity of the warning.



DANGER indicates an imminently hazardous situation which, if not avoided, **WILL** result in death or serious injury.



WARNING indicates a potentially hazardous situation which, if not avoided, **COULD** result in death or serious injury.



CAUTION indicates a hazardous situation which, if not avoided, **MAY** result in minor or moderate injury.

Safety Instructions

Follow Safety Instructions

Carefully read all safety messages in this manual and on your equipment safety signs. Follow recommended precautions and safe operating practices.

Keep safety signs in good condition. Replace missing or damaged safety signs.

Decal Descriptions

DANGER: Moving Auger

This decal is placed on the Panel Weldment.

Severe personal injury will result, if the electrical power is not disconnected, prior to servicing the equipment.



DANGER: Electrical Hazard

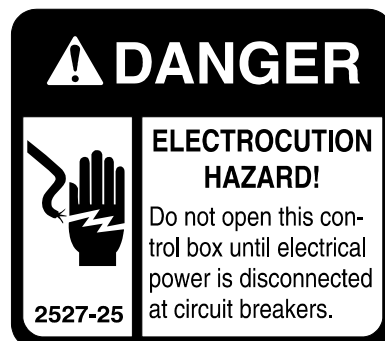
Disconnect electrical power before inspecting or servicing equipment unless maintenance instructions specifically state otherwise.

Ground all electrical equipment for safety.

All electrical wiring must be done by a qualified electrician in accordance with local and national electric codes.

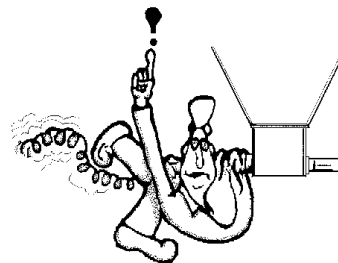
Ground all non-current carrying metal parts to guard against electrical shock.

With the exception of motor overload protection, electrical disconnects and over current protection are not supplied with the equipment.



CAUTION:

Use caution when working with the Auger — Springing Auger may cause personal injury.



WEIGH-MATIC® Scales Installation

Bin Location

Chore-Time has (2) available Scale Systems: the (mechanical) WEIGH-MATIC, shown, and the Digital WEIGH-MATIC. Refer to the instruction manual shipped with the Digital WEIGH-MATIC for installation and operation information.

Figure 1 shows a standard WEIGH-MATIC layout. Typically, the Weigh Bin is set 8' to 10' [2.4 m to 3 m] from the building. This varies somewhat depending on the desired height of the FLEX-AUGER® System inside the building. Two 45 degree PVC elbows and one 10' [3.0 m] PVC tube are standard with the WEIGH-MATIC Fill System. To place the bin nearer to or farther from the building, additional tubes or elbows may be required.

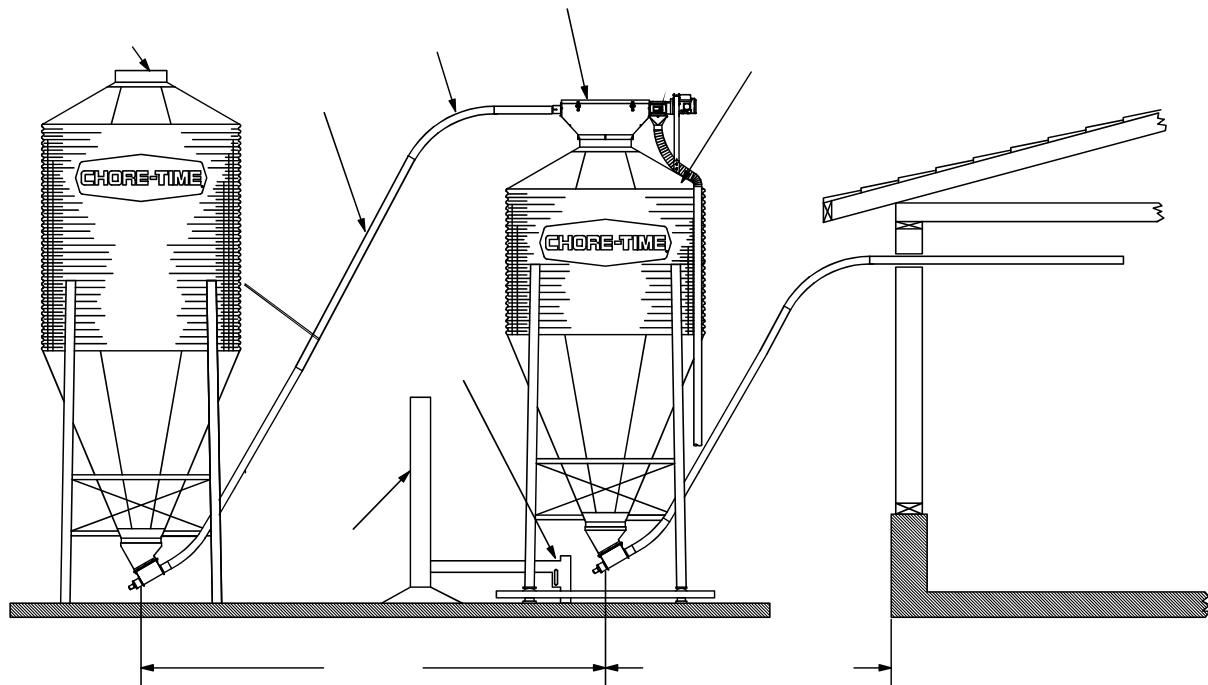


Figure 1. Scales installation overview

The Weigh Bin can be located directly in line or at 90 degrees to the FLEX-AUGER Delivery System. See **Figure 2**.

NOTE: The maximum cable length between the Beam Box and the 34380 Control is 40' [12.2 m].

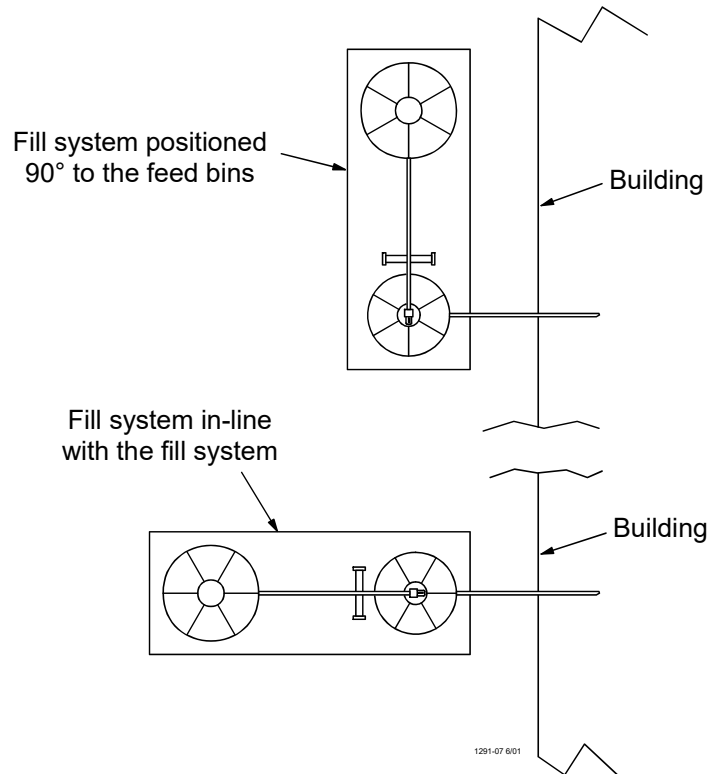


Figure 2. Bin placement options diagram

Figures 3 - 6 provide pad dimensions for 7' & 9' storage bins, using one pad or separate pads. Refer to the appropriate diagram. The Storage Bin may be located in line with the Weigh Bin or offset 90 degrees to one side or the other.

1. Chore-Time recommends the bin pads be approximately 12" [30.5 cm] thick. The surface of the concrete foundation must be level and smooth.

IMPORTANT: Allow concrete to harden completely before anchor bolt holes are drilled.

2. Use the 5978 Scale Template, as shown in **Figure 7**, or the Anchor Bolt Setting Diagram in **Figure 8**, to locate the correct position of the 16 anchor bolts for the scales. Use a 1/2" [13 mm] masonry drill to bore the holes at least 3" [76.2 mm] into the concrete weigh bin foundation.

Bin pad locations and dimensions for:

7' [2.1 m] Storage Bin and Weigh Bin using two pads

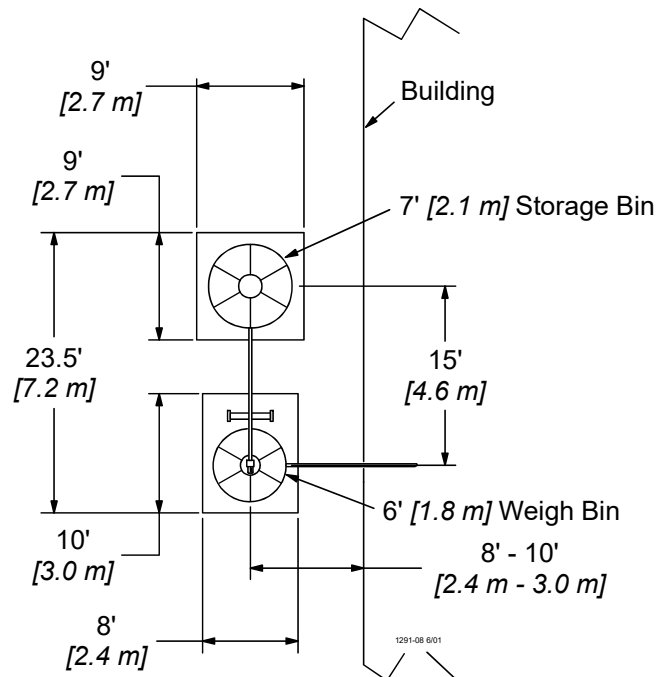


Figure 3. 7' [2.1 m] Storage Bin and Weigh Bin using two pads

9' [2.7 m] Storage Bin and Weigh Bin using two pads

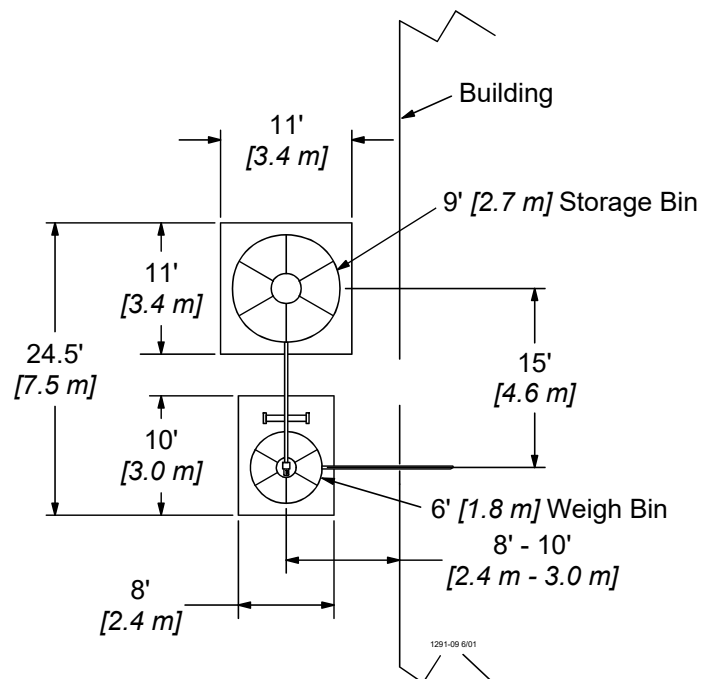


Figure 4. 9' [2.7 m] Storage Bin and Weigh Bin using two pads

7' [2.1 m] Storage Bin and Weigh Bin using one pad

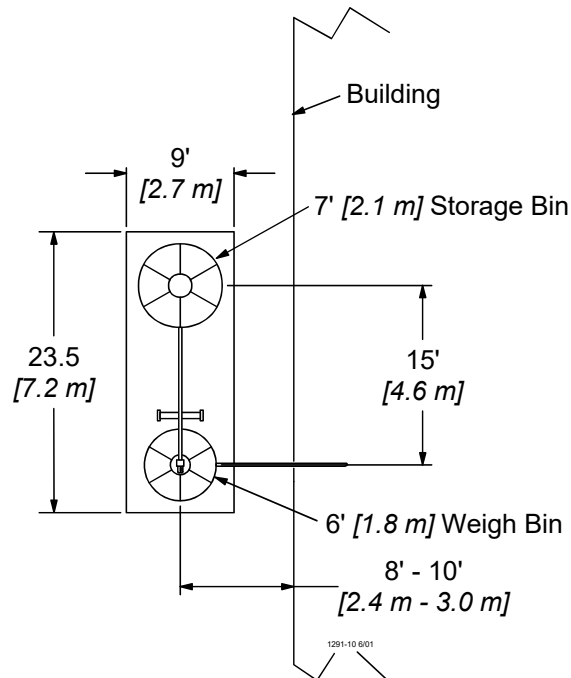


Figure 5. 7' [2.1 m] Storage Bin and Weigh Bin using one pad

9' [2.7 m] Storage Bin and Weigh Bin using one pad

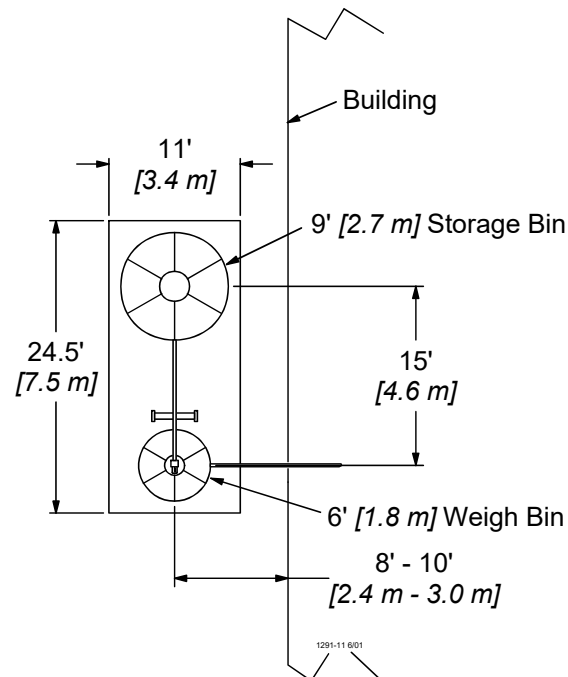


Figure 6. 9' [2.7 m] Storage Bin and Weigh Bin using one pad

Chore-Time strongly recommends use of the 5978 Scale Template to determine the location of Anchor Holes for the Scales and Bin.

1. The 5978 Scale Template Kit is available to quickly locate the position of the anchor holes for the Weigh-Matic Scales and Bin.
2. Loosely assemble the template as shown, using 5/16-18 hardware supplied.

3. Use a framing square to check all corners of the template. Make sure all corners of the template are square. Tighten the nuts.
4. Use a 1/2" [13 mm] carbide-tipped masonry drill bit to bore the anchor holes. The holes must be at least 3" [76.2 mm] deep to install the anchor bolts.

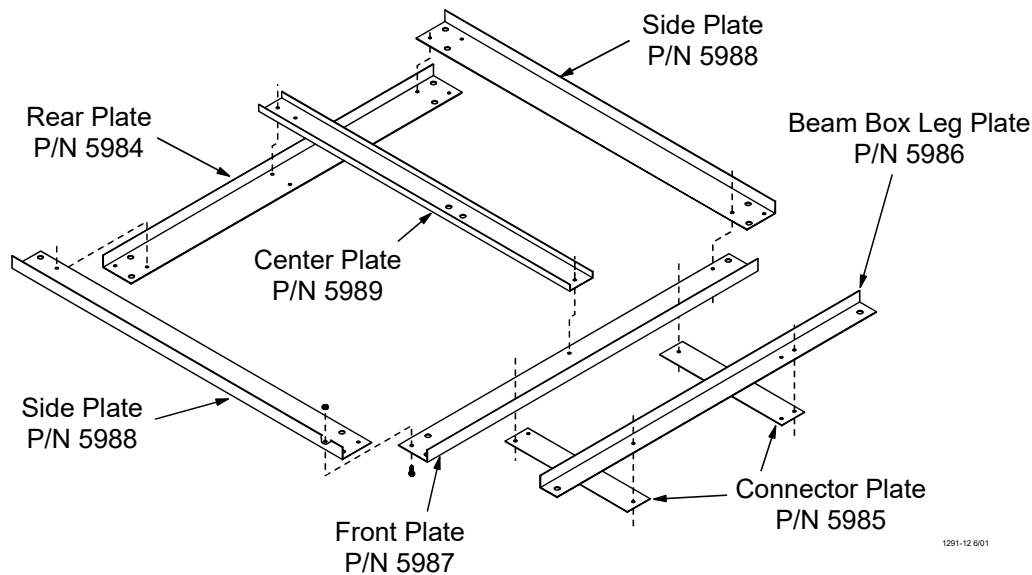


Figure 7. Template assembly diagram

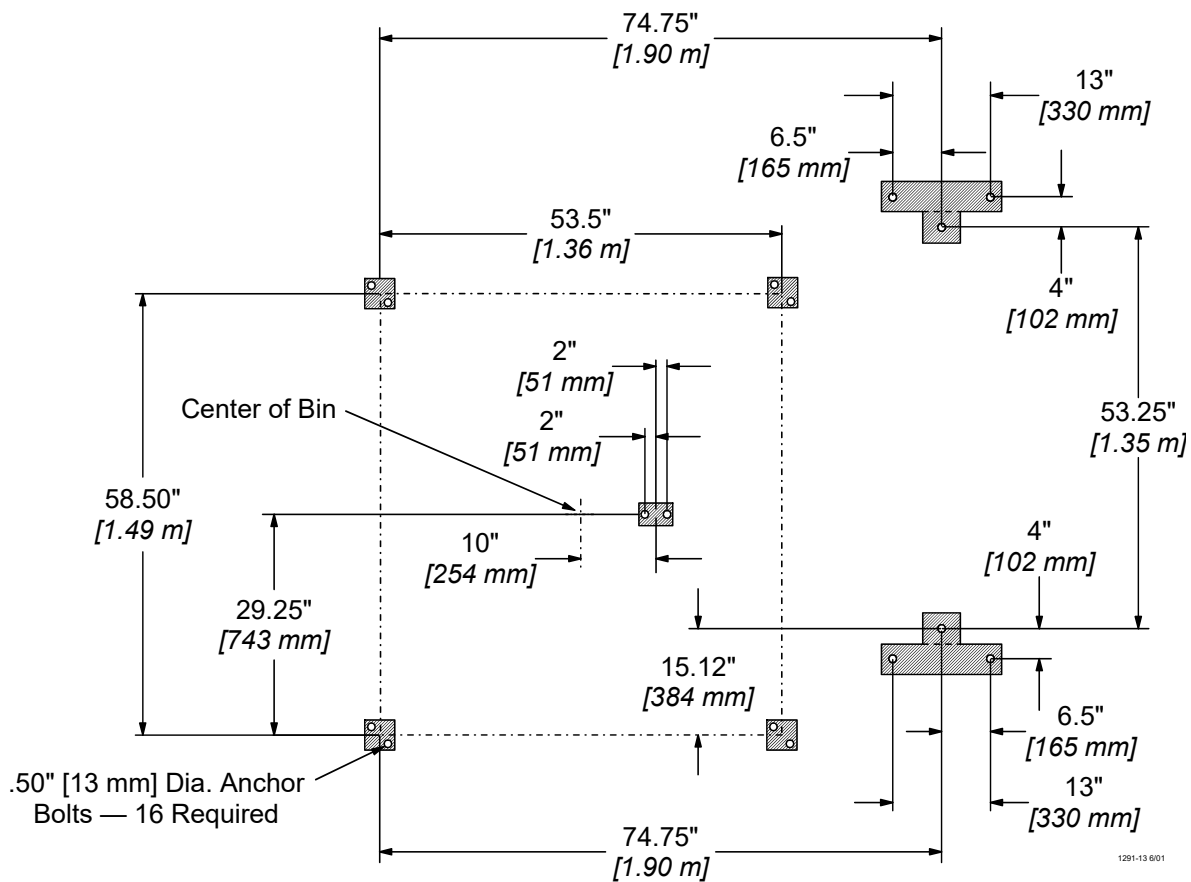


Figure 8. Anchor bolt layout diagram

Two Scales are available

5000 Pound [2268 kg] Scale

8000 Pound [3629 kg] Scale

If larger quantities of feed are desired, divide the total feed requirements into two or more equal feedings.

Scale Assembly Installation

5. Refer to **Figure 9** for the layout of the Stand Assemblies and Lever Assemblies.

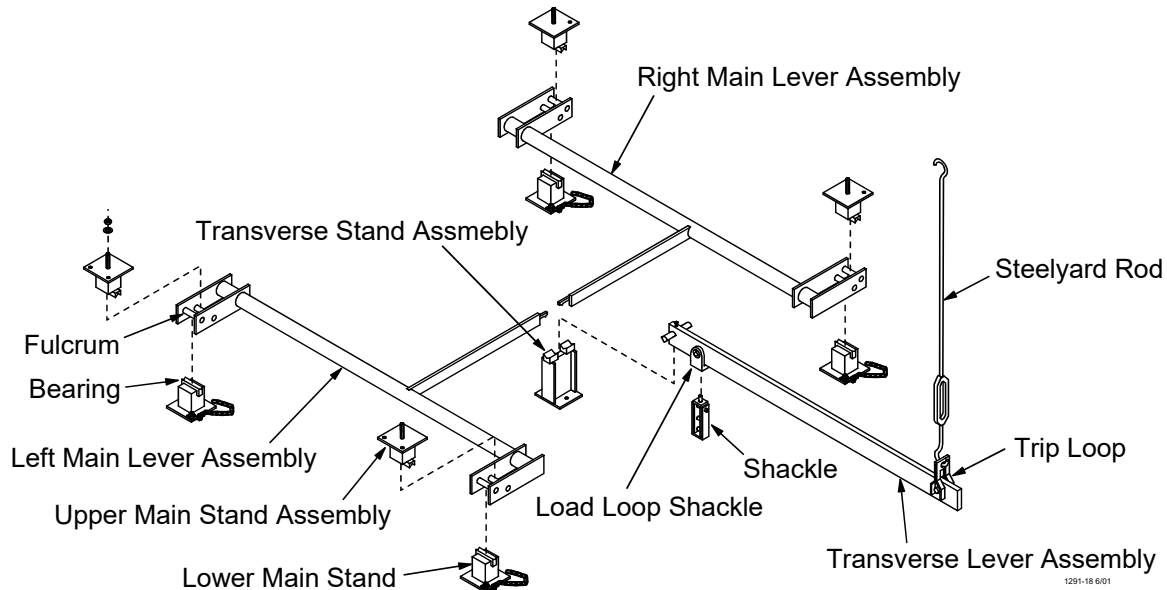


Figure 9. Installing the Stand Assemblies and Lever Assemblies

1. Place the four Lower Main Stands and the Transverse Stand over the holes drilled in the foundation. See **Figure 10** for correct placement. Install the Anchor Bolts and Safety Chain Assemblies but do not tighten the anchors until the scale levers are in position.
2. Check all Scale Pivots and Bearings, including those on the weighbeam. They must be **CLEAN AND FREE OF PAINT OR DIRT**.

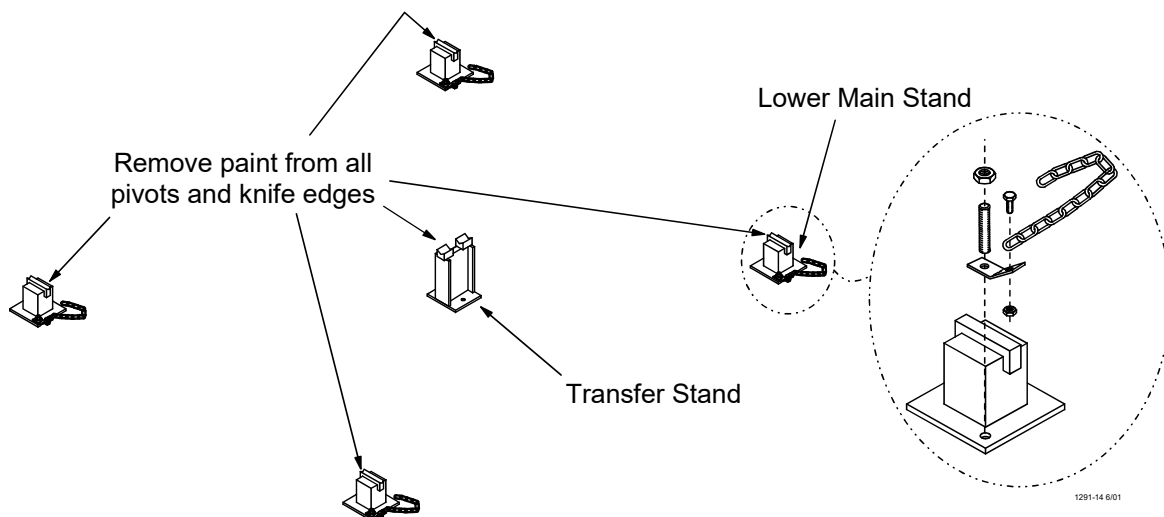


Figure 10. Placing the stands over the drilled holes and bolting in place

3. Attach the Legs and Leg Supports to the Beam Box. Anchor the Beam Box in place on the bin pad. See **Figure 11**.

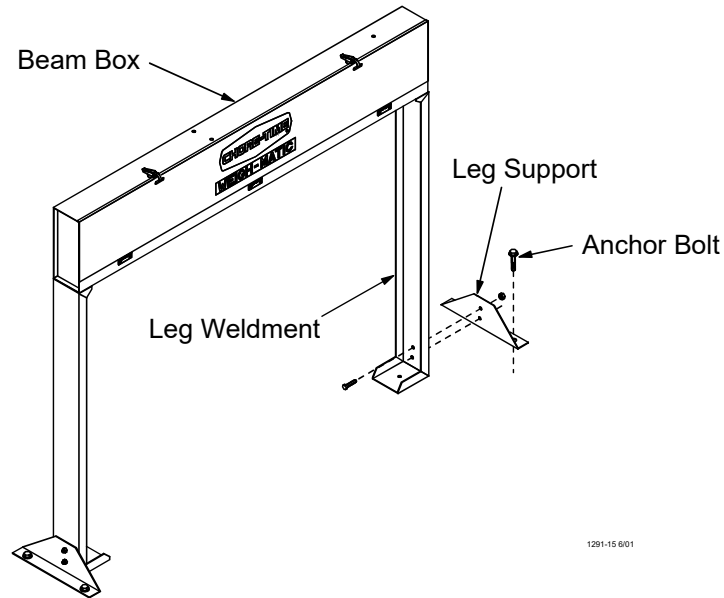


Figure 11. Attaching the Legs and Leg Supports to the Beam Box

4. Mount the 5789 Magnetic Actuator on the end of the Weighbeam using the two #4-40 x 3/4" Round Head Screws provided. See **Figure 12**.

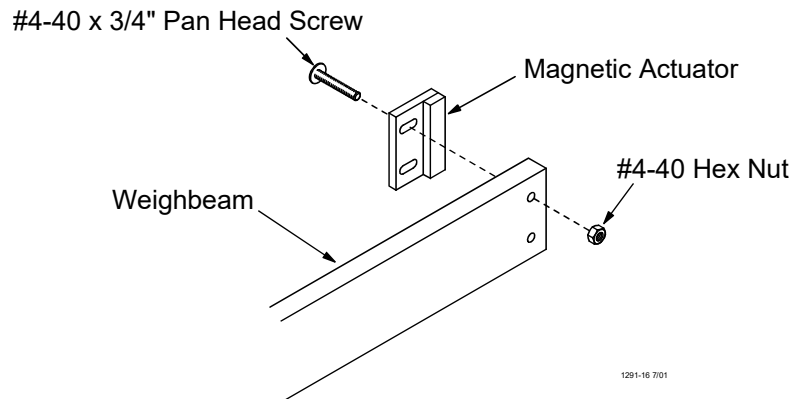


Figure 12. Mounting the Magnetic Actuator on the end of the Weighbeam

5. Install the Weighbeam Assembly in the Beam Box. Attach as shown in **Figure 12**.

BE CAREFUL NOT TO BUMP OR DAMAGE THE MAGNETIC ACTUATOR OR THE TWO PROXIMITY SENSORS WHEN INSTALLING THE WEIGHBEAM.

6. Adjust the two proximity sensors to give 1/8 inch [3.1 mm] clearance between them and the magnetic actuator on the Weighbeam. These adjustments provide a starting point for balancing the scale and protect the switching components during scale assembly.

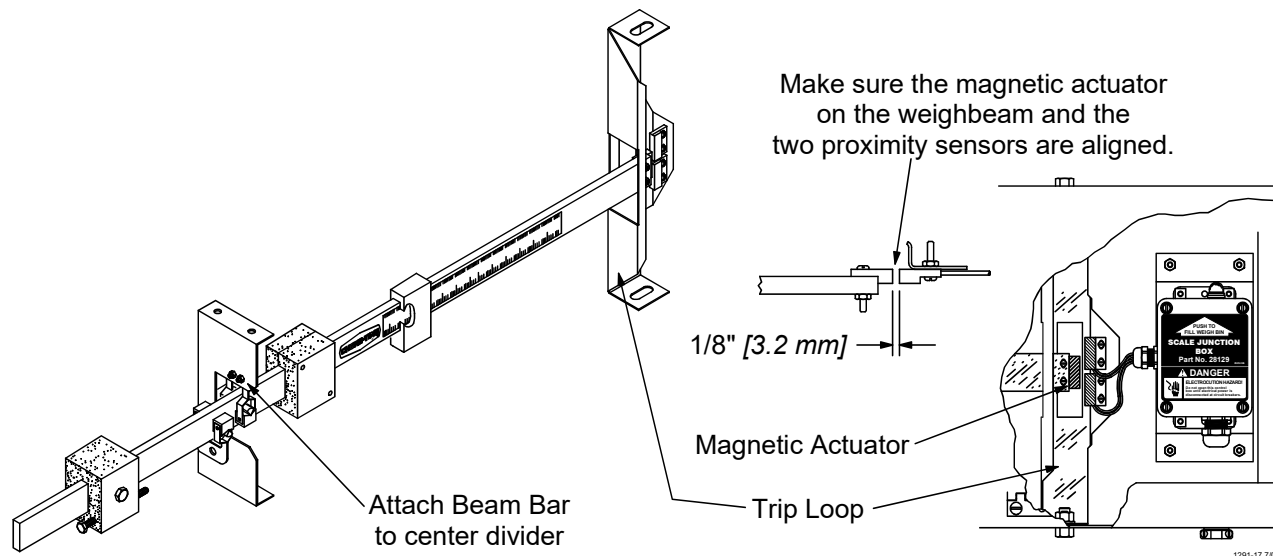


Figure 12. Installing the Weighbeam into the Beam Box

7. Attach the Shackle to the Transverse Lever. See **Figure 9**. Rest the Fulcrum Pivot of the Transverse Lever on the bearings of the Transverse Stand.

IMPORTANT Check the Weighbeam Assembly carefully following installation. Beam must pivot freely for proper operation of the scale.

8. The Back Balance (counterweight) may be installed at this time or any time before the scale is to be balanced.
9. Hook the Steelyard Rod to the Trip Loop of the Transverse Lever and connect the other end of the rod to the Loop Assembly on the Weighbeam. **Adjust the turnbuckle so that the Transverse Lever is level.** See **Figure 9**.

IMPORTANT: Tip Pivots should be positioned directly above one another. Shift Lower Main Stands as necessary to accomplish this.

IMPORTANT: Check Weigh Beam Assembly carefully following installation. Beam must pivot freely for proper operation of the scale.

10. Install the Right and Left Main Levers with their Fulcrum pivots on the bearings of the Lower Main Stands. The Main Lever's Tip Pivots rest directly above each other in the shackle. See **Figure 14 and 15.**

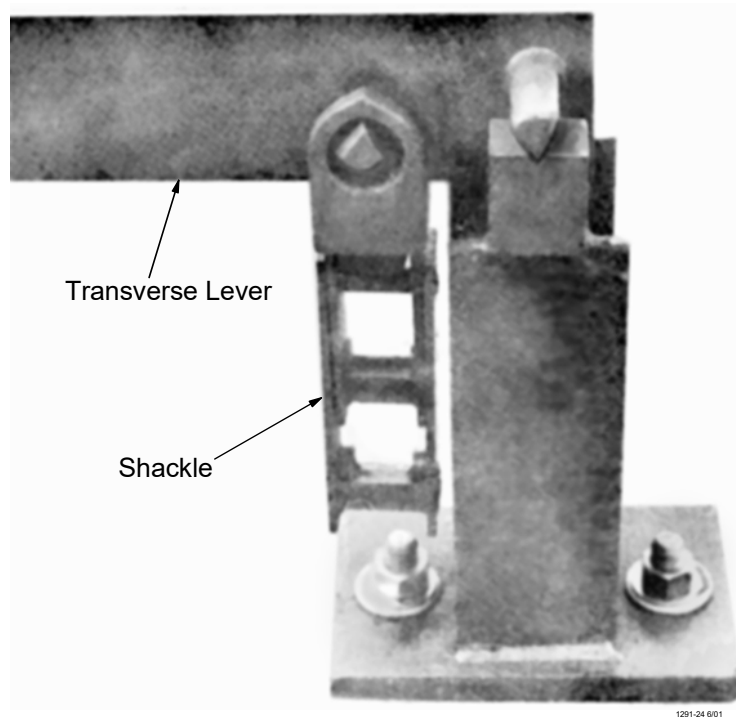


Figure 14. Transverse Level Assembly with the Shackle on the Transverse Stand Assembly

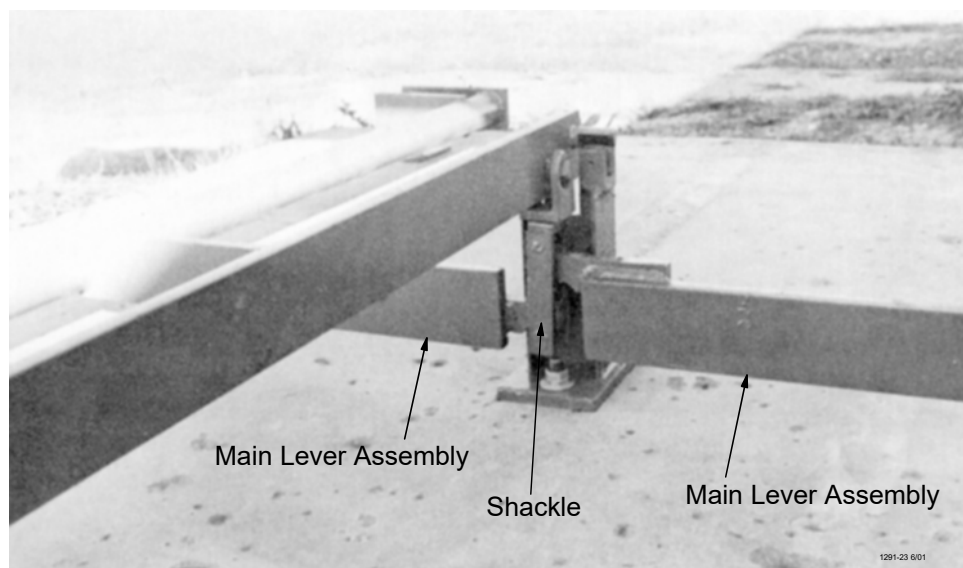


Figure 15. Installing the Left and Right Main Lever Assemblies to the Shackle

11. Install upper main stands on the load pivots of the main levers. Place the four channel pieces over the upper main stands as shown in **Figures 13 and 16**. Do not stand on the channel.
12. Check all bearing points to be sure the bearings are centered with the pivots. **The steelyard rod must be plumb and the transverse lever must be level.**

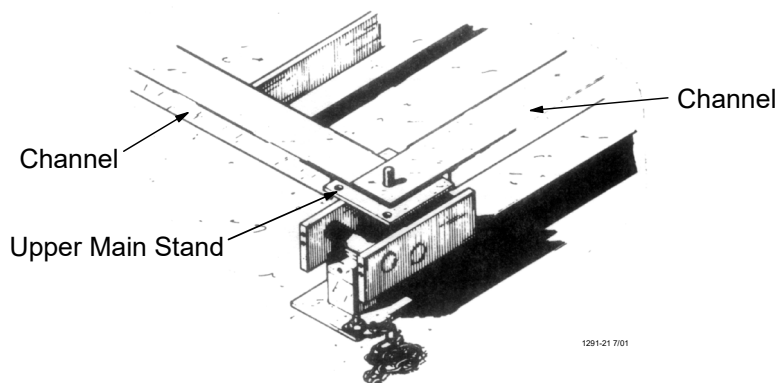


Figure 16. Channel pieces placed over the Upper Main Stands

Feed Bin Installation

1. Assemble the 6 foot [1.8 m] diameter bin according to instructions packed with the bin. Follow the recommendations carefully.
2. Raise the bin onto the Main Stands of the Scale. Use the Leg Anchor Plates provided with the bin plus a 5/8" [15.9 mm] heavy washer at each leg to secure the bin to the Main Stands. Attach the Safety Chain to the Upper Main Stand at each leg. See **Figure 17**.

NOTE: The Safety Chain should not be tight.

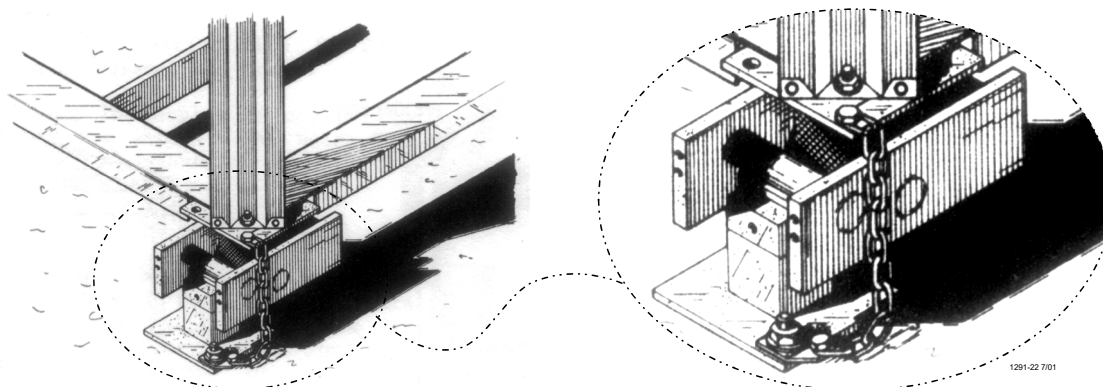


Figure 17. Securing the Weigh Bin to the Main Stand

Installation of the Flex-Auger Feed Delivery System

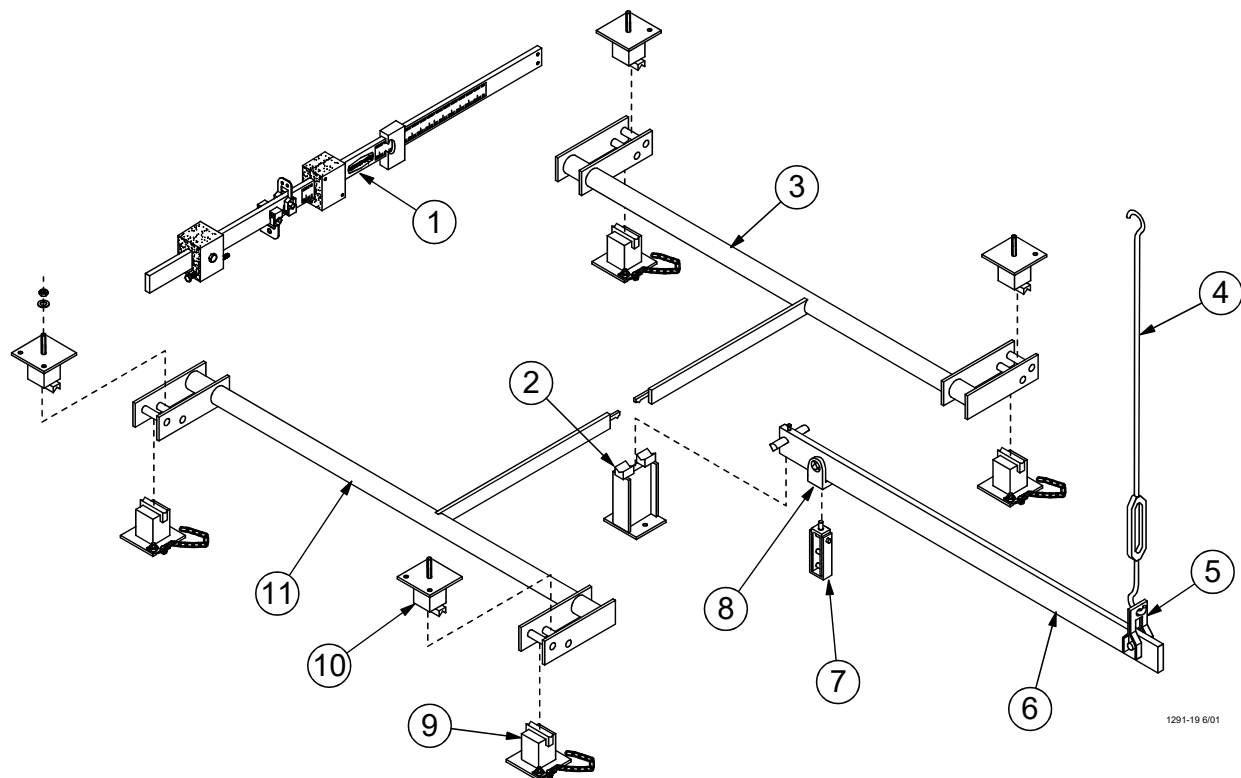
Note: See the flex-auger operator's manual (part number MA1000) packed with the flex-auger for more detailed installation information.

1. Install a 30 degree FLEX-AUGER boot on the storage bin.
2. Mount the WEIGH-MATIC Screener or Bin Fill Cap Kit on the Weigh Bin.
Refer to the WEIGH-MATIC Screener Installation Instruction (part number MF1690).
Refer to the Bin Fill Cap Kit Installation Instruction (part number MA1038).
3. Install the auger tubes between the storage bin and weigh bin.
4. Use chain or cable to support the Auger Tube to prevent sagging auger tubes.

Parts Listing

Repair Parts for WEIGH-MATIC Scales

8000 lb [3629 kg] Beam Shown



1291-19 6/01

Item	Description	Part No.
1	Beam Assembly: 5000 lb [2286 kg] 8000 lb [3629 kg]	46086 46085
2	Transverse Stand Assembly	46084
3	Right Main Lever Assembly	46078
4	Steelyard Rod Assembly	46079
5	Trip Loop	46080
6	Transverse Lever Assembly	46081
7	Shackle	46082
8	Load Loop	46083
9	Lower Main Stand Assembly	46075
10	Upper Main Stand Assembly	46076
11	Left Main Lever Assembly	46077

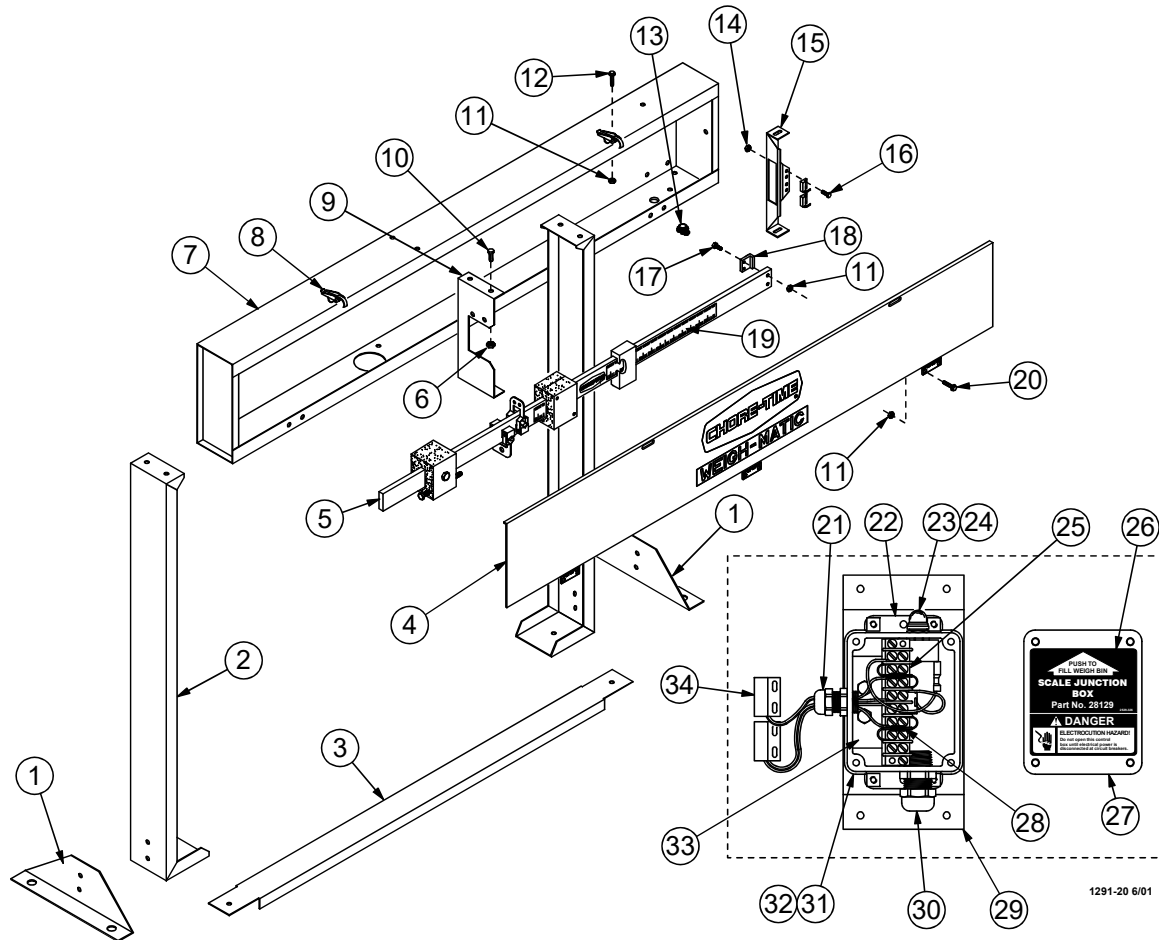
A 5000 lb [2286 kg] Bin Scale Assembly without Beam Box may be ordered under Part Number 46050.

A 8000 lb [3629 kg] Bin Scale Assembly without Beam Box may be ordered under Part Number 46055.

A 5000 lb [2286 kg] Bin Scale Assembly with Beam Box may be ordered under Part Number 46044.

A 8000 lb [3629 kg] Bin Scale Assembly with Beam Box may be ordered under Part Number 46054.

Beam Box Assembly Part Number 5790



Item	Description	Part No.
1	Leg Support	5924
2	Leg Weldment	5793
3	Channel	7589
4	Cover Weldment	5799
5	Weighbeam Assembly 5000 lb [2286 kg] 8000 lb [3629 kg]	46086 46085
6	3/8-16 Hex Nut	1549
7	Case Weldment	5797
8	Over Center Clamp	2536
9	Pivot Bracket	5803
10	3/8-16 x 3/4\" Hex Head Cap Screw	2182
11	#10-24 Nut	135
12	#10-24 x 3/8\" Round Head Machine Screw	
13	Romex Connector	1317
14	#4-40 Hex Nut	3511
15	Trig Loop	7472
16	#4-40 x 5/8\" Round Head Machine Screw	3510
17	#4-40 x 3/4\" Round Head Machine Screw	4143-2

Item	Description	Part No.
18	Magnetic Actuator	5789
19	Beam Bar Decal 5000 lb [2286 kg] 8000 lb [3629 kg]	46679 46680
20	#10-24 x 3/8\" Truss Head Screw	501
21	Liquid Tight Connector	13477
22	Mounting Cover	6956
23	Momentary Switch	5785
24	Push Button Boot	20784
25	Terminal Block	7270
26	Terminal Box Decal	2529-326
27	Switch Box Cover	6776
28	390 ohm Resistor	1709-19
29	Switch Mount Bracket	28247
30	Water Tight Connector	23779
31	Terminal Mount Box	28597
32	Gasket	6777
33	Terminal Mount	28599
34	Proximity Sensor	6689



**Made to work.
Built to last.**

Revisions to this Manual

Page No.	Description of Change	ECO
2	Updated Warranty	34561
1,18	Updated Contact Info Was 20 pages.	

Contact your nearby Chore-Time distributor or representative for additional parts and information.

Chore-Time Group
A division of CTB, Inc.
PO Box 2000
Milford, Indiana 46542-2000 USA
Phone (574) 658-4101 Fax (877) 730-8825
E-mail: poultry@choretime.com
Internet: www.choretimepoultry.com