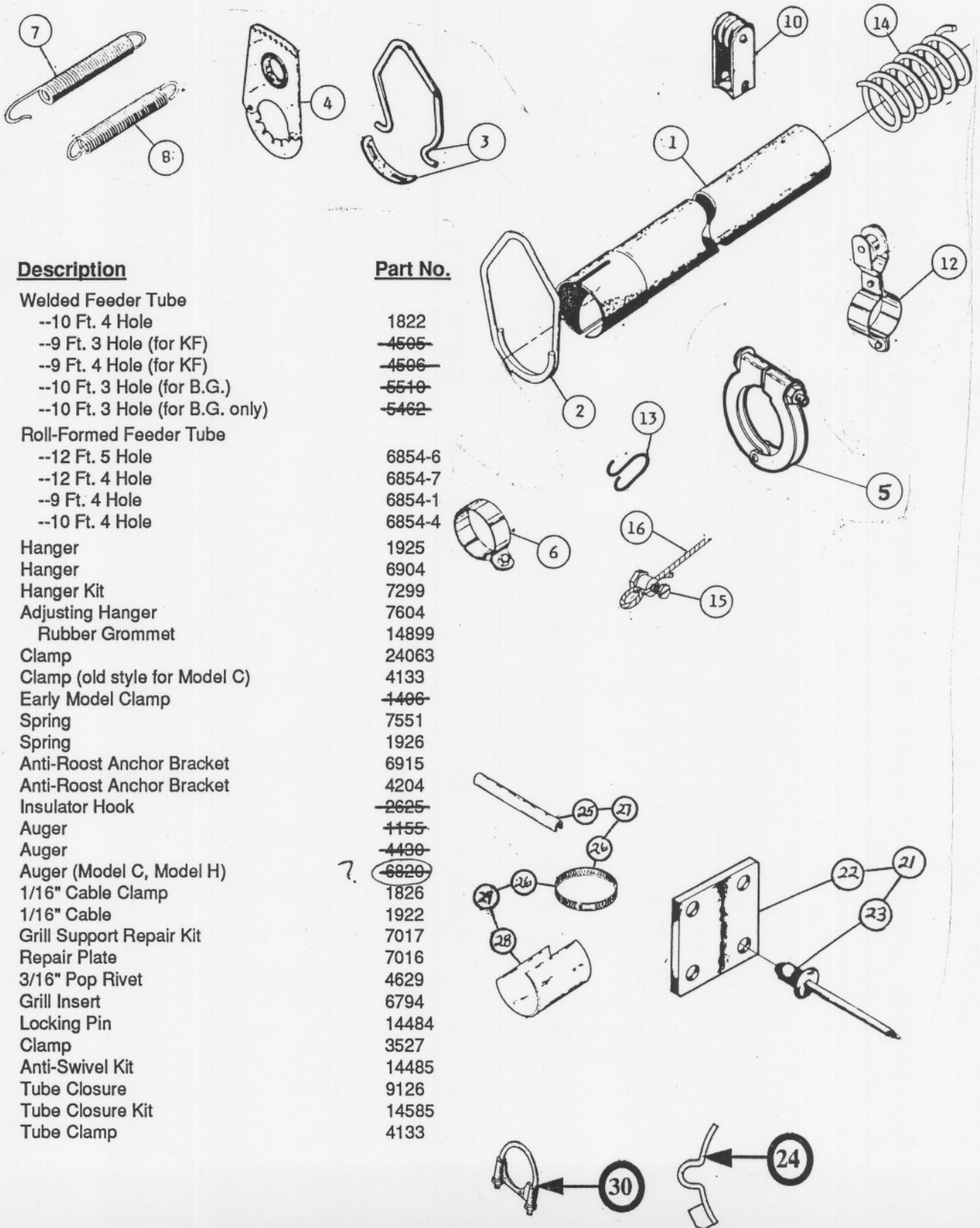


FLOOR FEEDER LINE COMPONENTS

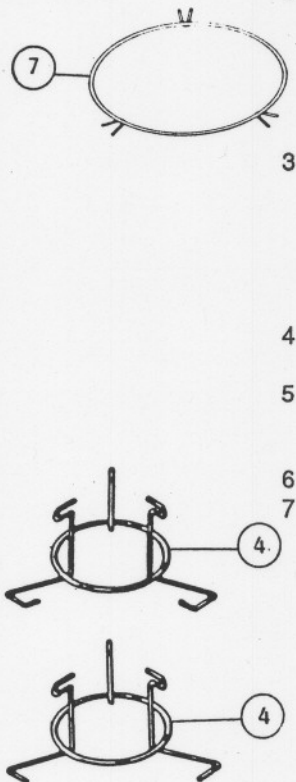
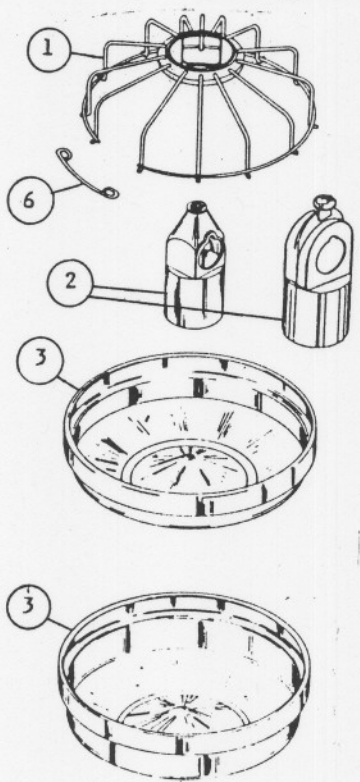
Model C, CT, KF, Super C, Model 2000, Model H, and Model H2 Line Components



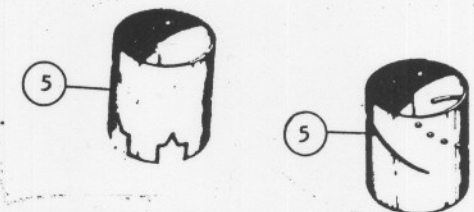
Item	Description	Part No.
1	Welded Feeder Tube --10 Ft. 4 Hole --9 Ft. 3 Hole (for KF) --9 Ft. 4 Hole (for KF) --10 Ft. 3 Hole (for B.G.) --10 Ft. 3 Hole (for B.G. only)	1822 4505 4506 5510 5462
	Roll-Formed Feeder Tube --12 Ft. 5 Hole --12 Ft. 4 Hole --9 Ft. 4 Hole --10 Ft. 4 Hole	6854-6 6854-7 6854-1 6854-4
2	Hanger	1925
	Hanger	6904
3	Hanger Kit	7299
4	Adjusting Hanger Rubber Grommet	7604 14899
5	Clamp Clamp (old style for Model C)	24063 4133
6	Early Model Clamp	1406
7	Spring	7551
8	Spring	1926
10	Anti-Roost Anchor Bracket	6915
12	Anti-Roost Anchor Bracket	4204
13	Insulator Hook	2625
14	Auger Auger	1155 4490
	Auger (Model C, Model H)	6820
15	1/16" Cable Clamp	1826
16	1/16" Cable	1922
21	Grill Support Repair Kit	7017
22	Repair Plate	7016
23	3/16" Pop Rivet	4629
24	Grill Insert	6794
25	Locking Pin	14484
26	Clamp	3527
27	Anti-Swivel Kit	14485
28	Tube Closure	9126
29	Tube Closure Kit	14585
30	Tube Clamp	4133

FLOOR FEEDER LINE COMPONENTS

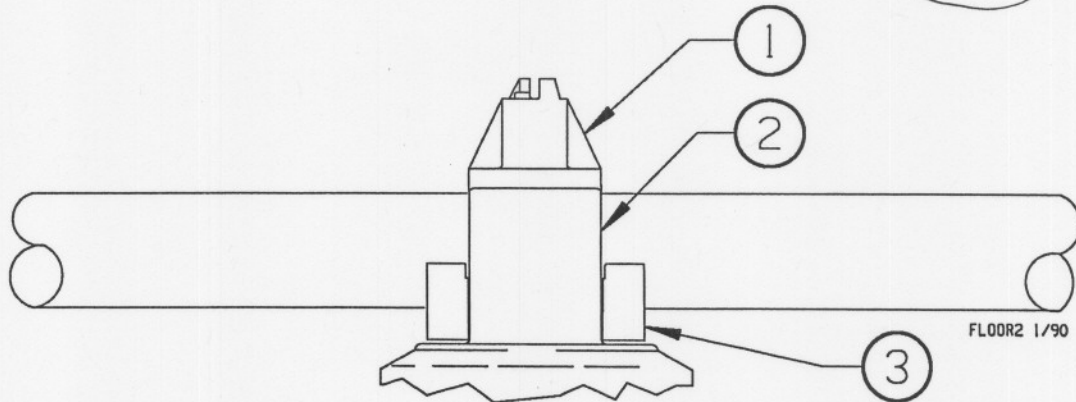
Model C, CT, Pan Breeder Feeder, KF, and Super C Pan Components



Item	Description	Part No.
1	Grill (prior to 1971)	2116
	Grill (1971 to 1980)	4284
	Grill (1980 to present)	6906
2	Grill Support (prior to 1971)	2117
	Grill Support (1971 to 1980)	4280
	Grill Support (nylon model)	4280N
	Grill Support (1980 to present)	6461
	Grill Support Repair Kit	7017
	Locking Grill (see section below)	25050
	Shallow "V" Bottom Pan	2510
3	Deep "V" Bottom Pan	2511
	Red Plastic Pan	7700
	Shallow Flat Bottom Pan	1655
	Deep Flat Bottom Pan	1654
	Red Epoxy Flat Bottom Pan	8892
4	Feed Level Ring (prior to 1982)	2509
	Feed Level Ring (1982 to present)	8171
5	Feed Level Tube	2508
	PVC Feed Level Tube	8790
	Feed Level Tube for turkeys	4329
6	Grill Lock	3294
7	Feed Saver Ring	4568
	Feed Saver Ring (B.G. Feeder)	5522



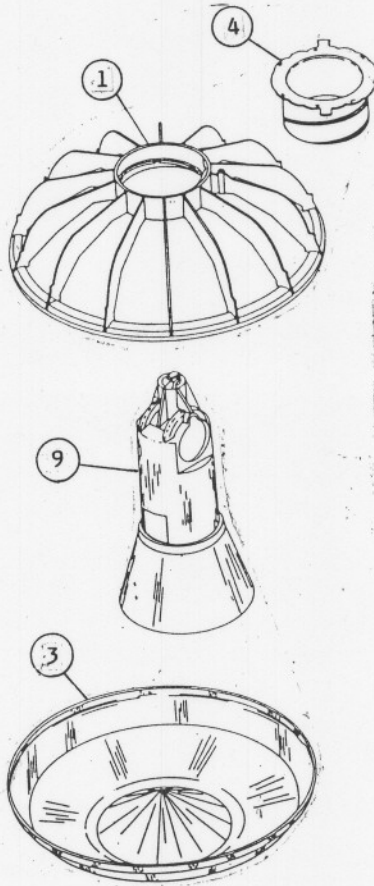
Model C Locking Grill Support Kit: Part No. 25050 Model C Repair Grill Support Kit: Part No. 25051



Item	Description	Part No.
1	Grill Support	25051
2	Support Cap	25052
3	Support Insert (locking)	25053
		25054

FLOOR FEEDER LINE COMPONENTS

Model 2000 Pan Components



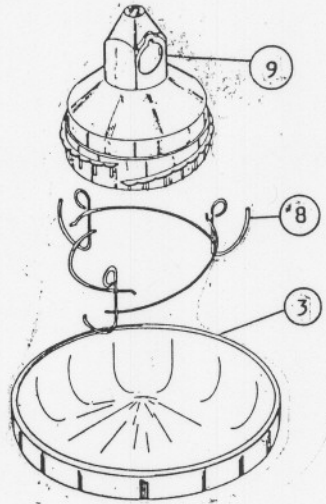
<u>Item</u>	<u>Description</u>	<u>Part No.</u>
1	Feeder Grill	7730
	Feeder Grill Model 2000C (split ring grill)	14150
3	Red Plastic Pan	7729
	Deep Plastic Pan	24000
	Shallow "V" Bottom Pan (for use w/14150)	7700
4	Feed Level Ring	7728
9	Feed Cone (1983 to present)	7731
	Feed Cone for Field Repair Only	14949

FLOOR FEEDER LINE COMPONENTS

Model H Pan Components

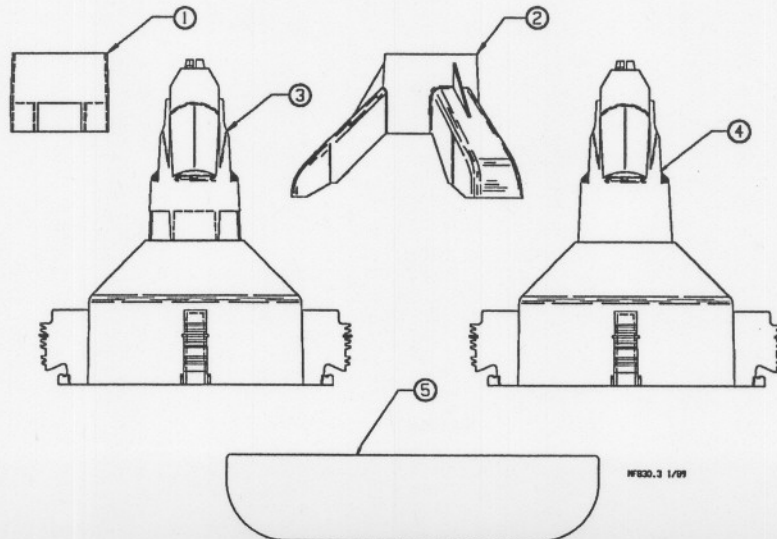
<u>Item</u>	<u>Description</u>	<u>Part No.</u>
3	Shallow "V" Bottom Pan	5831
8	Pan Support Wire (prior to 1980)	5807
	Pan Support Wire (1980 to present)	6979
9	Feed Cone	5120

A Support Cone Repair Kit, consisting of (10) 7016 Repair Plates and (40) 3/16" Short Pop Rivets (for repairing 10 units), may be ordered under Chore-Time Part No. 7017.



H2 Feeder Components

<u>Item</u>	<u>Description</u>	<u>Part No.</u>
1	Flood Collar	25360
2	Feed Chute	25320
3	Cone with Feed Windows	24900-2
4	Cone w/o Feed Windows	24900-1
5	H2 Feeder Pan	24901



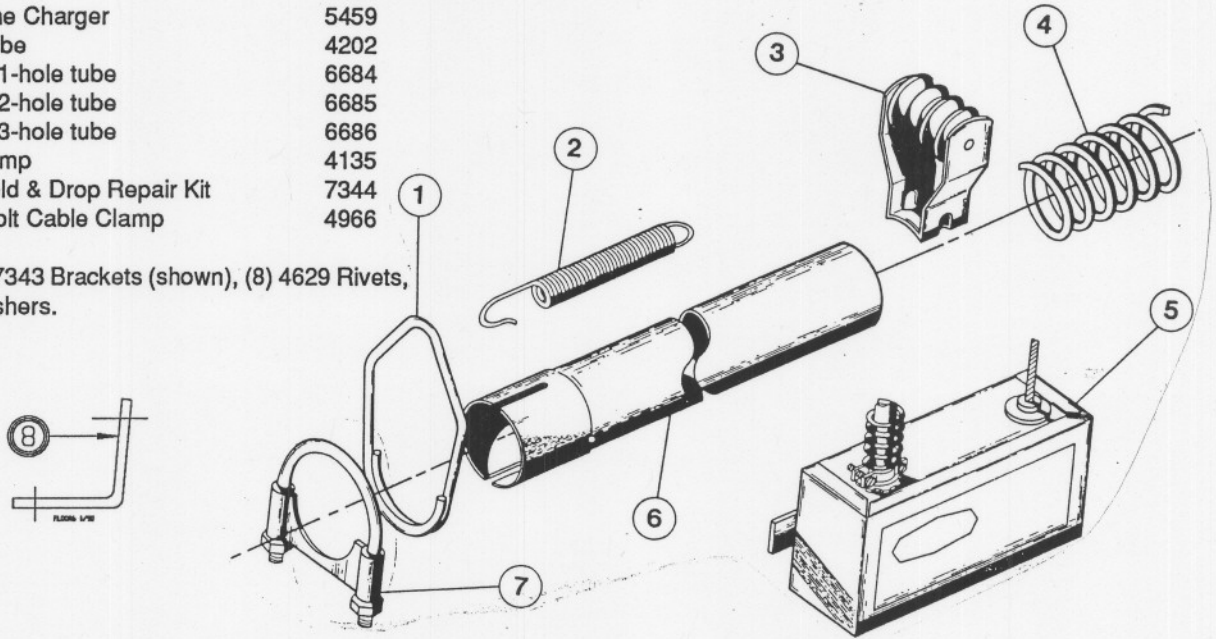
WESCO 3 1/99

FLOOR FEEDER LINE COMPONENTS

Adult Turkey Feeder Line Components

Item	Description	Part No.
1	Hanger	4207
2	Spring	7551
3	Anti-Roost Bracket	7552
4	Auger	6820 -02
	Auger	4496
5	230V. Line Charger	5459
6	Auger Tube	4202
	Optional 1-hole tube	6684
	Optional 2-hole tube	6685
	Optional 3-hole tube	6686
7	Tube Clamp	4135
8*	ATF Shield & Drop Repair Kit	7344
not shown	Split Bolt Cable Clamp	4966

*7344 Includes (2) 7343 Brackets (shown), (8) 4629 Rivets, & (4) 149 Flat Washers.



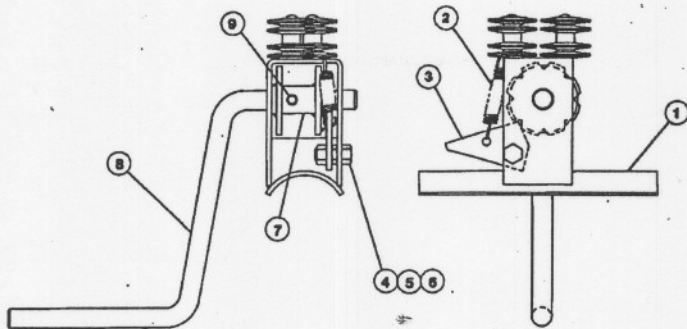
Pan Components

Item	Description	Part No.
1	Drive Rivet	4200
2	Pan Shield	4192
3	Insulator (1974-1976)	5399
	Insulator (late version shown)	5754
4	Drop Tube Assembly (early version)	4210
	(to repair 12 insul. on early version Drop Tube)	6019
	Drop Tube Assembly (late version shown)	4806
5	Drop Tube (early version)	4210
	Drop Tube (late version shown)	5758
6	Pan Shield Support	6443
7	Feed Level Tube	4494
8	Feed Level Ring	4196
9	Adult Turkey Feeder Pan	4193
	Optional Stage II Pan	6597
10	Pan Support	4199
11	Swing Down Pan Support	24274
12	Optional PVC Feed Level Tube	14280
--	Tube Guides (Not Shown)	24113

Early Version: 1970 to 1976
Late Version: 1976 to present

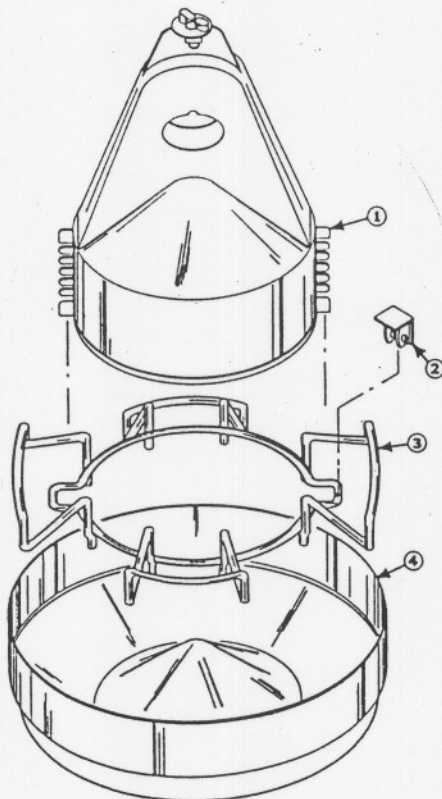
FLOOR FEEDER LINE COMPONENTS

14680-Feed Tube Winch (for use with Adult Turkey Feeder)



<u>Item</u>	<u>Description</u>	<u>Part No.</u>
1	Ratchet Body	14675
2	Spring	1543
3	Stop	14677
4	1/4-20x.62 Bolt	2152
5	1/4-20 Locknut	1269
6	1/4-20 Jam Nut	20826
7	Drum	14678
8	Crank	14877
9	Spring Pin	14881-1
--	Cable Assembly (Not Shown)	14278
--	Tube Clamp (Not Shown)	4135
--	1/8" Cable Clamp (Not Shown)	14898
--	3/32" Galvanized Cable (Not Shown)	4973
--	Stainless Steel Cable (Not Shown)	7130

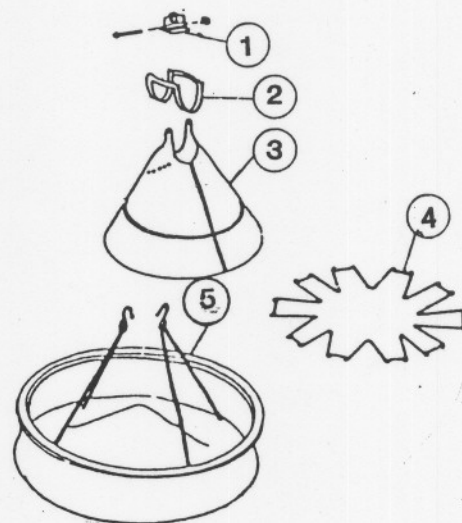
Monline



<u>KEY</u>	<u>DESCRIPTION</u>	<u>PART NO.</u>
1	Cone assembly	2987
2	Lock	2991
3	Pan Support Assembly	2988
4	"V" Bottom Pan	2510
	Deep "V" Bottom Pan	2511

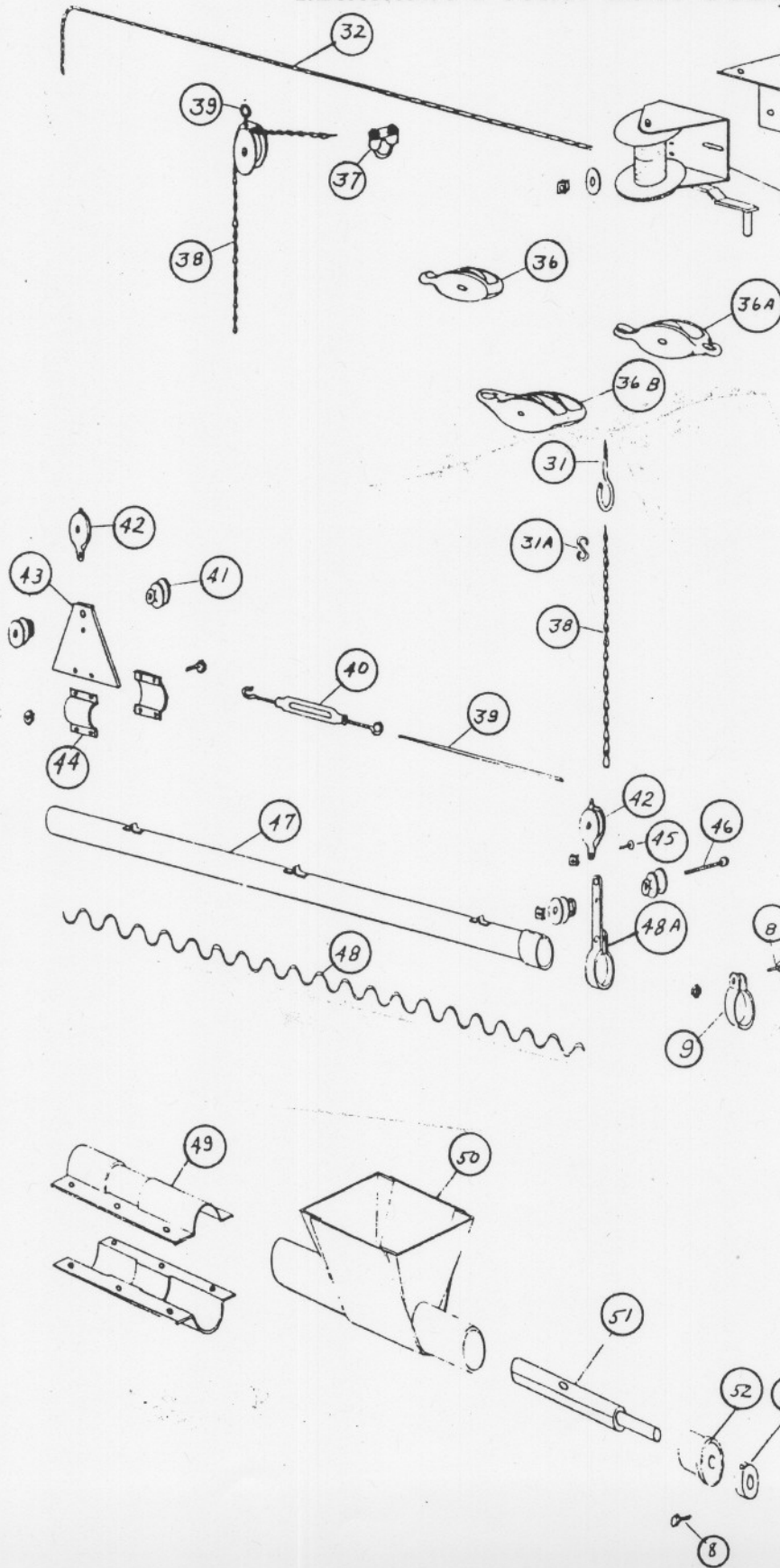
Multiline

<u>KEY</u>	<u>DESCRIPTION</u>	<u>PART NO.</u>
1	Insulator Assembly (includes 1906)	2350
2	Saddle	2330
3	Cone	2354
4	Feed Saver Guard	2355
5	Monoline Pan	2351
	Shallow Monoline Pan	2352



FLOOR FEEDER LINE COMPONENTS

Multiline Feeder Line Components



WINCH SUSPENSION

REF. PART QUAN. DESCRIPTION
NO. NO.

31	1214	A.R.	#4 Screw Hook
32	1213	"	3/16 Aircraft Cable
33	1193	1	Winch Mounting Bracket
34		4	5/16-18 x 1 1/4 Bolt, Flat Washer & Nut
35	1212	1	H.D. Winch
36	742	A.R.	Cast Pulley
36A	1220	"	Double Eye Pulley
36B	1292	"	Double Pulley
37	732	"	Cable Clamp
38	1302	"	Chain
39	884	"	Pulley

CHAIN SUSPENSION & ANTI-ROOST

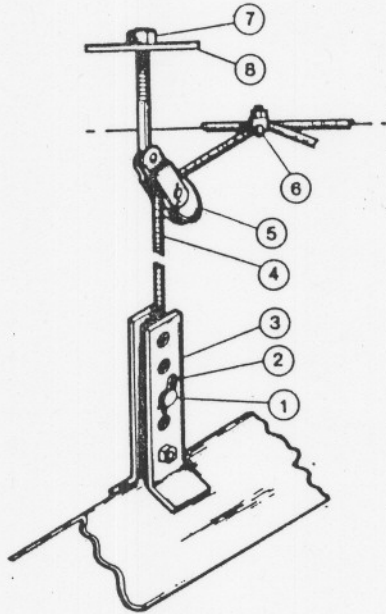
31	1214	A.R.	#4 Screw Hook
31A	723	"	S Hook
38	1302	"	Chain
39	1324	"	14Ga. Guard Wire
40	1505	"	7/32 Turnbuckle
41	814	"	Plastic Insulator
42	729	"	Chain Pulley
43	1042	"	Wire Guard Support
44	1394	"	Clamp
		4	1/4-20 x 1/2 Bolt & Nut
45		1	10-24 x 3/8 Screw & Nut
46		1	10-24 x 2 1/2 Screw & Nut
47	1149A		8 FT. Feed Tube Assembly
	1154A		Feed Tube Control End
48	1155	A.R.	Auger Flighting
48A	1390	A.R.	Hanger Strap

FEED INTAKE CUP

49	1030	2	Tube Connector
		6	1/4-20 x 1/2 Bolt & Nut
50	1000A	1	Intake Cup
51	1302	1	Anchor
52	1460	1	Anchor Bearing Ass'y
53	1386	1	Shaft Collar 5/8
9	1406	1	Tube Clamp

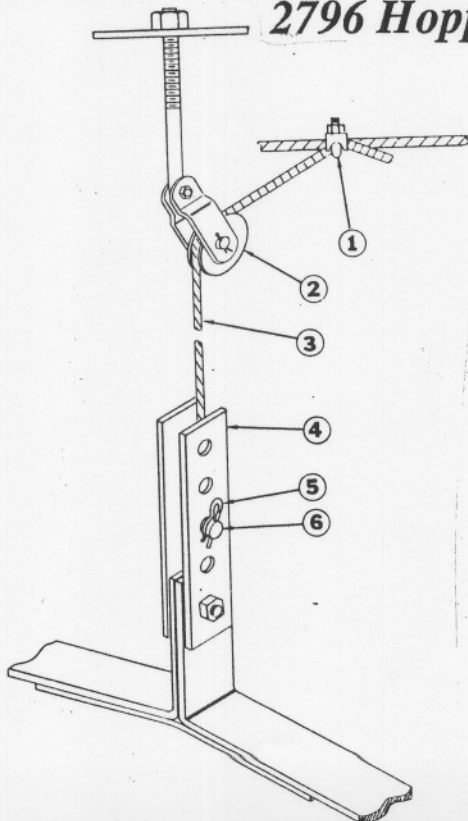
Winches and Suspension Components

7948 Hopper Suspension Kit



<u>Key</u>	<u>Description</u>	<u>Part No.</u>
1	Clevis Pin	2797-1
2	Hair Pin	2664
3	Adjustable Bracket	7938
4	1/8" Cable Assembly	2809-1
5	Pulley Assembly	7334
6	3/16" Cable Clamp	732
7	3/8-16 Hex Nut	1549
8	Foot	1586

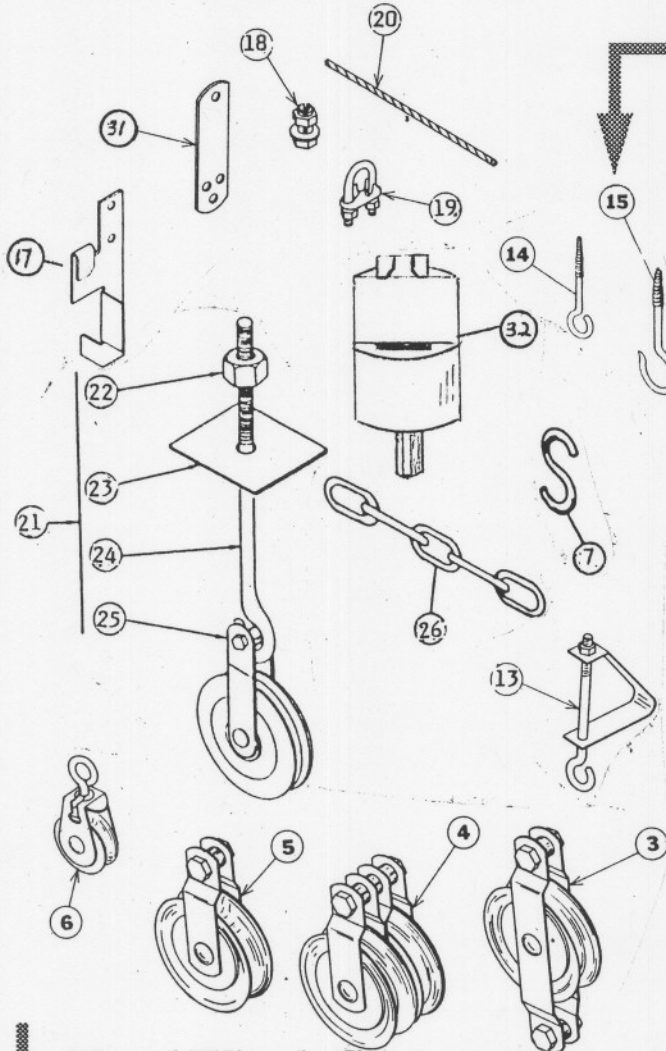
2796 Hopper Suspension Kit



<u>Key</u>	<u>Description</u>	<u>Part No.</u>
1	3/16" Cable Clamp	732
2	Master Pulley	2617
3	1/8" Master Cable Assembly	2809-1
4	Adjustment Bracket	2706
5	Hair Pin	2664
6	Clevis Pin	2797-1

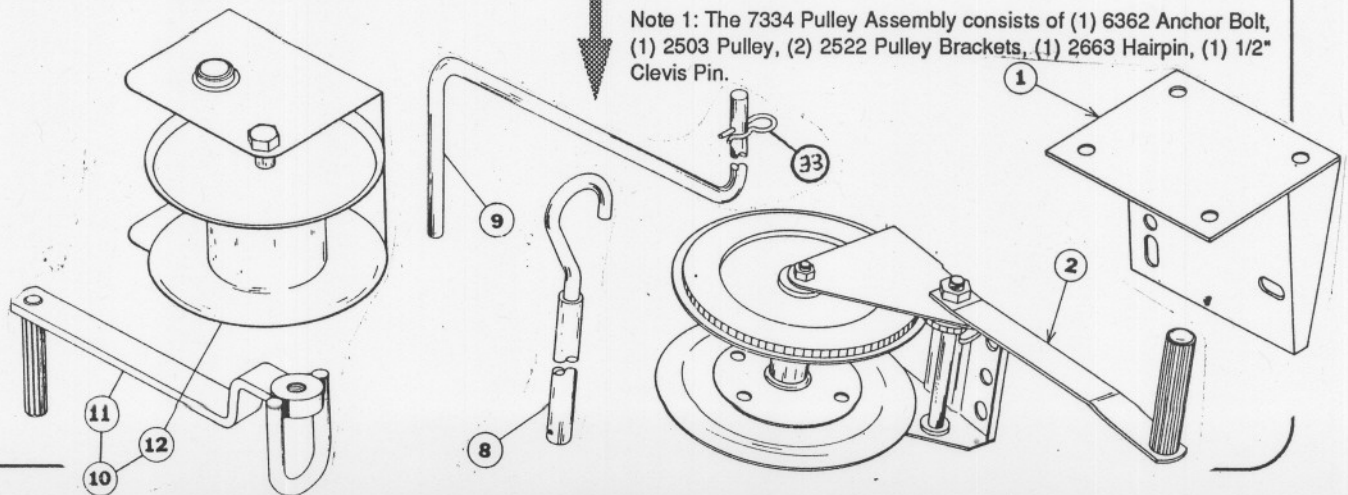
Winches and Suspension Components

Pulleys, Pulley Assemblies, and Miscellaneous Components



Item	Description	Part No.
1	Hand Winch bracket	1193
2	Hand Winch	1212
3	Double Eye Pulley	2501
4	Double Sheave Pulley	2502
5	Pulley	2500
6	Small Pulley w/Swivel	3004
7	"S" Hook (small) for floor feeders	723
	"S" Hook for Adult Turkey Feeder	2805
	"S" Hook for Control Units	4270
8	Winch Drive Tube (4' Long)	2884-1
	Winch Drive Tube (8' Long)	2884-2
9	Winch Drive Handle	2885
10	Winch for B.G. Feeder	5500
13	Truss Hanger 2"	0415-1
	Truss Hanger 2-1/2"	0415-2
	Truss Hanger 3"	0415-0
14	Screw Hook	1214
15	Screw Hook w/Large Eye	2041
17	Adjustment Leveler	14337
18	3/32" Cable Clamp	4966
19	3/16" Cable Clamp	732
	1/8" Cable Clamp	14898
20	3/32" Cable	4973
	3/16" Cable	1213
	1/8" Cable	740
21	Pulley Assembly (components 22-25)	2014
	Pulley Assembly (components, see note 1)	7334
22	1/2-13 Hex Nut	2042
23	Foot	1586
24	Anchor Bolt	2043
25	Pulley Assembly	2500
26	Large Chain	2128
	Small Chain	1302
31	Adjustment Leveler	14197
32	Short Screw Hook Driver	13150-1
	Long Screw Hook Driver	143150-2
33	Hair Pin	2664
-	Drill Adapter	2886

Hand Winch Components



Note 1: The 7334 Pulley Assembly consists of (1) 6362 Anchor Bolt, (1) 2503 Pulley, (2) 2522 Pulley Brackets, (1) 2663 Hairpin, (1) 1/2" Clevis Pin.

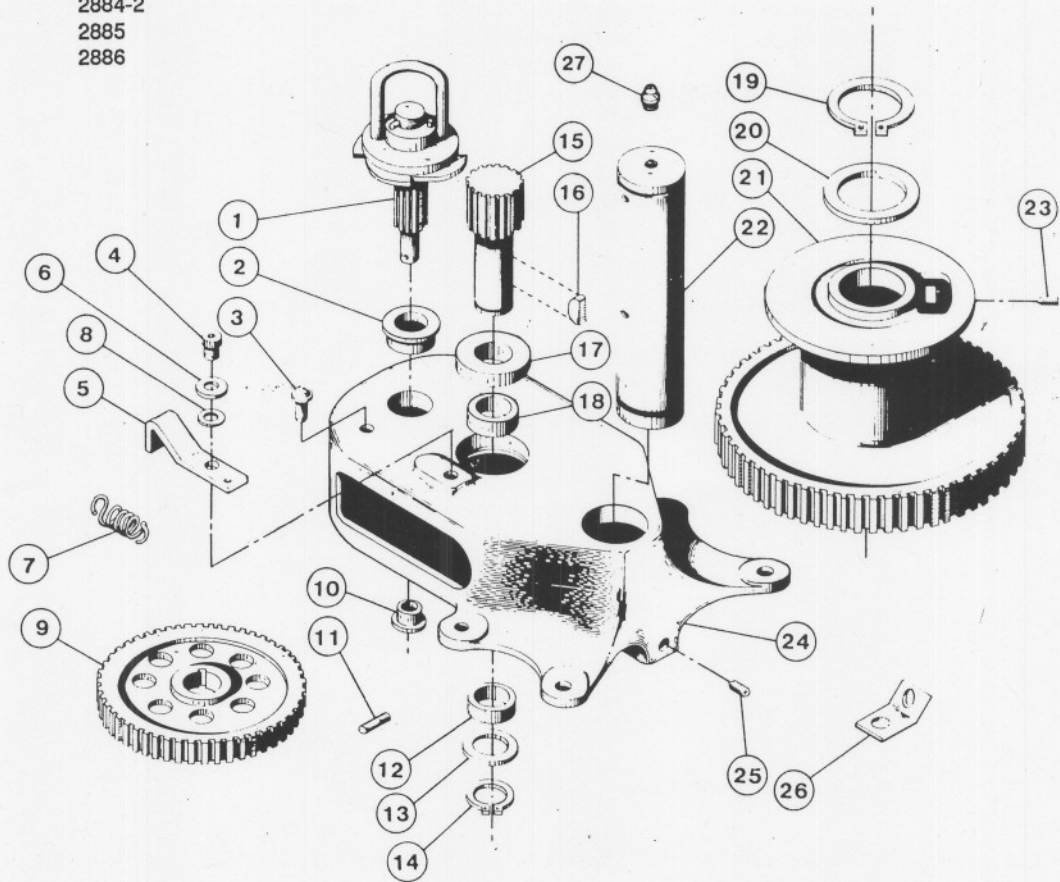
Winches and Suspension Components

2883 Power Winch

Item	Description	Part No.	Item	Description	Part No.
1	Input Shaft Assembly (Heavy Duty)	14885	14	Retaining Ring	2958-1
	Input Shaft Assembly (Light Duty)	2956	15	Drive Pinion	2962
2	Flange Bushing	2967-2	16	Woodruff Key	2959
3	Drive Stud	4128-1	17	1" Bearing	4937
4	Shoulder Bolt	4022-2	18	Spacer	4936
5	Pawl	6672	19	Retaining Ring	3556
6	Spring Washer	4023	20	Washer	2955-2
7	Spring	1543	21	Winch Drum	3723
8	5/16" Flat Washer	546	22	Drum Shaft	3637
9	Intermediate Gear	2890	23	Setscrew	603
10	Flange Bushing	3252	24	Winch Frame	3719
11	Spirol Pin	2960-3	25	Setscrew	3727
12	Bushing	2967-4	26	Cable Hook	2985
13	Washer	2955-1	27	Grease Zerk	6021

NOT SHOWN:

Description	Part No.
4 Foot Drive Tube	2884-1
8 Foot Drive Tube	2884-2
Drive Handle	2885
Drill Adapter	2886



920-60

Winches and Suspension Components

14580 Electric Power Lift

Key	Description	Part No.
1	Power Unit	3259-7
2	5/16-18x3/4 Hex Head Screw	2046
	5/16 Flat Washer	2230
3	1/4-20 Locknut	1269
4	Power Winch	2883
5	5/16 Washer	2230
6	5/16-18 Hex Nut	2148
7	5/16-18x2-1/2 Hex Head Bolt	2753
8	3/8-16x1 Hex Head Bolt	2555
9	3/8 Washer	4967
10	3/8 Patch Lock Nut	2183
11	5/16-18x3/4 Hex Head Bolt	2046
12	5/16 Locknut	2148
13	Input Shaft Assembly	14885
14	1/4-20x1-1/2 Socket Head Screw	5083-8
15	Universal Joint	14584
16	Power Unit Bracket	14587
17	Winch Bracket	24401
-	Switch Box Assembly	14613

The entire assembly may be ordered under part no. 14580 Electric Power Winch Kit.

The entire assembly, except item no. 4, may be ordered under part no. 14560 Electric Winch Kit.

The entire assembly, except items no. 1 and 4, may be ordered under part no. 24508 Power Lift Parts Kit.

