



## SENSOR PLUS™ Update Kit

for:

C2, C2 Plus, G, G Plus,

Part Number's:

49356-1 Standard, 49356-2 Shallow

### Introduction

The SENSOR PLUS Update Kit is intended to show how to change a probe Switch to a SENSOR PLUS Switch on a C2 Plus, or G Plus, Floor Feeding End Control. This instruction shows a SENSOR PLUS Update Kit being installed on a C2 Plus End Control but the G Plus assemblies are similar.

### Installation

1. **Turn off the power at the Circuit Breaker Box!** Remove the Switch Box Cover (item 3). Disconnect the Power Cord (item 1) wires from inside the Switch box. Remove the Water Tight Connector (item 2) from the Switch Box. Remove the Control Pan Assembly (item 4) from the Feeder Line.

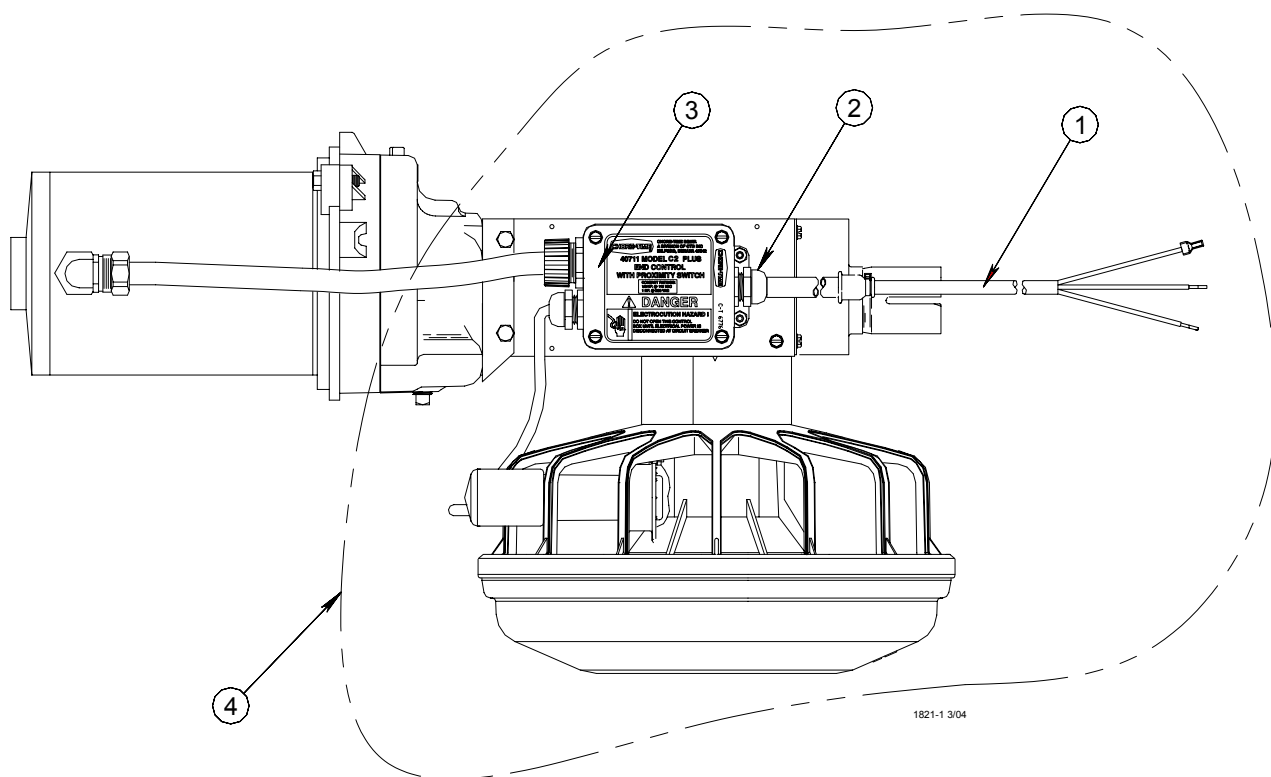
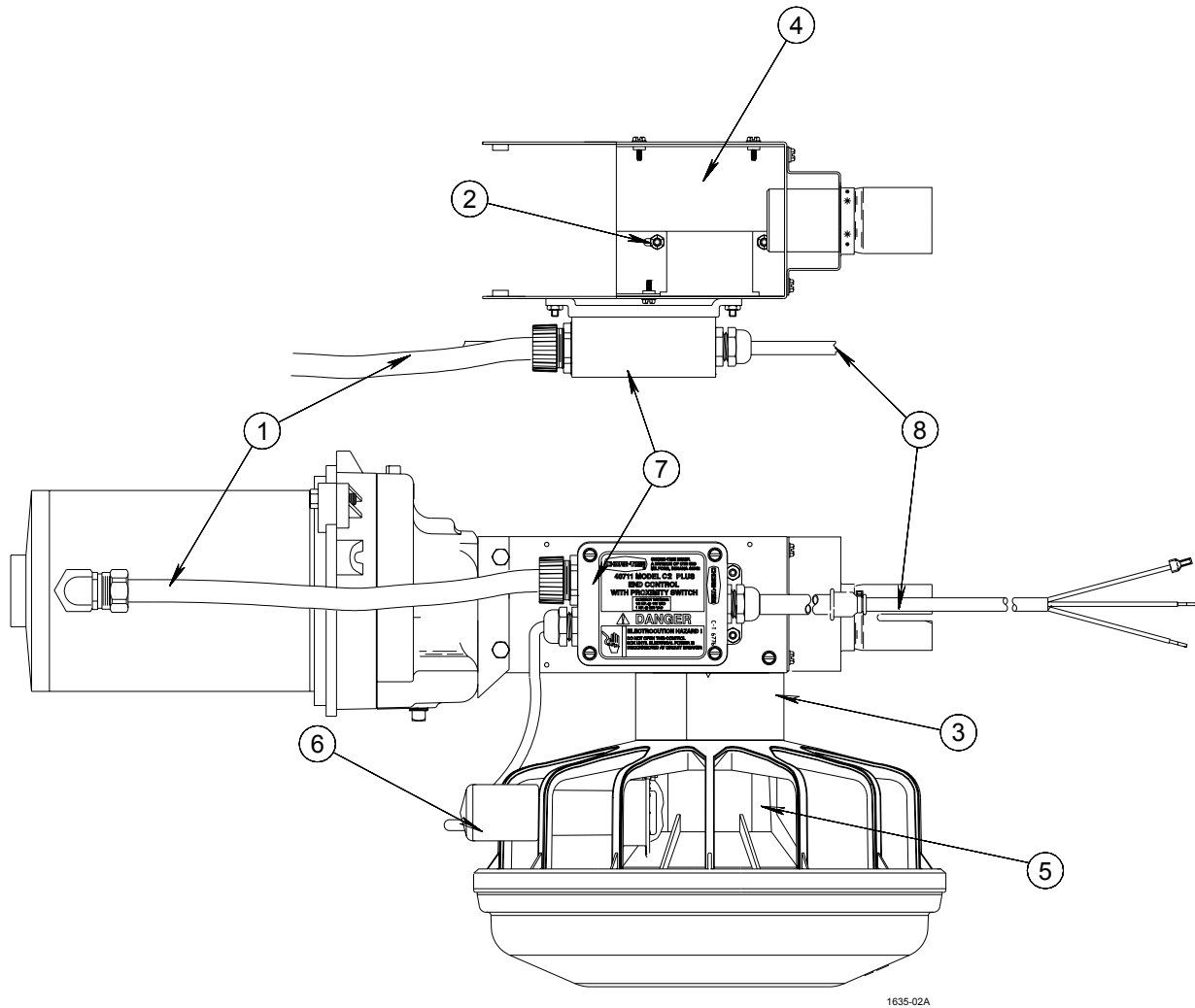


Figure 1. The Control Pan Assembly

Item	Description
1	Power Cord
2	Water Tight Connector
3	Switch Box Cover
4	Control Pan Assembly

2. Disconnect the existing wires from the motor and remove the wires and Flex Conduit (item 1) from the motor.
3. Remove the Switch Box Assembly and Switch Box Mount (item 7) from the Control Head as shown.
4. Remove the probe from feed cone (item 6) as shown.
5. Remove the Deflector Panel (item 4) from the Control Head.
6. Remove the Cone/Pan Assembly (item 5) from the bottom of the Control Head.
7. Remove the white spacer from cone assembly (item 3).

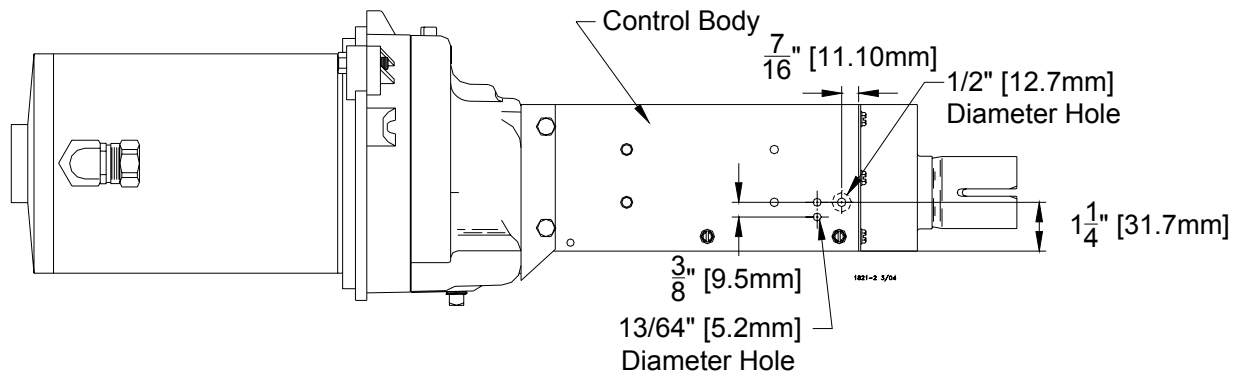


**Figure 2. Disassembling the Control Pan Assembly**

Item	Description
1	Flex Conduit
2	Lock nut
3	Spacer
4	Deflector Panel
5	Feed cone

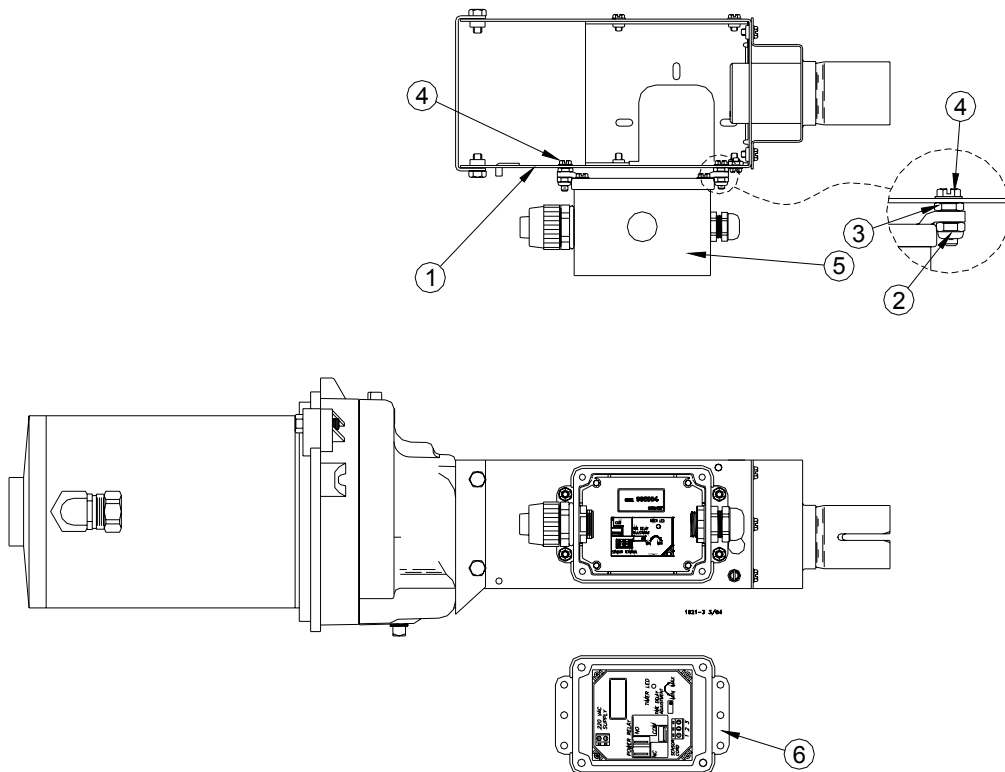
Item	Description
6	Probe switch
7	Switch Box Assembly
8	Power Cord

8. Locate and drill the two 13/64" holes. Next locate and drill the 1/2" hole, See **Figure 3**.



**Figure 3. Drilling the Control Body and Switch Box Mount**

9. Attach the new switch Box Assembly (item 5) to the control body (item 1) as shown using the included #10-24 x 3/4" Hex Head Machine Screws (item 4) and #10-24 Nylon Insert Hex Head Lock (item 2).



**Figure 4. Reassembling the Switch Box Mount to the Control Body**

Item	Description
1	Control Body
2	#10-24 Nylon Insert Hex Lock Nut
3	#10-24 Hex Nut
4	#10-24 x 5/8" Hex Head Machine Screw

Item	Description
5	Switch Box Assembly
6	Switch Box Mount

10. Find the Support Cone (item 2) with the three Threaded Studs (item 1) on top. Referring to **Figure 5**, on a side between two studs, mark and drill four 13/64" [5.2 mm] diameter holes in the side of the Support Cone

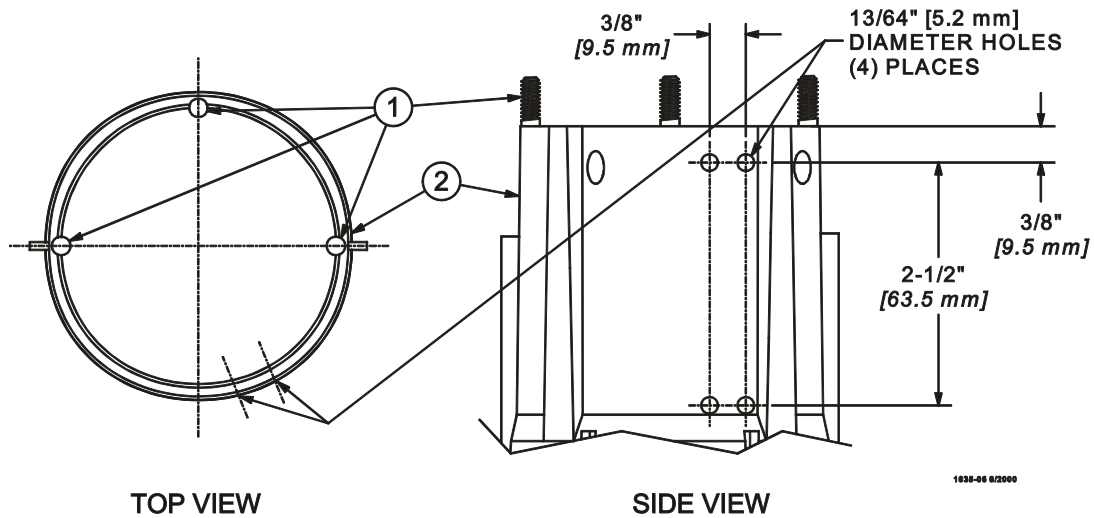


Figure 5. Marking and drilling the Support Cone

11. Slide the Sensor Switch (item 3) inside the Support Cone (item 4) and secure with two Nylon Wire Ties, as shown. See **Figure 6**.

**IMPORTANT:** The lock (item 2) portion of the Nylon Wire Tie must be to the inside of the Support Cone (item 4).

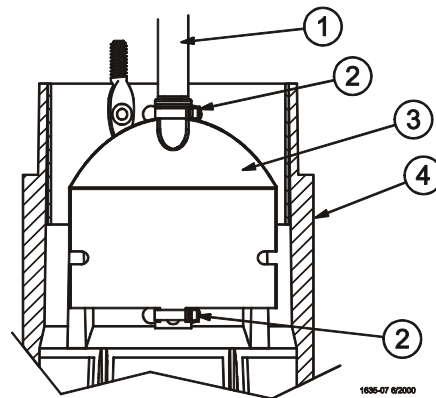


Figure 6. Installing the Sensor Switch

Item	Description
1	Black Tube on Sensor Switch Cord
2	Nylon Wire Tie Lock
3	Sensor Switch
4	Support Cone

12. Reassemble the Feeder Pan and install the Control Head with the new Switch Box Assembly as shown. Route the Sensor Switch Cord through the 1/2" diameter hole in the side of the Control Body Assembly as shown. Use a Nylon Wire Tie to secure the Sensor Switch Cord to the side of the Control Body Assembly through the two holes drilled in **step 8**. The Sensor Switch Cord must be kept away from the Auger.

**IMPORTANT:** Make sure the Black Tube on the Sensor Switch Cord is pushed down to the Sensor Switch.

**IMPORTANT:** Make sure to orient the Feeder Pan Assembly with the Sensor Switch as shown.

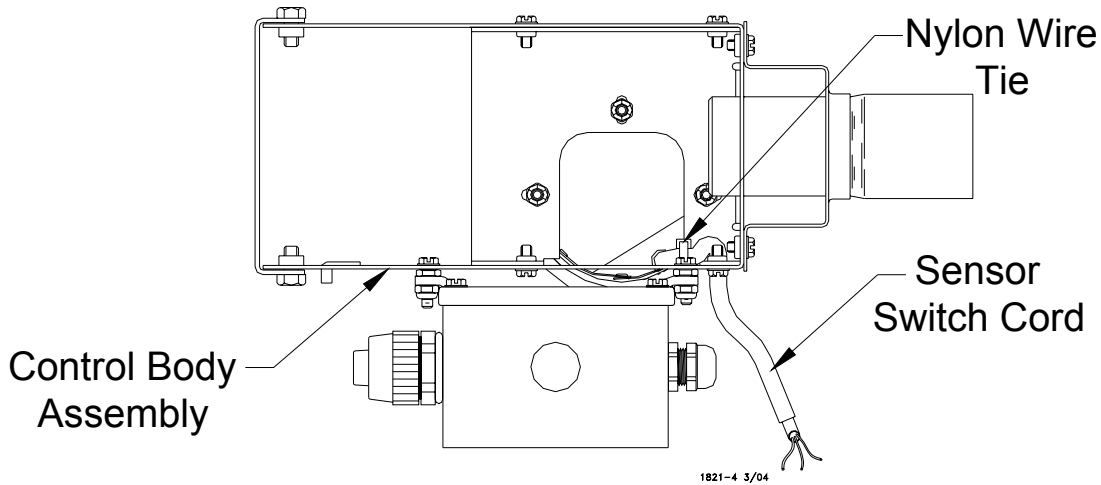


Figure 7. Assembling the Feeder Pan to the Control Body

13. Replace the Deflector Panel inside the Control Head.
14. Route the Sensor Switch Cord through the front Water Tight Connector on the Switch Box Assembly. Wire the Sensor Switch into the place provided on the Circuit Board inside the Switch Box Assembly Cover and tighten the Water Tight Connector around the Sensor Switch Cord.

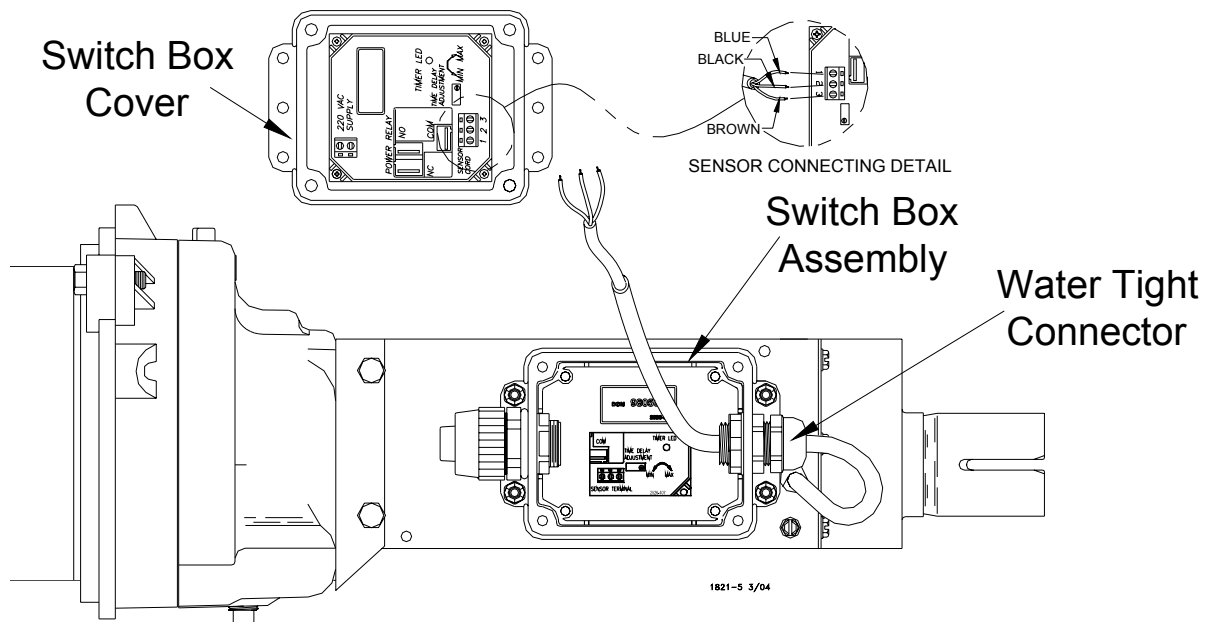
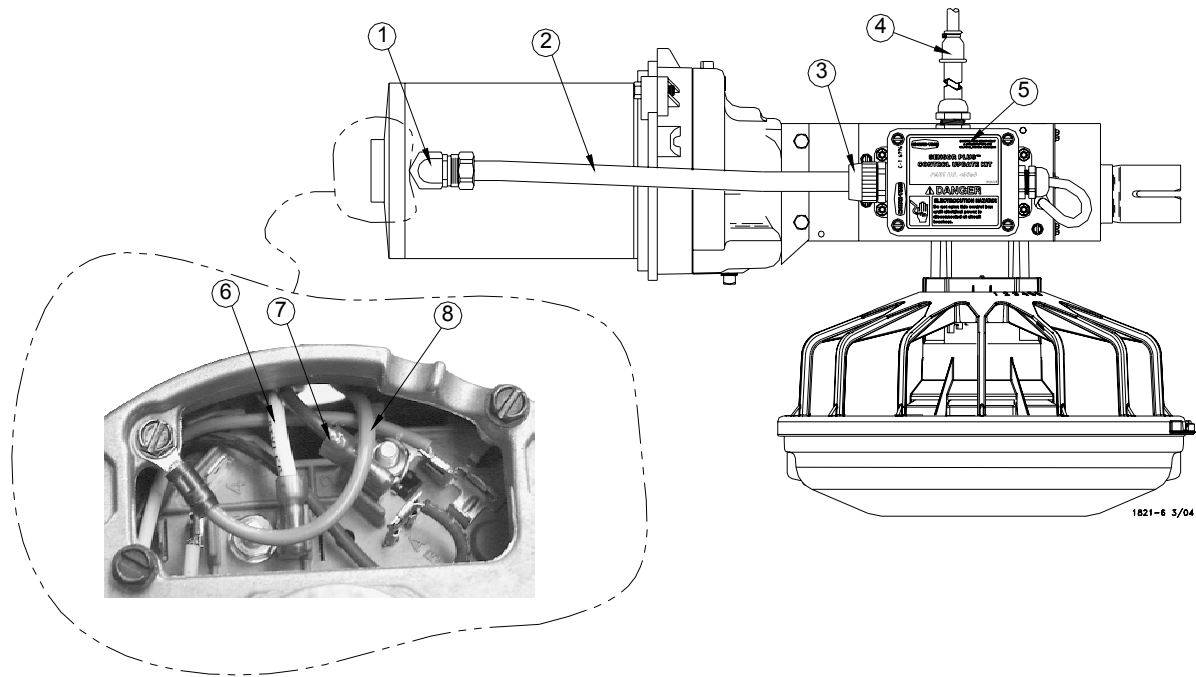


Figure 8. Connecting the Sensor Switch to the Switch Box

15. Push the motor wires through the Water Tight Connector on the new Switch Box Assembly. Attach the Flexible Conduit to the Water Tight Connector. Connect motor wires according to the internal wiring diagram on page **page 7**.



**Figure 9. Wiring the Motor**

Item	Description	Part No.
1	Metal Water Tight Connector	23810
2	Flexible Conduit	26982-1
3	Water Tight Connector	26980
4	Cord Assembly	4999-100
5	Product Identification Decal	2529-745
6	White Wire	_____
7	Black Wire	_____
8	Green Wire	_____

16. Make sure all hardware and fittings are tight. Reinstall all covers before operating the Control Pan.

## Switch Adjustment

The SENSOR PLUS Pan Half Round Sensor Switch is adjusted for a time delay of 15 seconds, but they may be changed for a specific installation.

To adjust the Time Delay:

- For less time — turn Time Delay Adjusting Screw clockwise (Light blinks fast)
- For more time — turn Time Delay Adjusting Screw counter-clockwise (Light blinks slow)

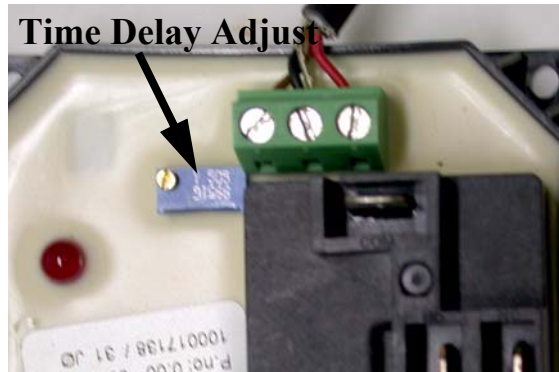
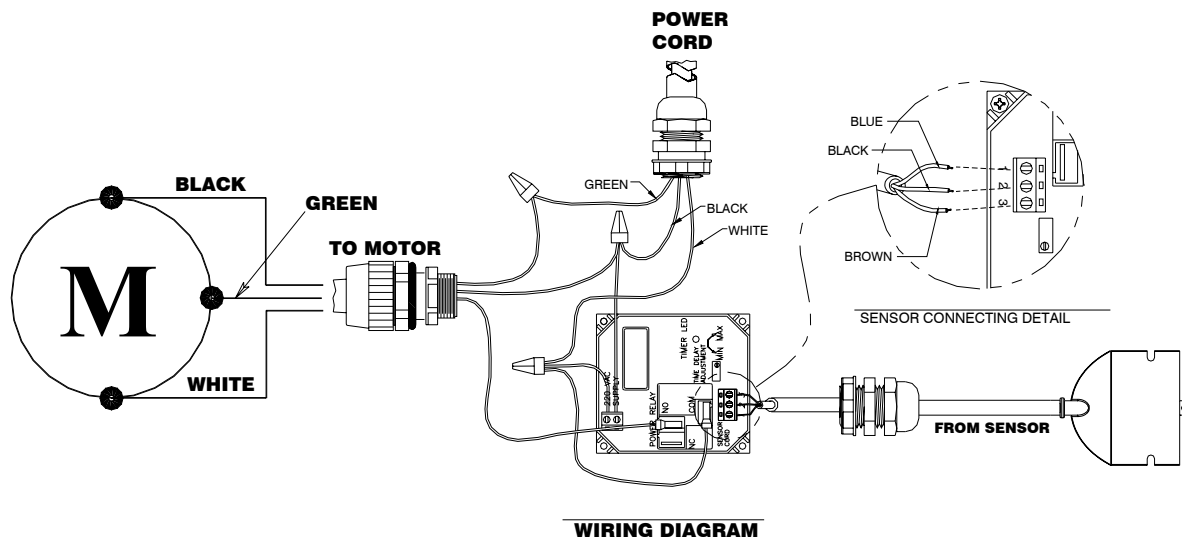
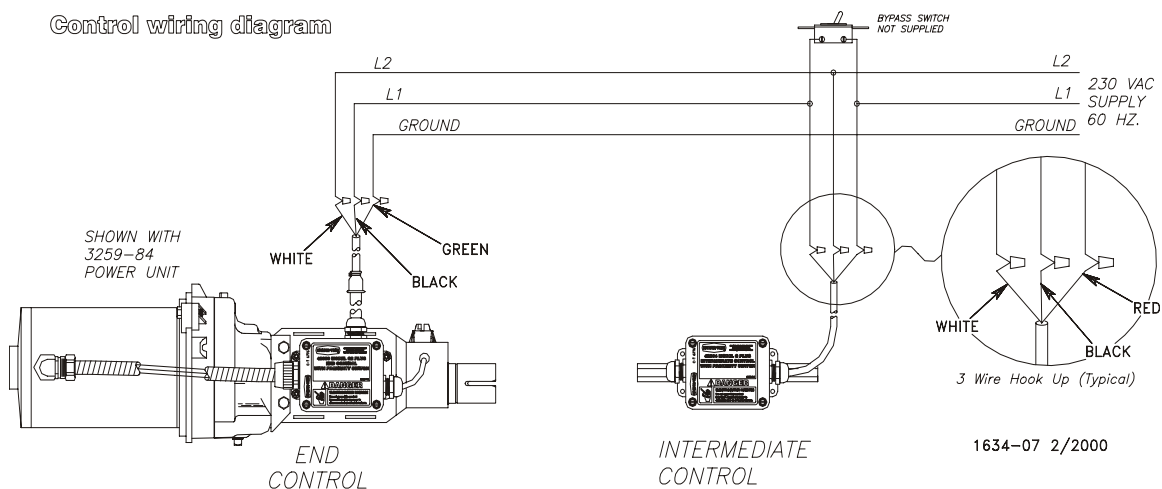


Figure 11. Adjusting the SENSOR PLUS Proximity Switch (Part No. 46673).

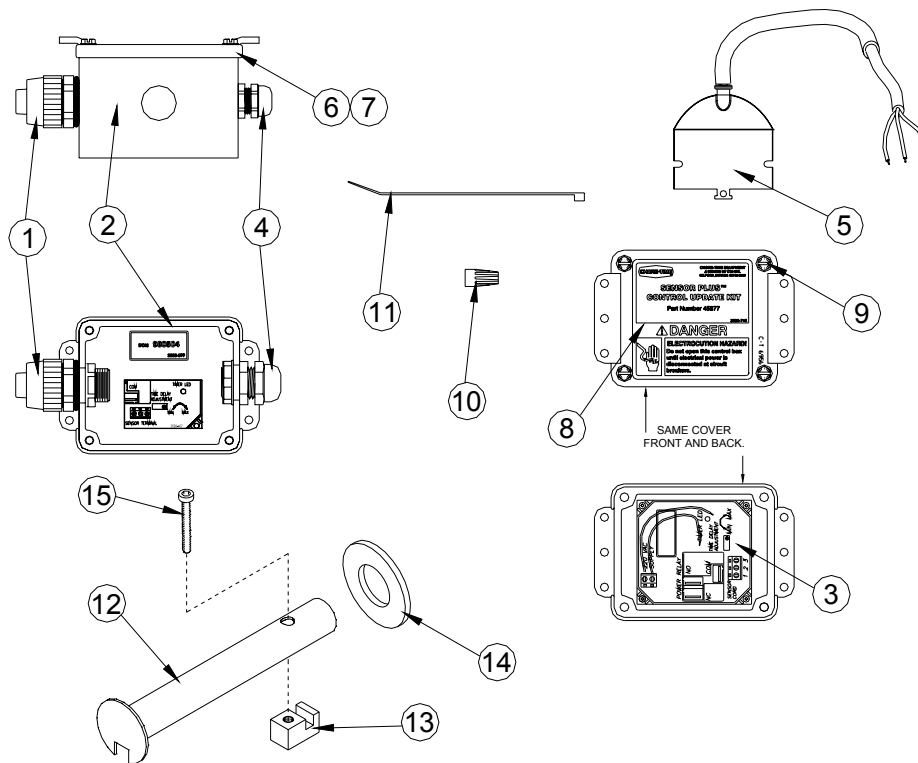
## Internal wiring diagram



## Control wiring diagram



# Parts Listing



1821-7 3/04

Item	Description	Part No.
1	Liquid Tight Connector	26980
2	Terminal Box	42627-12
3	Pan Sensor Circuit Board	46673
4	Liquid Tight Connector	23779
5	Pan Half Round Sensor Switch	46673
6	Terminal Box Mounting Cover	6956
7	Switch Box Gasket	6777
8	Danger/Product Identification Decal	2529-836
9	#10 x 1/2" Twin Helix Screw	6980
10	Orange Wire Nut	756-2
11	Plastic Wire Tie	6635
12	Drive Tube Weldment	44794
13	Drive Block	4642
14	Washer	1484
15	SKTH CP 255-20x1.50" Screw	5083-8



**This page left blank for notes.**



**Made to work.  
Built to last.**

**Contact your nearby Chore-Time distributor or representative for additional parts and information.**

**CTB Inc.  
P.O. Box 2000 • Milford, Indiana 46542-2000 • U.S.A.  
Phone (574) 658-4101 • Fax (800) 333-4191  
E-mail: [poultry@choretime.com](mailto:poultry@choretime.com) • Internet: <http://www.choretime.com>**

**Printed in the U.S.A.**