



Feeder Control Pan Light

Part Number 52600 & 53115

Introduction

The control pan light kit will provide additional light to the feeder control. This additional light is used to attract more bird activity to the control pan. The control pan light kit is available in either 115 or 230 VAC.

The light kit uses a 9 watt LED bulb to provide a long working life. The 230 VAC light will be wired to operate any time power is applied to the feeder control pan. The 115 VAC light will be wired to plug into a electrical receptacle.

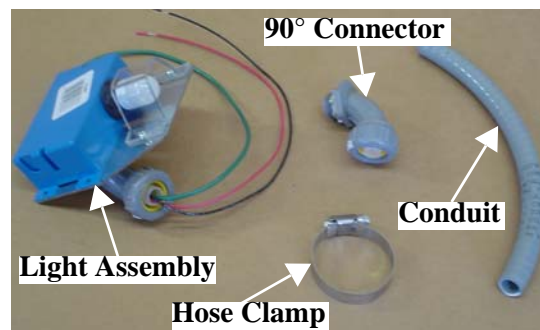


Figure 1. Control Light Parts

Installation



DANGER: Always disconnect power to the system when servicing or maintaining the equipment. Failure to disconnect power may cause injury or death.

All electrical wiring must be done by a qualified electrician in accordance with local and national codes.

230 VAC:

1. Mount the light kit over the pan assembly as shown, see Figure 2. Use the provided hose clamp to secure the light to the tube.
2. Connect light assembly to the control box using the provided conduit and conduit connectors.
3. See wiring diagrams below for the proper connection.

Route clamp

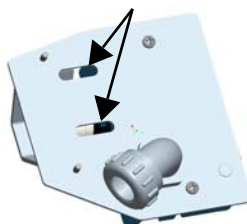


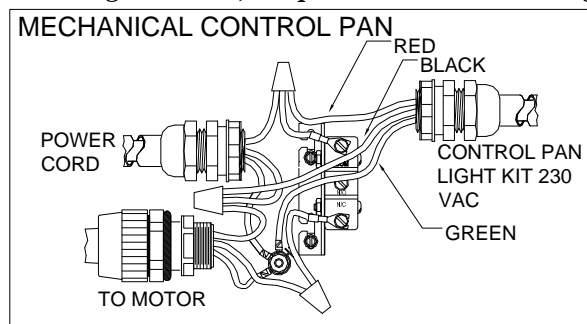
Figure 2. Light Kit Installation

115 VAC:

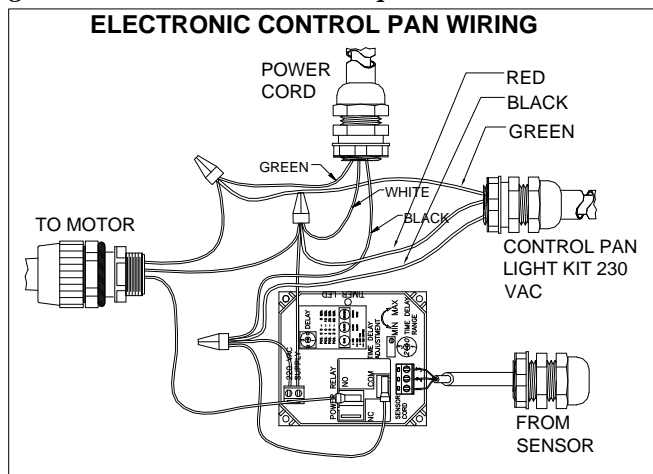
1. Mount the light kit over the pan assembly as shown, see Figure 2. Use the provided hose clamp to secure the light to the tube.
2. Insert the electrical plug from the control light into a 115 VAC electrical receptacle.

Wiring 230 VAC

When using wire nuts, wrap the nut and the wires going into the nut with electrical tape.



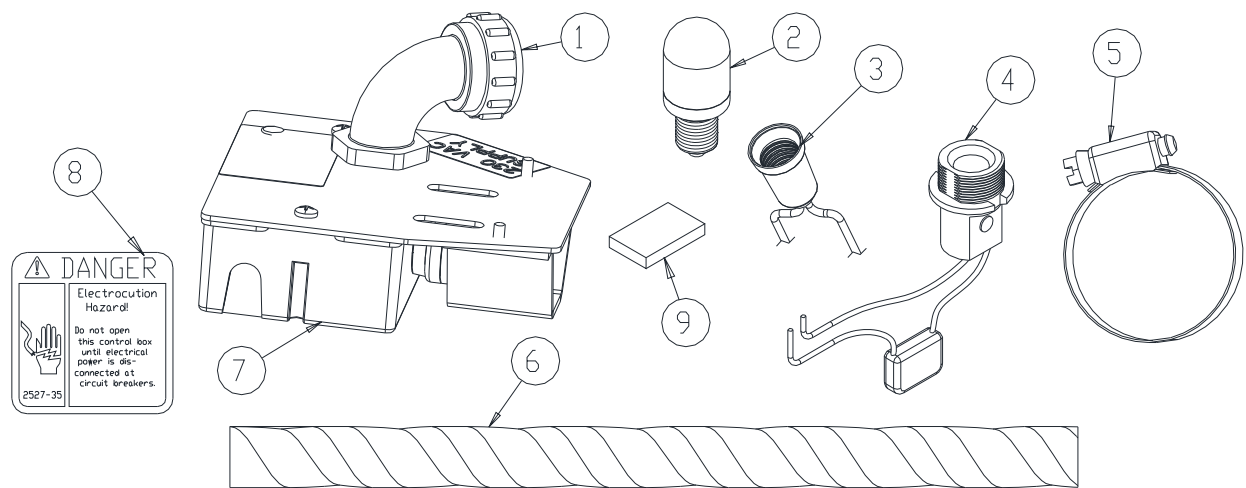
Note: Wrap wire nut and wires with electrical tape.



Chore-Time Poultry Production Systems, a Division of CTB, Inc.
P.O. Box 2000 • Milford, Indiana 46542-2000 • U.S.A.
Phone (574) 658-4101 • Fax (877) 730-8825

E-Mail: poultry@choretime.com • Internet: www.choretimepoultry.com

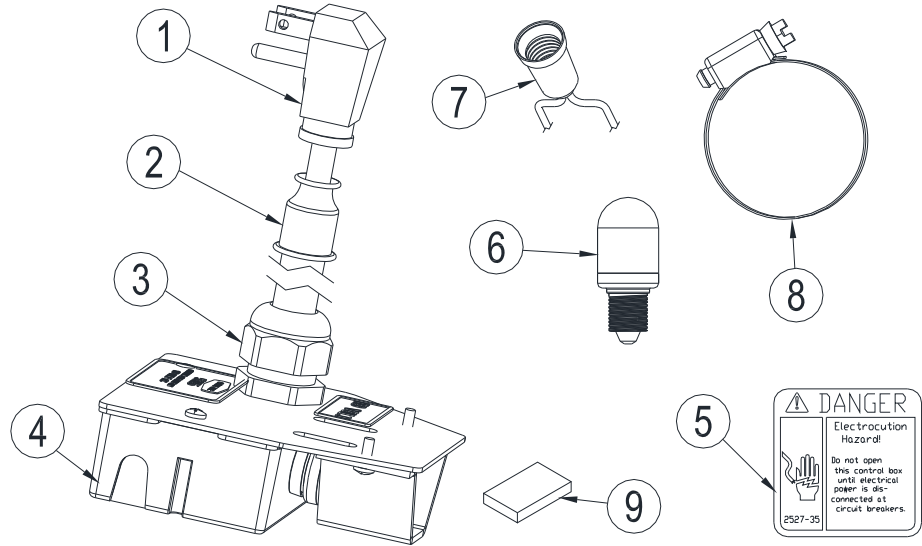
Control Pan Light 230 VAC Part No. 52600



Item	Description	Part No.
1	90 Deg. Conduit Connector	52597
2	9 Watt LED Bulb 230 VAC	53118
3	Light Socket	53119
*4	Socket Replacement Package	53117
5	Adjustable Hose Clamp	3527
6	3/8" Conduit 10" Long	52325
7	Machined Plastic Box	53116
8	Danger Decal	2527-35
9	Foam Pad (Package Qty. 8)	54000

*Item used in manufacturing until June 2010 with 115 VAC Light Bulb.

Control Pan Light 115 VAC Part No. 53115



Item	Description	Part No.
1	115 VAC Cord w/plug	4739-1
2	Reducing Seal	7815
3	Liquid Tight Connector	24685
4	Machined Box	53116
5	Danger Decal	2527-35
6	9 Watt LED Bulb 115 VAC	52330
7	Light Socket	53119
8	Adjustable Hose Clamp	3527
9	Foam Pad (Package Qty. 8)	54000