



## Feeder Control Pan Light Part Number 54260

### Introduction

The control pan light kit will provide additional light to the feeder control. This additional light is used to attract more bird activity to the control pan. The control pan light kit is available in 230 VAC.

The light kit uses a 9 watt LED bulb to provide a long working life. The 230 VAC light will be wired to operate any time power is applied to the feeder control pan.



Figure 1. Control Light Parts



**DANGER:** Always disconnect power to the system when servicing or maintaining the equipment. Failure to disconnect power may cause injury or death.

*All electrical wiring must be done by a qualified electrician in accordance with local and national codes.*

### 230 VAC:

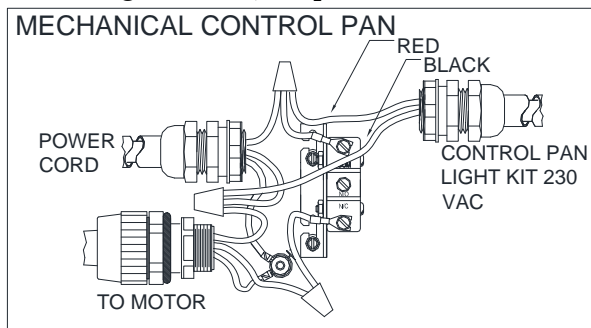
1. Mount the light kit over the pan assembly as shown, see **Figure 2**. Use the provided hose clamp to secure the light to the tube.
2. Connect light assembly to the control box drill a .875 dia. hole to use the provided conduit and conduit connectors.
3. See wiring diagrams below for the proper connection.



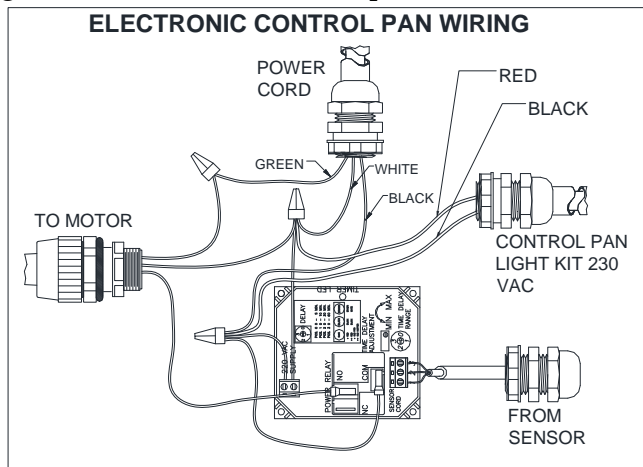
Figure 2. Light Kit Installation

### Wiring 230 VAC

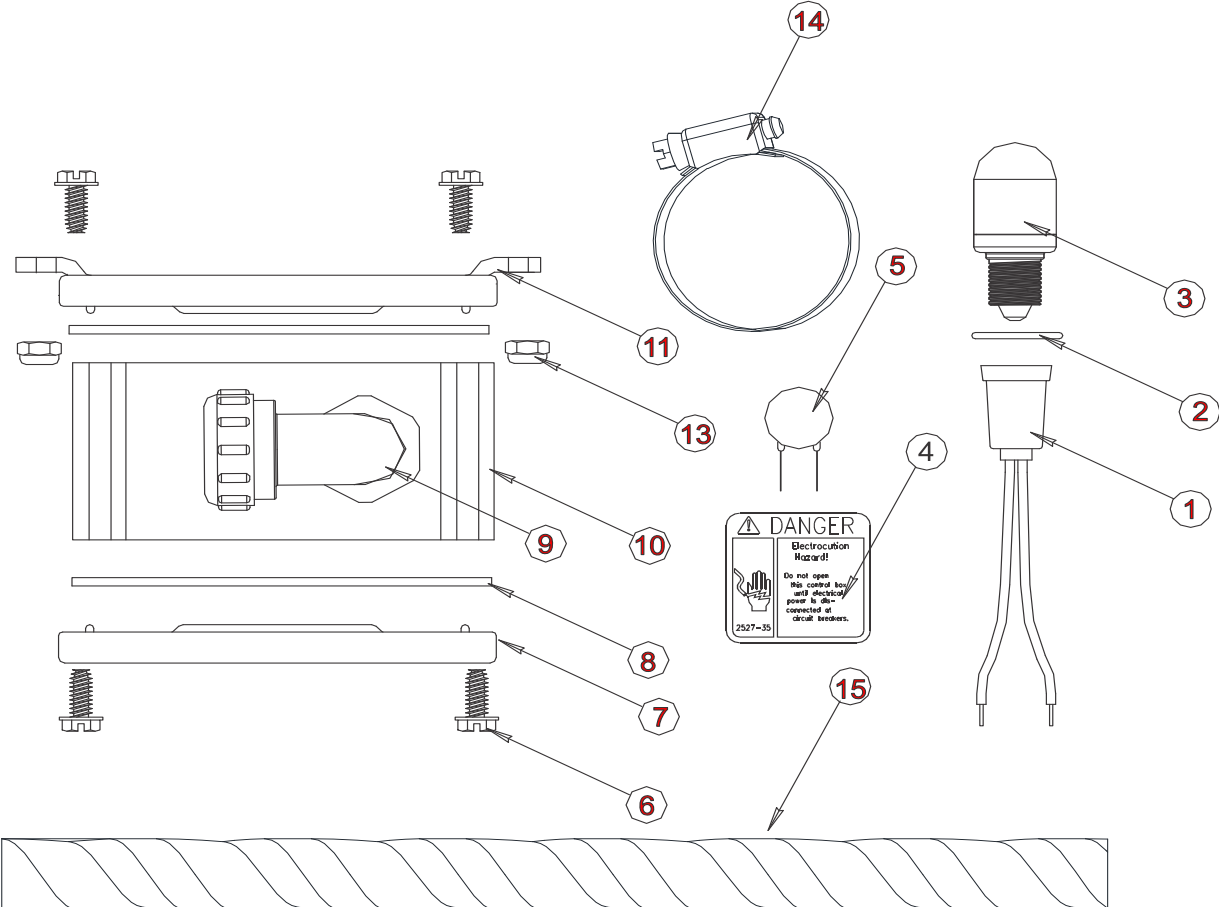
*When using wire nuts, wrap the nut and the wires going into the nut with electrical tape.*



**Note:** Wrap wire nut and wires with electrical tape.



**Control Pan Light 230 VAC Part No. 54260**



Item	Description	Part No.
1	LIGHT SOCKET	53119
2	RUBBER SEAL	54259
3*	230 VOLT LED BULB	54412
4	DANGER DECAL	2527-35
5	MOV	14063-1
6	#10 TWIN HELIX SCREW	28075
7	BOX COVER	6776C
8	GASKET	6777
9	90 DEG. 3/8"CONNECTOR	52597
10	MACHINED BOX	6774C-1
11	MOUNT COVER	6956C
12	---	---
13	#10 LOCK NUT	34019
14	BAND CLAMP	3527
15	10" CONDUIT 3/8"	52325-10

\* Includes item 2.