



## Feeder Control Pan Light Part Number 54260

### Introduction

The control pan light kit will provide additional light to the feeder control. This additional light is used to attract more bird activity to the control pan. The control pan light kit is available in 230 VAC.

The light kit uses a 9 watt LED bulb to provide a long working life. The 230 VAC light will be wired to operate any time power is applied to the feeder control pan.

### Installation



**DANGER:** Always disconnect power to the system when servicing or maintaining the equipment. Failure to disconnect power may cause injury or death.

*All electrical wiring must be done by a qualified electrician in accordance with local and national codes.*

#### Mechanical Pan Installation

1. Drill a 7/8" [2.22cm] hole in the bottom of the plastic box see **Figure 1**.
2. Install the light assembly as shown using the conduit and 90° connectors.
3. Use the provided clamp (3527) to secure the light to the tube.

Drill a 7/8" [2.22cm] hole in plastic box

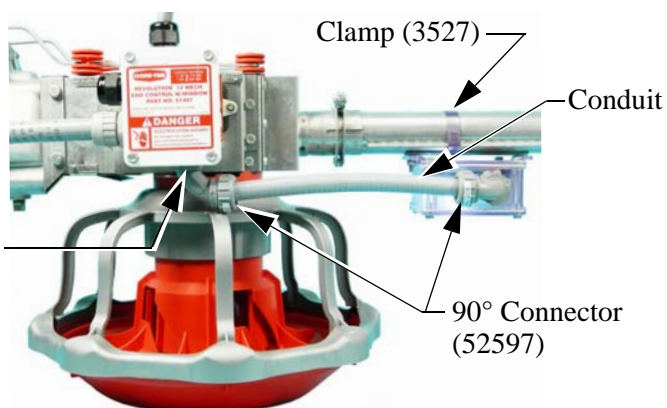


Figure 1. Light Kit Installation

#### Pan with Electronic Sensor Installation

1. Drill a 7/8" [2.22cm] hole in the plastic box see **Figure 2**.
2. Install the light assembly as shown using the conduit and 90° connectors.
3. Use the provided clamp (3527) to secure the light to the tube.

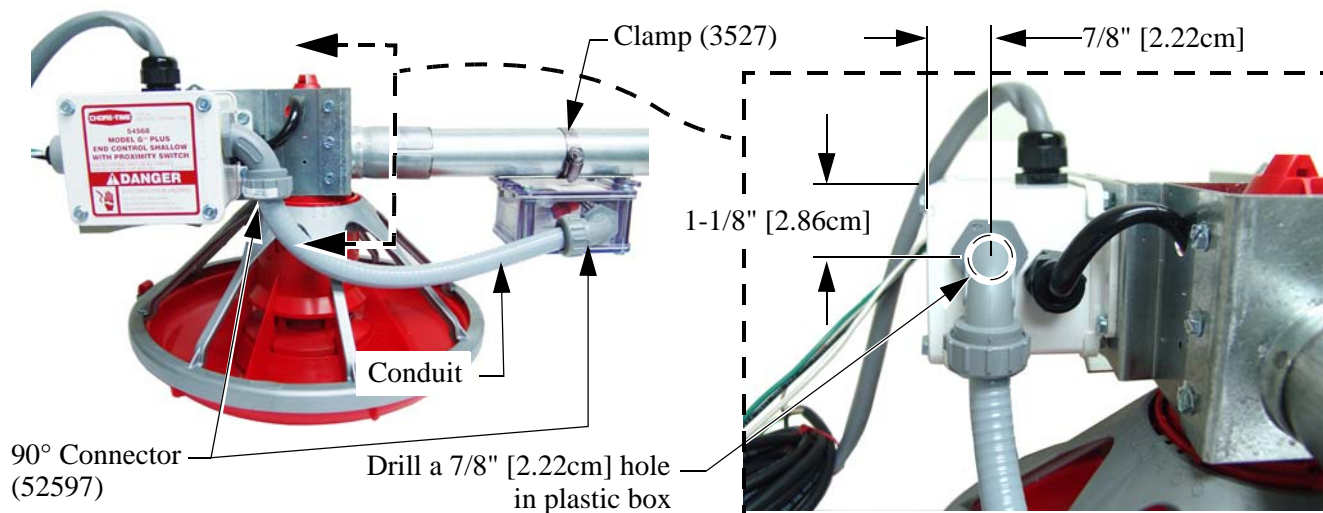
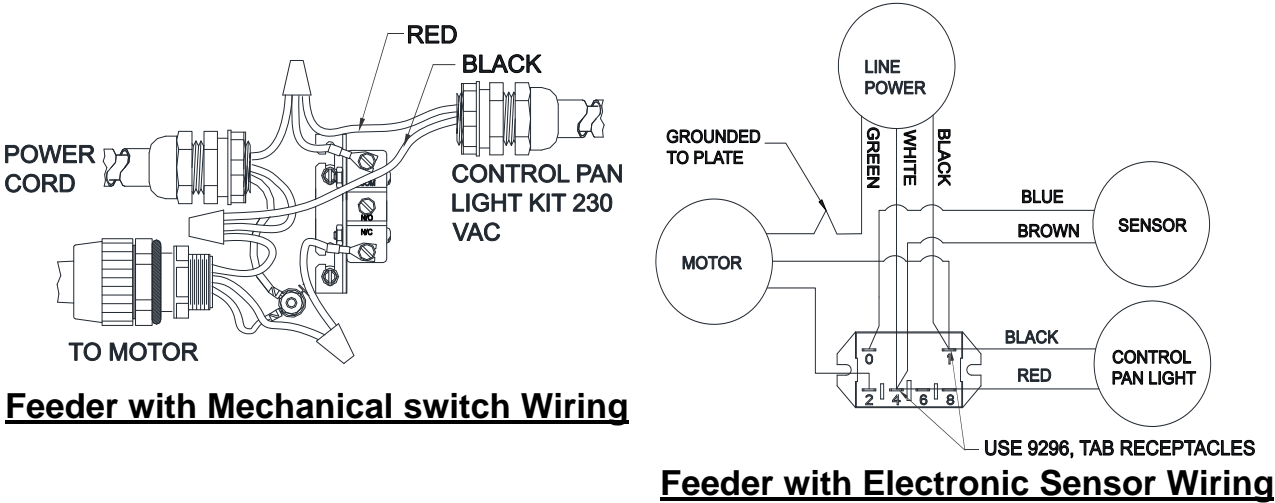


Figure 2. Light Kit Installation

Wiring 230 VAC

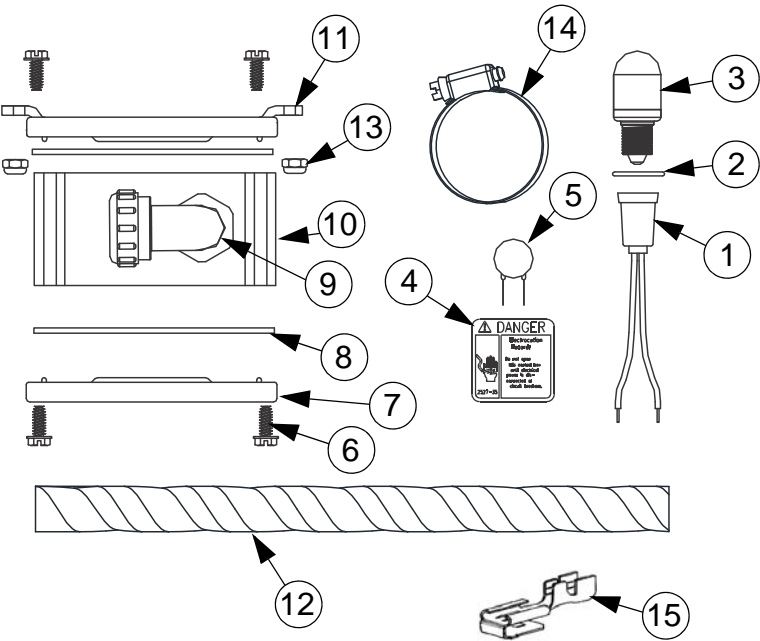
When using wire nuts, wrap the nut and the wires going into the nut with electrical tape.



Note: Wrap wire nut and wires with electrical tape.

Figure 3.Wiring

Control Pan Light 230 VAC Part No. 54260



Item	Description	Part No.
1	Light Socket	53119
2	Rubber Seal	54259
3*	230 Volt LED Bulb	54412
4	Danger Decal	2527-35
5	MOV	14063-1
6	#10 Twin Helix Screw	28075
7	Box Cover	6776C
8	Gasket	6777
9	90 Deg. 3/8"Connector	52597
10	Machined Box	6774C-1
11	Mount Cover	6956C
12	10" Conduit 3/8"	52325-10
13	#10 Lock Nut	34019
14	Band Clamp	3527
15	Tab Receptacle	9296
* Includes item 2.		

Chore-Time Group  
A division of CTB, Inc.  
PO Box 2000  
Milford, Indiana 46542-2000 USA  
Phone (574) 658-4101 Fax (877) 730-8825  
E-mail: [www.choretimepoultry.com](http://www.choretimepoultry.com)  
Internet: [poultry@choretime.com](mailto:poultry@choretime.com)