



## Funnel Switch Part No. 56311



### Introduction

The 56311 Funnel Switch has numerous applications. It can be utilized as a Level Switch to shut off a Fill System Motor when the Bin runs empty. It can also be used as a Level Switch in a Feed Screener application to replace a Mechanical Switch.

### Follow Safety Instructions

Carefully read all safety messages in this manual and on your equipment safety signs. Follow recommended precautions and safe operating practices.

#### **DANGER: Moving Parts**

Disconnect electrical power before working on system, equipment may start automatically. Otherwise personal injury will result.

Severe personal injury will result if the equipment is operated without covers properly installed.

#### **DANGER: Electrical Hazard**

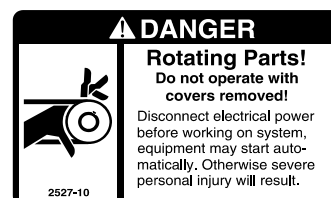
Disconnect electrical power before inspecting or servicing equipment unless maintenance instructions specifically state otherwise.

Ground all electrical equipment for safety.

All electrical wiring must be done by a qualified electrician in accordance with local and national electric codes.

Ground all non-current carrying metal parts to guard against electrical shock.

Electrical disconnects and over current protection are not supplied with the equipment.



**For additional parts and information, contact your nearest Chore-Time distributor or representative.**

**Find your nearest distributor at: [www.choretime.com/contacts](http://www.choretime.com/contacts)**

CTB, Inc.

PO Box 2000

Milford, Indiana 46542-2000 USA

Phone (574) 658-4101 Fax (877) 730-8825

Email: [choretime@choretime.com](mailto:choretime@choretime.com)

Internet: [www.choretime.com](http://www.choretime.com)

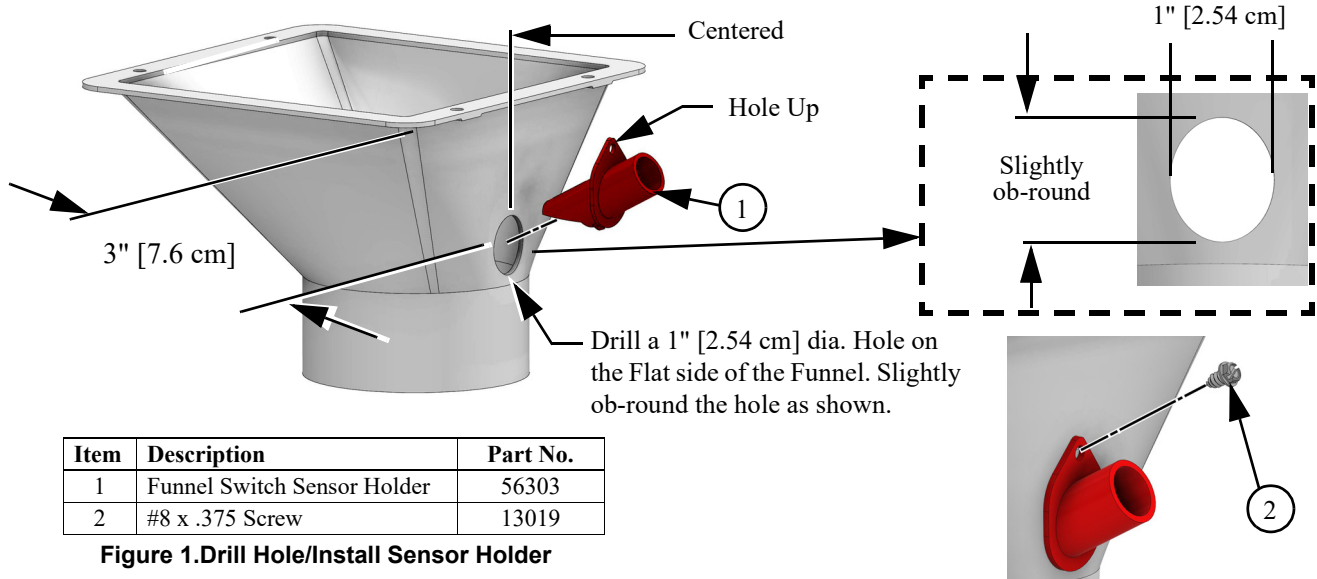
# Installation

The Funnel Switch Sensor Holder (**Item 1**) should be installed on the Flat portion of the Funnel as shown in **Figure 1** below.

1. Drill a 1" [2.54 cm] hole 3" [7.6 cm] below the top flange of the Funnel **as shown**.

**Note:** Drill the hole slightly ob-round vertically **as shown in the Figure**.

2. Insert the Funnel Switch Sensor Holder (**Item 1**) **hole up** and Attach to the Funnel with a #8 Screw (**Item 2**).

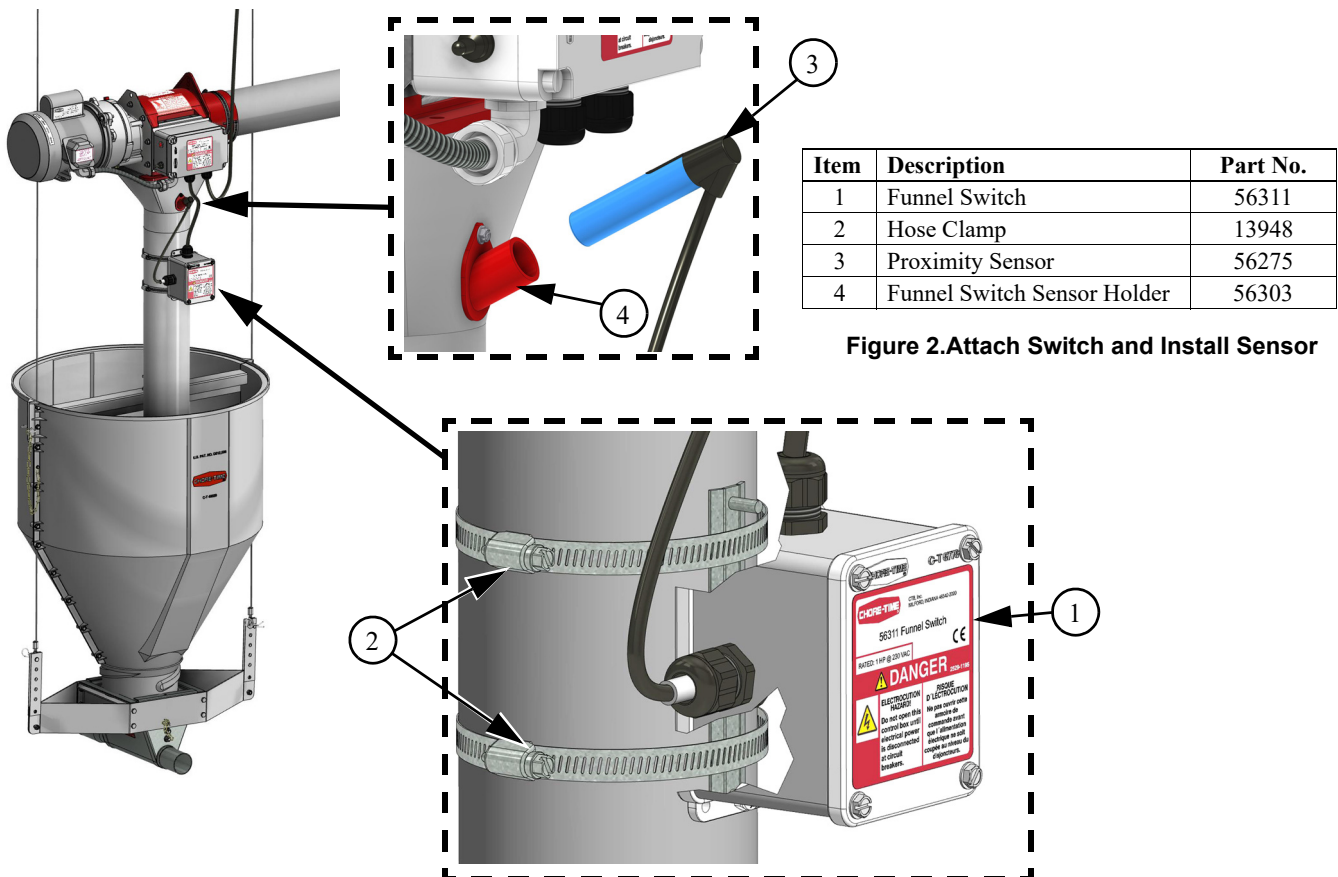


Item	Description	Part No.
1	Funnel Switch Sensor Holder	56303
2	#8 x .375 Screw	13019

**Figure 1. Drill Hole/Install Sensor Holder**

3. Fasten the Funnel Switch (**Item 1**) to the Drop Tube with two Hose Clamps (**Item 2**) **as shown**.

4. Install the Proximity Sensor (**Item 3**) in the Funnel Switch Sensor Holder (**Item 4**).



Item	Description	Part No.
1	Funnel Switch	56311
2	Hose Clamp	13948
3	Proximity Sensor	56275
4	Funnel Switch Sensor Holder	56303

**Figure 2. Attach Switch and Install Sensor**

## Switch Adjustment

Drop Tube Switch is pre-adjusted at the factory to a delay of "90" seconds. The delay may be changed for a specific installation.

### Time Delay Adjustment

- For Less Time: Turn the **Time Delay Adjustment Screw** counter-clockwise (light blinks faster).
- For More Time: Turn the **Time Delay Adjustment Screw** clockwise. (light blinks slower)

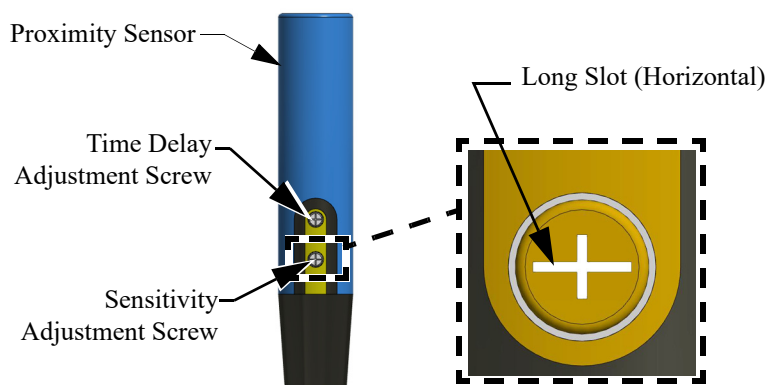


Figure 3.Switch Adjustment

### Sensitivity Adjustment

#### •The Sensitivity Adjustment

**Screw** is set from the factory and glued in place. If for some reason Sensitivity Adjustment needs reset to the factory setting: Turn Adjustment Screw all the way Counter-Clockwise, then Rotate Clockwise until the long slot is Horizontal.

# Wiring

## DANGER: Electrical Hazard

Disconnect electrical power before inspecting or servicing equipment unless maintenance instructions specifically state otherwise.

Ground all electrical equipment for safety.

All electrical wiring must be done by a qualified electrician in accordance with local and national electric codes.

Ground all non-current carrying metal parts to guard against electrical shock.

Electrical disconnects and over current protection are not supplied with the equipment.

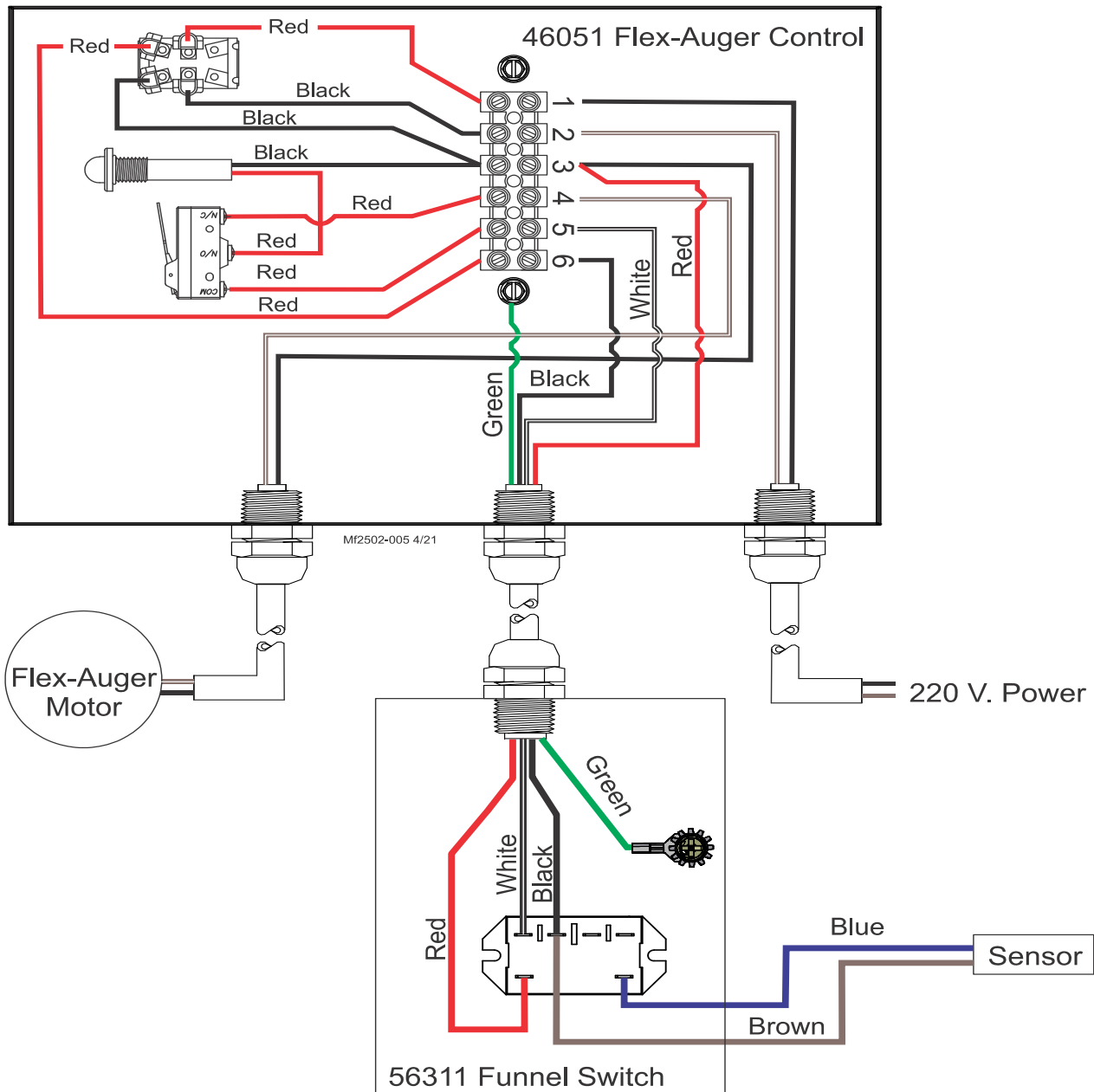
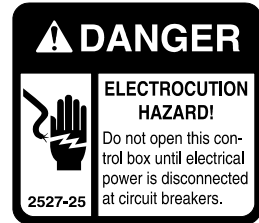
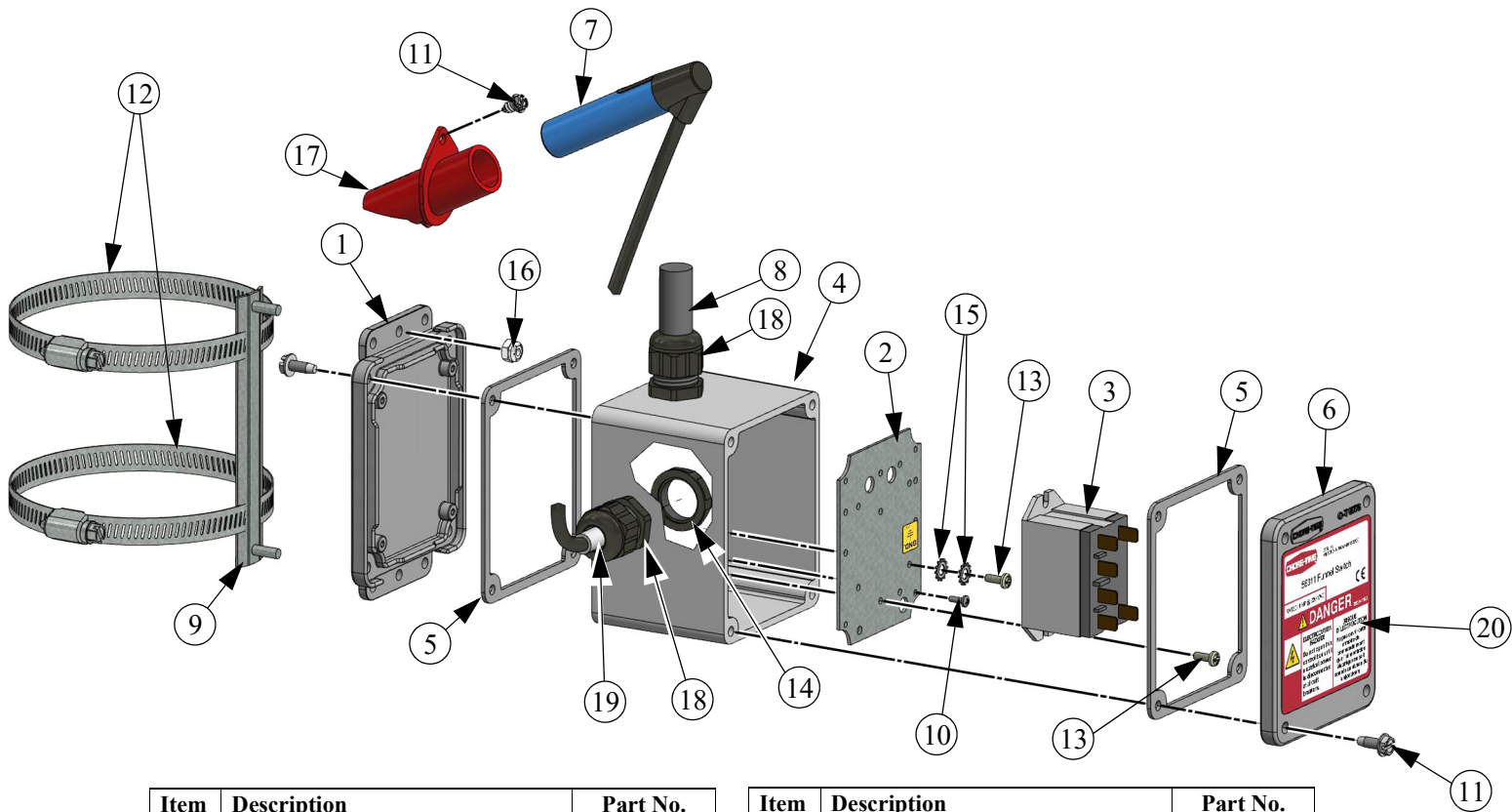


Figure 4.Wiring

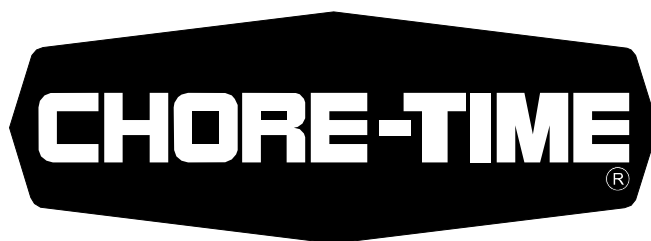
Parts Listing

56311 Drop Tube Switch



Item	Description	Part No.
1	Terminal Box Mounting Cover	6956
2	Relay Mount for Control	52316-2
3	Omron Relay	28904
4	General Purpose Box	42627-16
5	Switch Box Gasket	6777
6	Switch Box Cover	6776
7	Proximity Sensor	56275
8	Cord Assembly	4999-125
9	Mounting Bracket	52315
10	Pan H SFTP #6-32 Screw	35493

Item	Description	Part No.
11	#10 x .5 HXWH Screw	28075
12	5" Hose Clamp	13948
13	#6-32 x 3/8 Phil Pan H Screw	34660
14	.5 x 1.058 x .265 Nylon Lock Nut	43662
15	Lock Washer	305
16	Hx Lock Nut w/Nylon Insert	34019
17	Funnel Switch Sensor Holder	56303
18	Liquid Tight Connector	23779
19	.25 x 2 Vinyl Tubing	14454-2
20	56311 Funnel Switch Decal	2529-1195



**MADE TO WORK.**

**BUILT TO LAST.®**

**Revisions to this Manual**

<b>Page No.</b>	<b>Description of Change</b>	<b>ECO</b>
	New Manual	34172

**For additional parts and information, contact your nearest Chore-Time distributor or representative.  
Find your nearest distributor at: [www.choretime.com/contacts](http://www.choretime.com/contacts)**

CTB, Inc.  
PO Box 2000  
Milford, Indiana 46542-2000 USA  
Phone (574) 658-4101 Fax (877) 730-8825  
Email: [choretime@choretime.com](mailto:choretime@choretime.com)  
Internet: [www.choretime.com](http://www.choretime.com)