



500 Pound Hopper Assembly with Legs

Part No. 44297

The 500# Hopper is used in floor feeder installations to feed broilers, breeders, and turkeys.

The hopper will hold approximately 500 pounds (227 kg) of feed, based on 40 lb/ft³ or 64 kg/m³.

The hopper is shipped unassembled for shipping purposes. Refer to the following instructions for proper assembly procedure.

Assemble the Hopper

Important: Loosely assemble the entire 500# Hopper prior to tightening any hardware.

Refer to Parts List section to aid in the assembling the hopper.

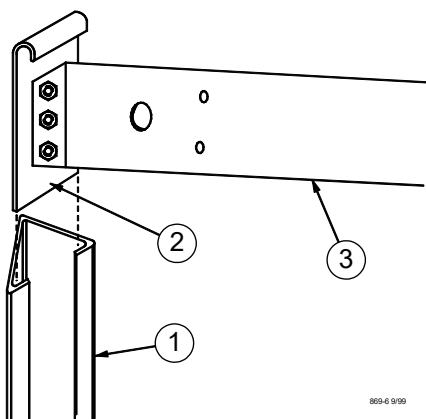
Seven Hopper Panels make up the sides of the hopper. Six of the panels are interchangeable and one panel, which must be on the bottom, has holes for mounting the switch.

1. Assemble the seven Hopper Panels, as shown, using hardware supplied.

Lap two panels so that feed cannot sift through the horizontal seams.

With the hopper laying on its side, loosely bolt the upper Leg Weldments on the outside corners of the hopper body.

2. Install the Hopper Ledge, loosely bolting it through the flanged seams.
3. Install the Top Plate Weldment, as shown in the diagram. The two press studs should be facing the open section of the hopper body.
4. Bolt a hook shaped anchor to both ends of both braces, using hardware supplied. See **Figure 1**.
5. Slide the anchor/brace assembly into the top of two Lower Leg Weldments. See **Figure 1**. Repeat this procedure on the other anchor/brace assembly, using two Lower Leg Weldments.

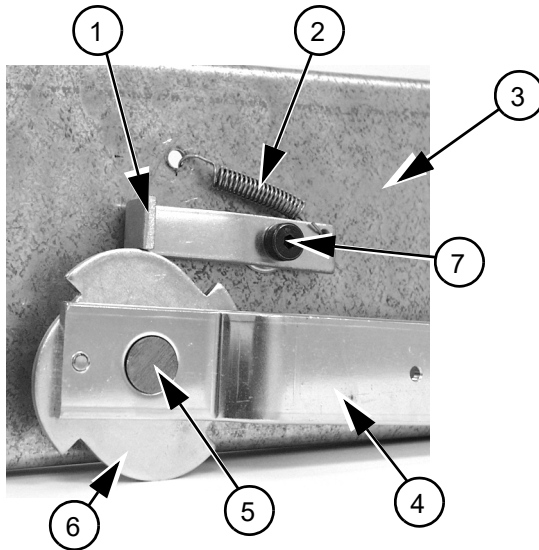


Item	Description
1	Lower Leg Weldment
2	Anchor
3	Brace (Right Hand and Left Hand)

Figure 1. Installing the Anchor, Brace and Lower Leg Weldment

6. With hopper body still on its side, slide two sets of Upper Leg Weldments inside the Lower Leg Weldments and braces.
7. Bolt the (4) Leg Braces around the bottom of the Hopper Legs and tighten all hardware.
8. Stand the Hopper Assembly on it's legs to install the Cable Shafts, Pulleys, Ratchet Weldment, Set Collars, Crank Arm Weldment, Cable, etc.

Refer to Parts List section for component assembly. Refer to **Figure 2** for assembling the Ratchet, Crank Handle, Pawl, and Spring.

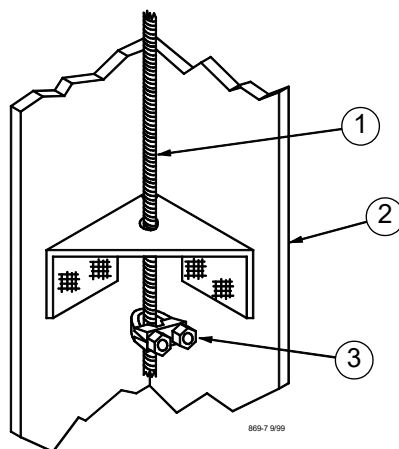


Item	Description	Part Number
1	Pawl	6672
2	Spring	1543
3	Brace	27533-1
4	Crank Arm Weldment	27613
5	Cable Shaft	27612
6	Ratchet Weldment	27604
7	Shoulder Bolt	4022-5

Figure 2. Assembling the Ratchet, Crank Handle, and the Spring

9. Route the Cable over one pulley, through hole in the Cable Shaft, and over the other pulley, then route it down the legs. Repeat for the other Cable.

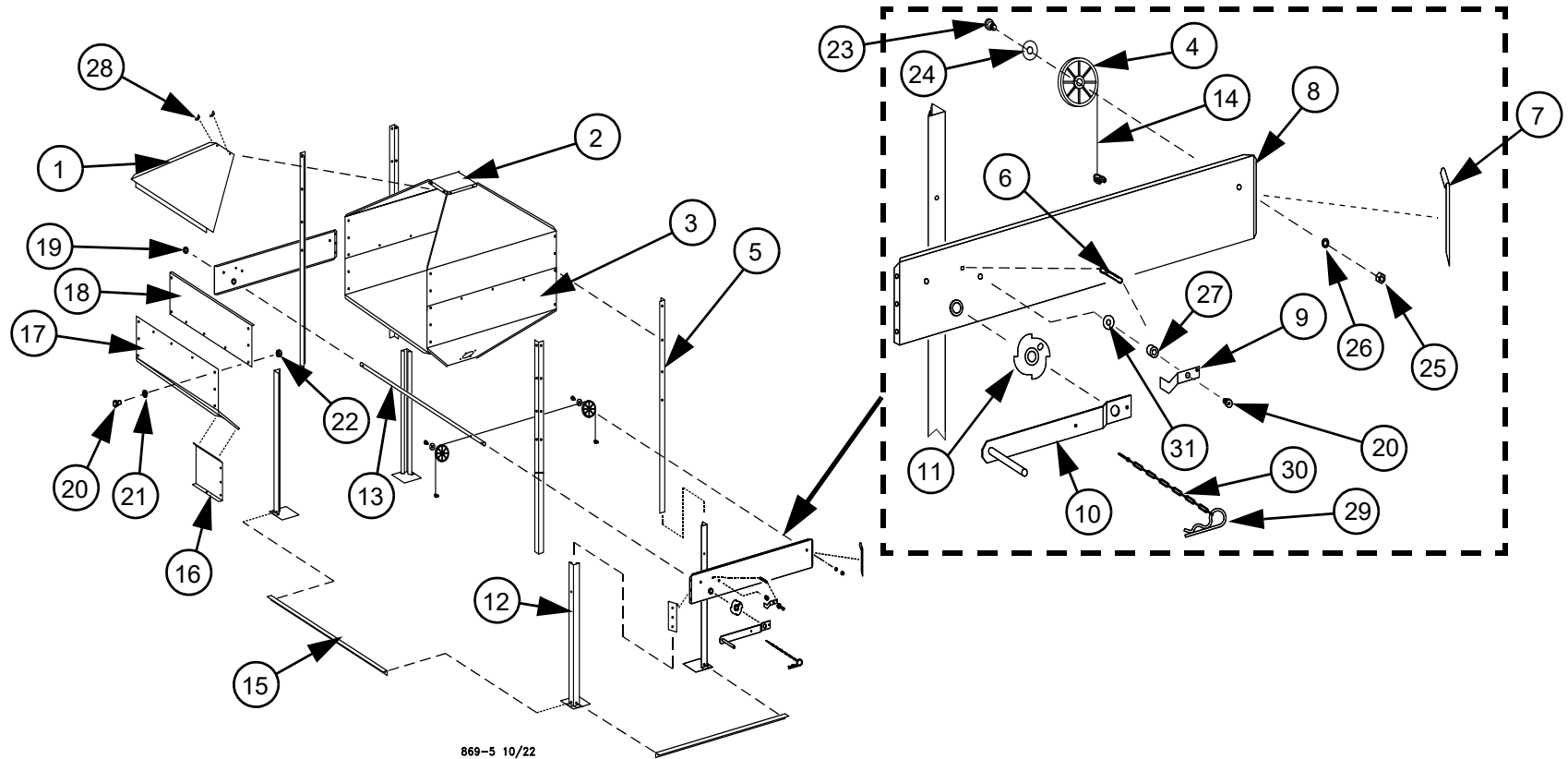
Place two Cable wraps around the Cable Shaft and clamp the Cable below the adjusting brackets on all four legs as shown in **Figure 3**.



Item	Description	Part Number
1	Cable	27534
2	Leg Weldment	27614
3	Cable Clamp	14898

Figure 3. Installing the Cable through on the Leg Weldments adjusting bracket

500# Hopper (44297) Assembly Parts Listing



869-5 10/22

Item	Description	Part No.	Qty
1	Hopper Cover	4520	1
2	Top Plate Weldment	4527	1
3	Hopper Side with Hole	44768	1
4	Pulley Wheel	2503	4
5	Leg Weldment	44770	4
6	Spring	1543	1
7	Anchor	27609	4
8	Brace (Left Hand) Brace (Right Hand)	27533-1 27533-2	1 1
9	Pawl	6672	1
10	Crank Arm Weldment	27613	1

Item	Description	Part No.	Qty
11	Ratchet Weldment	27604	1
12	Lower Leg Weldment	27614	4
13	Cable Shaft	27612	2
14	Cable	27534	2
15	Leg Brace	44772	4
16	Hopper Extension	27601	4
17	Hopper Side	44767	6
18	Hopper Ledge	44769	1
19	3/4" Set Collar	1049	4
20	5/16-18 x 1/2 Bolt	1839	84
21	5/16 Lock Washer	547	84

Item	Description	Part No.	Qty
22	5/16-18 UNC Nut	2145	84
23	1/2" Shoulder Bolt	5373-1	4
24	1/2" Flat Washer	2499	8
25	3/8-16 Hex Nut	1549	4
26	3/8 Lock Washer	5747	4
27	Spacer	27602	1
28	Wing Nut	1630	2
29	3/16 Hair Pin	3164	1
30	Chain	2128-250	.00267
31	.32 I.D. Washer	5933	1



**Made to work.
Built to last.**

Revisions to this Manual

Page No.	Description of Change
	Added Hardware to Bom's

**For additional parts and information, contact your nearest Chore-Time distributor or representative.
Find your nearest distributor at: www.choretime.com/contacts**

CTB, Inc.
PO Box 2000
Milford, Indiana 46542-2000 USA
Phone (574) 658-4101 Fax (877) 730-8825
Email: choretime@choretime.com
Internet: www.choretime.com