



100# Hopper Assembly and Parts List

The 100# Hopper may be ordered with Hopper Cover and/or Lower Hopper Switch or without either. See the parts list.

Loosely, assemble the 100# Hopper Side Panels, as shown in the diagrams below, using 1/4-20 bolts and 1/4-20 hex nuts (supplied in Hardware Package).

Assemble the Hopper Support. Locate the (2) Hopper Hangers in the Side Panel corners, as shown, and secure using 1/4-20 hardware supplied.

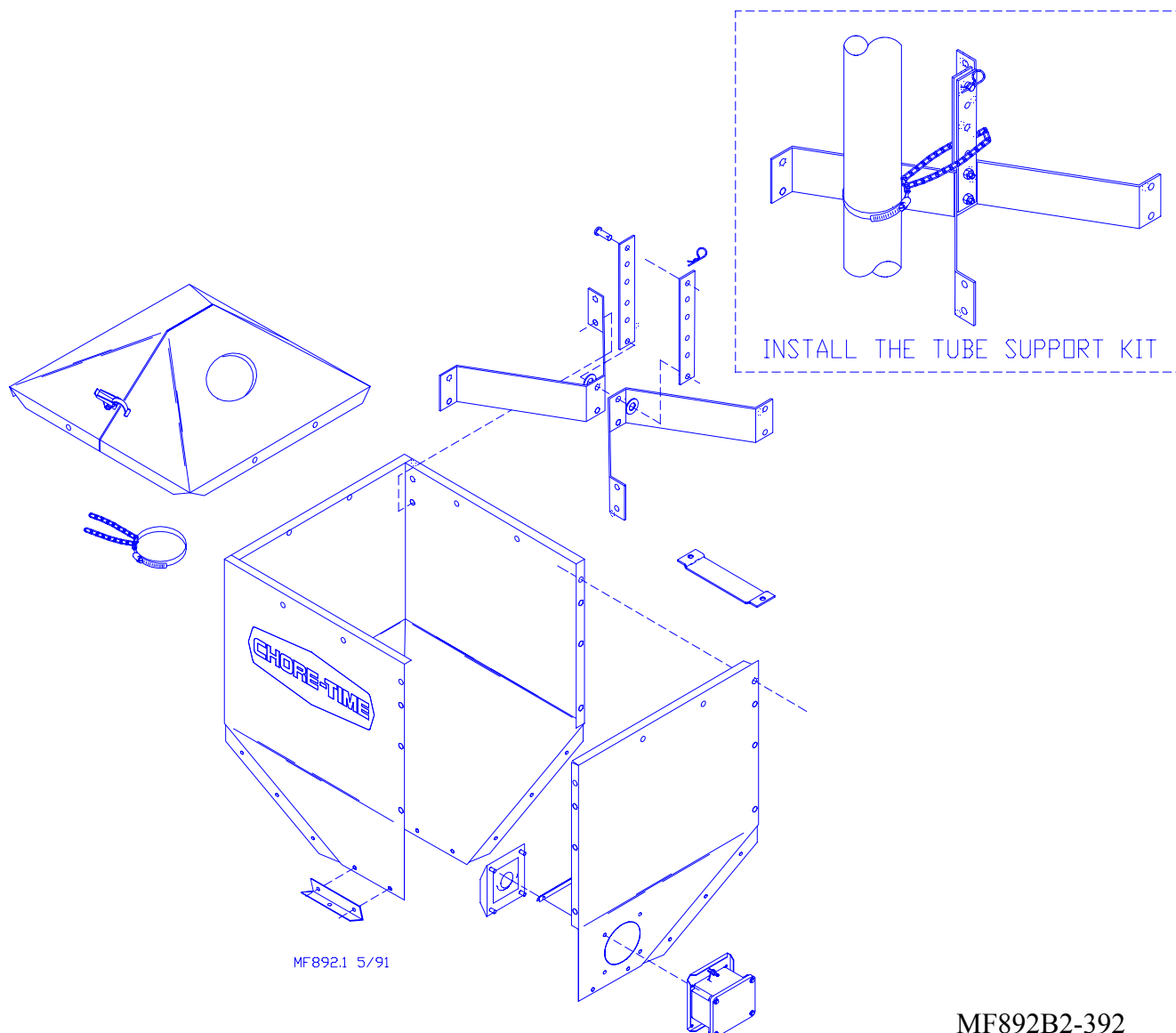
With the Hopper assembled, less the cover, tighten the hardware.

The Hopper Level Support is used to mount the Hopper Level Control inside the hopper. The Hopper Level Support should be located for best feed control.

Use the Hopper Level Support as a drilling template to determine mounting hole locations. Use a 1/4" bit to drill mounting holes. Use 1/4-20 hardware to secure the Hopper Level Support to hopper.

Secure the half of the cover with the tube opening on the top of the hopper. The other half of the cover will latch in place. Install the Tube Support Kit, as shown in inset (Drop Tube supplied with the fill system).

If the optional Lower Hopper Switch is used, mount the 7900 Diaphragm and Feed Deflector inside the hopper with the studs through the Hopper Panel (with switch hole). Connect the Switch Assembly to the Diaphragm using studs and 10-32 nuts supplied.



Key	Description	Part No.	Key	Description	Part No.
1*	Hopper Cover (w/o hole)	28212	22**	Pin	8757
2*	Hopper Cover (w/ hole)	28211	23**	6-32x7/8" Rd. Hd. M.S.	1921
3	Tube Support Assembly	14367	24**	#10 Twin Helix Screw	6980
4	Hopper Hanger	28165	25**	Deflector Shield	28281
5	Adjustment Bracket	2706	26**	10-32 Hex Nut	4297
6	Cotter Pin	2797-1	27**	10-32 Hex Locknut	6963
7	Hair Pin	2664	--**	Deflector Shield	28281
8	Hopper Side (w/o hole)	28164	--	Parts Package (contains hardware)	28167
9	Hopper Side (w/ hole)	28241			
10**	Gasket	6777			
11**	Diaphragm Assembly	7900			
12	Boot Hanger	28168			
13	Hopper Level Control Support Plate	28267			
14**	Mounting Plate	7908			
15**	Switch Box	7841			
16**	Switch Box Cover	6776			
17**	Switch Insulation	1907-5			
18**	Paddle	7896			
19**	SPDT Actuator Switch	7114			
20**	Switch Bracket	7068			
21**	Spring	6972			

NOTES

*These components may be ordered as an assembly under Part No. **28210**.

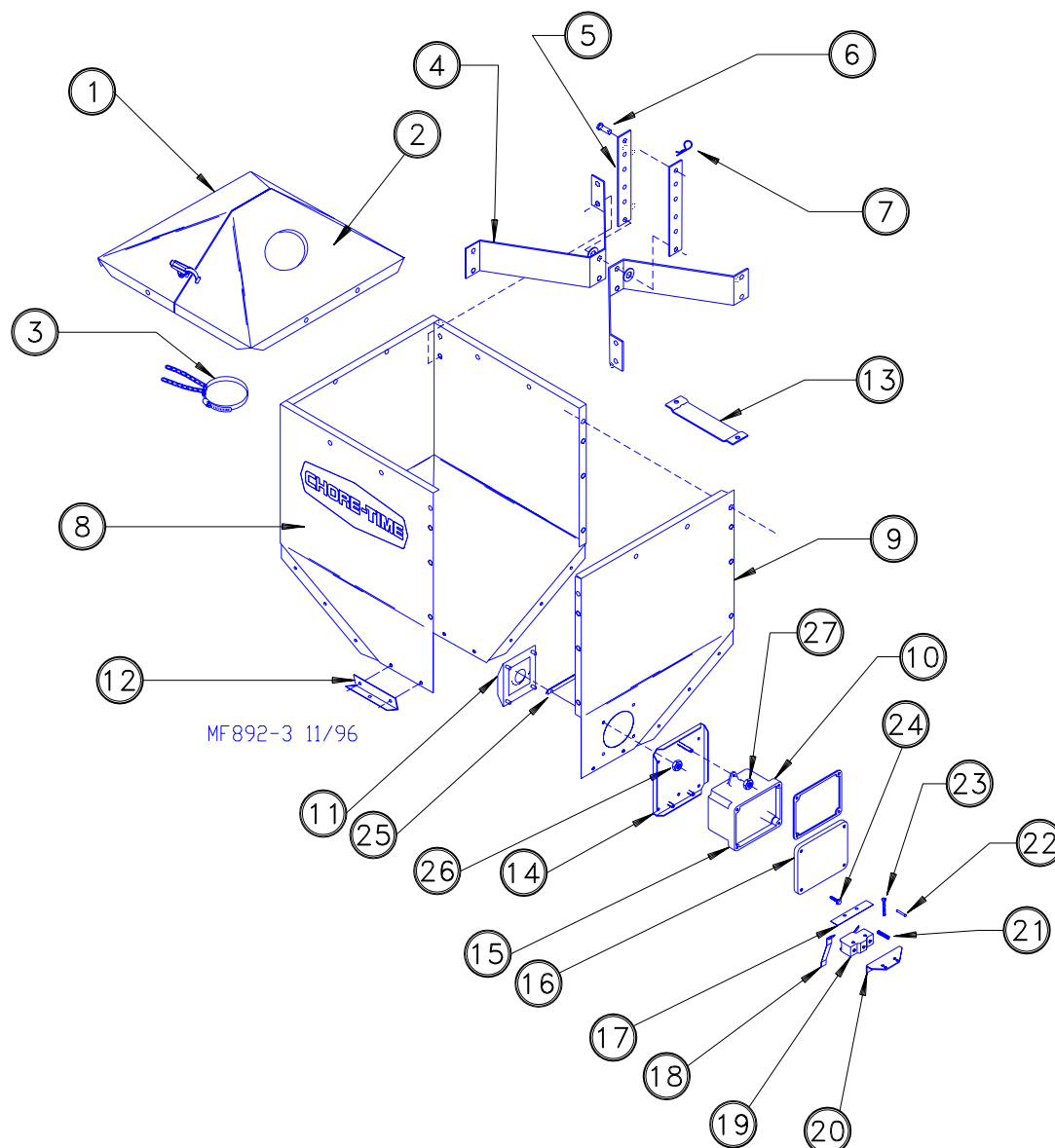
These components may be ordered as an assembly under Part No. **8798.

The 100# Hopper Assembly may be ordered under Part No. **28220**.

The 100# Hopper Assembly, including the Cover only, may be ordered under Part No. **28240**.

The 100# Hopper Assembly, including the Switch only, may be ordered under Part No. **28242**.

The 100# Hopper Assembly, including the Cover and Switch, may be ordered under Part No. **28245**.



Contact your nearby Chore-Time distributor or representative for additional parts and information.

Chore-Time Equipment, A Division of CTB, Inc.
P.O. Box 2000, Milford, Indiana 46542-2000 U.S.A.

Printed in the U.S.A.