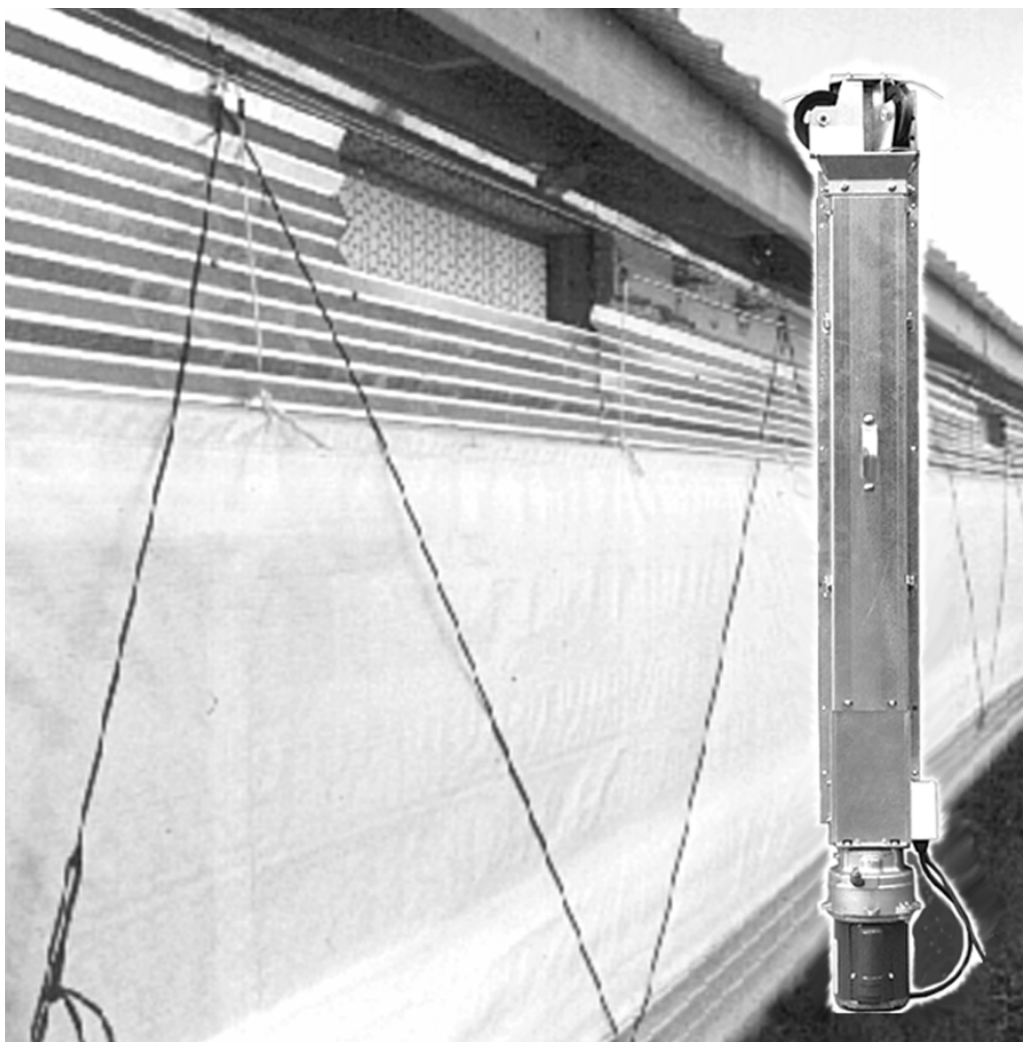


# **Swivel Top Linear-Lift™**

## **Installation & Operator's Instruction Manual**



MV1724-011 06/02

## Chore-Time Warranty

**Chore-Time Equipment** ("Chore-Time") warrants each new Chore-Time product manufactured by it to be free from defects in material or workmanship for one year from and after the date of initial installation by or for the original purchaser. If such a defect is found by the Manufacturer to exist within the one-year period, the Manufacturer will, at its option, (a) repair or replace such product free of charge, F.O.B. the factory of manufacture, or (b) refund to the original purchaser the original purchase price, in lieu of such repair or replacement. Labor costs associated with the replacement or repair of the product are not covered by the Manufacturer.

### Conditions and Limitations

1. The product must be installed by and operated in accordance with the instructions published by the **Manufacturer or Warranty will be void.**
2. Warranty is void if **all components** of the Swivel Linear-Lift™ Unit are not original equipment supplied by the **Manufacturer.**
3. This product must be purchased from and installed by an authorized distributor or certified representative thereof or the Warranty will be void.
4. Malfunctions or failure resulting from misuse, abuse, negligence, alteration, accident, or lack of proper maintenance shall not be considered defects under the Warranty.
5. This Warranty applies only to systems for the care of poultry and livestock. Other applications in industry or commerce are not covered by this Warranty.

The **Manufacturer** shall not be liable for any **Consequential or Special Damage** which any purchaser may suffer or claim to suffer as a result of any defect in the product. **"Consequential" or "Special Damages"** as used herein include, but are not limited to, lost or damaged products or goods, costs of transportation, lost sales, lost orders, lost income, increased overhead, labor and incidental costs and operational inefficiencies.

THIS WARRANTY CONSTITUTES THE MANUFACTURER'S ENTIRE AND SOLE WARRANTY AND THIS MANUFACTURER EXPRESSLY DISCLAIMS ANY AND ALL OTHER WARRANTIES, INCLUDING, BUT NOT LIMITED TO, EXPRESS AND IMPLIED WARRANTIES AS TO MERCHANTABILITY, FITNESS FOR PARTICULAR PURPOSES SOLD AND DESCRIPTION OR QUALITY OF THE PRODUCT FURNISHED HEREUNDER.

Chore-Time Distributors are not authorized to modify or extend the terms and conditions of this Warranty in any manner or to offer or grant any other warranties for Chore-Time products in addition to those terms expressly stated above. An officer of CTB, Inc. must authorize any exceptions to this Warranty in writing. The Manufacturer reserves the right to change models and specifications at any time without notice or obligation to improve previous models.

Effective: **July 2008**

**CTB Inc.**

**P.O. Box 2000 • Milford, Indiana 46542-2000 • U.S.A.**

**Phone (574) 658-4101 • Fax (877) 730-8825**

**E-Mail: [ctb@ctbinc.com](mailto:ctb@ctbinc.com) • Internet: <http://www.ctbinc.com>**

### Thank You

The employees of Chore-Time Equipment would like to thank you for your recent Chore-Time purchase. If a problem should arise, your Chore-Time distributor can supply the necessary information to help you.

# Contents

Topic	Page	User
<b>Chore-Time Warranty</b> .....	<b>2</b>	<b>C,D</b>
Support Information .....	4	
Distributor and Installer Information .....	4	
<b>General</b> .....	<b>4</b>	<b>C,I</b>
<b>About This Manual</b> .....	<b>5</b>	<b>C,I</b>
<b>Safety Information</b> .....	<b>5</b>	<b>C,I</b>
Safety–Alert Symbol .....	5	
Understanding Signal Words .....	5	
Follow Safety Instructions .....	6	
Decal Descriptions .....	6	
DANGER: Electrical Hazard .....	6	
DANGER: Moving Parts .....	6	
<b>Introduction and Layout Diagrams</b> .....	<b>7</b>	<b>C,I</b>
Tools Required .....	7	
Cable/Pulley Combinations .....	7	
Available Sizes and Speed of Operation .....	8	
Standard Swivel Top Linear-Lift™- (47859-Series) Part Numbers .....	8	
Chain Drive Swivel Top Linear-Lift™- (48028-Series) Part Numbers .....	8	
Potentiometer Kit (48233) Part Numbers .....	8	
<b>Swivel Top Linear-Lift™ Installation</b> .....	<b>9</b>	<b>I</b>
Swivel Top Pulley/Sprocket Angle Adjustment .....	9	
Bronze Nut Attachment Detail .....	9	
Cable/Chain Routing Systems .....	10	
Ceiling Installations .....	11	
<b>Mounting Hole Locations</b> .....	<b>12</b>	<b>C,I</b>
Ceiling Mount Swivel Top Linear-Lift™ Installation .....	13	
Two-Side Tunnel Curtain Application .....	13	
Side Wall Swivel Top Linear-Lift™ Installation .....	14	
Side Wall Swivel Top Linear-Lift™ Installation .....	14	
Alternative Vent Plug Locations for Various Swivel Top Linear-Lift™ Mountings .....	15	
Oil Recommendation .....	16	
Grease Recommendation .....	16	
<b>Swivel Top Linear-Lift™ Stop Switch Adjustment</b> .....	<b>17</b>	<b>C,I</b>
<b>Wiring Diagram</b> .....	<b>17</b>	<b>I</b>
Limit Switch and Schematic Diagram for Standard & Chain Models .....	17	
<b>Swivel Top Linear-Lift™ Switch Assemblies</b> .....	<b>18</b>	<b>C,I</b>
Swivel Top Linear-Lift™ Switch Assembly #47875 .....	18	
<b>Optional Pulleys and Accessories</b> .....	<b>19</b>	<b>C,I</b>
<b>Swivel Top Linear-Lift™ Drawings and Parts Listings</b> .....	<b>20</b>	<b>C,I</b>
Standard 47859-Series Drawing .....	20	
Standard, 47859-Series Parts Listing .....	21	
Chain Drive, 48028-Series Drawing .....	22	
Chain Drive, 48028-Series Parts Listing .....	23	

## General

### Support Information

The Chore-Time Swivel Top Linear-Lift™ is designed to open curtains or inlet doors. Using this equipment for any other purpose or in a way not within the operating recommendations specified in this manual will void the warranty and may cause personal injury.

This manual is designed to provide comprehensive planning, installation, safety, operation, and parts listing information. The Table of Contents provides a convenient overview of the information in this manual. The Table of Contents also specifies which pages contain information for the sales personnel, installer, and consumer (end user).

### Distributor and Installer Information

Please fill in the following information about your Product.  
Keep this manual in a clean, dry place for future reference.

**Distributor's Name** \_\_\_\_\_

**Distributor's Address** \_\_\_\_\_

**Distributor's Phone** \_\_\_\_\_ **Date of Purchase** \_\_\_\_\_

**Installer's Name** \_\_\_\_\_

**Installer's Address** \_\_\_\_\_

**Installer's Phone** \_\_\_\_\_ **Date of Installation** \_\_\_\_\_

**System Specifications** \_\_\_\_\_

\_\_\_\_\_

## About This Manual

The intent of this manual is to help you in two ways. One is to follow step-by-step in the order of assembly of your product. The other way is for easy reference if you have questions in a particular area.

**Important ! Read ALL instructions carefully before starting construction.**

**Important ! Pay particular attention to all SAFETY information.**

- *Metric measurements are shown in millimeters and in brackets, unless otherwise specified. “ ” equals inches and “ ’ ” equals feet in English measurements.*

*Examples:*

*1" [25.4]*

*4' [1 219]*

- Optional equipment contains necessary instructions for assembly or operation.
- Major changes from the last printing will be listed on the back cover.
- This Planning Symbol is used in areas where planning needs to take place before construction continues.
- Very small numbers near an illustration (*i.e.*, 1257-48) are identification of the graphic, not a part number.



## Safety Information

**Caution, Warning and Danger Decals** have been placed on the equipment to warn of potentially dangerous situations. Care should be taken to keep this information intact and easy to read at all times. Replace missing or damaged safety decals immediately.

Using the equipment for purposes other than specified in this manual may cause personal injury and/or damage to the equipment.



### Safety–Alert Symbol

**This is a safety–alert symbol.** When you see this symbol on your equipment, be alert to the potential for personal injury. This equipment is designed to be installed and operated as safely as possible...however, hazards do exist.

### Understanding Signal Words

**Signal words** are used in conjunction with the safety–alert symbol to identify the severity of the warning.



**DANGER** indicates an imminently hazardous situation which, if not avoided, **WILL** result in death or serious injury.



**WARNING** indicates a potentially hazardous situation which, if not avoided, **COULD** result in death or serious injury.



**CAUTION** indicates a hazardous situation which, if not avoided, **MAY** result in minor or moderate injury.

## Safety Information

### Follow Safety Instructions

Carefully read all safety messages in this manual and on your equipment safety signs. Follow recommended precautions and safe operating practices.

Keep safety signs in good condition. Replace missing or damaged safety signs.

### Decal Descriptions

#### **DANGER: Electrical Hazard**

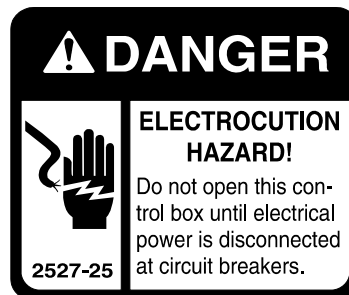
Disconnect electrical power before inspecting or servicing equipment unless maintenance instructions specifically state otherwise.

Ground all electrical equipment for safety.

All electrical wiring must be done by a qualified electrician in accordance with local and national electric codes.

Ground all non-current carrying metal parts to guard against electrical shock.

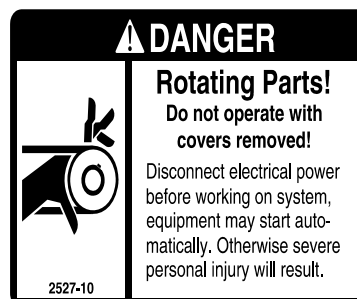
With the exception of motor overload protection, electrical disconnects and over current protection are not supplied with the equipment



#### **DANGER: Moving Parts**

Disconnect electrical power before working on system, equipment may start automatically. Otherwise personal injury will result.

Severe personal injury will result if the equipment is operated without covers properly installed.



## Introduction and Layout Diagrams

The Swivel Top **Linear-Lift™** is designed to open and close Inlet Curtains or Baffle Boards. It may be wired into the ventilation control (i.e. Static Pressure Inlet Control, Chore-Tronics, Super Selector, etc.)

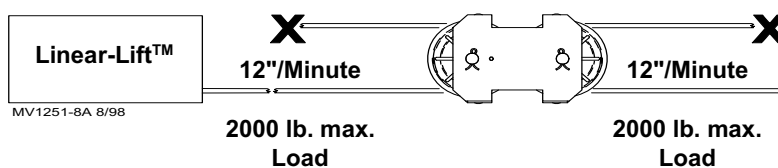
### Tools Required

- |                                 |                      |
|---------------------------------|----------------------|
| 1 5/16" Nut Driver              | 4 Wire Strippers     |
| 2 Drive Ratchet and 1/2" Socket | 5 Electrical Wire    |
| 3 Wire Cutters                  | 6 3/32" Allen Wrench |

### Cable/Pulley Combinations

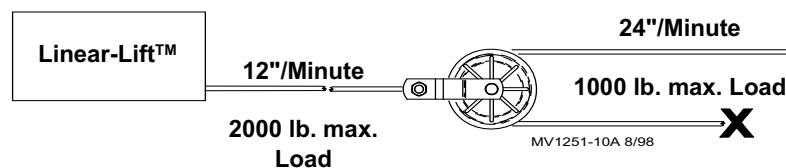
#### Same Speed

(Ratio 1:1)



#### Speed Up

(Ratio 1:2)



#### Slow Down

(Ratio 2:1)

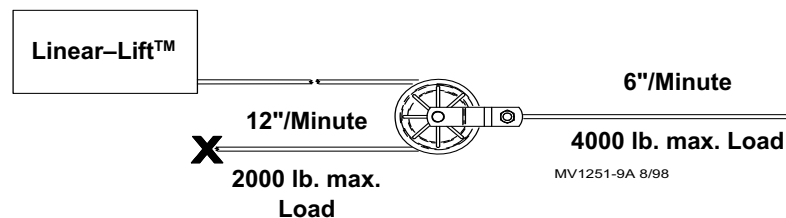


Figure 1. Cable/Pulley Combination

## Available Sizes and Speed of Operation

- The Swivel Top Linear-Lift™ is available in 22", 32", 44", and 62" stroke.

### Standard Swivel Top Linear-Lift™- (47859-Series) Part Numbers

<b>62 RPM Version</b>				
<b>Stroke</b>	<b>230 Volt</b>	<b>230 Volt/ Less Swivel Pulley</b>	<b>115 Volt</b>	<b>115 Volt/ Less Swivel Pulley</b>
22" Stroke	47859-2260	47859-226L	47859-2160	47859-216L
32" Stroke	47859-3260	47859-326L	47859-3160	47859-316L
44" Stroke	47859-4260	47859-426L	47859-4160	47859-416L
62" Stroke	47859-6260	47859-626L	47859-6160	47859-616L

<b>31 RPM Version</b>		
<b>Stroke</b>	<b>230 Volt</b>	<b>230 Volt/ Less Swivel Pulley</b>
22" Stroke	47859-2230	47859-223L
32" Stroke	47859-3230	47859-323L
44" Stroke	47859-4230	47859-423L
62" Stroke	47859-6230	47859-623L

### Chain Drive Swivel Top Linear-Lift™- (48028-Series) Part Numbers

<b>62 RPM Version</b>		
<b>Stroke</b>	<b>230 Volt</b>	<b>115 Volt</b>
22" Stroke	48028-2260	48028-2160
32" Stroke	48028-3260	48028-3160
44" Stroke	48028-4260	48028-4160
62" Stroke	48028-6260	48028-6160

<b>31 RPM Version</b>	
<b>Stroke</b>	<b>230 Volt</b>
22" Stroke	48028-2230
32" Stroke	48028-3230
44" Stroke	48028-4230
62" Stroke	48028-6230

### Potentiometer Part Numbers

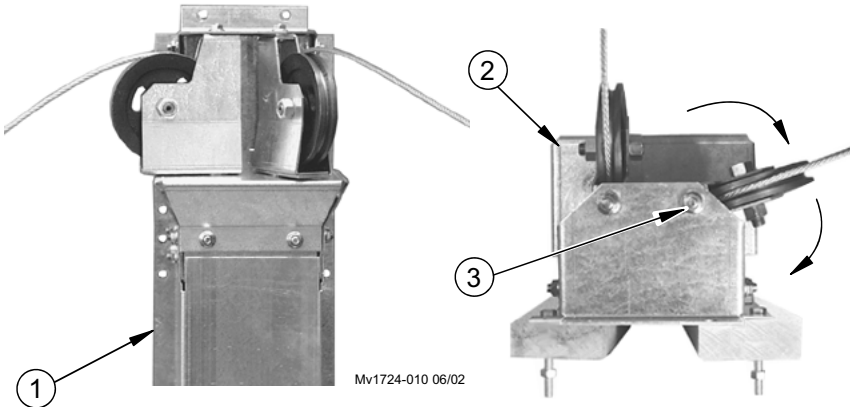
If a Potentiometer is desired, order the Potentiometer Kit (Part No. 48233)



Linear-Lift Installation

Swivel Top Pulley/Sprocket Angle Adjustment (Cable Version)

The Swivel Top Linear-Lift offers a variety of system cable routing options, and can be located in building corners where the system cables are routed directly away from the front of the Linear-Lift™ (See Figure 2 below). Loosen the Nuts (Item 3, Figure 2), to adjust for Pulley angle, then retighten once the desired angle has been achieved.

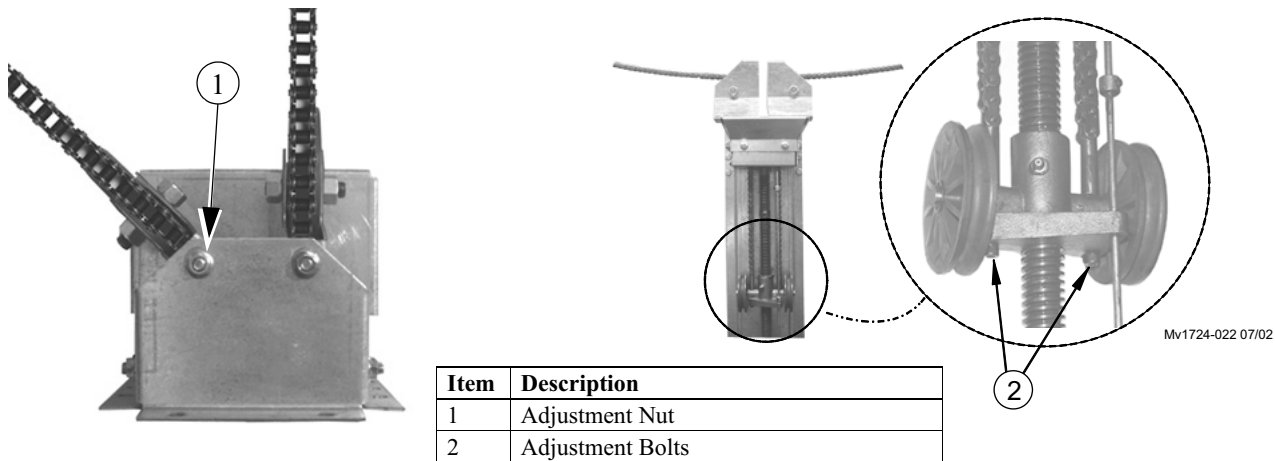


Item	Description
1	Swivel Top Linear-Lift™ (Front View)
2	Swivel Top Linear-Lift™ (Top View)
3	Adjustment Nuts

Figure 2. Swivel Top Pulley/Sprocket Angle Adjustment (Cable Version)

Swivel Top Pulley/Sprocket Angle Adjustment (Chain Version)

To adjust the Chain-Drive Version, loosen the Nuts, (Item 1, Figure 3) swivel the Pulleys to the desired angle and re-tighten. The Adjustment Bolts (Item 2) should rotate freely to allow the chain to line up correctly with the Sprockets. If necessary, use a 3/16 Allen wrench to turn the adjustment bolts for proper alignment of the chain. **Caution: Do not break the Adjustment Bolts loose!! Only turn them for proper chain alignment.**

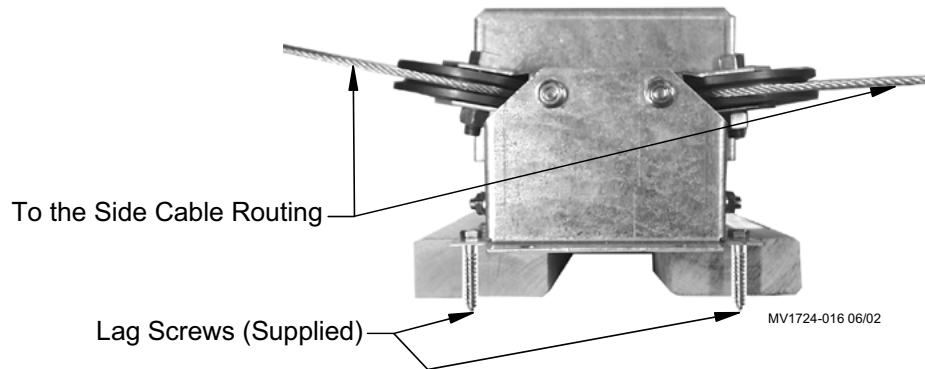


Item	Description
1	Adjustment Nut
2	Adjustment Bolts

Figure 3. Swivel Top Pulley/Sprocket Angle Adjustment (Chain Version)

## "To the Side" Cable/Chain Routing Systems

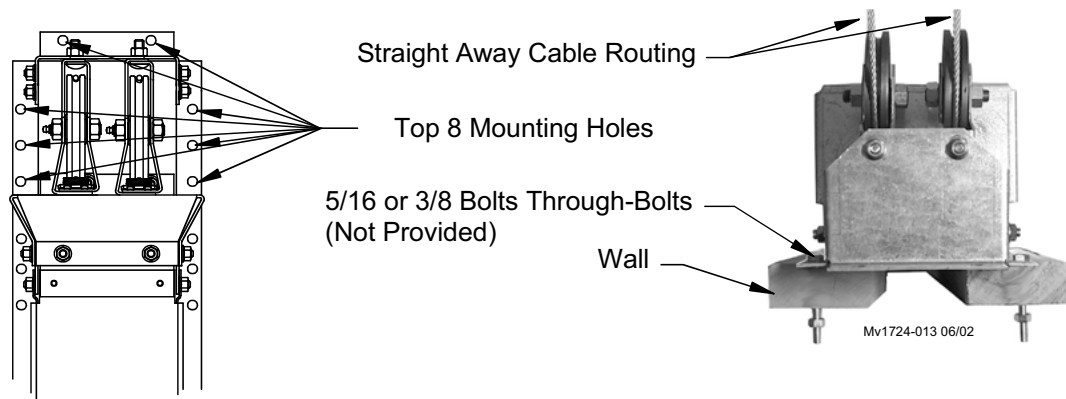
If your cables/chains are routed "to the sides", as opposed to straight away from the Lift, use the Lag Screws provided for mounting. (**Figure 4 below**). All Lag Screw Locations are shown in detail in **Figure 4**.



**Figure 4. Adjusting Swivel Angle (Cable Version Shown)**

## "Straight-Off" Cable/Chain Routing Systems

If both cables are to be routed "straight off" of the front of the unit, (**Figure 5**), consider using Through-Bolts to secure the top of the LIFT to the supporting wall. Use the top 8 mounting holes, minimum. See **Figure 6 on the next page**, for all mounting hole locations.



**Figure 5. Swivel Top Linear-Lift™ Installation (vertical wall view of Cable Version Shown)**

## Linear Lift™ without Swivel Pulleys

When mounting the Linear Lift™ without swivel pulleys make sure that the Cables come straight out of the end of the lift (**Figure 6**). If the Cables are at too much of an angle it can cause damage to the Lift or Cable breakage.

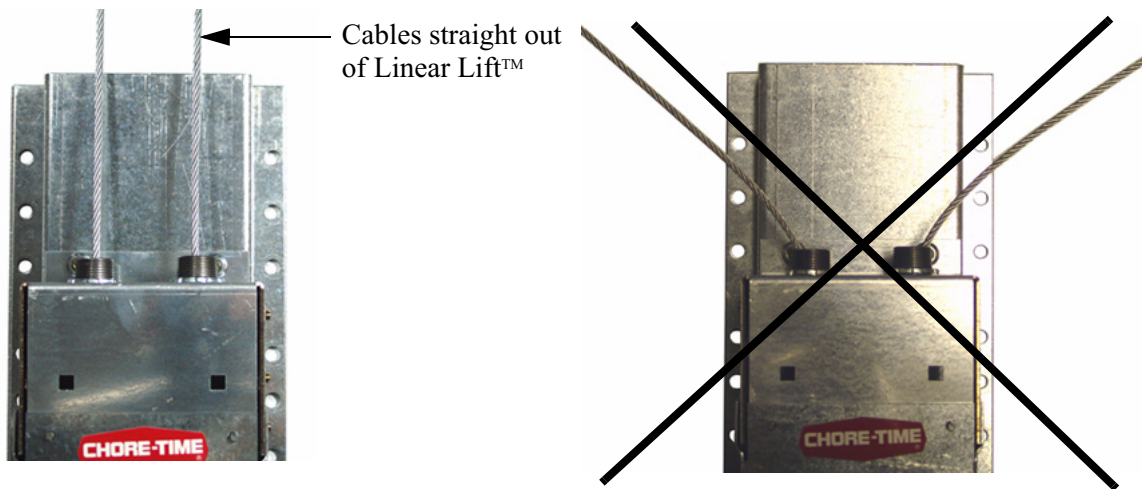


Figure 6. Linear Lift™ without pulleys

## Ceiling Installations

The Swivel Top Linear-Lift™ is designed to be mounted on any ceiling where the slope of the ceiling is 2:12 or steeper (**See Figure 7 below**). This allows the cable to be routed off the end of the unit for systems where whole house control of both sides of the house with one unit is needed. Use (8) 3/8" Lag Screws, (included in Hardware Package), to attach the unit to the ceiling.

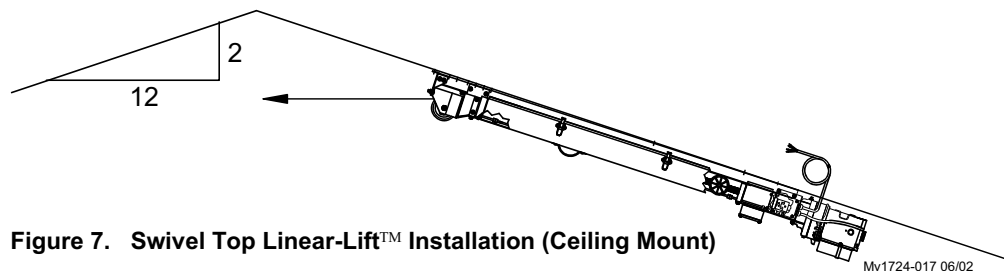


Figure 7. Swivel Top Linear-Lift™ Installation (Ceiling Mount)

If the LIFT is to be installed on the ceiling, the vent plug must be installed next to the ceiling (upward) once mounted. Replace the vent plug with the solid steel plug from the opposite side of the gear housing. Refill oil in the gear housing before operating. (**See Figure 8**) For additional information, **See Figure 14, on Page 15**.

It may be necessary to provide a recess in the mounting surface for clearance of the 90° Elbow and vent plug, or by mounting the Swivel Top Linear-Lift™ on 2 x 10 lumber as shown for vent plug clearance (**Figure 8 below**).

Item	Description	Part No.
1	Power Unit	Varies (See Page 21, and 23)
2	Swivel Top Linear-Lift	Varies
3	1-1/2" Lumber	
4	90° Elbow	15405
5	Vent Plug	3523

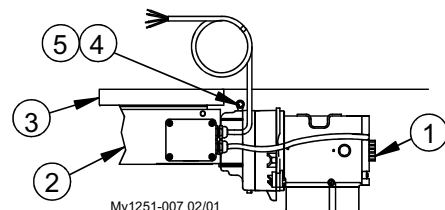


Figure 8. Swivel Top Linear-Lift Installation (ceiling mount)

Mounting Hole Locations

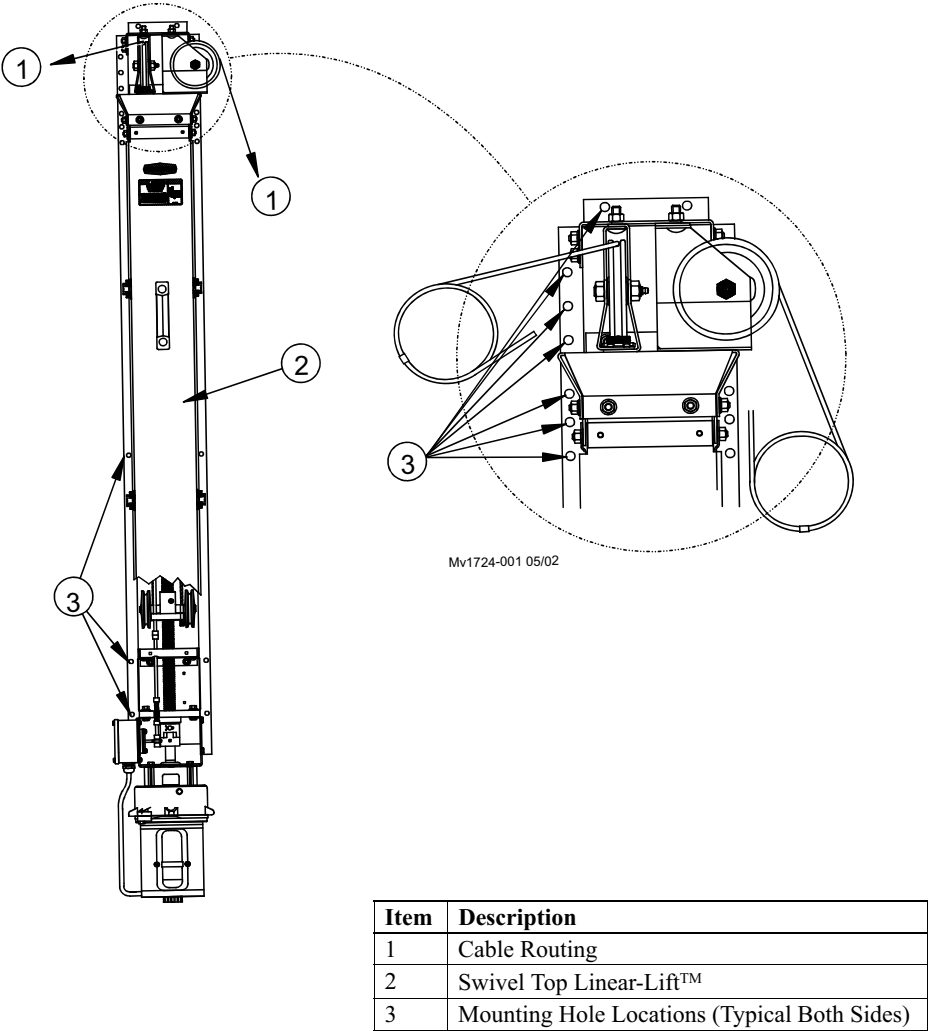
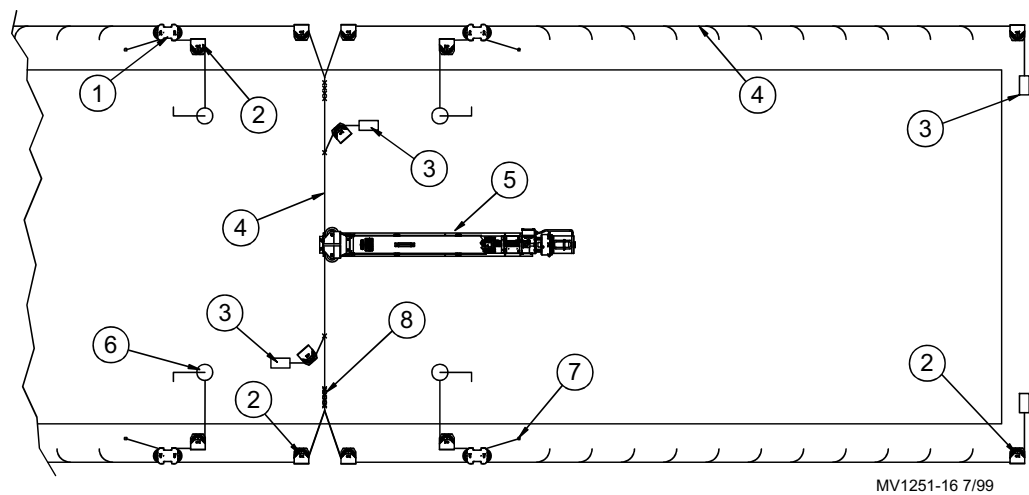


Figure 9. Swivel Top Linear-Lift™ Mounting Hole Locations

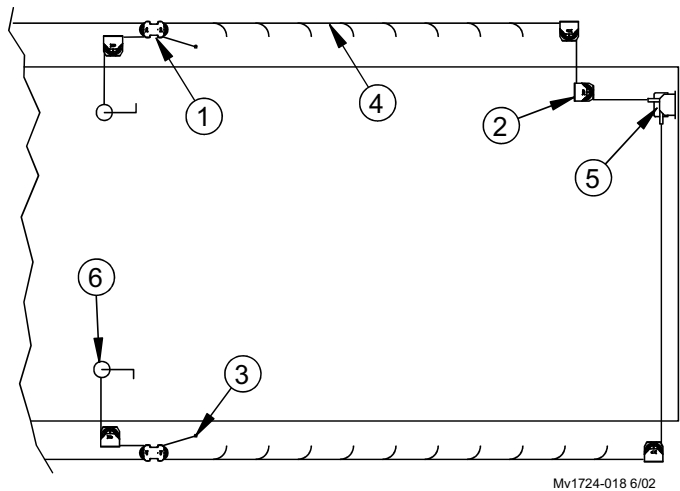
Ceiling Mount Swivel Top Linear-Lift™ Installation



Item	Description	Part No.
1	Pulley Assembly NY 3.5	27772
2	Single Pulley Assembly	27301
3	Anti-Slack Weight or Spring	41143
4	Curtain Cable (7 * 19-3/16" Dia.) Recommended	13976
5	Swivel Top Linear-Lift™	Varies
6	Hand Winch Winch Mounting Assembly	1212 1193
7	Tie Down	
8	(3) Cable Clamp	732

Figure 10. Ceiling Mounted Swivel Top Linear-Lift™ pulling (2) curtains (top view) with a 1:1 double-back cable arrangement

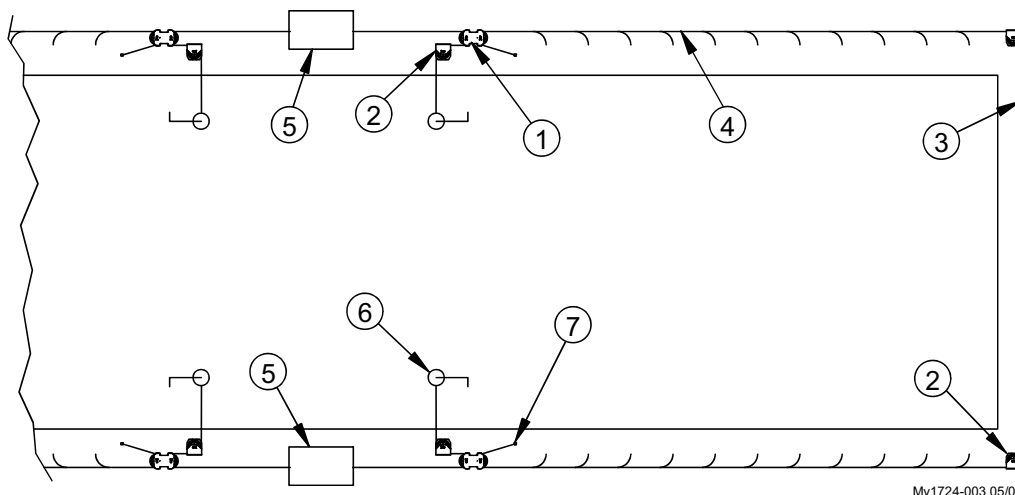
Two-Side Tunnel Curtain Application



Item	Description	Part No.
1	Pulley Assembly NY 3.5	27772
2	Single Pulley Assembly	27301
3	Tie Down	
4	Curtain Cable (7 * 19-3/16" Dia.) Recommended	13976
5	Swivel Top Linear-Lift™	Varies
6	Hand Winch Winch Mounting Assembly	1212 1193

Figure 11. Wall Mounted (Corner) Swivel Top Linear-Lift™ pulling (2) curtains (top view)

## Side Wall Swivel Top Linear-Lift™ Installation

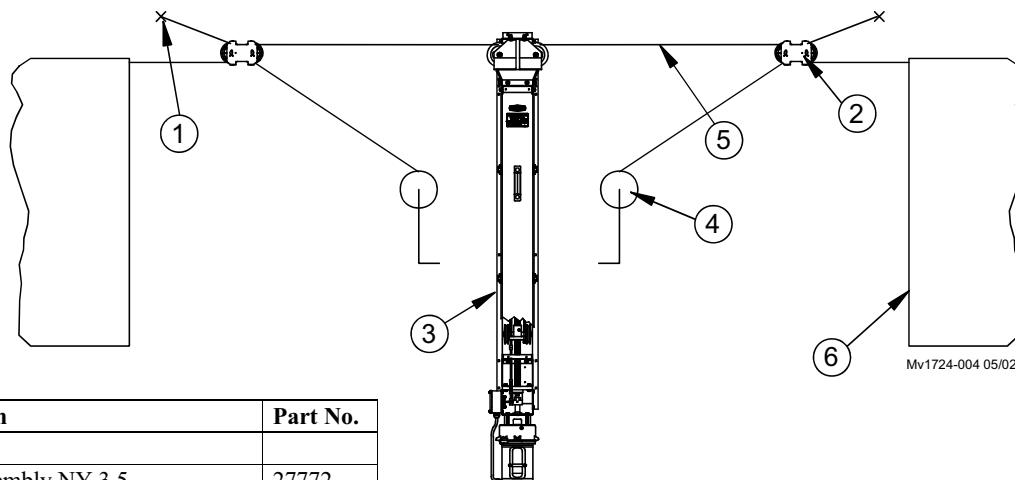


Mv1724-003 05/02

Item	Description	Part No.
1	Pulley Assembly NY 3.5	27772
2	Single Pulley Assembly	27301
3	Anti Slack Weight or Spring	41143
4	Curtain Cable (7 * 19-3/16" Dia.) Recommended	13976
5	Swivel Top Linear-Lift™	Varies
6	Hand Winch Winch Mounting Assembly	1212 1193
7	Tie Down	

Figure 12. Side Wall Swivel Top Linear-Lift with a 1:1 double-back cable arrangement (top view)

## Side Wall Swivel Top Linear-Lift Installation



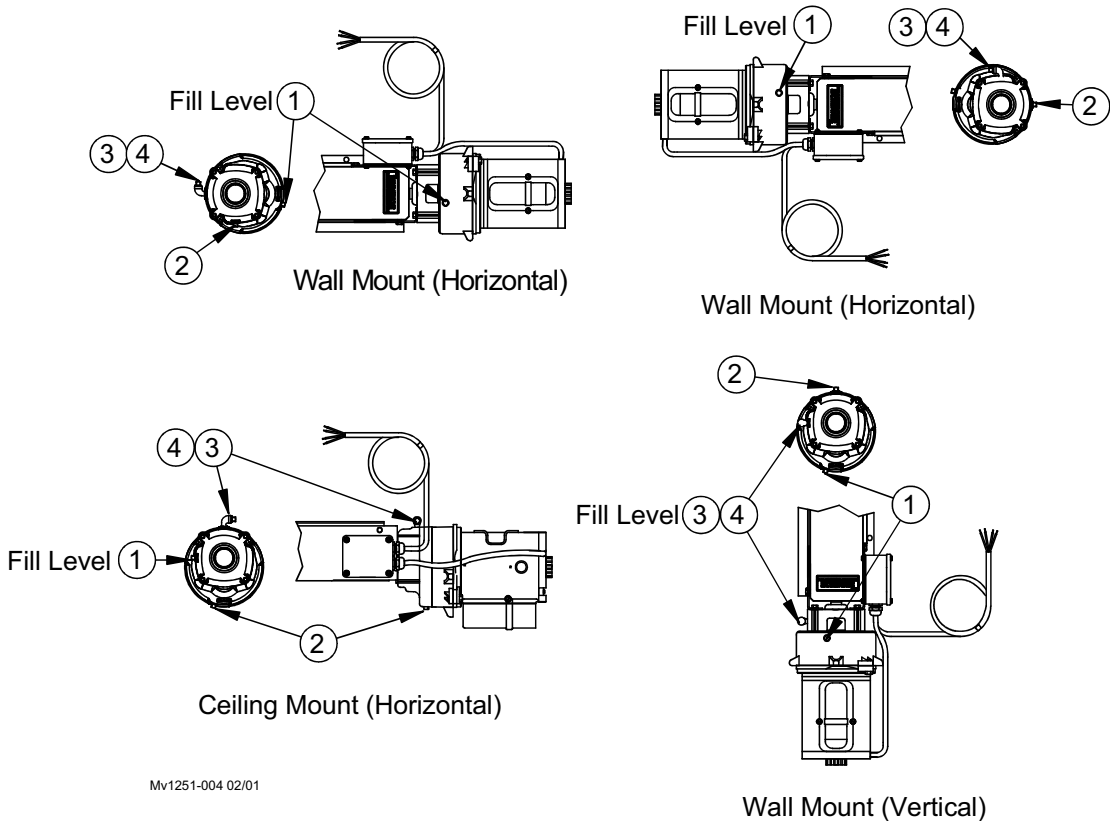
Mv1724-004 05/02

Item	Description	Part No.
1	Tie Down	
2	Pulley Assembly NY 3.5	27772
3	Swivel Top Linear-Lift™	Varies
4	Hand Winch Winch Mounting Assembly	1212 1193
5	Curtain Cable (7 * 19-3/16" Dia.) Recommended	13976
6	Curtain	

Figure 13. Side Wall Swivel Top Linear-Lift™ with a 1:1 double-back cable arrangement (front-view)

# Alternative Vent Plug Locations for Various Swivel Top Linear-Lift Mountings

Refer to the four mounting diagrams shown (Figure 13) to determine the correct Vent Plug location.



Item	Description	Part No.
1	1/4 Solid Pipe Plug	2755
2	1/4 Pipe Plug (Magnetic)	30160
3	1/4 Vent Plug	3523
4	90° Elbow	15405

Figure 14. Vent Plug and Fill Level Locations

## Oil Recommendation

The gearhead contains 13.5 oz. of SAE 40 oil.

For horizontal and ceiling mounted Swivel Top Linear-Lifts, fill the oil to the fill hole. For vertical mounted Swivel Top Linear-Lifts fill the oil to approximately 2 ounces above the fill hole. **See Figure 14** for oil fill locations.

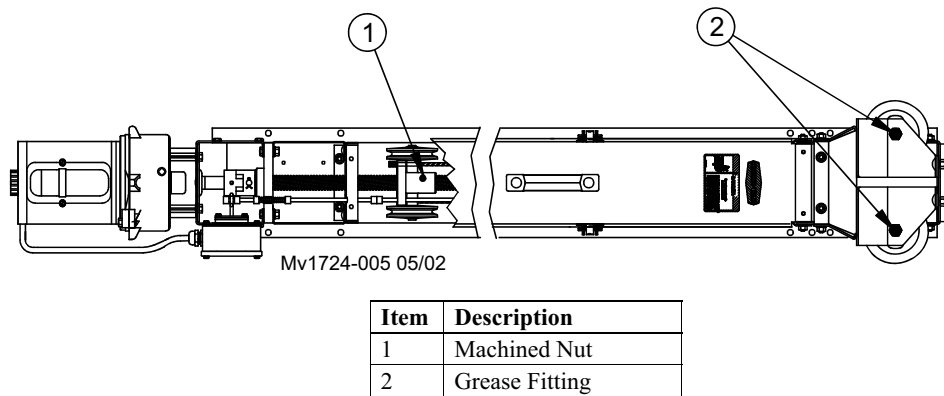
## Grease Recommendation

The Swivel Top Linear-Lift is fully greased at the factory. However, for maximum life, Chore-Time strongly recommends greasing the Swivel Top Linear-Lift at each grease fitting monthly.

Recommended Grease: Sunoco Construction Grease, Mobile CMP Grease, or similar water-resistant with molybdenum, extreme pressure (E.P.) grease. **(See Figure 15)**

**Important ! Grease Fittings on the Bronze Machined Nut and Pulleys are not labyrinth sealed. Apply grease liberally. Also apply grease to Threaded Rod across full length.**

**Important ! Grease every 30 days for maximum life.**



**Figure 15. Swivel Top Linear-Lift™ Critical Grease Fitting Locations (horizontal wall mount)**



# Swivel Top Linear-Lift™ Stop Switch Adjustment

The Swivel Top Linear-Lift™ has two adjustable stops (Set Collars) that may be moved to accommodate a variety of curtain opening sizes.

A 3/32" Allen wrench is required to loosen the set screw on the Set Collar (**Items 2 and 3, Figure 16**). Slide the Set Collar(s) on the Switch Rod to the desired limits of Inlet operation or Curtain travel (**Figure 16**). Two Collars are supplied for each limit of travel for best grip and shut off.

**Important !    Do not adjust the four Collars on the rod nearest the Motor. These are set at the factory for switch operation and do not require moving.**

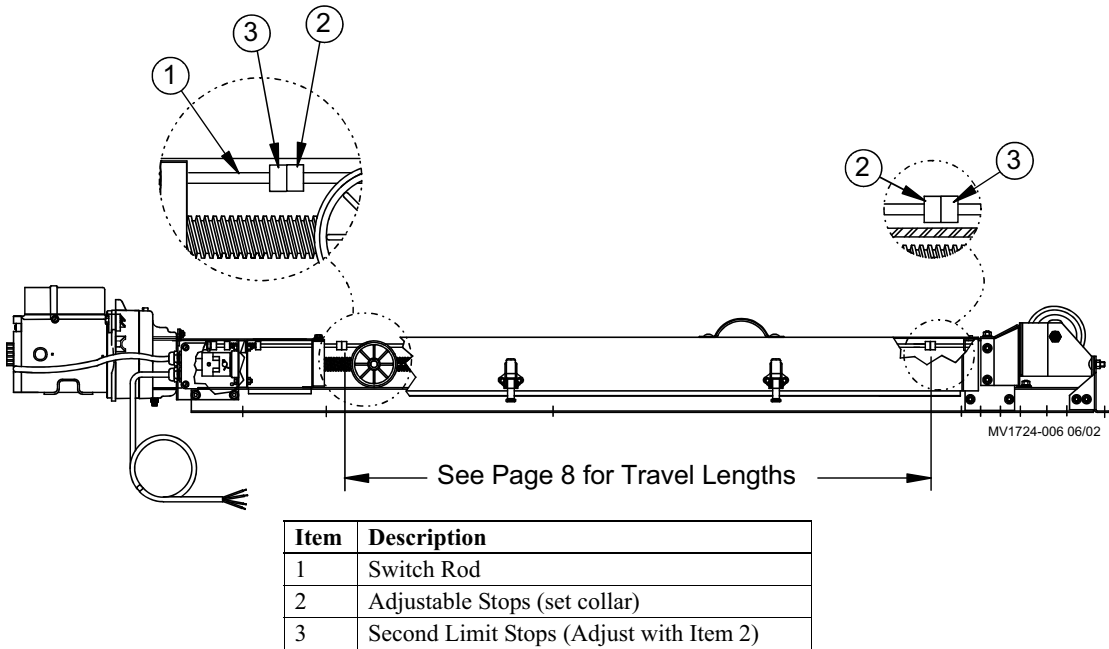


Figure 16. LINEAR-LIFT™ Adjustment (side view)

# Wiring Diagrams

## Limit Switch and Schematic Diagram for Standard & Chain Models

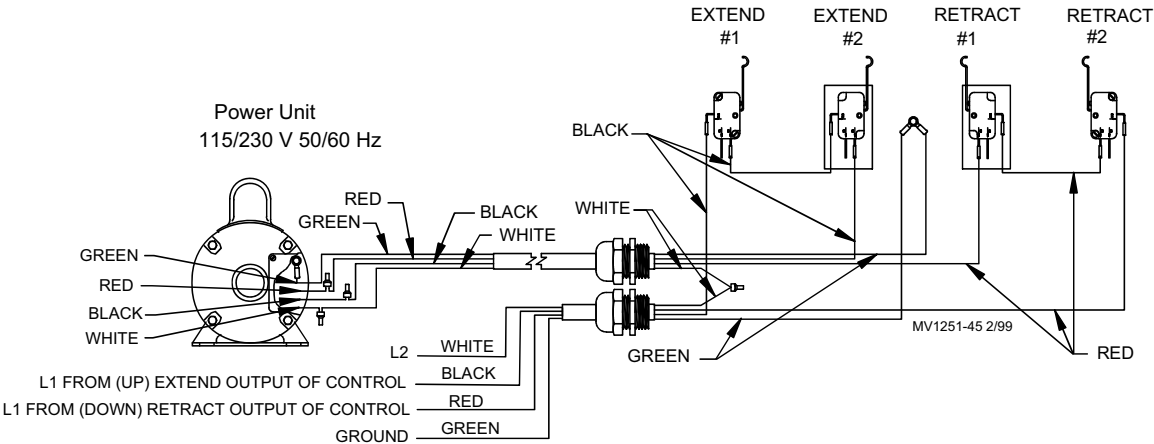
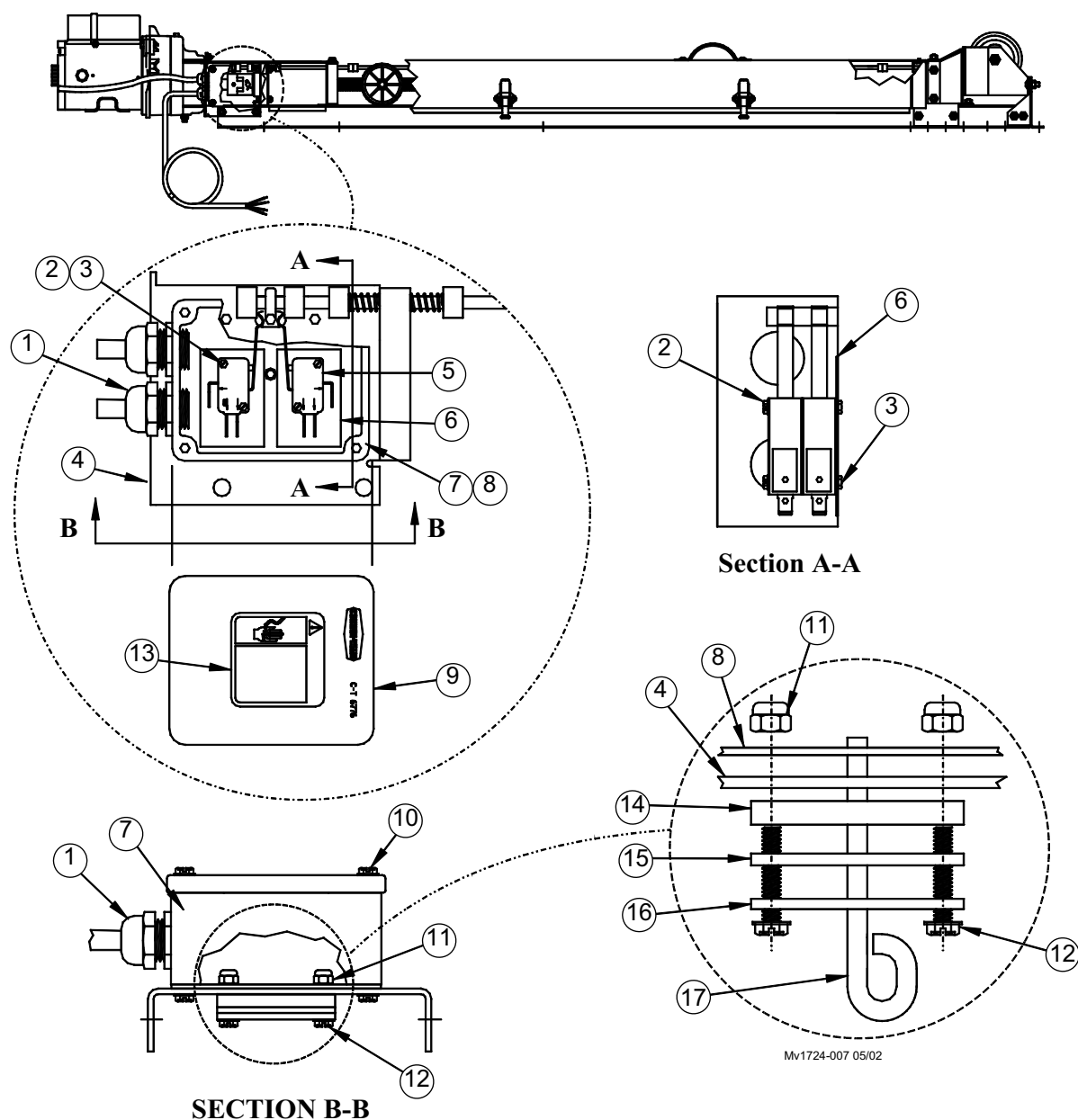


Figure 17. 2-Switch Wiring Diagram

## Swivel Top Linear-Lift Switch Assemblies

## Swivel Top Linear-Lift™ Switch Assembly #47875

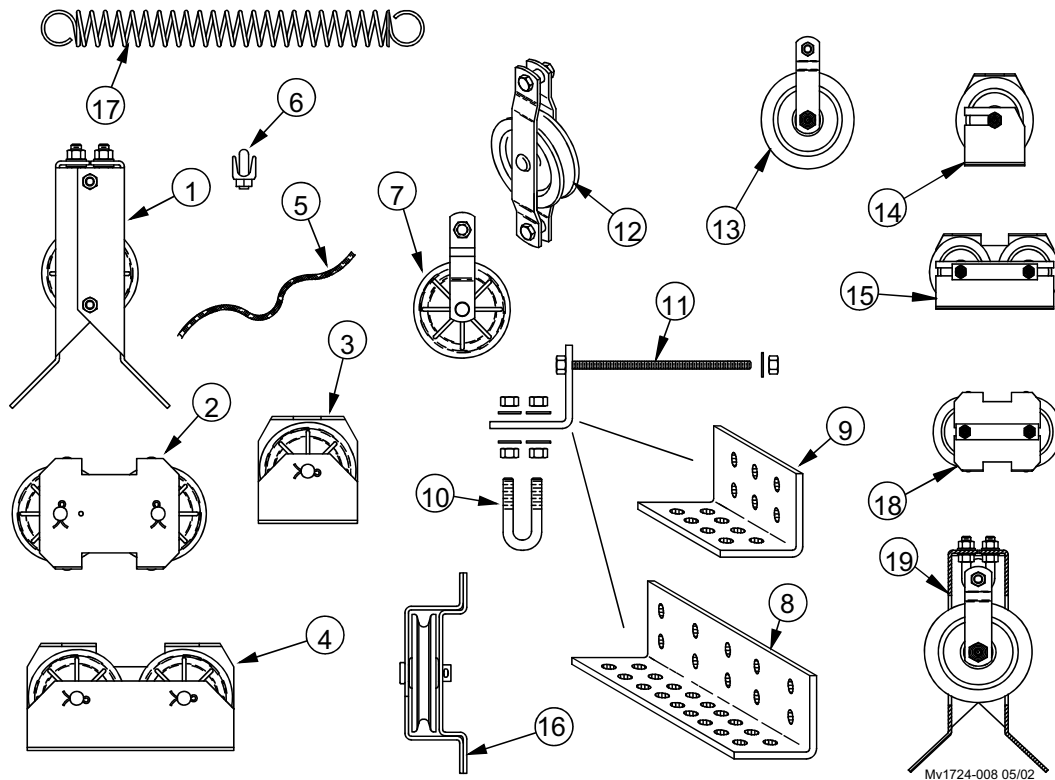


Item	Description	Part No.
1	Liquid Tight Connector	23779
2	Pan Head Screw 4-40x1	41822
3	Hex Nut 4-40	3511
4	Swivel Top Linear-Lift™ Motor Brkt Rh	47761
5	Switch, Micro	46324
6	Switch Insulation	1907-8
7	Terminal Box	36334
8	Gasket	6777
9	Switch Box Cover	6776

Item	Description	Part No.
10	Twin Helix Screw #10x.75	6980
11	#10-24 Lock Nut	34019
12	Hex Screw Sltd. #10-24	4416-6
13	Danger Decal	2527-35
14	Poly Switch Plate	38802
15	Neoprene Switch Plate	38801
16	Switch Plate	38803
17	Switch Hook	38804

**Figure 18. Switch Assembly**

## Optional Pulleys and Accessories



Item	Description	Part No.
1	3.5" Corner Pulley Assembly	35597
2	3.5" Double Pulley Assembly	27772
3	3.5" Pulley Kit	27301
4	3.5" Center Pulley Assembly	27302
5	3/16" Cable (150')—7 * 19 Weave	13976
6	3/16" Cable Clamp	732
7	3.5" Pulley Assembly	2500
8	Double Pulley Mounting Brkt.	35404
9	Single Pulley Mounting Brkt.	35405
10	3/8-16 x 2.5" U Bolt with Nuts	35602
11	5/16-18x7" Bolt	4412-20
12	3.5" Double Eye Pulley	2501
13	4.5" Steel Pulley Assembly	43005
14	4.5" Steel Single Pulley Assembly	43128
15	4.5" Steel Double Pulley Assembly	43129
16	3.5" Pulley Assembly	28429
17	Inlet Spring	41143
18	4.5" Steel Double Pulley Assembly	43130
19	4.5" Steel Corner Pulley Assembly	43131

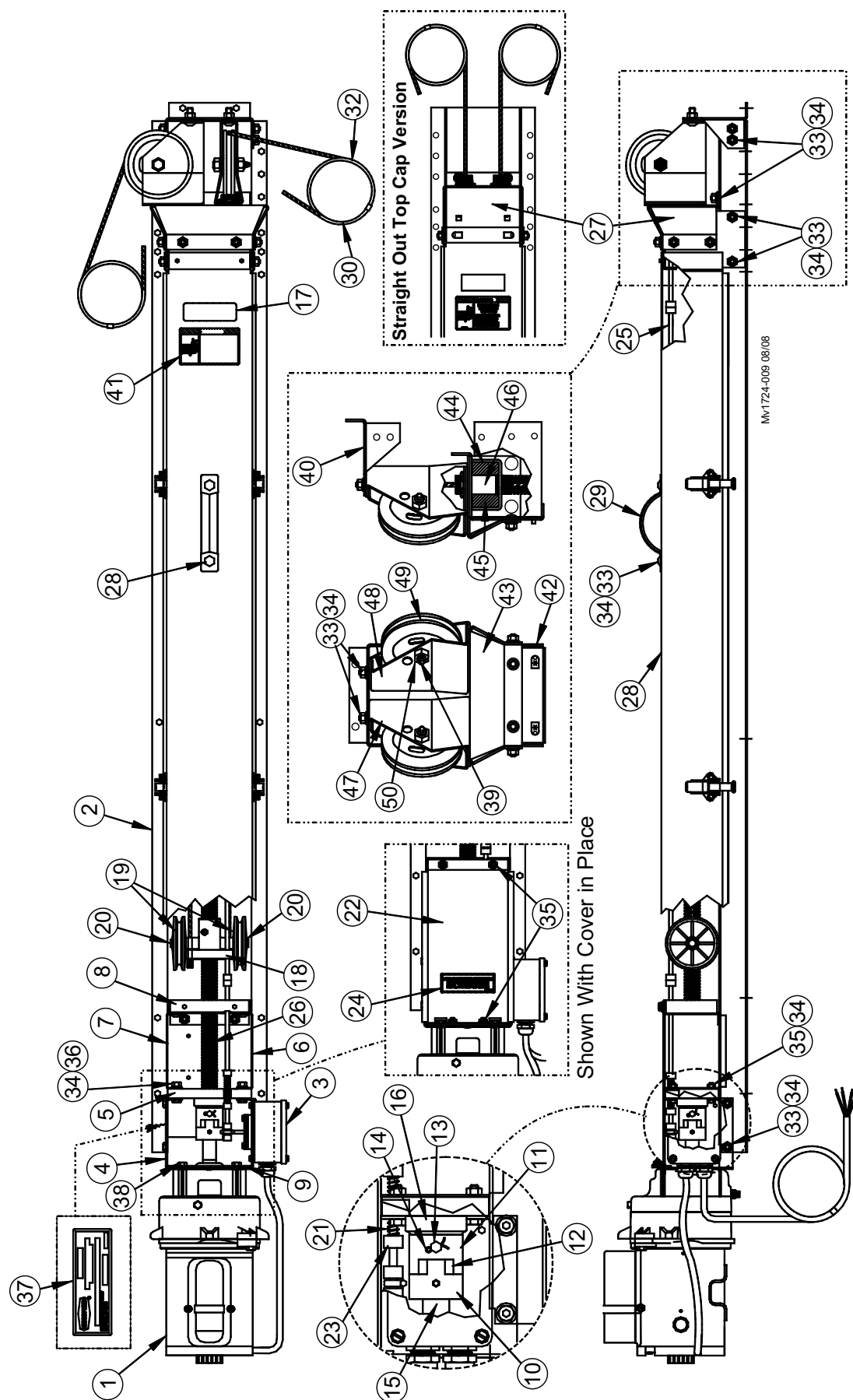
**Figure 19. Pulley Options**

Items 7, 8, 10, & 11—may be ordered as a Double Pulley Bracket Kit. Part No. 35600.

Items 7, 9, 10, & 11—may be ordered as a Single Pulley Bracket Kit. Part No. 35598.

## Swivel Top Linear-Lift™ Drawings and Parts Listings

# Standard, 47859-Series Drawing

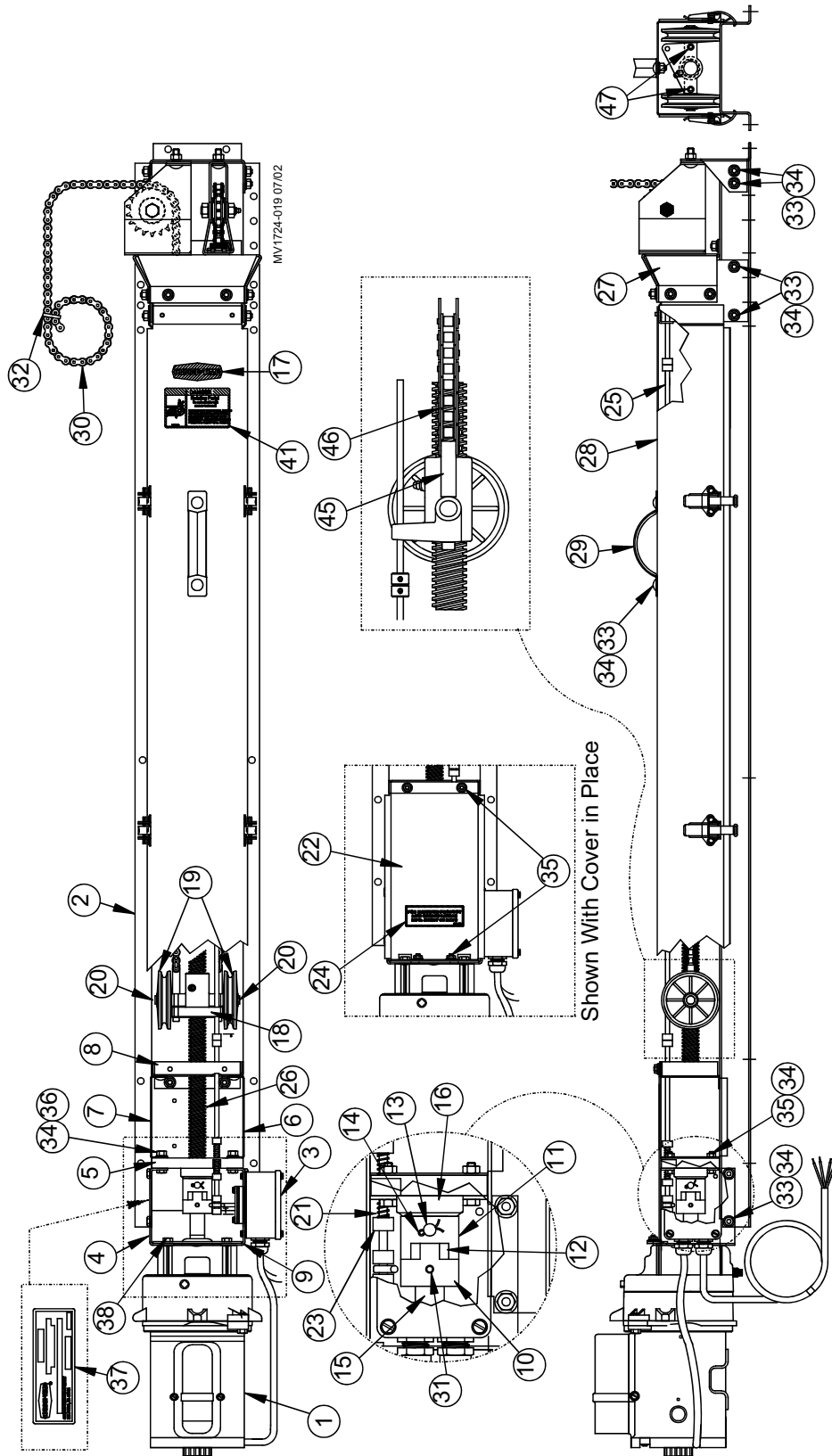


## Standard, 47859-Series Parts Listing

Item	Description	Part No.
1	115 Volt Motor (60RPM) 230 Volt Motor (60 RPM) 230 Volt Motor (30 RPM)	42780 36370 48821
2	Swivel Top Linear-Lift™ Base 26" 36" 48" 66"	47836-26 47836-36 47836-48 47836-66
3*	Linear-Lift™ Switch	47875
4	L.H. Linear-Lift™ Motor Bracket	47762
5	Linear-Lift™ Thrust Bracket	47763
6	R.H. Linear-Lift™ Panel	47771-2
7	L.H. Linear-Lift™ Panel	47771-1
8	Linear-Lift™ Swivel Partition	47772
9	Linear-Lift™ Cover Bracket	47834
10	Flexible Type L Coupling	36363-2
11	Flexible (Mach.) Coupling	35944
12	"SOX" Spider Spacer	36333
13	5/16 x 2 Clevis Pin	36466-1
14	.125 x .75 Cotter Pin	2663
15	3/16 x 1 Square Key	2112-1
16	Industrial Thrust Bearing	36397
17	Chore-Time Decal	2525-4
18	Machined Linear-Lift™ Nut	47759
19	Red Pulley Wheel	2503
20	Retainer Ring	41525
21	Compression Spring	49813
22	Lower Linear-Lift™ Cover	47835-1
23	Set Collar	41857
24	Grease Decal	2529-634
25	Linear-Lift™ Switch Rod 26" 36" 48" 66"	E1401-36.50 E1401-46.50 E1401-58.50 E1401-76.50
26	1-5 Threaded Acme Shaft 26" 36" 48" 66"	47856-26 47856-36 47856-48 47856-66
27	Swivel Top Pulley Assembly Straight Out Top Cap Assembly	47876 50559
28	Linear-Lift™ Cover Assembly 26" 36" 48" 66"	47873-26 47873-36 47873-48 47873-66
29	Handle	3-12194
30	25' Linear-Lift™ Cable	47658
31	8-32 Set Screw	42728
32	Cable Tie	6635
33	5/16-18 x .625 Carriage Bolt	8282
34	5/16-18 Hex Flange Nut	8490
35	1/4-20 Hex Flange Nut	24208
36	5/16 x 18 x 1.25 Bolt	2150
37	Linear-Lift™ Decal	Varies
38	5/16 -18 x .50 Bolt	1839
39	4.5" Pulley Shaft Assembly	43112
40	Swivel Support Bracket	47839
41	Danger (Rotating Parts) Decal	2527-10
42	Linear-Lift™ End Box Bracket	47779V
43	Platform End Swivel Bracket	47780
44	Linear-Lift™ Swivel Bracket	47783
45	Linear-Lift™ Swivel Pilot	47789
46	3/4 x 3.00 Pipe Nipple	47785
47	Outer Swivel Top Pulley Bracket	47781
48	Inner Swivel Top Pulley Bracket	47782
49	4.5" Pulley Assembly	42498
50	1/2" Lock Nut	8917

\*See Figure 18 for exploded view of parts.

## Chain Drive, 48028-Series Drawing



## Chain Drive, 48028-Series Parts Listing

Item	Description	Part No.
1	115 Volt Motor (60RPM)	42780
	230 Volt Motor (60 RPM)	36370
	230 Volt Motor (30 RPM)	48821
2	Swivel Top Linear-Lift™ Base	
	26"	47836-26
	36"	47836-36
	48"	47836-48
	66"	47836-66
3*	Linear-Lift™ Switch	47875
4	L.H. Linear-Lift™ Motor Bracket	47762
5	Linear-Lift™ Thrust Bracket	47763
6	R.H. Linear-Lift™ Panel	47771-2
7	L.H. Linear-Lift™ Panel	47771-1
8	Linear-Lift™ Swivel Partition	47772
9	Linear-Lift™ Cover Bracket	47834
10	Flexible Type L Coupling	36363-2
11	Flexible (Mach.) Coupling	35944
12	"SOX" Spider Spacer	36333
13	5/16 x 2 Clevis Pin	36466-1
14	.125 x .75 Cotter Pin	2663
15	3/16 x 1 Square Key	2112-1
16	Industrial Thrust Bearing	36397
17	Chore-Time Decal	2525-4
18	Machined Linear-Lift™ Nut	47759
19	Red Pulley Wheel	2503
20	Retainer Ring	41525
21	Compression Spring	49813
22	Lower Linear-Lift™ Cover	47835-1
23	Set Collar	41857
24	Grease Decal	2529-634
25	Linear-Lift™ Switch Rod	
	26"	E1401-36.50
	36"	E1401-46.50
	48"	E1401-58.50
	66"	E1401-76.50

Item	Description	Part No.
26	1-5 Threaded Acme Shaft	
	26"	47856-26
	36"	47856-36
	48"	47856-48
	66"	47856-66
27	Swivel Top Pulley Assembly	47876
	Swivel Top Sprocket Assembly	47866
	Top Cap Assembly	50559
28	Linear-Lift™ Cover Assembly	
	26"	47873-26
	36"	47873-36
	48"	47873-48
	66"	47873-66
29	Handle	3-12194
30	Drive Chain	
	26"	21045-14
	36"	21045-15
	48"	21045-27
	66"	21045-39
31	8-32 Set Screw	42728
32	Cable Tie	6635
33	5/16-18 x .625 Carriage Bolt	8282
34	5/16-18 Hex Flange Nut	8490
35	1/4-20 Hex Flange Nut	24208
36	5/16 x 18 x 1.25 Bolt	2150
37	Linear-Lift™ Decal	Varies
38	5/16 -18 x .50 Bolt	1839
41	Danger (Rotating Parts) Decal	2527-10
45	Chain Connecting Rod	44417
46	Connecting Link (#40)	20017
47	1/4-20 x 2-1/4 SH Cap Screw	5083-2

\*See Figure 18 for exploded view of parts.



**Made to work.  
Built to last.**

Note: The original, authoritative version of this manual is the [English] version produced by CTB, Inc. or any of its subsidiaries or divisions, (hereafter collectively referred to as "CTB"). Subsequent changes to any manual made by any third party have not been reviewed nor authenticated by CTB. Such changes may include, but are not limited to, translation into languages other than [English], and additions to or deletions from the original content. CTB disclaims responsibility for any and all damages, injuries, warranty claims and/or any other claims associated with such changes, inasmuch as such changes result in content that is different from the authoritative CTB-published [English] version of the manual. For current product installation and operation information, please contact the customer service and/or technical service departments of the appropriate CTB subsidiary or division. Should you observe any questionable content in any manual, please notify CTB immediately in writing to: CTB Legal Department, P.O. Box 2000, Milford, IN 46542-2000 USA.

### **Revisions to this Manual**

<b>Page No.</b>	<b>Description of Change</b>
11	Added Figure showing without Swivel Pulley version, added Swivel Top Parts to BOM.

**Contact your nearby Chore-Time distributor or representative for additional parts and information.**

**CTB Inc.**  
**P.O. Box 2000 • Milford, Indiana 46542-2000 • U.S.A.**  
**Phone (574) 658-4101 • Fax (877) 730-8825**  
**E-Mail: [ctb@ctbinc.com](mailto:ctb@ctbinc.com) • Internet: <http://www.ctbinc.com>**

**Printed in the U.S.A.**