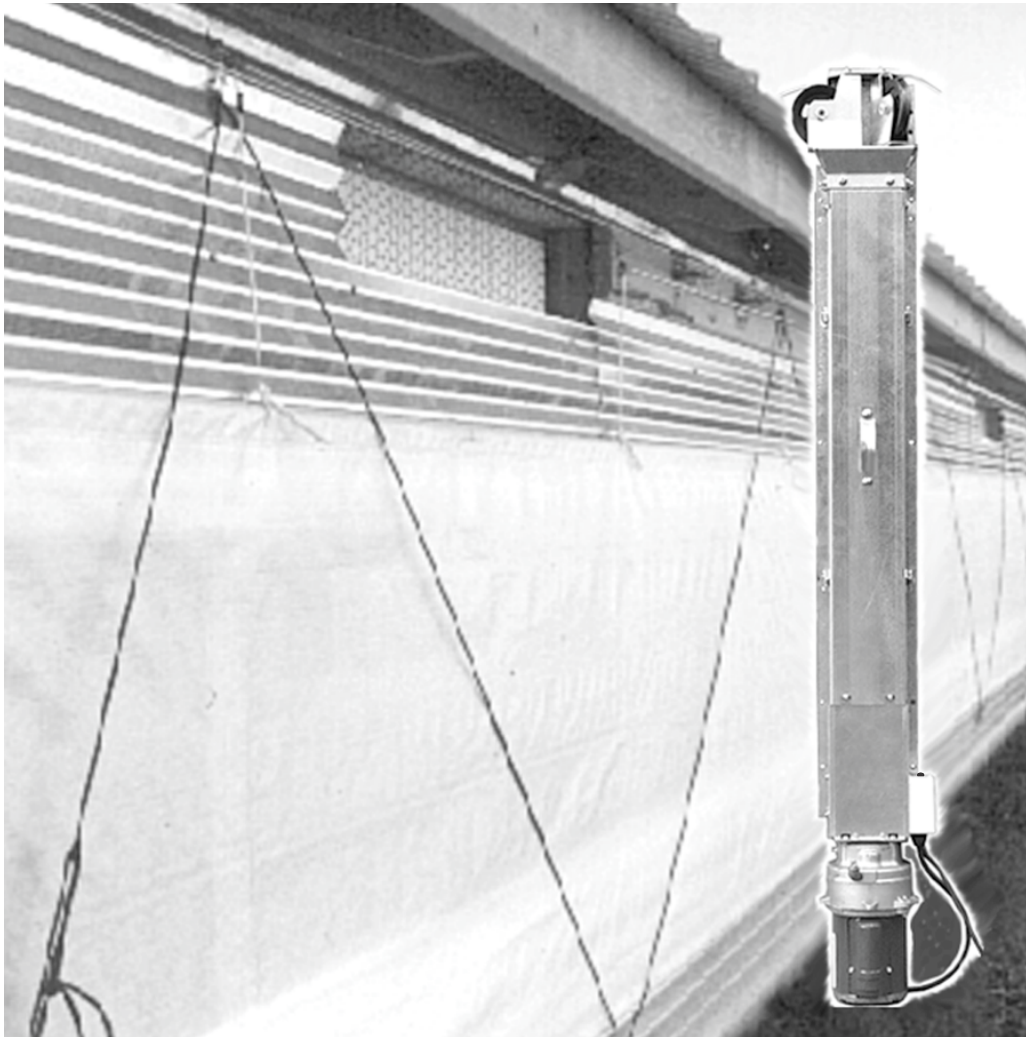


Swivel Top Linear-Lift™

Installation & Operator's Instruction Manual



Mv1724-011 06/02

Contents

Topic	Page
Limited Warranty	3
General	4
Support Information	4
Distributor and Installer Information	4
About This Manual	4
Safety Information	5
Safety—Alert Symbol	5
Understanding Signal Words	5
Follow Safety Instructions	5
Decal Descriptions	5
DANGER: Electrical Hazard	5
DANGER: Moving Parts	5
Introduction and Layout Diagrams	6
Tools RequiredCable/Pulley Combinations	6
Available Sizes and Speed of Operation	7
Linear-Lift Installation	8
Swivel Top Pulley/Sprocket Angle Adjustment (Cable Version)	8
Swivel Top Pulley/Sprocket Angle Adjustment (Chain Version)	8
"Straight-Off" Cable/Chain Routing Systems	9
Linear Lift™ without Swivel Pulleys	9
Ceiling Installations	10
Mounting Hole Locations	10
Ceiling Mount Swivel Top Linear-Lift™ Installation	11
Two-Side Tunnel Curtain Application	11
Side Wall Swivel Top Linear-Lift™ Installation	12
Side Wall Swivel Top Linear-Lift™ Installation	12
Alternative Vent Plug Locations for Various Swivel Top Linear-Lift™ Mountings	13
Oil Recommendation (Bronze Nut Units)	13
Removal of Motor Drain Plug for Wall Mounted Units	14
Grease Recommendation (Bronze Nut Units)	15
Swivel Top Linear-Lift™ Stop Switch Adjustment	15
Wiring	16
Switch Wiring	16
Wiring 2 (230V) Linear Lifts™ in Parallel (To Prevent Back-feed between Lifts)	17
Wiring 2 (115V) Linear Lifts™ in Parallel (To Prevent Back-feed between Lifts)	18
Optional Pulleys and Accessories	19
Part Numbers	20
Linear-Lift™ Switch Assembly #47875	20
Swivel Top Linear-Lift™ Drawings and Parts Listings	22
Power Unit Part Numbers	28

Limited Warranty

Chore-Time Group, a division of CTB, Inc. ("Chore-Time") warrants each new CHORE-TIME Linear Lift™ manufactured by Chore-Time to be free from defects in material or workmanship under normal usage and conditions, for One (1) year from the date of installation by the original purchaser ("Warranty"). If such a defect is determined by Chore-Time to exist within the applicable period, Chore-Time will, at its option, (a) repair the Product or Component Part free of charge, F.O.B. the factory of manufacture or (b) replace the Product or Component Part free of charge, F.O.B. the factory of manufacture. This Warranty is not transferable, and applies only to the original purchaser of the Product.

CONDITIONS AND LIMITATIONS

THIS WARRANTY CONSTITUTES CHORE-TIME'S ENTIRE AND SOLE WARRANTY AND CHORE-TIME EXPRESSLY DISCLAIMS ANY AND ALL OTHER WARRANTIES, INCLUDING, BUT NOT LIMITED TO, EXPRESS AND IMPLIED WARRANTIES, INCLUDING, WITHOUT LIMITATION, WARRANTIES AS TO MERCHANTABILITY OR FITNESS FOR PARTICULAR PURPOSES. CHORE-TIME shall not be liable for any direct, indirect, incidental, consequential or special damages which any purchaser may suffer or claim to suffer as a result of any defect in the Product. Consequential or Special Damages as used herein include, but are not limited to, lost or damaged products or goods, costs of transportation, lost sales, lost orders, lost income, increased overhead, labor and incidental costs, and operational inefficiencies. *Some jurisdictions prohibit limitations on implied warranties and/or the exclusion or limitation of such damages, so these limitations and exclusions may not apply to you. This warranty gives the original purchaser specific legal rights. You may also have other rights based upon your specific jurisdiction.*

Compliance with federal, state and local rules which apply to the location, installation and use of the Product are the responsibility of the original purchaser, and CHORE-TIME shall not be liable for any damages which may result from non-compliance with such rules.

The following circumstances shall render this Warranty void:

- Modifications made to the Product not specifically delineated in the Product manual.
- Product not installed and/or operated in accordance with the instructions published by CHORE-TIME.
- All components of the Product are not original equipment supplied by CHORE-TIME.
- Product was not purchased from and/or installed by a CHORE-TIME authorized distributor or certified representative.
- Product experienced malfunction or failure resulting from misuse, abuse, mismanagement, negligence, alteration, accident, or lack of proper maintenance, or from lightning strikes, electrical power surges or interruption of electricity.
- Product experienced corrosion, material deterioration and/or equipment malfunction caused by or consistent with the application of chemicals, minerals, sediments or other foreign elements.
- Product was used for any purpose other than for the care of poultry and livestock.

The Warranty and Extended Warranty may only be modified in writing by an officer of CHORE-TIME. CHORE-TIME shall have no obligation or responsibility for any representations or warranties made by or on behalf of any distributor, dealer, agent or certified representative.

Effective: **September 2014**

Chore-Time Group. A division of CTB, Inc.
PO Box 2000
Milford, Indiana 46542-2000 USA
Phone (574) 658-4101 Fax (877) 730-8825
E-mail: www.choretimepoultry.com
Internet: poultry@choretime.com

General

Support Information

The Chore-Time Swivel Top Linear-Lift™ is designed to open curtains or inlet doors. Using this equipment for any other purpose or in a way not within the operating recommendations specified in this manual will void the warranty and may cause personal injury.

This manual is designed to provide comprehensive planning, installation, safety, operation, and parts listing information. The Table of Contents provides a convenient overview of the information in this manual. The Table of Contents also specifies which pages contain information for the sales personnel, installer, and consumer (end user).

Distributor and Installer Information

Please fill in the following information about your Product.
Keep this manual in a clean, dry place for future reference.

Distributor's Name _____

Distributor's Address _____

Distributor's Phone _____

Date of Purchase _____

Installer's Name _____

Installer's Address _____

Installer's Phone _____

Date of Installation _____

System Specifications _____

About This Manual

The intent of this manual is to help you in two ways. One is to follow step-by-step in the order of assembly of your product. The other way is for easy reference if you have questions in a particular area.

Important ! Read ALL instructions carefully before starting construction.

Important ! Pay particular attention to all SAFETY information.

•Metric measurements are shown in millimeters and in brackets, unless otherwise specified. " " equals inches and " ' " equals feet in English measurements.

Examples:

1" [25.4]

4' [1 219]

•Optional equipment contains necessary instructions for assembly or operation.

•Major changes from the last printing will be listed on the back cover.

•This Planning Symbol is used in areas where planning needs to take place before construction continues.

•Very small numbers near an illustration (*i.e.*, 1257-48) are identification of the graphic, not a part number.



Safety Information

Caution, Warning and Danger Decals have been placed on the equipment to warn of potentially dangerous situations. Care should be taken to keep this information intact and easy to read at all times. Replace missing or damaged safety decals immediately.

Using the equipment for purposes other than specified in this manual may cause personal injury and/or damage to the equipment.



Safety–Alert Symbol

This is a safety–alert symbol. When you see this symbol on your equipment, be alert to the potential for personal injury. This equipment is designed to be installed and operated as safely as possible...however, hazards do exist.

Understanding Signal Words

Signal words are used in conjunction with the safety–alert symbol to identify the severity of the warning.



DANGER indicates an imminently hazardous situation which, if not avoided, **WILL** result in death or serious injury.



WARNING indicates a potentially hazardous situation which, if not avoided, **COULD** result in death or serious injury.



CAUTION indicates a hazardous situation which, if not avoided, **MAY** result in minor or moderate injury.

Safety Information

Follow Safety Instructions

Carefully read all safety messages in this manual and on your equipment safety signs. Follow recommended precautions and safe operating practices.

Keep safety signs in good condition. Replace missing or damaged safety signs.

Decal Descriptions

DANGER: Electrical Hazard

Disconnect electrical power before inspecting or servicing equipment unless maintenance instructions specifically state otherwise.

Ground all electrical equipment for safety.

All electrical wiring must be done by a qualified electrician in accordance with local and national electric codes.

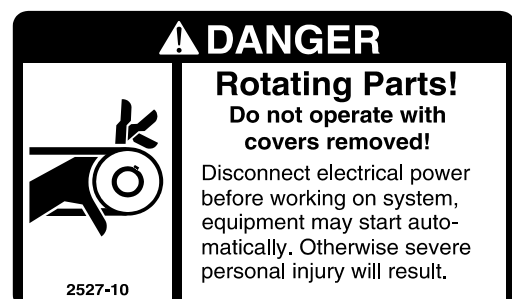
Ground all non-current carrying metal parts to guard against electrical shock.

With the exception of motor overload protection, electrical disconnects and over current protection are not supplied with the equipment

DANGER: Moving Parts

Disconnect electrical power before working on system, equipment may start automatically. Otherwise personal injury will result.

Severe personal injury will result if the equipment is operated without covers properly installed.

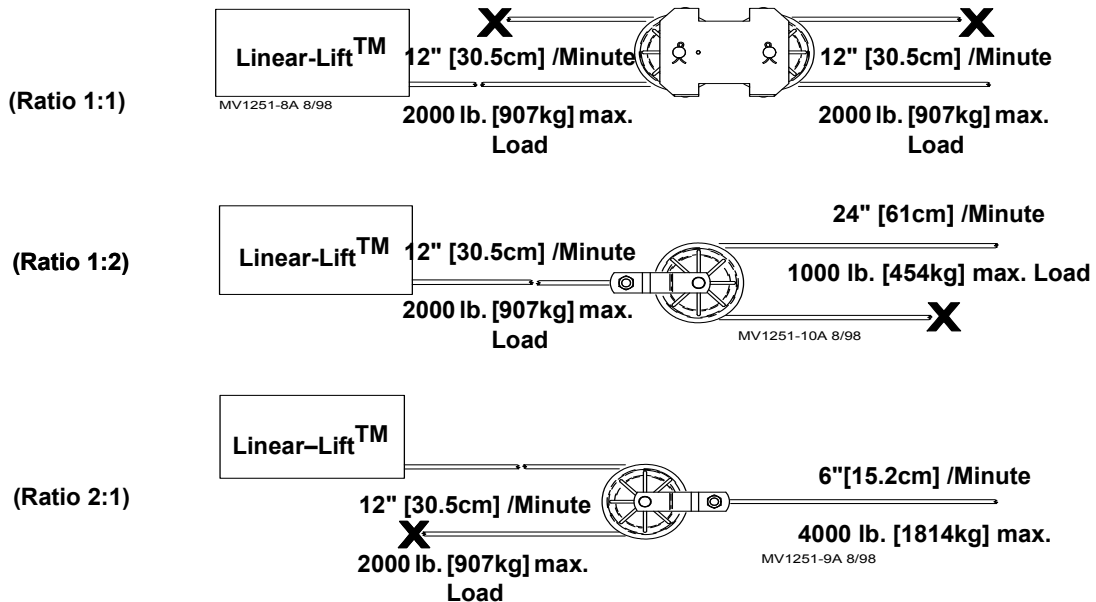


Introduction and Layout Diagrams

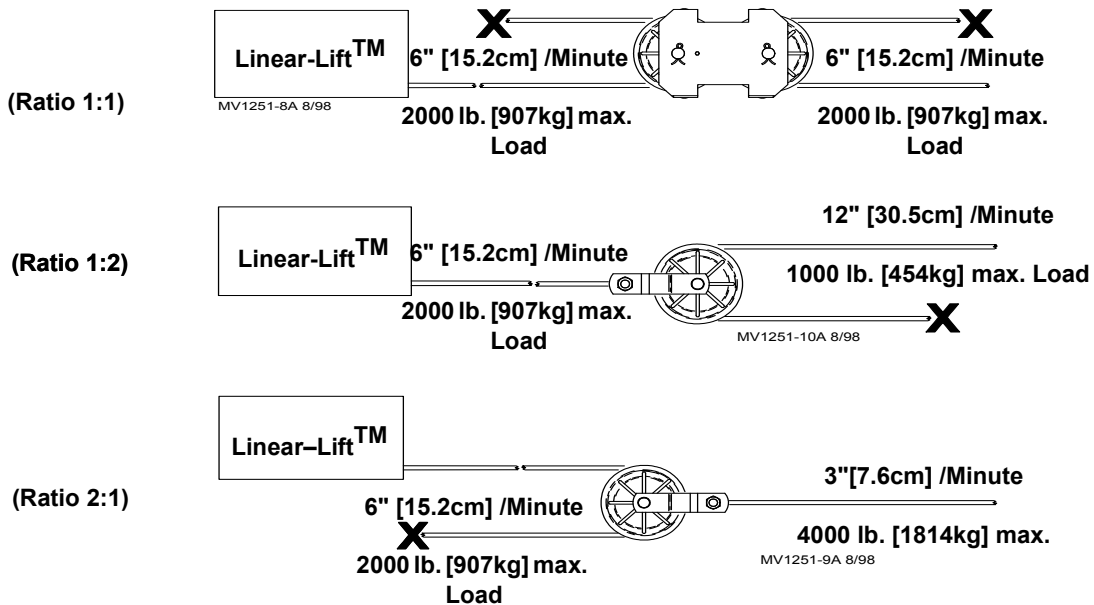
The Swivel Top **Linear-Lift** is designed to open and close Inlet Curtains or Baffle Boards. It may be wired into the ventilation control (i.e. Static Pressure Inlet Control, Chore-Tronics, Super Selector, etc.)

Tools Required/Cable/Pulley Combinations

62 RPM Units



31 RPM Units



- | | | | |
|---|-------------------------------|---|--------------------|
| 1 | 5/16" Nut Driver | 4 | Wire Strippers |
| 2 | Drive Ratchet and 1/2" Socket | 5 | Electrical Wire |
| 3 | Wire Cutters | 6 | 3/32" Allen Wrench |

Figure 1. Tools Required/Pulley Combinations

Available Sizes and Speed of Operation

•The Swivel Top Linear-Lift™ is available in 22", 32", 44", 62", and 72" stroke.

Linear Lift with Brass Nut and Cable: 47859-XXX0 Swivel Top, 47859-XXXL Straight Out Top

62 RPM Version / 12" Per Minute [30.5cm Per Min.]				
Stroke	230 Volt Swivel Top	230 Volt Straight Out Top	115 Volt Swivel Top	115 Volt Straight Out Top
22" Stroke	47859-2260	47859-226L	47859-2160	47859-216L
32" Stroke	47859-3260	47859-326L	47859-3160	47859-316L
44" Stroke	47859-4260	47859-426L	47859-4160	47859-416L
62" Stroke	47859-6260	47859-626L	47859-6160	47859-616L

31 RPM Version / 6" Per Minute [15.2cm Per Min.]		
Stroke	230 Volt Swivel Top	230 Volt/ Straight Out Top
22" Stroke	47859-2230	47859-223L
32" Stroke	47859-3230	47859-323L
44" Stroke	47859-4230	47859-423L
62" Stroke	47859-6230	47859-623L

Linear-Lift, 48028-XXXX, with Brass Nut, Chain, and Swivel Top Sprockets

62 RPM Version / 12" Per Min. [30.5cm Per Min.]		
Stroke	230 Volt	115 Volt
22" Stroke	48028-2260	48028-2160
32" Stroke	48028-3260	48028-3160
44" Stroke	48028-4260	48028-4160
62" Stroke	48028-6260	48028-6160

31 RPM Version / 6" Per Minute [15.2cm Per Min.]	
Stroke	230 Volt
22" Stroke	48028-2230
32" Stroke	48028-3230
44" Stroke	48028-4230
62" Stroke	48028-6230

Linear-Lift with Plastic Nut: 53500-XXX0 Chain & Swivel Sprockets, 53500-XXXL Cable & Straight Out Top

62 RPM Version / 12" Per Min. [30.5cm Per Min.]				
Stroke	230 Volt Swivel Top	230 Volt Straight Out Top	115 Volt Swivel Top	115 Volt Straight Out Top
22" Stroke	53500-2260	53500-226L	53500-2160	53500-216L
32" Stroke	53500-3260	53500-326L	53500-3160	53500-316L
44" Stroke	53500-4260	53500-426L	53500-4160	53500-416L
62" Stroke	53500-6260	53500-626L	53500-6160	53500-616L
72" Stroke	53500-7260	53500-726L	53500-7160	53500-716L

31 RPM Version / 6" Per Minute [15.2cm Per Min.]		
Stroke	230 Volt Swivel Top	230 Volt Straight Out Top
22" Stroke	53500-2230	53500-223L
32" Stroke	53500-3230	53500-323L
44" Stroke	53500-4230	53500-423L
62" Stroke	53500-6230	53500-623L
72" Stroke	53500-7230	53500-723L

Potentiometer Part Numbers

If a Potentiometer is desired, order the Potentiometer Kit (Part No. 48233)

Linear-Lift Installation

Swivel Top Pulley/Sprocket Angle Adjustment (Cable Version)

The Swivel Top Linear-Lift offers a variety of system cable routing options, and can be located in building corners where the system cables are routed directly away from the front of the Linear-Lift™ (See **Figure 2.**). Loosen the Nuts (**Item 3, Figure 2.**), to adjust for Pulley angle, then retighten once the desired angle has been achieved.

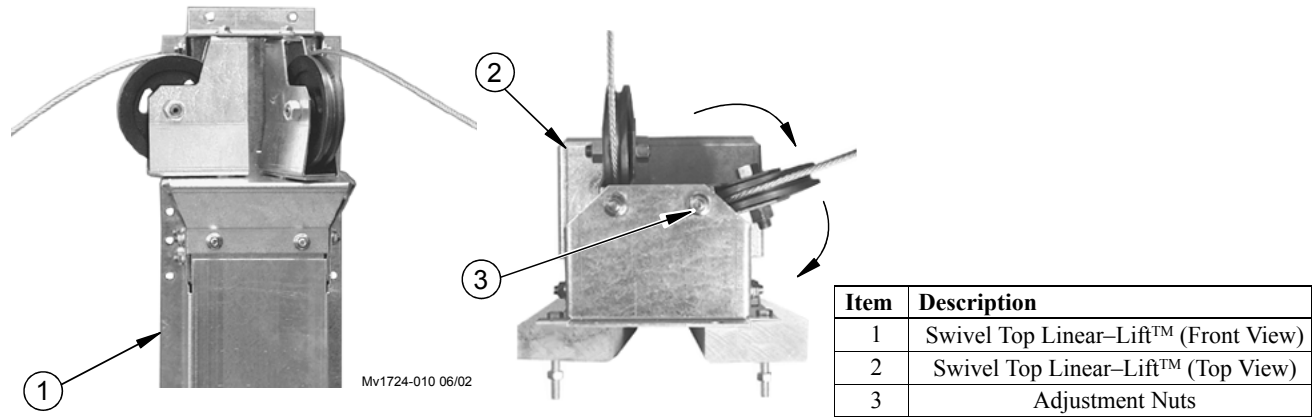


Figure 2.Swivel Top Pulley/Sprocket Angle Adjustment (Cable Version)

Swivel Top Pulley/Sprocket Angle Adjustment (Chain Version)

To adjust the Chain-Drive Version, loosen the Nuts, (**Item 1, Figure 3.**) swivel the Pulleys to the desired angle and re-tighten. The Adjustment Bolts (**Item 2**) should rotate freely to allow the chain to line up correctly with the Sprockets. If necessary, use a 3/16 Allen wrench to turn the adjustment bolts for proper alignment of the chain. **Caution: Do not break the Adjustment Bolts loose!! Only turn them for proper chain alignment.**

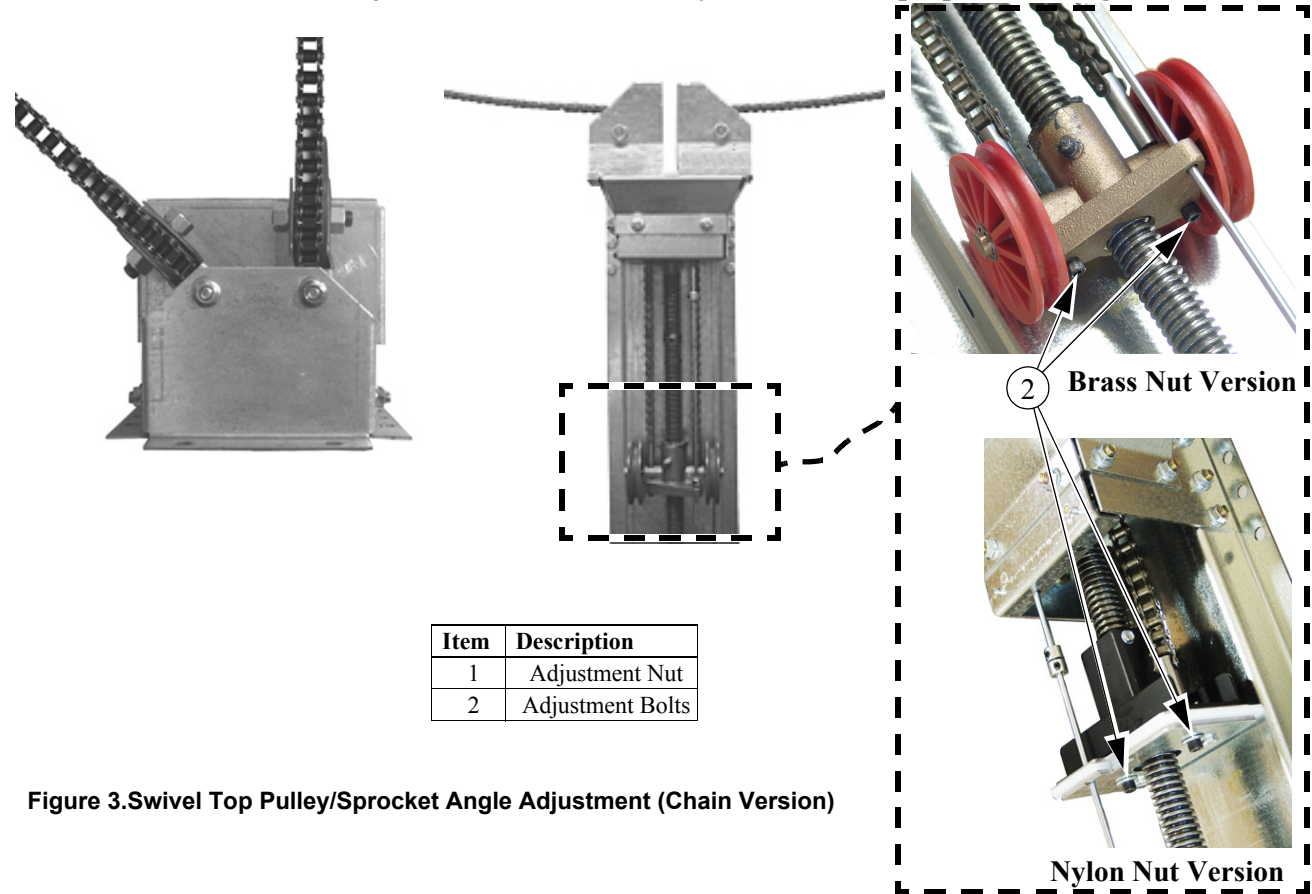


Figure 3.Swivel Top Pulley/Sprocket Angle Adjustment (Chain Version)

"To the Side" Cable/Chain Routing Systems

If your cables/chains are routed "to the sides", as opposed to straight away from the Lift, use the Lag Screws provided for mounting. (Figure 4. below). All Lag Screw Locations are shown in detail in Figure 4..

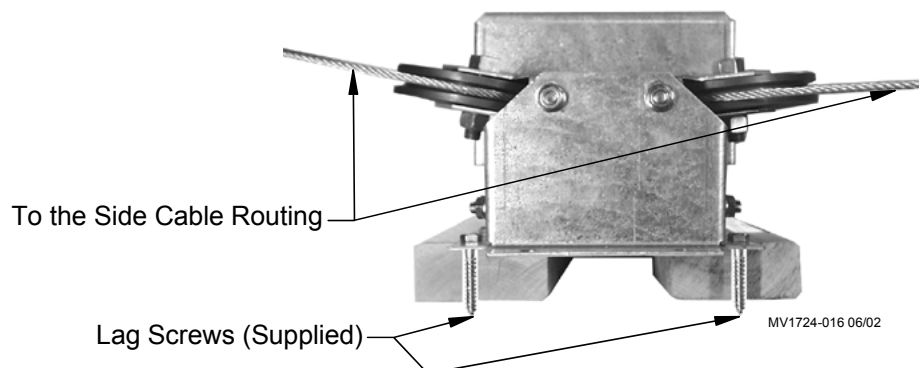


Figure 4. Adjusting Swivel Angle (Cable Version Shown)

"Straight-Off" Cable/Chain Routing Systems

If both cables are to be routed "straight off" of the front of the unit, (See Figure 5.), consider using Through-Bolts to secure the top of the LIFT to the supporting wall. Use the top 8 mounting holes, minimum. See Figure 9. on page 10, for all mounting hole locations.

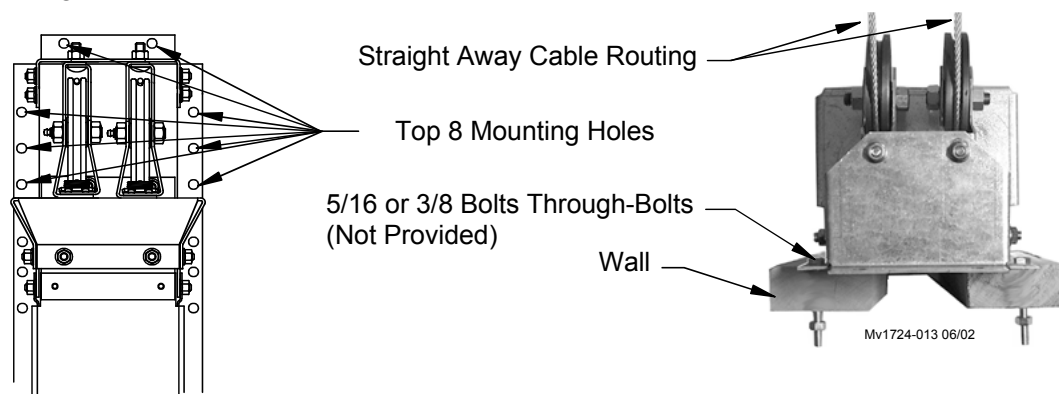


Figure 5. Swivel Top Linear-Lift™ Installation (vertical wall view of Cable Version Shown)

Linear Lift™ without Swivel Pulleys

When mounting the Linear Lift™ without swivel pulleys make sure that the Cables come straight out of the end of the lift. If the Cables are at too much of an angle it can cause damage to the Lift or Cable breakage.

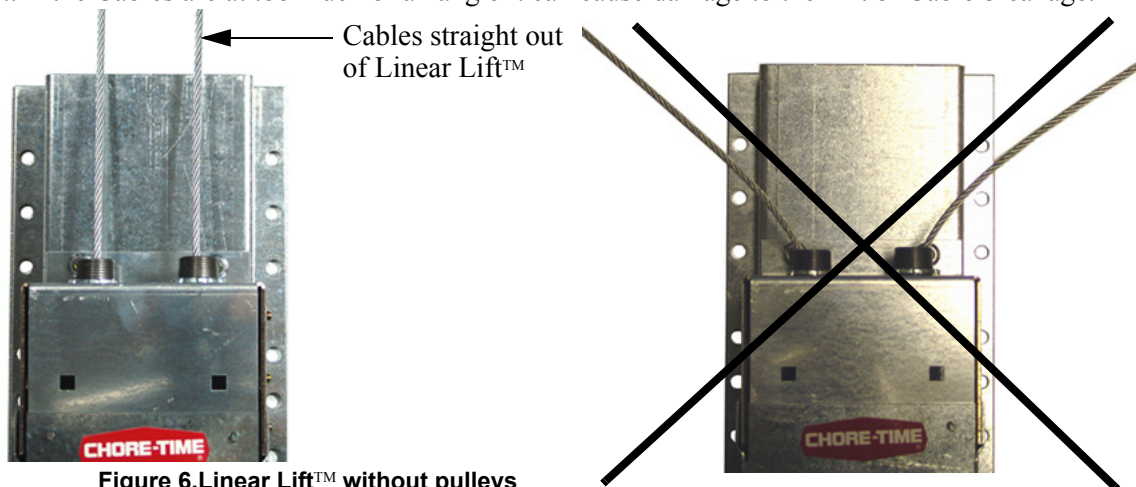


Figure 6. Linear Lift™ without pulleys

Ceiling Installations

The Swivel Top Linear-Lift™ is designed to be mounted on any ceiling where the slope of the ceiling is 2:12 or steeper (See Figure 7.). This allows the cable to be routed off the end of the unit for systems where whole house control of both sides of the house with one unit is needed. Use 3/8" Lag Screws, (included in Hardware Package), to attach the unit to the ceiling.

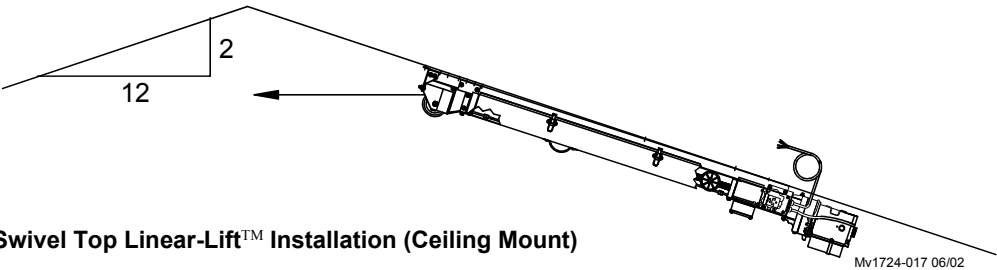


Figure 7.Swivel Top Linear-Lift™ Installation (Ceiling Mount)

If the Lift is to be installed on the ceiling, the vent plug must be installed next to the ceiling (upward) once mounted. Replace the vent plug with the solid steel plug from the opposite side of the gear housing. Refill oil in the gear housing before operating. For additional information, See Figure 14 (on page 13)

It may be necessary to provide a recess in the mounting surface for clearance of the 90° Elbow and vent plug, or by mounting the Swivel Top Linear-Lift™ on 2 x 10 lumber as shown for vent plug clearance.

Item	Description	Part No.
1	Power Unit	Varies (See Page 21, and 23)
2	Swivel Top Linear-Lift	Varies
3	1-1/2" Lumber	
4	90° Elbow	15405
5	Vent Plug	3523

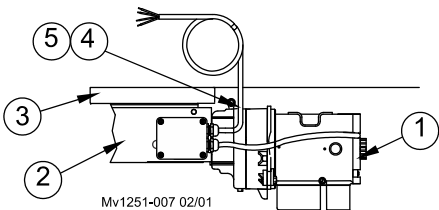
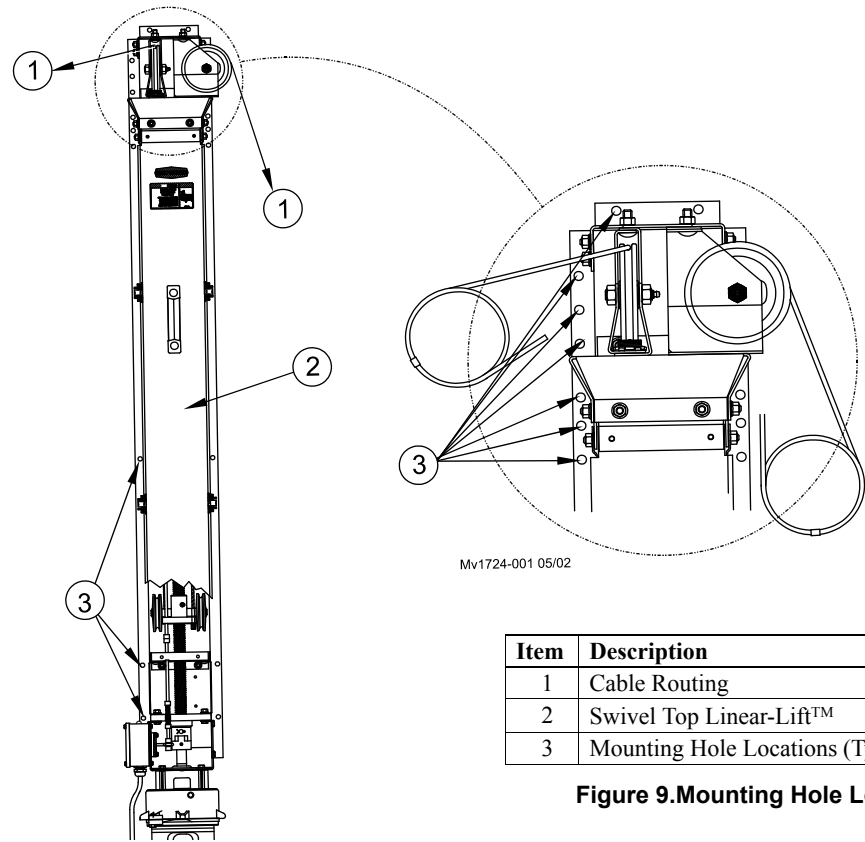


Figure 8.Swivel Top Linear-Lift Installation (ceiling mount)

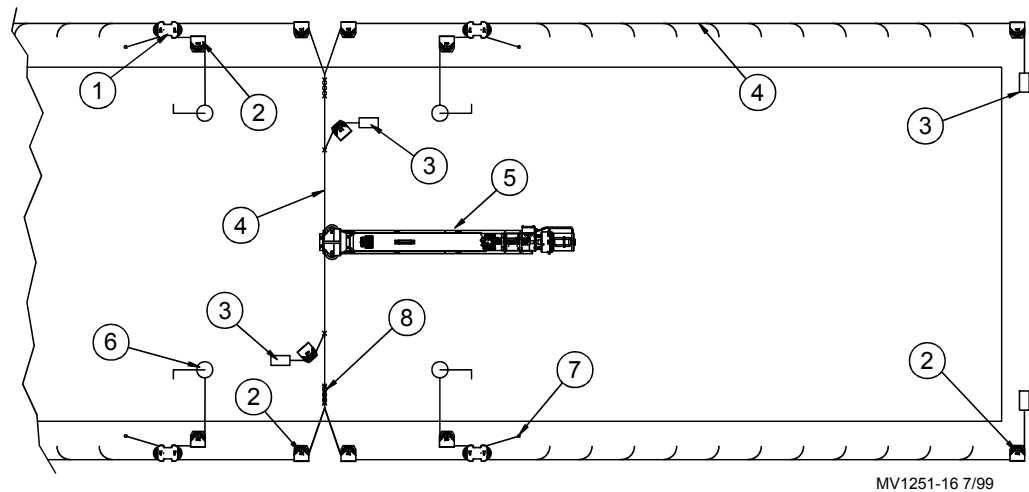
Mounting Hole Locations



Item	Description
1	Cable Routing
2	Swivel Top Linear-Lift™
3	Mounting Hole Locations (Typical Both Sides)

Figure 9.Mounting Hole Locations

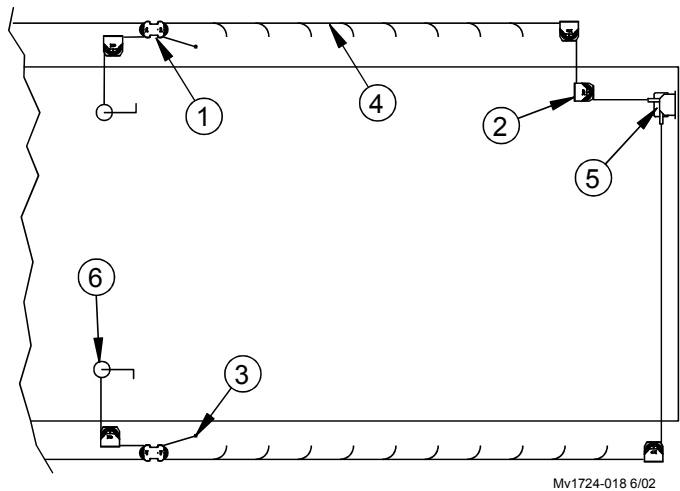
Ceiling Mount Swivel Top Linear-Lift™ Installation



Item	Description	Part No.
1	Pulley Assembly NY 3.5	27772
2	Single Pulley Assembly	27301
3	Anti-Slack Weight or Spring	47958
4	Curtain Cable 3/16-7x19 Recommended	13976
5	Swivel Top Linear-Lift™	Varies
6	Hand Winch Winch Mounting Assembly	1212 1193
7	Tie Down	
8	(3) Cable Clamp	732

Figure 10.Ceiling Mounted Swivel Top Linear-Lift™ pulling (2) curtains (top view)
with a 1:1 double-back cable arrangement

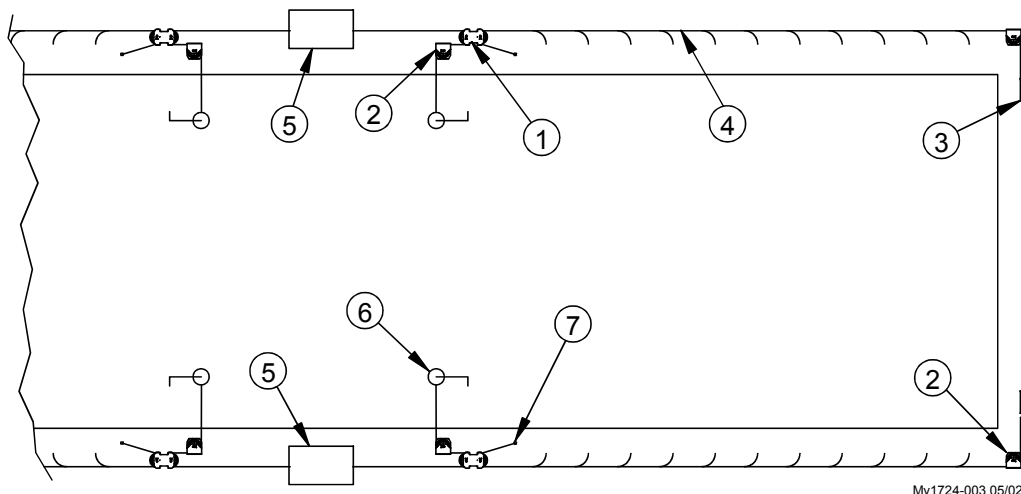
Two-Side Tunnel Curtain Application



Item	Description	Part No.
1	Pulley Assembly NY 3.5	27772
2	Single Pulley Assembly	27301
3	Tie Down	
4	Curtain Cable 3/16-7x19 Recommended	13976
5	Swivel Top Linear-Lift™	Varies
6	Hand Winch Winch Mounting Assembly	1212 1193

Figure 11.Wall Mounted (Corner) Swivel Top Linear-Lift™ pulling (2) curtains (top view)

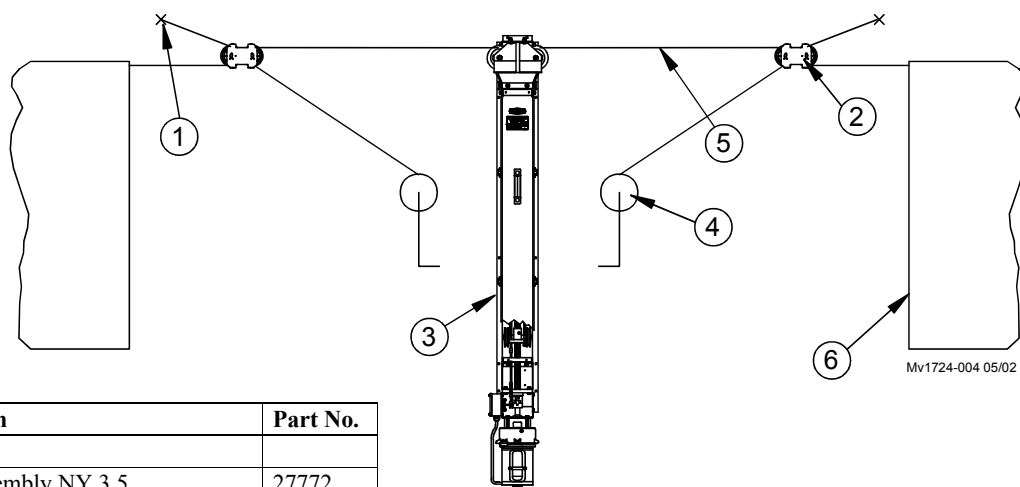
Side Wall Swivel Top Linear-Lift™ Installation



Item	Description	Part No.
1	Pulley Assembly NY 3.5	27772
2	Single Pulley Assembly	27301
3	Anti Slack Weight or Spring	47958
4	Curtain Cable 3/16-7x19 Recommended	13976
5	Swivel Top Linear-Lift™	Varies
6	Hand Winch Winch Mounting Assembly	1212 1193
7	Tie Down	

Figure 12. Wall Mounted (Corner) Swivel Top Linear-Lift™ pulling (2) curtains (top view)

Side Wall Swivel Top Linear-Lift™ Installation

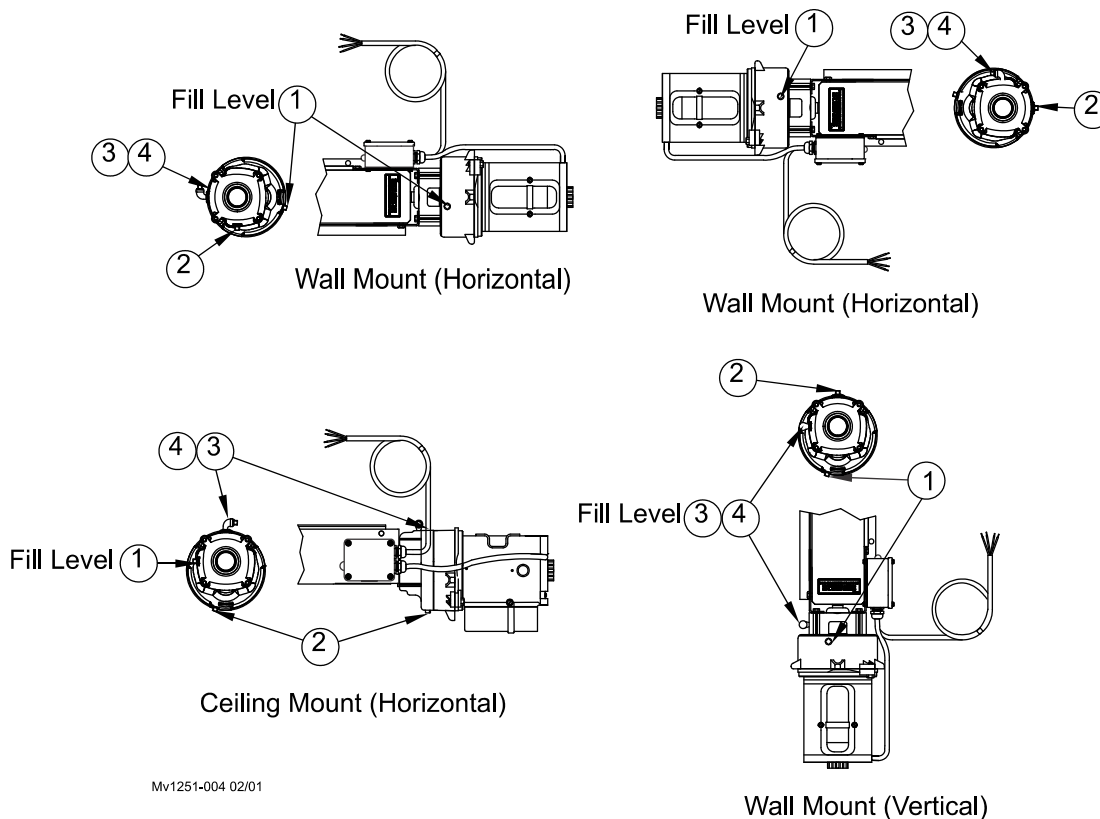


Item	Description	Part No.
1	Tie Down	
2	Pulley Assembly NY 3.5	27772
3	Swivel Top Linear-Lift™	Varies
4	Hand Winch Winch Mounting Assembly	1212 1193
5	Curtain Cable 3/16-7x19 Recommended	13976
6	Curtain	

Figure 13. Side Wall Swivel Top Linear-Lift™ with a 1:1 double-back cable arrangement (front-view)

Alternative Vent Plug Locations for Various Swivel Top Linear-Lift™ Mountings

Refer to the four mounting diagrams shown in **Figure 14.** to determine the correct Vent Plug location.



Item	Description	Part No.
1	1/4 Solid Pipe Plug	2755
2	1/4 Pipe Plug (Magnetic)	30160
3	1/4 Vent Plug	3523
4	90° Elbow	15405

Figure 14. Vent Plug and Fill Level Locations

Oil Recommendation

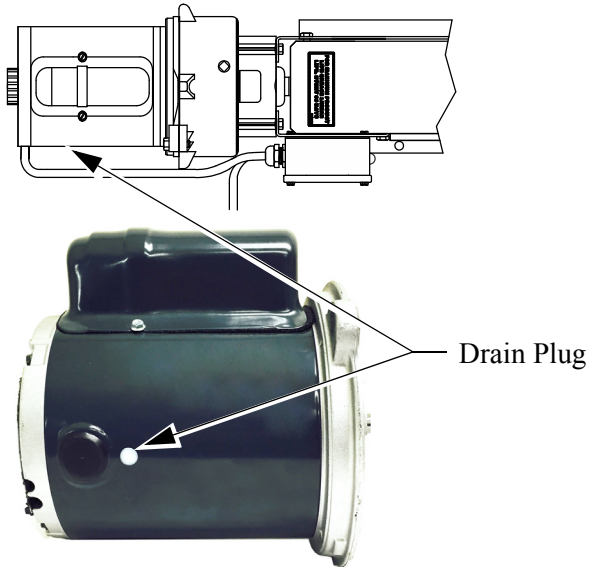
The gearhead contains 13.5 oz. [.4 Liters] of SAE 40 oil.

For horizontal and ceiling mounted Swivel Top Linear-Lifts™, fill the oil to the fill hole. For vertical mounted Swivel Top Linear-Lifts™ fill the oil to approximately 2 ounces above the fill hole. **(See Figure 14.)** for oil fill locations.

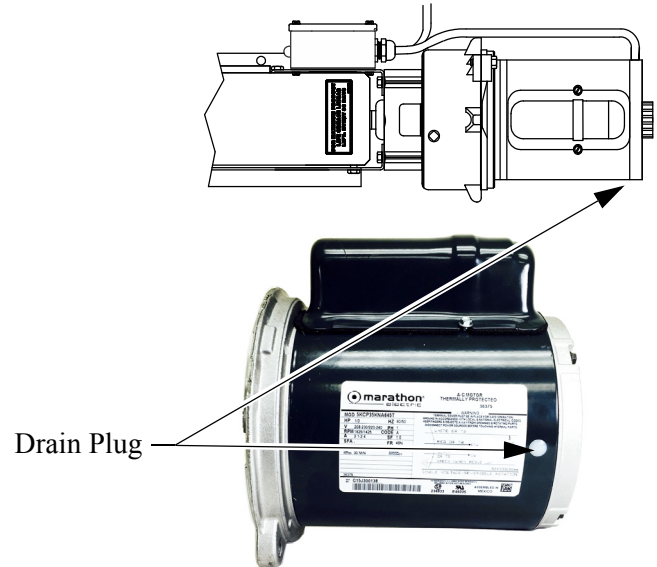
Removal of Motor Drain Plug for Wall Mounted Units

For Wall Mounted Units, remove the appropriate Drain Plug from the Motor as shown below. Failure to remove the proper Drain Plug could result in damage to the Motor.

Wall Mount (Horizontal)



Wall Mount (Horizontal)



Wall Mount (Vertical)

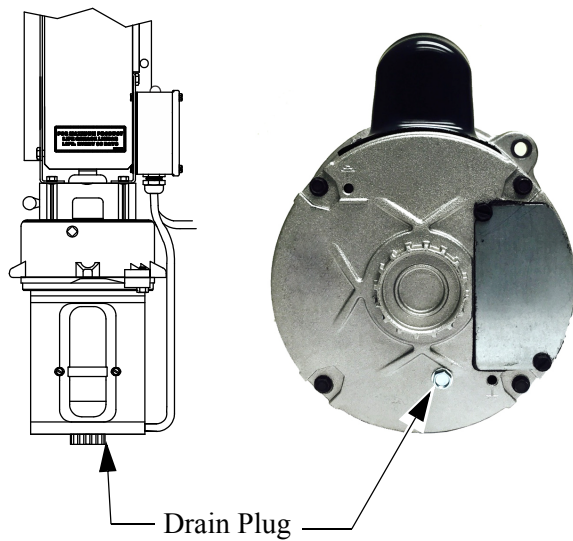


Figure 15.Motor Drain Plug

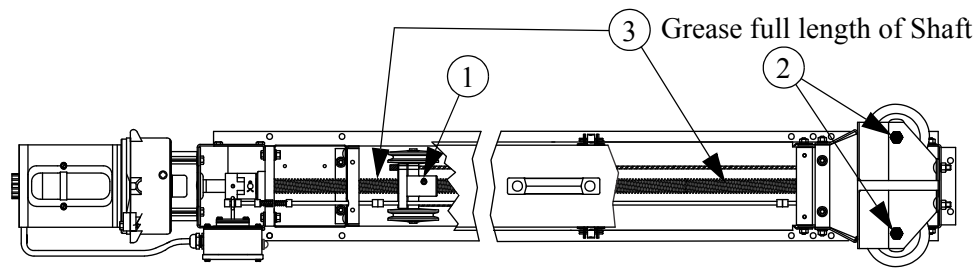
Grease Recommendation

The Swivel Top Linear-Lift is fully greased at the factory. However, for maximum life, Chore-Time strongly recommends greasing the Swivel Top Linear-Lift Monthly.

Recommended Grease: Sunoco Construction Grease, Mobile CMP Grease, or similar water-resistant with molybdenum, extreme pressure (E.P.) grease. (See Figure 16.)

Important!! Apply grease to Threaded Rod across full length.

Important!! Grease every 30 days for maximum life.



Item	Description
1	Machined Nut (Bronze Nut models only)
2	Grease Fitting (Swivel Pulley models)
3	Apply Grease to full length of Threaded Rod

Figure 16.Swivel Top Linear-Lift™ Critical Grease Fitting Locations (horizontal wall mount view)

Swivel Top Linear-Lift™ Stop Switch Adjustment

The Swivel Top Linear-Lift™ has two adjustable stops (Set Collars) that may be moved to accommodate a variety of curtain opening sizes.

A 3/32" Allen wrench is required to loosen the set screw on the Set Collar (Items 2 and 3, Figure 17.). Slide the Set Collar(s) on the Switch Rod to the desired limits of Inlet operation or Curtain travel. **Two Collars are supplied for each limit of travel for best grip and shut off.**

Important ! Do not adjust the four Collars on the rod nearest the Motor. These are set at the factory for switch operation and do not require moving.

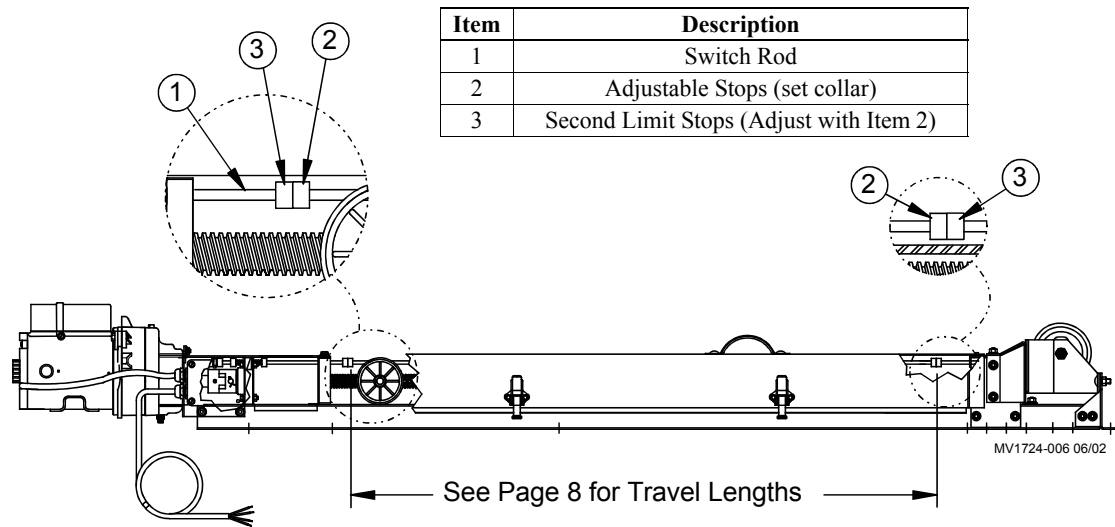


Figure 17.Stop Switch Adjustment

Wiring

Switch Wiring

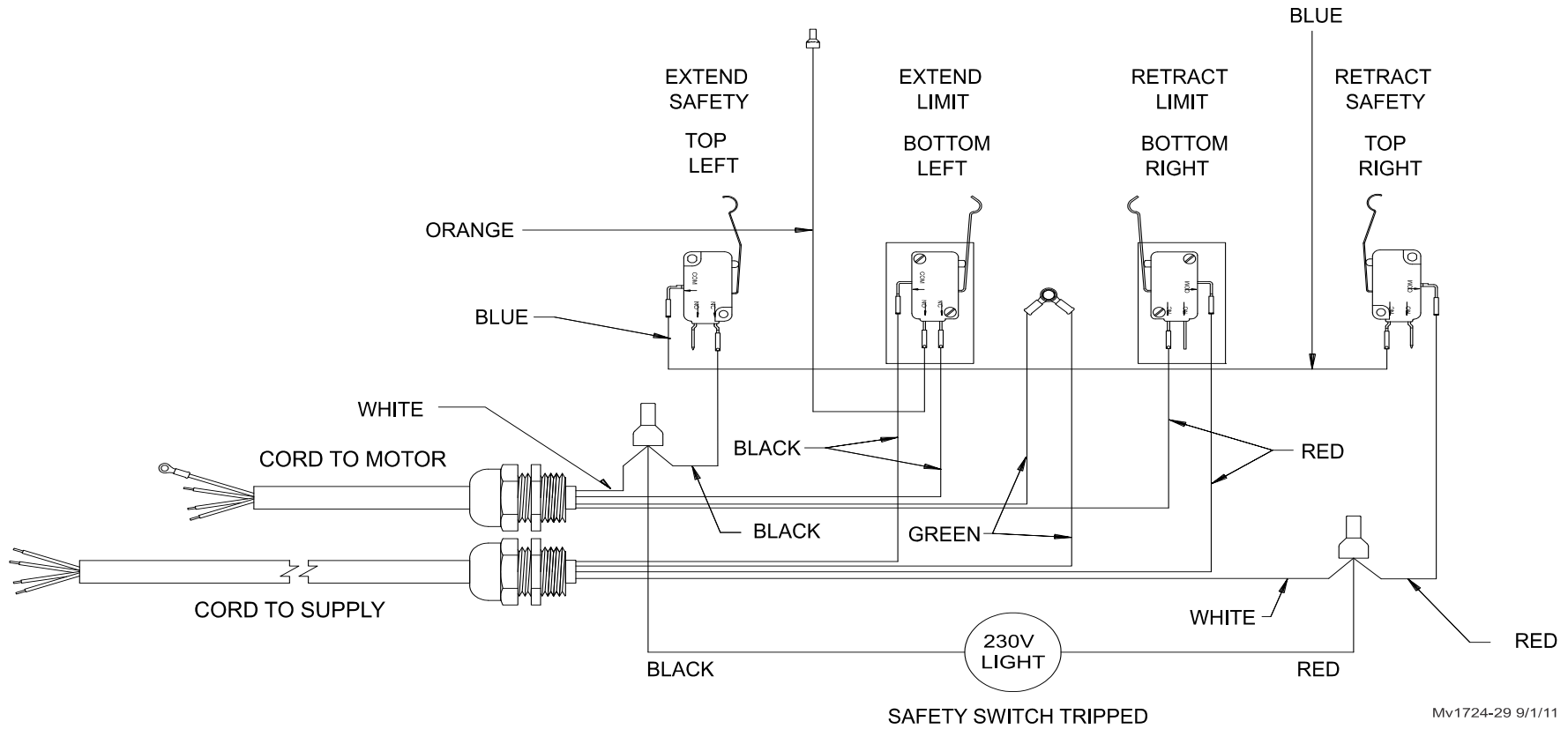
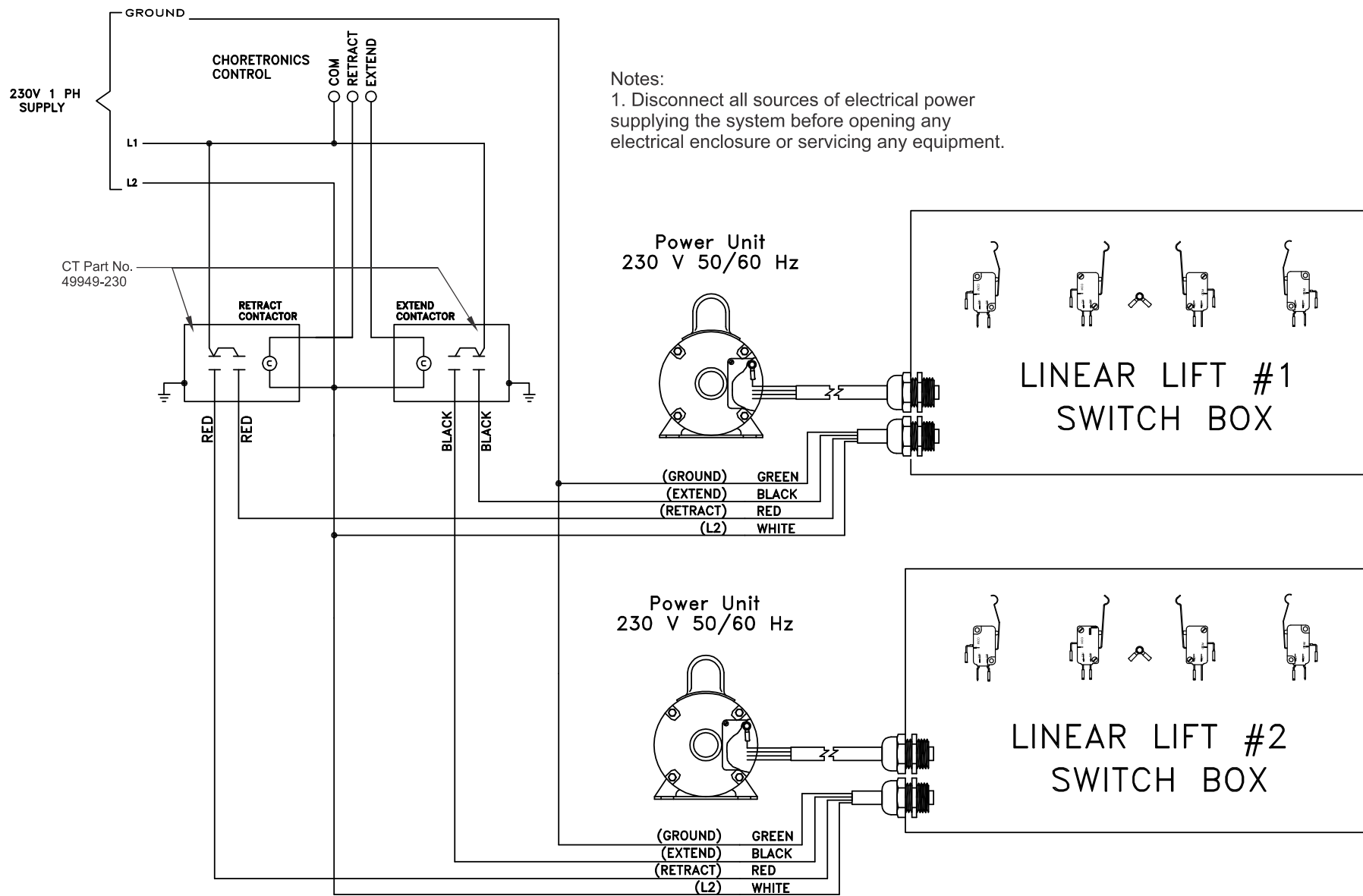


Figure 18. Switch Wiring Diagram

Wiring 2 (230V) Linear Lifts™ in Parallel (To Prevent Back-feed between Lifts)



Notes:

1. Disconnect all sources of electrical power supplying the system before opening any electrical enclosure or servicing any equipment.

Figure 19. Wiring 2 (230V) Linear Lifts in Parallel

Wiring 2 (115V) Linear Lifts™ in Parallel (To Prevent Back-feed between Lifts)

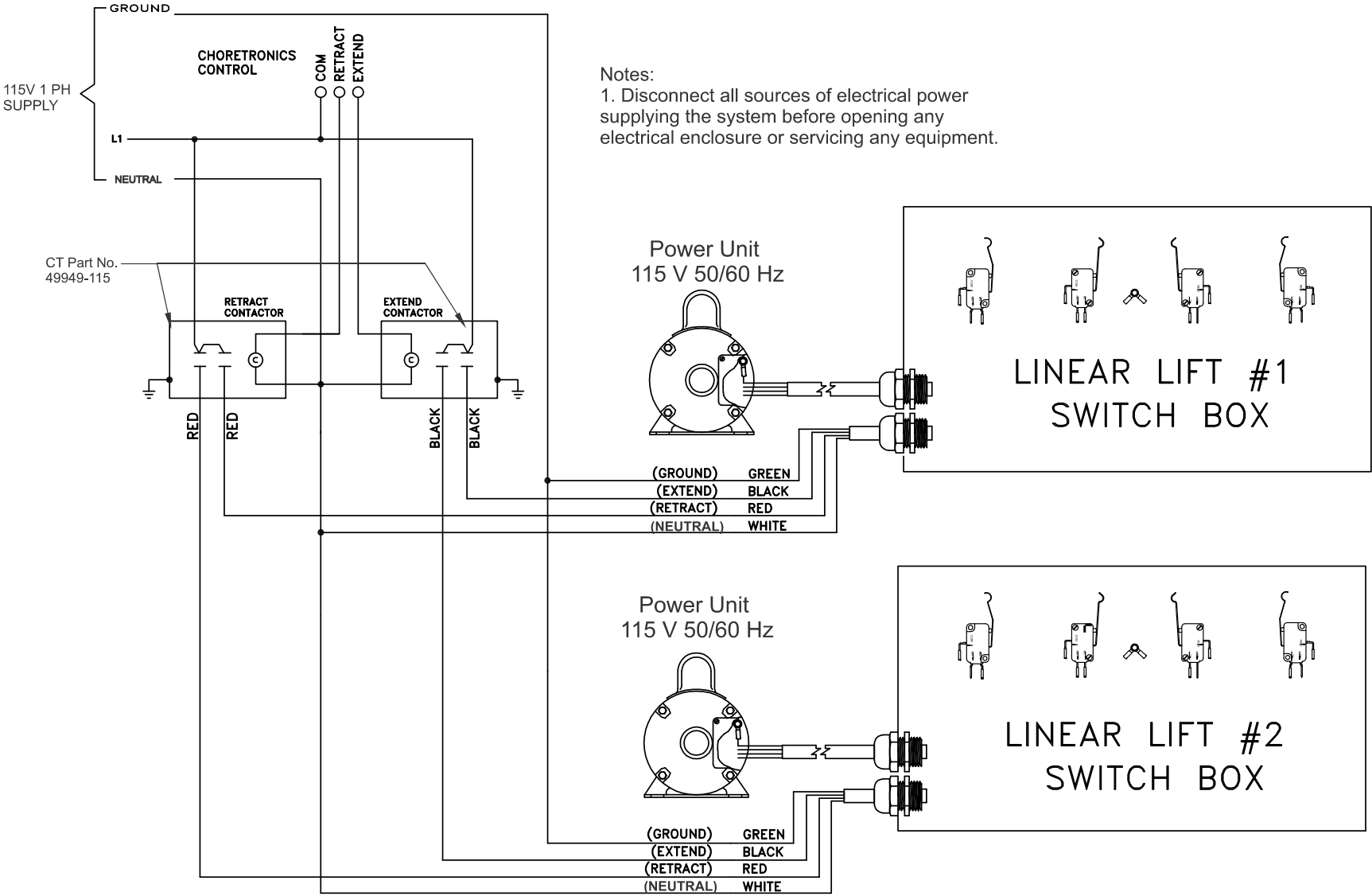
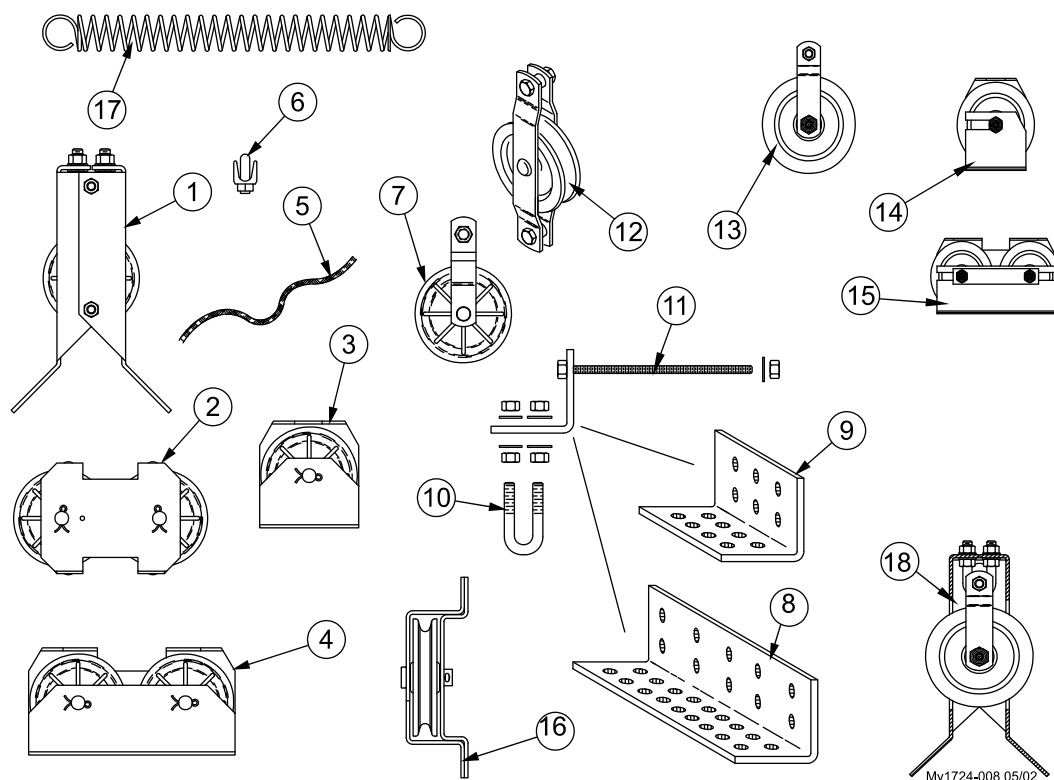


Figure 20. Wiring 2 (115V) Linear Lifts in Parallel

Optional Pulleys and Accessories



Item	Description	Part No.
1	3.5" Corner Pulley Assembly	35597
2	3.5" Double Pulley Assembly	27772
3	3.5" Pulley Kit	27301
4	3.5" Center Pulley Assembly	27302
5	3/16" Cable (150')—7 * 19 Weave	13976
6	3/16" Cable Clamp	732
7	3.5" Pulley Assembly	2500
8	Double Pulley Mounting Brkt.	35404
9	Single Pulley Mounting Brkt.	35405
10	3/8-16 x 2.5" U Bolt with Nuts	35602
11	5/16-18x7" Bolt	4412-20
12	3.5" Double Eye Pulley	2501
13	4.5" Steel Pulley Assembly	43005
14	4.5" Steel Single Pulley Assembly	43128
15	4.5" Steel Double Pulley Assembly	43129
16	3.5" Pulley Assembly	28429
17	Inlet Spring	47958
18	4.5" Steel Corner Pulley Assembly	43131

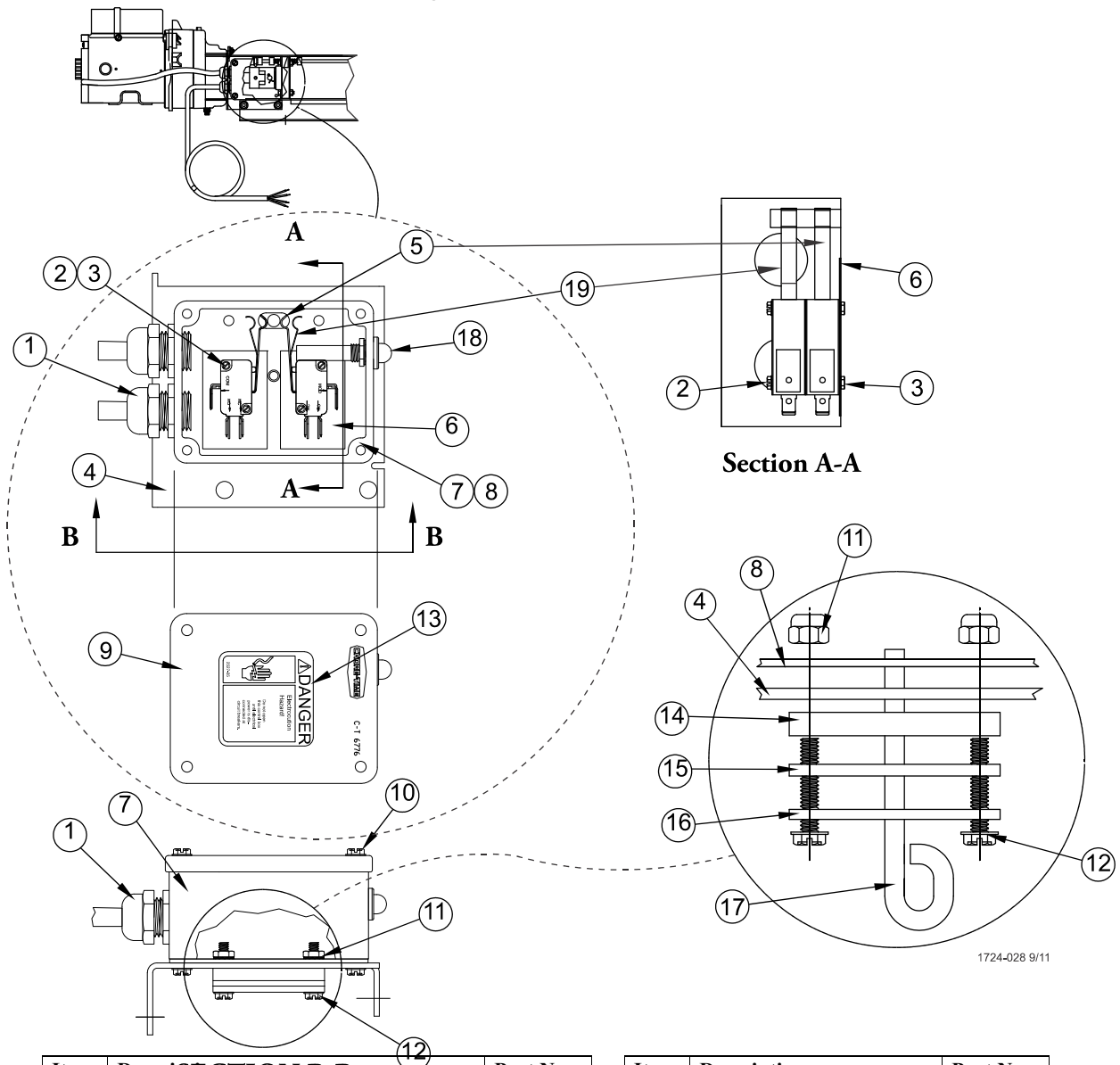
Figure 21. Pulley Options

Items 7, 8, 10, & 11—may be ordered as a Double Pulley Bracket Kit. Part No. 35600.

Items 7, 9, 10, & 11—may be ordered as a Single Pulley Bracket Kit. Part No. 35598.

Part Numbers

Linear-Lift™ Switch Assembly #47875



Item	Description	Part No.
1	Liquid Tight Connector	23779
2	Pan Head Screw 4-40x1	41822
3	Hex Nut 4-40	3511
4	Swivel Top Linear-Lift™ Motor Brkt Rh	47761
5	Switch, Micro	46324
6	Switch Insulation	1907-8
7	Terminal Box	36334
8	Gasket	6777
9	Switch Box Cover	6776
10	Twin Helix Screw #10x.75	6980

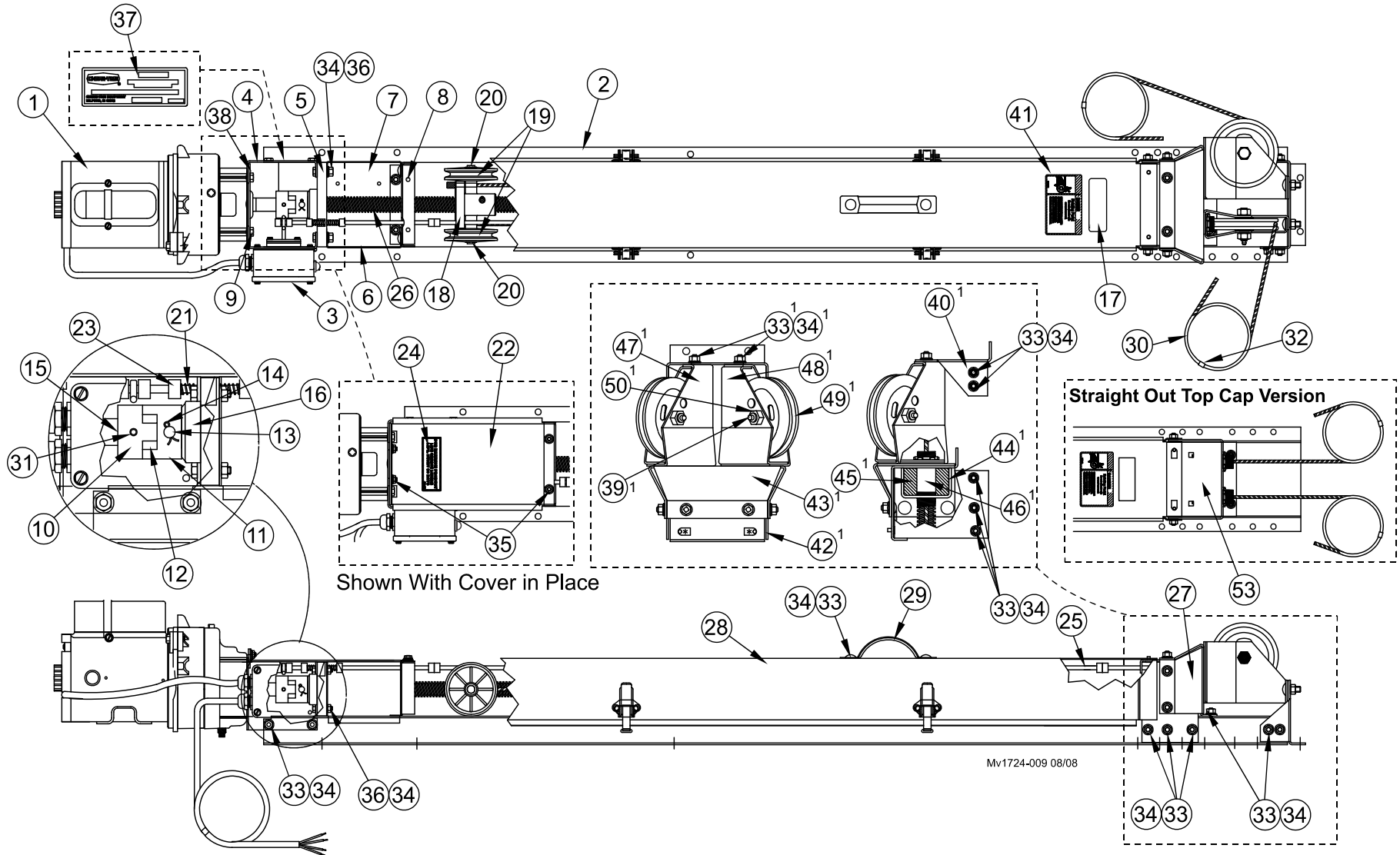
Item	Description	Part No.
11	#10-24 Lock Nut	34019
12	Hex Screw Sltd. #10-24	4416-6
13	Danger Decal	2527-35
14	Poly Switch Plate	38802
15	Neoprene Switch Plate	38801
16	Switch Plate	38803
17	Switch Hook	38804
18	Pilot Light	46047
19	Safety Switch	53678

Figure 22.Switch Assembly

This page left blank intentionally.....

Swivel Top Linear-Lift™ Drawings and Parts Listings

Linear Lift with Brass Nut and Cable: 47859-XXX0 Swivel Top, 47859-XXXL Straight Out Top



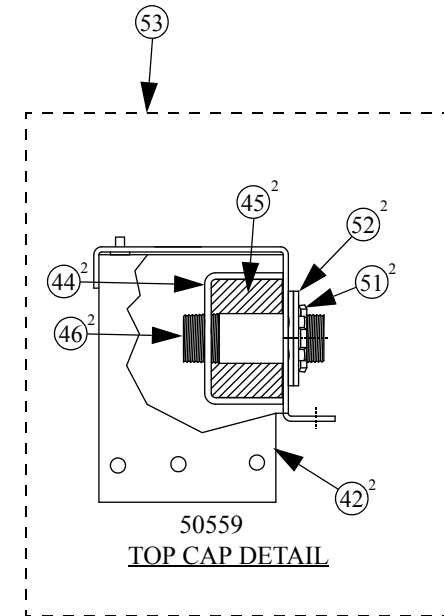
Mv1724-009 08/08

Linear Lift with Brass Nut and Cable: 47859-XXX0 Swivel Top, 47859-XXXL Straight Out Top Part Numbers

Item	Description	Part No.
1**	115 Volt Power Unit (60RPM)	42780
	230 Volt Power Unit (60 RPM)	36370
	230 Volt Power Unit (30 RPM)	48821
2	Swivel Top Linear-Lift™ Base	
	26"	47836-26
	36"	47836-36
	48"	47836-48
	66"	47836-66
3*	Linear-Lift™ Switch	47875
4	L.H. Linear-Lift™ Motor Bracket	47762
5	Linear-Lift™ Thrust Bracket	47763
6	R.H Linear-Lift™ Panel	47771-2
7	L.H Linear-Lift™ Panel	47771-1
8	Linear-Lift™ Swivel Partition	47772
9	Linear-Lift™ Cover Bracket	47834
10	Flexible Type L Coupling	36363-2
11	Flexible (Mach.) Coupling	35944
12	"SOX" Spider Spacer	36333
13	5/16 x 2 Clevis Pin	36466-1
14	.125 x .75 Cotter Pin	2663
15	3/16 x 1 Square Key	2112-1
16	Industrial Thrust Bearing	36397
17	Chore-Time Decal	2525-4
18	Machined Linear-Lift™ Nut	47759
19	Red Pulley Wheel	2503
20	Retainer Ring	41525
21	Compression Spring	49813
22	Lower Linear-Lift™ Cover	47835-1
23	Set Collar	41857
24	Grease Decal	2529-634
25	Linear-Lift™ Switch Rod	
	26"	51992-1
	36"	51992-2
	48"	51992-3
	66"	51992-4

Item	Description	Part No.
26	1-5 Threaded Acme Shaft	
	26"	47856-26
	36"	47856-36
	48"	47856-48
	66"	47856-66
27	Swivel Top Pulley Assembly	47876
28	Linear-Lift™ Cover Assembly	
	26"	47873-26
	36"	47873-36
	48"	47873-48
	66"	47873-66
29	Handle	3-12194
30	25' Linear-Lift™ Cable	47658
31	8-32 Set Screw	42728
32	Cable Tie	6635
33	5/16-18 x .625 Carriage Bolt	8282
34	5/16-18 Hex Flange Nut	8490
35	1/4-20 Hex Serrated Flange Nut	46460
36	5/16 x 18 x 1.25 Bolt	2150
37	Linear-Lift™ Decal	Varies
38	5/16 -18 x .50 Bolt	1839
39	4.5" Pulley Shaft Assembly	43112
40	Swivel Support Bracket	47839
41	Danger (Rotating Parts) Decal	2527-10
42 ^{1,2}	Linear-Lift™ End Box Bracket	47779
43 ¹	Platform End Swivel Bracket	47780
44 ^{1,2}	Linear-Lift™ Swivel Bracket	47783
45 ^{1,2}	Linear-Lift™ Swivel Pilot	47789
46 ^{1,2}	3/4 x 3.00 Pipe Nipple	47785
47 ¹	Outer Swivel Top Pulley Bracket	47781
48 ¹	Inner Swivel Top Pulley Bracket	47782
49 ¹	4.5" Pulley Assembly	42498
50 ¹	1/2" Lock Nut	8917

Item	Description	Part No.
51 ²	3/4" Stamped Steel Lock Nut	47784
52 ²	Top Cap Spacer	52546
53	Straight Out Top Cap Ass'y	50559



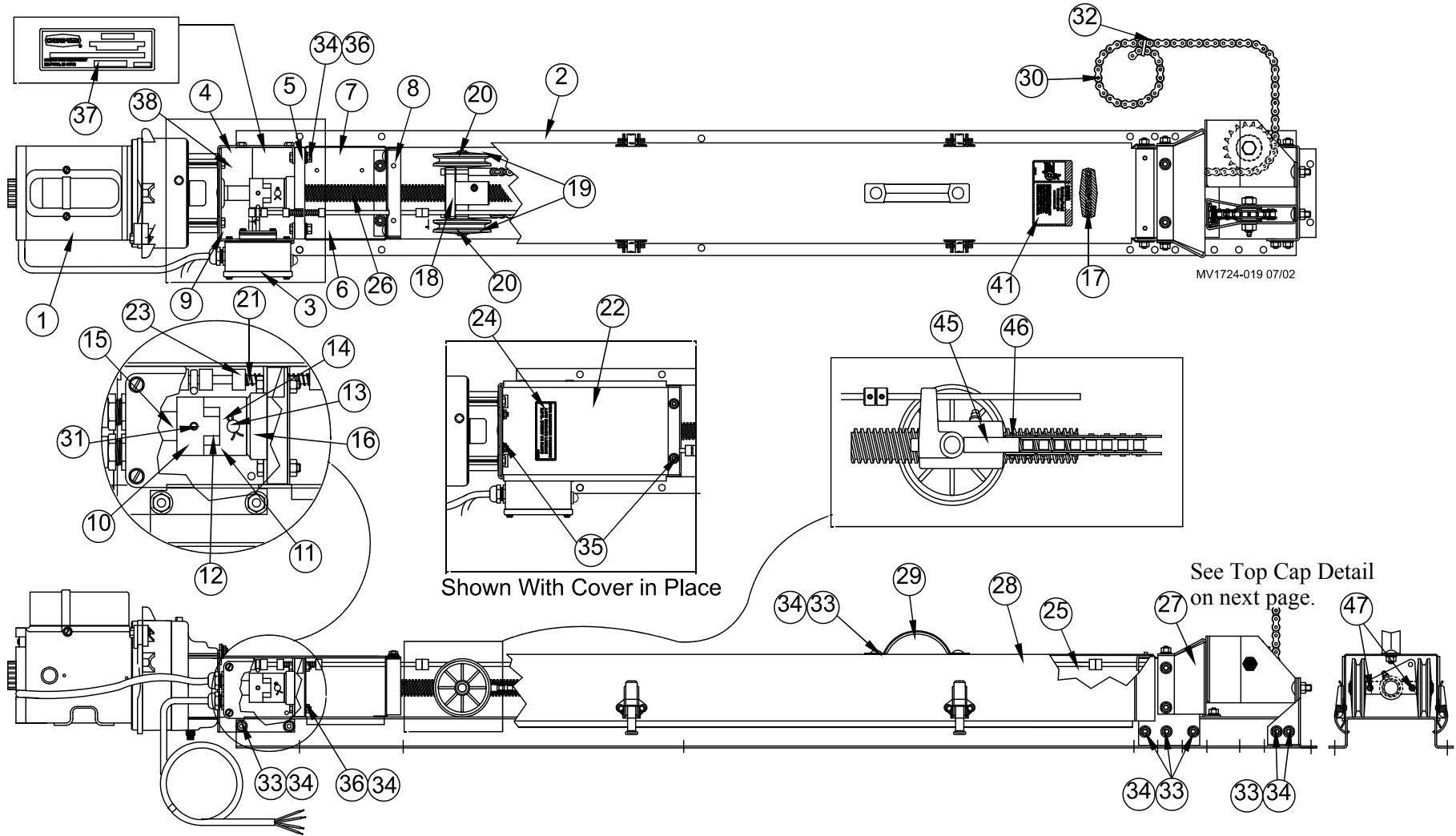
*See Figure 22 (on page 20) for exploded view of parts.

**See Figure 23 (on page 28) For Motor Part numbers (exploded View of Power Unit)

¹ Included in 47876 Swivel Linear Lift Swivel Top Cap Assembly

² Included in 50559 Top Cap Assembly

Linear-Lift, 48028-XXXX, with Brass Nut, Chain, and Swivel Top Sprockets

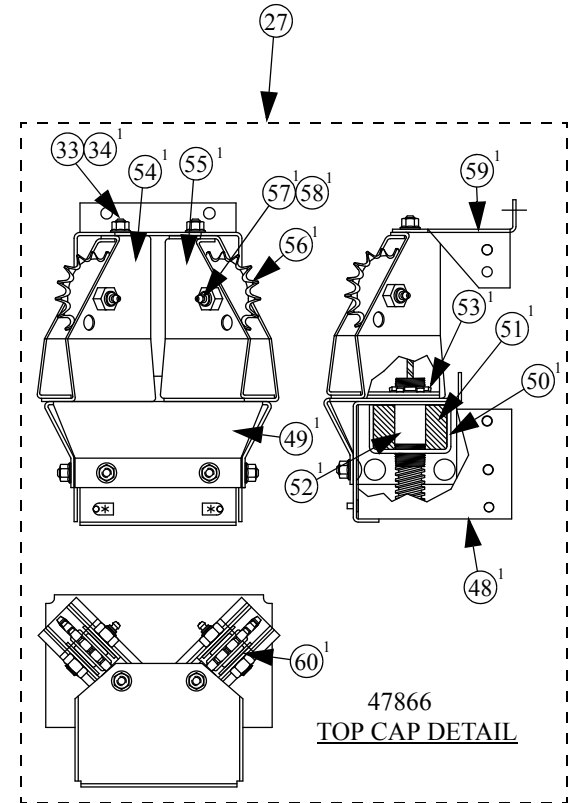


Linear-Lift, 48028-XXXX, with Brass Nut, Chain, and Swivel Top Sprockets Part Numbers

Item	Description	Part No.
1**	115 Volt Power Unit (60RPM)	42780
	230 Volt Power Unit (60 RPM)	36370
	230 Volt Power Unit (30 RPM)	48821
2	Swivel Top Linear-Lift™ Base	
	26"	47836-26
	36"	47836-36
	48"	47836-48
	66"	47836-66
3*	Linear-Lift™ Switch	47875
4	L.H. Linear-Lift™ Motor Bracket	47762
5	Linear-Lift™ Thrust Bracket	47763
6	R.H. Linear-Lift™ Panel	47771-2
7	L.H. Linear-Lift™ Panel	47771-1
8	Linear-Lift™ Swivel Partition	47772
9	Linear-Lift™ Cover Bracket	47834
10	Flexible Type L Coupling	36363-2
11	Flexible (Mach.) Coupling	35944
12	"SOX" Spider Spacer	36333
13	5/16 x 2 Clevis Pin	36466-1
14	.125 x .75 Cotter Pin	2663
15	3/16 x 1 Square Key	2112-1
16	Industrial Thrust Bearing	36397
17	Chore-Time Decal	2525-4
18	Machined Linear-Lift™ Nut	47759
19	Red Pulley Wheel	2503
20	Retainer Ring	41525
21	Compression Spring	49813
22	Lower Linear-Lift™ Cover	47835-1
23	Set Collar	41857
24	Grease Decal	2529-634
25	Linear-Lift™ Switch Rod	
	26"	51992-1
	36"	51992-2
	48"	51992-3
	66"	51992-4

Item	Description	Part No.
26	1-5 Threaded Acme Shaft	
	26"	47856-26
	36"	47856-36
	48"	47856-48
	66"	47856-66
27	Swivel Top Sprocket Assembly	47866
28	Linear-Lift™ Cover Assembly	
	26"	47873-26
	36"	47873-36
	48"	47873-48
	66"	47873-66
29	Handle	3-12194
30	Drive Chain	
	26"	21045-14
	36"	21045-15
	48"	21045-27
	66"	21045-39
	76"	21045-21
31	8-32 Set Screw	42728
32	Cable Tie	6635
33	5/16-18 x .625 Carriage Bolt	8282
34	5/16-18 Hex Flange Nut	8490
35	1/4-20 Hex Serrated Flange Nut	46460
36	5/16 x 18 x 1.25 Bolt	2150
37	Linear-Lift™ Decal	Varies
38	5/16 -18 x .50 Bolt	1839
41	Danger (Rotating Parts) Decal	2527-10
45	Chain Connecting Rod	44417
46	Connecting Link (#40)	20017
47	1/4-20 x 2-1/4 SH Cap Screw	5083-2
48	LL End Box Bracket	47779
49	Platform End Swivel Bracket	47780
50	LL Swivel Bracket	47783

Item	Description	Part No.
51 ¹	LL Swivel Pilot	47789
52 ¹	3/4 x 3.00 Pipe Nipple	47785
53 ¹	3/4" Stamped Steel Lock Nut	47784
54 ¹	Swivel Top Outer Pulley Bracket	47781
55 ¹	Swivel Top Inner Pulley Bracket	47782
56 ¹	Sprocket	20079
57 ¹	4-1/2" Pulley Shaft Assembly	43112
58 ¹	1/2" Lock Nut	8917
59 ¹	Swivel Support Bracket	47839
60 ¹	.631 x 1.5 x .087 Washer	2955-11

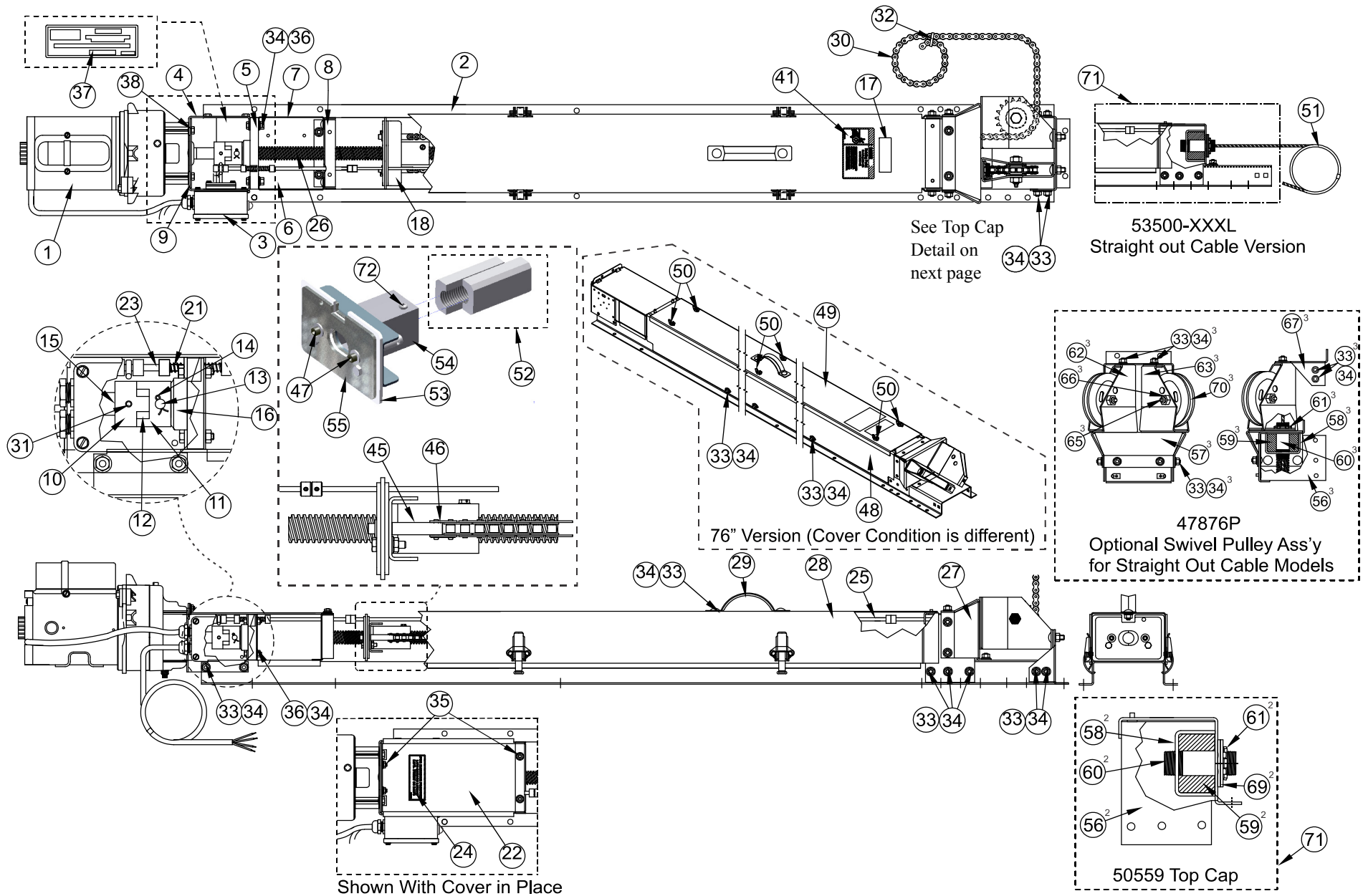


*See Figure 22 (on page 20) for exploded view of parts.

**See Figure 23 (on page 28) For Motor Part numbers (exploded View of Power Unit)

¹ Included in 47866 Swivel Linear Lift Sprocket Assembly

Linear-Lift with Plastic Nut: 53500-XXX0 Chain & Swivel Sprockets, 53500-XXXL Cable & Straight Out Top

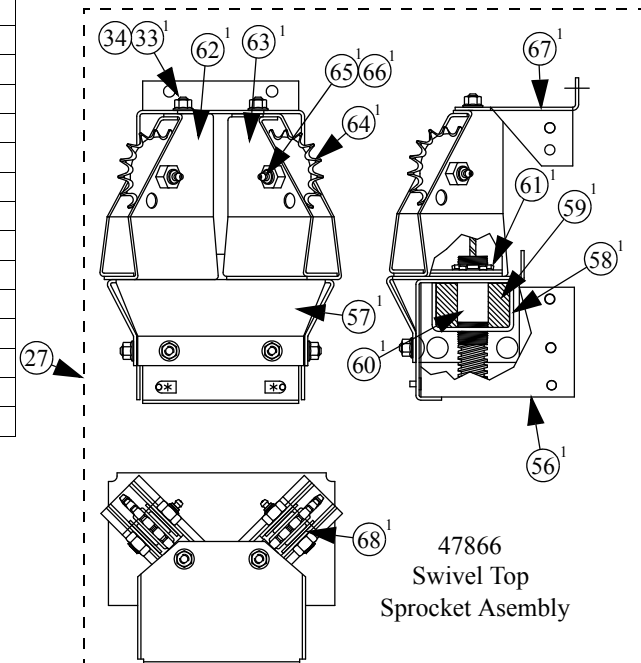


Linear-Lift with Plastic Nut: 53500-XXX0 Chain & Swivel Sprockets, 53500-XXXL Cable & Straight Out Top Part Numbers

Item	Description	Part No.
1**	115 Volt Power Unit (60RPM)	42780
	230 Volt Power Unit (60 RPM)	36370
	230 Volt Power Unit (30 RPM)	48821
2	Swivel Top Linear-Lift™ Base	47836-26
	26"	47836-36
	36"	47836-48
	48"	47836-66
	66"	47836-76
3*	Linear-Lift™ Switch	47875
4	L.H. Linear-Lift™ Motor Bracket	47762
5	Linear-Lift™ Thrust Bracket	47763
6	R.H Linear-Lift™ Panel	47771-2
7	L.H Linear-Lift™ Panel	47771-1
8	Linear-Lift™ Swivel Partition	47772
9	Linear-Lift™ Cover Bracket	47834
10	Flexible Type L Coupling	36363-2
11	Flexible (Mach.) Coupling	35944
12	"SOX" Spider Spacer	36333
13	5/16 x 2 Clevis Pin	36466-1
14	.125 x .75 Cotter Pin	2663
15	3/16 x 1 Square Key	2112-1
16	Industrial Thrust Bearing	36397
17	Chore-Time Decal	2525-4
18	Plastic Nut Assembly (Chain)	53498
	Plastic Nut Assembly (Cable)	53499
21	Compression Spring	49813
22	Lower Linear-Lift™ Cover	47835-1
23	Set Collar	41857
24	Grease Decal	2529-634
25	Linear-Lift™ Switch Rod	51992-1
	26"	51992-2
	36"	51992-3
	48"	51992-4
	66"	51992-5

Item	Description	Part No.
26	1-5 Threaded Acme Shaft	47856-26
	26"	47856-36
	36"	47856-48
	48"	47856-66
	66"	47856-76
27	Swivel Top Sprocket Assembly	47866
28	Linear-Lift™ Cover Assembly	47873-26
	26"	47873-36
	36"	47873-48
	48"	47873-66
29	Handle	3-12194
30	Drive Chain	21045-14
	26"	21045-15
	36"	21045-27
	48"	21045-39
	66"	21045-21
31	8-32 Set Screw	42728
32	Cable Tie	6635
33	5/16-18 x .625 Carriage Bolt	8282
34	5/16-18 Hex Flange Nut	8490
35	1/4-20 Hex Serrated Flange Nut	46460
36	5/16 x 18 x 1.25 Bolt	2150
37	Linear-Lift™ Decal	Varies
38	5/16 -18 x .50 Bolt	1839
41	Danger (Rotating Parts) Decal	2527-10
45	Chain Connecting Rod	44417
46	Connecting Link (#40)	20017
47	1/4-20 x 2-1/4 SH Cap Screw	5083-2
48	LL Side Cover (76" model only)	53508
49	LL Top Cover (76" model only)	53510
50	Wing Nut	1630
51	25' LL Cable	47658
52	Plastic Nut (For Repair)	53507
53	Plastic Wear Nut Plate (For Repair)	53494
54	Plastic Nut Weldment	53497
55	Plastic Nut Plate	53495

Item	Description	Part No.
56 ^{1,2}	LL End Box Bracket	47779
57 ¹	Platform End Swivel Bracket	47780
58 ^{1,2}	LL Swivel Bracket	47783
59 ^{1,2}	LL Swivel Pilot	47789
60 ^{1,2}	3/4 x 3.00 Pipe Nipple	47785
61 ^{1,2}	3/4" Stamped Steel Lock Nut	47784
62 ¹	Swivel Top Outer Pulley Bracket	47781
63 ¹	Swivel Top Inner Pulley Bracket	47782
64 ¹	Sprocket	20079
65 ^{1,3}	4-1/2" Pulley Shaft Assembly	43112P
66 ¹	1/2" Lock Nut	8917
67 ¹	Swivel Support Bracket	47839
68 ¹	.631 x 1.5 x .087 Washer	2955-11
69 ¹	Top Cap Spacer	52546
70 ³	4-1/2" Pulley Assembly w/Bearing	42498P
71	Straight Out Top Cap Assembly	50559
72	#10 x 1/2" Phil Screw	52102



*See Figure 22 (on page 20) for exploded view of parts.

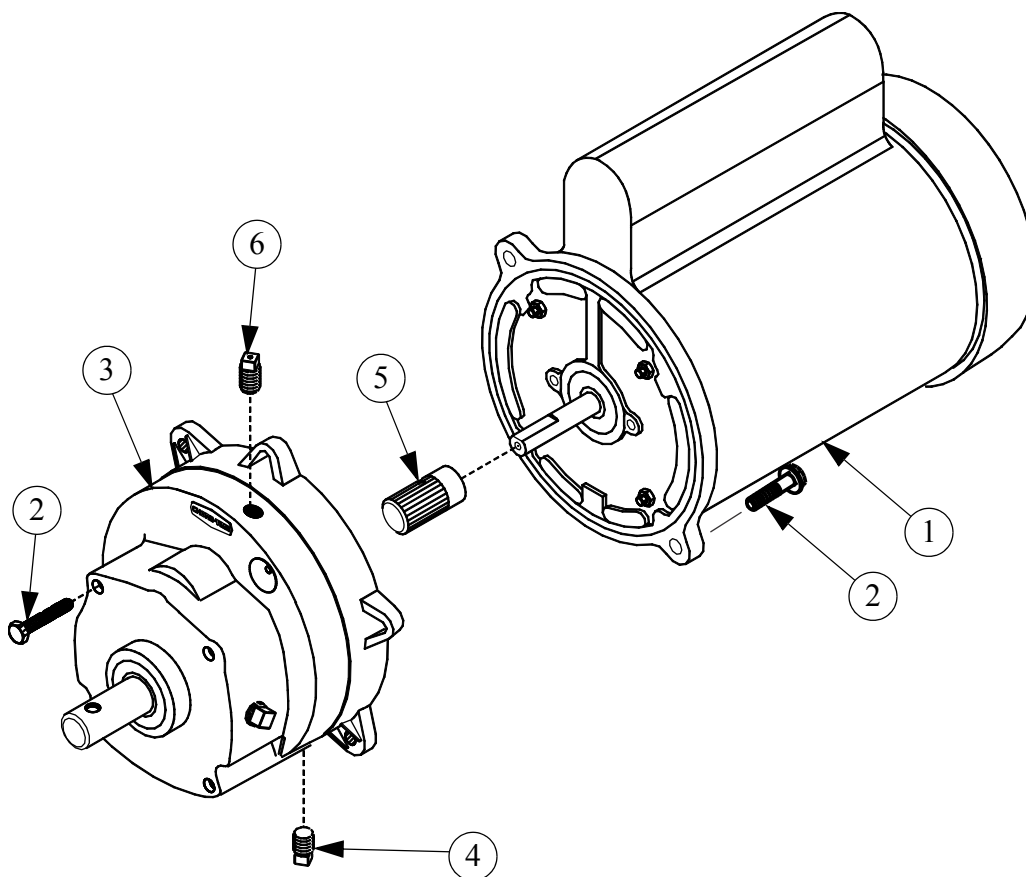
**See Figure 23 (on page 28) For Motor Part numbers (exploded View of Power Unit)

¹ Included in 47866 Swivel Linear Lift Sprocket Assembly

² Included in 50559 Top Cap Assembly

³ Included in 47876P Swivel Top Conversion

Power Unit Part Numbers



Item	Description	42780 Part No.	36370 Part No.	48821 Part No.
1	Motor, 1 Ph, 115V 60Hz, 1/3HP, 1625 RPM	42778		
	Motor, 1Ph, 230V, 50/60Hz, 1/3HP, 1625/1425 RPM		36375	
	Motor, 1 Ph, 200-230V, 60Hz, 1/6 HP, 840 RPM			48820
2	5/16-18x5/8 Hex HD Screw	38163	38163	38163
3	Gearhead	3261-15	3261-15	3261-15
4	Pipe Plug (magnetic)	30160	30160	30160
5	Pinion Assembly	3249	3249	3249
6	Pipe Plug (Red Poly)	3516	3516	3516

Figure 23. Power Unit Part Numbers

This Page left Blank Intentionally.....



Note: The original, authoritative version of this manual is the English version produced by CTB, Inc. or any of its subsidiaries or divisions, (hereafter collectively referred to as "CTB"). Subsequent changes to any manual made by any third party have not been reviewed nor authenticated by CTB. Such changes may include, but are not limited to, translation into languages other than English, and additions to or deletions from the original content. CTB disclaims responsibility for any and all damages, injuries, warranty claims and/or any other claims associated with such changes, inasmuch as such changes result in content that is different from the authoritative CTB-published English version of the manual. For current product installation and operation information, please contact the customer service and/or technical service departments of the appropriate CTB subsidiary or division. Should you observe any questionable content in any manual, please notify CTB immediately in writing to: CTB Legal Department, P.O. Box 2000, Milford, IN 46542-2000 USA.

Revisions to this Manual

Page No.	Description of Change
26,27	Added 47876 Swivel Top Conversion to Parts List

Contact your nearby Chore-Time distributor or representative for additional parts and information.

Chore-Time Group. A division of CTB, Inc.
PO Box 2000
Milford, Indiana 46542-2000 USA
Phone (574) 658-4101 Fax (877) 730-8825
E-mail: poultry@choretime.com
Internet: www.choretimepoultry.com