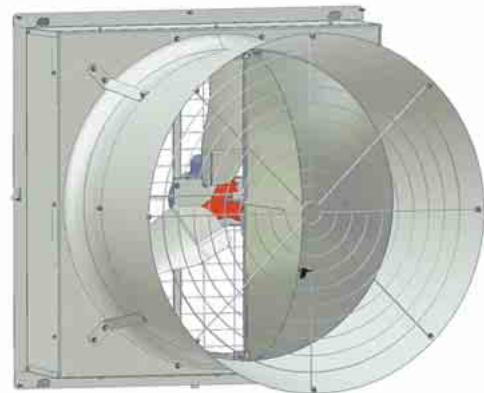
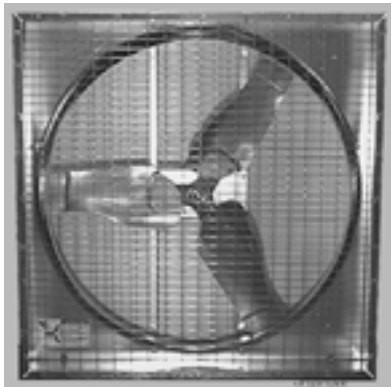


## 36" Hyflo® Retrofit Kit Installation & Operator's Instruction Manual



### Safety

#### **DANGER: Electrical Hazard**

Disconnect electrical power before inspecting or servicing equipment unless maintenance instructions specifically state otherwise. Ground all electrical equipment for safety. All electrical wiring must be done by a qualified electrician in accordance with local and national electric codes. Ground all non-current carrying metal parts to guard against electrical shock. With the exception of motor overload protection, electrical disconnects and over current protection are not supplied with the equipment.



#### **DANGER: Rotating Fan Blade**

Keep Hands away. Disconnect power before servicing. Fan may start automatically. Do not operate the Fan without the screens in place.

Disregard to the above mentioned **Danger** may cause serious injury including death.

- Keep all Safety Signs and decals in good condition.
- Replace damaged or missing decals.



## Installing the new Door Assembly and Cone

### Cone Assembly and Installation

Begin assembling the Cone by laying a Cone Panel (**Item 1, Figure 3**) on a couple of boards with the **c-shaped drain tab (Item 2)** towards the front **as shown**. With the c-shaped drain tab toward the front (**See Figure**), insert the tabs of each Cone Panel into the Slots of the next and lay them down locking them in place.

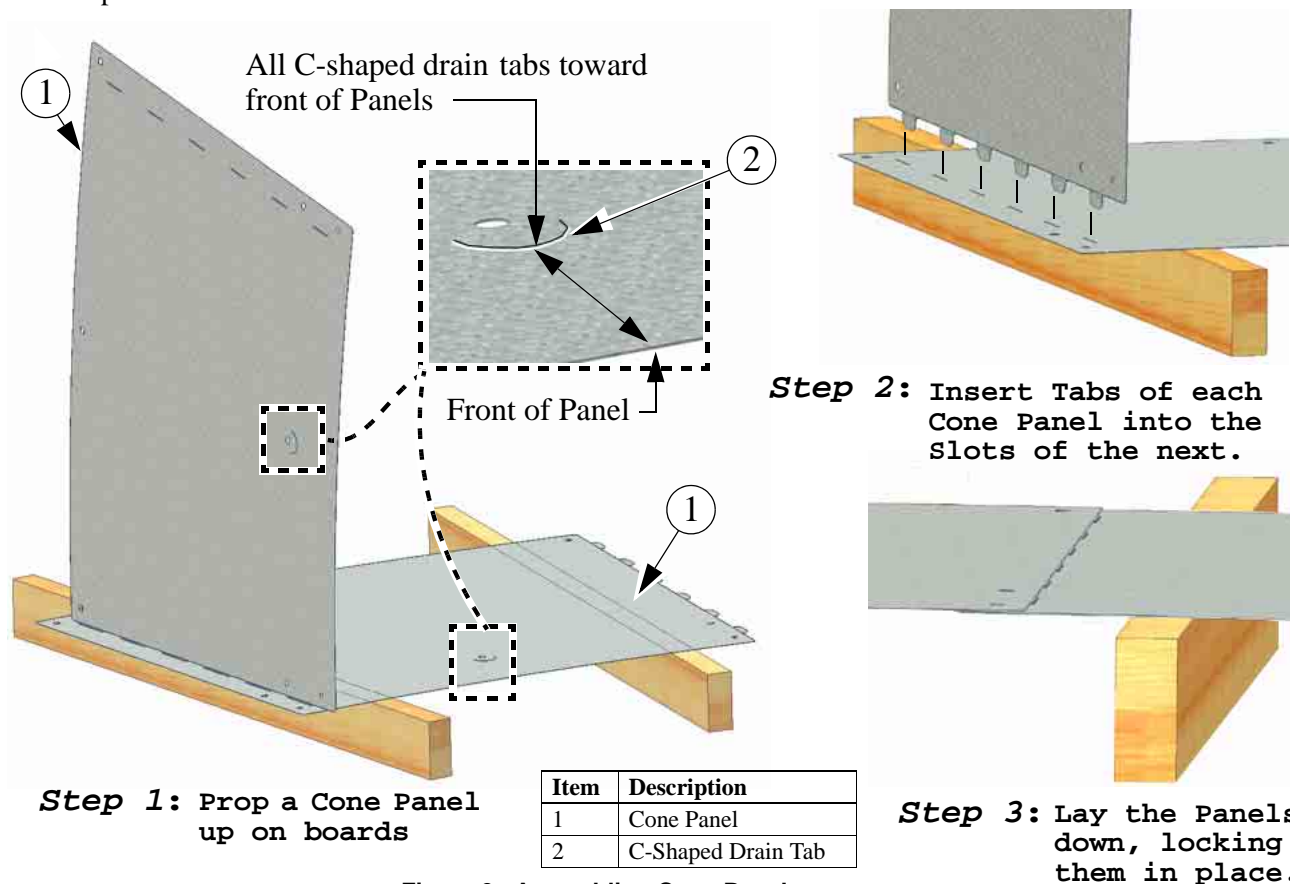


Figure 3. Assembling Cone Panels

When all four Cone Panels are connected, stand the panels up on edge and curl the Cone around with the smaller diameter of the Cone up as **shown below**. Assemble the final Panels together and allow the Cone to take its shape. If the Cone is assembled correctly the Tabs should all be on the Inside of the finished Cone. Fasten the Cone Panels together with (4) 5/16 x 1/2" Hex Bolts Threaded in from the inside of the finished Cone **as shown in Figure 4**. Do not tighten down the Nuts at this time. Leave the Nuts loose until the Cone is attached to the Fan.

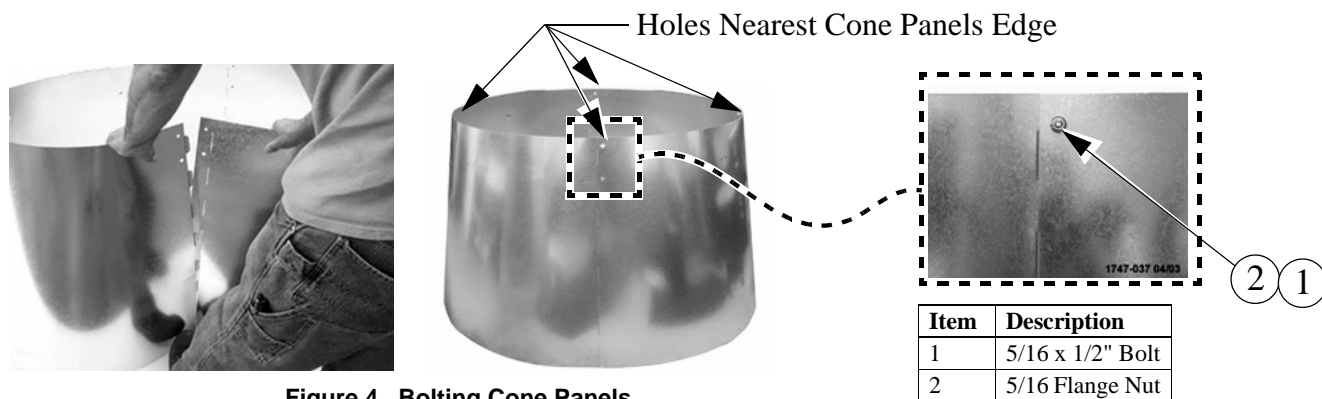


Figure 4. Bolting Cone Panels

Orient the Door Assembly such that the bottom is lined up with one of the C-Shaped Drain Tab in the Cone Assembly. The bottom of the Door Assembly can be identified by a drain hole in the Ring (See **Figure 5**). Line up the Four Holes in the Door Ring with the holes in the Cone and thread (4) 5/16 x 1.25" Bolts (**Item 1**) in until they are tight. Do not install Nuts at this time. These Bolts will be used later to attach the Cone Brackets to the Cone Assembly.

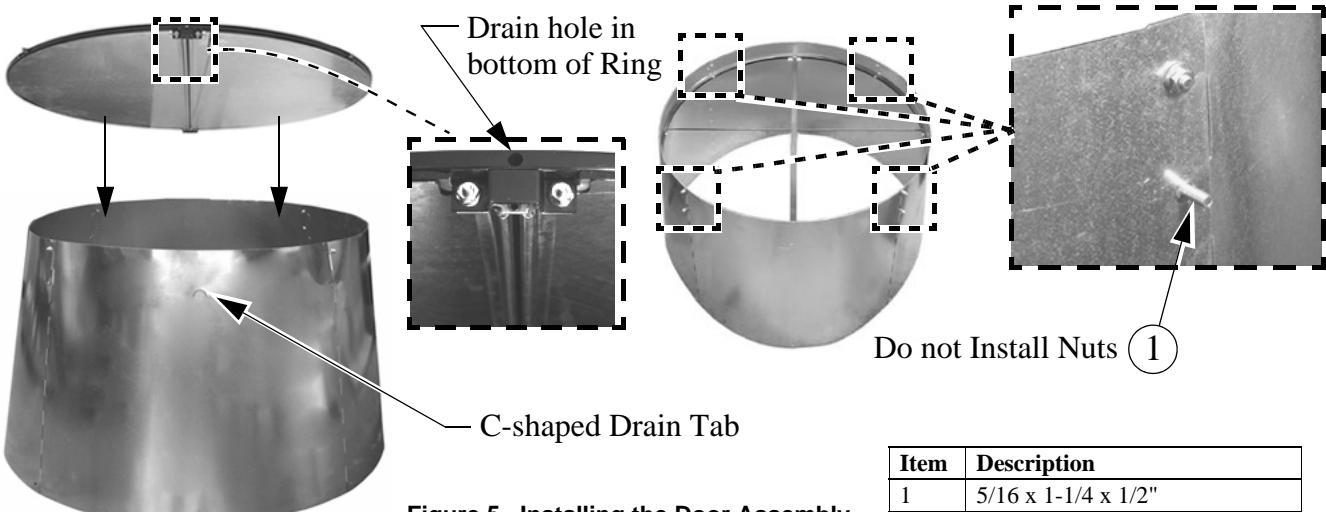


Figure 5. Installing the Door Assembly

Use (2) 5/16 x 1.25" Bolts (**Item 1, Figure 6**) and 5/16 Flange Nuts (**Item 2**) to attach the Ring to the Cone using the Holes located on both sides near the Door Center Brace as **shown below**. *Note that the Nuts go on the outside of the Cone.*

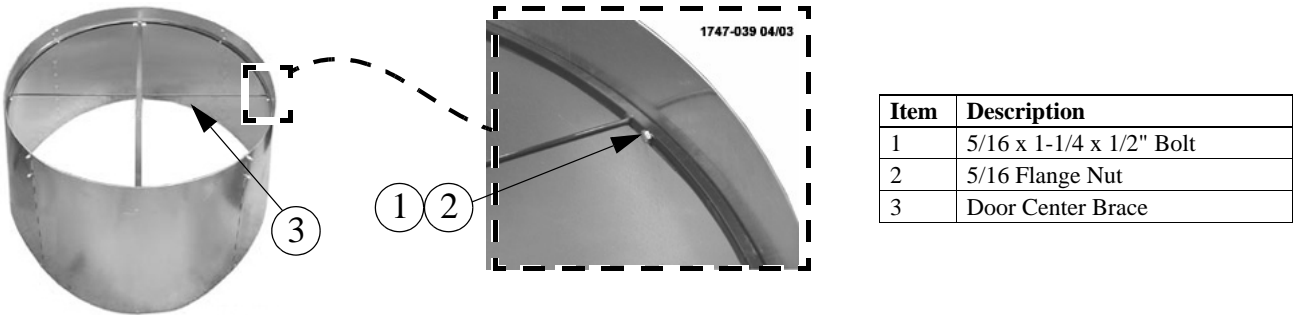


Figure 6. Attaching the Ring to the Cone

Turn the Cone over and remove the tape (**Item 1, Figure 7**) from the Door Stop Cable (**Item 2**).

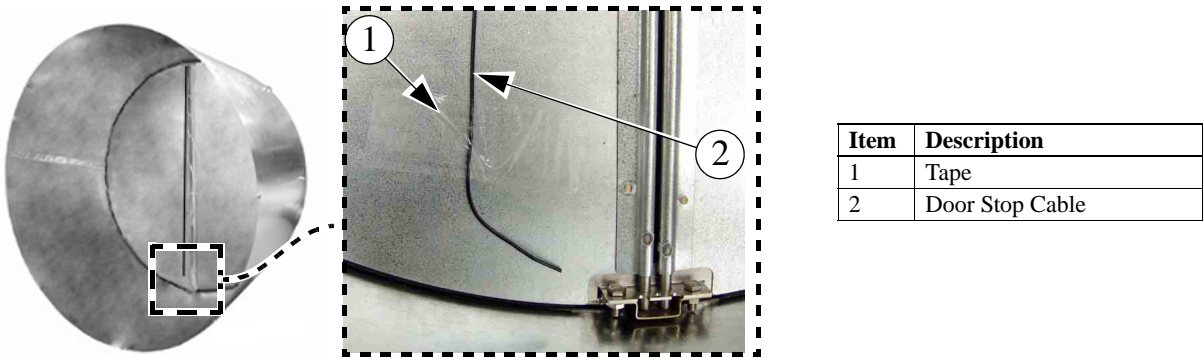
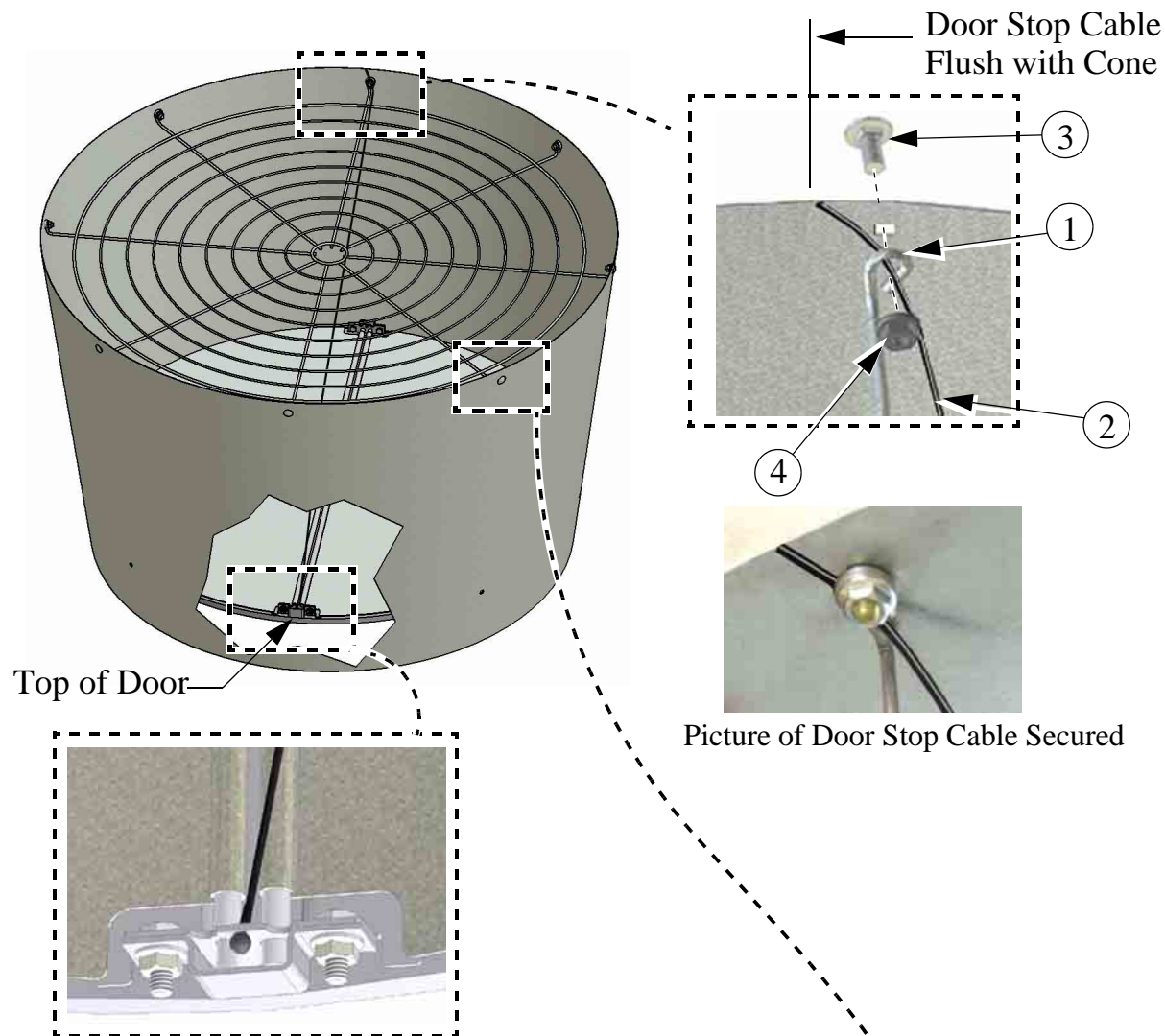


Figure 7. Remove tape from Door Stop Cable

## Attaching the Door Stop Cable to Grill, and the Grill to the Cone

**Step 1:** Line up the Grill Eyehooks with the holes in the Cone. Thread the free end of the Door Stop Cable (Nylon Cable) (Item 2) through the bottom Grill Eyehook (Item 1) until it is flush with the Cone and secure it with a 5/16-18 Carriage Bolt (Item 3) and Flange Nut (Item 4) as shown.



**Step 2:** Use 5/16 Carriage Bolts (Item 3) and Nuts (Item 4) to fasten Grill to Cone at remaining 7 locations.

Item	Description
1	Bottom Grill Eyehook
2	Door Stop Cable (Nylon Cable)
3	5/16-18 x .625 Carriage Bolt
4	5/16-18 Flange Nut

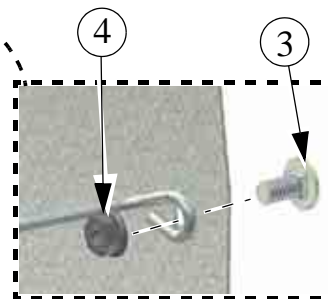


Figure 8. Attaching Fan Cable and Grill

Attaching the Cone

Attaching Cone Brackets to Shroud

Use 5/16 x 1/2" Carriage Bolts (Item 1, Figure 9) and 5/16 Flange Nuts (Item 2) to attach the four Cone Brackets (Item 3) to the Fan Shroud as shown below.

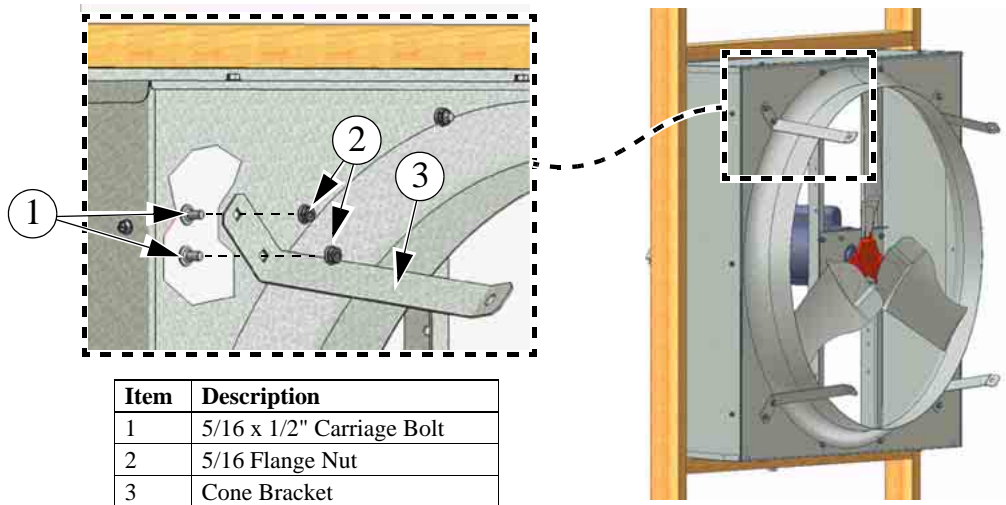


Figure 9. Attaching Cone Brackets to Shroud

Attaching Cone to Cone Brackets

Mounting the Cone and Door Assembly to the Fan requires at least two people. Pick up and orient the Cone with the Fan Cable attached at the top (see Figure 8 on previous page) and rest the Cone on top of the Fan Orifice as shown. Attach the top of the Cone to the two top Cone Brackets (Item 1, Figure 10) with the Bolts that were previously threaded through the Ring and Cone, and secure with 5/16 Flange Nuts (Item 2). Only hand tighten the Nuts at this time. Working around the Fan Orifice from inside the fan, in a circular motion, slide the Cone over the Fan Orifice. The Cone will Fit snug. Use the Bolts previously threaded through the Ring and Cone and hand tighten the 5/16 Flange Nuts to secure the bottom of the Cone to the two Bottom Cone Brackets (Item 3).

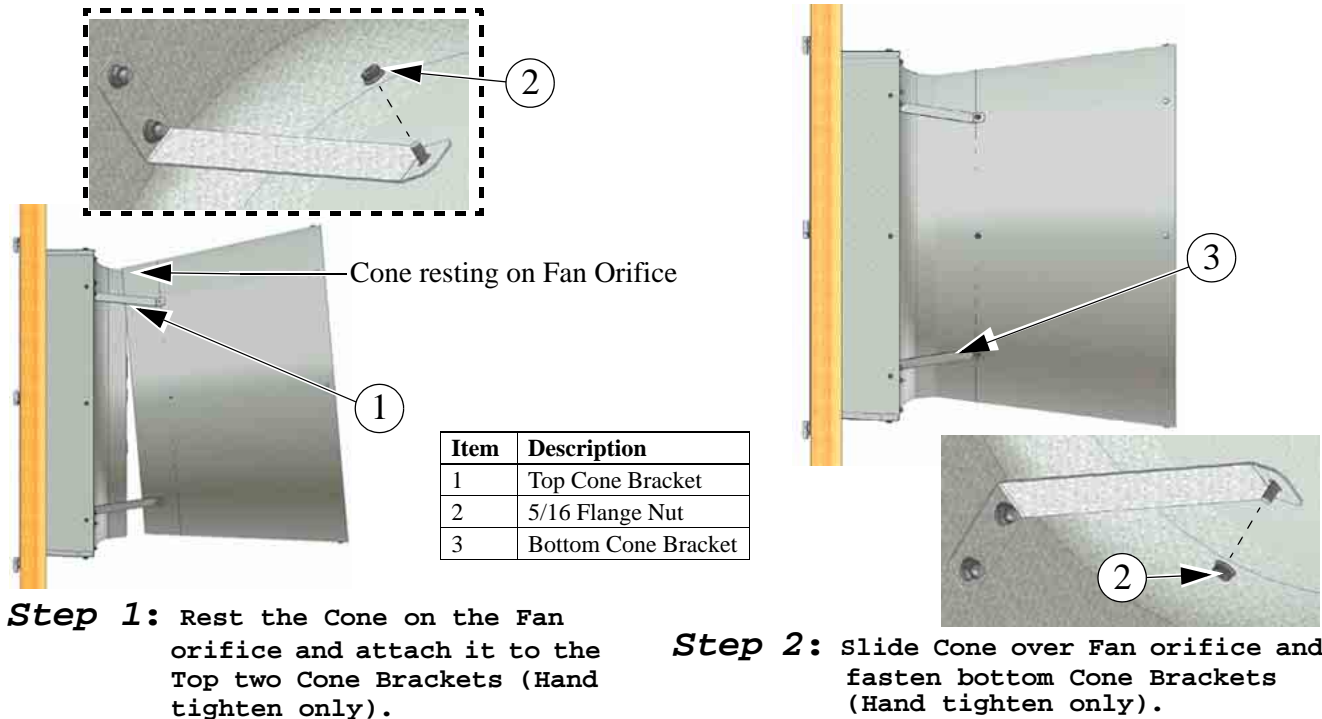
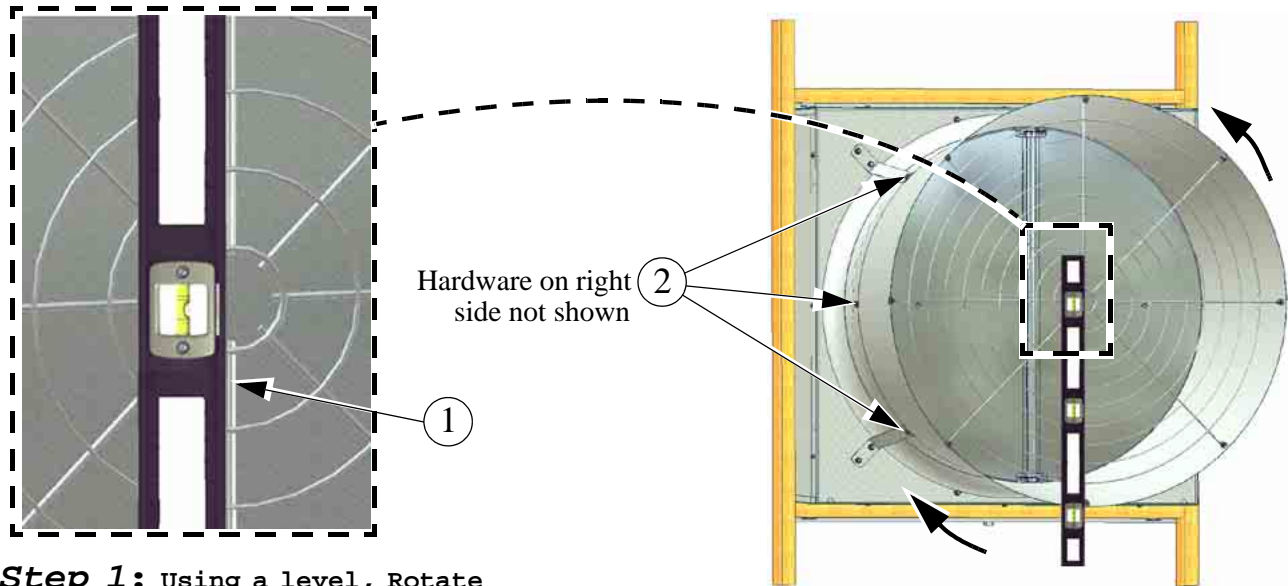


Figure 10. Attaching Cone to Cone Brackets



## Leveling Doors and tightening down Cone Hardware

Use a Level and rotate the Cone and Door Assembly until the Center Screen Wire (**Item 1, Figure 11**) is Vertical (**See Figure**). Once the Cone and Door Assembly is vertical, tighten the four 5/16 Flange Nuts (**Item 2**) holding the Cone to the Cone Brackets and also the four 5/16 Flange Nuts holding the Cone Panels together that were hand tightened in **Figure 4**.



**Step 1:** Using a level, Rotate the Cone and Door Assembly until the Center Grill Wire is vertical

**Step 2:** Tighten down four 5/16 Flange Nuts holding the Cone to the Cone Brackets and the ones holding the Cone Panels together. (Hardware on right side of Fan not shown)

Item	Description
1	Center Grill Wire
2	5/16 Flange Nut

Figure 11. Leveling Doors and tightening down Cone Hardware

# Door Spring Installation

At the middle of the Door Center Brace (**Item 1, Figure 12**), attach the Spring Mounting Bracket (**Item 2, Included in the Parts Package**) as shown in **Step 1 below**. Hook the rounded ends of the Door Springs (**Item 3**) onto the Spring Mounting Bracket. Stretch the Door Springs out and hook them on the 3/32" holes (**Item 4**) in the Doors (**See Step 2**).

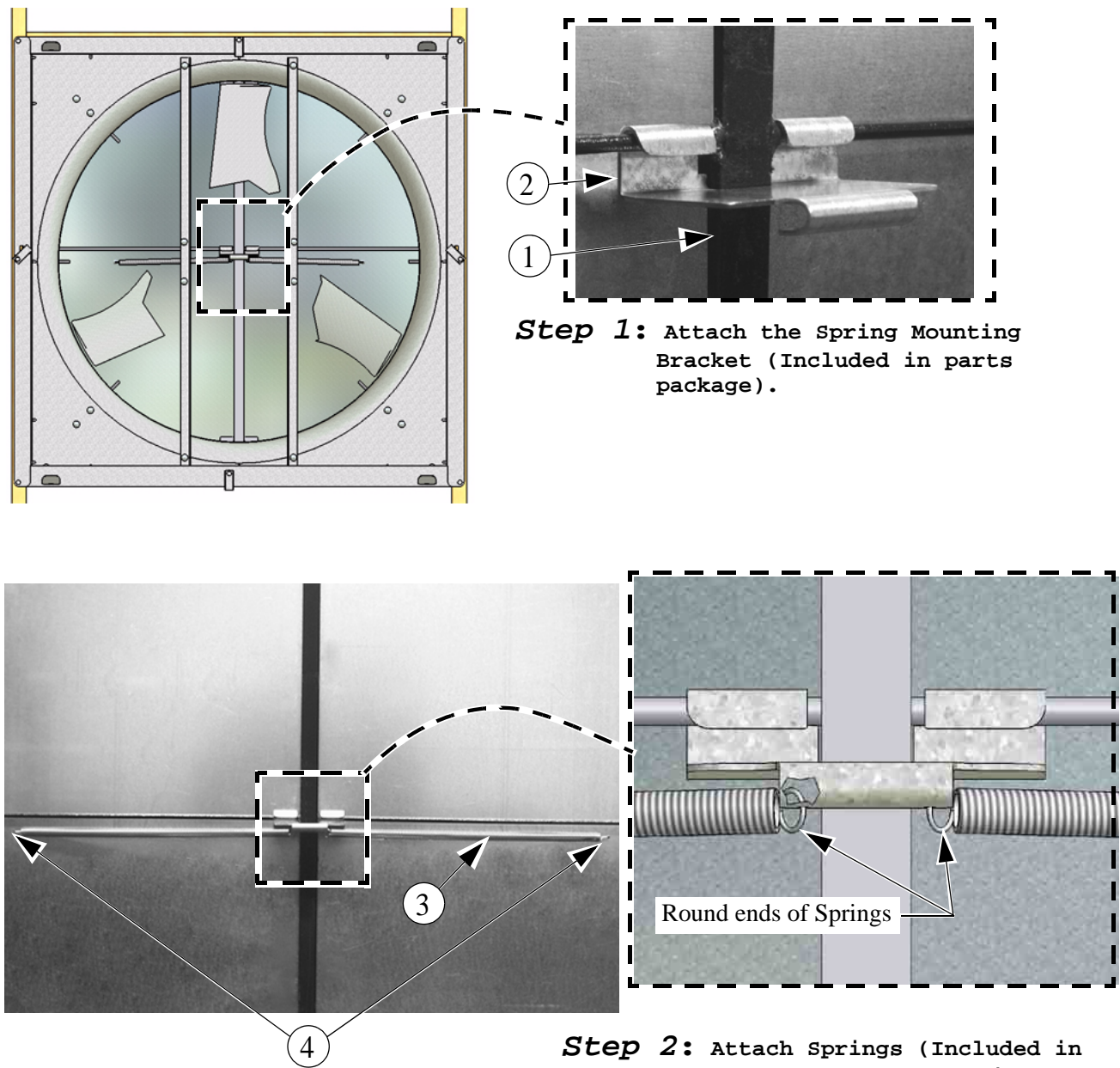
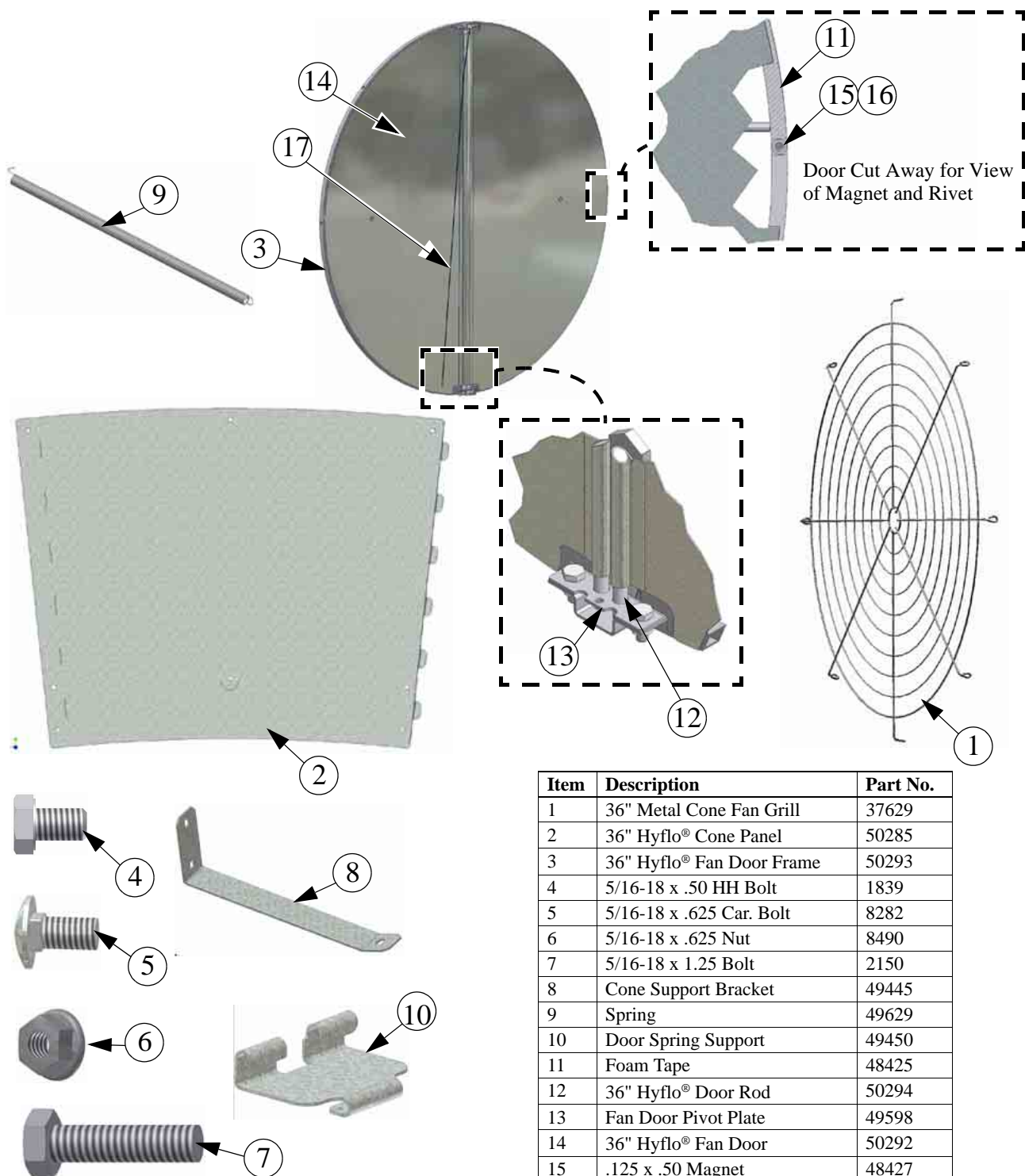


Figure 12. Attaching the Spring Mounting Bracket

## Kit Parts



Item	Description	Part No.
1	36" Metal Cone Fan Grill	37629
2	36" Hyflo® Cone Panel	50285
3	36" Hyflo® Fan Door Frame	50293
4	5/16-18 x .50 HH Bolt	1839
5	5/16-18 x .625 Car. Bolt	8282
6	5/16-18 x .625 Nut	8490
7	5/16-18 x 1.25 Bolt	2150
8	Cone Support Bracket	49445
9	Spring	49629
10	Door Spring Support	49450
11	Foam Tape	48425
12	36" Hyflo® Door Rod	50294
13	Fan Door Pivot Plate	49598
14	36" Hyflo® Fan Door	50292
15	.125 x .50 Magnet	48427
16	1/8 x .40 Pop Rivet	48936
17	Cable Assembly	50618-3



**This Page left Blank Intentionally.....**



## **Made to work. Built to last.**

Note: The original, authoritative version of this manual is the [English] version produced by CTB, Inc. or any of its subsidiaries or divisions, (hereafter collectively referred to as "CTB"). Subsequent changes to any manual made by any third party have not been reviewed nor authenticated by CTB. Such changes may include, but are not limited to, translation into languages other than [English], and additions to or deletions from the original content. CTB disclaims responsibility for any and all damages, injuries, warranty claims and/or any other claims associated with such changes, inasmuch as such changes result in content that is different from the authoritative CTB-published [English] version of the manual. For current product installation and operation information, please contact the customer service and/or technical service departments of the appropriate CTB subsidiary or division. Should you observe any questionable content in any manual, please notify CTB immediately in writing to: CTB Legal Department, P.O. Box 2000, Milford, IN 46542-2000 USA.

### **Revisions to this Manual**

<b>Page No.</b>	<b>Description of Change</b>
Various	Changed to Longer Cable and deleted Split Bolt and Nut.

**Contact your nearby Chore-Time distributor or representative for additional parts and information.**

**CTB Inc.  
P.O. Box 2000 • Milford, Indiana 46542-2000 • U.S.A.  
Phone (574) 658-4101 • Fax (877) 730-8825  
E-Mail: [ctb@ctbinc.com](mailto:ctb@ctbinc.com) • Internet: <http://www.ctbinc.com>**

**Printed in the U.S.A.**