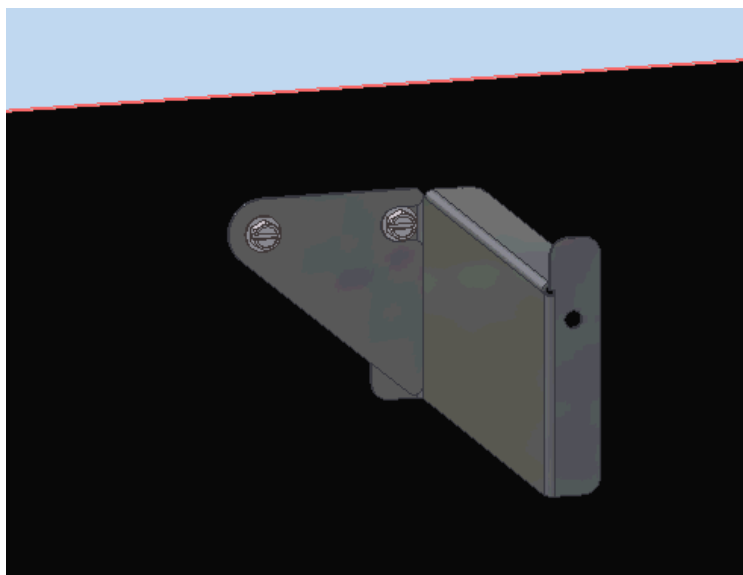
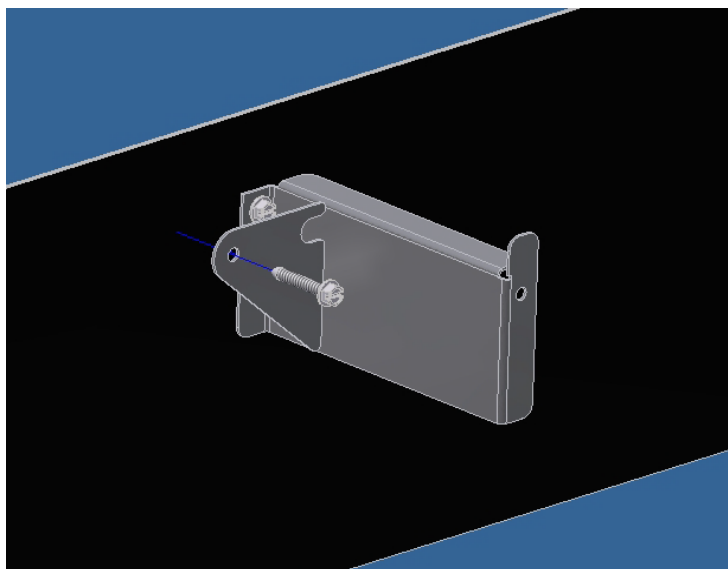


## Trough Bracket Stabilizer Brace Installation Instruction

(Kit p/n 52596-64)

1. Turn Evaporative Cooling System off.
2. Remove Cooling Pads and Pad Supports to gain access to the Trough Supports.
3. Straighten Trough Support Bracket making sure it is vertical. Tighten lag screw if loose.
4. Position Trough Bracket Stabilizer Brace against Trough Support Bracket and install the lag screw as shown in picture.
5. Repeat steps #3 through #4 for each Trough Support Bracket.
6. Reinstall Pad Supports and Cooling Pad.
7. Turn Evaporative Cooling System on.
8. Note: Each kit p/n 52596-64 contains enough braces and lag screws for an 80 foot evaporative cooling system.



| BOM for Trough Bracket Stabilizer Brace Kit |     |   |
|---|-----|---|
| P/N   | Qty | Description                                 |
|   | 64  | BRACE,TROUGH BRACKET STABILIZER             |
| 41561                                       | 64  | SCREW,LAG HXWH SS 1/4-10x1.5                |
| MV2354                                      | 1   | INST,TROUGH BRACKET STABILIZER INSTALLATION |