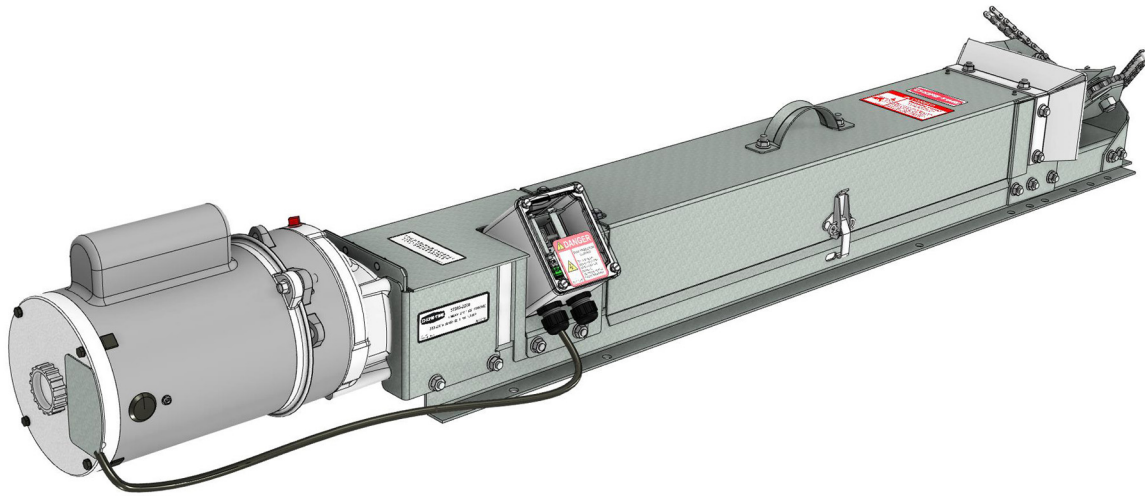


Swivel Top Linear Lift™ Installation and Operators Instruction Manual

Installation and Operators Manual

Installation and Operators Manual



For additional parts and information, contact your nearest Chore-Time distributor or representative.
Find your nearest distributor at: www.choretime.com/contacts

Contents

Topic	Page
Introduction	4
Safety	4
Safety–Alert Symbol	4
Follow Safety Instructions	4
Decal Descriptions	4
Limited Warranty	5
Planning	6
Tools Required	6
Layout Diagrams	6
Tools Required Cable/Pulley Combinations	6
Available Sizes and Speed of Operation	7
Installation	8
Vent Plug Locations	8
Ceiling Installation	8
Wall Mount	9
Horizontal Mount (Power Unit Right)	9
Horizontal Mount (Power Unit Left)	9
Swivel Top Pulley/Sprocket Angle Adjustment	10
Cable Version	10
Sprocket Version	10
Linear Lift™ without Swivel Pulleys	11
Mounting	11
"To the Side" Cable/Chain Routing Systems	11
"Straight-Out" Cable/Chain Routing Systems	12
Ceiling Installations	12
Common Installation Layouts	13
Ceiling Mount Swivel Top Linear-Lift™ Installation	13
Two-Side Tunnel Curtain Application	13
Side Wall Swivel Top Linear-Lift™ Installation	14
Side Wall Swivel Top Linear-Lift™ Installation	14
Oil Recommendation	15
Grease Recommendation	15
Swivel Top Linear-Lift™ Stop Switch Adjustment	15
Potentiometer Installation	16
Wiring	18
Potentiometer Wiring	18
Switch Wiring	18
Wiring 2 (230V) Linear Lifts™ in Parallel (To Prevent Back-feed between Lifts)	19
Wiring 2 (115V) Linear Lifts™ in Parallel (To Prevent Back-feed between Lifts)	20
Operation	21
Potentiometer Connection and Operation	21

Contents - continued

Topic	Page
Parts Listing	23
Linear Lift with Brass Nut and Cable: 57281-XXXO Swivel Top, 57281-XXXL Straight Out Top	23
Linear Lift with Brass Nut and Cable: 57281-XXXO Swivel Top, 57281-XXXL Straight Out Top. . . .	24
Linear Lift 57282-XXXX with Brass Nut, Chain, and Swivel Top Sprockets	25
Linear Lift 57282-XXXX with Brass Nut, Chain, and Swivel Top Sprockets	26
Lift with Plastic Nut: 57283-XXXO Chain & Sprockets, 57283-XXXL Cable & Straight Out Top	27
Lift with Plastic Nut: 57283-XXXO Chain & Swivel Sprockets, 57283-XXXL Cable & Str. Out Top . .	28
Pulley (47876) and Sprocket (47866) Swivel Top Assembly	29
50559 Top Cap Assembly.	29
Optional Pulleys and Accessories.	30
Linear-Lift Switch Assembly (57284)	31
Linear Lift Cover Assembly with Potentiometer (57208)	32
Power Unit Part Numbers.	33

Introduction

Safety

Caution, Warning and Danger Decals have been placed on the equipment to warn of potentially dangerous situations. Care should be taken to keep this information intact and easy to read at all times. Replace missing or damaged safety decals immediately.

Safety–Alert Symbol



This is a safety–alert symbol. When you see this symbol on your equipment, be alert to the potential for personal injury. This equipment is designed to be installed and operated as safely as possible...however, hazards do exist.

Understanding Signal Words

Signal words are used in conjunction with the safety–alert symbol to identify the severity of the warning.



DANGER indicates an imminently hazardous situation which, if not avoided, **WILL** result in death or serious injury.



WARNING indicates a potentially hazardous situation which, if not avoided, **COULD** result in death or serious injury.



CAUTION indicates a hazardous situation which, if not avoided, **MAY** result in minor or moderate injury.

Follow Safety Instructions

Carefully read all safety messages in this manual and on your equipment safety signs. Follow recommended precautions and safe operating practices.

Keep safety signs in good condition. Replace missing or damaged safety signs.

Decal Descriptions

DANGER : Moving Auger

This decal is placed on the End Cap Weldment and Clean-out cover. Severe personal injury will result, if the electrical power is not disconnected, prior to servicing the equipment.



DANGER: Electrical Hazard

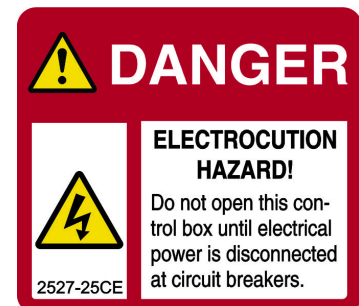
Disconnect electrical power before inspecting or servicing equipment unless maintenance instructions specifically state otherwise.

Ground all electrical equipment for safety.

All electrical wiring must be done by a qualified electrician in accordance with local and national electric codes.

Ground all non-current carrying metal parts to guard against electrical shock.

Electrical disconnects and over current protection are not supplied with the equipment.



Limited Warranty

CTB, Inc. (“Chore-Time”) warrants the new CHORE-TIME Linear Lift™ manufactured by Chore-Time to be free from defects in material or workmanship under normal usage and conditions, for One (1) year from the date of installation by the original purchaser (“Warranty”). Chore-Time provides for an extension of the aforementioned Warranty period (“Extended Warranty Period”) with respect to certain Product parts. If such a defect is determined by Chore-Time to exist within the applicable period, Chore-Time will, at its option, (a) repair the Product or Component Part free of charge, F.O.B. the factory of manufacture or (b) replace the Product or Component Part free of charge, F.O.B. the factory of manufacture. This Warranty is not transferable, and applies only to the original purchaser of the Product.

CONDITIONS AND LIMITATIONS

THIS WARRANTY CONSTITUTES CHORE-TIME’S ENTIRE AND SOLE WARRANTY AND CHORE-TIME EXPRESSLY DISCLAIMS ANY AND ALL OTHER WARRANTIES, INCLUDING, BUT NOT LIMITED TO, EXPRESS AND IMPLIED WARRANTIES, INCLUDING, WITHOUT LIMITATION, WARRANTIES AS TO MERCHANTABILITY OR FITNESS FOR PARTICULAR PURPOSES. CHORE-TIME shall not be liable for any direct, indirect, incidental, consequential or special damages which any purchaser may suffer or claim to suffer as a result of any defect in the Product. Consequential or Special Damages as used herein include, but are not limited to, lost or damaged products or goods, costs of transportation, lost sales, lost orders, lost income, increased overhead, labor and incidental costs, and operational inefficiencies. *Some jurisdictions prohibit limitations on implied warranties and/or the exclusion or limitation of such damages, so these limitations and exclusions may not apply to you. This warranty gives the original purchaser specific legal rights. You may also have other rights based upon your specific jurisdiction.*

Compliance with federal, state and local rules which apply to the location, installation and use of the Product are the responsibility of the original purchaser, and CHORE-TIME shall not be liable for any damages which may result from non-compliance with such rules.

The following circumstances shall render this Warranty void:

- Modifications made to the Product not specifically delineated in the Product manual.
- Product not installed and/or operated in accordance with the instructions published by the CHORE-TIME.
- All components of the Product are not original equipment supplied by CHORE-TIME.
- Product was not purchased from and/or installed by a CHORE-TIME authorized distributor or certified representative.
- Product experienced malfunction or failure resulting from misuse, abuse, mismanagement, negligence, alteration, accident, or lack of proper maintenance, or from lightning strikes, electrical power surges or interruption of electricity.
- Product experienced corrosion, material deterioration and/or equipment malfunction caused by or consistent with the application of chemicals, minerals, sediments or other foreign elements.
- Product was used for any purpose other than for the care of poultry and livestock.
-

The Warranty and Extended Warranty may only be modified in writing by an officer of CHORE-TIME. CHORE-TIME shall have no obligation or responsibility for any representations or warranties made by or on behalf of any distributor, dealer, agent or certified representative.

Effective: **April 2014**

Planning

Tools Required

Tools needed to install your Linear Lift include:

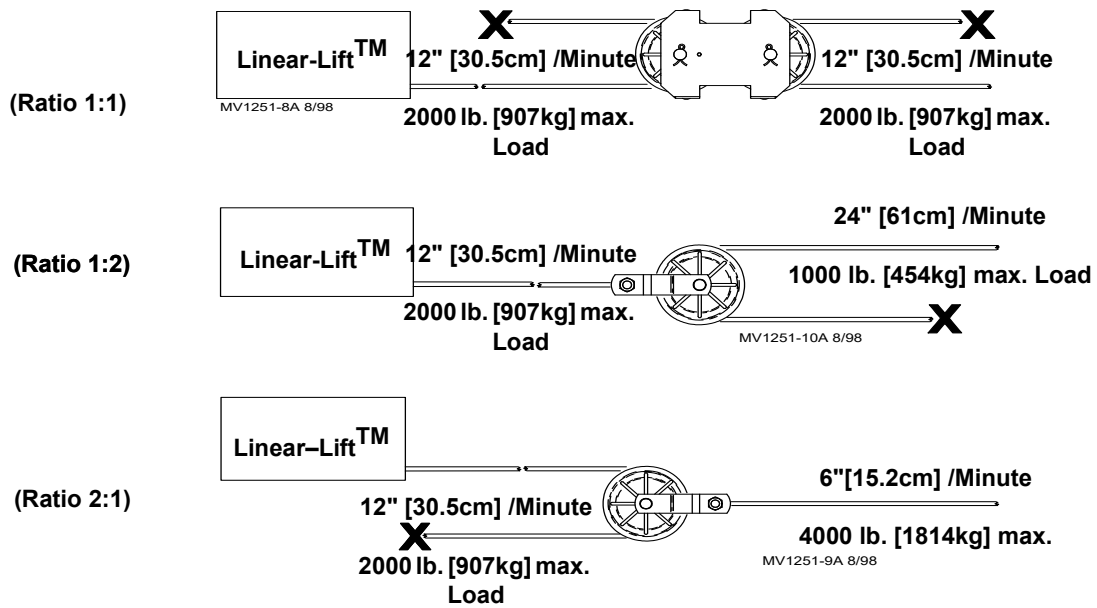
5/16" Nut Driver, Drive Ratchet, 1/2" Socket, Wire Cutters, Wire Strippers, Electrical Tape, 3/32" Allen Wrench.

Layout Diagrams

The Swivel Top **Linear-Lift** is designed to open and close Inlet Curtains or Baffle Boards. It may be wired into the ventilation control (i.e. Static Pressure Inlet Control, Chore-Tronics, Super Selector, etc.)

Tools Required Cable/Pulley Combinations

62 RPM Units



31 RPM Units

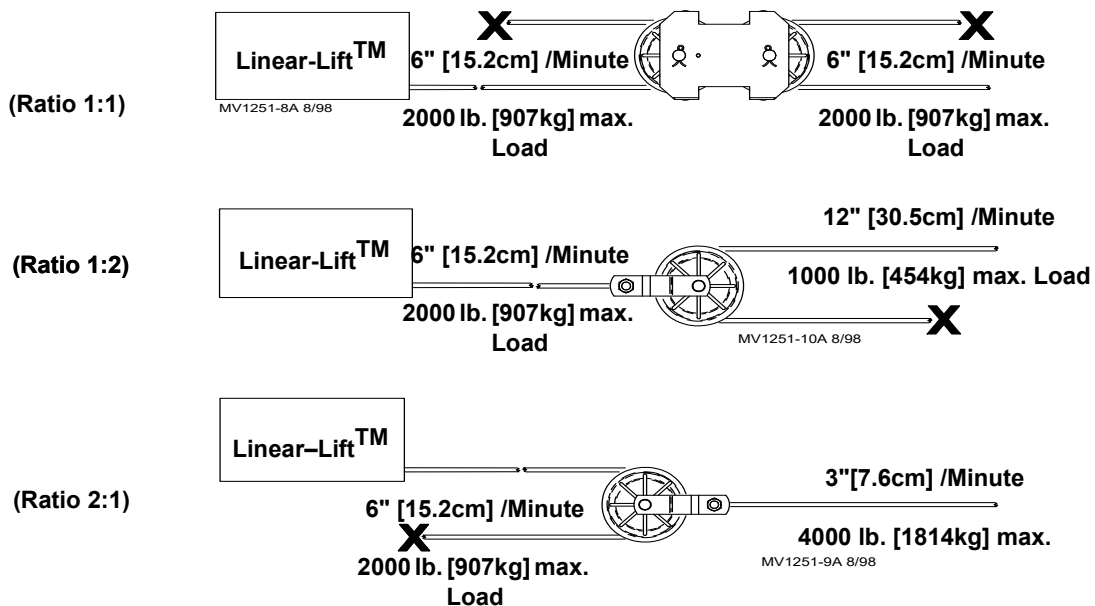


Figure 1. Tools Required/Pulley Combinations

Available Sizes and Speed of Operation

•The Swivel Top Linear-Lift™ is available in 22", 32", 44", 62", and 72" stroke.

Linear Lift with Brass Nut and Cable: 57281-XXX0 Swivel Top, 57281-XXXL Straight Out Top

62 RPM Version / 12" Per Minute [30.5cm Per Min.]				
Stroke	230 Volt Swivel Top	230 Volt Straight Out Top	115 Volt Swivel Top	115 Volt Straight Out Top
22" Stroke	57281-2260	57281-226L	57281-2160	57281-216L
32" Stroke	57281-3260	57281-326L	57281-3160	57281-316L
44" Stroke	57281-4260	57281-426L	57281-4160	57281-416L
62" Stroke	57281-6260	57281-626L	57281-6160	57281-616L

31 RPM Version / 6" Per Minute [15.2cm Per Min.]		
Stroke	230 Volt Swivel Top	230 Volt/ Straight Out Top
22" Stroke	57281-2230	57281-223L
32" Stroke	57281-3230	57281-323L
44" Stroke	57281-4230	57281-423L
62" Stroke	57281-6230	57281-623L

Linear-Lift, 57282-XXXX, with Brass Nut, Chain, and Swivel Top Sprockets

62 RPM Version / 12" Per Min. [30.5cm Per Min.]		
Stroke	230 Volt	115 Volt
22" Stroke	57282-2260	57282-2160
32" Stroke	57282-3260	57282-3160
44" Stroke	57282-4260	57282-4160
62" Stroke	57282-6260	57282-6160

31 RPM Version / 6" Per Minute [15.2cm Per Min.]	
Stroke	230 Volt
22" Stroke	57282-2230
32" Stroke	57282-3230
44" Stroke	57282-4230
62" Stroke	57282-6230

Linear-Lift with Plastic Nut: 57283-XXX0 Chain & Swivel Sprockets, 57283-XXXL Cable & Straight Out Top

62 RPM Version / 12" Per Min. [30.5cm Per Min.]				
Stroke	230 Volt Swivel Top	230 Volt Straight Out Top	115 Volt Swivel Top	115 Volt Straight Out Top
22" Stroke	57283-2260	57283-226L	57283-2160	57283-216L
32" Stroke	57283-3260	57283-326L	57283-3160	57283-316L
44" Stroke	57283-4260	57283-426L	57283-4160	57283-416L
62" Stroke	57283-6260	57283-626L	57283-6160	57283-616L
72" Stroke	57283-7260	57283-726L	57283-7160	57283-716L

31 RPM Version / 6" Per Minute [15.2cm Per Min.]		
Stroke	230 Volt Swivel Top	230 Volt Straight Out Top
22" Stroke	57283-2230	57283-223L
32" Stroke	57283-3230	57283-323L
44" Stroke	57283-4230	57283-423L
62" Stroke	57283-6230	57283-623L
72" Stroke	57283-7230	57283-723L

Potentiometer Part Numbers

If a Potentiometer is desired, order the Potentiometer Kit (Part No. 57208)

Installation

Vent Plug Locations

It may be necessary to re-locate the Plugs in the Linear Lift Gearhead depending on the orientation of your installation. It is recommended that a Vent Plug (Included in parts package) be installed in the highest location to allow for proper venting. It is also recommended to install the Magnetic Plug as low as possible to collect any debris to avoid damage. There is a 90° Elbow included in the parts package that can be used to get the Vent Plug high enough to be above oil fill level or in some cases to allow for easier filling of oil. The following instructions are what Chore-Time recommends.

Ceiling Installation

1. Take out the Temporary Red Plug (3516) and discard it.
2. Take out the Magnetic Plug (30160) and install it where the Red Plug was **as shown**.
3. Install a 90° Elbow (15405) and Vent Plug (3523) where the Magnetic Plug was previously **as shown**.
4. After re-locating Plugs Refill oil in the gear housing if necessary before operating.

It may be necessary to provide a recess in the mounting surface for clearance of the 90° Elbow and ventplug, or by mounting the Swivel Top Linear-Lift™ on 2 x 10 lumber as shown.

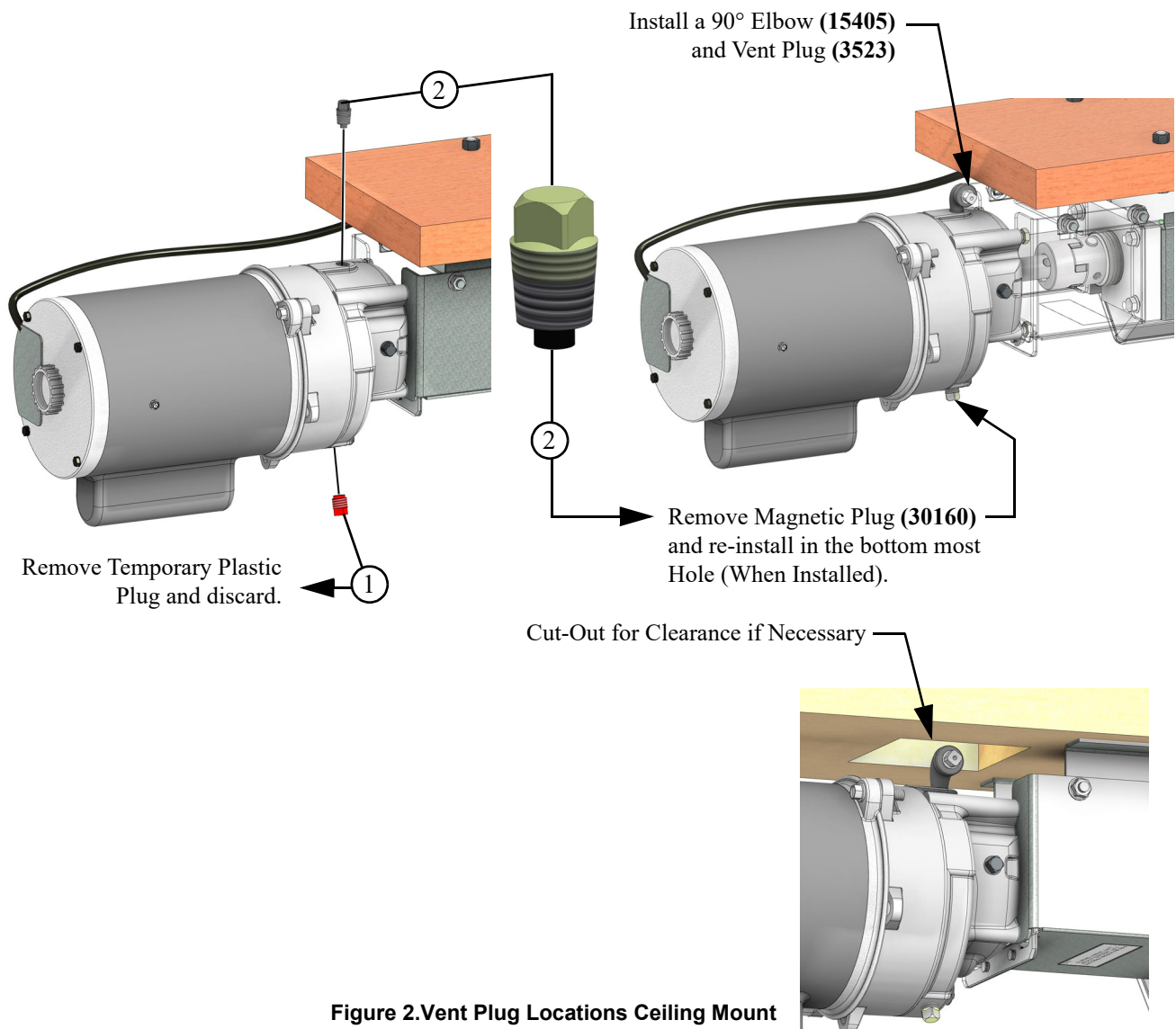


Figure 2.Vent Plug Locations Ceiling Mount

Wall Mount

Horizontal Mount (Power Unit Right)

Remove Red Plastic Temporary Plug. It is recommended to move Plugs to locations shown below. After re-locating the Plugs, refill oil in the gear housing if necessary before operating.

1. Remove and discard the Red Plastic Plug.
2. Remove the Magnetic Plug (30160) and move it to the lowest position.
3. Install a 90° Elbow (15405) (Included in Parts Package), and Vent Plug (3523) (Included in Parts Package) as shown. This gets the 90° Elbow above the oil Fill Line.

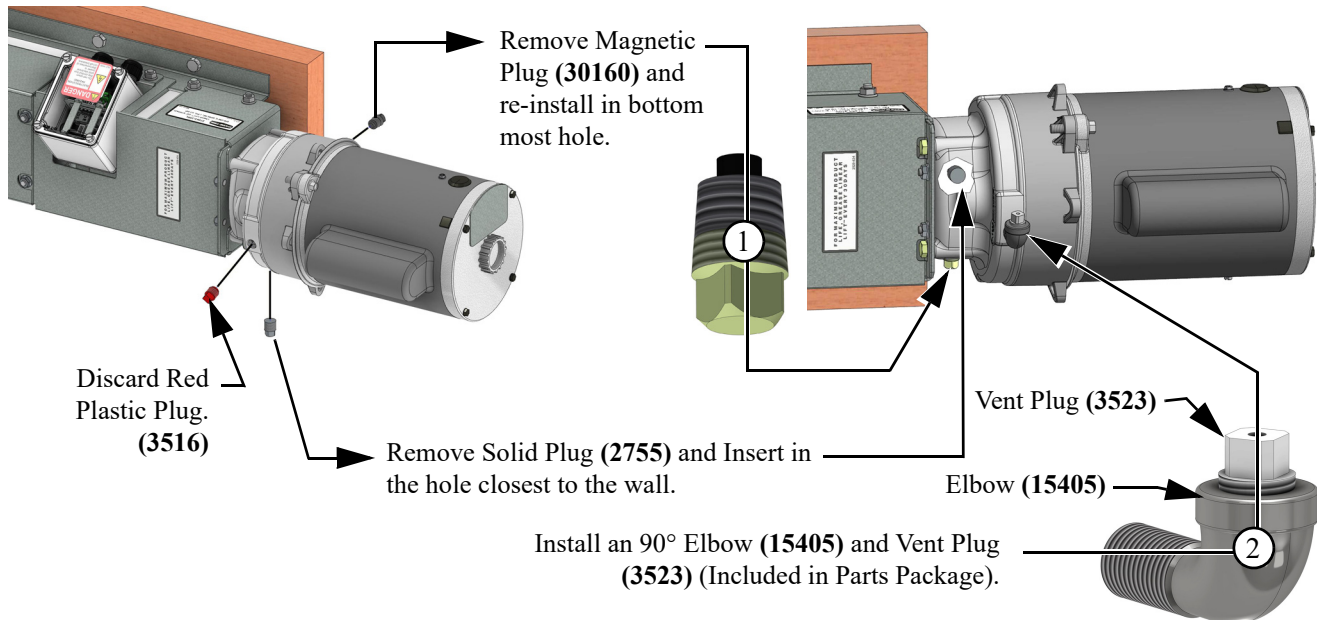


Figure 3. Vent Plug Locations Ceiling Mount

Horizontal Mount (Power Unit Left)

Remove Red Plastic Temporary Plug. It is recommended to move Plugs to locations shown below. After re-locating the Plugs, refill oil in the gear housing if necessary before operating.

1. Leave the Magnetic Plug in the lowest position.
2. Remove the Red Plastic Plug (3516).
3. Remove the Solid Plug (2755) and move it to location shown.

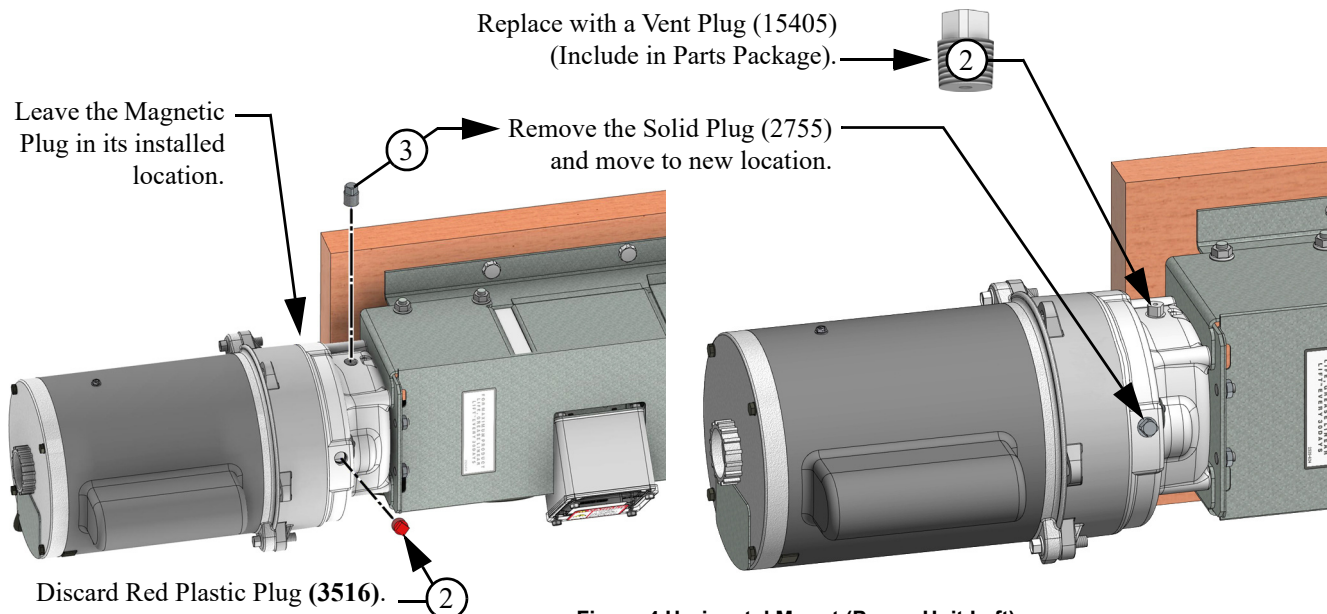


Figure 4. Horizontal Mount (Power Unit Left)

Swivel Top Pulley/Sprocket Angle Adjustment

Cable Version

The Swivel Top Linear-Lift offers a variety of system cable routing options, and can be located in building corners where the system cables are routed directly away from the front of the Linear-Lift™ (See **Figure 5.**). Loosen the Nuts (**Item 1, Figure 5**), to adjust for Pulley angle, then re-tighten once the desired angle has been achieved.

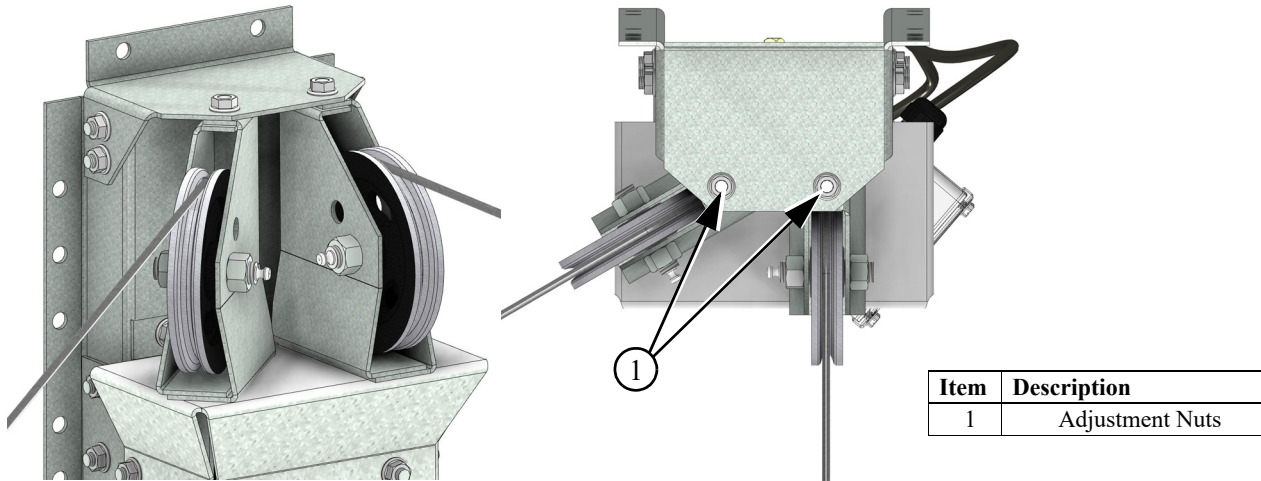


Figure 5. Swivel Top Pulley/Sprocket Angle Adjustment (Cable Version)

Sprocket Version

To adjust the Chain-Drive Version, loosen the Nuts, (**Item 1, Figure 6**) swivel the Pulleys to the desired angle and re-tighten. The Adjustment Bolts (**Item 2**) should rotate freely to allow the chain to line up correctly with the Sprockets. If necessary, use a 3/16 Allen wrench to turn the adjustment bolts for proper alignment of the chain. **Caution: Do not break the Adjustment Bolts loose! Only turn them for proper chain alignment.**

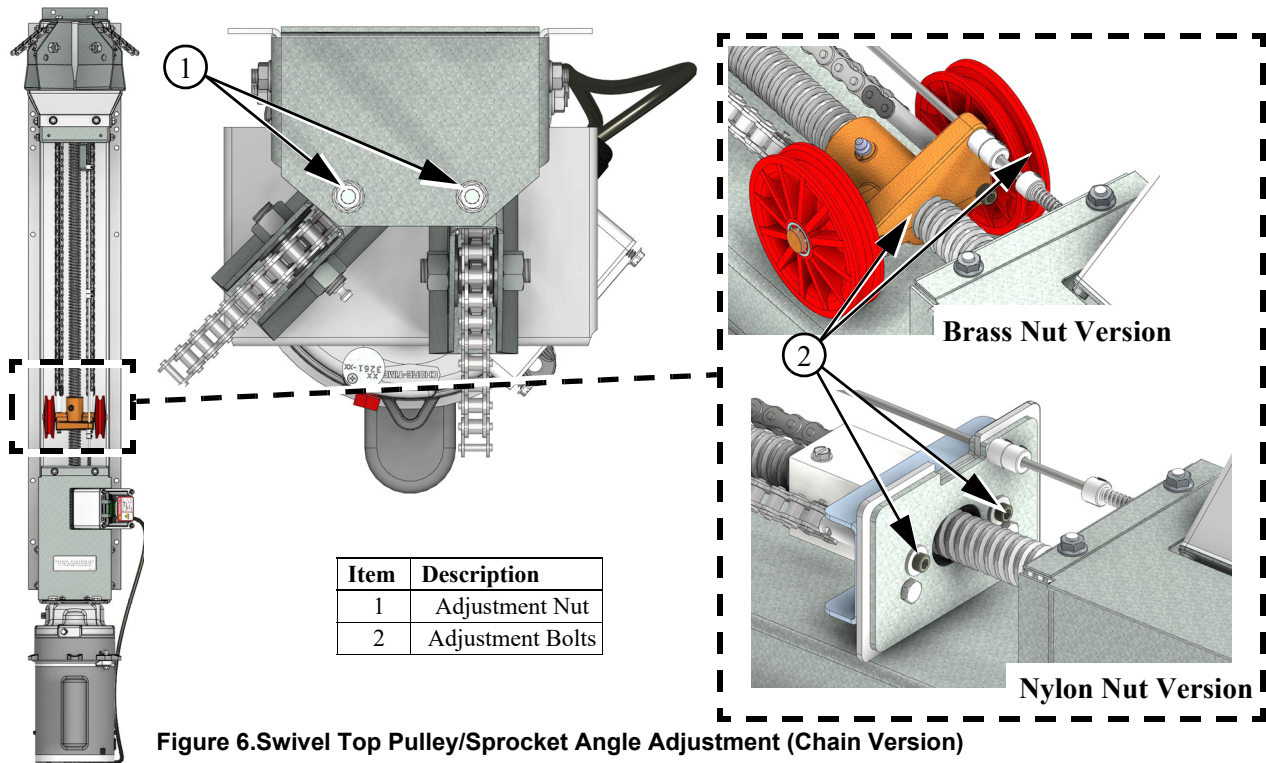


Figure 6. Swivel Top Pulley/Sprocket Angle Adjustment (Chain Version)

Linear Lift™ without Swivel Pulleys

When mounting the Linear Lift™ without swivel pulleys make sure that the Cables come straight out of the end of the lift. If the Cables are at too much of an angle it can cause damage to the Lift or Cable breakage.

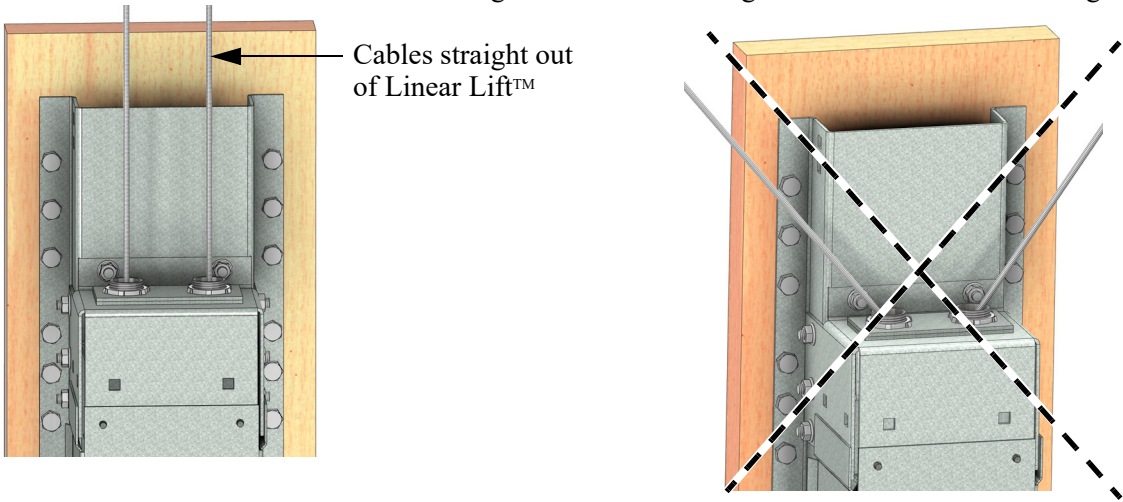


Figure 7.Linear Lift™ without pulleys

Mounting

"To the Side" Cable/Chain Routing Systems

If your cables/chains are routed "to the sides", as opposed to straight away from the Lift, use the Lag Screws provided in the parts package for mounting. (Figure 8 below)

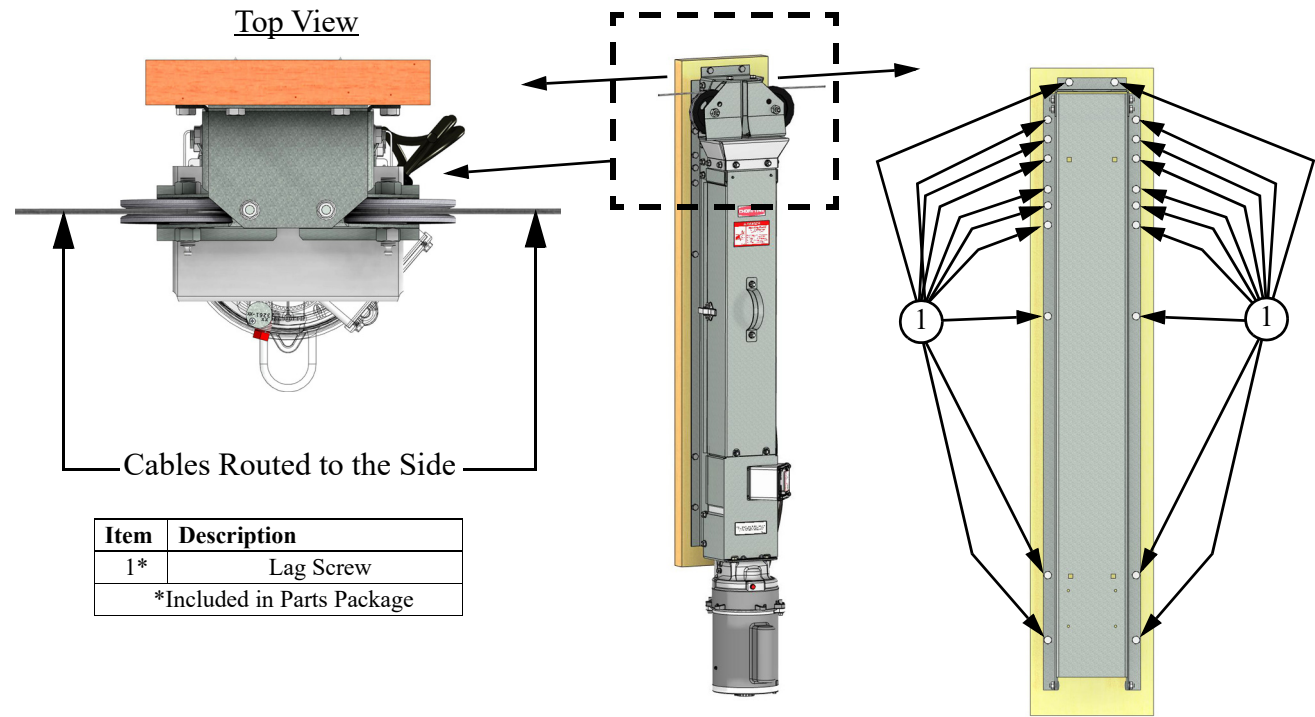


Figure 8.To the Side Lift Mounting (Cable Version Shown)

"Straight-Out" Cable/Chain Routing Systems

If both cables are to be routed "straight off" of the front of the unit, (See **Figure 9.**), consider using Through-Bolts to secure the top of the LIFT to the supporting wall. Use the top 8 mounting holes, **minimum**.

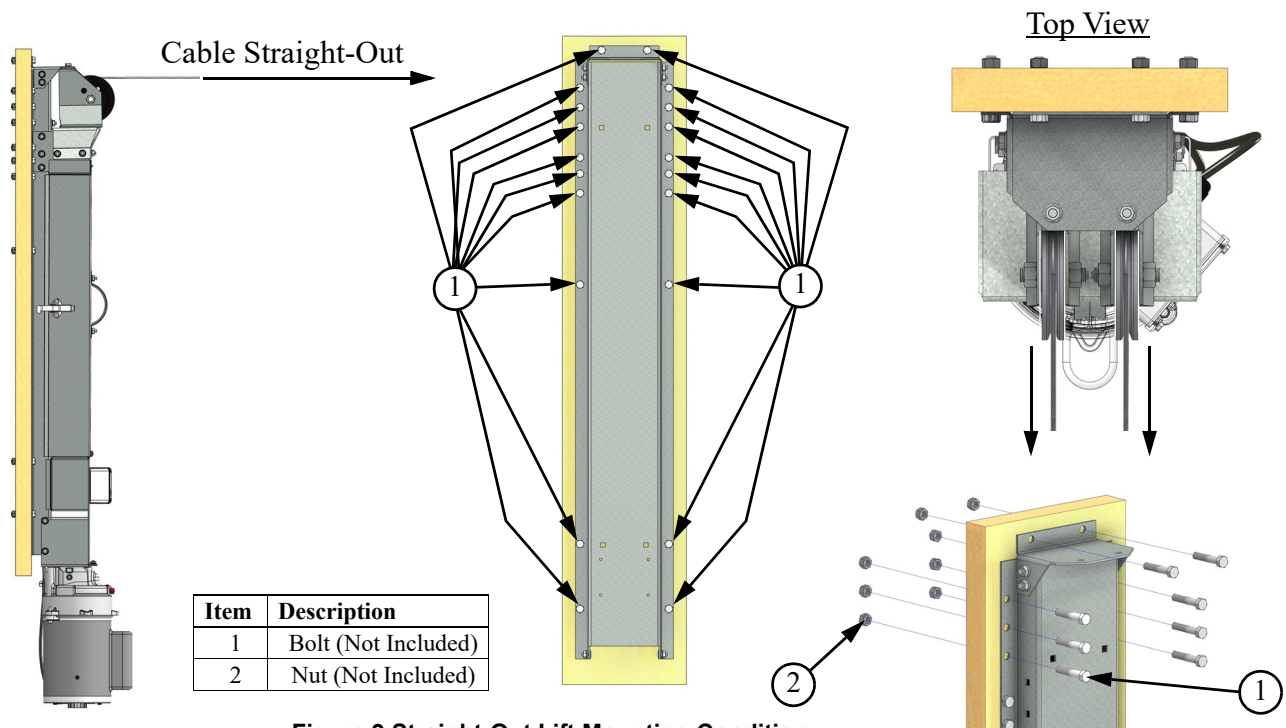


Figure 9. Straight-Out Lift Mounting Condition

Ceiling Installations

The Swivel Top Linear-Lift™ is designed to be mounted on any ceiling where the slope of the ceiling is 2:12 or steeper (See **Figure 10.**). This allows the cable to be routed off the end of the unit for systems where whole house control of both sides of the house with one unit is needed. Use 3/8" Lag Screws, (included in Hardware Package), to attach the unit to the ceiling.

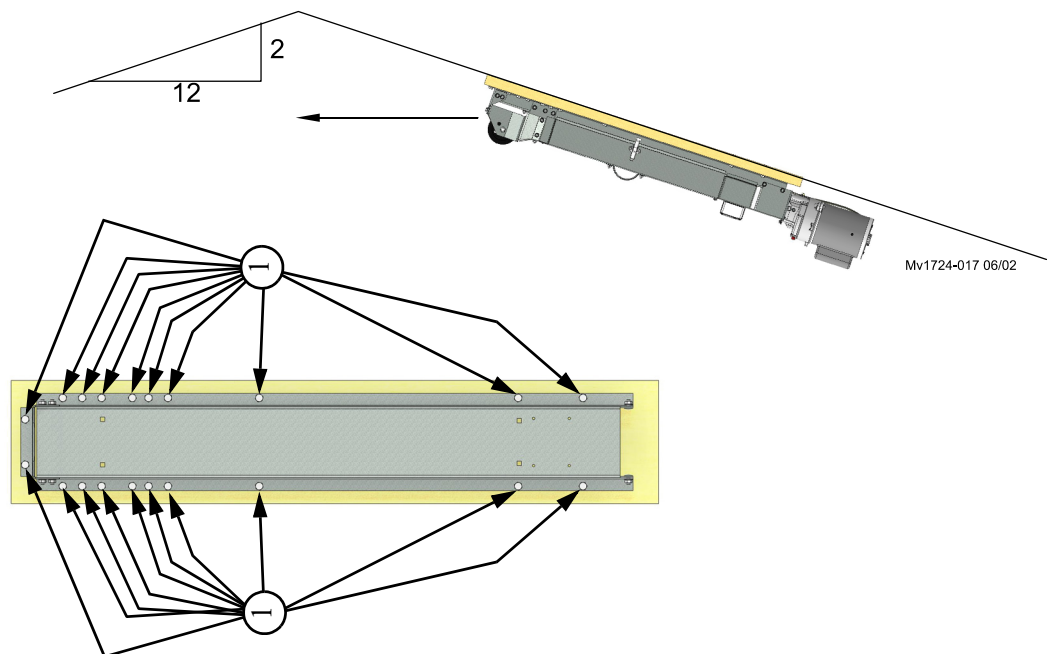
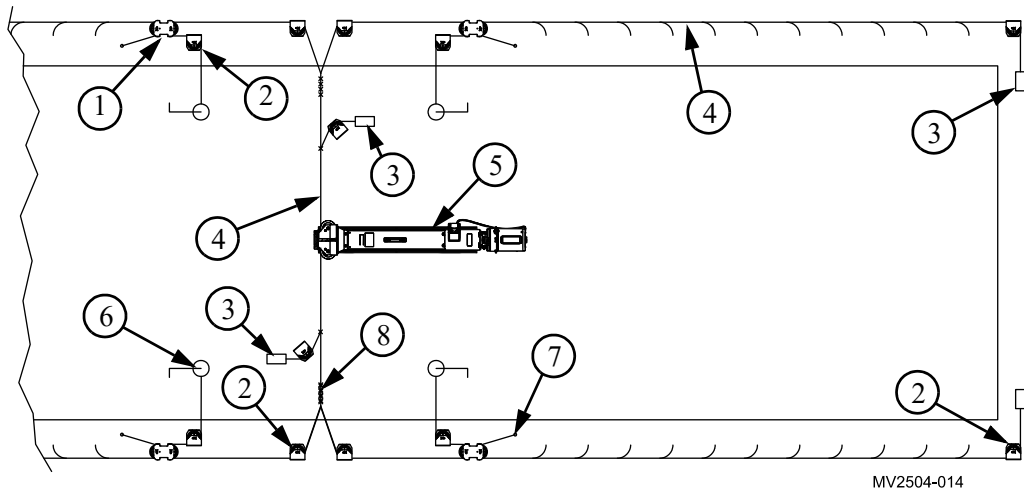


Figure 10. Swivel Top Linear-Lift Installation (ceiling mount)

Common Installation Layouts

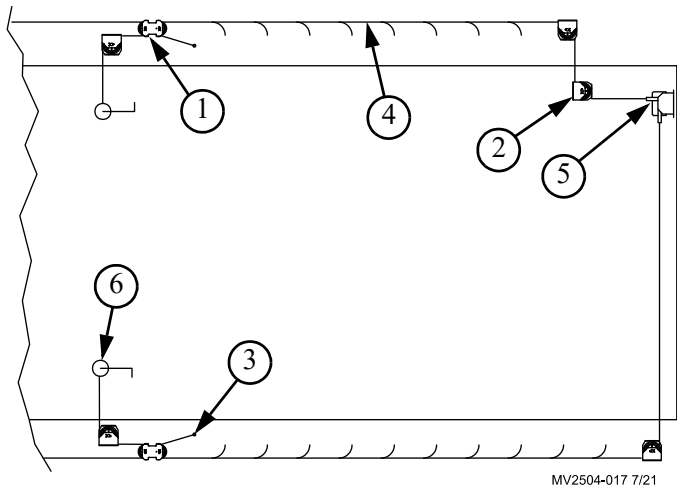
Ceiling Mount Swivel Top Linear-Lift™ Installation



Item	Description	Part No.
1	Pulley Assembly NY 3.5	27772
2	Single Pulley Assembly	27301
3	Anti-Slack Weight or Spring	47958
4	Curtain Cable 3/16-7x19 Recommended	13976
5	Swivel Top Linear-Lift™	Varies
6	Hand Winch Winch Mounting Assembly	1212 1193
7	Tie Down	
8	(3) Cable Clamp	732

Figure 11.Ceiling Mounted Swivel Top Linear-Lift™ pulling (2) curtains (top view)
with a 1:1 double-back cable arrangement

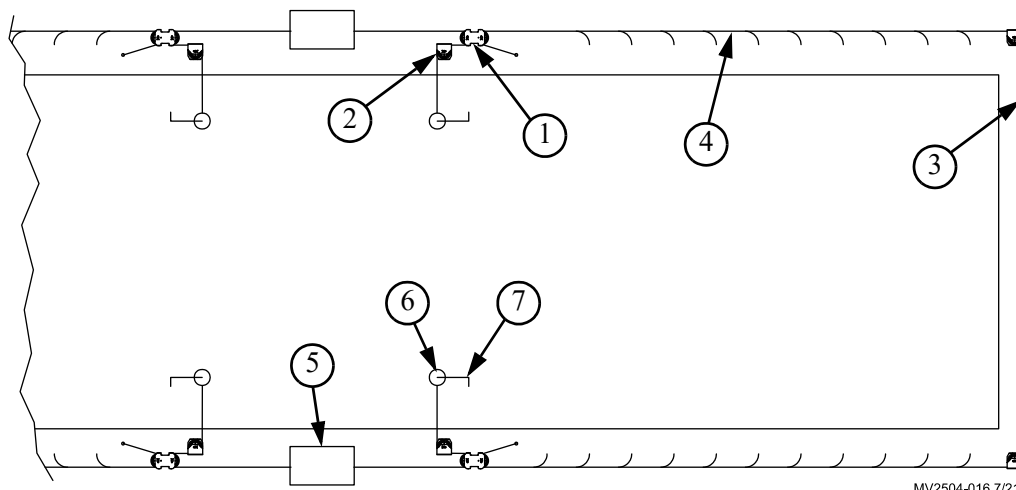
Two-Side Tunnel Curtain Application



Item	Description	Part No.
1	Pulley Assembly NY 3.5	27772
2	Single Pulley Assembly	27301
3	Tie Down	
4	Curtain Cable 3/16-7x19 Recommended	13976
5	Swivel Top Linear-Lift™	Varies
6	Hand Winch Winch Mounting Assembly	1212 1193

Figure 12.Wall Mounted (Corner) Swivel Top Linear-Lift™ pulling (2) curtains (top view)

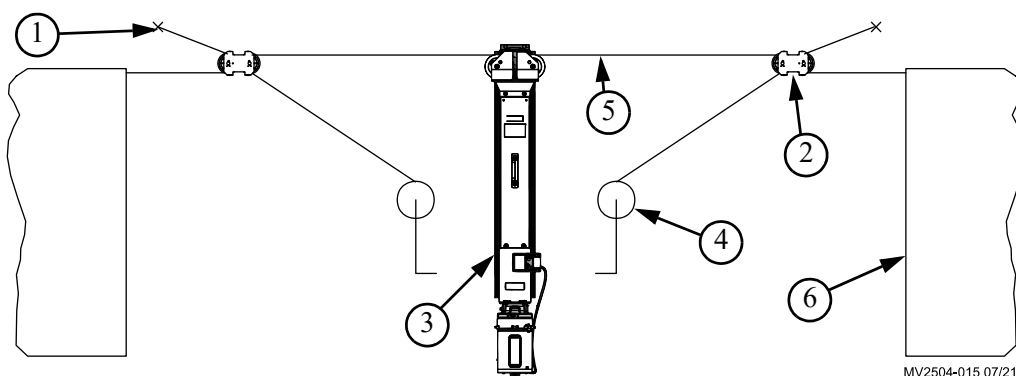
Side Wall Swivel Top Linear-Lift™ Installation



Item	Description	Part No.
1	Pulley Assembly NY 3.5	27772
2	Single Pulley Assembly	27301
3	Anti Slack Weight or Spring	47958
4	Curtain Cable 3/16-7x19 Recommended	13976
5	Swivel Top Linear-Lift™	Varies
6	Hand Winch	1212
7	Winch Mounting Assembly	1193
7	Tie Down	

Figure 13. Wall Mounted (Corner) Swivel Top Linear-Lift™ pulling (2) curtains (top view)

Side Wall Swivel Top Linear-Lift™ Installation



Item	Description	Part No.
1	Tie Down	
2	Pulley Assembly NY 3.5	27772
3	Swivel Top Linear-Lift™	Varies
4	Hand Winch Winch Mounting Assembly	1212 1193
5	Curtain Cable 3/16-7x19 Recommended	13976
6	Curtain	

Figure 14. Side Wall Swivel Top Linear-Lift™ with a 1:1 double-back cable arrangement (front-view)

Oil Recommendation

The gearhead contains 12.8 oz. [.38 Liters] of SAE 40 oil when shipped from factory.

For horizontal and ceiling mounted units, fill the oil to the bottom of the fill hole. For vertical mounted units, fill the oil to the bottom of the fill hole; then add approximately 2 ounces above the fill hole. (See **Figure 15.**) for oil level locations.

Grease Recommendation

The Swivel Top Linear-Lift is fully greased at the factory. However, for maximum life, Chore-Time strongly recommends greasing the Swivel Top Linear-Lift Monthly.

Recommended Grease: Sunoco Construction Grease, Mobile CMP Grease, or similar water-resistant with molybdenum, extreme pressure (E.P.) grease. (See **Figure 15.**)

Important!! Apply grease to Threaded Rod across full length.

Important!! Grease every 30 days for maximum life.

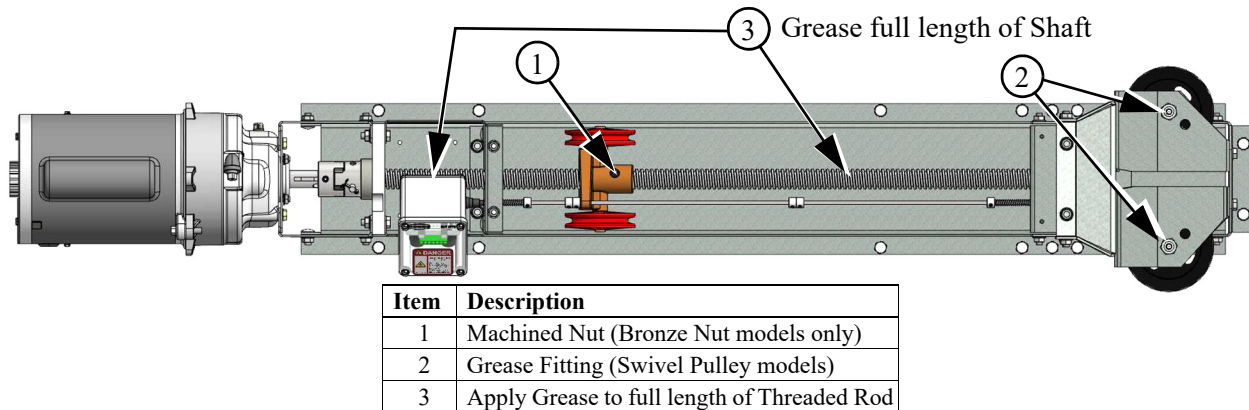


Figure 15. Swivel Top Linear-Lift™ Critical Grease Fitting Locations (horizontal wall mount view)

Swivel Top Linear-Lift™ Stop Switch Adjustment

The Swivel Top Linear-Lift™ has two adjustable stops (Set Collars) that may be moved to accommodate a variety of curtain opening sizes.

A 3/32" Allen wrench is required to loosen the set screw on the Set Collar (**Items 2 and 3, Figure 16**). Slide the Set Collar(s) on the Switch Rod to the desired limits of Inlet operation or Curtain travel.

Important! Do Not adjust the two Set Collars that are holding the Springs in place. Only adjust the four Collars **as shown**. The other Collars are set at the factory and do not require adjusting.

1. Move the Travel Adjustment Set Collars to the desired locations for desired travel and tighten the Set Screws (4 total) to 30 In/lbs. [3.39 Nm].

Tighten both Set Collar Set Screws to 30 In/lbs. [3.39 Nm].

Tighten both Set Collar Set Screws to 30 In/lbs. [3.39 Nm].

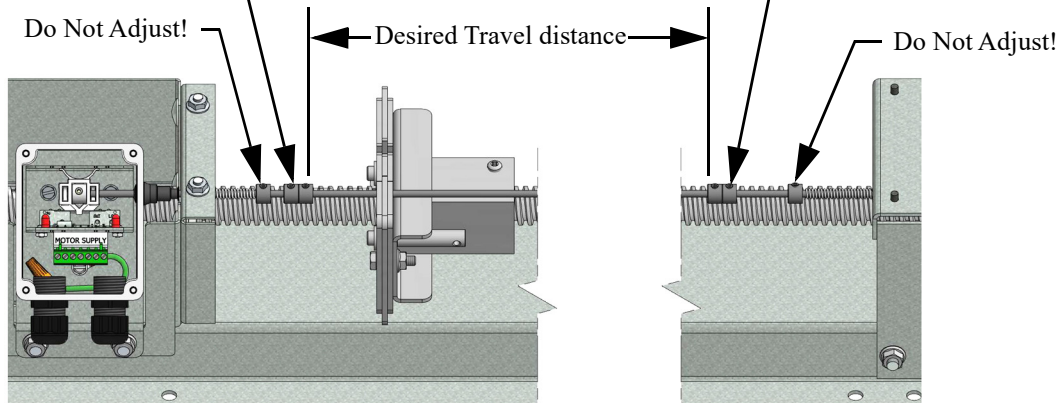


Figure 16. Stop Switch Adjustment

Potentiometer Installation

1. Remove the four 1/4-20 Nuts, and remove the existing Lower Cover (**Item 1**) and Upper Cover (**Item 2**) from the Linear Lift™ Assembly. The Lower Cover can be discarded.
2. Run the Linear Lift™ to move the Nut (**Item 3**) all the way to the motor end, with the outer and inner shut-off Set Collars together at the end of the operating range (See **Figure 17**).
3. If the Linear Lift™ has been connected to an inlet cable system, and is set to stop at the inner Set Collar somewhere else on the Switch Rod, disconnect the Linear Lift™ from the inlet system cable to allow the Set Collars to be located together. This will allow the Linear Lift™ to be fully synchronized with the Potentiometer Assembly.

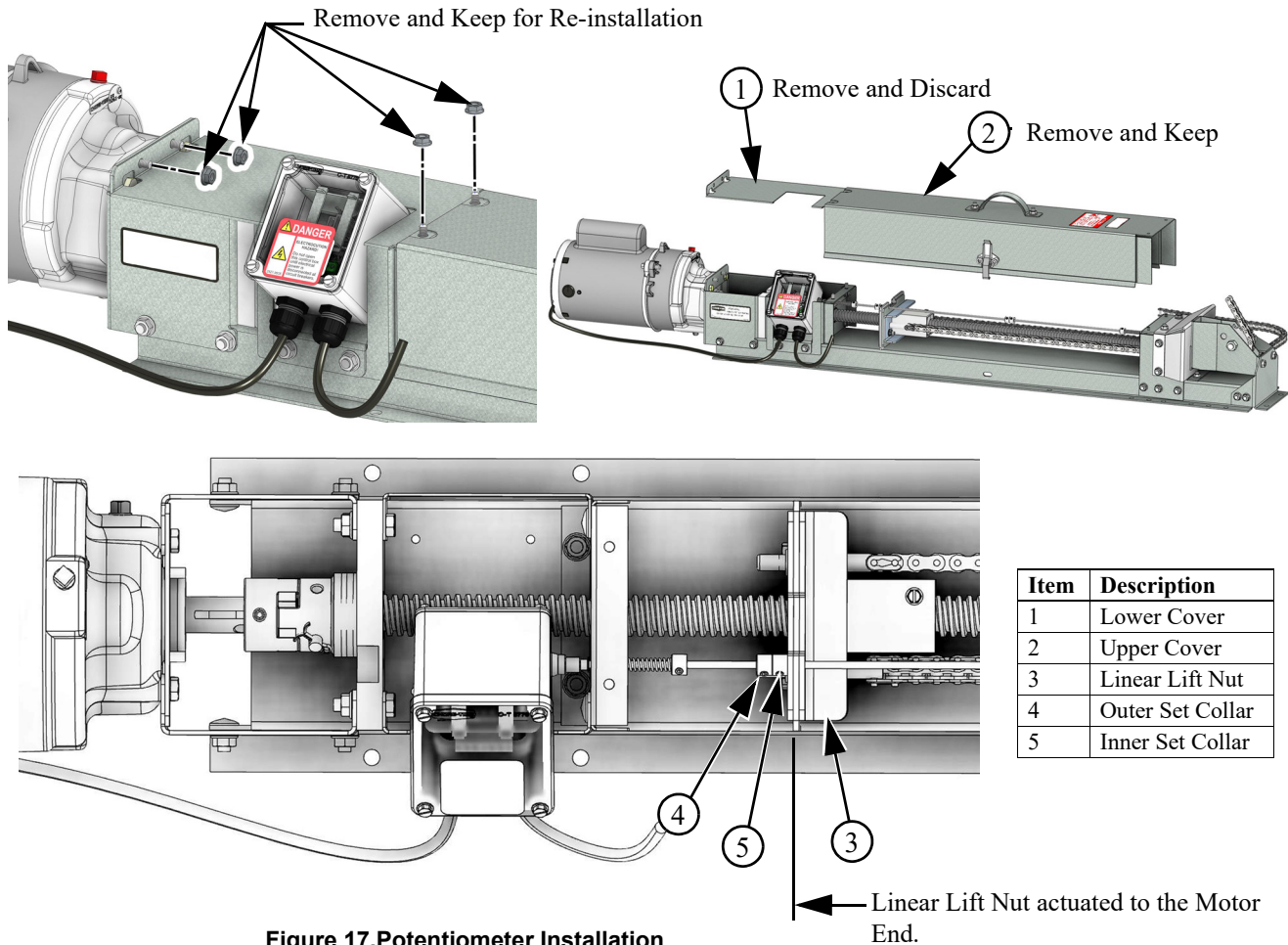
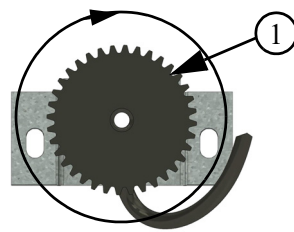


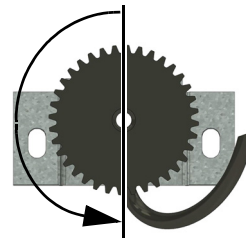
Figure 17. Potentiometer Installation

4. With the Potentiometer Assembly pointed down as shown in **Figure 18**, wind the Potentiometer Assembly Gear (**Item 1**) CLOCKWISE until it stops (See **Figure 18**).
5. Turn the gear COUNTER-CLOCKWISE for half a turn. The Potentiometer Assembly is now set for the full stroke range of the Linear Lift™.

Clockwise Until Stops



Counter-Clockwise 1/2 Turn



Item	Description
2	Potentiometer Assembly Gear

Figure 18. Potentiometer Adjustment

- 6.Loosen the Liquid Tight Connectors and Remove the Cord from the Switch Box and the Cover.
- 7.Intall a 1/4-20 x .50 Screw (**Item 2**) and 1/4-20 Locknut (**Item 3**) in the Thrust Bracket (**Item 1, Figure 20**).
- 8.Line up the two holes in the Potentiometer Assembly (**Item 5**) and Thrust Bracket with the two holes in the Base and insert two 1/4-20 x 5/8 Bolts (**Item 1**) *included in the parts package* (Do not Tighten them down yet).
- 9.Slide the Potentiometer Assembly toward the Shaft until the Gear teeth fully engage the Shaft Threads.
- 10.Tighten the Screws.

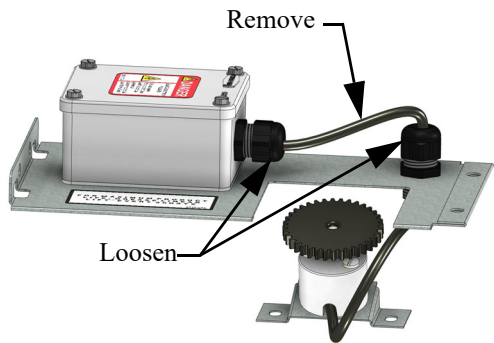
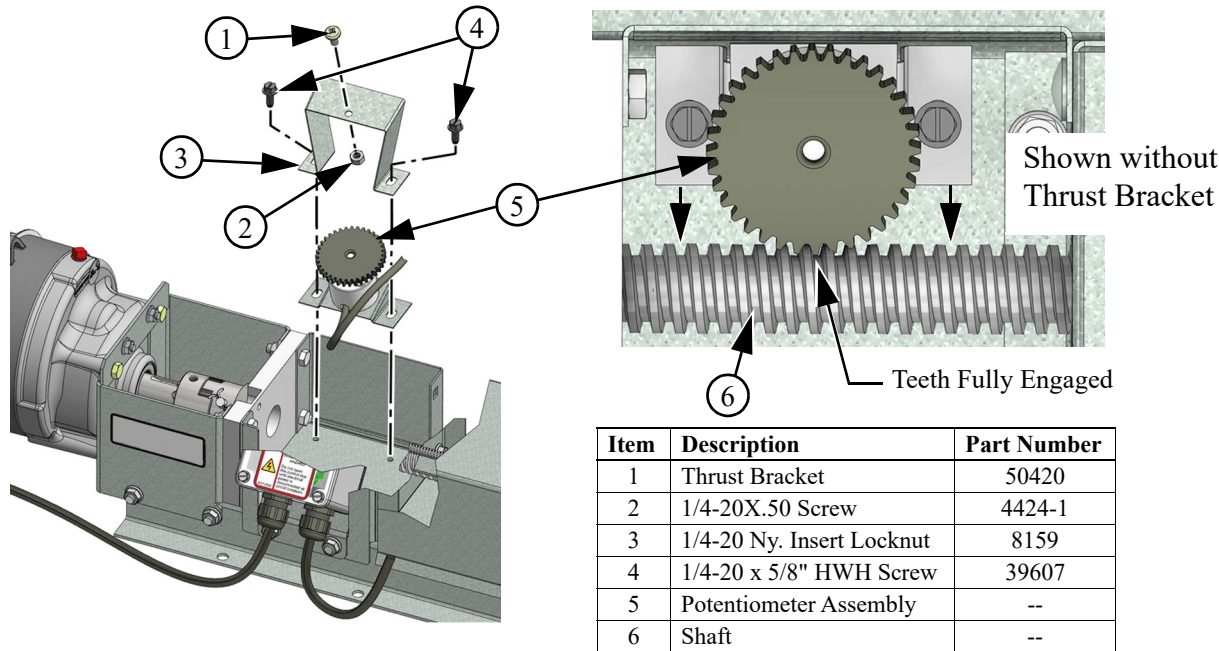


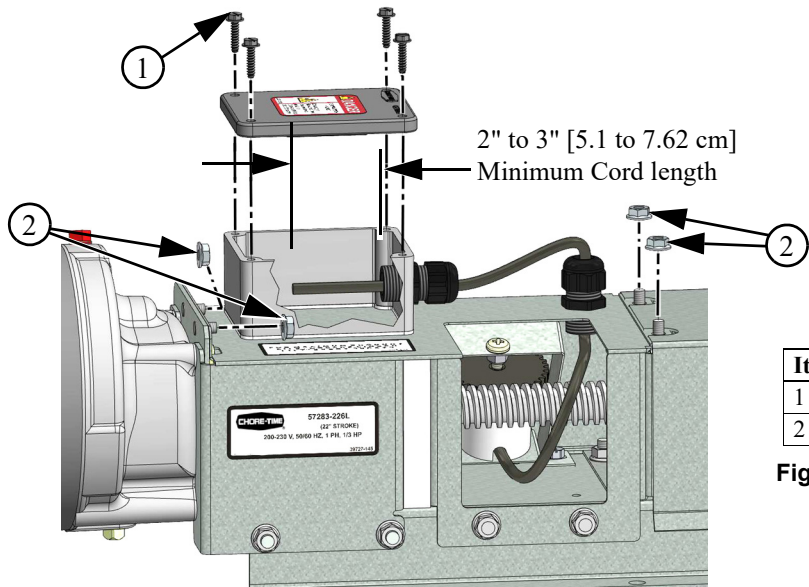
Figure 19.Fastening Potentiometer Assembly



Item	Description	Part Number
1	Thrust Bracket	50420
2	1/4-20X.50 Screw	4424-1
3	1/4-20 Ny. Insert Locknut	8159
4	1/4-20 x 5/8" HWH Screw	39607
5	Potentiometer Assembly	--
6	Shaft	--

Figure 20.Fastening Potentiometer Assembly

- 11.Feed the Cord around the Drive Rod and up through the Liquid Tight in the Lid and into the Plastic Switch Box **as shown**. There should be a Minimum of 2" to 3" [5.1 to 7.62 cm] of Cord in the Box for wiring later.
- 12.Fasten the Plastic Lid back onto the Plastic Connection Box with the screws removed earlier.
- 13.Fasten both Covers back on with the Nuts that were removed earlier.



Item	Description	Part Number
1	Screws removed earlier	39607
2	Nuts removed earlier	--

Figure 21.Routing Cord and Fastening Covers

Wiring

Potentiometer Wiring

The correct wiring of the Potentiometer leads for the Control signal depends on the mounting and application of the Linear-Lift™. **Figure 22** shows how the unit can be used either to close the attachment by retracting cable into the unit or by extending cable out of the unit. The proper lead connections are shown in **Figure 22**.

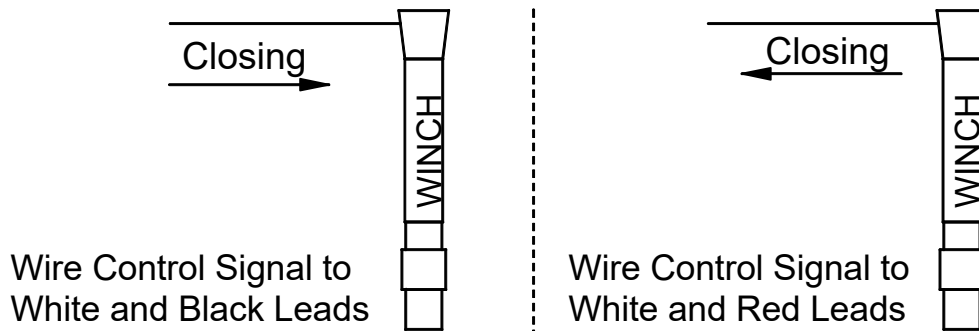


Figure 22. Potentiometer Wiring

Switch Wiring

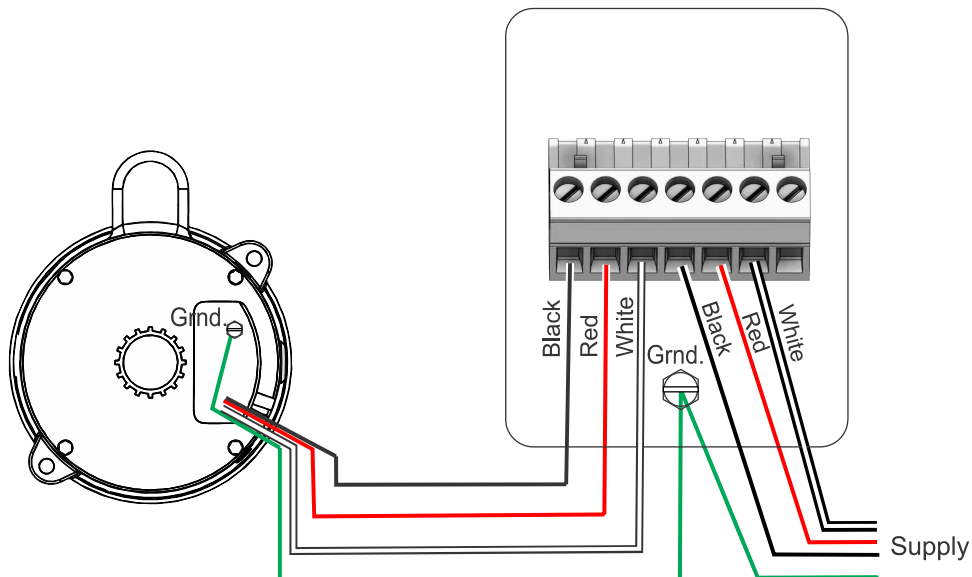


Figure 23. Switch Wiring Diagram

Wiring 2 (230V) Linear Lifts™ in Parallel (To Prevent Back-feed between Lifts)

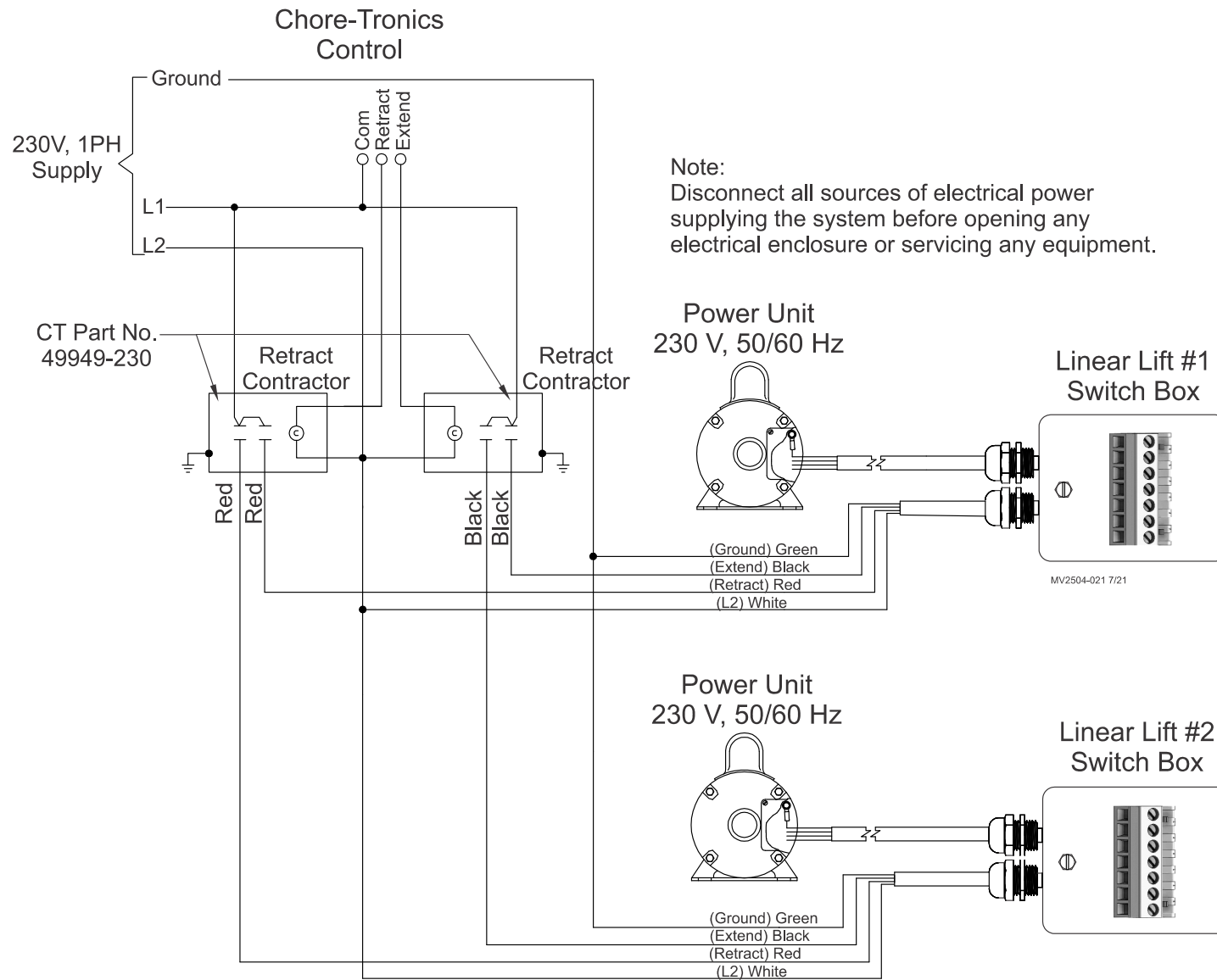


Figure 24. Wiring 2 (230V) Linear Lifts in Parallel

Wiring 2 (115V) Linear Lifts™ in Parallel (To Prevent Back-feed between Lifts)

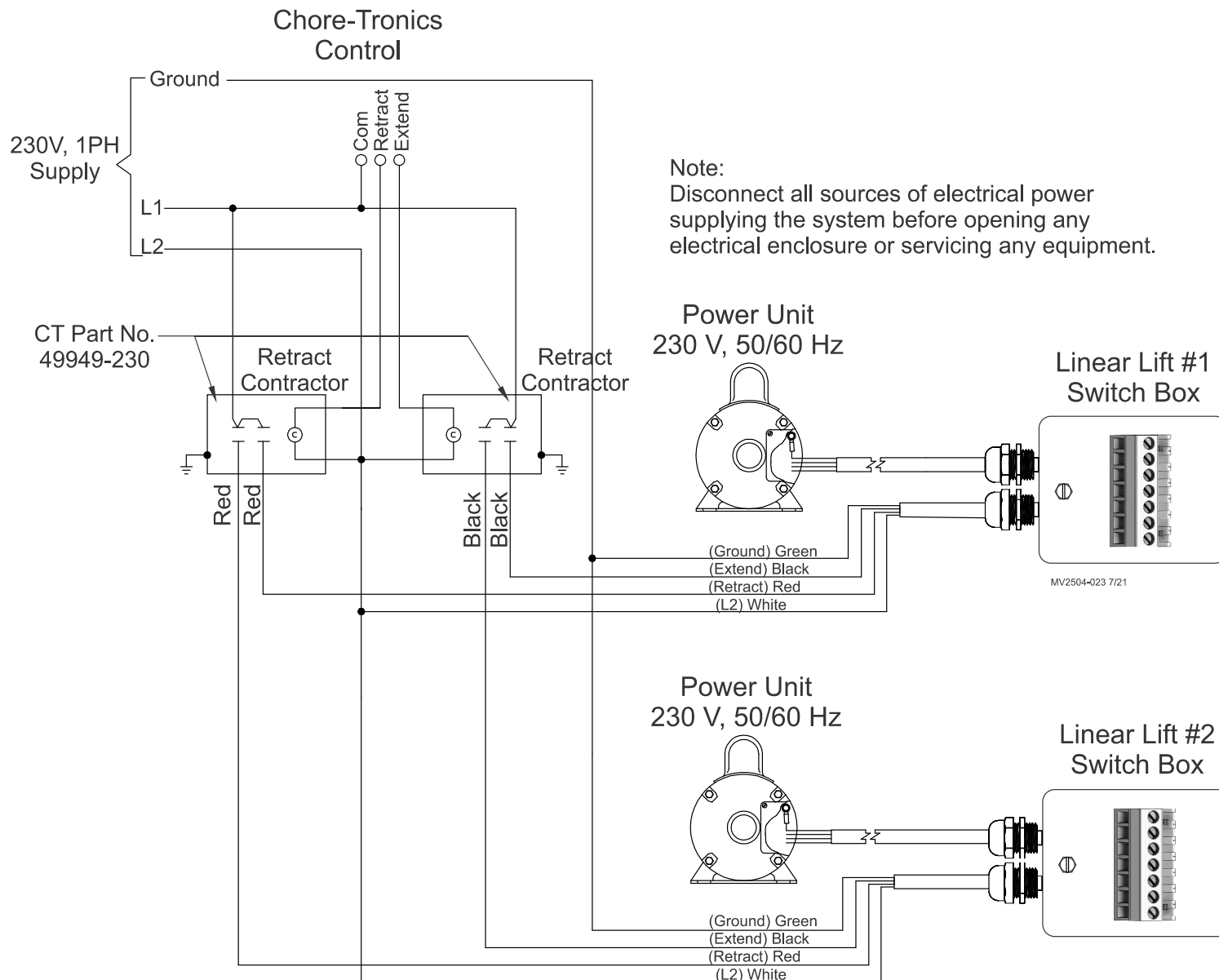


Figure 25. Wiring 2 (115V) Linear Lifts in Parallel

Operation

Potentiometer Connection and Operation

Figure 26 shows the schematic of the Potentiometer and which color lines are associated with rotation, direction, and position of the Linear Lift Nut.

1. Resistance across White & Red is maximum when fully extended.
2. Resistance across White and Black is maximum when fully retracted.
3. Potentiometer rotation is defined as the turning direction when viewed from the shaft side of the Potentiometer.
4. Chore-Tronics Controllers read increasing resistance=curtain closing.
5. Potentiometer is a 10-turn device that reads from 0 to 10 KOHM.

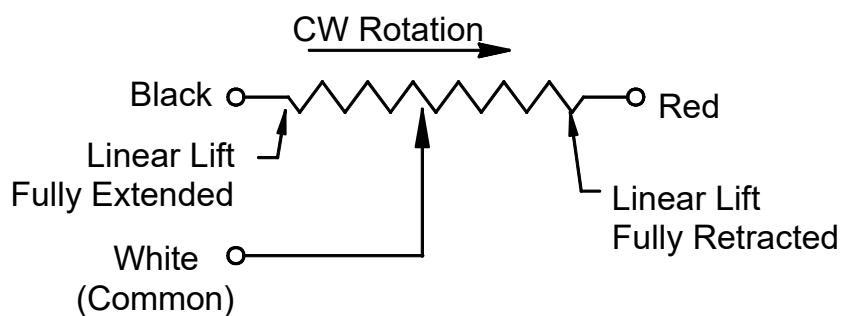
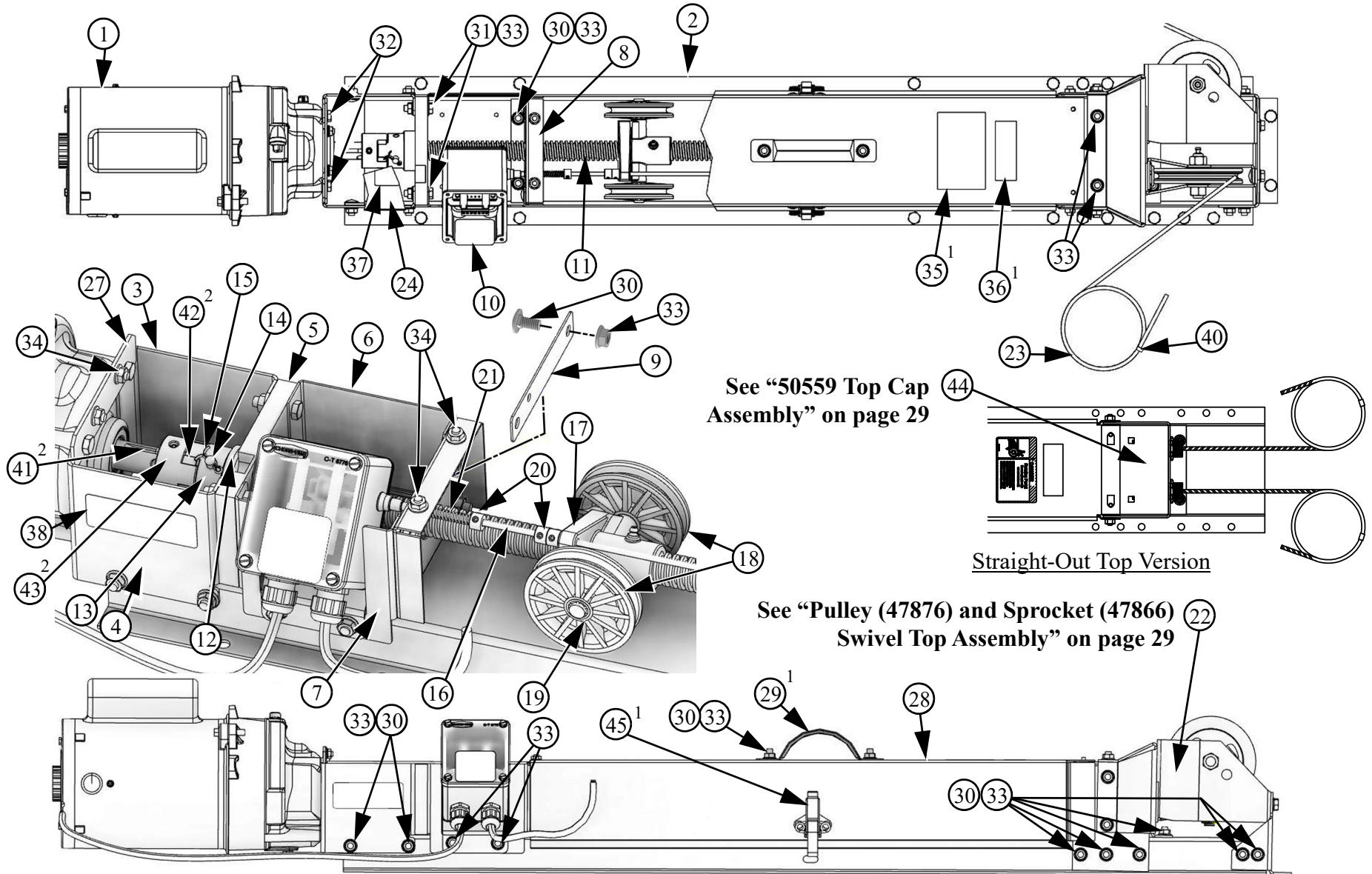


Figure 26.Potentiometer Connection and Operation

This Page left blank intentionally.....

Parts Listing

Linear Lift with Brass Nut and Cable: 57281-XXXO Swivel Top, 57281-XXXL Straight Out Top



Linear Lift with Brass Nut and Cable: 57281-XXX0 Swivel Top, 57281-XXXL Straight Out Top

Item	Description	Part No.
1**	115 Volt Power Unit (60RPM)	42780
	230 Volt Power Unit (60 RPM)	36370
	230 Volt Power Unit (30 RPM)	48821
2	Swivel Top Linear-Lift™ Base	
	22" Stroke	47836-26
	32" Stroke	47836-36
	44" Stroke	47836-48
	62" Stroke	47836-66
3	L.H. Linear-Lift™ Motor Bracket	47762-1
4	R.H. Linear-Lift™ Motor Bracket	47762-2
5	Linear-Lift™ Thrust Bracket	47763
6	L.H Linear-Lift™ Panel	47771-1
7	Linear Lift Switch Bracket	56133
8	Linear-Lift™ Swivel Partition	47772
9	Linear-Lift™ Partition Plate	57157
10*	Linear-Lift™ Switch	57284
11	1-5 Threaded Acme Shaft	
	22" Stroke	47856-26
	32" Stroke	47856-36
	44" Stroke	47856-48
	62" Stroke	47856-66
12	Industrial Thrust Bearing	36397
13	Flexible (Mach.) Coupling	35944
14	5/16 x 2 Clevis Pin	36466-1
15	.125 x .75 Cotter Pin	2663
16	Linear-Lift™ Switch Rod	
	22" Stroke	57210-1
	32" Stroke	57210-2
	44" Stroke	57210-3
	62" Stroke	57210-4
17	Machined Linear-Lift™ Nut	47759
18	Red Pulley Wheel	2503

Item	Description	Part No.
19	Retainer Ring	41525
20	Set Collar	41857
21	Compression Spring	56500
22***	Swivel Top Pulley Assembly	47876
23	25' Linear-Lift™ Cable	47658
24	Lower Linear-Lift™ Cover	56139
27	Linear-Lift™ Cover Bracket	47834
28 ¹	Linear-Lift™ Cover Assembly (Repair)	
	22" Stroke	56229-26
	32" Stroke	56229-36
	44" Stroke	56229-48
	62" Stroke	56229-66
29 ¹	Handle	3-12194
30	5/16-18 x .625 Carriage Bolt	8282
31	5/16 x 18 x 1.25 Bolt	2150
32	5/16 x 18 x .75 Bolt	2046
33	5/16-18 Hex Flange Nut	8490
34	1/4-20 Hex Serrated Flange Nut	46460
35 ¹	Danger (Rotating Parts) Decal	2527-10
36 ¹	Chore-Time Decal	2525-2
37	Grease Decal	2529-634
38	Linear-Lift™ Decal	39727-XXX
40	Cable Tie	6635
41 ²	3/16 x 1 Square Key	2112-1
42 ²	"SOX" Spider Spacer	36333
43 ²	Flexible Type L Coupling	36363-2
44****	Straight Out Top Cap Ass'y	50559
45 ¹	Over Center Clamp	2536

*See “Linear-Lift Switch Assembly (57284)” on page 31 for exploded view of parts.

**See “Power Unit Part Numbers” on page 33 For Motor Part numbers (exploded View of Power Unit).

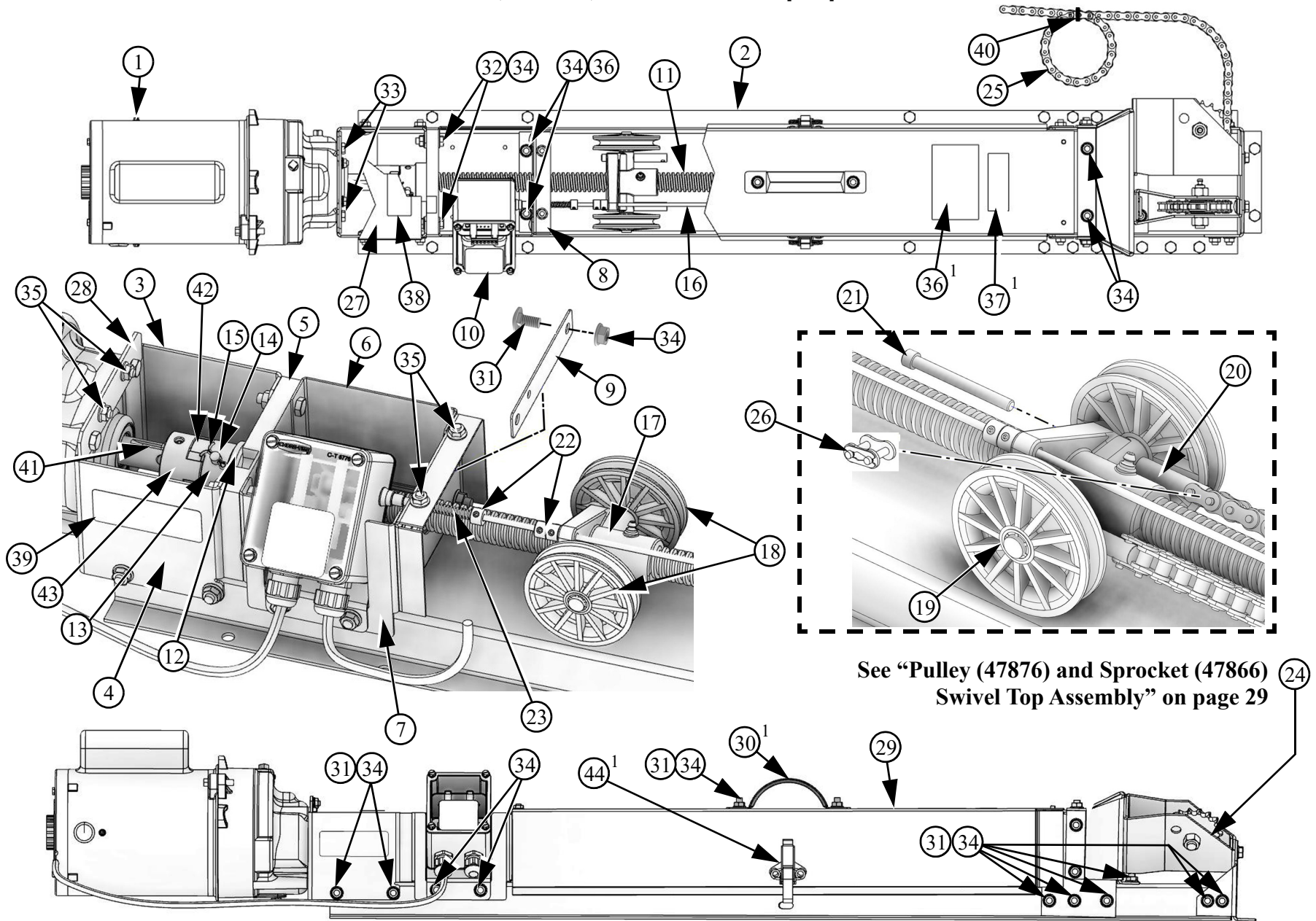
***See “Pulley (47876) and Sprocket (47866) Swivel Top Assembly” on page 29.

****See “50559 Top Cap Assembly” on page 29.

¹ 56229 Repair Cover includes Clamps, Handle, and decals.

² Included with The Power Unit Assembly (Item 1).

Linear Lift 57282-XXXX with Brass Nut, Chain, and Swivel Top Sprockets



Linear Lift 57282-XXXX with Brass Nut, Chain, and Swivel Top Sprockets

Item	Description	Part No.
1**	115 Volt Power Unit (60RPM)	42780
	230 Volt Power Unit (60 RPM)	36370
	230 Volt Power Unit (30 RPM)	48821
2	Swivel Top Linear-Lift™ Base	
	22" Stroke	47836-26
	32" Stroke	47836-36
	44" Stroke	47836-48
	62" Stroke	47836-66
3	L.H. Linear-Lift™ Motor Bracket	47762-1
4	R.H. Linear-Lift™ Motor Bracket	47762-2
5	Linear-Lift™ Thrust Bracket	47763
6	L.H Linear-Lift™ Panel	47771-1
7	Linear Lift Switch Bracket	56133
8	Linear-Lift™ Swivel Partition	47772
9	Linear-Lift™ Partition Plate	57157
10*	Linear-Lift™ Switch	57284
11	1-5 Threaded Acme Shaft	
	22" Stroke	47856-26
	32" Stroke	47856-36
	44" Stroke	47856-48
	62" Stroke	47856-66
12	Industrial Thrust Bearing	36397
13	Flexible (Mach.) Coupling	35944
14	5/16 x 2 Clevis Pin	36466-1
15	.125 x .75 Cotter Pin	2663
16	Linear-Lift™ Switch Rod	
	22" Stroke	51992-1
	32" Stroke	51992-2
	44" Stroke	51992-3
	62" Stroke	51992-4
17	Machined Linear-Lift™ Nut	47759
18	Red Pulley Wheel	2503
19	Retainer Ring	41525

Item	Description	Part No.
20	Chain Connecting Rod	44417
21	1/4-20 x 2-1/4 SH Cap Screw	5083-2
22	Set Collar	41857
23	Compression Spring	56500
24***	Swivel Top Sprocket Assembly	47866
25	Drive Chain	
	22" Stroke	21045-14
	32" Stroke	21045-15
	44" Stroke	21045-27
	62" Stroke	21045-39
26	Connecting Link (#40)	20017B
27	Lower Linear-Lift™ Cover	56139
28	Linear-Lift™ Cover Bracket	47834
29	Linear-Lift™ Cover Assembly (Repair)	
	22" Stroke	56229-26
	32" Stroke	56229-36
	44" Stroke	56229-48
	62" Stroke	56229-66
30 ¹	Handle	3-12194
31	5/16-18 x .625 Carriage Bolt	8282
32	5/16 x 18 x 1.25 Bolt	2150
33	5/16 x 18 x .75 Bolt	2046
34	5/16-18 Hex Flange Nut	8490
35	1/4-20 Hex Serrated Flange Nut	46460
36 ¹	Danger (Rotating Parts) Decal	2527-10
37 ¹	Chore-Time Decal	2525-2
38	Grease Decal	2529-634
39	Linear-Lift™ Decal	Varies
40	Cable Tie	6635
41 ²	3/16 x 1 Square Key	2112-1

Item	Description	Part No.
42 ²	"SOX" Spider Spacer	36333
43 ²	Flexible Type L Coupling	36363-2
44 ¹	Over Center Clamp	2536

*See "Linear-Lift Switch Assembly (57284)" on page 31. for exploded view of parts.

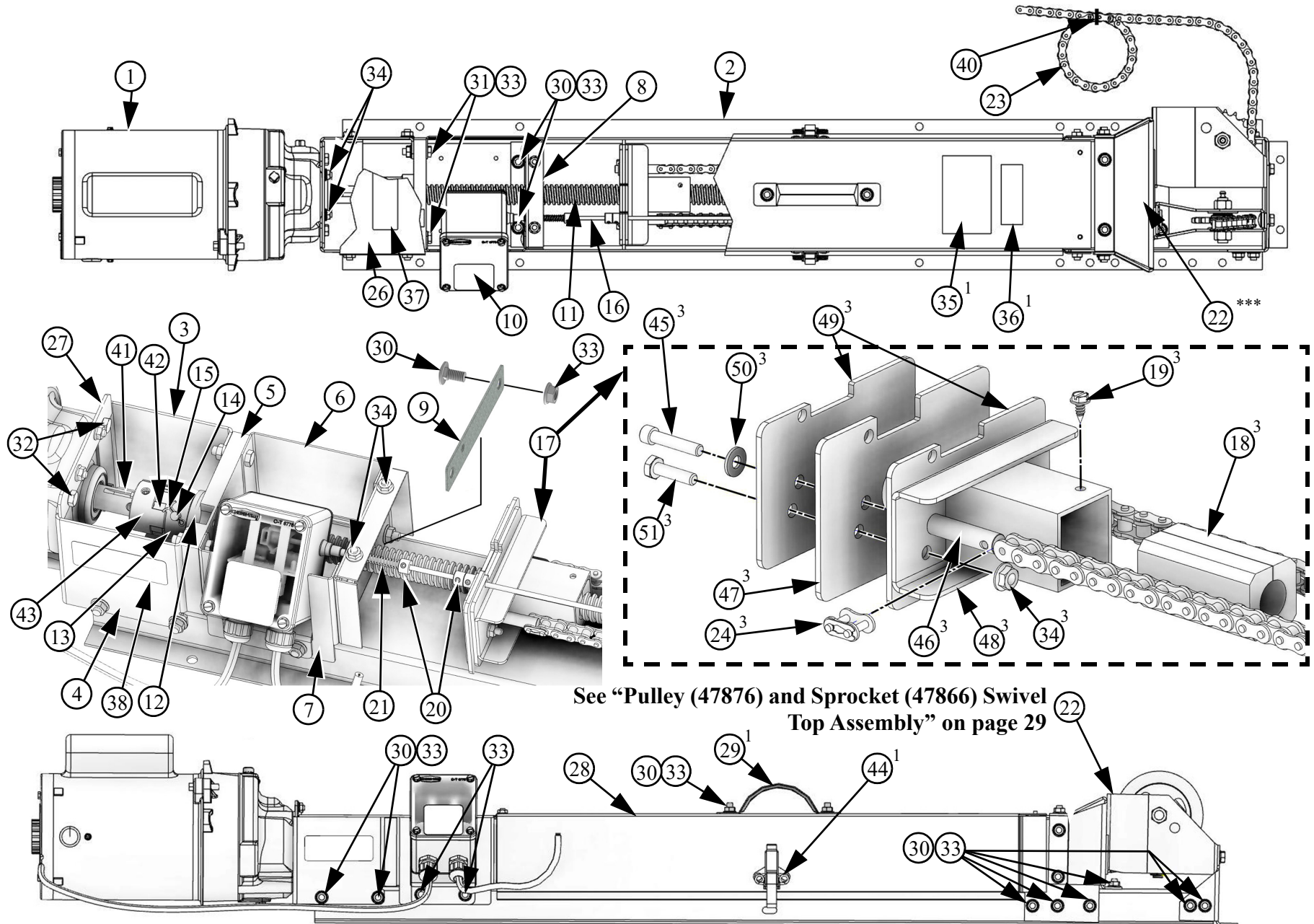
**See "Power Unit Part Numbers" on page 33. For Motor Part numbers (exploded View of Power Unit).

***See "Pulley (47876) and Sprocket (47866) Swivel Top Assembly" on page 29.

¹ 56229 Repair Cover includes Cover, Clamps, Handle, and decals.

² Included with The Power Unit Assembly (Item 1).

Linear-Lift with Plastic Nut: 57283-XXX0 Chain & Swivel Sprockets, 57283-XXXL Cable & Straight Out Top

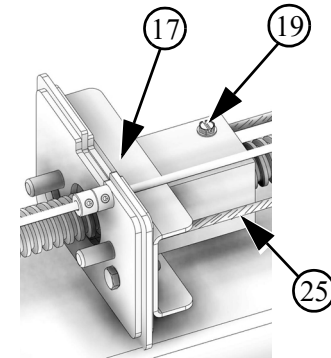


Linear-Lift with Plastic Nut: 57283-XXX0 Chain & Swivel Sprockets, 57283-XXXL Cable & Straight Out Top

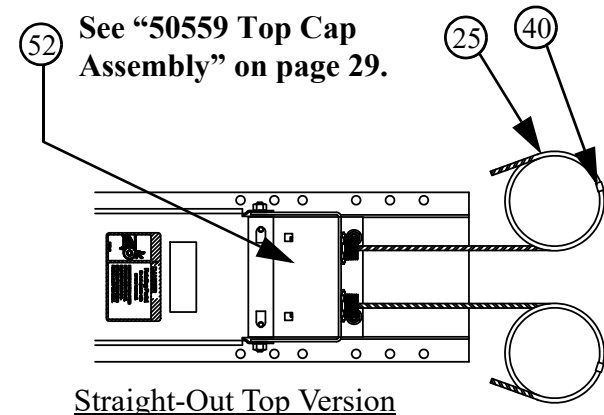
Item	Description	Part No.
1**	115 Volt Power Unit (60RPM) 230 Volt Power Unit (60 RPM) 230 Volt Power Unit (30 RPM)	42780 36370 48821
2	Swivel Top Linear-Lift™ Base 22" Stroke 32" Stroke 44" Stroke 62" Stroke 72" Stroke	47836-26 47836-36 47836-48 47836-66 47836-76
3	L.H. Linear-Lift™ Motor Bracket	47762-1
4	R.H. Linear Lift™ Motor Bracket	47762-2
5	Linear-Lift™ Thrust Bracket	47763
6	L.H Linear-Lift™ Panel	47771-1
7	Linear Lift Switch Bracket	56133
8	Linear-Lift™ Swivel Partition	47772
9	Linear-Lift™ Partition Plate	57157
10*	Linear-Lift™ Switch	57284
11	1-5 Threaded Acme Shaft 22" Stroke 32" Stroke 44" Stroke 62" Stroke 72" Stroke	47856-26 47856-36 47856-48 47856-66 47856-76
12	Industrial Thrust Bearing	36397
13	Flexible (Mach.) Coupling	35944
14	5/16 x 2 Clevis Pin	36466-1
15	.125 x .75 Cotter Pin	2663
16	Linear-Lift™ Switch Rod 22" Stroke 32" Stroke 44" Stroke 62" Stroke 72" Stroke	57210-1 57210-2 57210-3 57210-4 57210-5
17	LL Plastic Nut (Chain) LL Plastic Nut (Cable)	54269 54270
18 ³	LL Plastic Nut (For Repair)	53507
19	10-16 x 1/2 SS Screw	56112

Item	Description	Part No.
20	Set Collar	41857
21	Compression Spring	56500
22****	LL Swivel Sprocket Assembly LL Swivel Pulley Assembly	47866 47876
23	Drive Chain 22" Stroke 32" Stroke 44" Stroke 62" Stroke 72" Stroke	21045-14 21045-15 21045-27 21045-39 21045-21
24	Connecting Link (#40)	20017
25	Cable Assembly	47658
26	Lower Linear-Lift™ Cover	56139
27	Linear-Lift™ Cover Bracket	47834
28	Linear-Lift™ Cover Assembly (Repair) 22" Stroke 32" Stroke 44" Stroke 62" Stroke 72" Stroke	56229-26 56229-36 56229-48 56229-66 56229-76
29 ¹	Handle	3-12194
30	5/16-18 x .625 Carriage Bolt	8282
31	5/16 x 18 x 1.25 Bolt	2150
32	5/16 x 18 x .75 Bolt	2046
33	5/16-18 Hex Flange Nut	8490
34	1/4-20 Hex Serrated Flange Nut	46460
35 ¹	Danger (Rotating Parts) Decal	2527-10
36 ¹	Chore-Time Decal	2525-2
37	Grease Decal	2529-634
38	Linear-Lift™ Decal	Varies
40	Cable Tie	6635
41 ²	3/16 x 1 Square Key	2112-1
42 ²	"SOX" Spider Spacer	36333
43 ²	Flexible Type L Coupling	36363-2

Item	Description	Part No.
44 ¹	Over Center Clamp	2536
45 ³	1/4-20 x 2-1/4 SH Cap Screw	5083-11
46 ³	Chain Connecting Rod	44417
47 ³	Plastic Wear Nut Plate (For Repair)	53494
48 ³	Plastic Nut Weldment	53497
49 ³	Plastic Nut Plate	53495
50 ³	.281x.625x.066 Washer	1258
51 ³	1/4 x 20 x 1 Bolt	2029
52****	Straight Out Top Cap Assembly	50559



Plastic Nut (Cable Version)



Straight-Out Top Version

*See "Linear-Lift Switch Assembly (57284)" on page 31. for exploded view of parts.

**See "Power Unit Part Numbers" on page 33 For Motor Part numbers (exploded View of Power Unit).

***See "Pulley (47876) and Sprocket (47866) Swivel Top Assembly" on page 29.

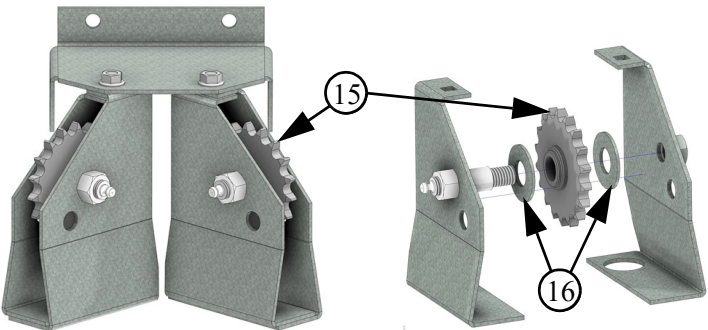
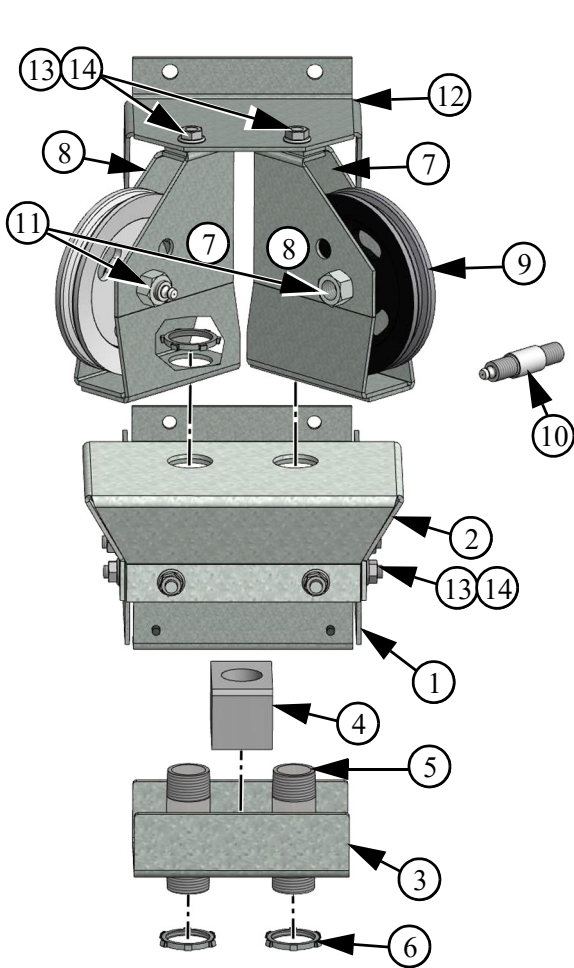
****See "50559 Top Cap Assembly" on page 29.

¹ 56229 Repair Cover includes Clamps, Handle, and decals.

² Included with The Power Unit Assembly (Item 1).

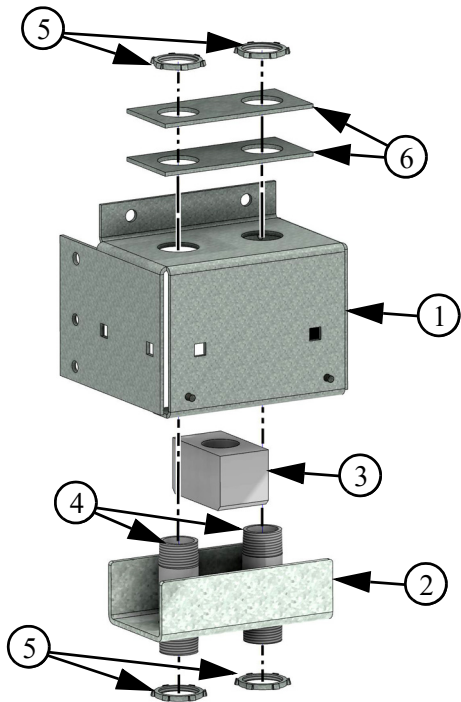
³ Included with Linear Lift Plastic Nut Assembly (54269 Chain), or (54270 Cable).

Pulley (47876) and Sprocket (47866) Swivel Top Assembly



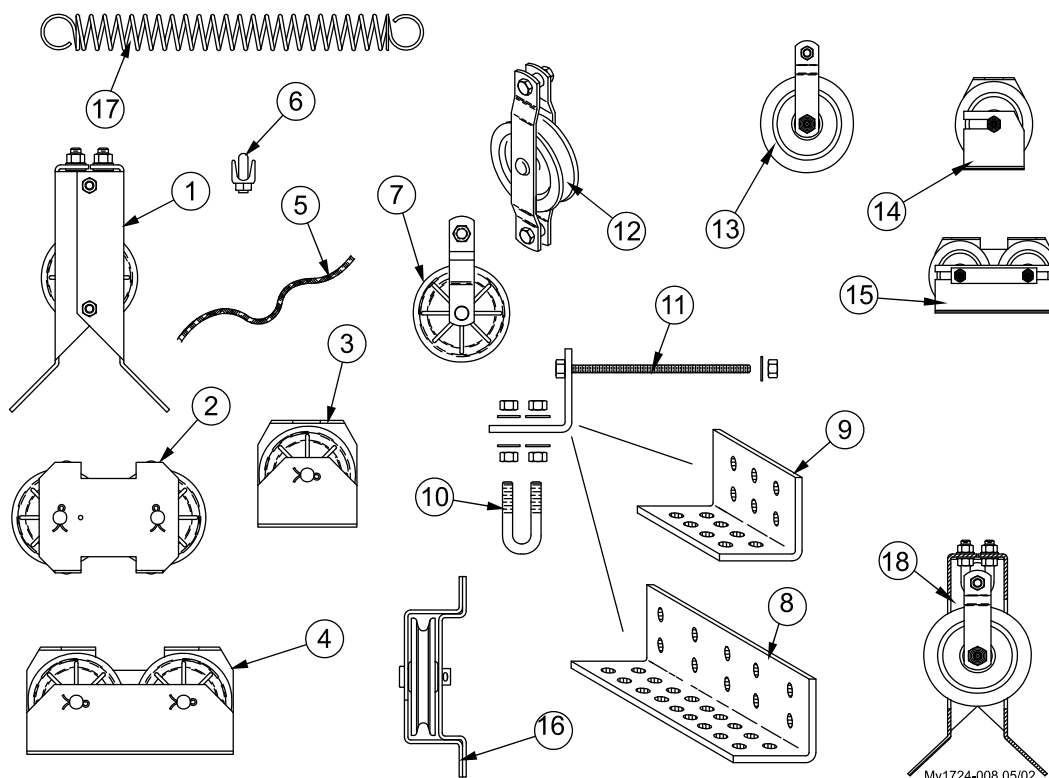
Item	Description	47876 Swivel Top (Pulley)	47866 Swivel Top (Sprocket)
		Part No.	
1	Linear-Lift™ End Box Bracket	47779	47779
2	Platform End Swivel Bracket	47780	47780
3	Linear-Lift™ Swivel Bracket	47783	47783
4	Linear-Lift™ Swivel Pilot	47789	47789
5	3/4 x 3.00 Pipe Nipple	47785	47785
6	Stamped .75 Lock Nut	47784	47784
7	Outer Swivel Top Pulley Bracket	47781	47781
8	Inner Swivel Top Pulley Bracket	47782	47782
9	4.5" Pulley Assembly	42498	--
10	4.5" Pulley Shaft Assembly	43112	43112
11	1/2" Lock Nut	8917	8917
12	Swivel Support Bracket	47839	47839
13	5-16 x 18 x .625 Car. Bolt	8282	8282
14	5-16 x 18 x .625 Ser. Flg. Nut	8490	8490
15	Sprocket	--	20079
16	.631 x 1.5 x .087 Washer	--	2955-11

50559 Top Cap Assembly



Item	Description	Part No.
1	Linear-Lift™ End Box Bracket	47779
2	Linear-Lift™ Swivel Bracket	47783
3	Linear-Lift™ Swivel Pilot	47789
4	3/4 x 3.00 Pipe Nipple	47785
5	3/4" Stamped Steel Lock Nut	47784
6	Top Cap Spacer	52546

Optional Pulleys and Accessories



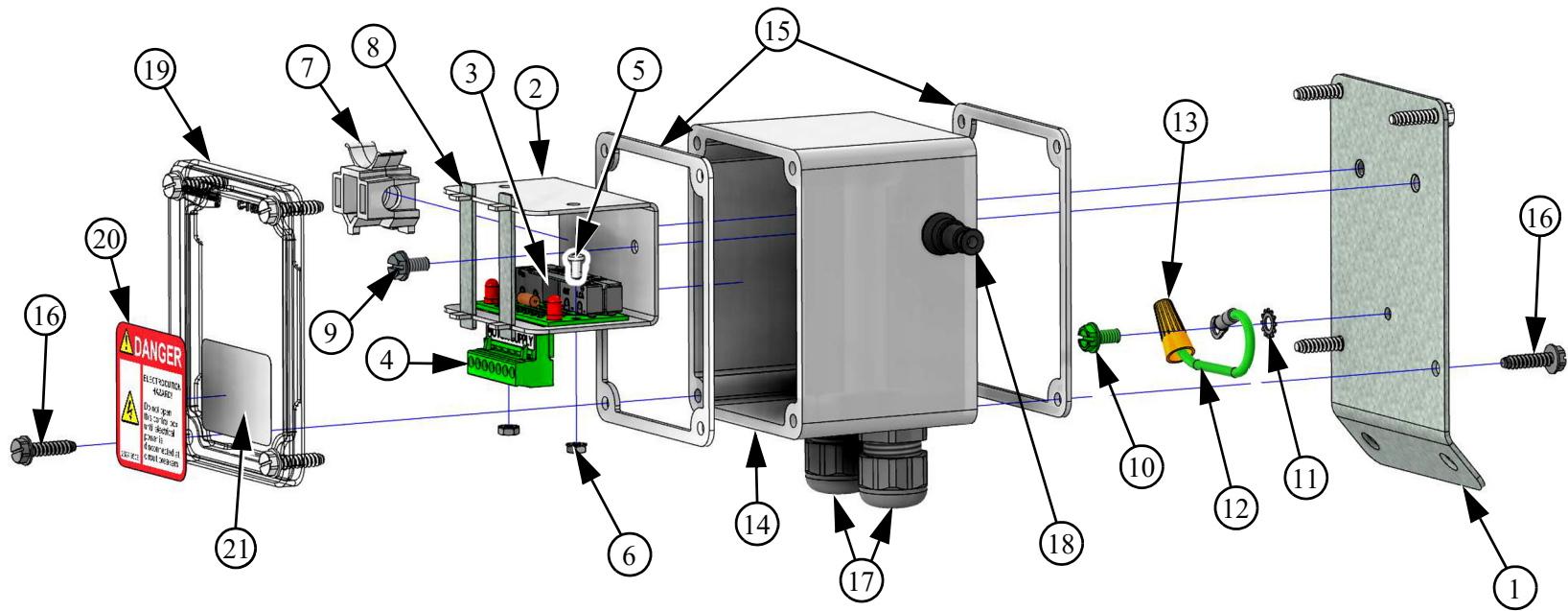
Mv1724-008 05/02

Item	Description	Part No.
1	3.5" Corner Pulley Assembly	35597
2	3.5" Double Pulley Assembly	27772
3	3.5" Pulley Kit	27301
4	3.5" Center Pulley Assembly	27302
5	3/16" Cable (150')—7 * 19 Weave	13976
6	3/16" Cable Clamp	732
7	3.5" Pulley Assembly	2500
8	Double Pulley Mounting Brkt.	35404
9	Single Pulley Mounting Brkt.	35405
10	3/8-16 x 2.5" U Bolt with Nuts	35602
11	5/16-18x7" Bolt	4412-20
12	3.5" Double Eye Pulley	2501
13	4.5" Steel Pulley Assembly	43005
14	4.5" Steel Single Pulley Assembly	43128
15	4.5" Steel Double Pulley Assembly	43129
16	3.5" Pulley Assembly	28429
17	Inlet Spring	47958
18	4.5" Steel Corner Pulley Assembly	43131

Items 7, 8, 10, & 11—may be ordered as a Double Pulley Bracket Kit. Part No. 35600.

Items 7, 9, 10, & 11—may be ordered as a Single Pulley Bracket Kit. Part No. 35598.

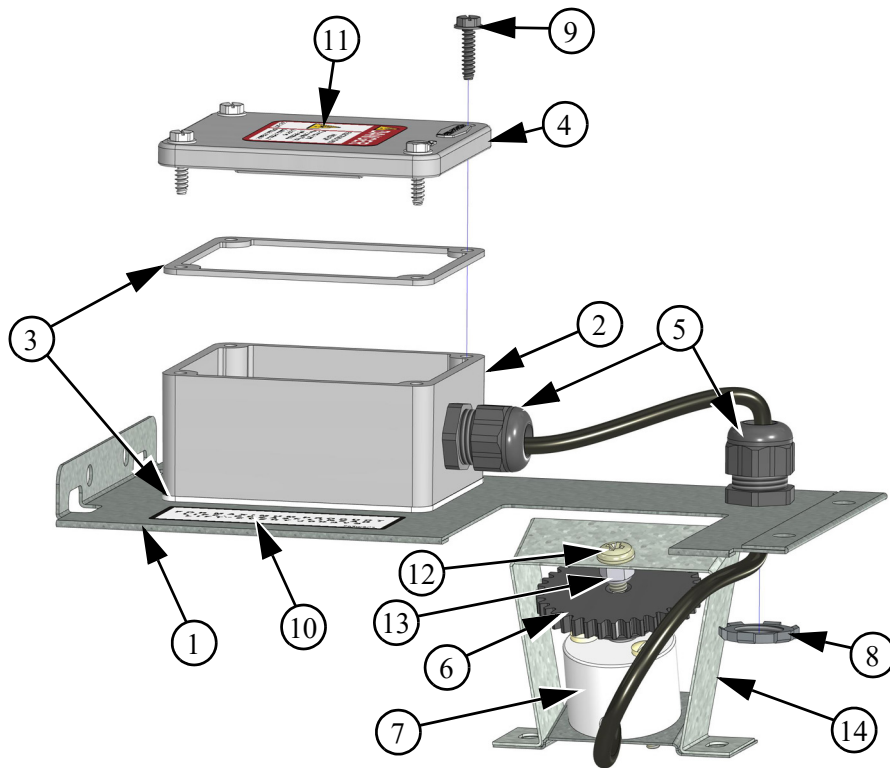
31 **Linear-Lift Switch Assembly (57284)**



Item	Description	Part No.
1	Linear Lift Switch Assembly Mount	56135
2	Linear Lift Switch Board Mount	56134
3	Linear Lift Switch Board	56136
4	7 POS Terminal Block Plug	56877
5	#4-40 x .25 Phil. Pan Head Screw	46987
6	4-40 Kepnut	49681
7	Linear Lift Switch Activator	56138
8	Linear Lift Switch Mount Brace	57067
9	10-24 x .375 HXWH Screw	25124
10	10-32 x 3/8 GR WSHR H SFTP Screw	34662
11	#10 Lockwasher	305

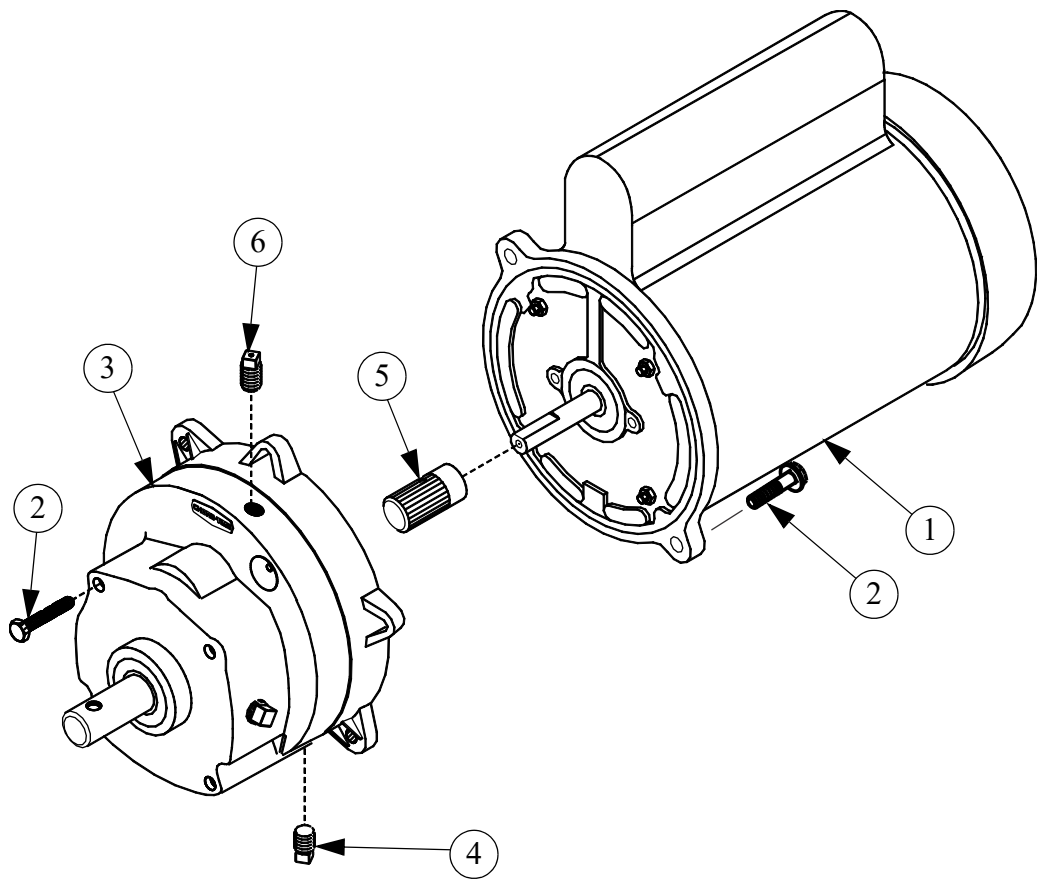
Item	Description	Part No.
12	Linear Lift Ground Wire	56875
13	Model 73B (Orange) Wire Connector	756-2
14	General Purpose Box (Machined)	56137
15	Switch Box Gasket	6777
16	#10 x .75 C Twin Helix Screw	6980
17	1/2 NPT .17-.45 Nylon CordGrip	23779
18	Flexible Seal Boot	56244
19	Clear Switch Box Cover	6776C
20	CE Danger Decal	2527-35CE
21	Linear Lift Switch Terminal Decal	2526-565

Linear Lift Cover Assembly with Potentiometer (57208)

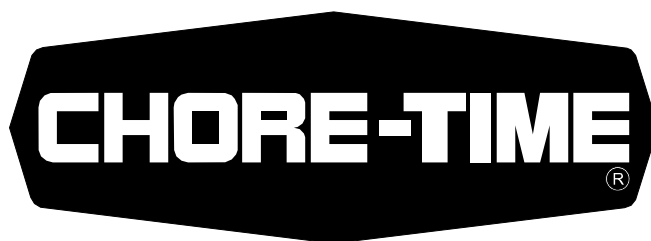


Item	Description	Part No.
1	Lower Potentiometer Cover	56139-1
2	General Purpose Box	57209
3	Switch Box Gasket	6777
4	Switch Box Cover	6776
5	1/2" Nylon Cord Grip	23779
6	16P 36 Tooth Potentiometer Gear	41825
7	Potentiometer Assembly	50482
8	.50 Conduit Lock Nut	3357
9	#10 x .75 Twin Helix Screw	6980
10	Grease Decal	2529-634
11	Danger Decal	2527-35CE
12*	1/4-20 x .50 Screw	4424-1
13*	1/4-20 Lock Nut	8159
14*	Potentiometer Thrust Bracket	50420
*Included in 50421 Potentiometer Thrust Bracket Kit		

Power Unit Part Numbers



Item	Description	42780 Part No.	36370 Part No.	48821 Part No.
1	Motor, 1 Ph, 115V 60Hz, 1/3HP, 1625 RPM	42778		
	Motor, 1Ph, 230V, 50/60Hz, 1/3HP, 1625/1425 RPM		36375	
	Motor, 1 Ph, 200-230V, 60Hz, 1/6 HP, 840 RPM			48820
2	5/16-18x5/8 Hex HD Screw	38163	38163	38163
3	Gearhead	3261-15	3261-15	3261-15
4	Pipe Plug (magnetic)	30160	30160	30160
5	Pinion Assembly	3249	3249	3249
6	Pipe Plug (Red Poly)	3516	3516	3516



**MADE TO WORK.
BUILT TO LAST.®**

Revisions to this Manual

Page No.	Description of Change	ECO
	New Manual	35698

**For additional parts and information, contact your nearest Chore-Time distributor or representative.
Find your nearest distributor at: www.choretime.com/contacts**

CTB, Inc.
PO Box 2000
Milford, Indiana 46542-2000 USA
Phone (574) 658-4101 Fax (877) 730-8825
Email: choretime@choretime.com
Internet: www.choretime.com