

CHORE-TIME®

Motor Mount Installation Kit: Part No. 28136 for updating Part No. 8300 Fans

! IMPORTANT !

**DISCONNECT ELECTRICAL SUPPLY
PRIOR TO BEGINNING INSTALLATION.
THE FANS MAY START AUTOMATICALLY
CAUSING SERIOUS INJURY OR DAMAGE
TO EQUIPMENT.**

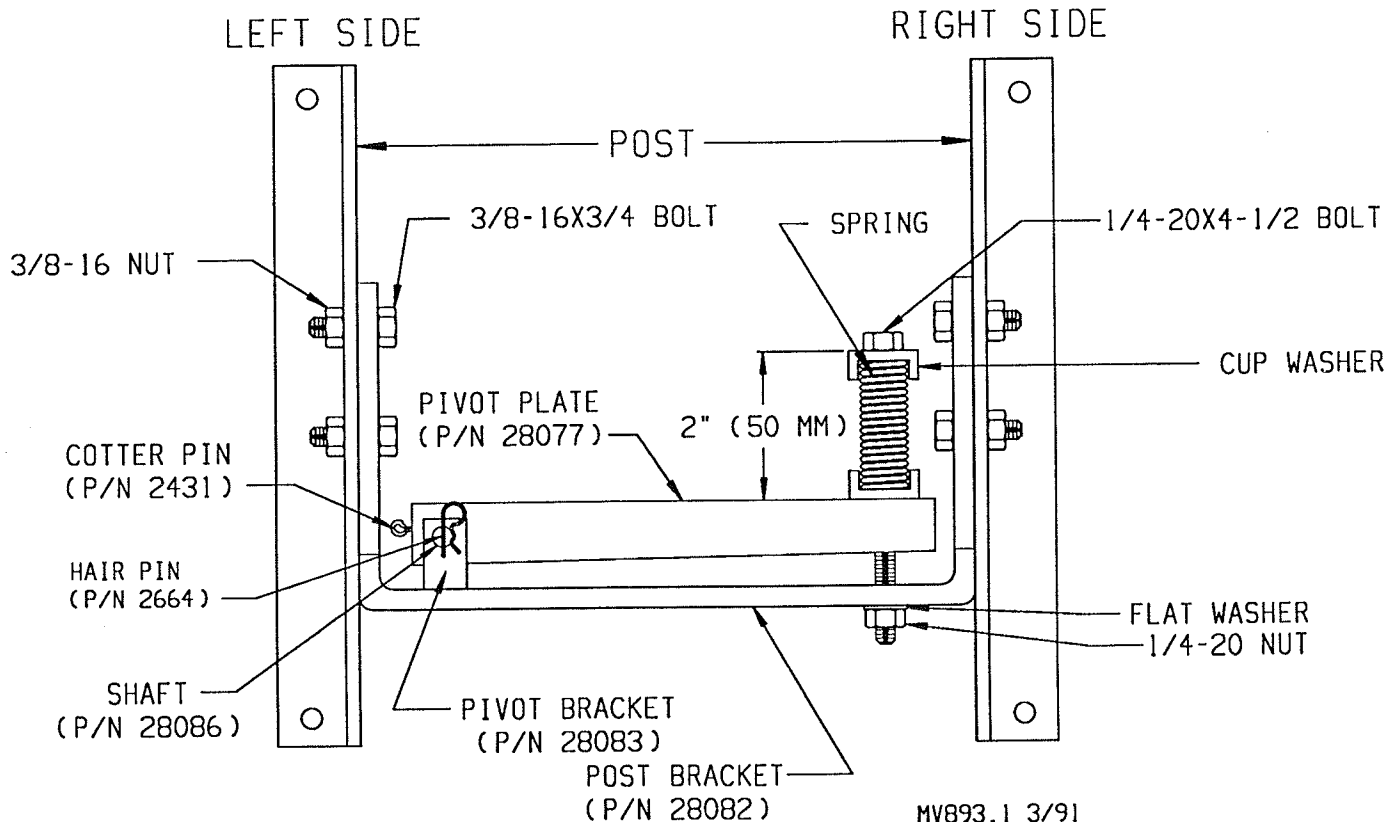
The provided 8300 Fan Motor Mount parts are to replace the existing single spring motor mount.

Disconnect electricity prior to beginning the installation.

1. Remove the belt, spring, cup washers, 1/4-20x4-1/2" bolt, 1/4-20 locknut, 1/4" flatwasher, and motor from the existing motor mount assembly. Save all the hardware.
2. Remove the four 3/8-16x3/4" bolts securing the existing Post Bracket Assembly.

NOTE: If replacing Post Bracket utilizing double springs (part no. 25312), two posts (p/n 8231) are required, and must be ordered separately.

3. Install the new assembled Post Bracket to the post, using the existing 3/8-16x3/4" bolts and nuts.
4. Install the motor to the far right on the pivot plate for appropriate belt length adjustment. Fasten with the (4) 5/16-18x5/8" bolt, flat washer, and nut removed in step 1.
5. Reinstall the cup washers, 1/4-20x4-1/2" bolt, and spring, then loosely secure with flat washer and locknut.
6. Reinstall the existing belt over both pulleys, then adjust spring height to 2" (50 mm), as shown in the figure below.
7. Reconnect electricity to the fan motor.

CHORE-TIME®

MV893A-391

Contact your nearby Chore-Time distributor or representative for additional parts and information.

Chore-Time Equipment, A Division of CTB, Inc.
P.O. Box 2000, Milford, Indiana 46542-2000 U.S.A.

Printed in the U.S.A.