

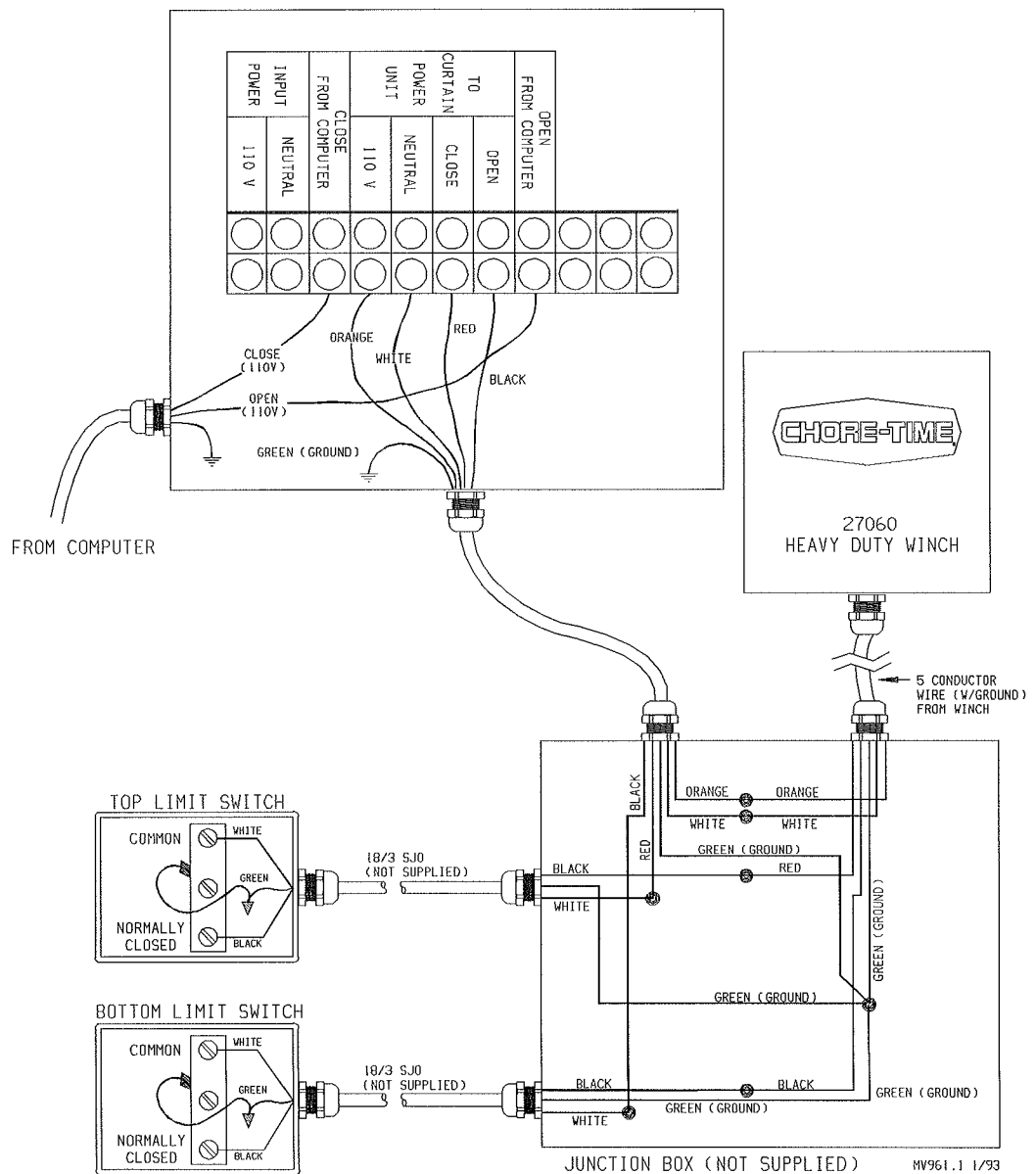
Chore-Time Ventilation System

29028 Auto-Manual Control Installation Instruction

The Auto-Manual Control, Part No. 29028, is designed to be used in conjunction with any type of automatic control which has two outputs, such as open and close, that might be used to control a power unit (i.e. 27060 Heavy Duty Winch).

The Auto-Manual Control is designed to allow the operator to choose between automatic and manual operation, simply by setting the toggle switches.

With the toggle switch in the MANUAL position, the OPEN and CLOSE toggle switch will determine the direction of power unit rotation.

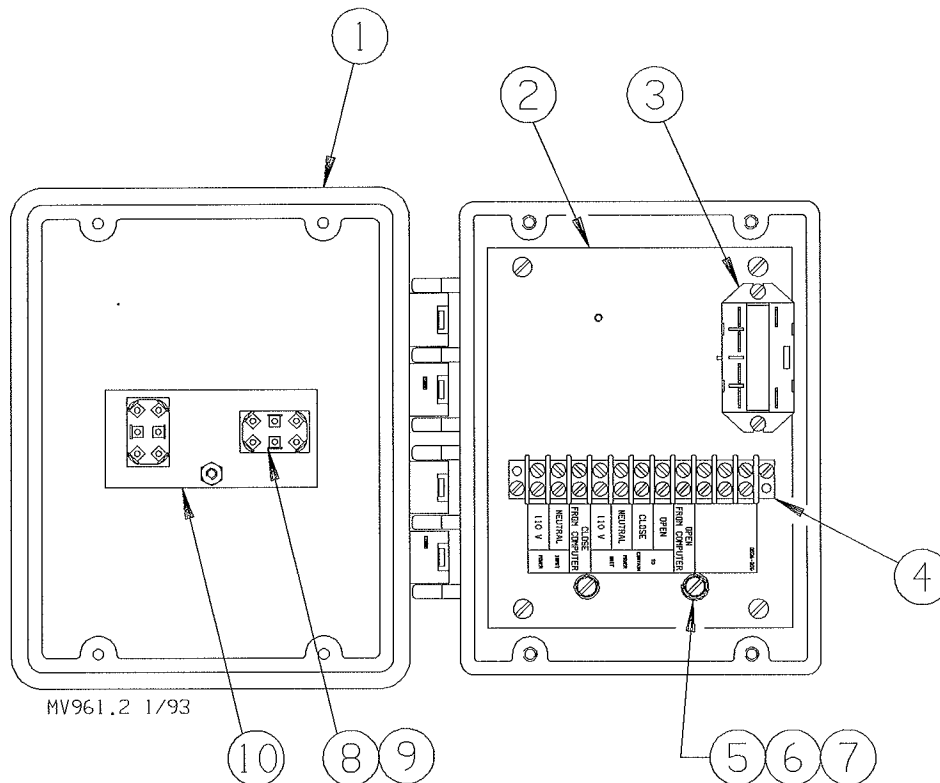


CHORE-TIME

®

29028 Auto-Manual Control

<u>Item</u>	<u>Description</u>	<u>Part No</u>
1	Box (Machined)	29975
2	Component Plate	28875
3	Power Relay	27051
4	Terminal Block	7347
5	Ground Screw	4968
6	Cup Washer	5775
7	#10 Ext. Lockwasher	305
8	Toggle Switch (DPDT)	20135
9	Switch Boot	1739
10	Grounding Plate	29993



Contact your nearby Chore-Time distributor or representative for additional parts and information.
Chore-Time Equipment, A Division of CTB, Inc.
P.O. Box 2000, Milford, Indiana 46542-2000 U.S.A.

Printed in the U.S.A.