

Installation Instructions for the Chore-Time Limit Switch: Part No. 29820-2

Limit Switch Introduction:

The Limit Switch Assembly may be used with a variety of types of equipment (i.e. curtains, baffle boards, feeder lines, inlets, etc.) to set the travel limits in either direction. For clarity, this instruction will refer specifically to curtain applications. However, installation and cable hook-up will be the similar for other types of equipment.

The cable from the Limit Switch is attached to the main curtain cable. As the curtain is closed or opened, the weight inside the enclosed tube is raised or lowered. The switches mounted on the PVC tube sense the metal weight and activate relays which control the power to the winch.

Limit Switch Installation:

Locate the Limit Switch Assembly as near to the Winch as possible and out of the reach of the livestock.

The Limit Switch Assembly must be mounted vertically so that the weight freely slides inside the tube.

Use (4) 3" screws, supplied, to secure the Limit Switch Assembly to the wall. The pulley on top of the assembly can be swiveled to align with the incoming cable.

Route the cable so that the weight is raised when the curtain closes, and is lowered when the curtain opens.

Use the cable clamp, supplied, to attach the cable from the Limit Switch to the main curtain cable, as shown in Figure 2. Twenty feet (6 m) of cable is supplied with the Limit Switch.

The switches can be slid up or down on the tube to adjust the upper and lower limits of curtain

travel. A small red light on the switch will glow when the switch is sensing the metal weight. See Figure 3.

The distance between the switches should be $1/2$ the curtain travel, plus 12" (31 cm). See Figure 2.

Example: For an installation that requires 5' (152 cm) of curtain travel, the following formula would apply. Half the total required curtain travel = 2'6" (76 cm) + 12" (31 cm) for the length of the weight = 42" (107 cm). The distance between the upper and lower limit switches should be approximately 42" (107 cm).

Limit Switch Wiring:

Refer to the appropriate control manual for wiring diagrams.

The switches require a continuous 115V or 230V power supply for operation. For 115 V. applications: connect the power supply across the black and white leads. For 230 V. applications: connect the power supply across the black and red leads.

If necessary, trim the flexible conduit to the required length. Use PVC glue to fasten the $1/2$ " conduit fitting to the flexible conduit.

All unused wires must be capped with separate wire nuts.

The cord between the switches and the white electrical box can not be shortened. The components inside the white box are sealed.

Ample cord is available to adjust the switches to any position on the tube. The excess cord should be coiled and hung from the cord clip, supplied.

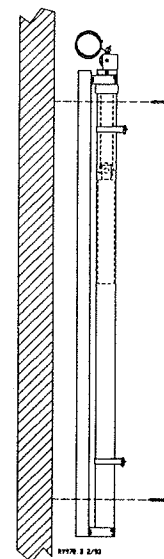


Figure 1.

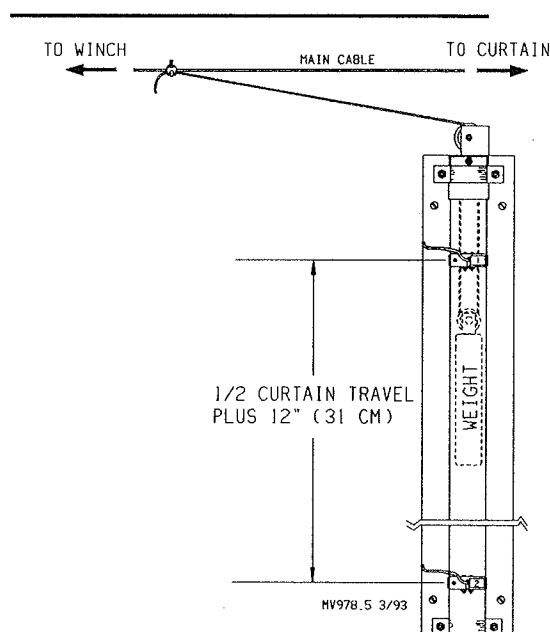


Figure 2.

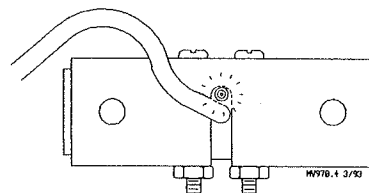


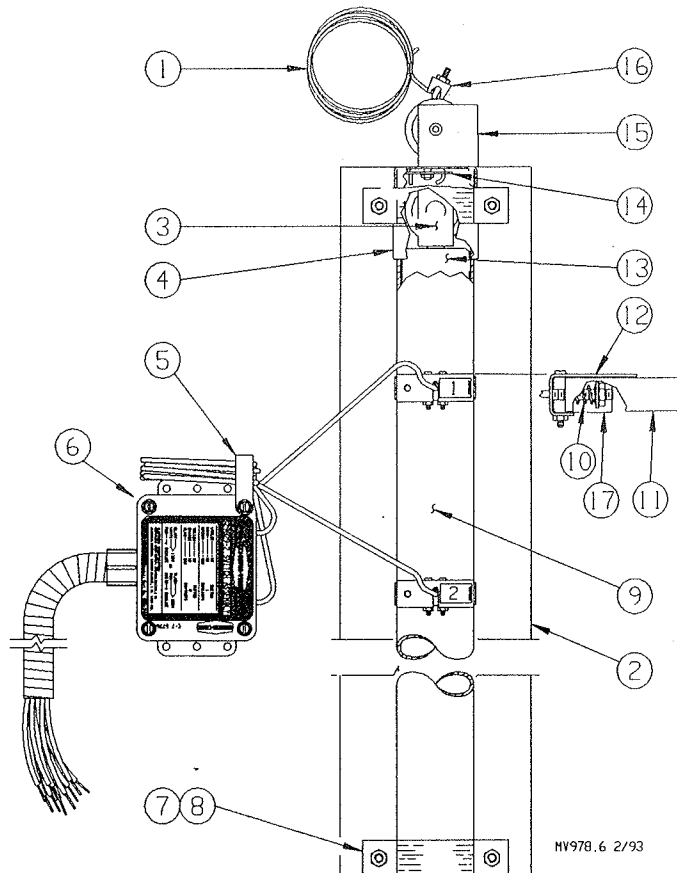
Figure 3.



Contact your nearby Chore-Time distributor or representative for additional parts and information.
Chore-Time Equipment, A Division of CTB, Inc.
P.O. Box 2000, Milford, Indiana 46542-2000 U.S.A. Printed in the U.S.A.

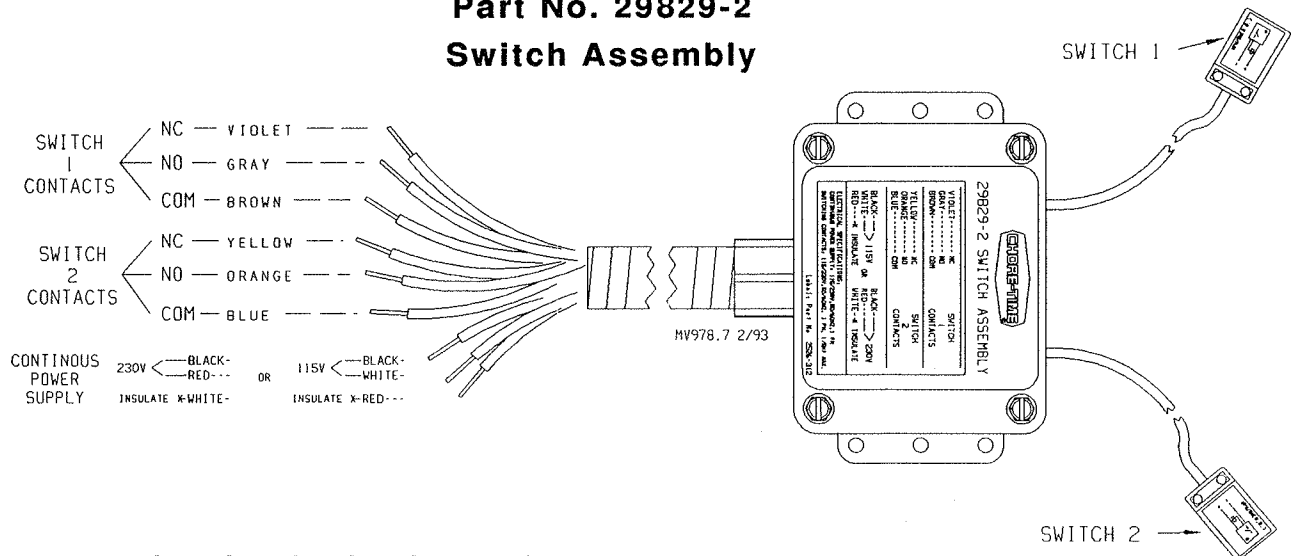
MV978A2-493

Part No. 29820-2 Curtain Limit Switch Assembly



Item	Description	Part No.
1	3/32-7x19 SS Cable	28377
2	Support Plank	29826
3	Inner Pulley Assembly	29824
4	1" Tube Spacer	30131
5	Cord Clip	21233
6	Switch Assembly	29829-2
7	Pipe Clamp Bracket	29830
8	Pipe Clamp Strap	29831
9	2" PVC Tube	29827
10	Spring	7132
11	Switch Strap	29823-2
12	Switch Mount	29828
13	Weight	29825
14	Cable Clamp Plate	29822
15	Outer Pulley Assembly	29821
16	Cable Clamp	14898
17	Switch (Replacement)	30110
--	1/2" PVC Conduit Fitting	7830

Part No. 29829-2 Switch Assembly



ELECTRICAL SPECIFICATIONS:

- Continuous Power Supply: 115/230V. 50/60 Hz. 1 PH.
- Switching Contacts: 115/230V. 50/60 Hz. 1 PH. 1/8 HP Max.

Contact your nearby Chore-Time distributor or representative for additional parts and information.

Chore-Time Equipment, A Division of CTB, Inc.
P.O. Box 2000, Milford, Indiana 46542-2000 U.S.A.

Printed in the U.S.A.