



Flushable Filter Control Panels

The Flushable Filter Control Panel is used to remove foreign material from the incoming water, and, if necessary, add medication to the water. This Control Panel features a filter that may be removed, cleaned, then reinstalled.

Two versions of the Filter Control Panel are available.

The low pressure version is designed to accommodate gravity flow systems with 5 - 10 psi (34.48 - 68.95 kPa). Do not exceed 15 psi (103.43 kPa) with this Control Panel, or damage will occur to the gauges.

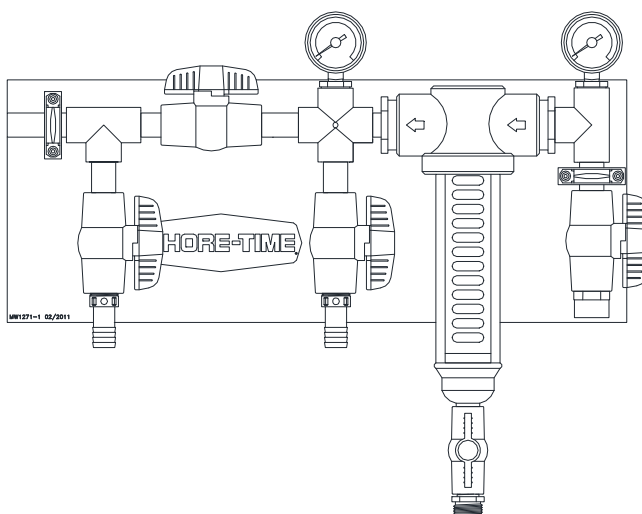
Systems with 11+ psi (75.85 kPa) should use the high pressure Control Panel and a Step Down Regulator (order separately).

The Filter Control Panel should be installed in a convenient location where incoming and outgoing water supply lines can be easily run. The control panel must be out of the reach of birds.

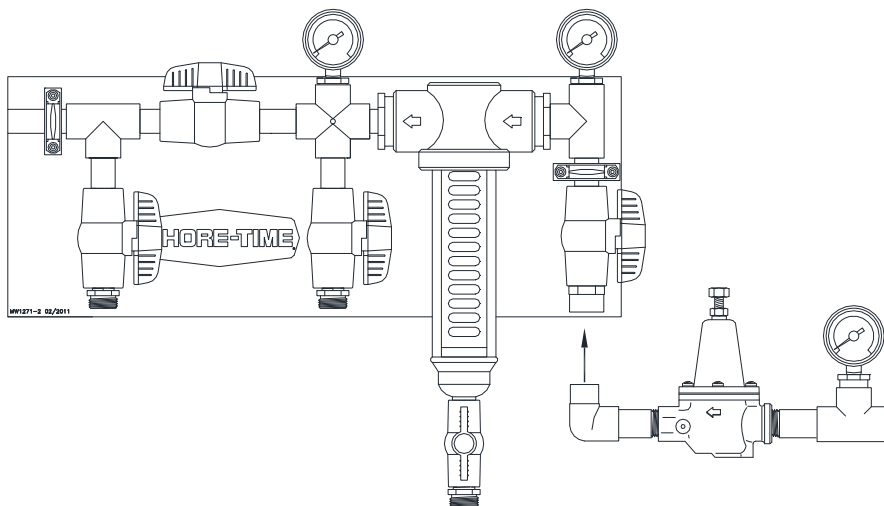
The Filter Control Panel is shipped secured to a Mounting Board. The Mounting Board and Filter Control Panel should be secured to wall or post using lag bolts (not supplied).

The Gauge Assembly is shipped un-assembled. Assemble the Gauge Assembly components as specified in the instruction (MW1052) shipped with the kit.

Low Pressure Control Panel
Part No. 36802-1
(5 - 10 psi)
(34.48 - 68.95 kPa)

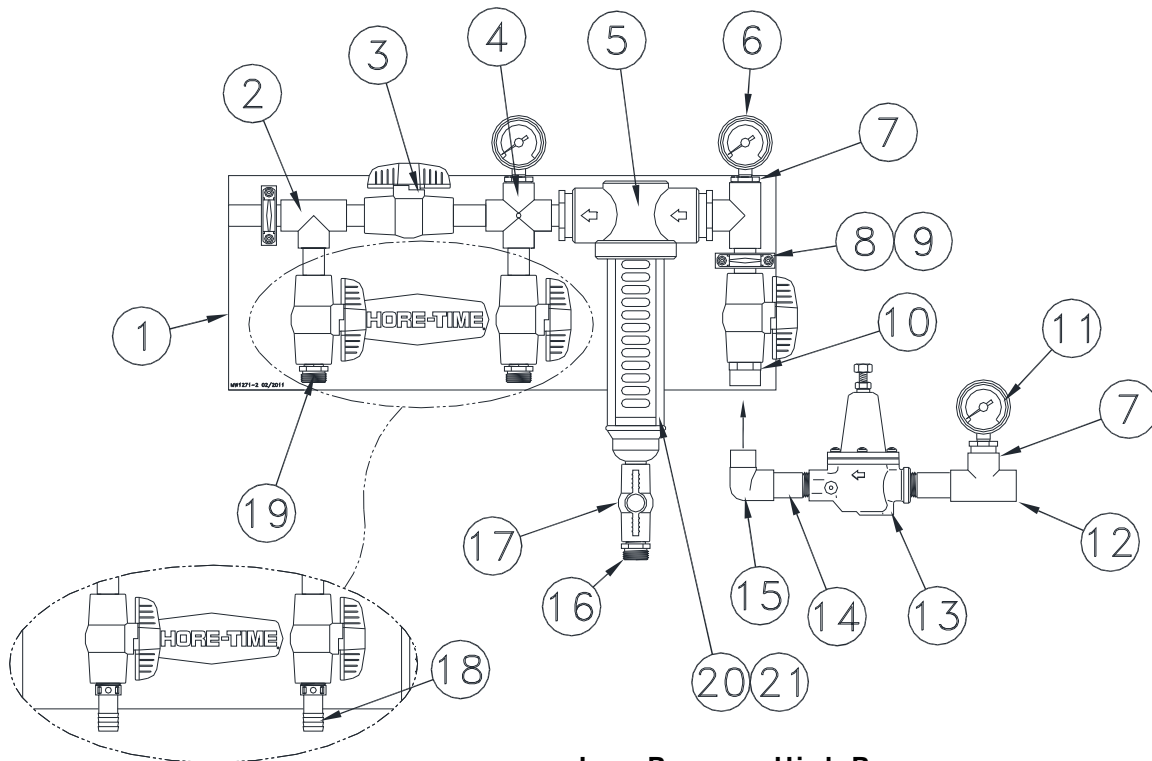


High Pressure Control Panel
Part No. 36802-2
(11+ psi)
(75.85 kPa)



Flushable Filter Control Panel

Low Pressure Part No.: 36802-1 • High Pressure Part No.: 36802-2



Item	Description	Low Press. Part No.	High Press. Part No.
1	Mounting Board	35303	35303
2	Medicator Outlet Assembly	36805	36805
3	3/4" Valve	35781	35781
4	3/4" Cross	7536	7536
5	Filter Inlet Assembly	36810	36810
6	Pressure Gauge	27722	7718
7	3/4" x 1/4" Reducer Bushing	7789	7789
8	Standoff Block	35300	35300
9	3/4" Plastic Conduit Clamp	35301	35301
10	3/4" PVC Male Adapter	9229	9229
11*	High Pressure Gauge	----	7791
12*	3/4" PVC Tee (SxSxS)	----	7538
13*	Step Regulator	----	29951
14*	3/4" Threaded PVC Nipple	----	7531-1
15*	3/4" PVC Street Ell	----	30138
16**	Nylon Adapter	29141	29141
17**	1/2" Ball Valve	34961	34961
18	3/4" Barb x 3/4" Pipe Adapter	29422	----
19	3/4" Male Adapter	----	7543
20**	Flush able Filter	36806	36806
21**	Filter Cover	46993	46993
These items may be ordered separately, if needed.			
--	1/2 Pint PVC Cement	6303-3	
--	Filter Repair Seal Kit	36807	
--	Replacement 140 Mesh Filter	36809	
--	Flush able Filter Assembly	36810	**Items Included

*Items 11 - 15 are not included with the Flushable Filter Control Panel. They may be ordered separately as an assembly under Part No. 35308.