



# Volumatic Regulator Upgrade Installation

## Part Number 55476-UG

### Disassembly

1. Remove (52025) Screws, and keep them for re-assembly.
2. Discard Bottom Regulator Half and spring.

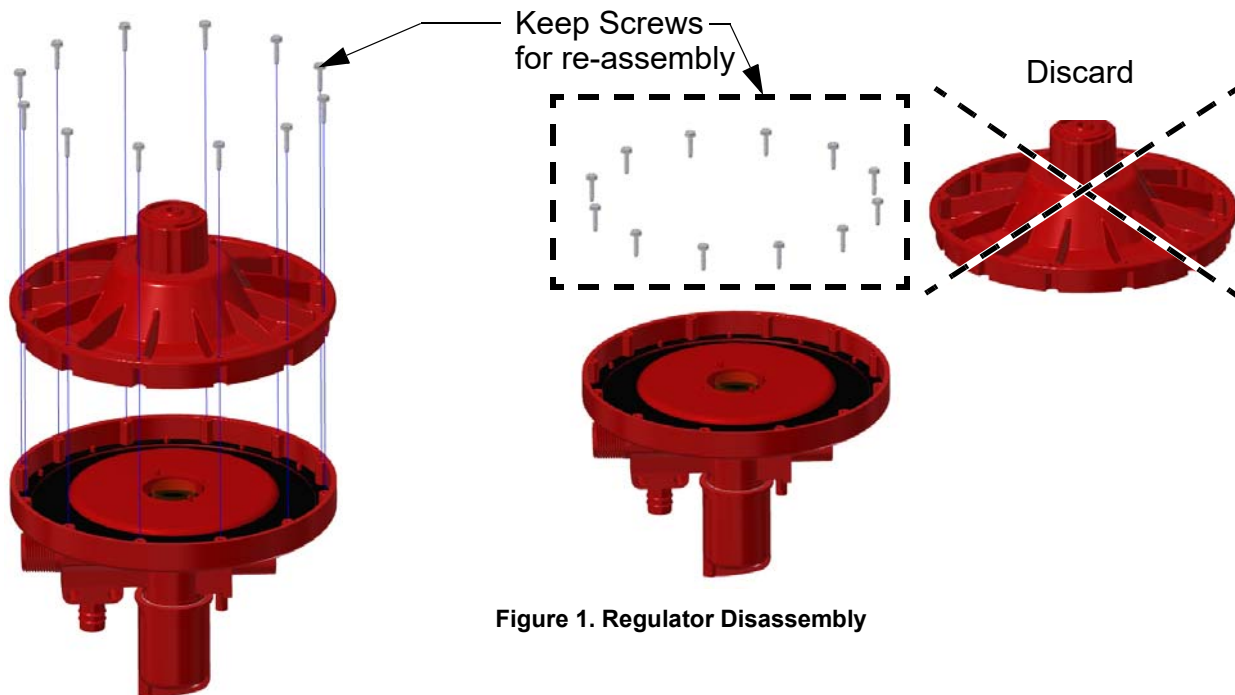


Figure 1. Regulator Disassembly

### Installing new Parts

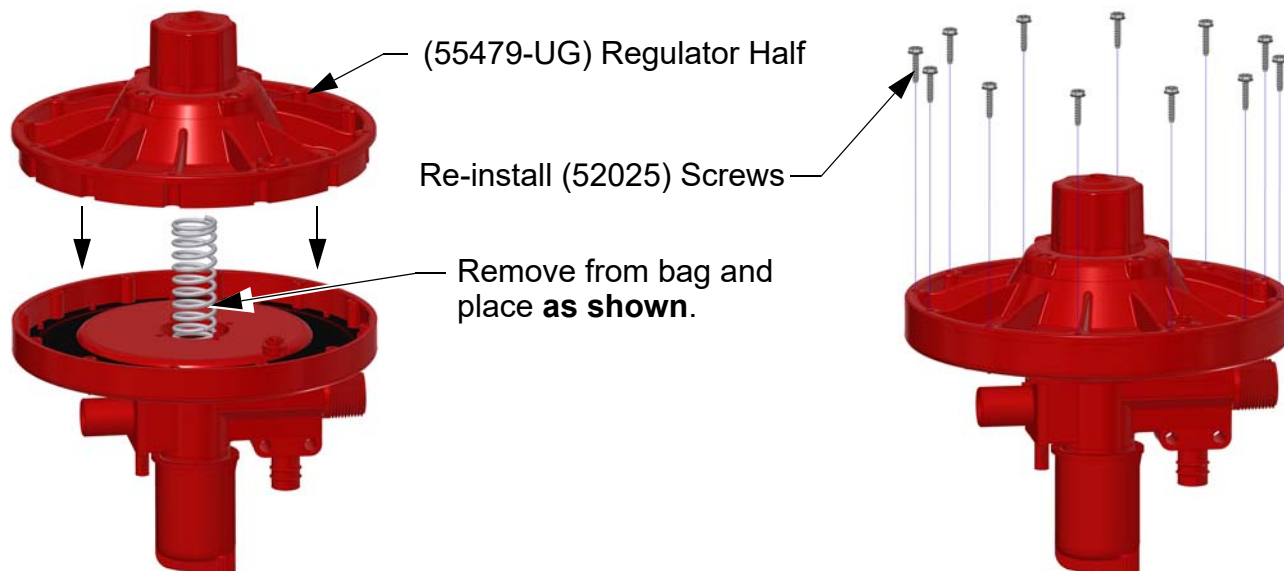
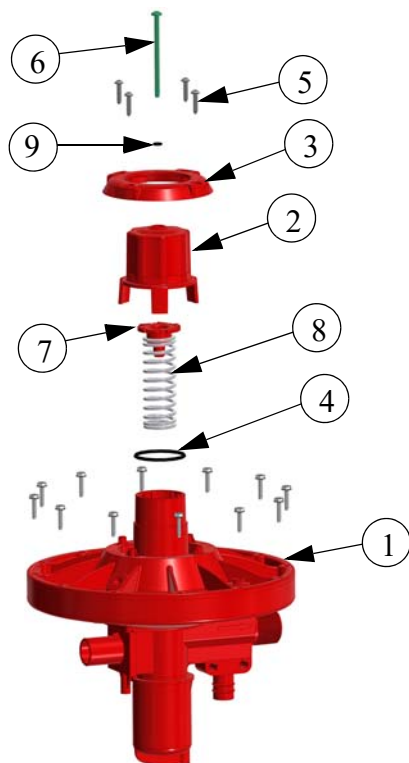


Figure 2. Regulator Assembly

## Part Numbers



Item	Description	Part No.
1	Bottom Regulator Half	55479-1
2	Adjustment Knob	55478
3	Knob Retainer	55477
4	1.392 ID O-Ring	42389
5	6-20 x .625 Screw	52025
6	9-18 x 2.5 Pan Hd. Phil. Screw	42387
7	Follower	42183
8	Spring	42393
9	O-Ring	56172

**Figure 3.Part Numbers**

**Made to work.**

**Built to last.®**

### Revisions to this Manual

Page No.	Description of Change	ECO
1	Added "Remove from bag"	34079

**Contact your nearby Chore-Time distributor or representative for additional parts and information.**

Chore-Time Group, A division of CTB, Inc.  
 PO Box 2000  
 Milford, Indiana 46542-2000 USA  
 Phone (574) 658-4101 Fax (877) 730-8825  
 Email: [chovertime@chovertime.com](mailto:chovertime@chovertime.com)  
 Internet: [www.chovertime.com](http://www.chovertime.com)