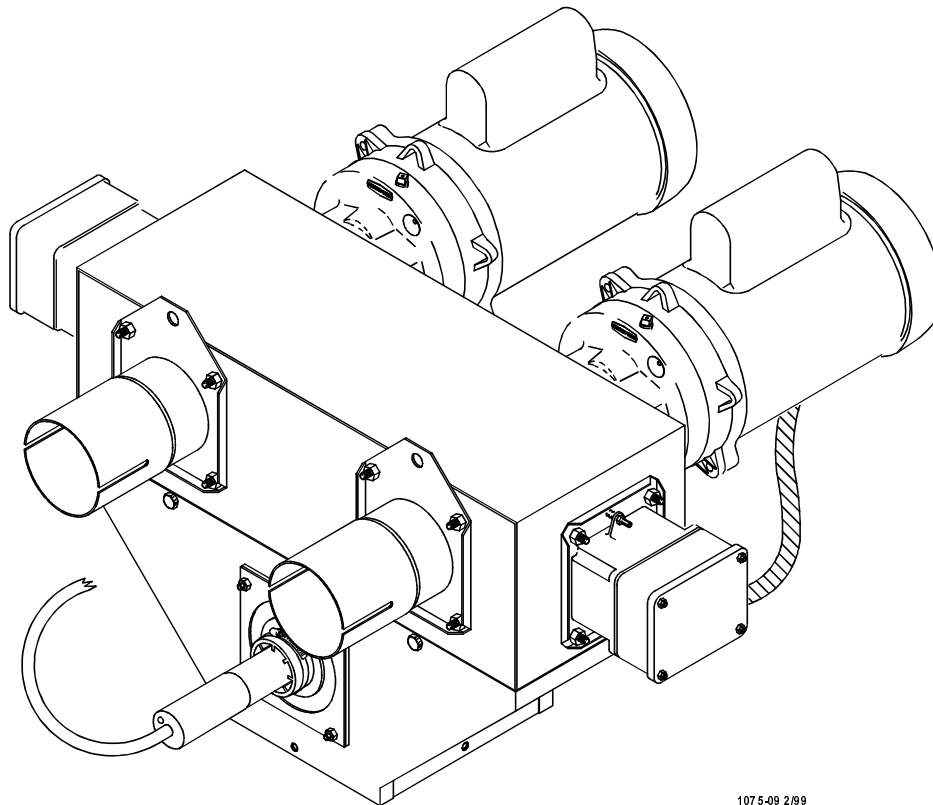


# **Twin Model 75 Control Unit**

## **Installation & Operator's Instruction Manual**



107 5-09 2/99

## Chore-Time Warranty

**Chore-Time Equipment** warrants each new product manufactured by it to be free from defects in material or workmanship for one year from the date of initial installation by the original purchaser. If such a defect is found by Chore-Time to exist within the one year period, Chore-Time will, at its option, (a) repair or replace such product free of charge, F.O.B. the factory of manufacture, or (b) refund to the original purchaser the original purchase price, in lieu of such repair or replacement.

### Conditions and limitations:

1. The product must be installed and operated in accordance with instructions published by **Chore-Time** or **warranty will be void.**
2. Warranty is void if **all components** of a system are not supplied by **Chore-Time.**
3. This product must be purchased from and installed by an authorized Chore-Time dealer or certified representative thereof, or the warranty will be void.
4. Malfunctions or failure resulting from misuse, abuse, negligence, alteration, accident, or lack of proper maintenance shall not be considered defects under this warranty.
5. This warranty applies only to systems for the care of poultry and livestock. Other applications in industry or commerce are not covered by this warranty.

**Chore-Time** shall not be liable for any **Consequential or Special Damage** which any purchaser may suffer or claim to have suffered as a result of any defect in the product. **“Consequential” or “Special Damages”** *as used herein include, but are not limited to, lost or damaged products or goods, costs of transportation, lost sales, lost orders, lost income, increased overhead, labor and incidental costs and operational inefficiencies.*

THIS WARRANTY CONSTITUTES CHORE-TIME'S ENTIRE AND SOLE WARRANTY AND CHORE-TIME EXPRESSLY DISCLAIMS ANY AND ALL OTHER WARRANTIES, INCLUDING, BUT NOT LIMITED TO, EXPRESS AND IMPLIED WARRANTIES AS TO MERCHANTABILITY, FITNESS FOR PARTICULAR PURPOSE SOLD AND DESCRIPTION OR QUALITY OF THE PRODUCT FURNISHED HEREUNDER.

Any exceptions to this warranty must be authorized in writing by an officer of the company. Chore-Time reserves the right to change models and specifications at any time without notice or obligation to improve previous models.

CHORE-TIME EQUIPMENT, A Division of CTB, Inc.  
P.O. Box 2000  
Milford, Indiana 46542-2000 U.S.A.

# Contents

<b>Topic</b>	<b>Page</b>	<b>User</b>
<b>Chore-Time Warranty</b> .....	<b>2</b>	<b>C,I</b>
Support Information .....	4	
<b>General</b> .....	<b>4</b>	<b>C</b>
Distributor and Installer Information .....	4	
<b>About This Manual</b> .....	<b>5</b>	<b>C,I</b>
<b>Safety Information</b> .....	<b>5</b>	<b>C,I</b>
Safety–Alert Symbol .....	5	
Understanding Signal Words .....	5	
Follow Safety Instructions .....	6	
Decal Descriptions .....	6	
DANGER: Moving Auger .....	6	
DANGER: Electrical Hazard .....	6	
<b>Introduction:</b> .....	<b>7</b>	<b>C</b>
<b>Installation:</b> .....	<b>7</b>	<b>I</b>
<b>Wiring Diagram:</b> .....	<b>9</b>	<b>C,I</b>
<b>Parts List:</b> .....	<b>10</b>	<b>C,D,I</b>

## General

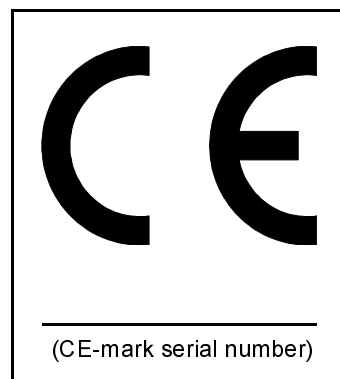
### Support Information

The Chore-Time Twin Model 75 Control Unit is designed to convey poultry and livestock feed types. Using this equipment for any other purpose or in a way not within the operating recommendations specified in this manual will void the warranty and may cause personal injury.

This manual is designed to provide comprehensive planning, installation, operation, and parts listing information. The Table of Contents provides a convenient overview of the information in this manual. The Table of Contents also specifies which pages contain information for the sales personnel, installer, and consumer (end user).

**IMPORTANT: CE stands for certified Europe.** It is a standard which equipment must meet or exceed in order to be sold in Europe. CE provides a benchmark for safety and manufacturing issues. **CE is required only on equipment sold in Europe.**

Chore-Time Equipment recognizes CE Mark and pursues compliance in all applicable products. *Fill in the CE-Mark serial number in the blank space provided for future reference.*



### Distributor and Installer Information

Please fill in the following information about your Product.  
Keep this manual in a clean, dry place for future reference.

**Distributor's Name** \_\_\_\_\_

**Distributor's Address** \_\_\_\_\_

**Distributor's Phone** \_\_\_\_\_ **Date of Purchase** \_\_\_\_\_

**Installer's Name** \_\_\_\_\_

**Installer's Address** \_\_\_\_\_

**Installer's Phone** \_\_\_\_\_ **Date of Installation** \_\_\_\_\_

**System Specifications** \_\_\_\_\_

\_\_\_\_\_

## About This Manual

The intent of this manual is to help you in two ways. One is to follow step-by-step in the order of assembly of your product. The other way is for easy reference if you have questions in a particular area.

**Important ! Read ALL instructions carefully before starting construction.**

**Important ! Pay particular attention to all SAFETY information.**

- *Metric measurements are shown in millimeters and in parentheses, unless otherwise specified. " " equals inches and " ' " equals feet in English measurements.*

*Examples:*

*1" [25.4]*

*4' [1 219]*



- Optional equipment contains necessary instructions for assembly or operation.
- Major changes from the last printing will be listed on the back cover.
- This Planning Symbol is used in areas where planning needs to take place before construction continues.
- Very small numbers near an illustration (*i.e.*, 1257-48) are identification of the graphic, not a part number.

## Safety Information

**Caution, Warning and Danger Decals** have been placed on the equipment to warn of potentially dangerous situations. Care should be taken to keep this information intact and easy to read at all times. Replace missing or damaged safety signs.

Using the equipment for purposes other than specified in this manual may cause personal injury and or damage to the equipment.



### Safety–Alert Symbol

**This is a safety–alert symbol.** When you see this symbol on your equipment, be alert to the potential for personal injury. This equipment is designed to be installed and operated as safely as possible...however, hazards do exist.

### Understanding Signal Words

**Signal words** are used in conjunction with the safety–alert symbol to identify the severity of the warning.



**DANGER** indicates an imminently hazardous situation which, if not avoided, **WILL** result in death or serious injury.



**WARNING** indicates a potentially hazardous situation which, if not avoided, **COULD** result in death or serious injury.



**CAUTION** indicates a hazardous situation which, if not avoided, **MAY** result in minor or moderate injury.

## Safety Information- continued

### Follow Safety Instructions

Carefully read all safety messages in this manual and on your equipment safety signs. Follow recommended precautions and safe operating practices.

Keep safety signs in good condition. Replace missing or damaged safety signs.

### Decal Descriptions

#### **DANGER: Electrical Hazard**

For decal placement see parts listing on page 10.

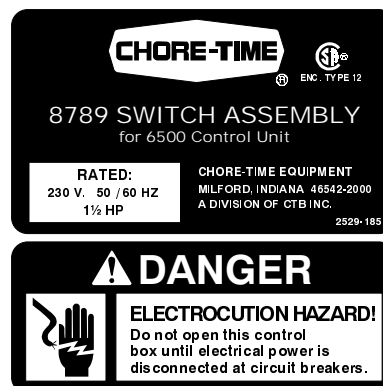
Disconnect electrical power before inspecting or servicing equipment unless maintenance instructions specifically state otherwise.

Ground all electrical equipment for safety.

All electrical wiring must be done by a qualified electrician in accordance with local and national electric codes.

Ground all non-current carrying metal parts to guard against electrical shock.

With the exception of motor overload protection, electrical disconnects and over current protection are not supplied with the equipment.



## Introduction

The Twin Model 75 Control Unit is designed to accept (2) Model 75 FLEX-AUGER Feed Delivery Systems. This unit is designed to fill a Twin Extension or Transfer Boot. The outgoing boot system should match the delivery capacity of the twin control whether operating one of two lines. The unit includes (2) safety switches, (2) Tube Anchor Weldments, (1) Proximity Switch, (1) Model 75 Control Body, (1) Control Hopper Weldment, and (1) Adapter Plate.

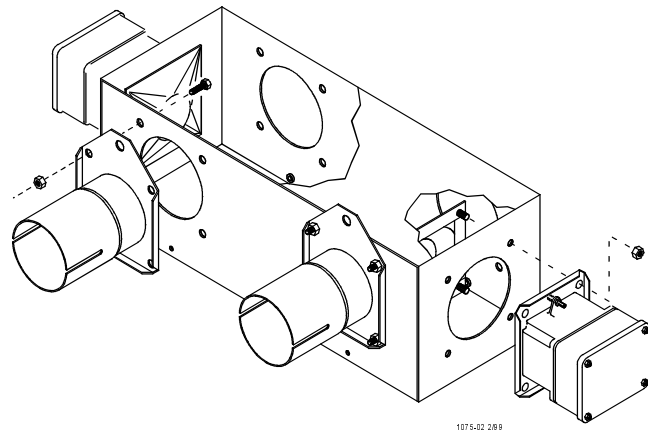
The Proximity Switch may be wired to operate each line independently or together.

## Installing the Twin Model 75 Control Unit

1. Secure the Switch Assemblies to the ends of the Control Unit Body as shown in **Figure 1**, using 10-32 hardware supplied. Adjust the switches according to the Decal on top of the Switch Assemblies.
2. Secure the Anchor Tube Weldments to the Control Unit Body as shown in **Figure 1**, using 5/16-18 hardware supplied.

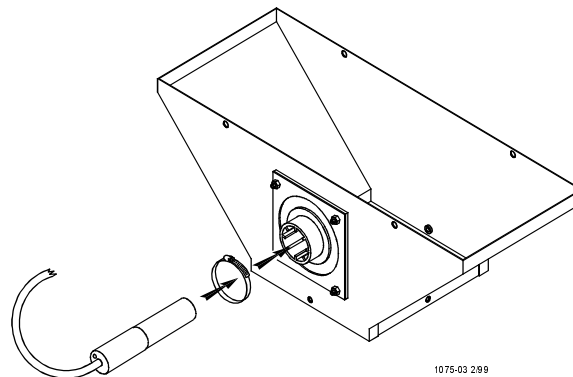


**Note:** The incoming lines can be from opposite directions and from either side of the control.



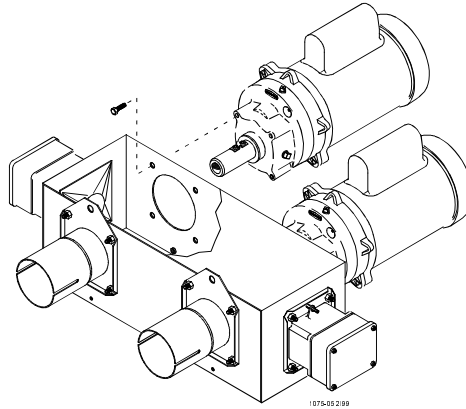
**Figure 1. Installing the Anchor Tube Weldments and Switch Assemblies**

3. Install the Proximity Switch in the plastic Switch Mounting Plate. The sensing end of the Proximity Switch should be inserted approximately 1 inch [25 mm] into the hopper. Secure the Proximity Switch in place using the clamp supplied. See **Figure 2**.



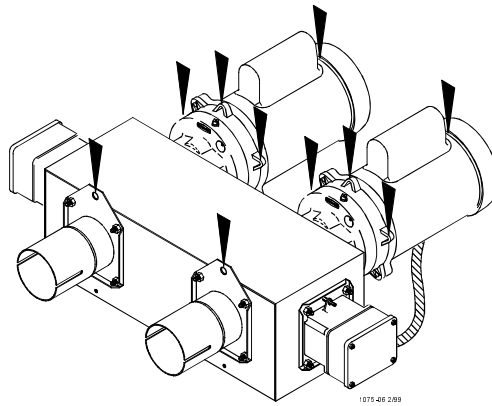
**Figure 2. Installing the Proximity Switch**

4. Mount the Power Units (not supplied) on the Control Unit Body, opposite the Anchor Tube Weldments, using 5/16-18 hardware. See **Figure 3**.



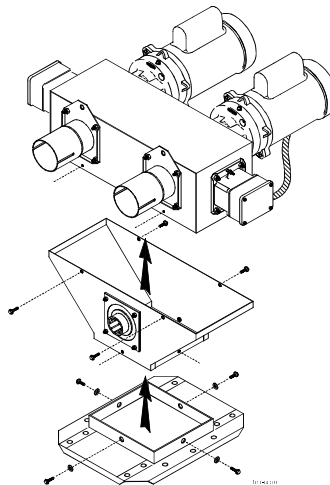
**Figure 3. Mounting the Power Units**

5. Support the Control Unit/Power Units from the ceiling or rafters at the locations specified in **Figure 4**. Make sure the supporting structure is adequate to hold the Control Unit, Power Units, and feed.



**Figure 4. Hanging the Twin Model 75 Control Unit**

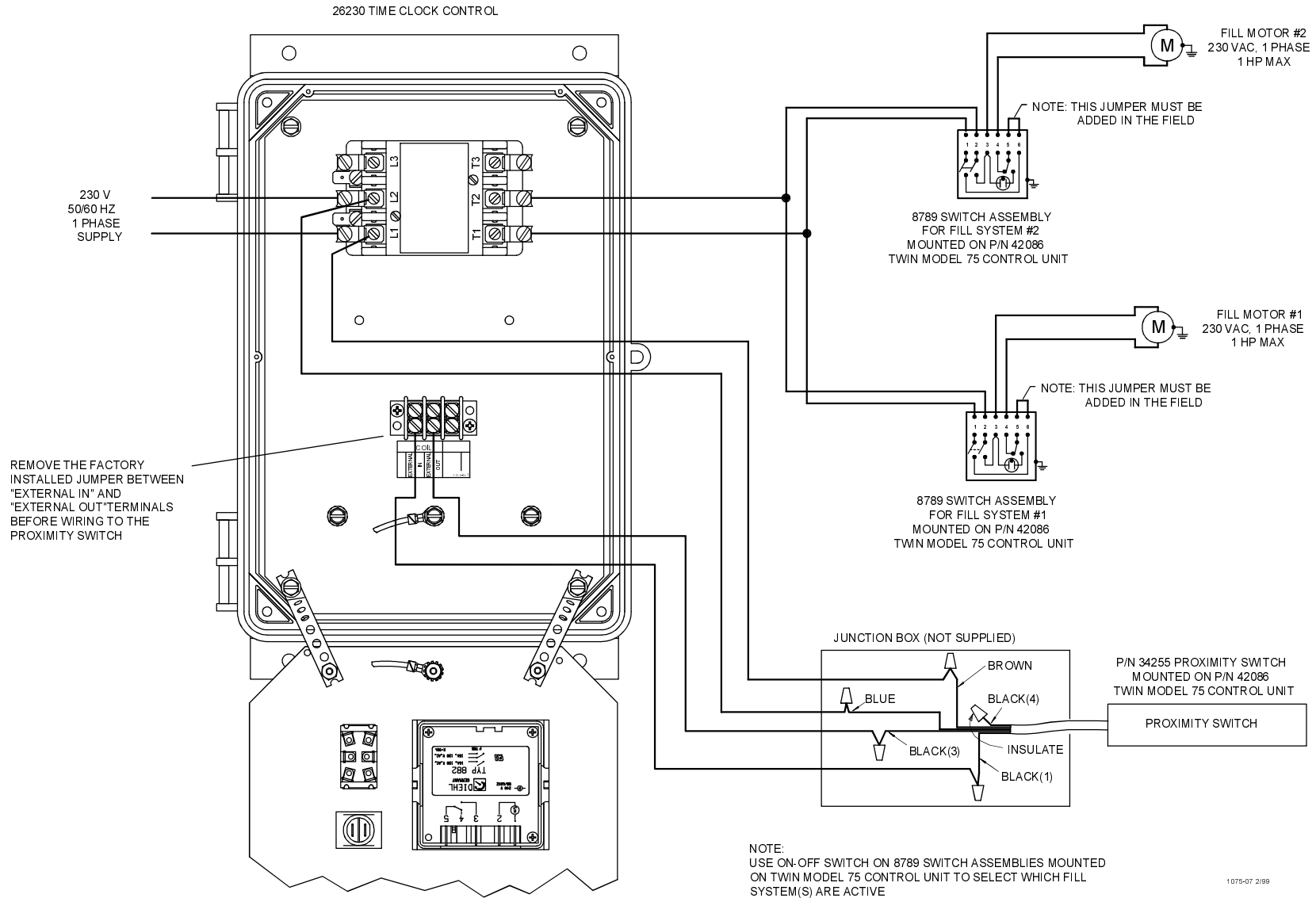
6. Install the Auger Tubes and Auger as specified in the fill system installation manual (MA1000).
7. Secure the Hopper Weldment to the bottom the Control Unit Body and the Adapter plate to the Hopper Weldment, as shown in **Figure 5**, using hardware provided.



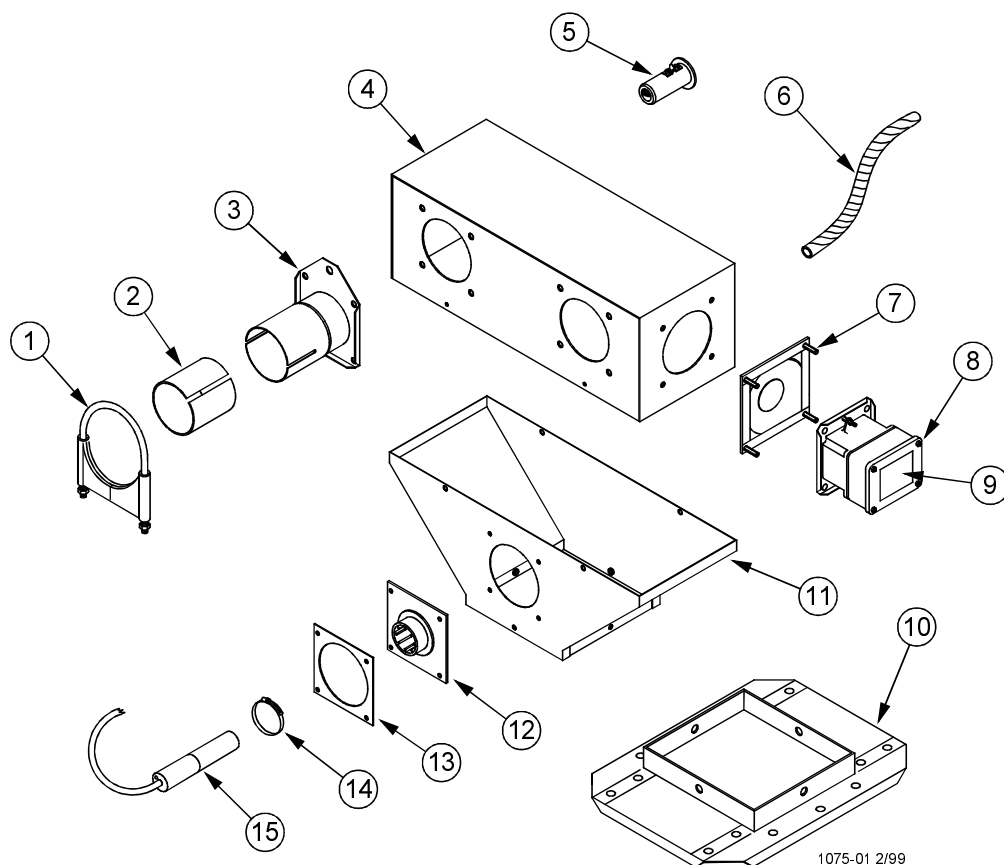
**Figure 5. Installing the Hopper Weldment and the Adapter Plate**

8. Wire the system according to the wiring diagram provided on the following page.

# Twin Model 75 Control Unit System Wiring Diagram:



## Twin Model 75 Control Unit Parts List (P/N 42086)



Item	Description	Part No.
1	Clamp	6515
2	Tube Insert	6524
3	Tube Anchor Weldment	6518
4	Control Body Weldment	42111
5	Driver Assembly	6862
6	Flexible Conduit	26982-10
7	Diaphragm Assembly	7900
8	Switch Assembly	8789
9	Switch Assembly Decal	2529-185
10	Adapter Plate	7856
11	Control Hopper Weldment	42112
12	Proximity Plate Weldment	34758
13	Window Plate	7842
14	Adjustable Clamp	3527
15	Proximity Switch	34255

\*Items 1, 2, 3, and 5 may be ordered under Chore-Time part number 24102-2.

\*\*Items 1-15, except items 1, 2, 3, and 5, may be ordered under Chore-Time part number 42126.

**This page intentionally left blank**



**Made to work.  
Built to last.**

### **Revisions to this Manual**

<b>Page No.</b>	<b>Description of Change</b>
-----------------	------------------------------

Contact your nearby Chore-Time distributor or representative for additional parts and information.

CTB Inc.  
P.O. Box 2000 • Milford, Indiana 46542-2000 • U.S.A.  
Phone (219) 658-4101 • Fax (800) 333-4191  
E-Mail: [ctb@ctbinc.com](mailto:ctb@ctbinc.com) • Internet: <http://www.ctbinc.com>

Printed in the U.S.A.