



Model 108 Bin-to-Bin Fill Cap Kit

Part Number 42287

Introduction

The Model 108 Bin-to-Bin Fill Cap Kit is designed to accomodate filling or bypassing a hopper bin in a multiple bin application.

Example: Units 1, 2, and 3 would be Bin-to-Bin Fill Cap Kits and unit 4 would be a Terminal Bin Fill Cap Kit. See **Figure 1**.

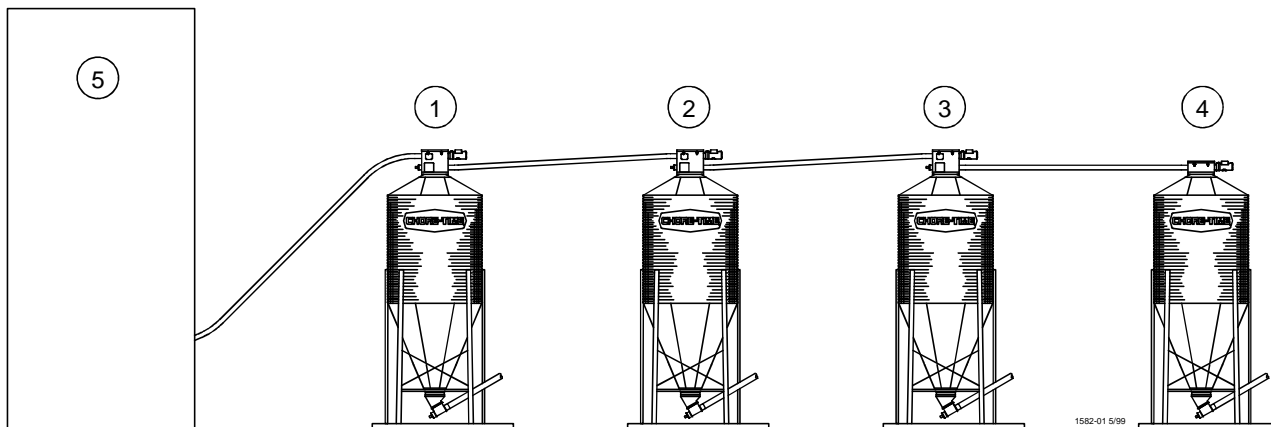
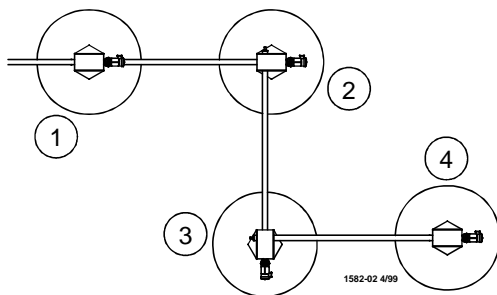


Figure 1. Bin Layout

Item	Description
1	Intermediate Hopper Bin Number 1
2	Intermediate Hopper Bin Number 2
3	Intermediate Hopper Bin Number 3
4	Terminal Hopper Bin
5	Feed Mill

The Bin-to-Bin Fill Cap Kits replace the existing lid or lids on top of an intermediate bin in a multiple bin fill system. The Bin-to-Bin Fill Cap Kit allows inline, right hand, or left hand turns in the fill system layout. See **Figure 2**.



Item	Description
1	Inline Cap
2	Right Hand Turn Cap
3	Left Hand Turn Cap
4	Terminal Cap

Figure 2. Bin layout for inline, right hand, or left hand turns

Chore-Time Equipment a Division of CTB Inc.
P.O. Box 2000 • Milford, Indiana 46542-2000 • U.S.A.

Phone (219) 658-4101 • Fax (800) 333-4191

E-Mail: ctb@ctbinc.com • Internet: <http://www.ctbinc.com>

This is accomplished by rotating the Extension Boot when assembling with the Control Unit. **Figure 3** shows each configuration along with the direction the feed flows inside the Bin-to-Bin Fill Cap Kit.

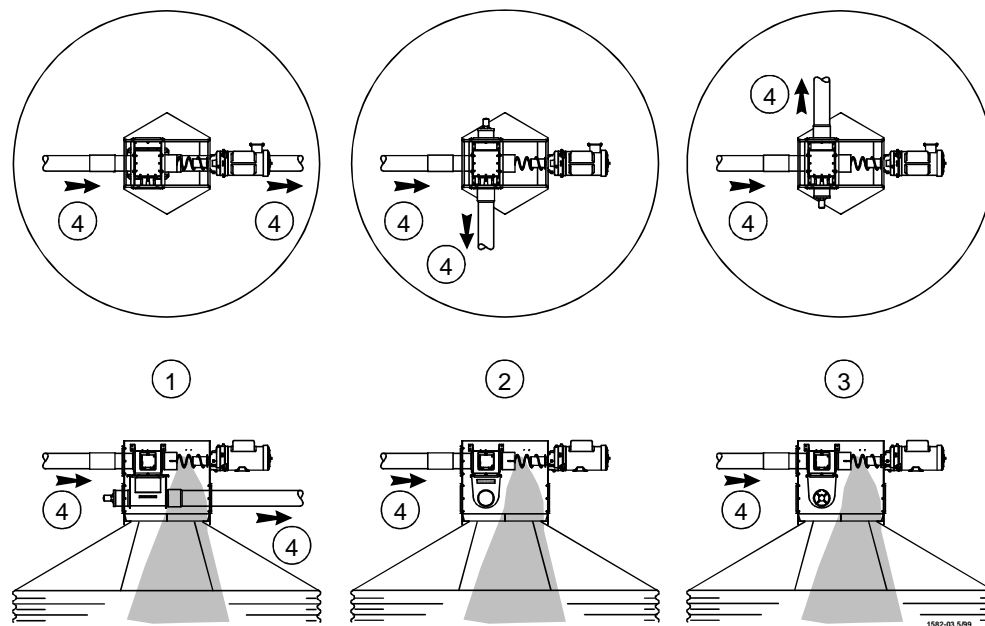


Figure 3. Top and Side views of bin layouts showing feed flow

Item	Description
1	Inline Cap
2	Right Hand Turn Cap
3	Left Hand Turn Cap
4	Direction of Feed Flow

DANGER: Moving Auger

This decal is placed on the Control Unit.

See parts list on page 4 for placement.

Severe personal injury will result, if the electrical power is not disconnected, prior to servicing the equipment.



DANGER: Electrical Hazard

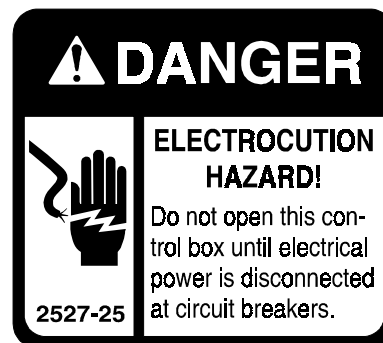
Disconnect electrical power before inspecting or servicing equipment unless maintenance instructions specifically state otherwise. See parts list on page 4 for placement

Ground all electrical equipment for safety.

All electrical wiring must be done by a qualified electrician in accordance with local and national electric codes.

Ground all non-current carrying metal parts to guard against electrical shock.

With the exception of motor overload protection, electrical disconnects and over current protection are not supplied with the equipment.



Installation

Refer to the parts list drawing on page 3 as required for assembly.

1. Place the Sponge Tubing over the lip of the bin opening.
2. Assemble Extension Boot to Adapter Plate and Control Unit in desired inline, right hand, or left hand position, as shown in **Figure 4**. The Cover Weldment is shipped assembled for an inline installation. Reposition the seals and cover plates as needed.

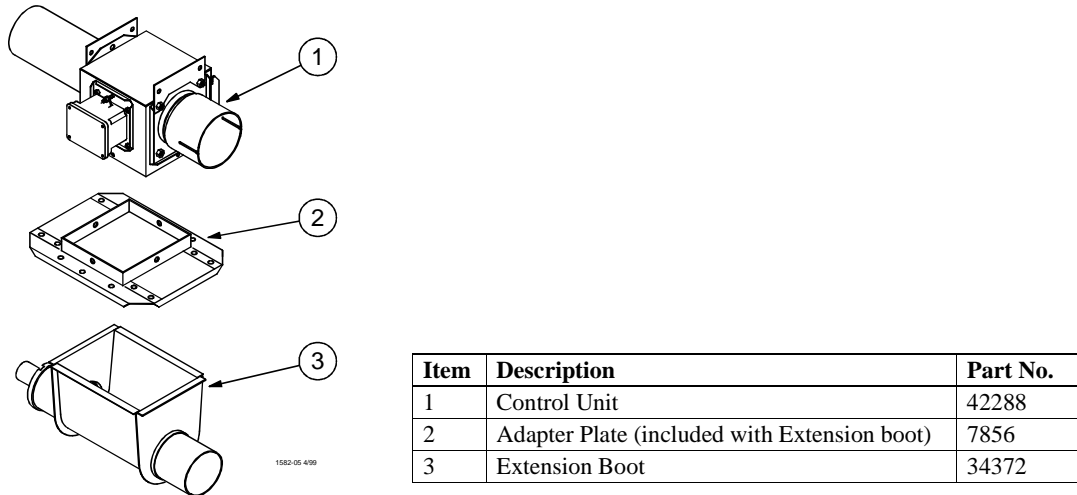


Figure 4. Assembling Extension Boot, Adapter Plate, and Control Unit (inline assembly shown)

3. Assemble the Control Unit with long tube anchor weldment thru upper inlet hole of cover weldment and bolt control unit brackets to support rails with hardware provided. See **Figure 5**.

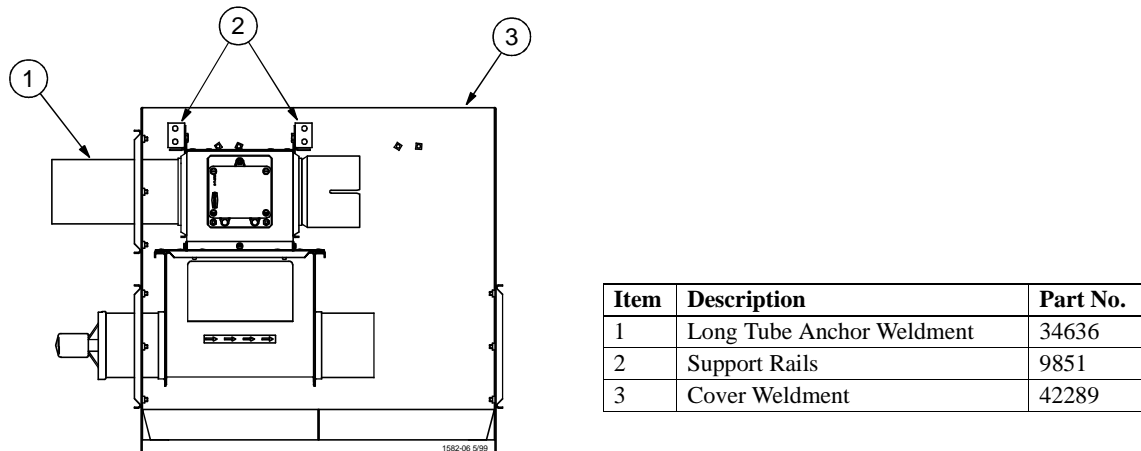
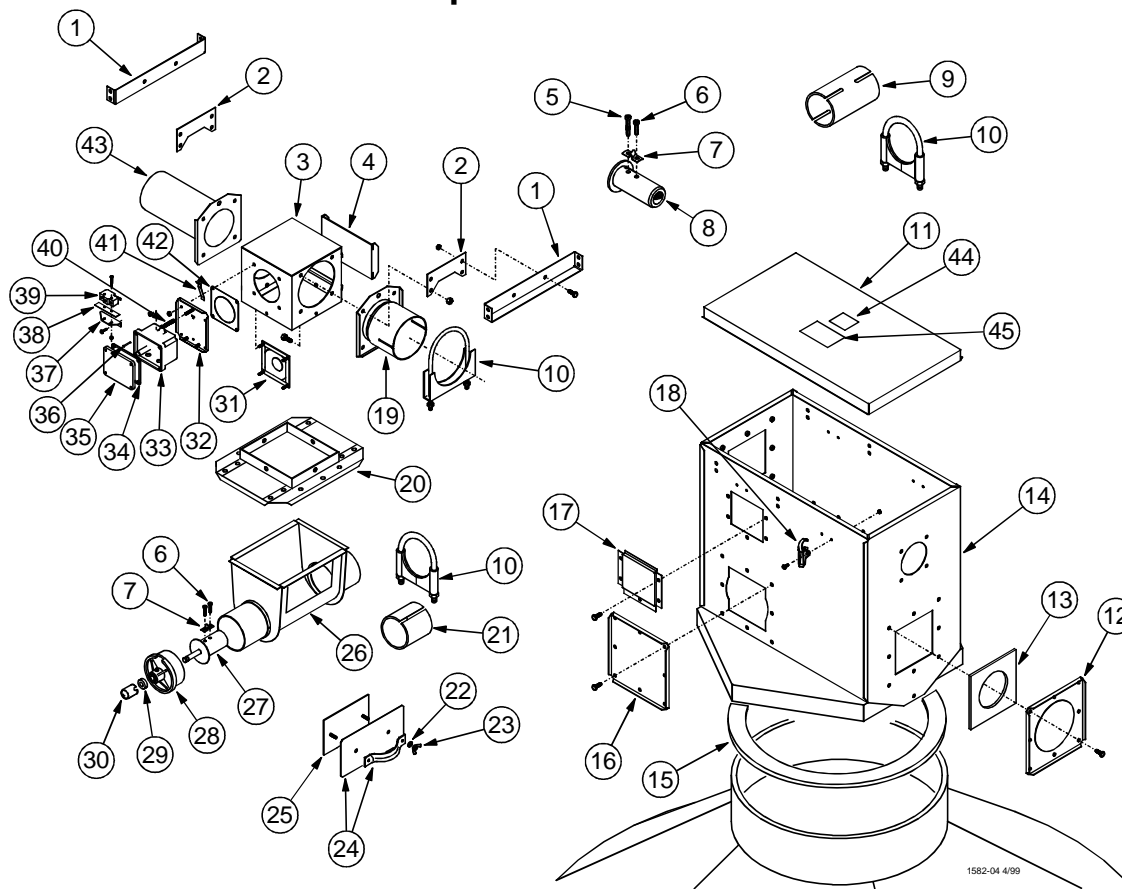


Figure 5. Assembling Control unit and Boot Assembly to Cover Weldment (inline assembly shown)

4. Set the cover weldment over the bin opening in line with the other bins.
5. Install the auger as specified in the fill system installation manuals (MA1032 and MA1102).
6. Set the Lid Assembly on the Cover Weldment and secure using the over center clamps.

Note: Level Switching and Control Panel (not supplied) can be configured to best suit the application. The wiring and controls should be planned to minimize any empty running time on the Augers.

Model 108 Bin-to-Bin Fill Cap Kit Parts List



Item	Description	Part No.
1	Support Rail	9851
2*	Gusset	9948
3*	Body Assembly	9857
4*	Outlet Assembly Slide	5073
5	5/16-18 x 2-3/4 Socket Head Cap Screw	6850-2
6	5/16-18 x 7/8 Socket Head Cap Screw	6850-1
7	Anchor Clamp	7703
8	Driver Weldment	30312
9	Steel Connector	30277
10	4-7/16" Tube Clamp	34338
11	Lid Assembly	7689
12	Seal Plate	9849
13	Seal	34334
14	Cover Weldment	42289
15	Sponge Tubing	5928
16	Cover Plate	9852
17	Cover	13329
18	Over Center Clamp	2536
19*	Tube Anchor Weldment	34543
20**	Adapter Plate	7856
21**	Tube Insert	34337
22**	Sealing Washer	8491
23**	5/16-18 Wing Nut	2146

Item	Description	Part No.
24**	Cover Weldment	6301
25**	Back Plate Assembly	6298
26**	Boot Body Weldment	30386
27**	Anchor Weldment	34369
28**	Bearing Cap Assembly	30314
29**	5/8" Set Collar	1386
30**	Safety Cap	29703
31*	Diaphragm Assembly	7900
32*	Mounting Plate Assembly	7908
33*	Switch Box	7841
34*	Gasket	6777
35*	Switch Box Cover	6776
36*	Rivet	8757
37*	Switch Bracket	7068
38*	Switch Insulation	1907-5
39*	Actuator Switch	7114
40*	Spring	6972
41*	Paddle	7896
42*	Seal	4873
43*	Long Tube Anchor Weldment	34636
44	Danger Electrical Decal	2527-9
45	Danger Moving Auger Decal	2527-9

*These items are included with part number 42288 Control Unit.

**These items are included with part number 34372 Extension Boot Assembly.