



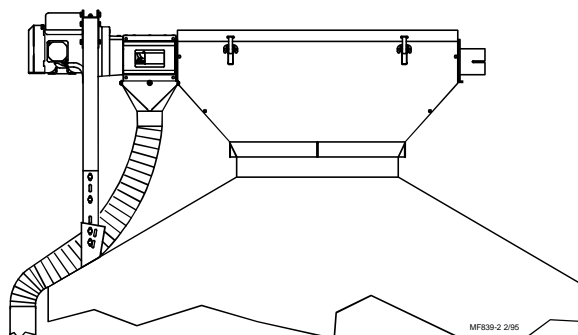
# WEIGH-MATIC® Model 90 Screener

## Installation Instructions

### Introduction

The Model 90 WEIGH-MATIC® Feed Screener is designed to screen foreign objects from the feed. It is used primarily with the ULTRAPAN® and ULTRAFLO® Feeding Systems.

It is recommended to install and anchor the feed bin **prior** to the Feed Screener installation. The feed bin should be assembled without the lid installed.

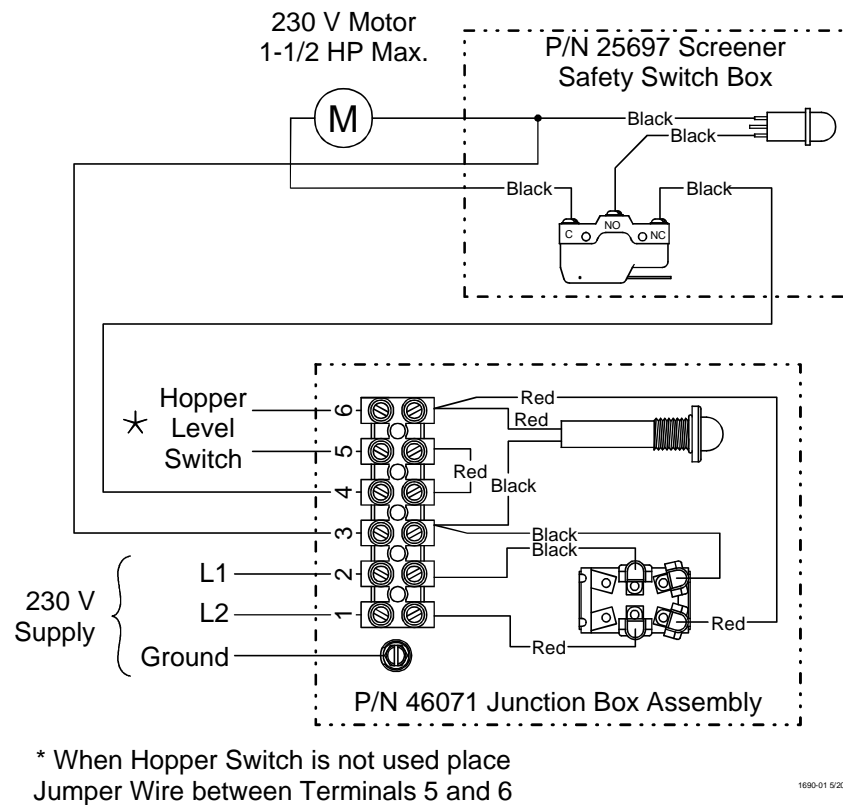


### Installation

Refer to the parts list in this instruction for proper assembly.

1. Install the Gasket to the Fill Collar of the bin.
2. Place the Screener Body to the top of the feed bin. The Feed Screener should be in line with the direction the supply fill system will run.
3. Install the Extruded Plates, Gaskets, Tube Anchor, and Control Unit with the 5/16-18 hardware supplied.
4. The Screen is shipped in halves and must be assembled. Install a Screen Retainer to each side of the screen halves to secure the flanges together. Place four adjustable clamps around the screen assembly to secure. **Do not over-tighten the clamps.**
5. Fasten the Driver Assembly to the Power Unit output shaft then bolt to the Control Unit using 5/16-18 hardware supplied. The Agitator will extend through the Control Unit and into the center of the Screener. Be sure to install the Drive Roll Pin through the Driver and Agitator to secure.
6. Assemble the Motor Support Kit. The Motor Support bolts to the top of the feed bin using self-drilling screws and gasket washers supplied. Install the "U" Bolt to the Top Channel as shown in parts listing. Suspend the Power Unit from the Motor Support using the "U" Bolt and the "S" Hook.
7. Fasten the Flexible drop Tube to the Funnel of the Control Unit. Attach a piece of Drop Tube (part number 9900, not supplied) from the Flexible Drop Tube to a container on the concrete pad. The container will be used to catch the foreign material from the Feed Screener.
8. Install the Weigh Bin Fill System as specified in the FLEX-AUGER® Installation Manual.
9. Mount the Screener Junction Box to a bin leg using hardware supplied.

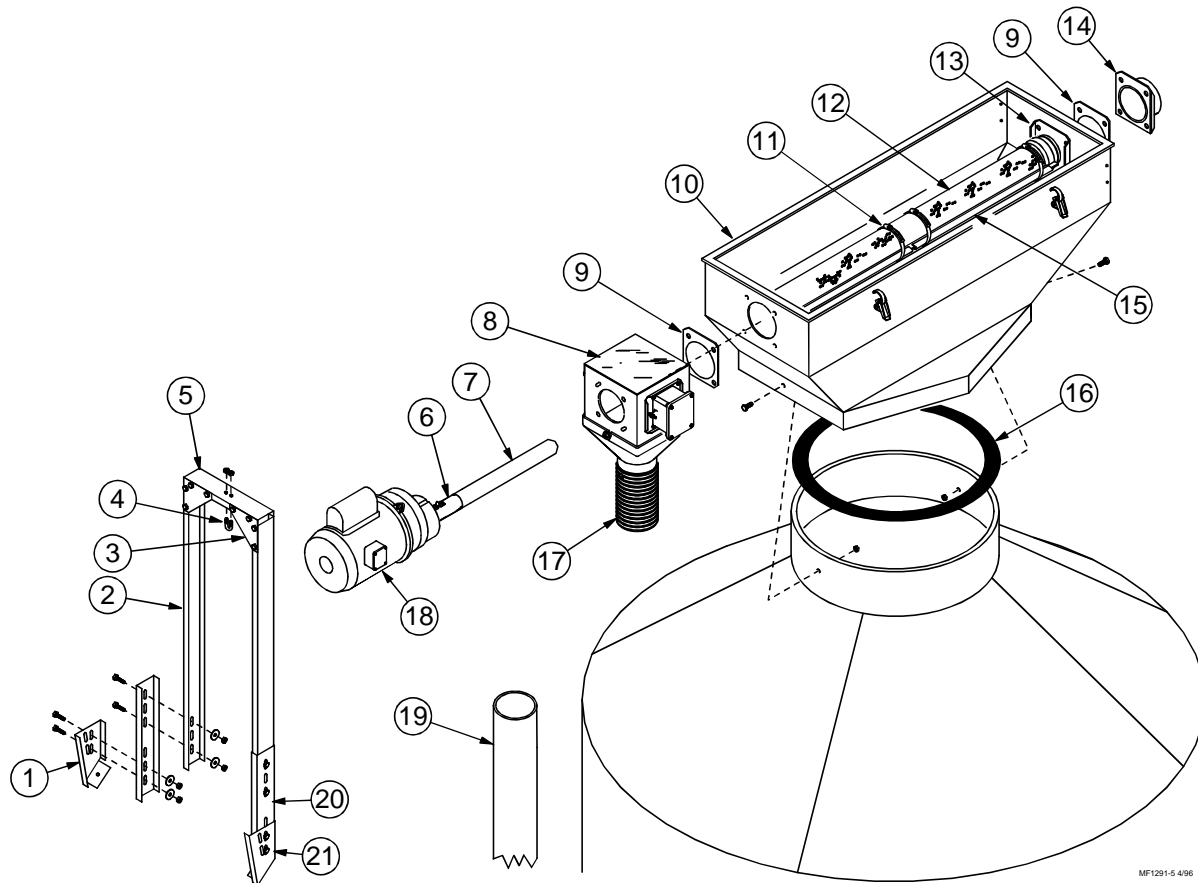
10. Wire the system according to the diagram below.



11. Place the Screener Cover on top of the Screener and secure it in place using over-center clamps.

## Parts Listing

### WEIGH-MATIC Model 90 Screener



| Item | Description       | Part No. |
|------|-------------------|----------|
| 1**  | Foot (R.H.)       | 25467-2  |
| 2**  | Support Channel   | 25468    |
| 3**  | Corner Support    | 25470    |
| 4**  | “U” Bolt          | 28874    |
| 5**  | Top Channel       | 25469    |
| 6*   | Driver Assembly   | 25705    |
| 7*   | Agitator          | 25674    |
| 8    | Control Unit Head | 25720    |
| 9    | Seal              | 4873     |
| 10   | Screener Body     | 25446    |
| 11   | Clamp             | 6183     |
| 12   | Screen            | 7436     |

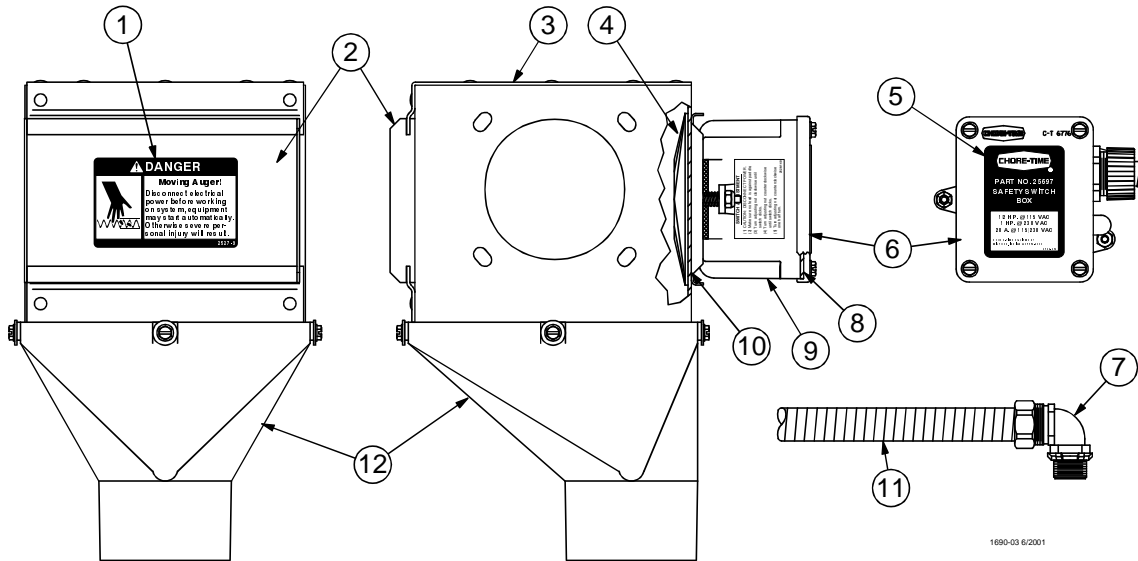
| Item | Description                            | Part No. |
|------|--|----------|
| 13   | Extruded Plate                         | 22084    |
| 14   | Anchor Tube                            | 5069     |
| 15   | Screen Retainer                        | 24796    |
| 16   | Lid Seal Gasket                        | 5928     |
| 17   | Flexible Drop Tube                     | 25702    |
| 18   | Power Unit (not component of 25432)    | 3259-52  |
| 19   | Drop Tube (not supplied with Screener) | 9900     |
| 20** | Support Channel Extension              | 35800    |
| 21** | Foot (L.H.)                            | 25467-1  |
| —§   | Junction Box Assembly                  | 46071    |
| —    | Screener Cover                         | 25701    |

\*May be ordered as an assembly under Part Number 25704.

\*\*May be ordered as an assembly under Part Number 25472.

§Junction Box not shown. See individual parts list.

Screener Control Unit Part Number 25720

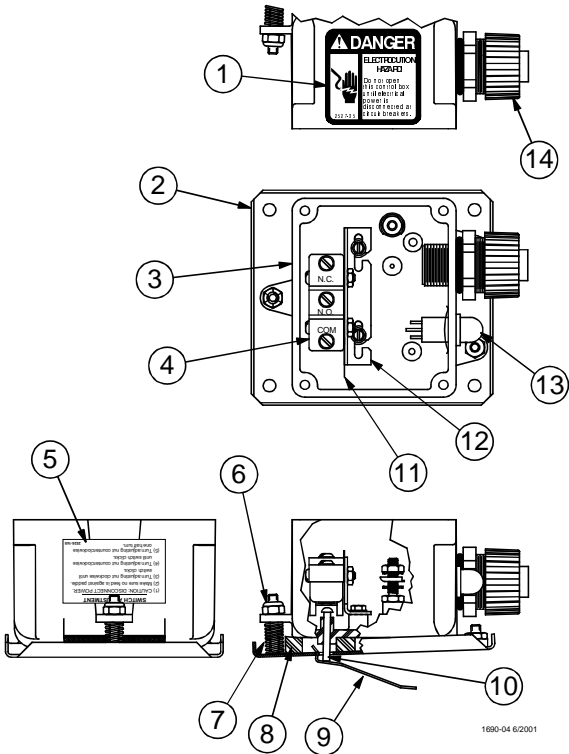


| Item | Description        | Part No. |
|------|--------------------|----------|
| 1    | Danger Decal       | 2527-9   |
| 2    | Slide              | 5073     |
| 3    | Body Assembly      | 24268    |
| 4    | Diaphragm Assembly | 7900     |
| 5    | Safety Box Decal   | 2529-259 |
| 6    | Switch Box Cover   | 6776     |

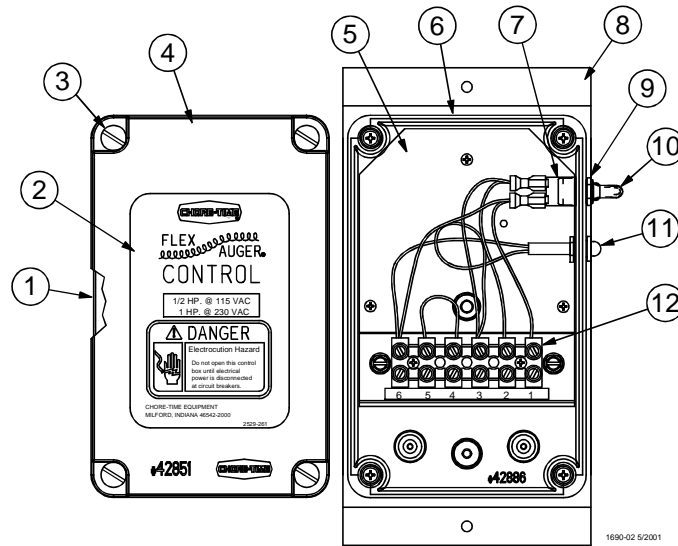
| Item | Description                 | Part No. |
|------|-----------------------------|----------|
| 7    | 1/2" Liquid Tight Connector | 23810    |
| 8    | Gasket                      | 6777     |
| 9    | Safety Switch Box Assembly  | 25697    |
| 10   | Seal                        | 4873     |
| 11   | 1/2" Flexible Conduit       | 26982-9  |
| 12   | Drop                        | 13803    |

Safety Switch Box Assembly Part Number 25697

| Item | Description               | Part No. |
|------|---------------------------|----------|
| 1    | Danger Decal              | 2527-35  |
| 2    | Mounting Plate Assembly   | 7908     |
| 3    | Machined Switch Box       | 25696    |
| 4    | SPDT Actuator Switch      | 46091    |
| 5    | Switch Adjustment Decal   | 2526-140 |
| 6    | #10-32 Locknut            | 6963     |
| 7    | Spring                    | 6972     |
| 8    | Gasket                    | 6968-1   |
| 9    | Paddle                    | 7896     |
| 10   | 1/8 x 1 Round Head Rivet  | 8757     |
| 11   | Switch Insulation         | 1907-5   |
| 12   | Switch Bracket            | 7068     |
| 13   | Pilot Light Assembly      | 7044     |
| 14   | 1/2" Liquid Tight Fitting | 26980    |

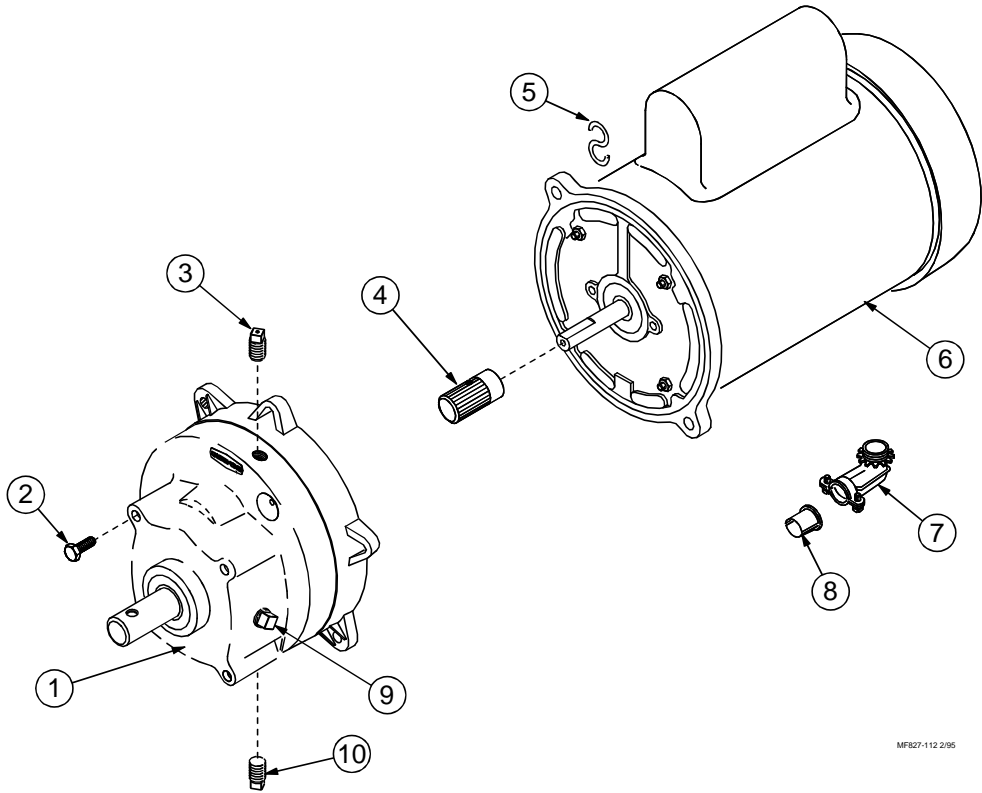


## Junction Box Assembly Part Number 46071



| Item | Description               | Part No. |
|------|---------------------------|----------|
| 1    | Gasket                    | 42854    |
| 2    | Control Decal             | 2529-261 |
| 3    | Plastic Screw             | 42849    |
| 4    | Electric Box Cover        | 42851    |
| 5    | Mount Panel               | 46072    |
| 6    | Machined Electrical Box   | 43883-1  |
| 7    | Toggle Switch             | 7767     |
| 8    | Box Mount Panel           | 46069    |
| 9    | Shoulder Nut              | 13407    |
| 10   | Switch Boot               | 13406    |
| 11   | Pilot Light               | 46047    |
| 12   | 6 Position Terminal Block | 34925-6  |

Model 90 Screener Power Units



| Item | Description                           | 3259-52<br>Part No. | 3259-88<br>Part No. | 3259-104<br>Part No. |
|------|---------------------------------------|---------------------|---------------------|----------------------|
| 1    | Gearhead Assembly                     | 3261-7              | 3261-10             | 3261-10              |
| 2    | 5/16-18 x 5/8" Hex Head Machine Screw | 4412-1              | 4412-1              | 4412-1               |
| 3    | Vent Plug                             | 3523                | 3523                | 3523                 |
| 4    | Pinion Assembly                       | 5046                | 5046                | 5046                 |
| 5    | "S" Hook                              | 4270                | 4270                | 4270                 |
| 6    | Motor                                 | 5051                | 6305                | 28034EUR             |
| 7    | 90 Degree Connector                   | 4228                | 4228                | 4228                 |
| 8    | Anti-Short Bushing                    | 6304                | 6304                | 6304                 |
| 9    | Pipe Plug                             | 2755                | 2755                | 2755                 |
| 10   | Magnetic Pipe Plug                    | 30160               | 30160               | 30160                |

Power Unit Assembly Part Numbers:

| Part No. | HP     | RPM     | Phase        | Hz    | Voltage |
|----------|--------|---------|--------------|-------|---------|
| 3259-52  | 3/4 HP | 348 RPM | Single Phase | 60 Hz | 230     |
| 3259-88  | 3/4 HP | 348 RPM | Single Phase | 50 Hz | 220/380 |
| 3259-104 | 3/4 HP | 348 RPM | Three Phase  | 50 Hz | 220/380 |

**This page for installation notes**



**Made to work.  
Built to last.**

### **Revisions to this Manual**

| <b>Page No.</b> | <b>Description of Change</b> |
|-----------------|------------------------------|
|-----------------|------------------------------|

**Contact your nearby Chore-Time distributor or representative for additional parts and information.**

**CTB Inc.  
P.O. Box 2000 • Milford, Indiana 46542-2000 • U.S.A.  
Phone (219) 658-4101 • Fax (877) 730-8825  
E-Mail: [ctb@ctbinc.com](mailto:ctb@ctbinc.com) • Internet: <http://www.ctbinc.com>**

**Printed in the U.S.A.**