



## 47729 Dead End Screener Installation Instructions

### Introduction

The 47729 Dead End Screener is used to prevent foreign material from entering cockerel scales, batch mixtures, etc.

The screen openings in the Dead End Screener are only large enough for ground feed to pass through. All other foreign material such as shelled corn, cobs, stones, etc., are carried through the screener to the control unit. A funnel and flexible tubing is supplied to route the foreign materials into a container (not supplied)

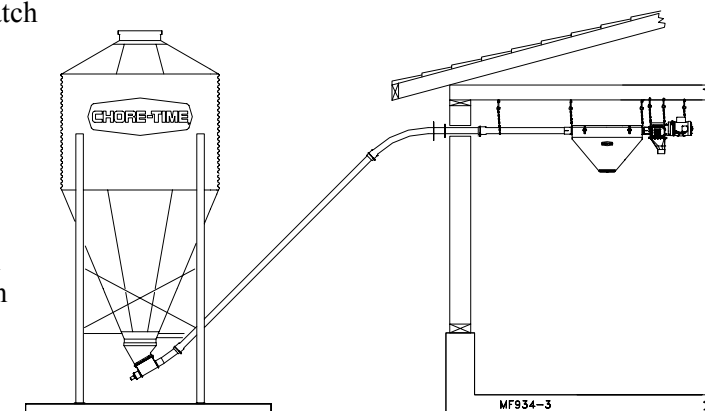


Figure 1

Minimal assembly is required to install the Dead End Screener.

1. Secure the Control Unit Anchor to the outgoing end of the screener, as shown in Figure 2, using 5/16-18 hardware. A rubber seal is supplied to be installed between the screener body and the Control Unit Anchor. The seal should be installed as shown in figure 2
2. Slide the Drive Assembly over the output shaft on the gearhead. See Figure 2. Secure the Driver Assembly to the shaft using the 5/16-18 socket head cap screws.
3. Secure the Power Unit to the Control Unit, using (4) 5/16-18x5/8" screws, as shown in figure 2.
4. Install the Funnel on the bottom of the Control Unit, using (4) 1/4-20 screws and nuts. Install the Control Unit on to the Control Units Anchor and secure with heavy duty band clamp.
5. Provide adequate support to both sides of the Screener and the Power Unit. See Figure 1. The Tube Anchor Weldment (located on the incoming end of the Screener) is designed with slots to facilitate suspensions chain or cable. The outgoing end of the Screener will be supported by the Control Unit suspension system.
6. Install flexible drop tube and/or straight drop tube section to the funnel to route screenings into a container.
7. Place the Screener Cover on top of the Screener and secure it in place using over-center clamps.

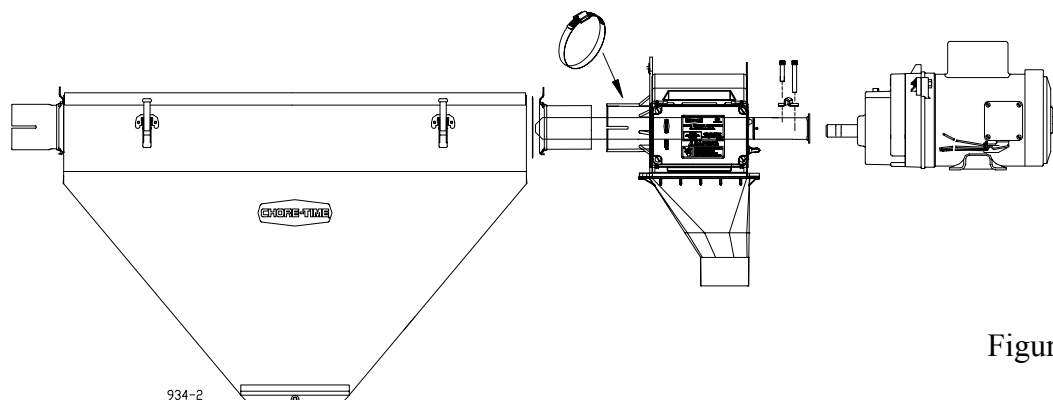


Figure 2

CTB Inc.

P.O. Box 2000 • Milford, Indiana 46542-2000 • U.S.A.

Phone (574) 658-4101 • Fax (877) 730-8825

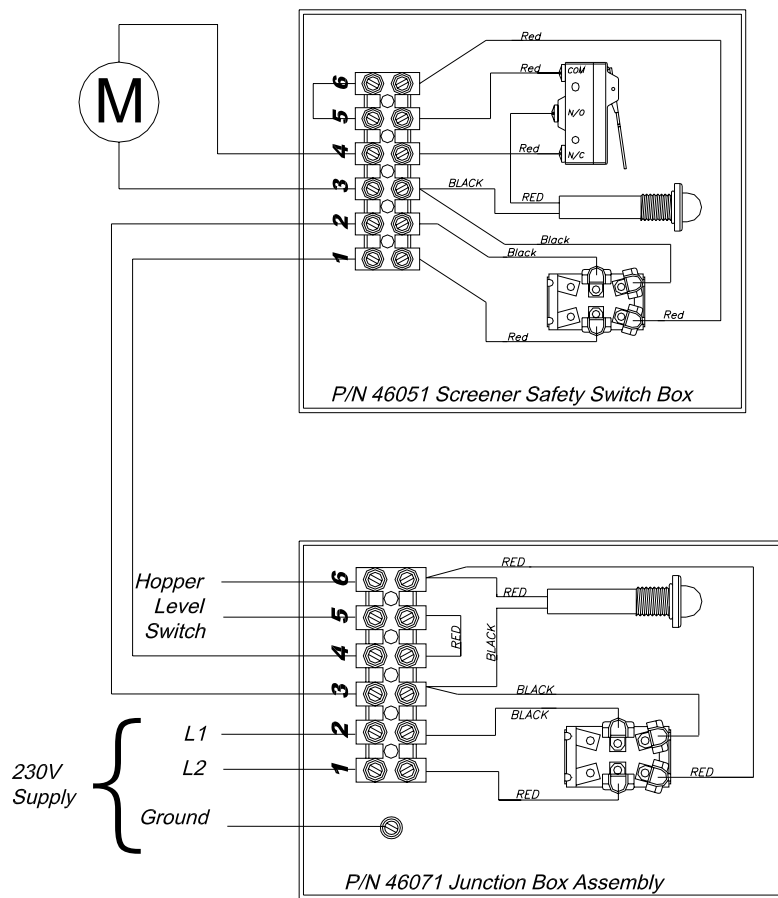
E-Mail: [poultry@choretime.com](mailto:poultry@choretime.com) • Internet: <http://www.choretime.com>

[www.choretime.com](http://www.choretime.com)

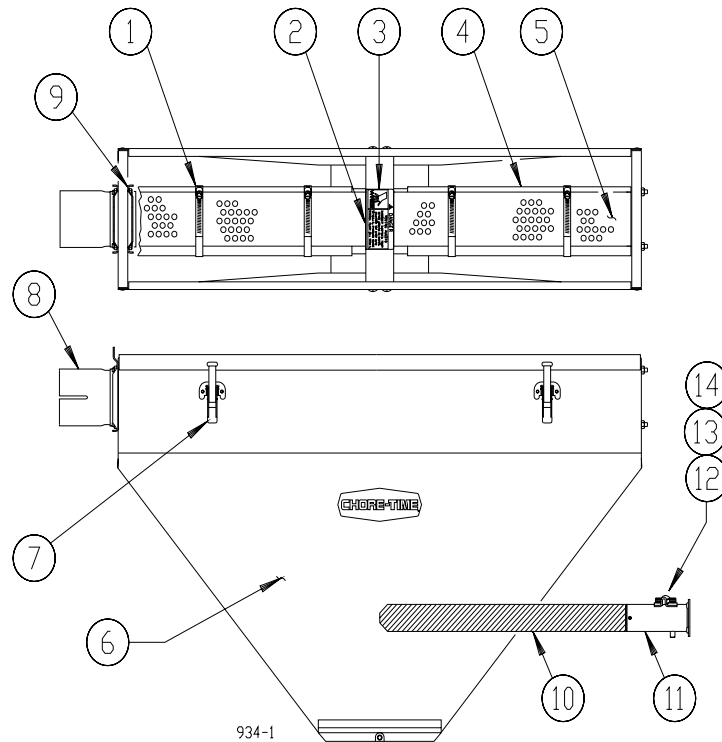
January 2003

MF934B

8. Wire the system according to the diagram below.



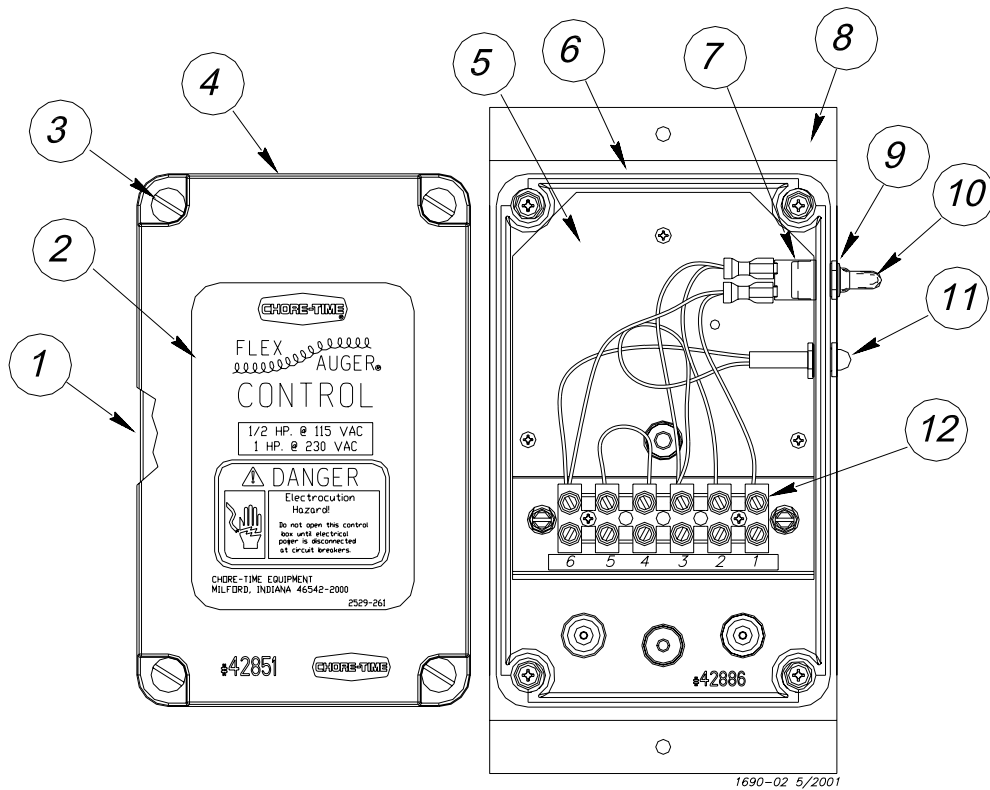
## 47729 Dead End Screener



Ref. Number	Part Number	Description
1	13948	Clamp
2	27101	Brace
3	2527-9	Caution Decal
4	24796	Screen Retainer
5	7436	Screen
6	27092	Body Weldment
7	2536	Over Center Clamp
8	27086	Tube Anchor Weldment
9	22084	Extruded Plate Weldment
10*	47717	Agitator
11*	25705	Driver Weldment
12*	6850-4	5/16-18x2-1/4 Socket HD Fastener
13*	6850-3	5/16-18x1/2 Socket HD Fastener
14*	7703	Anchor Clamp
Not Shown	4873	Seal
Not Shown	46800-23	Screener Control Unit
Not Shown	46071	Junction Box

\* These components may be ordered as an assembly under Chore-Time Number 47722.

## Junction Box Assembly Part Number 46071



Item	Description	Part No.
1	Gasket	42854
2	Control Decal	2529-261
3	Plastic Screw	42849
4	Electric Box Cover	42851
5	Mount Panel	46072
6	Machined Electrical Box	43883-1
7	Toggle Switch	7767
8	Box Mount Panel	46069
9	Shoulder Nut	13407
10	Switch Boot	13406
11	Pilot Light	46047
12	6 Position Terminal Block	34925-6