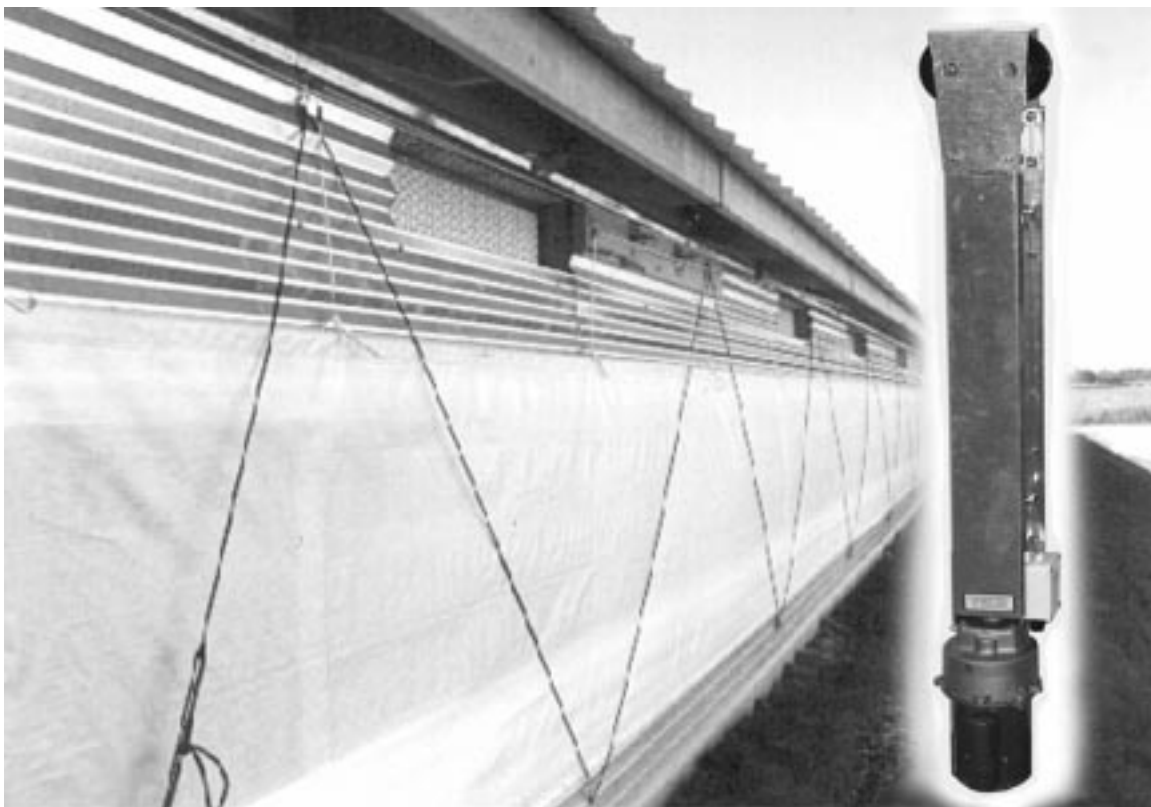


LINEAR-LIFT™

Installation & Operator's Instruction Manual



1251-42 10/98

Chore-Time Warranty

Chore-Time Equipment ("Chore-Time") warrants each new Chore-Time product manufactured by it to be free from defects in material or workmanship for one year from and after the date of initial installation by or for the original purchaser. If such a defect is found by the Manufacturer to exist within the one-year period, the Manufacturer will, at its option, (a) repair or replace such product free of charge, F.O.B. the factory of manufacture, or (b) refund to the original purchaser the original purchase price, in lieu of such repair or replacement. Labor costs associated with the replacement or repair of the product are not covered by the Manufacturer.

Conditions and Limitations

1. The product must be installed by and operated in accordance with the instructions published by the **Manufacturer or Warranty will be void.**
2. Warranty is void if **all components** of the LINEAR-LIFT Unit are not original equipment supplied by the **Manufacturer.**
3. This product must be purchased from and installed by an authorized distributor or certified representative thereof or the Warranty will be void.
4. Malfunctions or failure resulting from misuse, abuse, negligence, alteration, accident, or lack of proper maintenance shall not be considered defects under the Warranty.
5. This Warranty applies only to systems for the care of poultry and livestock. Other applications in industry or commerce are not covered by this Warranty.

The **Manufacturer** shall not be liable for any **Consequential or Special Damage** which any purchaser may suffer or claim to suffer as a result of any defect in the product. **"Consequential" or "Special Damages"** *as used herein include, but are not limited to, lost or damaged products or goods, costs of transportation, lost sales, lost orders, lost income, increased overhead, labor and incidental costs and operational inefficiencies.*

THIS WARRANTY CONSTITUTES THE MANUFACTURER'S ENTIRE AND SOLE WARRANTY AND THIS MANUFACTURER EXPRESSLY DISCLAIMS ANY AND ALL OTHER WARRANTIES, INCLUDING, BUT NOT LIMITED TO, EXPRESS AND IMPLIED WARRANTIES AS TO MERCHANTABILITY, FITNESS FOR PARTICULAR PURPOSES SOLD AND DESCRIPTION OR QUALITY OF THE PRODUCT FURNISHED HEREUNDER.

Chore-Time Distributors are not authorized to modify or extend the terms and conditions of this Warranty in any manner or to offer or grant any other warranties for Chore-Time products in addition to those terms expressly stated above. An officer of CTB, Inc. must authorize any exceptions to this Warranty in writing. The Manufacturer reserves the right to change models and specifications at any time without notice or obligation to improve previous models.

Effective: **April 2002**

Chore-Time Equipment
A Division of CTB, Inc.
P.O. Box 2000 • Milford, Indiana 46542-2000 • U.S.A.
Phone (574) 658-4101 • Fax (877) 730-8825
Email: ctb@ctbinc.com • Internet: <http://www.ctbinc.com>

Thank You

The employees of Chore-Time Equipment would like to thank you for your recent Chore-Time purchase. If a problem should arise, your Chore-Time distributor can supply the necessary information to help you.

Contents

Topic	Page	User
Chore-Time Warranty	2	C,D
Support Information	5	
Distributor and Installer Information	5	
General	5	C,I
About This Manual	6	C,I
Safety Information	6	C,I
Safety–Alert Symbol	6	
Understanding Signal Words	6	
Follow Safety Instructions	7	
Decal Descriptions	7	
DANGER: Electrical Hazard	7	
Introduction and Layout Diagrams	8	C,I
Tools Required	8	
Cable/Pulley Combinations	8	
Available Sizes and Speed of Operation	9	
Standard LINEAR-LIFT- (36298-Series) Part Numbers	9	
LINEAR-LIFT with Potentiometer- (42490-Series) Part Numbers	9	
LINEAR-LIFT with Chain- (44462-Series)Part Numbers	9	
LINEAR-LIFT 3rd Switch (37550-Series) Part Numbers	9	
LINEAR-LIFT Installation	10	C,I
Ceiling Mount LINEAR–LIFT Installation	11	
Side Wall LINEAR–LIFT Installation	12	
Side Wall LINEAR–LIFT Installation	12	
Alternative Vent Plug Locations for Various LINEAR-LIFT Mountings	13	
Oil Recommendation	14	
Grease Recommendation	14	
LINEAR-LIFT Stop Switch Adjustment	15	C,I
2-Switch LINEAR-LIFT	15	
3-Switch Model LINEAR-LIFT	16	
Wiring Diagrams	17	C,I
Standard 2-Switch LINEAR-LIFT Limit Switch and Schematic Diagrams	17	
3-Switch LINEAR-LIFT Limit Switch Schematic Diagram	17	
Linear-Lift with Potentiometer Model (42490-Series) Wiring and Mounting:	18	
Potentiometer Connection and Operation	18	
Linear Lift Switch Assemblies	19	C,I
LINEAR-LIFT Switch Assembly #38904	19	
LINEAR-LIFT Switch Assembly for Potentiometer #42772	20	
Optional Pulleys and Accessories	21	C,I

Contents - continued

Topic	Page	User
LINEAR-LIFT Parts Listings	22	C,D,I
Standard 2 Switch LINEAR-LIFT (42490-Series w/Potentiometer)	22	
3-Switch LINEAR-LIFT (37550-Series)	24	
LINEAR-LIFT with Chain Drive Option (44462-Series)	26	
LINEAR-LIFT with Chain: Assembly Part Numbers	27	

General

Support Information

The Chore-Time LINEAR-LIFT™ is designed to open curtains or inlet doors. Using this equipment for any other purpose or in a way not within the operating recommendations specified in this manual will void the warranty and may cause personal injury.

This manual is designed to provide comprehensive planning, installation, safety, operation, and parts listing information. The Table of Contents provides a convenient overview of the information in this manual. The Table of Contents also specifies which pages contain information for the sales personnel, installer, and consumer (end user).

Distributor and Installer Information

Please fill in the following information about your Product.
Keep this manual in a clean, dry place for future reference.

Distributor's Name _____

Distributor's Address _____

Distributor's Phone _____ **Date of Purchase** _____

Installer's Name _____

Installer's Address _____

Installer's Phone _____ **Date of Installation** _____

System Specifications _____

About This Manual

The intent of this manual is to help you in two ways. One is to follow step-by-step in the order of assembly of your product. The other way is for easy reference if you have questions in a particular area.

Important ! Read ALL instructions carefully before starting construction.

Important ! Pay particular attention to all SAFETY information.

- *Metric measurements are shown in millimeters and in brackets, unless otherwise specified. " " equals inches and " ' " equals feet in English measurements.*

Examples:

1" [25.4]

4' [1 219]



- Optional equipment contains necessary instructions for assembly or operation.
- Major changes from the last printing will be listed on the back cover.
- This Planning Symbol is used in areas where planning needs to take place before construction continues.
- Very small numbers near an illustration (*i.e.*, 1257-48) are identification of the graphic, not a part number.

Safety Information

Caution, Warning and Danger Decals have been placed on the equipment to warn of potentially dangerous situations. Care should be taken to keep this information intact and easy to read at all times. Replace missing or damaged safety decals immediately.

Using the equipment for purposes other than specified in this manual may cause personal injury and/or damage to the equipment.



Safety-Alert Symbol

This is a safety-alert symbol. When you see this symbol on your equipment, be alert to the potential for personal injury. This equipment is designed to be installed and operated as safely as possible...however, hazards do exist.

Understanding Signal Words

Signal words are used in conjunction with the safety-alert symbol to identify the severity of the warning.



DANGER indicates an imminently hazardous situation which, if not avoided, **WILL** result in death or serious injury.



WARNING indicates a potentially hazardous situation which, if not avoided, **COULD** result in death or serious injury.



CAUTION indicates a hazardous situation which, if not avoided, **MAY** result in minor or moderate injury.

Safety Information

Follow Safety Instructions

Carefully read all safety messages in this manual and on your equipment safety signs. Follow recommended precautions and safe operating practices.

Keep safety signs in good condition. Replace missing or damaged safety signs.

Decal Descriptions

DANGER: Electrical Hazard

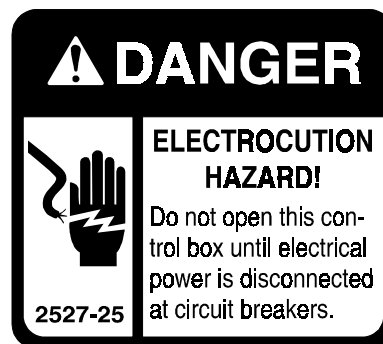
Disconnect electrical power before inspecting or servicing equipment unless maintenance instructions specifically state otherwise.

Ground all electrical equipment for safety.

All electrical wiring must be done by a qualified electrician in accordance with local and national electric codes.

Ground all non-current carrying metal parts to guard against electrical shock.

With the exception of motor overload protection, electrical disconnects and over current protection are not supplied with the equipment



Introduction and Layout Diagrams

The **LINEAR-LIFT** is designed to open and close inlet curtains or baffle boards. It may be wired into the ventilation control (i.e. Static Pressure Inlet Control, Chore-Tronics, Super Selector, etc.)

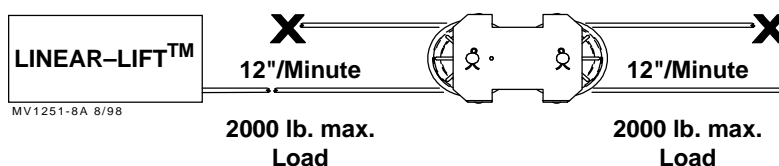
Tools Required

- | | |
|---------------------------------|----------------------|
| 1 5/16" Nut Driver | 4 Wire Strippers |
| 2 Drive Ratchet and 1/2" Socket | 5 Electrical Wire |
| 3 Wire Cutters | 6 3/32" Allen Wrench |

Cable/Pulley Combinations

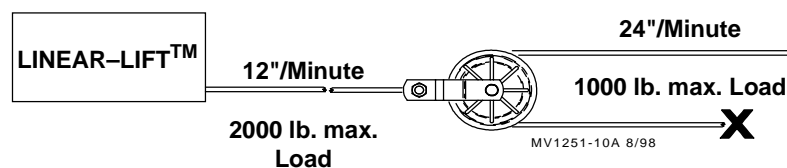
Same Speed

(Ratio 1:1)



Speed Up

(Ratio 1:2)



Slow Down

(Ratio 2:1)

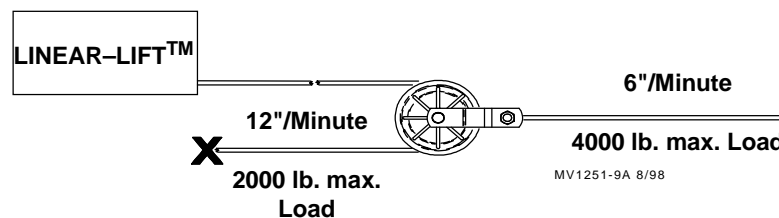


Figure 1. Cable/Pulley Combination

Available Sizes and Speed of Operation

- The LINEAR-LIFT without potentiometer is available in 22", 32", 44", and 62" strokes.
- The LINEAR-LIFT with Potentiometer model is available in 17", 27", 39", and 57" strokes.
- The LINEAR-LIFT three switch model is available in 32", 44", and 62" strokes.
- All models have a lifting speed of 12" per minute.

Standard LINEAR-LIFT- (36298-Series) Part Numbers

	230 Volt		115 Volt	
	With Pulley	No Pulley	With Pulley	No Pulley
22" Stroke	36298-26	36298-261	36298-2601	36298-2611
32" Stroke	36298-36	36298-361	36298-3601	36298-3611
44" Stroke	36298-48	36298-481	36298-4801	36298-4811
62" Stroke	36298-66	36298-661	36298-6601	36298-6611

LINEAR-LIFT with Potentiometer- (42490-Series) Part Numbers

	With Pulley	No Pulley
17" Stroke	42490-26	42490-261
27" Stroke	42490-36	42490-361
39" Stroke	42490-48	42490-481
57" Stroke	42490-66	42490-661

LINEAR-LIFT with Chain- (44462-Series) Part Numbers

	230 Volt
	With Sprocket
22" Stroke	44462-26
32" Stroke	44462-36

LINEAR-LIFT 3rd Switch (37550-Series) Part Numbers

	With Pulley	No Pulley	115 Volt
32" Stroke	37550-36	37550-361	37550-3601
44" Stroke	37550-48	37550-481	37550-7801
62" Stroke	37550-66	37550-661	

LINEAR-LIFT Installation

The LINEAR-LIFT may be mounted to the wall or ceiling, using (8) 3/8" Lag Screws (included in the Hardware Package). **See Figures 2 and 3.**

1. Route the cable as required to the main curtain or baffle board cable.
2. Mount the LINEAR-LIFT to the wall or ceiling using all of the hardware provided.

Item	Description
1	Cable Routing
2	LINEAR-LIFT
3	Mounting Hole Locations

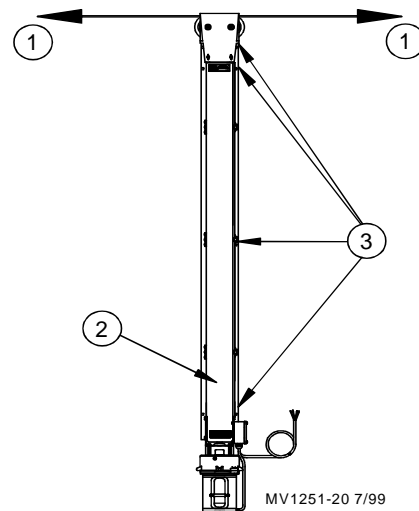


Figure 2. LINEAR-LIFT Installation (vertical wall view)

Note: It may be necessary to provide a recess in the mounting surface for clearance of the 90° Elbow and vent plug, or by mounting the LINEAR-LIFT on 2 x 10 lumber as shown for vent plug clearance. (See Figure 3)

Item	Description	Part No.
1	Power Unit	Varies
2	LINEAR-LIFT	Varies
3	2"x10" Board	
4	90° Elbow	15405
5	Vent Plug	3523

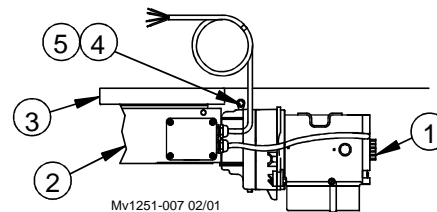
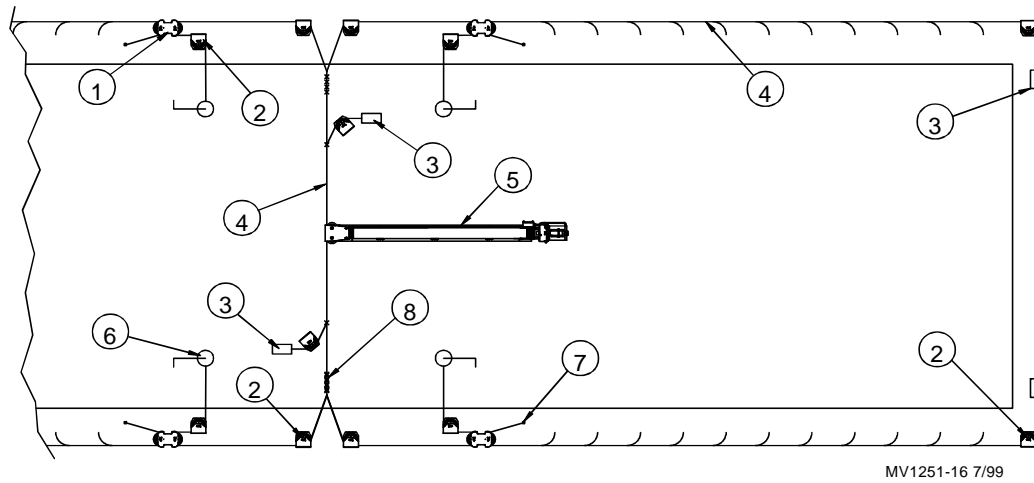


Figure 3. LINEAR-LIFT Installation (ceiling mount view)

Important ! Ceiling Installation

If the LINEAR-LIFT is to be installed on the ceiling, the vent plug must be installed next to the ceiling (upward) once mounted. Replace the vent plug with the solid steel plug from the opposite side of the gear housing. Refill oil in the gear housing before operating. (See Figure 3) For additional information, **See Page 13.**

Ceiling Mount LINEAR-LIFT Installation

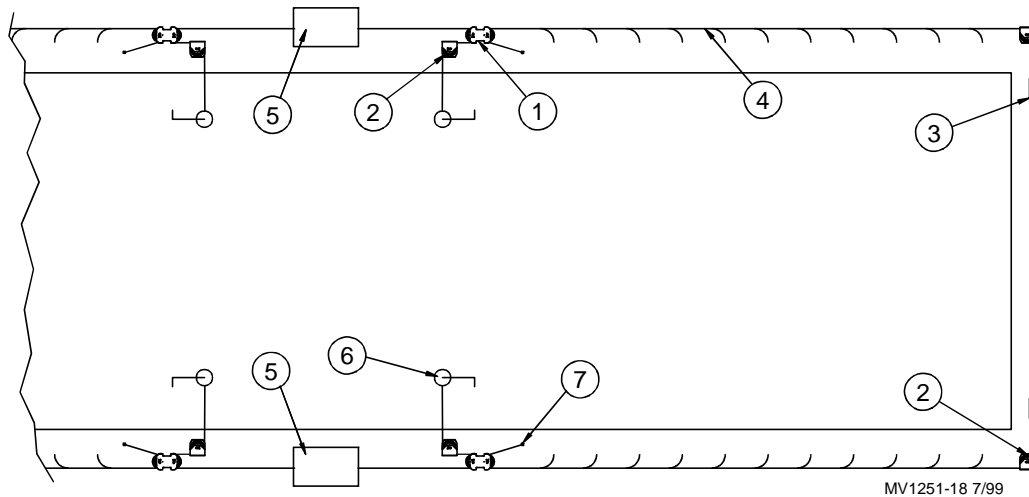


MV1251-16 7/99

Item	Description	Part No.
1	Pulley Assembly NY 3.5	27772
2	Single Pulley Assembly	27301
3	Anti-Slack Weight or Spring	41143
4	Curtain Cable (7 * 19-3/16" Dia.) Recommended	13976
5	LINEAR-LIFT	Varies
6	Hand Winch	1212
	Winch Mounting Assembly	1193
7	Tie Down	
8	(3) Cable Clamp	732

Figure 4. Ceiling Mounted LINEAR-LIFT pulling (2) curtains (top view) with a 1:1 double-back cable arrangement

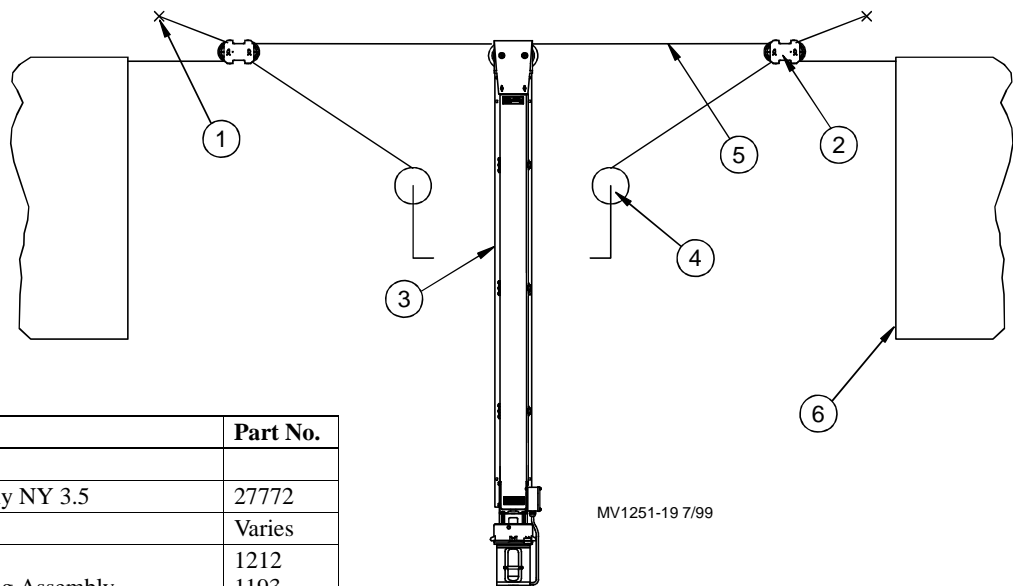
Side Wall LINEAR-LIFT Installation



Item	Description	Part No.
1	Pulley Assembly NY 3.5	27772
2	Single Pulley Assembly	27301
3	Anti Slack Weight or Spring	41143
4	Curtain Cable (7 * 19-3/16" Dia.) Recommended	13976
5	LINEAR-LIFT	Varies
6	Hand Winch Winch Mounting Assembly	1212 1193
7	Tie Down	

Figure 5. Side Wall LINEAR-LIFT with a 1:1 double-back cable arrangement (top view)

Side Wall LINEAR-LIFT Installation

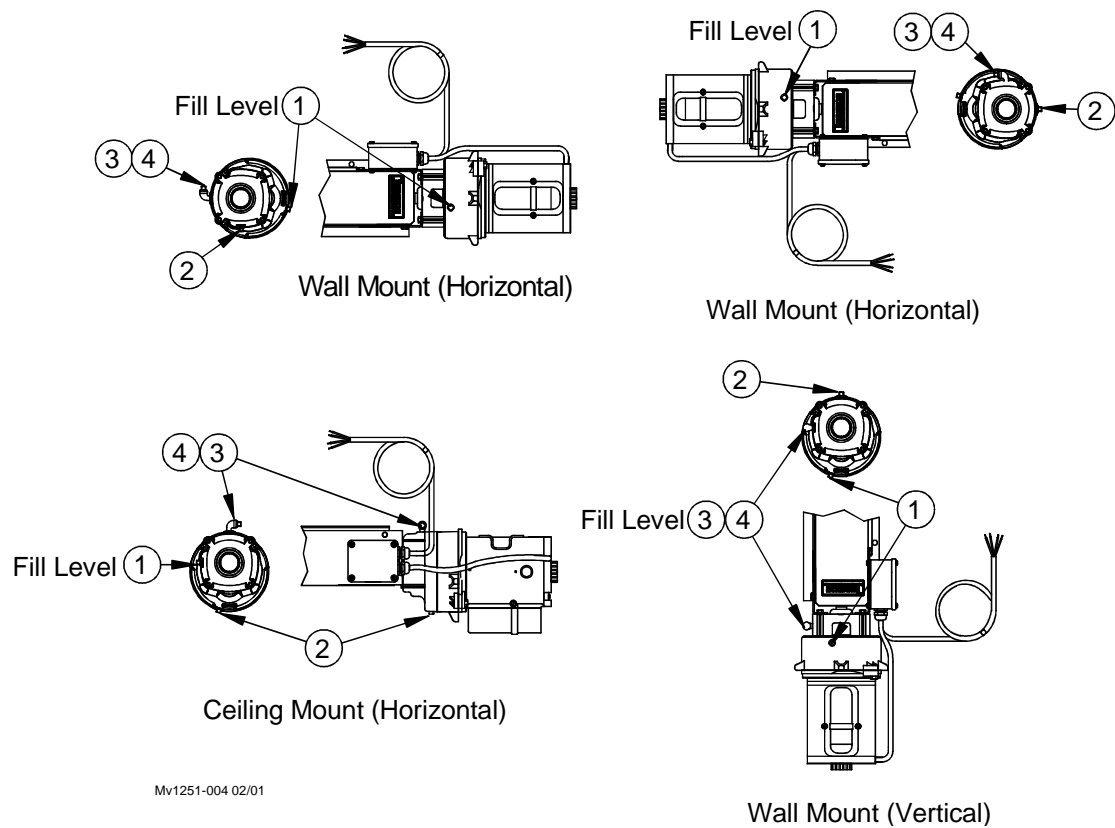


Item	Description	Part No.
1	Tie Down	
2	Pulley Assembly NY 3.5	27772
3	LINEAR-LIFT	Varies
4	Hand Winch Winch Mounting Assembly	1212 1193
5	Curtain Cable (7 * 19-3/16" Dia.) Recommended	13976
6	Curtain	

Figure 6. Side Wall LINEAR-LIFT with a 1:1 double-back cable arrangement (front-view)

Alternative Vent Plug Locations for Various LINEAR-LIFT Mountings

Refer to the four mounting diagrams shown (Figure 7) to determine the correct Vent Plug location.



Item	Description	Part No.
1	1/4 Solid Pipe Plug	2755
2	1/4 Pipe Plug (Magnetic)	30160
3	1/4 Vent Plug	3523
4	90° Elbow	15405

Figure 7. Vent Plug and Fill Level Locations

Oil Recommendation

The gearhead contains 13.5 oz. of SAE 40 oil.

For horizontal and ceiling mounted Linear-Lifts, fill the oil to the fill hole. For vertical mounted Linear-Lifts fill the oil to approximately 2 ounces above the fill hole. See **Figure 7** for oil fill locations.

Grease Recommendation

The LINEAR-LIFT is fully greased at the factory. However, for maximum life, Chore-Time strongly recommends greasing the LINEAR-LIFT at each grease fitting monthly.

Recommended Grease: Sunoco Construction Grease, Mobile CMP Grease, or similar water-resistant with moly, extreme pressure (E.P.) grease. (See **Figure 8**)

Important ! Grease Fittings on the Bronze Machined Nut and Pulleys are not labyrinth sealed. Apply grease liberally. Also apply grease to Threaded Rod across full length.

Important ! Grease monthly for maximum life.

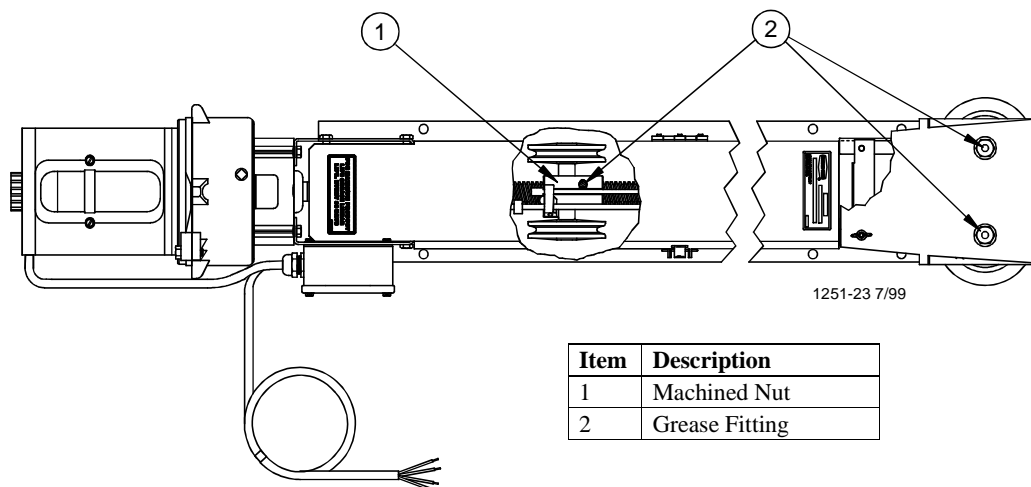


Figure 8. LINEAR-LIFT Critical Grease Fitting Locations (horizontal wall mount view)

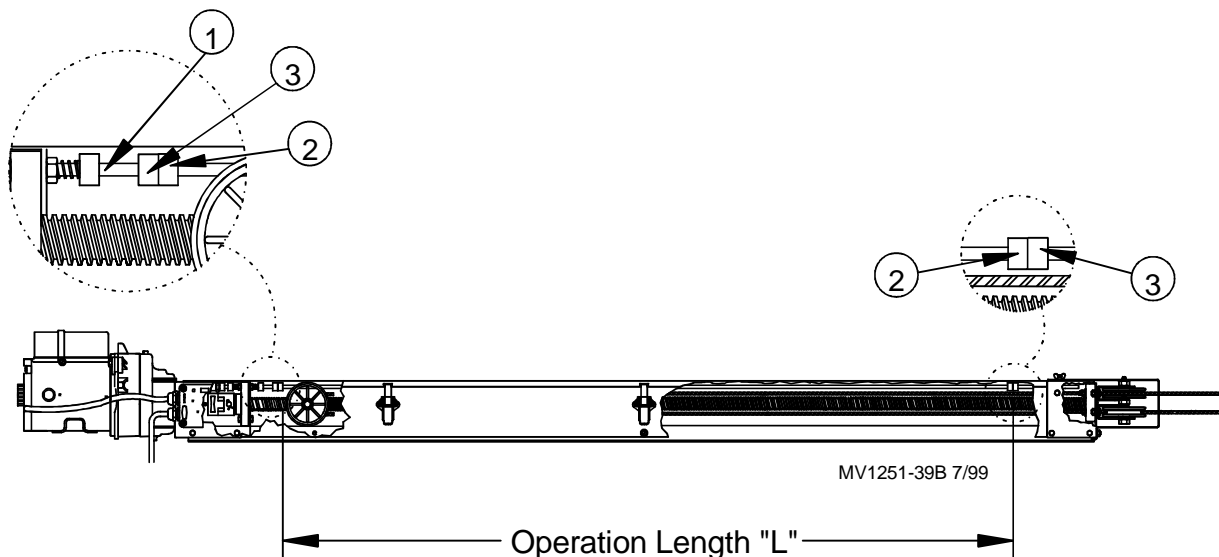
LINEAR-LIFT Stop Switch Adjustment

2-Switch LINEAR-LIFT

The LINEAR-LIFT has two adjustable stops (Set Collars) that may be moved to accommodate a variety of curtain opening sizes.

A 3/32" Allen wrench is required to loosen the set screw on the Set Collar (**Items 2 and 3, Figure 9**). Slide the Set Collar(s) on the Switch Rod to the desired limits of Inlet operation or Curtain travel (**Figure 9**). Two Collars are supplied for each limit of travel for best grip and shut off.

Important ! Do not adjust the four Collars on the rod nearest the Motor. These are set at the factory for switch operation and do not require moving.



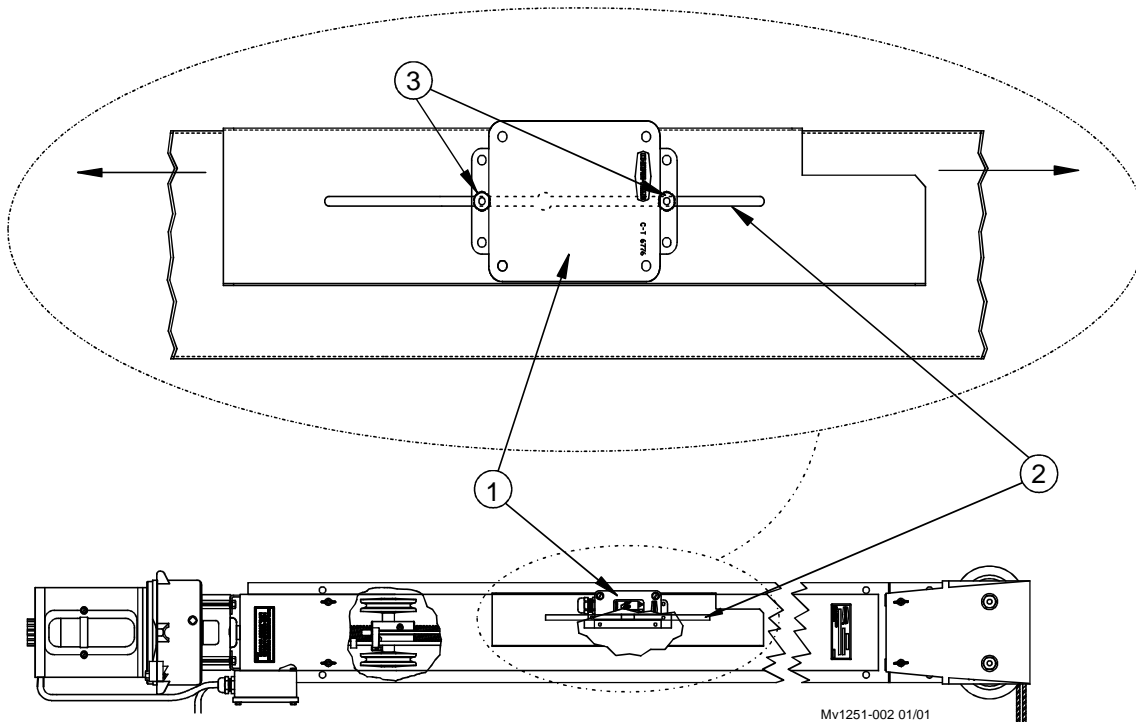
For Operation Length "L", see pg. 9 for available models

Item	Description
1	Switch Rod
2	Adjustable Stops (set collar)
3	Second Limit Stops (Adjust with Item 2)

Figure 9. LINEAR-LIFT Adjustment (side view)

3-Switch Model LINEAR-LIFT

The 3 switch model LINEAR-LIFT is available for use with the Chore-Time Super-Selector model Environmental Control; or where a "near closed" signal is required. The 3rd Switch provides a signal to the Control to indicate when a sidewall Curtain is nearly closed (3" to 10" adjustment range) while running the curtain closed. The switch can be adjusted with a 3/8" wrench or nut-driver on the front cover of the LINEAR-LIFT unit. (See Figure 10)



Item	Description	Part No.
1	3rd Switch Assembly	38904
2	Slot for Third Switch Adjustment	
3	Third Switch Adjustment Kepnuts	27725

Figure 10. LINEAR-LIFT 3 Switch Model

Wiring Diagrams

Standard 2-Switch LINEAR-LIFT Limit Switch and Schematic Diagram for; Standard, 3-Switch & Chain Models

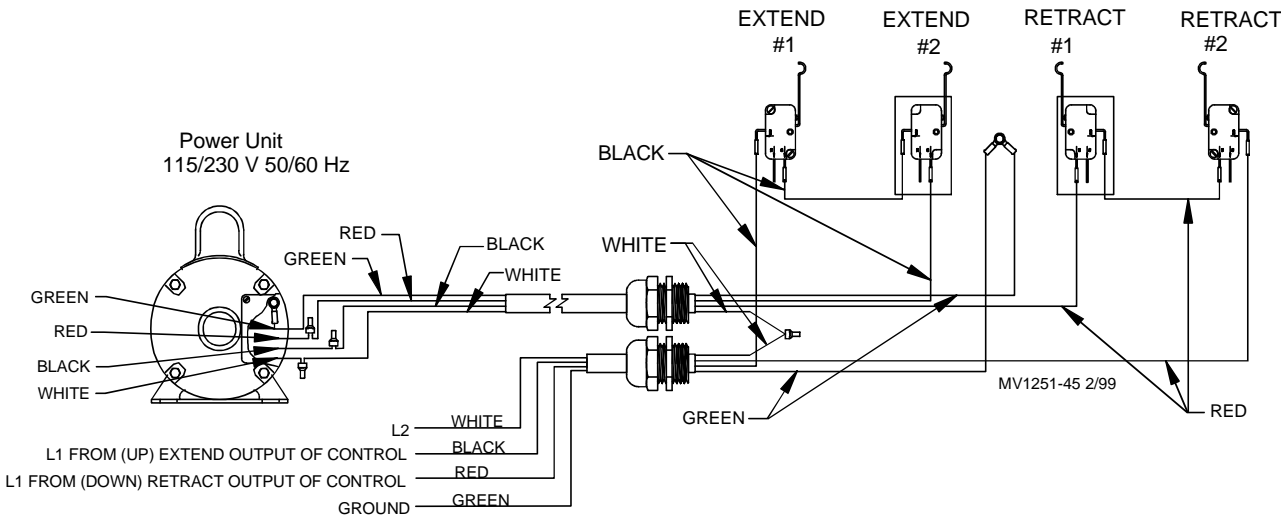


Figure 11. 2-Switch Wiring Diagram

3-Switch LINEAR-LIFT Limit Switch Schematic Diagram

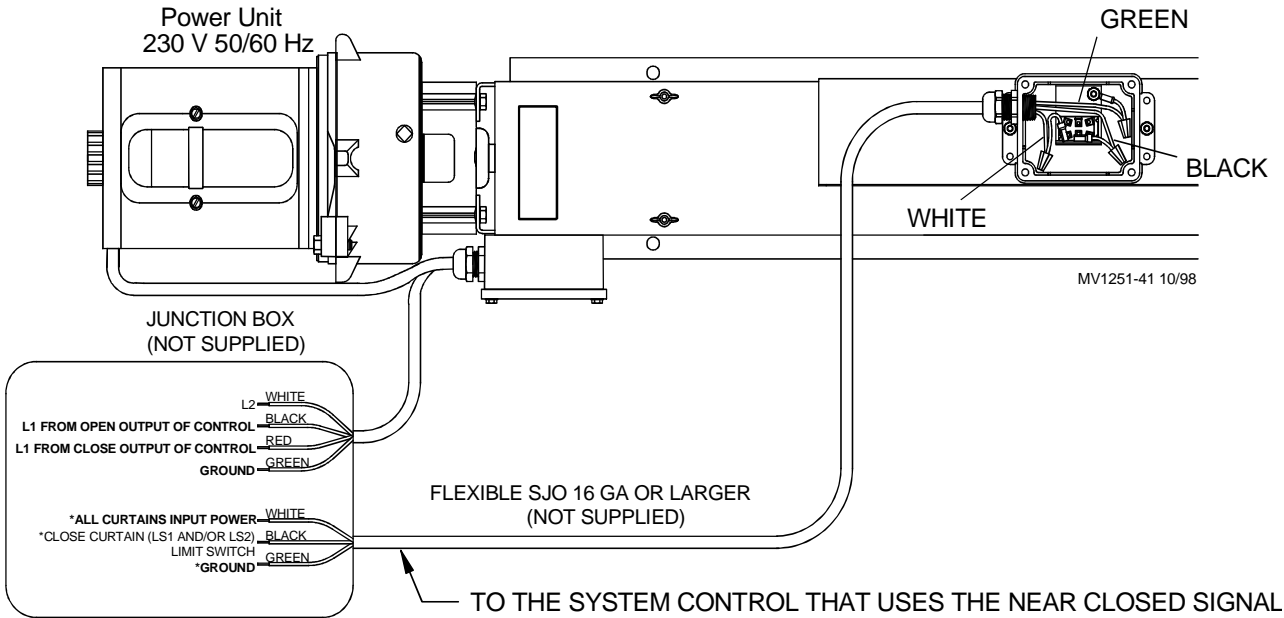


Figure 12. 3-Switch Wiring Diagram

Linear-Lift with Potentiometer Model (42490-Series)

Wiring and Mounting:

The correct wiring of the Potentiometer leads for the Control signal depends on the mounting and application of the Linear-Lift. **Figure 13** shows how the unit can be used either to close the attachment by retracting cable into the unit or by extending cable out of the unit. The proper Lead connections are shown at the bottom of **Figure 13**.

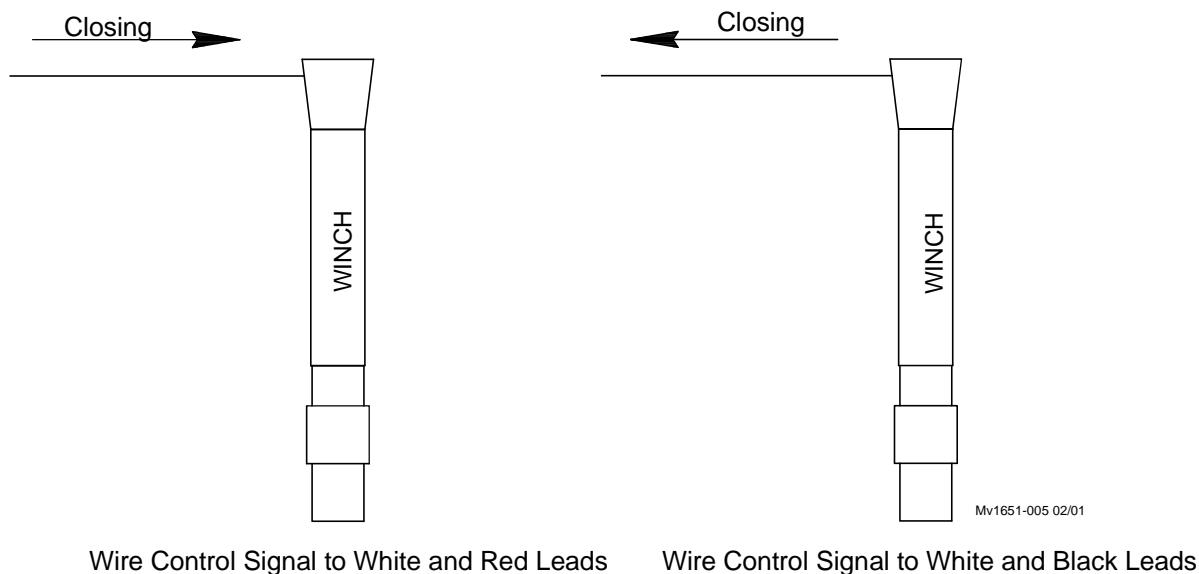
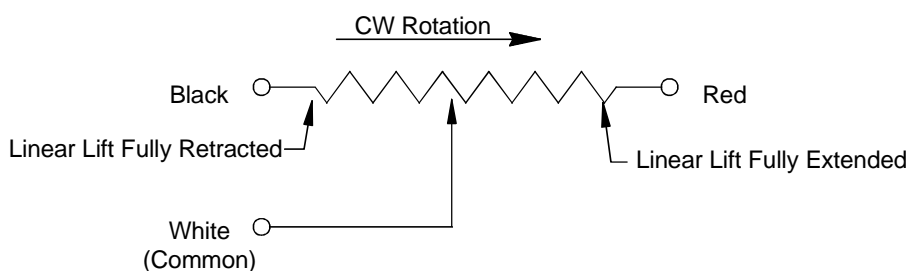


Figure 13. Potentiometer Wiring Leads

Potentiometer Connection and Operation

Figure 14 shows the schematic of the potentiometer and which color lines are associated with rotation, direction, and position of the Bronze Nut.



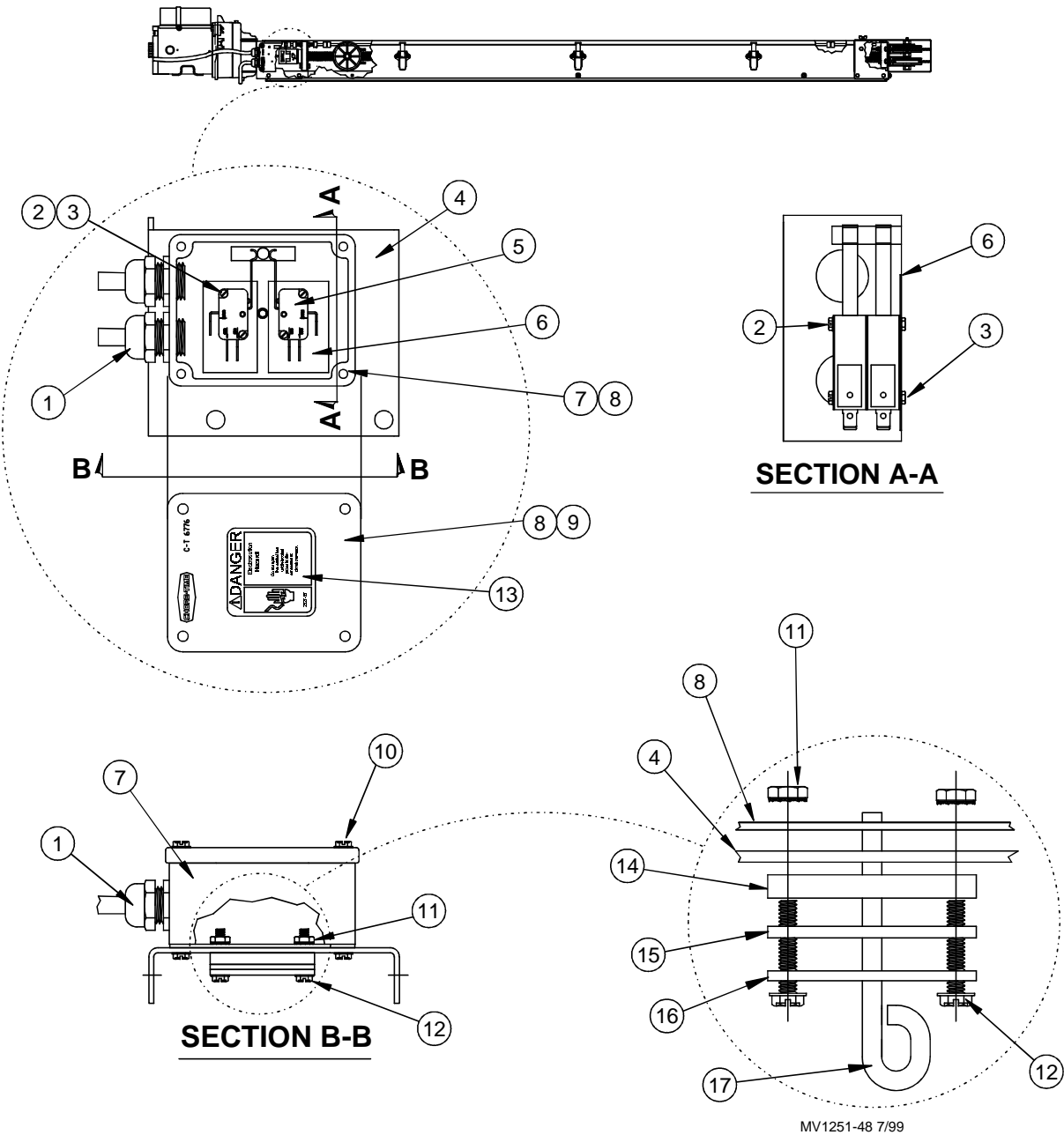
- Note:
- 1) RESISTANCE ACROSS WHITE & RED IS MAXIMUM WHEN FULLY RETRACTED
 - 2) RESISTANCE ACROSS WHITE AND BLACK IS MAXIMUM WHEN FULLY EXTENDED
 - 3) POT ROTATION IS DEFINED AS THE TURNING DIRECTION WHEN VIEWED FROM THE SHAFT SIDE OF THE POT
 - 4) CHORE-TRONICS CONTROLLERS READ INCREASING RESISTANCE = CURTAIN CLOSING
 - 5) POTENTIOMETER IS A 10-TURN DEVICE THAT READS FROM 0 TO 10 KOHM

Mv1251-006 02/01

Figure 14. Connection and Operation

Linear Lift Switch Assemblies

LINEAR-LIFT Switch Assembly #38904

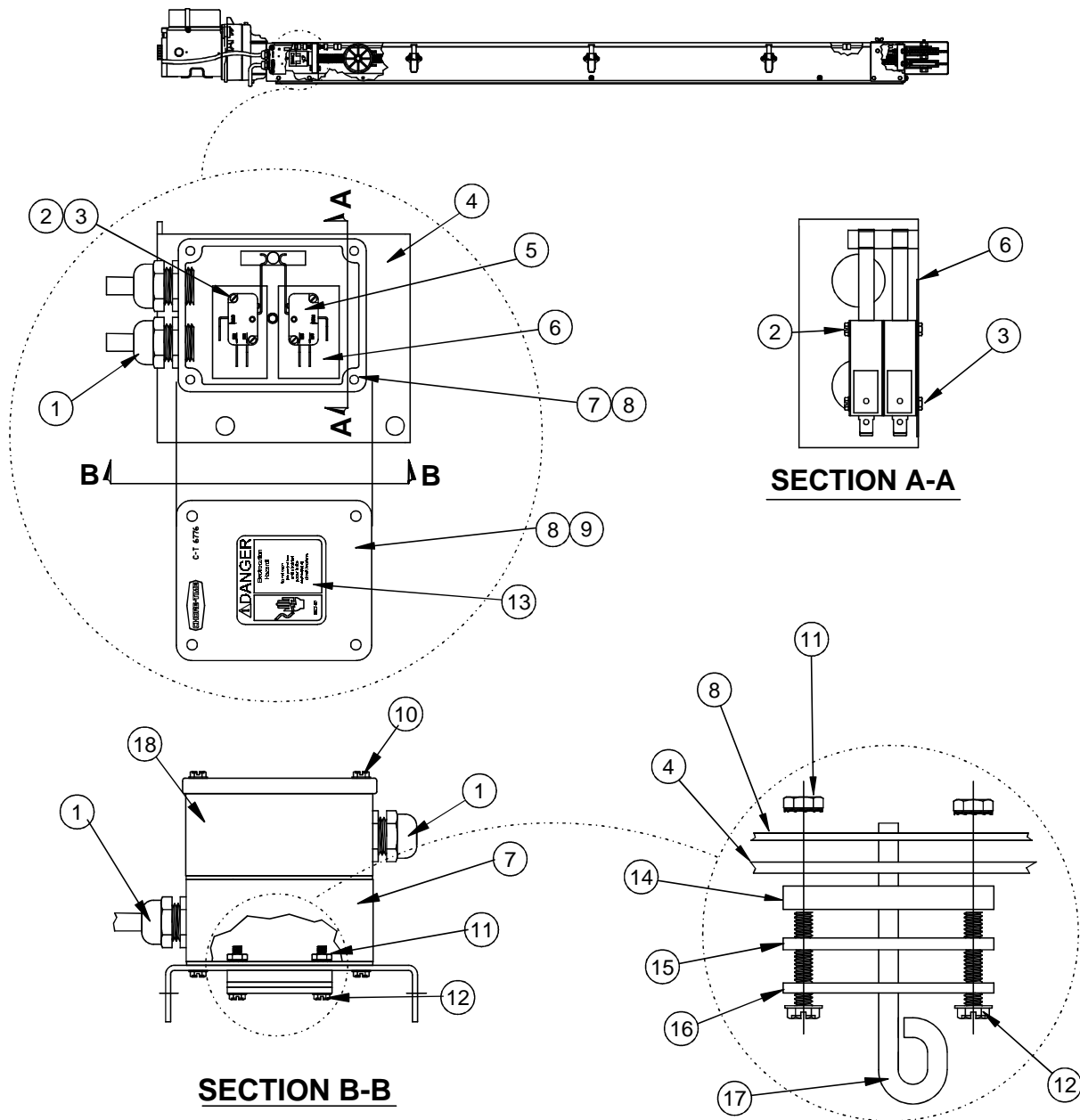


Item	Description	Part No.
1	Liquid Tight Connector	23779
2	Pan Head Screw 4-40x1	41822
3	Hex Nut 4-40	3511
4	LINEAR-LIFT Motor Brkt Rh	38806
5	Switch, Micro	6049
6	Switch Insulation	1907-8
7	Terminal Box	36334
8	Gasket	6777
9	Switch Box Cover	6776

Item	Description	Part No.
10	Twin Helix Screw #10x.75	6980
11	Kepnut #10-24	27725
12	Hex Screw Sltd. #10-24	4416-6
13	Danger Decal	2527-35
14	Poly Switch Plate	38802
15	Neoprene Switch Plate	38801
16	Switch Plate	38803
17	Switch Hook	38804

Figure15. 38904 Switch Assembly

LINEAR-LIFT Switch Assembly for Potentiometer #42772



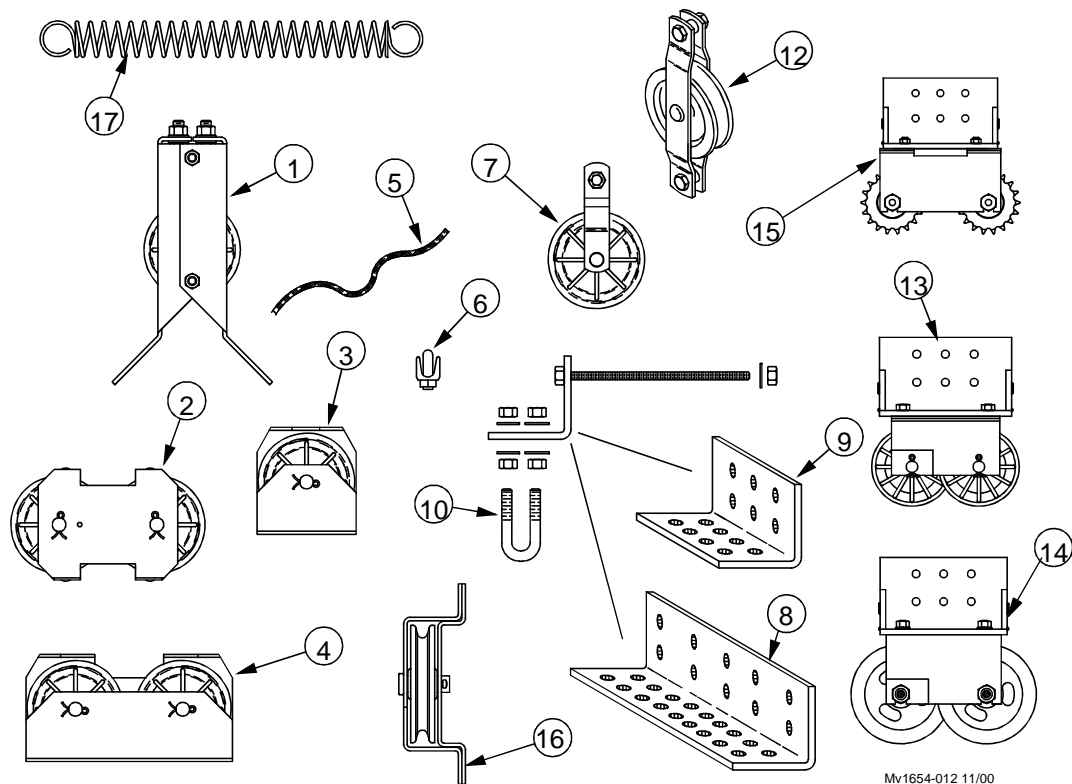
MV1251-48 7/99

Item	Description	Part No.
1	Liquid Tight Connector	23779
2	Pan Head Screw 4-40x1	41822
3	Hex Nut 4-40	3511
4	LINEAR-LIFT Motor Brkt	38806
5	Switch, Micro	6049
6	Switch Insulation	1907-8
7	Terminal Box	36334
8	Gasket	6777
9	Switch Box Cover	6776

Item	Description	Part No.
10	Twin Helix Screw #10x.75	6980
11	Kepnut #10-24	27725
12	Hex Screw Sltd. #10-24	4416-6
13	Danger Decal	2527-35
14	Poly Switch Plate	38802
15	Neoprene Plate	38801
16	Switch Plate	38803
17	Switch Hook	38804
18	Terminal Assembly Box	36653

Figure 16. 42772 Switch Assembly for Potentiometer

Optional Pulleys and Accessories



Mv1654-012 11/00

Item	Description	Part No.
1	Corner Pulley Assembly	35597
2	Double Pulley Assembly	27772
3	Pulley Kit	27301
4	Center Pulley Assembly	27302
5	3/16" Cable (150')—7 * 19 3/32" Cable—galvanized	13976 4973
6	3/16" Cable Clamp	732
7	Pulley Assembly	2500
8	Double Pulley Mounting Brkt.	35404
9	Single Pulley Mounting Brkt.	35405
10	3/16-18x7" U Bolt with Nuts	35602
11	5/16-18x7" Bolt	4412-20
12	Double Eye Pulley	2501
13	3.5" Double Pulley Assembly	43272
14	4.5" Double Pulley Assembly	46018
15	Double Sprocket Assembly	44520
16	Pulley Assembly	28429
17	Inlet Spring	41143

Figure 17. Pulley Options

Items 7, 8, 10, & 11 with a quantity of 2 each—may be ordered as a Double Pulley Bracket Kit. Part No. 35600.

Items 7, 9, 10, & 11 with a quantity of 1 each—may be ordered as a Single Pulley Bracket Kit. Part No. 35598.

LINEAR-LIFT Parts Listings

Standard 2 Switch LINEAR-LIFT (42490-Series w/Potentiometer)

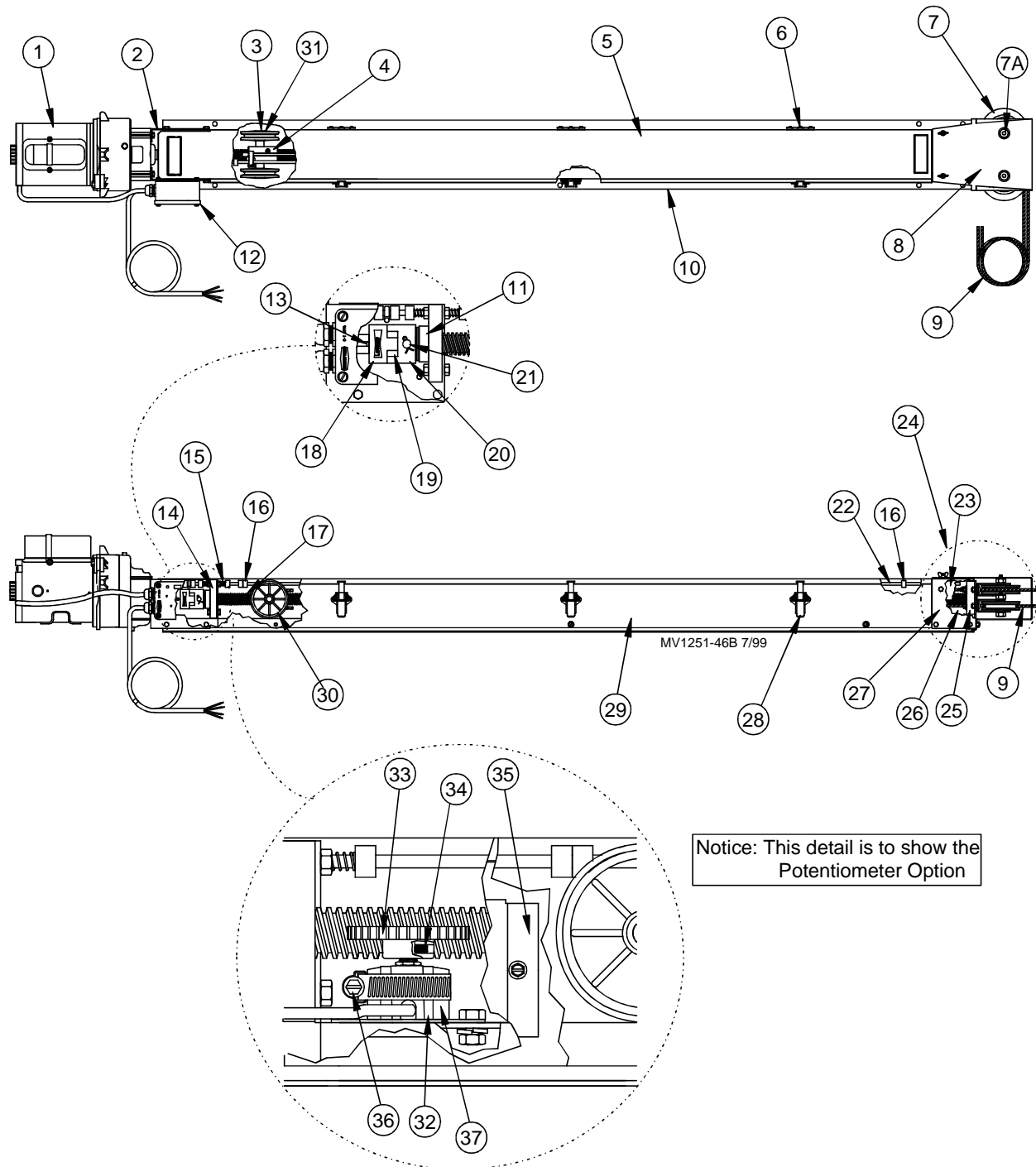


Figure 18. 2-Switch LINEAR-LIFT with Potentiometer Option

LINEAR-LIFT Part Numbers

Item	Description	Part No.
1	Power Unit Assembly 230 Volt 115 Volt	36370 42780
2	Motor Bracket	35573
3	Machined Pulley Wheel	41540
4	Machined Nut	41957
5	Weather Cover	41535
6	SS Butt Hinge	41526
7	Pulley Assembly w/ Bearing	42498
7A	Pulley Shaft	43112
8	Pulley Cover	41953
9	25 ft. Cable with Stop	47658
10	Mounting Base 26" 36" 48" 66"	41527 41528 41430 41529
11	Thrust Bearing	36397
12*	Switch Assembly 2-Switch Potentiometer	38904 42772
13	3/16 x 1 Square Key	2112-1
14	Thrust Bracket	35566
15	Compression Spring 2-Switch Potentiometer	7132 42047
16	Set Collar	41857
17	Threaded Shaft 26" 36" 48" 66"	35945-2 35945-4 35945-3 35945-1

Item	Description	Part Numbers	Potentiometer Part Numbers
18	Flexible Coupling	36363-2	
19	"SOX" Spider Spacer	36333	
20	Machined Flexible Coupling	35944	
21	5/16x2 Clevis pin	36466-1	
22	Switch Rod 26" 36" 48" 66"	E1401-31.75 E1401-41.75 E1401-53.75 E1401-71.75	
23	Rod Support	42061	
24	Pulley Assembly	38905	
25	Thread Pilot	35569	
26	Pullet Reinforcement Bracket	41701	
27	Thread Bracket	35570	
28	Over Center Clamp	2536	
29	Side Panel 26" 36" 48" 66"	41530 41531 41409 41532	42489 42493 42494 42495
30	Pulley Wheel	2503	
31	Retaining Ring	41525	
32	Potentiometer Holding Bracket		42487
33	Potentiometer Gear 26"- 48" 66"		42624 41825
34	Set Screw # 8-32		42728
35	Potentiometer Cover		42486
36	Hose Clamp		3527
37	Potentiometer LINEAR-LIFT Assy.		42488

*See page 19 or 20 for exploded view of parts.

Standard 2-Switch LINEAR-LIFT Complete Assembly Part Numbers

	230 Volt		115 Volt	
	With Pulley	No Pulley	With Pulley	No Pulley
22" Stroke	36298-26	36298-261	36298-2601	36298-2611
32" Stroke	36298-36	36298-361	36298-3601	36298-3611
44" Stroke	36298-48	36298-481	36298-4801	36298-4811
62" Stroke	36298-66	36298-661	36298-6601	36298-6611

LINEAR-LIFT with Potentiometer Complete Assembly Part Numbers

	With Pulley	No Pulley
17" Stroke	42490-26	42490-261
27" Stroke	42490-36	42490-361
39" Stroke	42490-48	42490-481
57" Stroke	42490-66	42490-661

3-Switch LINEAR-LIFT (37550-Series)

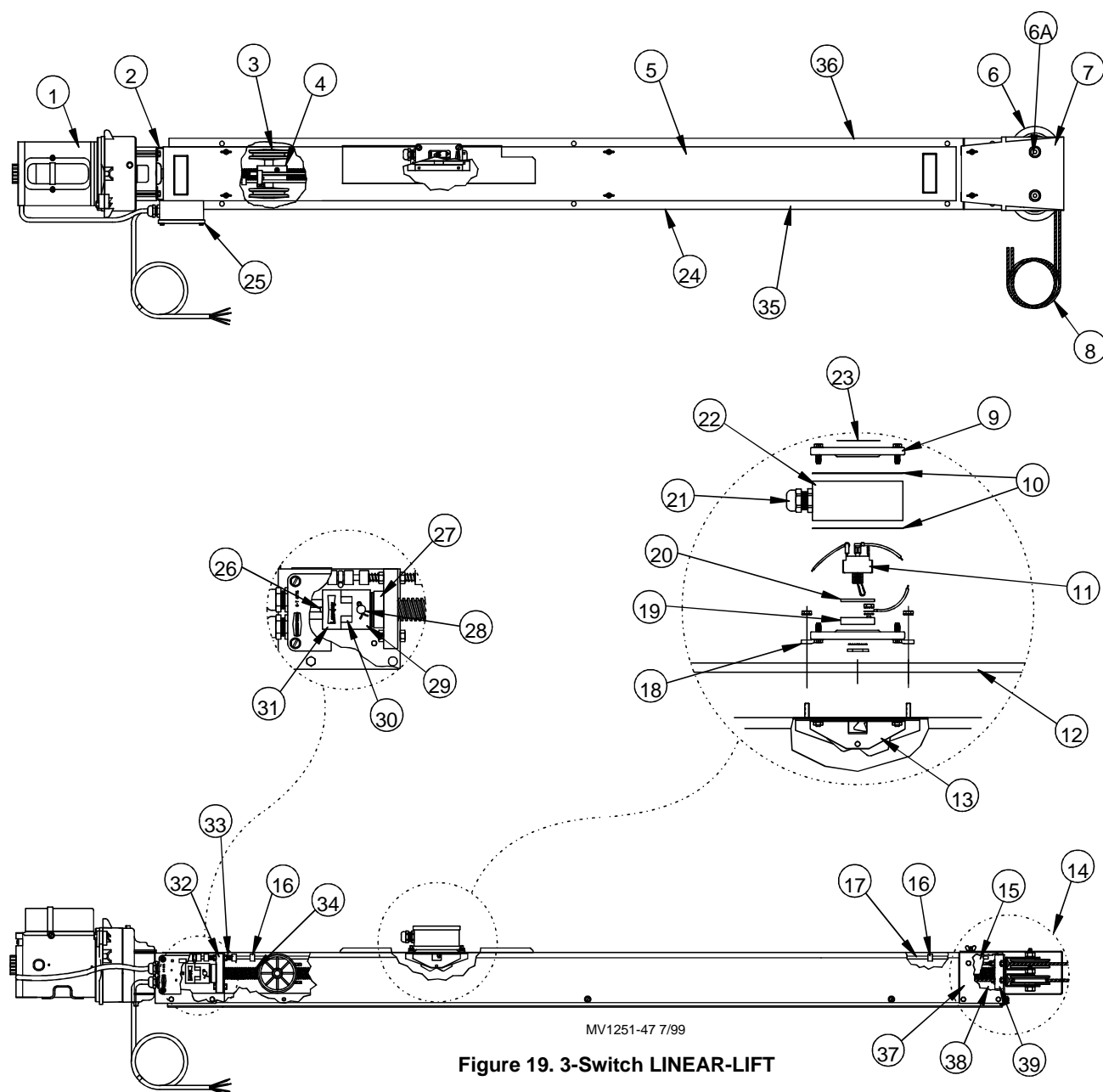


Figure 19. 3-Switch LINEAR-LIFT

3-Switch LINEAR-LIFT Part Numbers

Item	Description	Part No.
1	Power Unit Assembly 230 Volt 115 Volt	36370 42780
2	Motor Bracket	35573
3	Pulley Wheel	2503
4	Machined Nut	41957
5	Cover 36" 48" 66"	37151-4 37151-3 37151-1
6	Pulley Assembly w/ Bearing	42498
6A	Pulley Shaft	43112
7	Pulley Cover	41953
8	25' Cable with Stop	47658
9	Switch Box Cover	6776
10	Gasket	6777
11	Toggle Switch	6014
12	Toggle Switch Cover Plate	36913
13	Rocker Assembly	37549
14	Pulley Assembly	38905
15	Rod Support	42061
16	Set Collar	41857
17	Switch Rod 36" 48" 66"	E1401-41.75 E1401-53.75 E1401-71.75
18	Toggle Switch Box Base	36910
19	Toggle Switch Plate	36907
20	Toggle Switch Spacer	36908
21	Liquid Tight Connector	23779

*See page 19 for exploded view of parts.

Item	Description	Part No.
22	Terminal Box	36334-3
23	Danger Decal	2527-35
24	Mounting Base 36" 48" 66"	39554 36771 35563
25*	Switch Assembly	38904
26	3/16 x 1 Square Key	2112-1
27	Thrust Bearing	36397
28	Clevis Pin	36466-1
29	Machined Flexible Coupling	35944
30	"SOX" Spider Spacer	36333
31	Flexible Coupling	36363-2
32	Thrust Bracket	35566
33	Compression Spring	42047
34	Threaded Shaft 36" 48" 66"	35945-4 35945-3 35945-1
35	Right Hand Panel 36" 48" 66"	39555-2 37487-2 35577-2
36	Left Hand Panel 36" 48" 66"	39555-1 37487-1 35577-1
37	Thread Bracket	35570
38	Pulley Reinforcement Bracket	41701
39	Thread Pilot	35569

3-Switch LINEAR-LIFT Complete Assembly Part Numbers

	230 Volt		115 Volt
	With Pulley	No Pulley	
32" Stroke	37550-36	37550-361	37550-3601
44" Stroke	37550-48	37550-481	37550-4801
62" Stroke	37550-66	37550-661	

LINEAR-LIFT with Chain Drive Option (44462-Series)

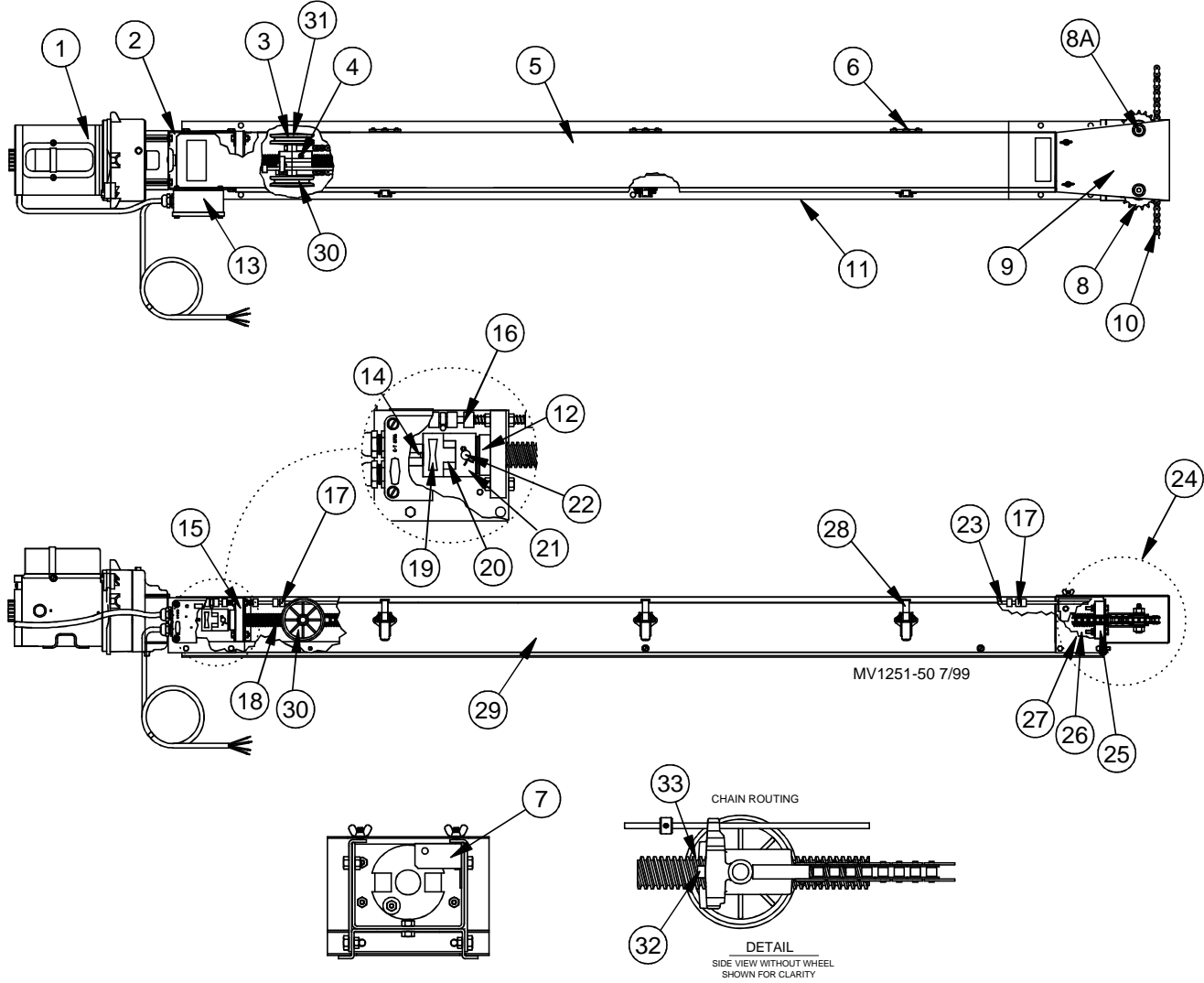


Figure 20. Chain Drive LINEAR-LIFT

LINEAR-LIFT with Chain Drive Option Part Numbers

Item	Description	Part No.
1	Power Unit Assembly 115 Volt 230 Volt	42780 36370
2	Motor Bracket	35573
3	Machined Pulley Wheel	41540
4	Machined Nut	41957
5	Weather Cover 26" 36"	41533 41534
6	SS Butt Hinge	41526
7	Rod Support	42061
8	Sprocket w/ Bearing	42498
8A	Sprocket Shaft	43112
9	Sprocket Cover	44418
10	Drive Chain (#40 Roller) 26" 36"	21045-14 21045-15
11	Mounting Base 26" 36"	41527 41528
12	Thrust Bearing	36397
13*	Switch Assembly	38904
14	3/16 x 1 Square Key	2112-1

Item	Description	Part No.
15	Thrust Bracket	35566
16	Compression Spring	42047
17	Set Collar	41857
18	Threaded Shaft 26" 36"	35945-2 35945-4
19	Flexible Coupling	36363-2
20	"SOX" Spider Spacer	36333
21	Machined Flexible Coupling	35944
22	5/16x2 Clevis pin	36466-1
23	Switch Rod 26" 36"	E1401-31.75 E1401-41.75
24	Sprocket Assembly	44454
25	Thread Pilot	4404-19
26	Pulley Reinforcement Bracket	41701
27	Thread Bracket	44414
28	Over Center Clamp	2536
29	Side Panel 26" 36"	41530 41531
30	Pulley Wheel	2503
31	Retaining Ring	41525
32	1/4-20 x 1-1/2" Socket HD Cap Screw	5083-8
33	1/4-20 x 2-1/4" Socket HD Cap Screw	5083-2

*See page 19 for exploded view of parts.

LINEAR-LIFT with Chain: Assembly Part Numbers

	With Sprocket	Without Sprocket
22" Stroke	44462-26	44462-261
32" Stroke	44462-36	44462-361



**Made to work.
Built to last.**

Revisions to this Manual

Page No.	Description of Change
	Changed length of stroke to actual length. Wiring diagram pg. 17 changed

Contact your nearby Chore-Time distributor or representative for additional parts and information.

**CTB Inc.
P.O. Box 2000 • Milford, Indiana 46542-2000 • U.S.A.
Phone (574) 658-4101 • Fax (877) 730-8825
E-Mail: ctb@ctbinc.com • Internet: <http://www.ctbinc.com>**

Printed in the U.S.A.