



VOLUMATIC™ Water Regulator

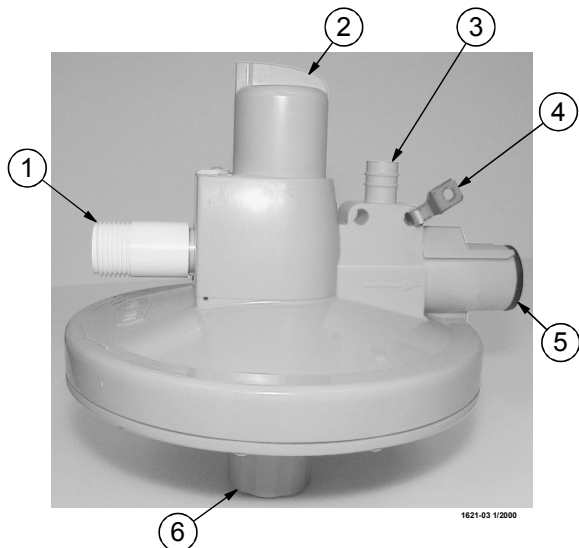
Part Number 42400

Introduction

The Chore-Time VOLUMATIC™ Water Regulator is designed to regulate the water pressure for the Chore-Time Nipple Watering System. There is a version for automatic adjustment of the regulator and a version for manual adjustment of the regulator.

Floor Watering Installation

Glue the included NH Male Adapter Fitting to the Inlet, be careful not to get glue inside the Inlet. Slide the Outlet end over the watering pipe, it helps to wet the black outlet liner, and into the end of the channel. Slide the Regulator Bracket into the hole provided in the regulator and fasten into the hole provided in the channel with the included #10-24 x 5/8" Hex Washer Head Screw and #10-24 Hex Nut. Assemble the Stand Tube to the Stand Tube Outlet by sliding the tube over the barbs and then pushing and twisting the stand tube spring over the tube and barbs. DO NOT USE LUBRICANT.



Item	Description
1	Inlet
2	Selector Knob
3	Stand Tube Outlet
4	Regulator Bracket
5	Outlet
6	Manual Adjustment Knob

Figure 1. VOLUMATIC Watering Regulator (Manual Adjustment Shown)

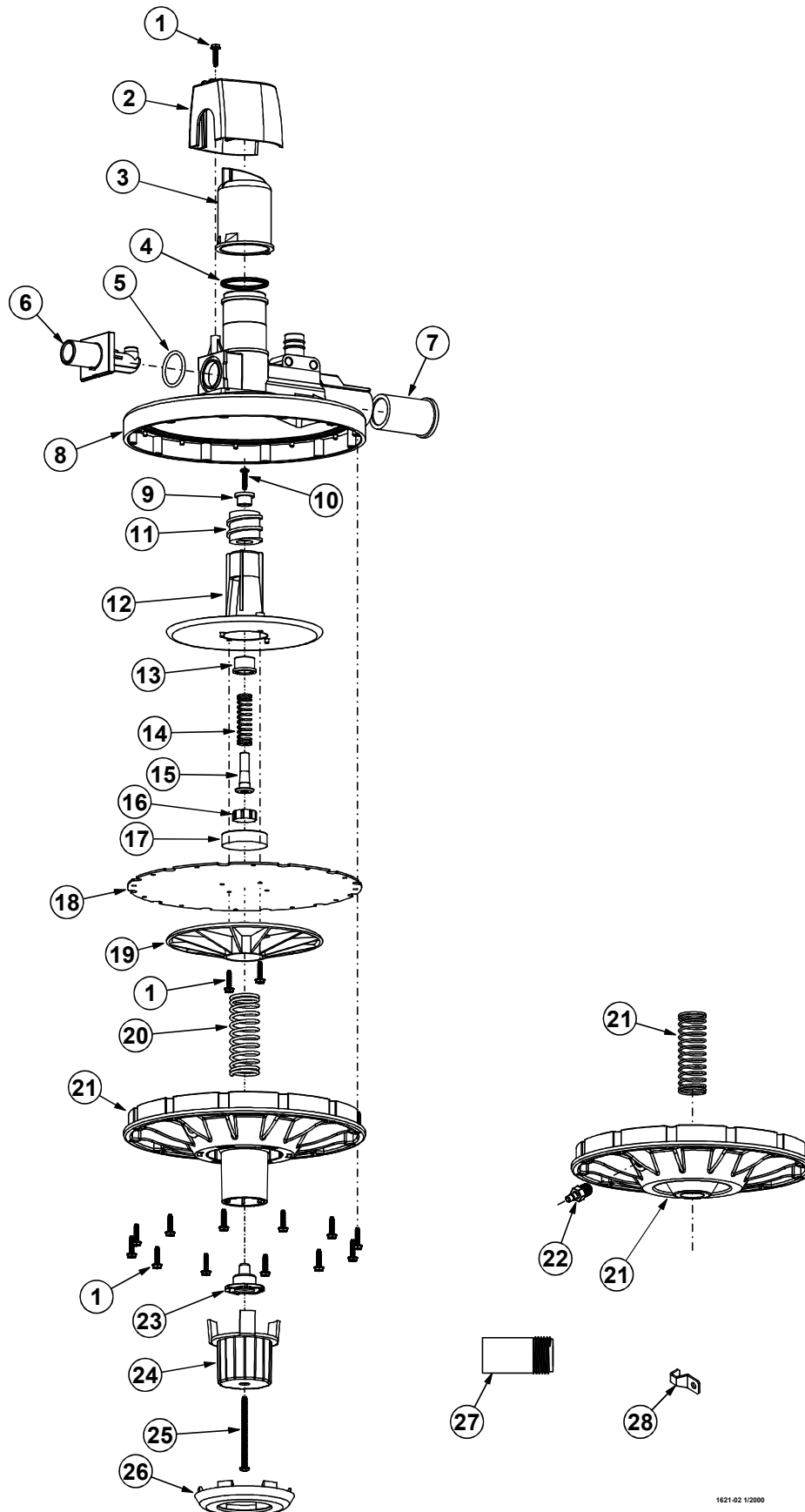
Operation

The VOLUMATIC Water Regulator can be shut off by turning the Selector Knob clockwise until it stops. To turn on the regulator, turn the Selector Knob until it points to the ON position indicated on the regulator. To activate the Flush mode turn the Selector Knob fully counter-clockwise until it stops.

Optimum incoming pressure is 25 - 35 psi [172 - 241 kPa]. The VOLUMATIC Water Regulator can operate at pressures as high as 60 psi [414 kPa] however the life of the regulator seat will be shortened. Also, the supply hose must be high quality and rated for the increased pressure.

When flushing, make sure the outlet line is clear of restrictions. Excessive back pressure can damage the Regulator.

Parts Listing



Item	Description	42400-1 Man Adj with Hose Fitting Part No.	42400-2 Auto Adj with Hose Fitting Part No.	42400-3 Man Adj with Hose Barb Part No.	42400-4 Auto Adj with Hose Fitting Part No.
1	#6-20 x 5/8 Hex Washer Head Screw	44946	44946	44946	44946
2	Shroud	42390	42390	42390	42390
3	Selector Knob	42178	42178	42178	42178
4	1.362 I.D. x .103 Wide O-Ring	42389	42389	42389	42389
5	O-Ring	29118	29118	29118	29118
6	Inlet Orifice	42190	42190	42190	42190
7	Half Liner	36501	36501	36501	36501
8	Regulator Top Half	42174	42174	42174	42174
9	Seat Holder Cap	42176	42176	42176	42176
10	#6-20 x 5/8 Pan Head Screw	42386	42386	42386	42386
11	Barrel	42172	42172	42172	42172
12	Top Diaphragm Plate	42182	42182	42182	42182
13	Seat Holder Sleeve	42187	42187	42187	42187
14	.780 I.D. x 2.8 Long Spring	42392	42392	42392	42392
15	Seat Holder	42189	42189	42189	42189
16	Seat	42188	42188	42188	42188
17	Diaphragm Center Support	42186	42186	42186	42186
18	Diaphragm	42181	42181	42181	42181
19	Diaphragm Plate	42177	42177	42177	42177
20	Spring	42393	42394	42393	42394
21	Regulator Bottom Half	42180	44784	42180	44784
22	Hose Barb	— —	44759	— —	44759
23	Follower	42183	— —	42183	— —
24	Adjustment Knob	42184	— —	42184	— —
25	#8-18 x 2-1/2" Pan Head Screw	42387	— —	42387	— —
26	Knob Retainer	42173	— —	42173	— —
27*	NH Male Adapter Fitting	25098	25098	— —	— —
28*	Regulator Bracket	44866	44866	44866	44866
—	Stand Tube Assembly	39245	39245	39245	39245
—*	#10-24 Hex Nut	313	313	313	313
—*	#10-24 x 5/8 Hex Washer Head Screw	1876	1876	1876	1876

*These parts are included in Part Number 45699 Regulator Parts Package.



**Made to work.
Built to last.**

Revisions to this Manual

Page No.	Description of Change
-----------------	------------------------------

Contact your nearby Chore-Time distributor or representative for additional parts and information.

**CTB Inc.
P.O. Box 2000 • Milford, Indiana 46542-2000 • U.S.A.
Phone (219) 658-4101 • Fax (800) 333-4191
E-Mail: ctb@ctbinc.com • Internet: <http://www.ctbinc.com>**

Printed in the U.S.A.