



Winch Control Instruction

Part Number 34812

The Winch Control is designed to automatically lower feeder or water lines at a preset times on the time clock or manually. The Winch Control is not designed to automatically raise feeder or waterer lines.

Installation:

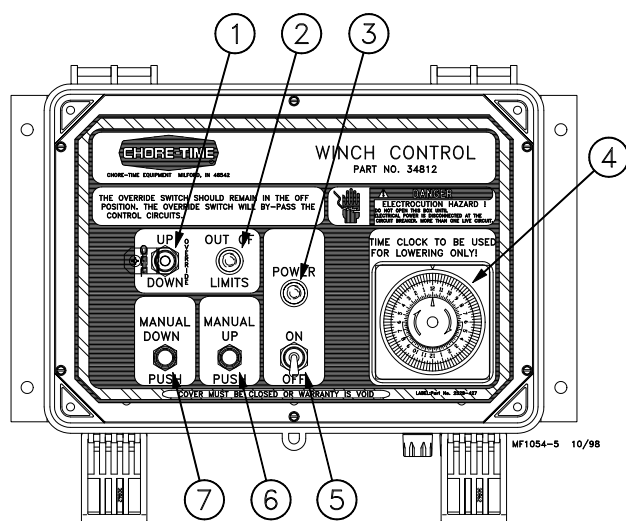
Mount the Winch Control in a convenient location within view of the lines to be lowered.

Install the Tower Switch Assembly as specified in the instructions (MV978) provided with the Tower Switch. The Tower Switch Assembly for the Winch Control uses three individual switches, instead of two.

The upper two switches determine the upper and lower limits of travel. The bottom switch serves as a safety switch.

Set the bottom switches (safety switch) of the Tower Switch approximately 1" (25 mm) below the center switch.

Wire the Winch Control as shown in the wiring diagram in this instruction. NOTE: The Winch Control requires (5) conductors plus ground between the Winch Control and the Motor.



Item	Description
1	Override switch: Used to directly drive the line(s) up or down.
2	Out of Limits Light: Indicates safety switches have been activated.
3	Power Light
4	Time Clock: Indicates time of day and may be set to automatically lower line(s) at a preset time.
5	Power switch
6	Manual Up switch: Used to raise the line(s).
7	Manual Down switch: Used to manually lower the line(s).

Figure 1. Winch Control

Operation:

Set the Time Clock (D) to the appropriate time of day by gently turning the time clock dial.

If the Winch Control is to automatically lower the line, pull one tab at the desired time. If the Winch Control is not to be used automatically, do not pull any tabs.

Flip the POWER switch (E) to the ON position. The pilot light (C) should be lit.

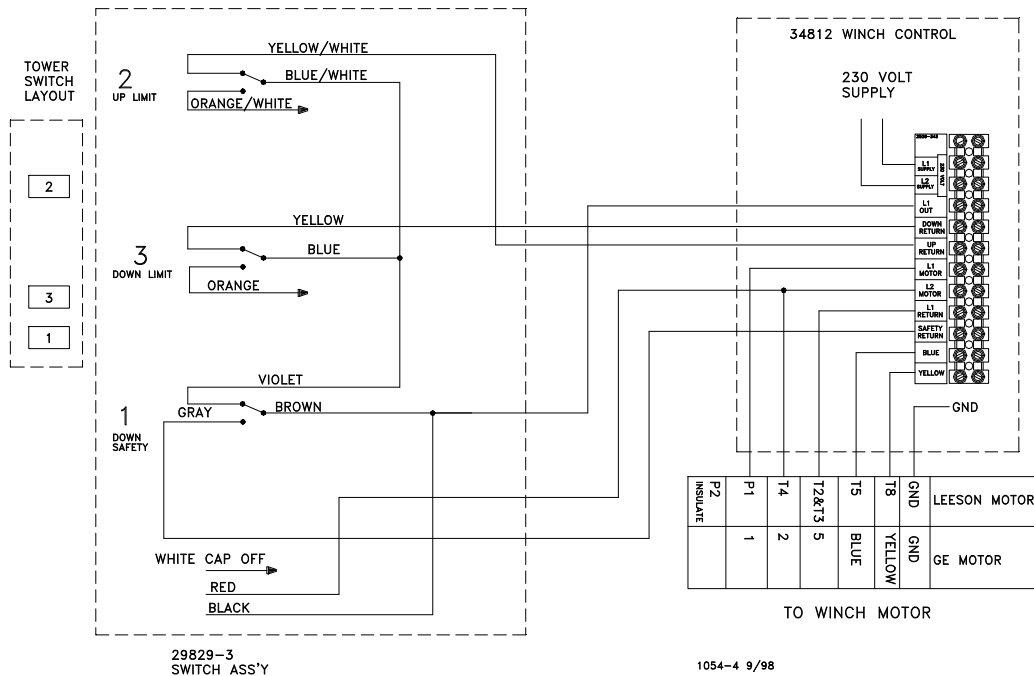
To raise or lower the line, press and hold the appropriate MANUAL UP (F) or MANUAL DOWN (G) button.

If the safety limit switch is activated, the OUT OF LIMITS pilot light will be lit. The Winch Control will not operate after the safety switch has been actuated, until the OVERRIDE switch has been used to bring the line back to within the limits.

CAUTION: The OVERRIDE switch directly drives the line(s) up or down regardless of the Tower Switch settings. USE THE OVERRIDE SWITCH CAUTIOUSLY TO PREVENT EQUIPMENT DAMAGE.

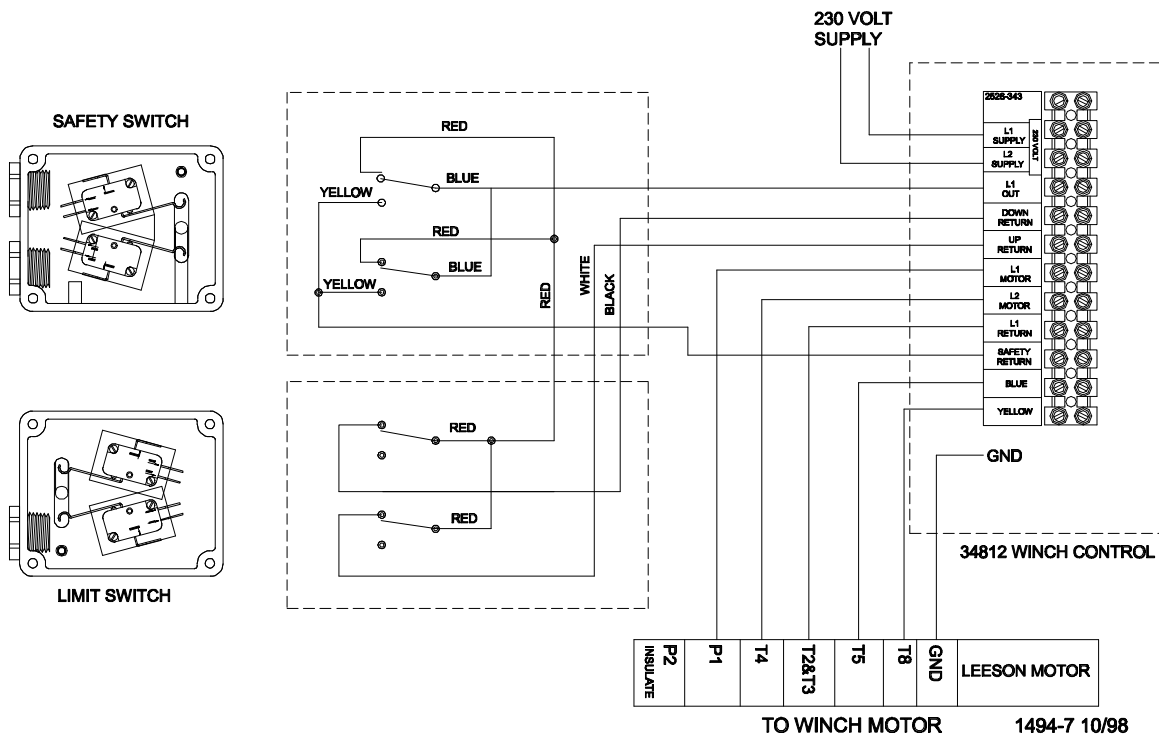
Winch Control Wiring Diagram with 29820-3 Tower Limit Switch

37215 MULTI-LIFT Winch with 34812 Winch Control
and 29820-3 Tower Limit Switch
or
14560 or 14580 Electric Power Winch with 34812 Winch Control
and 29820-3 Tower Limit Switch

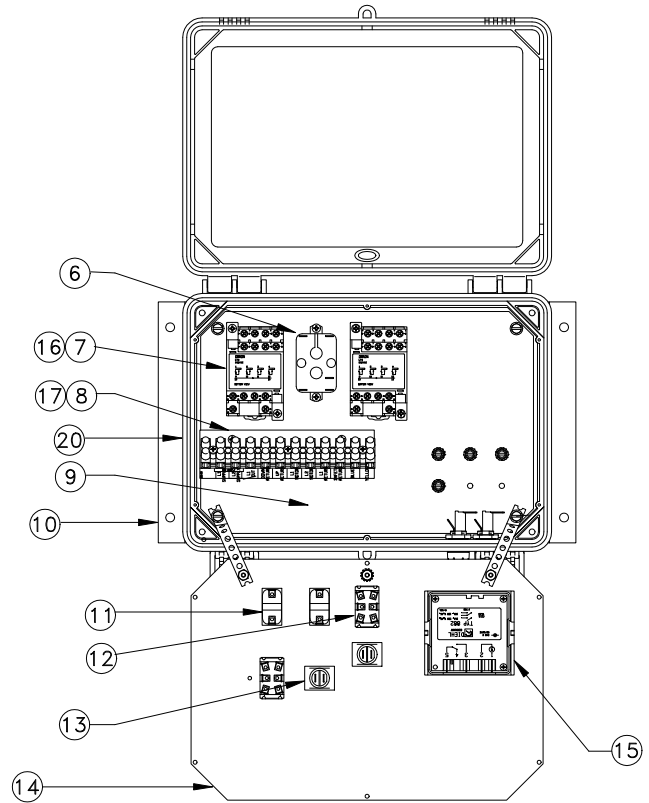
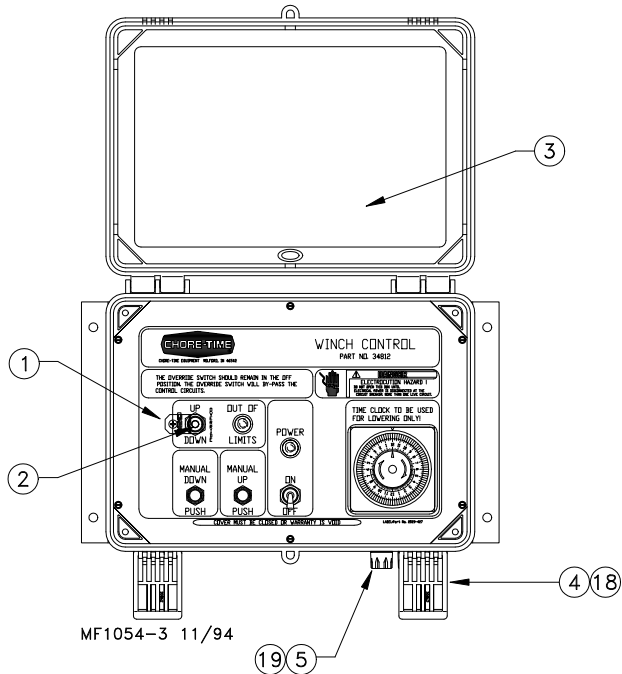


Winch Control Wiring Diagram with 39464 Limit Switch

37215 MULTI-LIFT with 34812 Winch Control and 39464 Limit Switch



34812 Winch Control Parts Listing



Item	Description	Part No.
1	Switch Lock	34984
2	Toggle Switch (DPDT)	20135
3	Clear Lid	30859
4	Control Box Latch	30862
5	Fuse Holder	24431
6	Relay	5574
7	4 PDT Relay (230 V)	34910
8	Terminal Mount Bracket	34563
9	Back Mount	34383
10	Control Box Mount Panel	34852

Item	Description	Part No.
11	Momentary Switch	5785
12	Toggle Switch	6014
13	Pilot Light	7044
14	Winch Control Panel	34382
15	Time Clock	34912
16	Track Mounting Socket	34909
17	Terminal Strip	34925
18	Control Box Latch Pivot	30863
19	10 Amp Fuse	7350
20	Control Box	34985



**Made to work.
Built to last.**

Revisions to this Manual

Page No.	Description of Change
--	Changed, Added Wiring Diagrams, Changed Manual Format

Contact your nearby Chore-Time distributor or representative for additional parts and information.

**CTB Inc.
P.O. Box 2000 • Milford, Indiana 46542-2000 • U.S.A.
Phone (219) 658-4101 • Fax (800) 333-4191
E-Mail: ctb@ctbinc.com • Internet: <http://www.ctbinc.com>**

Printed in the U.S.A.