



# ***Growing Opportunities***

Grain • Protein • Processing • Industrial

# Our Global Challenge

According to the United Nations, the world population is predicted to reach nearly 10 billion people by the year 2050. Also, many people are expected to move up from poverty levels into the middle class, and with that comes an increased demand for high-protein food sources such as poultry and pork. Not only does this trend require greater livestock production, but it also demands more grain to feed the animals. At the same time, the amount of farmland per capita is decreasing rapidly. This means we need to develop new

technologies to help agricultural producers and processors become much more efficient to maintain a safe, sustainable, affordable and abundant global food supply.

Our challenge does not end with the food supply chain. As the population grows, biofuel and other industrial uses for agricultural and related products will also experience an increase in demand. These trends only magnify the need for innovation and fuel CTB's Growing Opportunities.

Headquarters  
**Milford, Indiana, U.S.A.**

Founded  
**1952**

**\$1 billion**  
Annual Sales

**3,000+**  
Employees Worldwide

**46** Manufacturing  
& Warehouse Facilities

# Leadership Through Innovation®

CTB is at the forefront of the worldwide challenge to feed a growing population. And we are leading the way through innovation and the development of new technologies that increase agricultural efficiency.

As a result, we have experienced phenomenal growth and further established our strong global presence in the market.

## Our Growth Strategy:

- + Emerge as the best-cost manufacturer
- + Emphasize a product-driven focus
- + Expand global physical presence
- + Fortify through acquisition
- + Enhance financial strength

## Our Values:

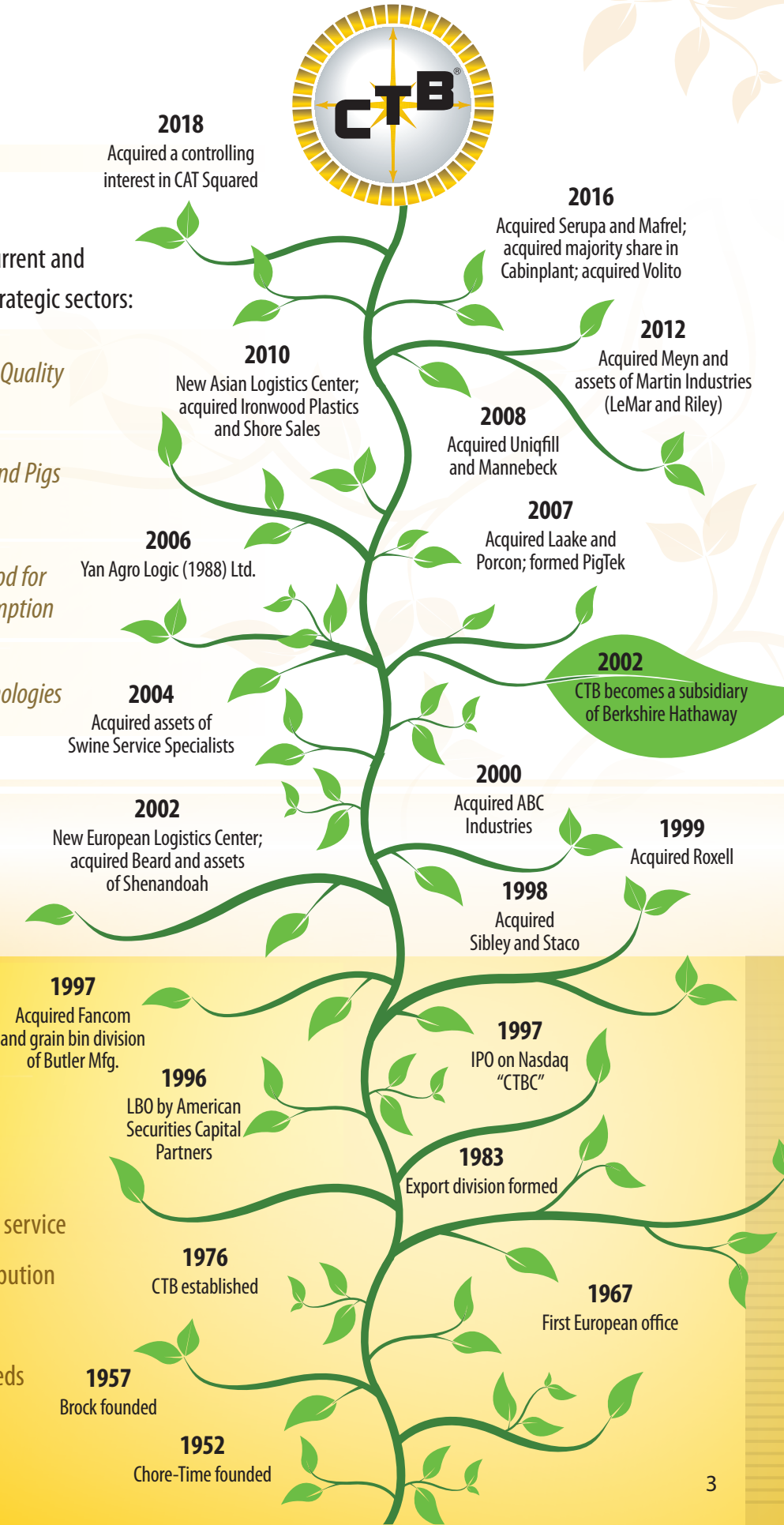
- + Integrity in all things
- + Customers are why we exist
- + Profitability is a must
- + Excellence in all we do
- + People make the difference

## Our Strategic Direction

While CTB is a highly diverse company, our current and future growth is organized around four key strategic sectors:

- Grain** · *Post-Harvest Preservation of Grain Quality and Protection from Loss*
- Protein** · *Equipment for Raising Poultry and Pigs and Producing Eggs for Food*
- Processing** · *Equipment for Preparing Food for Further Processing or Consumption*
- Industrial** · *Non-Agriculture Specific Technologies*

## CTB's Growth



## Why Customers Prefer Our Brands:

- Company strength and dependability
- Long-standing brand history
- Reputation for innovation, technology and service
- Established worldwide presence and distribution
- Extensive capacity and resources
- One-stop source for many supply chain needs
- Committed to ethical work practices



## Grain Production

### Storage, Handling, Conditioning & Structures

World grain production has been rising at a rapid rate – and it needs to in order to meet demand. But with more grain comes the requirement for more storage, handling and conditioning facilities, as well as other equipment to test and care for grain after it is harvested. CTB's business units have been leading the industry by offering solutions with larger capacities, higher production, increased efficiency and more accurate performance for managing harvested grain.

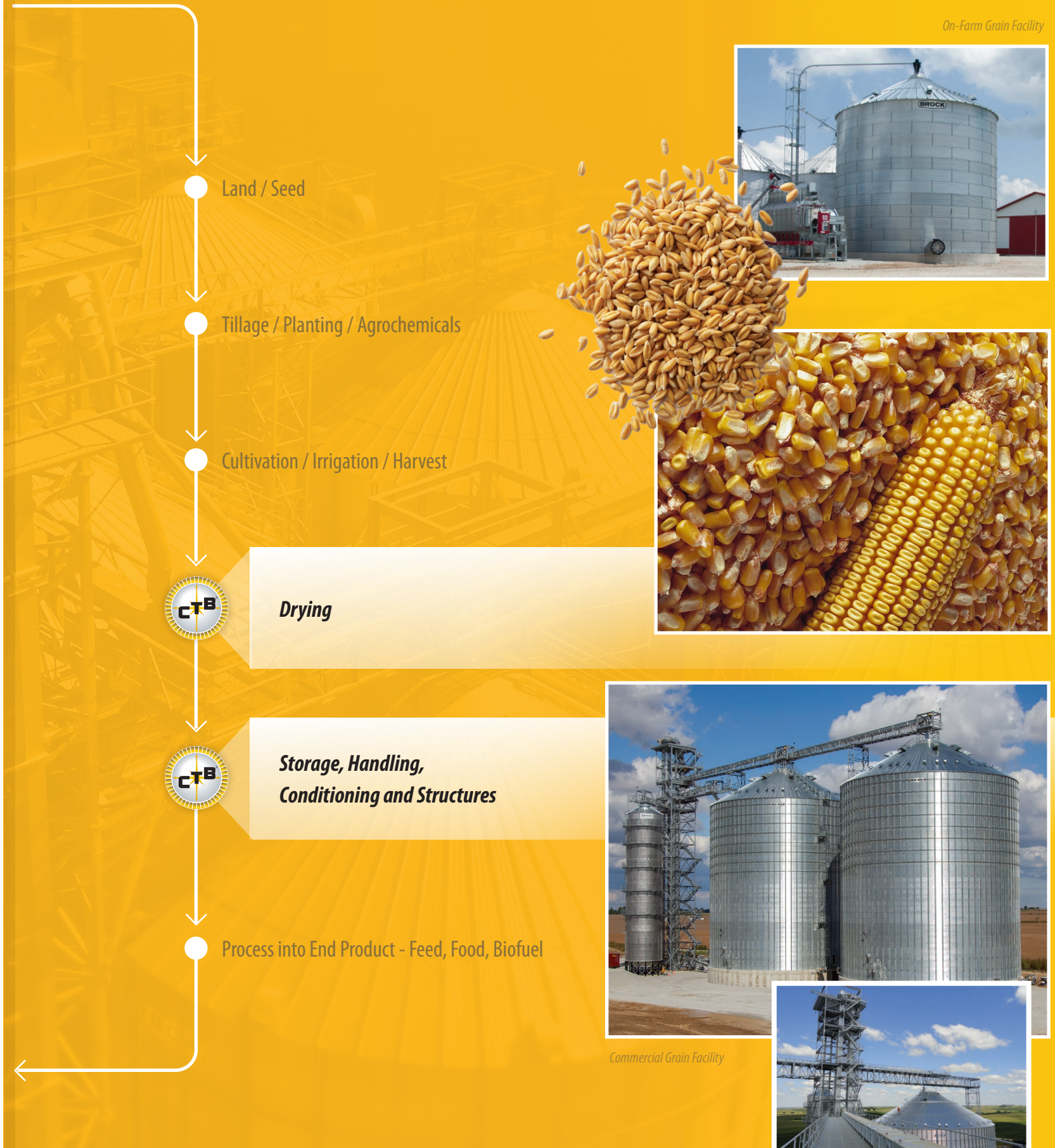
#### Product Categories:

Storage bins, grain dryers, elevators, catwalks, towers, conveyors

#### Used By:

Farmers and a multitude of commercial businesses

#### Brands:





## Poultry Production

### Poultry Care & Management

Worldwide demand for poultry has been steadily increasing, and that growth is projected to continue, especially as emerging markets keep adding protein to their diets. Addressing the need for increased meat production, CTB has established its experienced brands as innovators throughout many segments of poultry production with products used for growing broilers and turkeys for meat, as well as raising breeder birds to produce more young broilers.

#### Product Categories:

Systems for poultry care and environmental control, electronic controls and software, processing and packaging systems, buildings

#### Used By:

Poultry growers and integrators

#### Brands:

**AgroLogic**

Cabinplant®

**CAT<sup>2</sup>**

**CHORE-TIME**

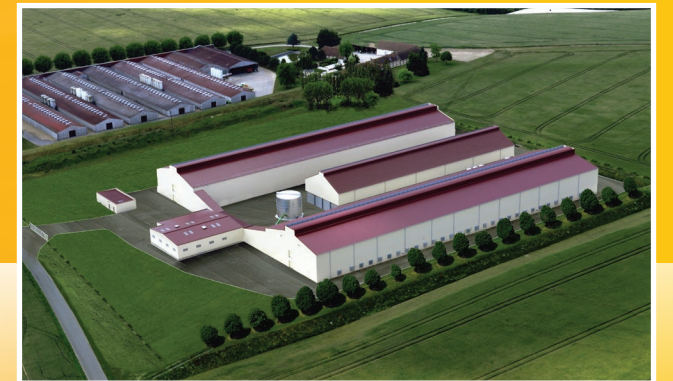
**Fancom**

**MEYN**

**ROXELL**

**SERUPA**

Poultry Production Buildings



**Buildings**



Bird Genetics



Pharmaceuticals / Feed Production



**Feed, Water, Air,  
Temperature and Housing Tools**



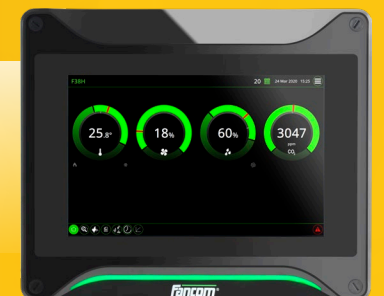
Broiler Feeders



Turkey Poult Feeder



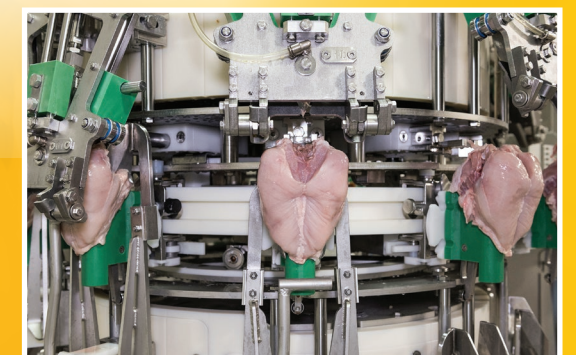
**Management, Controls and Software**



Electronic Poultry House Controller



**Process into End Product - Poultry Meat**



Chicken Breast Processing



## Egg Production

### Layer Hen Care & Management

CTB is well established in the egg industry, as well as the poultry industry. Offering many of the same types of solutions in both markets, we are positioned to take full advantage of the growing demand for sustainable egg production. We strive to optimize the health and productivity of poultry through systems that allow finite resources – such as feed, water and energy – to be used more efficiently.

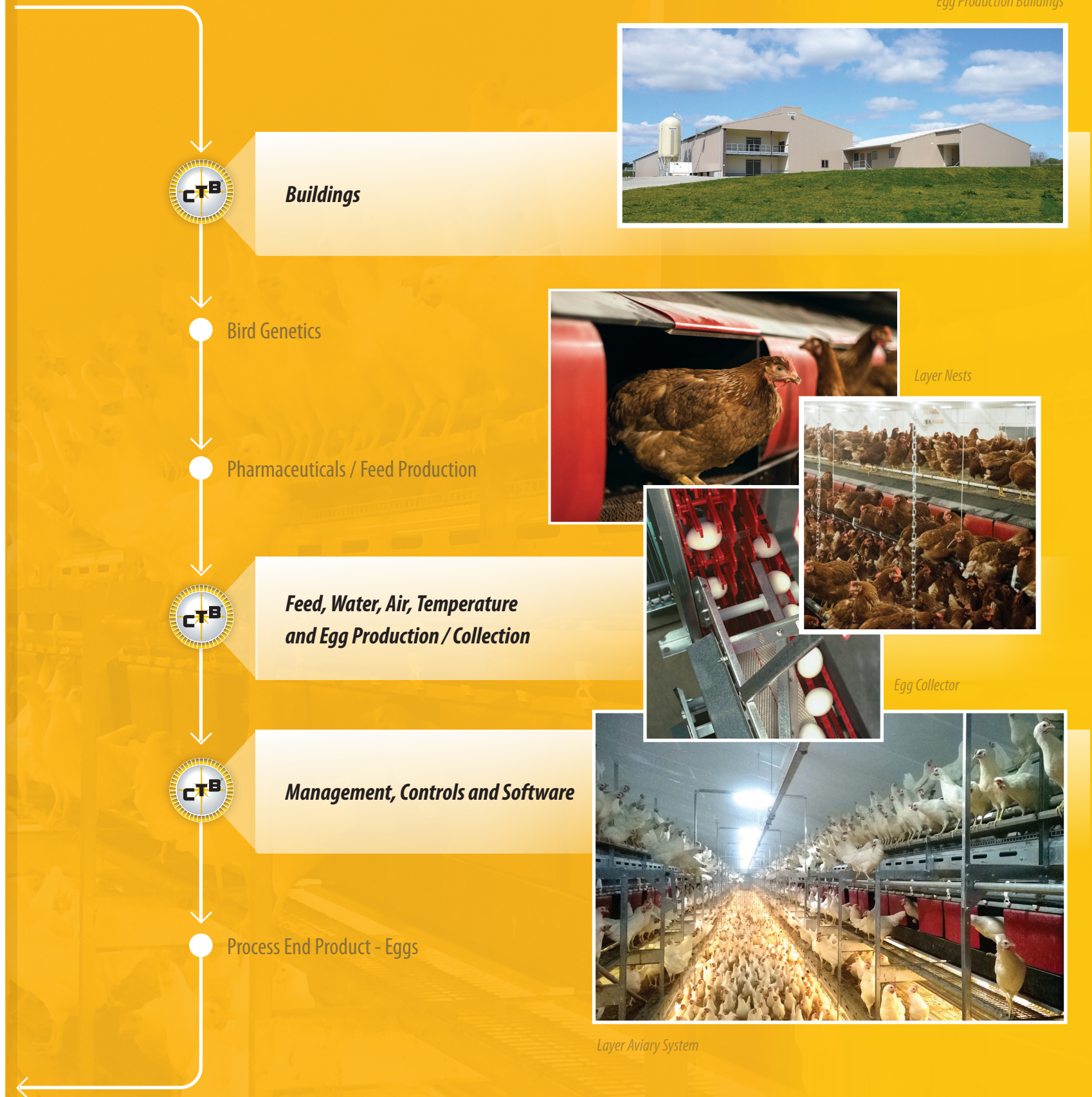
#### Product Categories:

Poultry care systems, egg collectors, environmental control systems, manure handling systems, software

#### Used By:

Egg producers

#### Brands:





## Pig Production

### Animal Care & Management

Worldwide demand for pork continues to climb dramatically. Along with the need to efficiently increase production comes the growing desire to improve animal care and environmental sustainability. In response, CTB has taken a leadership role in all of these areas to meet current and future needs in this rapidly growing market segment.

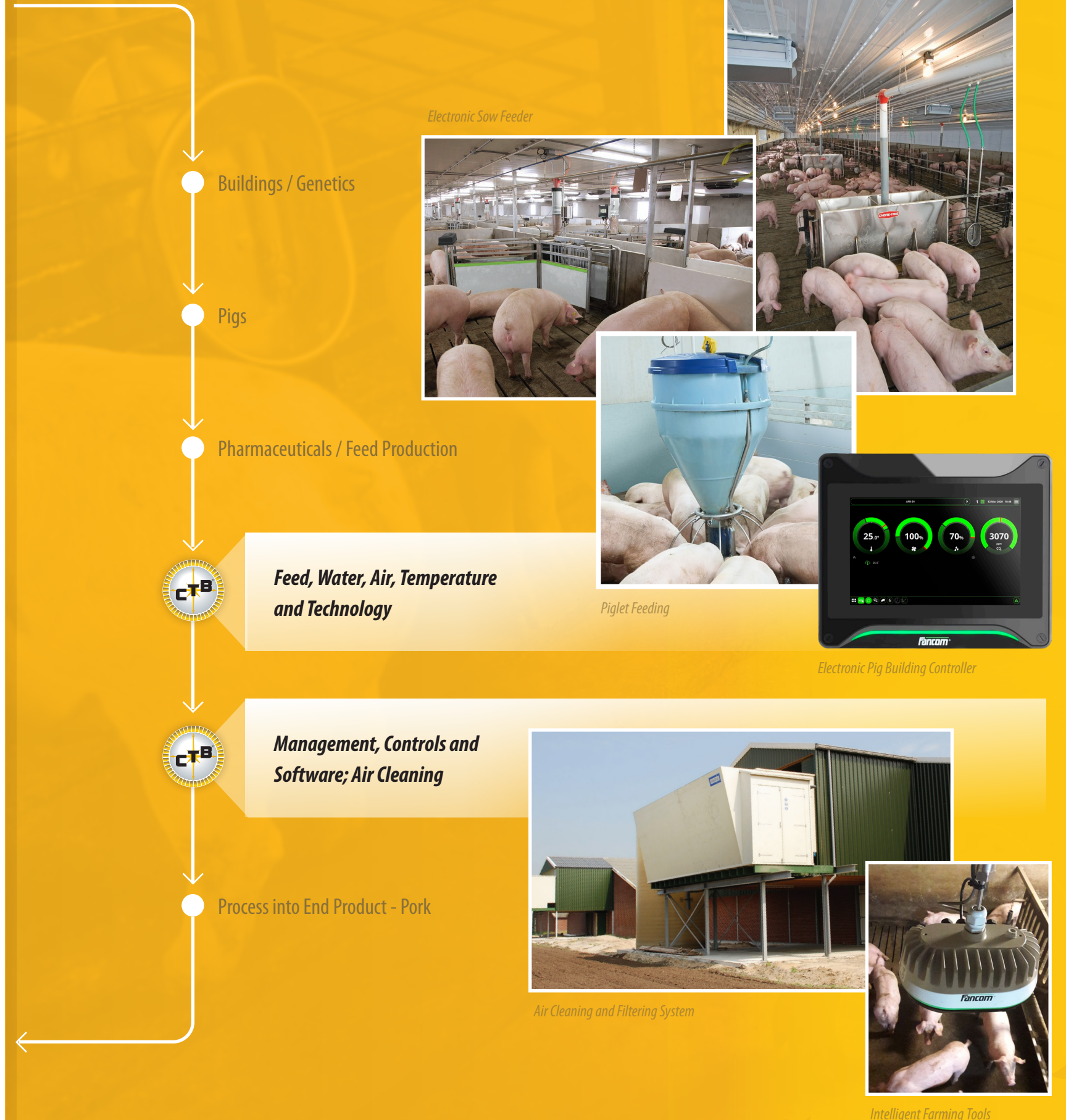
#### Product Categories:

Sow and pig care systems, environmental control systems, electronic feeding, animal identification and biometric systems, air quality systems, integrated management software

#### Used By:

Pig producers

#### Brands:





## Food Processing

### Processing, Weighing & Packaging

As food production increases to meet global demand, better processing and packaging equipment is needed to bring the food to consumers' tables. Therefore, CTB has invested in this industry to expand our footprint in the food supply chain and take advantage of the large growth potential.

We offer solutions for processing companies to help them process a variety of foods, such as poultry, fish, seafood, fruit, vegetables and convenience foods.

#### Product Categories:

Processing equipment, weighing and packaging equipment, further processing equipment, software and business-intelligence solutions for food processing applications, and blockchain-enabled traceability

#### Used By:

Meat/poultry processors, fish/seafood processors, fruit/vegetable processors, cheese producers, fresh prepared food producers

#### Brands:

Cabinplant®

CAT<sup>2</sup>

MEYN®



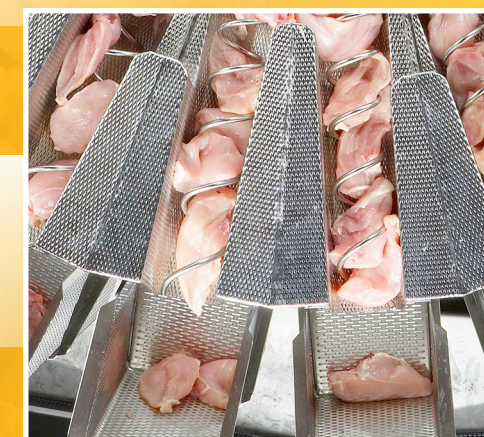
#### Meat Harvesting



Chicken Drumstick Processing



#### Weighing and Packaging



Sorting and Weighing Chicken



#### Further Processing into Ready-to-Eat Convenience Foods



Pea Processing



#### Specialty Solutions for Processing Fish, Seafood, Fruits, Vegetables and Cheese



#### Software



Software for Food Processing



## Industrial Equipment / Applications

CTB has strategically acquired business units outside of our agricultural focus to achieve diversification for greater stability and growth potential. Although these companies are not directly related to our core business units, they bring critical, unique expertise and innovations that can further our ag technologies and help us thrive despite the cyclical nature of agriculture.

### Product Categories:

Oil containment systems, industrial storage and handling of free-flowing material, equine stalls and feeders, architectural doors and windows, precision-molded plastic components, industrial buildings, air cleaning and scrubbing systems

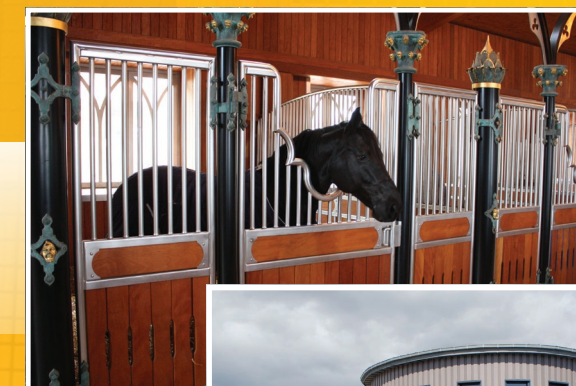
### Used By:

Automotive / industrial equipment manufacturers, commercial / industrial builders, electronics manufacturers, equestrian professionals, fruit / vegetable growers, mechanical contractors, medical equipment manufacturers, mushroom growers, oil producers, ranchers and others

### Brands:



**Equine Stalls and Feeders;  
Architectural Doors and Windows**



Horse Stall



**Warehouse and Office Buildings**

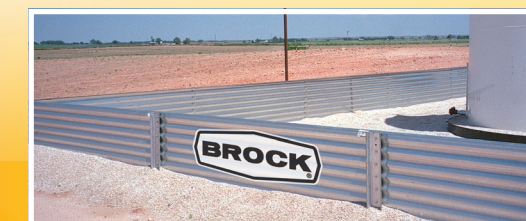
Office Building



Warehouse Building



**Oil Containment Systems;  
Plastic Pellet Storage and Handling**



Oil Containment System



**Precision-Molded Plastic Components**

Plastic Parts for Automotive  
and Other Industries



**Air Cleaning and Scrubbing Systems**



Air Cleaning and Filtering System



## CTB, Inc. is *Helping to Feed a Hungry World*®...

... through a number of business units that manufacture and supply systems and solutions primarily for the grain, poultry, pig and egg sectors of the agricultural supply chain. Beyond traditionally ag-oriented solutions, we also produce buildings, stables, software solutions for food processing and products for various other applications. With every industry we touch, we are Growing Opportunities for our customers, employees, shareholders and people around the world.



**CTB, Inc.**

A Berkshire Hathaway Company

[www.ctbinc.com](http://www.ctbinc.com)

611 North Higbee Street • P.O. Box 2000 • Milford, Indiana 46542-2000 U.S.A.

Phone: +1 574-658-4191 • Email: [ctb@ctbinc.com](mailto:ctb@ctbinc.com)

**AgroLogic**®

**BROCK**®

Cabinplant®

**CAT**²

**CHORE-TIME**®

**Fancom**®

**IRONWOOD  
PLASTICS**®

**LAAKE**®

**LEMAR  
INDUSTRIES**®

**MEYN**®

**PIGTEK**®

**ROXELL**®

**SERUPA**®