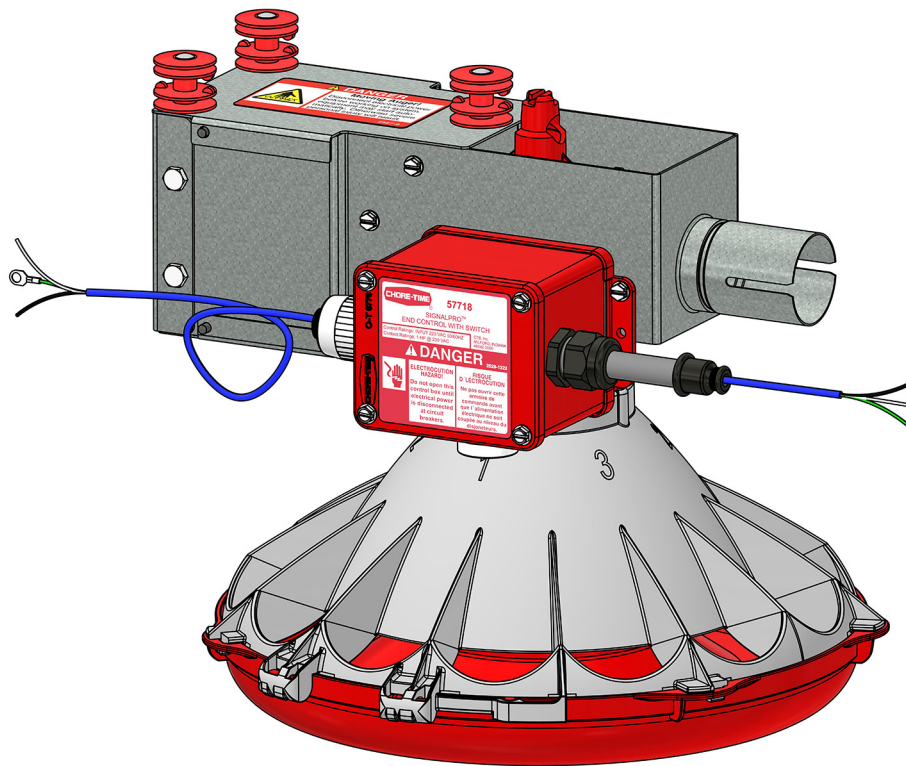


SignalPro™ End Control



Installation Manual

Installation Manual

For additional parts and information, contact your nearest Chore-Time distributor or representative.
Find your nearest distributor at: www.choretime.com/contacts

Introduction

Safety

Caution, Warning, and Danger Decals have been placed on the equipment to warn of potentially dangerous situations. Care should be taken to keep this information intact and easy to read at all times. Replace missing or damaged safety decals immediately.

Safety–Alert Symbol



This is a safety–alert symbol. When you see this symbol on your equipment, be alert to the potential for personal injury. This equipment is designed to be installed and operated as safely as possible...however, hazards do exist.

Understanding Signal Words

Signal words are used in conjunction with the safety–alert symbol to identify the severity of the warning.



DANGER—Indicates an imminently hazardous situation which, if not avoided, **WILL** result in death or serious injury.



WARNING—Indicates a potentially hazardous situation which, if not avoided, **COULD** result in death or serious injury.



CAUTION—Indicates a hazardous situation which, if not avoided, **MAY** result in minor or moderate injury.

Follow Safety Instructions

Carefully read all safety messages in this manual and on your equipment safety signs. Follow recommended precautions and safe operating practices.

Keep safety signs in good condition. Replace missing or damaged safety signs.

Decal Descriptions

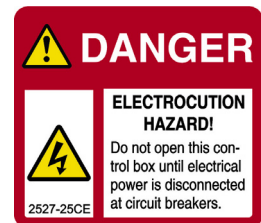
DANGER: Moving Auger

This decal is placed on the End Cap Weldment and Clean-out cover. Severe personal injury will result, if the electrical power is not disconnected, prior to servicing the equipment.



DANGER: Electrical Hazard

- Disconnect electrical power before inspecting or servicing equipment unless maintenance instructions specifically state otherwise.
- Ground all electrical equipment for safety.
- All electrical wiring must be done by a qualified electrician in accordance with local and national electric codes.
- Ground all non-current carrying metal parts to guard against electrical shock.
- Electrical disconnects and over current protection are not supplied with the equipment.

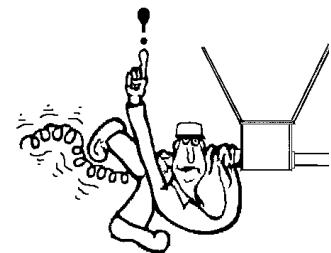


DANGER: Springing Auger

Use caution when working with Auger. Springing Auger may cause personal injury.

Attention: Read the Manual

See the manual for detailed installation instructions.



Limited Warranty

Chore-Time Group, a division of CTB, Inc. (“Chore-Time”) warrants the new CHORE-TIME Indexed Pullet Feeding products manufactured by Chore-Time to be free from defects in material or workmanship under normal usage and conditions, for One (1) year from the date of installation by the original purchaser (“Warranty”). Chore-Time provides for an extension of the aforementioned Warranty period (“Extended Warranty Period”) with respect to certain Product parts (“Component Part”) as set forth in the table below. If such a defect is determined by Chore-Time to exist within the applicable period, Chore-Time will, at its option, (a) repair the Product or Component Part free of charge, F.O.B. the factory of manufacture or (b) replace the Product or Component Part free of charge, F.O.B. the factory of manufacture. This Warranty is not transferable, and applies only to the original purchaser of the Product.

Component Part	Extended Warranty Period
RXL Fan (except motors and bearings)	Three (3) Years
TURBO® Fan (except motors and bearings)	Three (3) Years
TURBO® Fan fiberglass housing, polyethylene cone, and cast aluminum blade.	Lifetime of Product
TURBO® fan motor and bearings.	Two (2) Years
Chore-Time® Poultry Feeder Pan	Three (3) Years
Chore-Time® Rotating Centerless Augers (except where used in applications involving high moisture feed stuffs exceeding 17%)	Ten (10) Years
Chore-Time Steel Auger Tubes	Ten (10) Years
ULTRAFLO® Breeder Feeding System auger and feed trough.	Five (5) Years
ULTRAPAN® Feeding System augers.	Five (5) Years

CONDITIONS AND LIMITATIONS

THIS WARRANTY CONSTITUTES CHORE-TIME’S ENTIRE AND SOLE WARRANTY AND CHORE-TIME EXPRESSLY DISCLAIMS ANY AND ALL OTHER WARRANTIES, INCLUDING, BUT NOT LIMITED TO, EXPRESS AND IMPLIED WARRANTIES, INCLUDING, WITHOUT LIMITATION, WARRANTIES AS TO MERCHANTABILITY OR FITNESS FOR PARTICULAR PURPOSES. CHORE-TIME shall not be liable for any direct, indirect, incidental, consequential or special damages which any purchaser may suffer or claim to suffer as a result of any defect in the Product. Consequential or Special Damages as used herein include, but are not limited to, lost or damaged products or goods, costs of transportation, lost sales, lost orders, lost income, increased overhead, labor and incidental costs, and operational inefficiencies. *Some jurisdictions prohibit limitations on implied warranties and/or the exclusion or limitation of such damages, so these limitations and exclusions may not apply to you. This warranty gives the original purchaser specific legal rights. You may also have other rights based upon your specific jurisdiction.*

Compliance with federal, state and local rules which apply to the location, installation and use of the Product are the responsibility of the original purchaser, and CHORE-TIME shall not be liable for any damages which may result from non-compliance with such rules.

The following circumstances shall render this Warranty void:

- Modifications made to the Product not specifically delineated in the Product manual.
- Product not installed and/or operated in accordance with the instructions published by the CHORE-TIME.
- All components of the Product are not original equipment supplied by CHORE-TIME.
- Product was not purchased from and/or installed by a CHORE-TIME authorized distributor or certified representative.
- Product experienced malfunction or failure resulting from misuse, abuse, mismanagement, negligence, alteration, accident, or lack of proper maintenance, or from lightning strikes, electrical power surges or interruption of electricity.
- Product experienced corrosion, material deterioration and/or equipment malfunction caused by or consistent with the application of chemicals, minerals, sediments or other foreign elements.
- Product was used for any purpose other than for the care of poultry and livestock.

The Warranty and Extended Warranty may only be modified in writing by an officer of CHORE-TIME. CHORE-TIME shall have no obligation or responsibility for any representations or warranties made by or on behalf of any distributor, dealer, agent or certified representative.

Effective: **April, 2014**

Installation

Connection of End Control to Feed Line Tube

The End Control Unit must be at least 10 feet [3 m] from the end of the building to allow birds access around the end of the feeder line.

1. Assemble the End Control Unit to the Feeder Line Control Tube using a clamp/anti-roost bracket. See **Figure 1.**

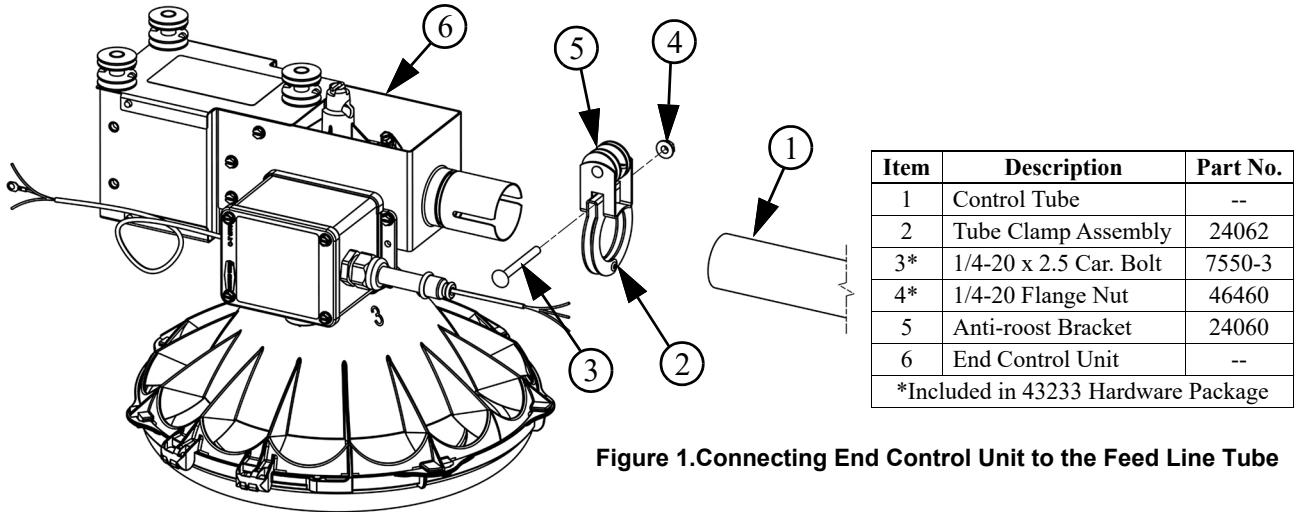


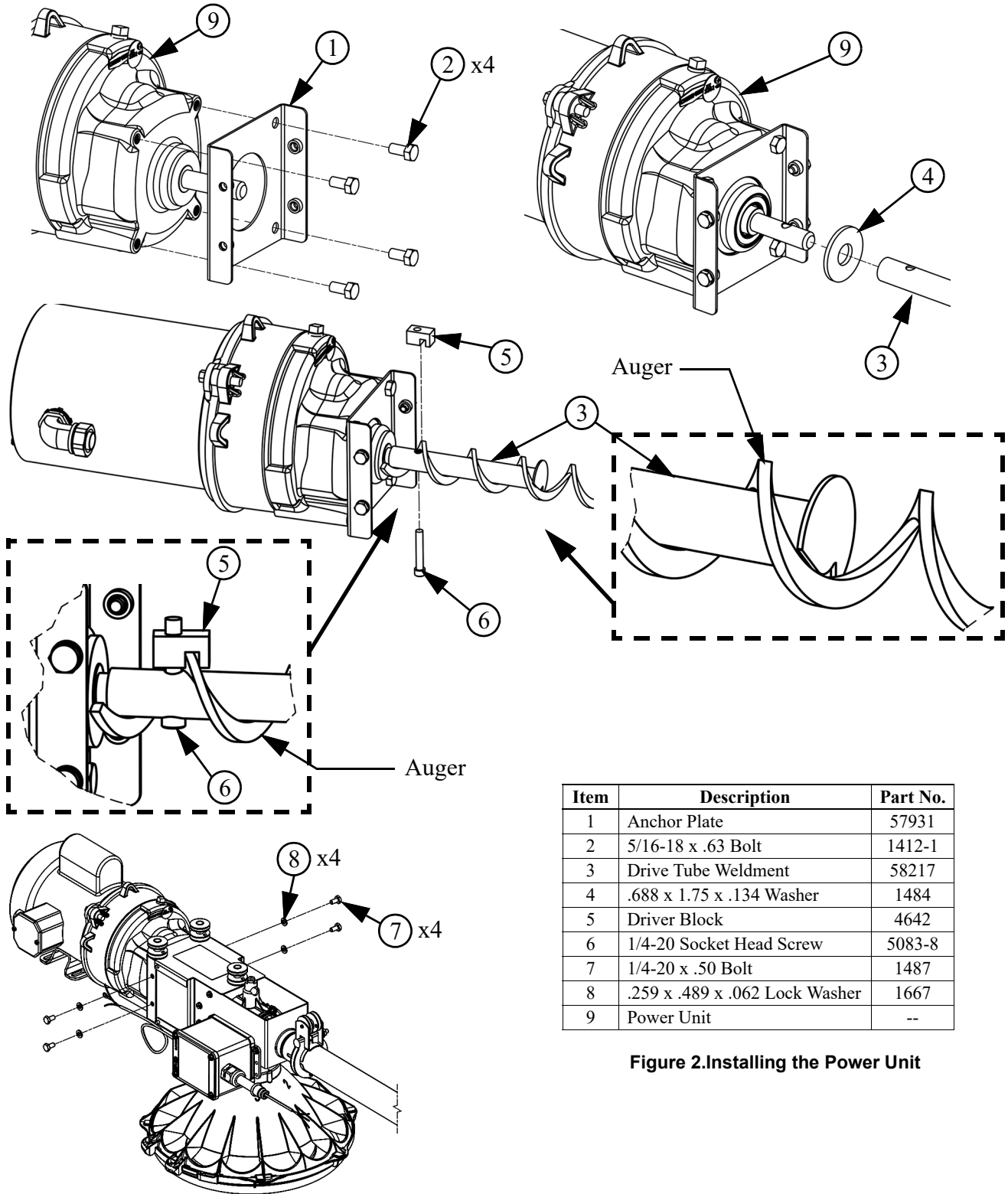
Figure 1. Connecting End Control Unit to the Feed Line Tube

Auger Installation

Refer to the Auger section in your System Manual for Auger Installation and Auger Stretch information.

Installing the Power Unit

1. Install the Anchor Plate (Item 1) with 5/16-18 Bolts (Item 2) as shown.
2. Slide the Drive Tube Weldment (Item 3) and Flat Washer (Item 4) over the output shaft on the Power Unit.
3. Continue installing Auger until the Auger reaches the Control Unit end of the feeder line.
4. Turn the Drive Tube Weldment into the Auger.
5. Use the Driver Block (Item 5) to secure the auger to the Output Shaft using a Socket Head Screw (Item 6).
6. Attach the Anchor Plate and Gearhead Assembly to the Control Unit Body using the included hardware.



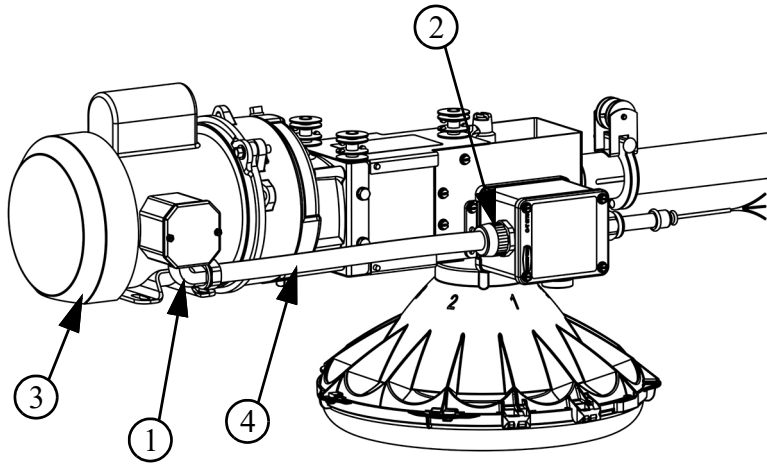
Item	Description	Part No.
1	Anchor Plate	57931
2	5/16-18 x .63 Bolt	1412-1
3	Drive Tube Weldment	58217
4	.688 x 1.75 x .134 Washer	1484
5	Driver Block	4642
6	1/4-20 Socket Head Screw	5083-8
7	1/4-20 x .50 Bolt	1487
8	.259 x .489 x .062 Lock Washer	1667
9	Power Unit	--

Figure 2.Installing the Power Unit

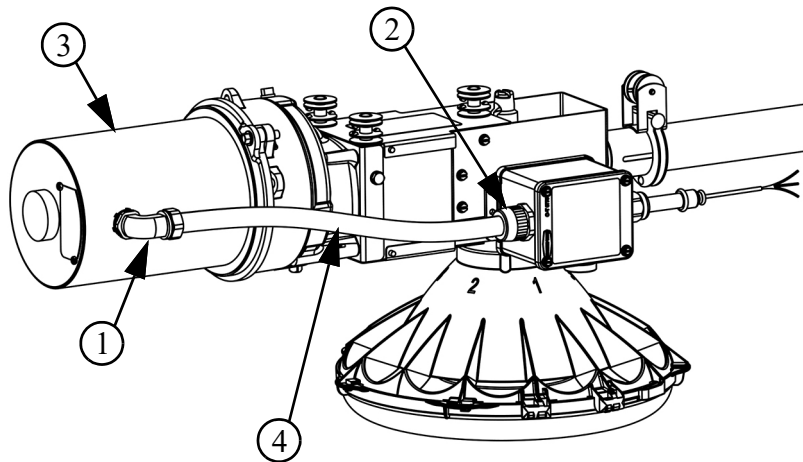
Flex Conduit Installation

Liquid Tight Connectors (**Items 1 and 2**) are included in the End Control Parts Package.

1. Install a Metal "L" Liquid Tight Connector (**Item 1**) in the Power Unit (**Item 3**).
2. Install the Nylon Liquid Tight Connector (**Item 2**) in the End Control.
3. Cut the Flex Conduit (**Item 4**) to length.
4. Slide the wires from the End Control through the Flex Conduit.
5. Install the Flex Conduit with the wires in the connectors.



Motor with Conduit Box



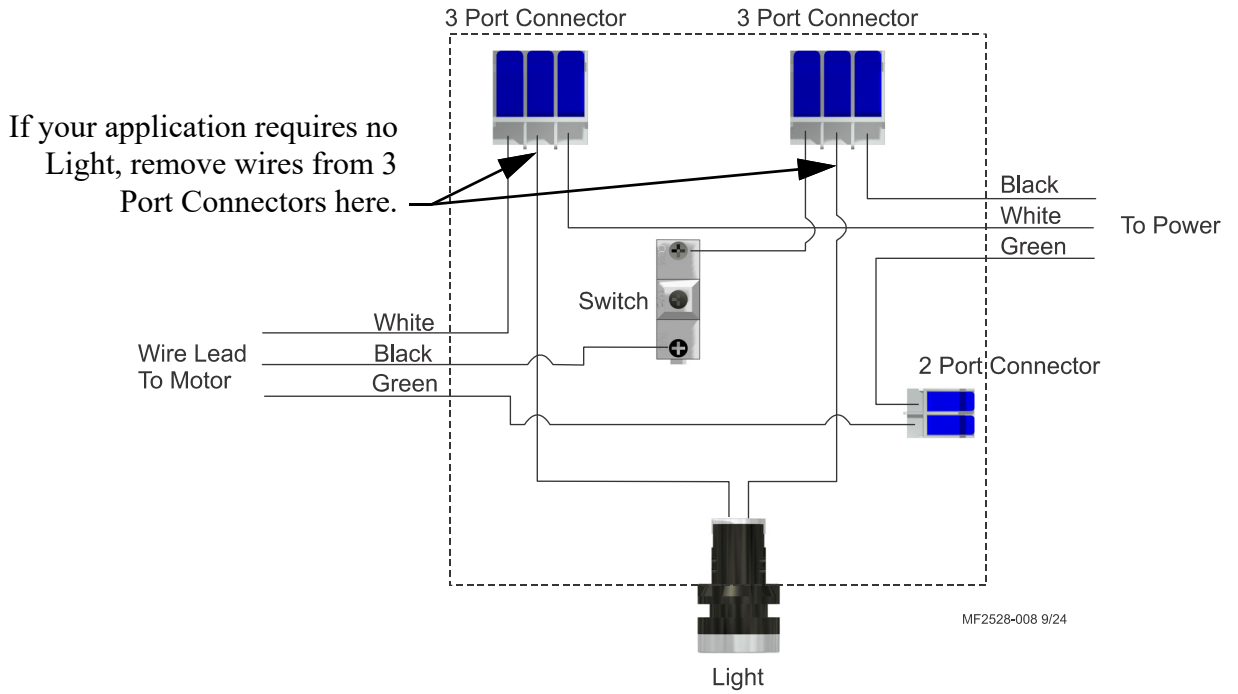
Motor without Conduit Box

Item	Description	Part No.
1	1/2" Metal "L" Liquid Tight Connector	23810
2	1/2" Nylon Liquid Tight Connector	26980
3	Power Unit	Varies
4	Flex Conduit	26982-28
*Items 1 & 2 included with End Control		

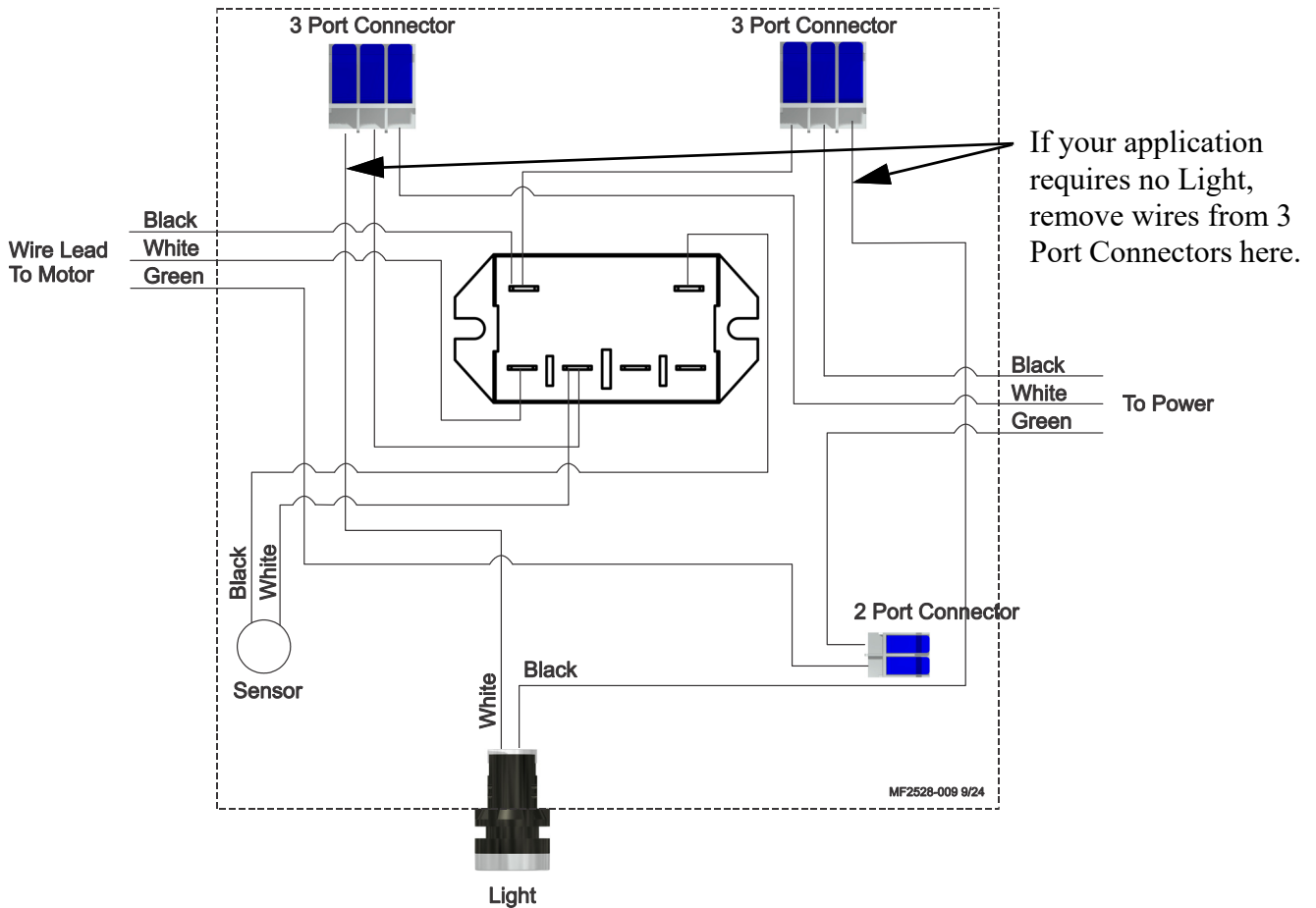
Figure 3. Installing Water Tight, Cutting and Installing Conduit

Wiring

57718 Mechanical End Control Internal Wiring

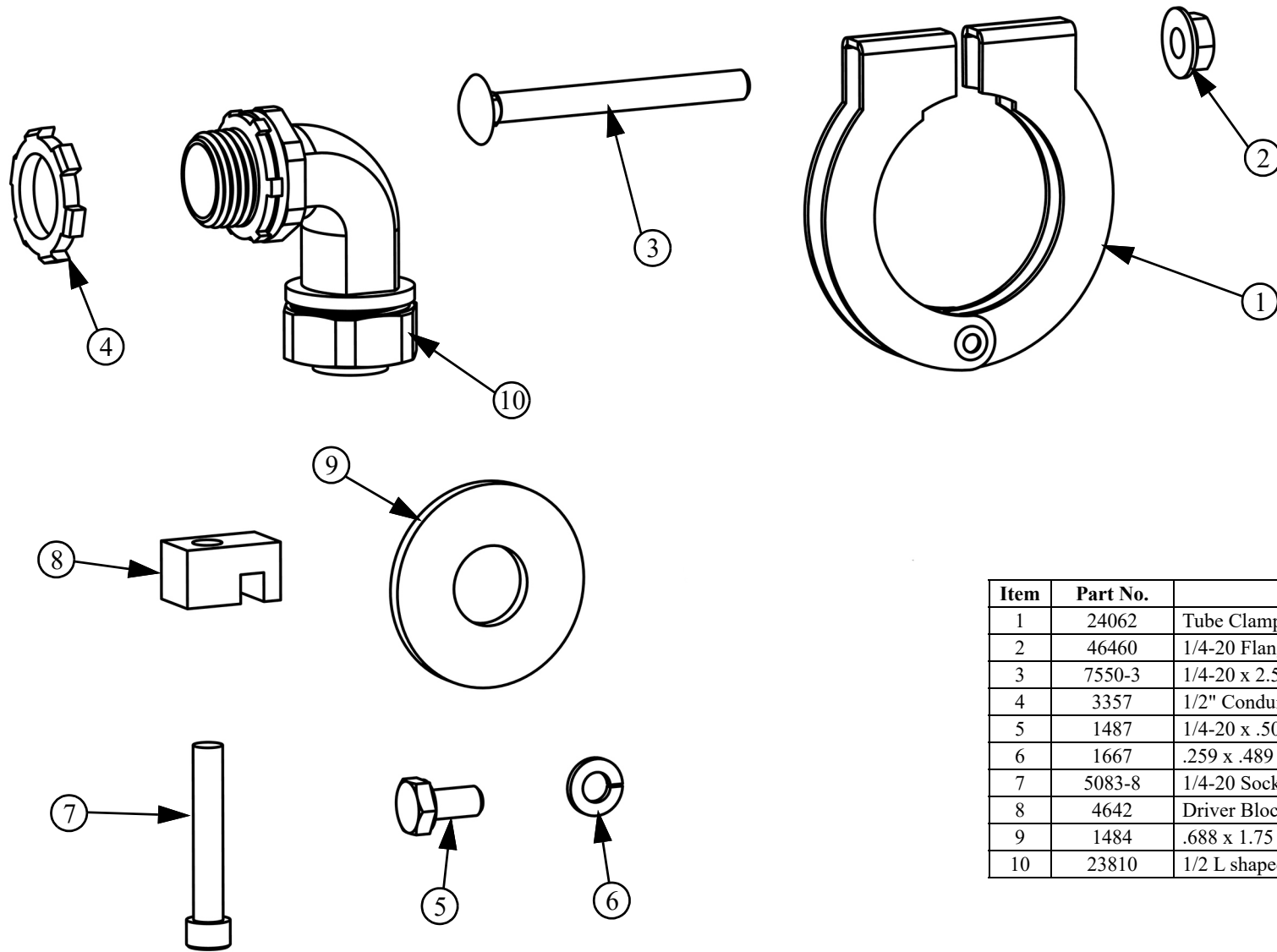


57719 End Control with Sensor Wiring



Part Numbers

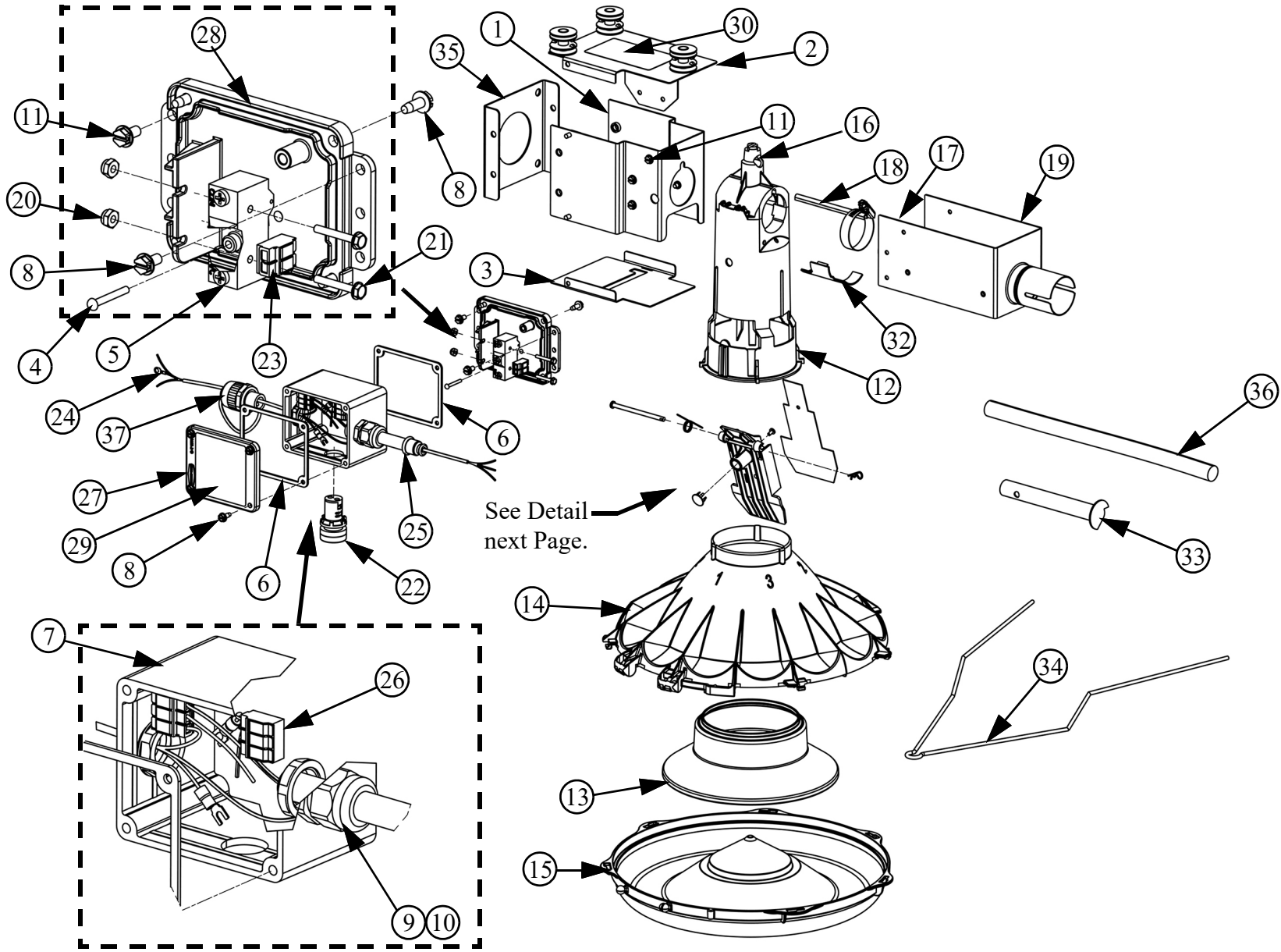
Parts Package (57932)



Item	Part No.	Description
1	24062	Tube Clamp Assembly
2	46460	1/4-20 Flange Nut
3	7550-3	1/4-20 x 2.5 Car. Bolt
4	3357	1/2" Conduit Lock Nut
5	1487	1/4-20 x .50 Bolt
6	1667	.259 x .489 x .062 Lock Washer
7	5083-8	1/4-20 Socket Head Screw
8	4642	Driver Block
9	1484	.688 x 1.75 x .134 Washer
10	23810	1/2 L shaped Liquid Tight Fitting

This page left blank intentionally...

10 SignalPro™ End Control with Mechanical Sensor (57718)

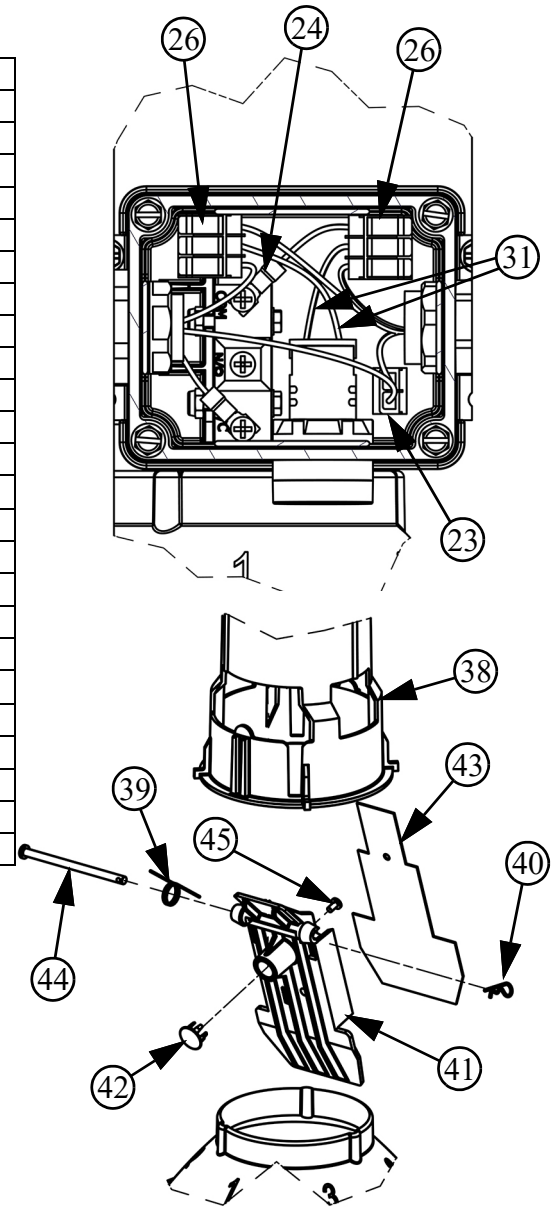


See Detail
next Page.

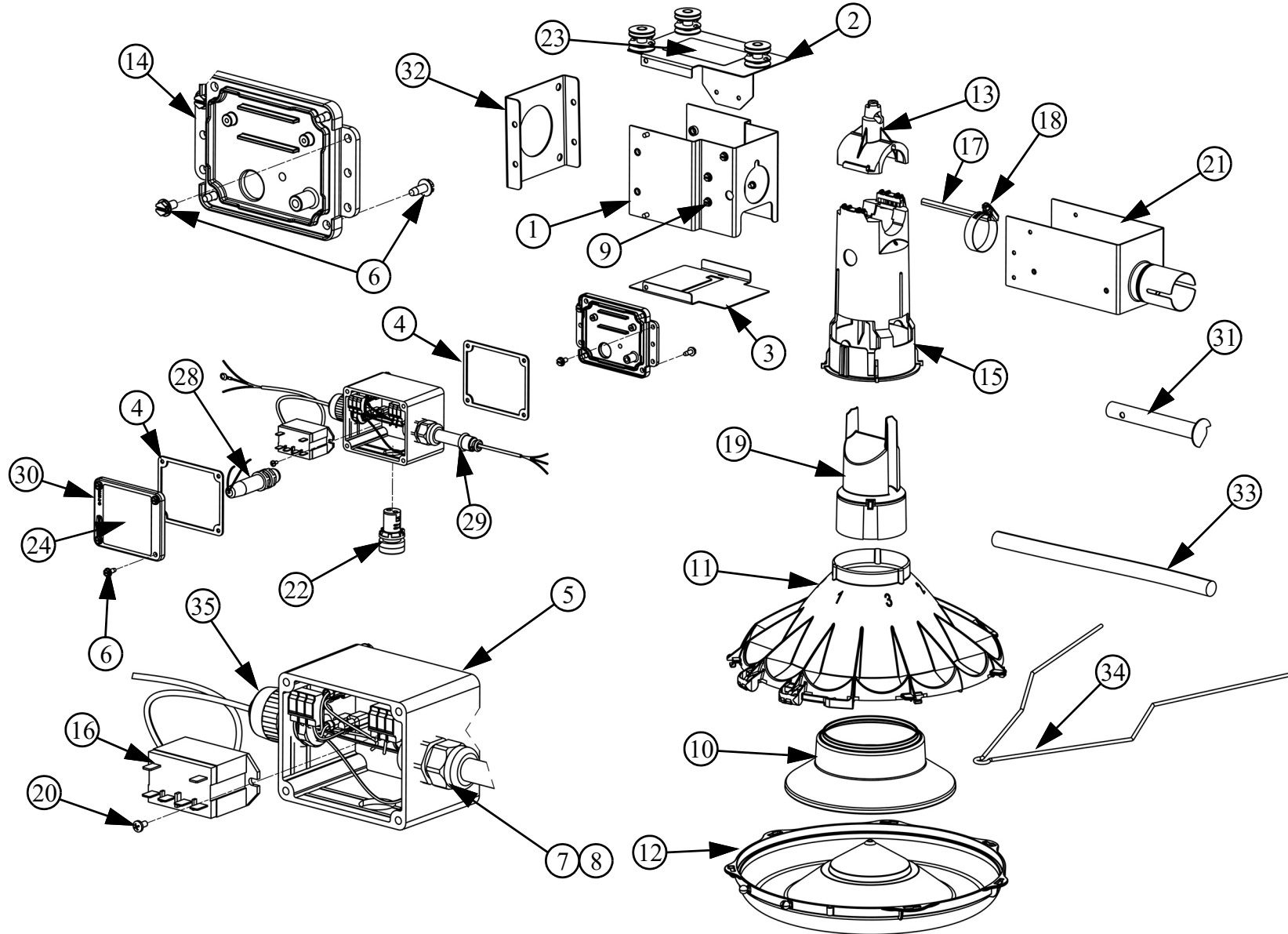
57718 SignalPro™ Mechanical End Control		
Item	Part No.	Description
1	57721	SignalPro™ Feeder Locator Bracket
2	57729P	SignalPro™ Top Cover without Decal
3	57722	Bottom Cover
4	8757	1/8 x 1 Round Head Rivet
5	46091	Micro Basic Switch
6	6777	Switch Box Gasket
7	57725	SignalPro™ Machined Box
8	28075	#10 x.5 Screw
9	24685	Water Tight Connector
10	43662	.50 Conduit Lock Nut
11	4416-7	10-24 Hex Screw
12	57726	SignalPro™ Cone Assembly
13	57355	Konavi Breeder Skirt
14	57396	Chick Excluder
15	57395	KONAVI® Breeder Pan
16	56753	Konavi® Breeder Cap
17	57745	1.88 x 2.00 Adjustable Hose Clamp
18	14484	.25 x .125 Locking Pin
19	58050	SignalPro™ Support Tube Assembly
20	57928	6-32 Lock Nut
21	57927	6-32 Hex Bolt
22	57825	SignalPro™ LED Light

Item	Part No.	Description
23	57747-2	L22 2 Port Connector
24	25499W	End Control Wiring Assembly
25	4999-137	SignalPro™ Cord Assembly
26	57747-3	L23 3 Port Connector
27	6776R	Switch Box Cover
28	57723	Switch Box Base
29	2529-1222	57718 Decal
30	2527-9	Danger Decal
31	57718W	Wire Assembly
32	58005	Drop Blocker
33	58217	Drive Tube Weldment
34	2798	Anti-Roost Guard
35	57931	SignalPro™ Anchor Plate
36	26982-28	Conduit
37	26980	1/2-14 Liquid Tight Fitting
38*	57724	SignalPro™ Machined Switch Cone
39*	57904	.039 Torsion Spring
40*	57731	3/16 Clevis Pin
41*	57727	SignalPro™ Paddle
42*	58006	Paddle Plug
43*	58002	SignalPro™ Mylar Shield
44*	57732	Retainer Pin
45*	46090	#6-32 x .25 Phil. Pan Hd. Screw

*Included in 57726 Cone Assembly

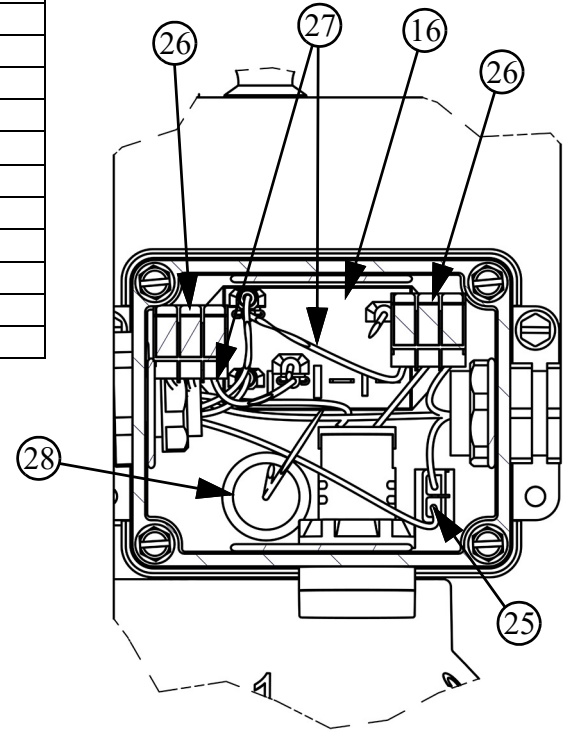


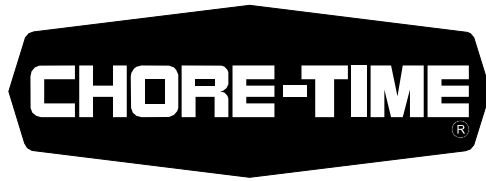
12 SignalPro™ Control Pan with Electronic Sensor (57719)



57719 SignalPro™ End Control with Electronic Sensor		
Item	Part No.	Description
1	57721	SignalPro™ Feeder Locator Bracket
2	57729P	SignalPro™ Top Cover without Decal
3	57722	Bottom Cover
4	6777	Switch Box Gasket
5	57725	SignalPro™ Machined Box
6	28075	#10 x.5 Screw
7	24685	Water Tight Connector
8	43662	.50 Conduit Lock Nut
9	4416-7	10-24 Hex Screw
10	57355	Konavi Breeder Skirt
11	57396	Chick Excluder
12	57395	KONAVI® Breeder Pan
13	56753	Konavi® Breeder Cap
14	57734	SignalPro™ Sensor Box Base
15	57728	SignalPro™ Machined Sensor Cone
16	28904	Relay
17	14484	.25 x .125 Locking Pin

Item	Part No.	Description
18	57745	1.88 x 2.00 Adjustable Hose Clamp
19	57354	Konavi Breeder Restrictor
20	13019	#8 x .375 HXWH Screw
21	58050	SignalPro™ Support Tube Assembly
22	57825	SignalPro™ LED Light
23	2527-9	Danger Decal
24	2529-1223	57719 Decal
25	57747-2	L22 2 Port Connector
26	57747-3	L23 3 Port Connector
27	57719W	Wire Assembly
28	58080	Dol 26 Sensor with Connector
29	4999-137	SignalPro™ Cord Assembly
30	6776R	Switch Box Cover
31	58217	Drive Tube Weldment
32	57931	SignalPro™ Anchor Plate
33	26982-28	Conduit
34	2798	Anti-Roost Gaurd
35	26980	1/2-14 Liquid Tight Fitting





MADE TO WORK.

BUILT TO LAST.®

Revisions to this Manual

Page No.	Description of Change	ECO
13	Changed 46090 to 13019	40762

**For additional parts and information, contact your nearest Chore-Time distributor or representative.
Find your nearest distributor at: www.choretime.com/contacts**

CTB, Inc.
PO Box 2000
Milford, Indiana 46542-2000 USA
Phone (574) 658-4101 Fax (877) 730-8825
Email: choretime@choretime.com
Internet: www.choretime.com